

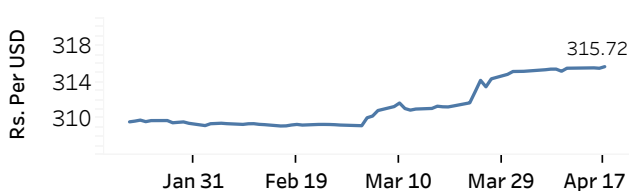


Real GDP Growth: 2025 5.0%    NCPI Y-o-Y Change: February 2026 1.6%    CCPI Y-o-Y Change: March 2026 2.2%

### Exchange Rates

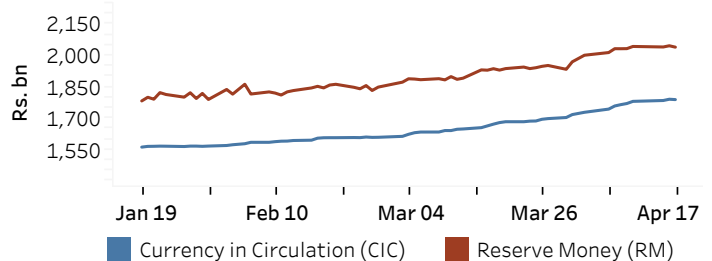
17-Apr-26	TT Buying <sup>(a)</sup>	TT Selling <sup>(a)</sup>
	(Rs. Per Unit)	(Rs. Per Unit)
USD	312.2287	319.7445
GBP	420.6801	433.5596
EUR	366.3298	377.9689
JPY	1.9510	2.0164

### Indicative Rate of the USD/LKR Spot Exchange Rate



### Currency and Reserve Money

	(Rs.mn)	16-Apr-26	17-Apr-26
Currency in Circulation		1,790,730.72	1,788,997.79
Reserve Money		2,046,761.60	2,040,084.63



Source: Central Bank of Sri Lanka

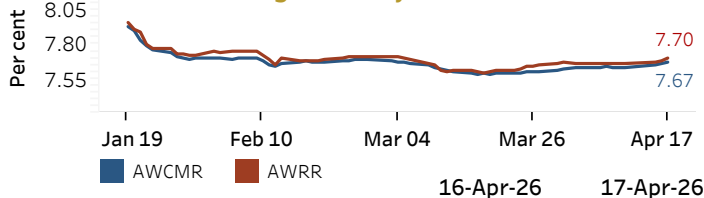
### Money Market

Policy Rate (OPR): 7.75%

SRR: 2.00%

Weekly AWPR: 9.79%

### Overnight Money Market



Overnight Liquidity (Rs. bn)	16-Apr-26	17-Apr-26
	107.38	106.32

Source: Central Bank of Sri Lanka

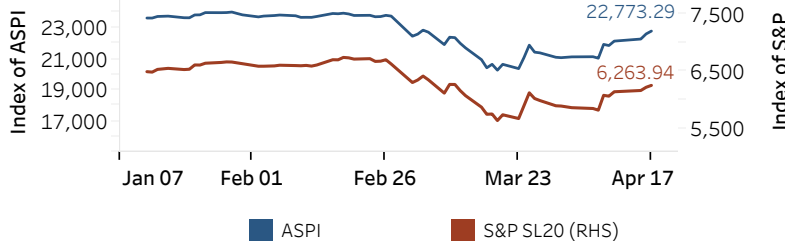
### Yield Rates of T-Bills

	(per cent)	
	Primary Market 15-Apr-26	Secondary Market 17-Apr-26 <sup>(b)</sup>
91 Day	8.15	-
182 Day	8.22	-
364 Day	8.52	-

Source: Ministry of Finance, Planning and Economic Development

### Share Market

#### ASPI and S&P SL 20



#### 17-Apr-26

Daily Turnover (Rs. mn)	4,974.72
Market Capitalization (Rs. bn)	8,211.17
PE Ratio	11.62

#### Foreign Purchases and Sales

	(Rs. mn)
Foreign Purchases	195.38
Foreign Sales	391.87

Source: Colombo Stock Exchange

### Energy

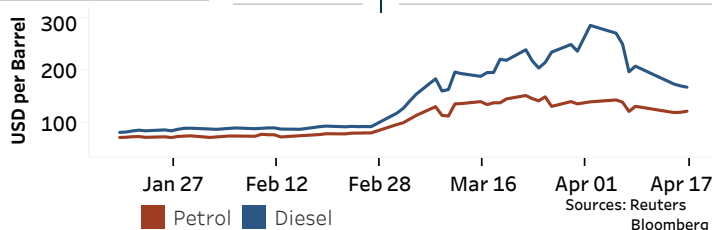
CPC Local Prices (LKR per Litre): Petrol (92 octane): 398.00

Auto Diesel: 382.00

Kerosene: 255.00

#### Global Petroleum Products

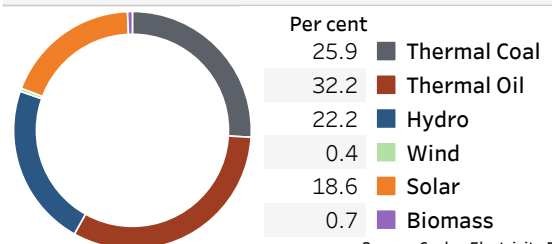
Crude Oil (USD per Barrel)			Refined (Singapore Platts)		
20-Apr-26 <sup>(c)</sup>	16-Apr-26		17-Apr-26		
Brent	WTI	OPEC	Petrol	Diesel	Kerosene
94.68	88.38	104.79	121.30	167.70	204.13



Sources: Reuters  
Bloomberg

#### Electricity Generation

	16-Apr-26	17-Apr-26
Total Energy (GWh)	44.23	47.40
Peak Demand (MW)	2,420.60	2,637.40



Source: Ceylon Electricity Board

(a) The average buying and selling exchange rates are calculated based on the quotes provided at 9.30 AM on daily basis for Telegraphic Transfers (TT) for designated foreign currencies by the selected Licensed Banks

(b) Based on actual transactions above Rs. 50 mn reported up to 4.00 PM (c) Updated at 8.00 AM