

# Daily Price Report

A Summary of Price Developments - 2 April 2020

Wholesale prices of vegetables declined in Pettah market compared to yesterday, due to low trading activities owing to prevailing situation in the country.

|  |   |   | Price (Rs./kg)         |                 |                  |
|--|---|---|------------------------|-----------------|------------------|
|  |   |   | Yesterday              | Today           |                  |
| <b>Vegetables</b><br> | <ul style="list-style-type: none"> <li>Wholesale prices of <b>Beans</b> and <b>Tomato</b> declined in <b>Dambulla</b> market compared to yesterday due to <b>low trading activities</b> owing to prevailing situation in the country.</li> </ul>    | ▼ | Beans :                | 75.00           | 53.00            |
|  |   |   | Tomato :               | 33.00           | 23.00            |
| <b>Other</b><br>      | <ul style="list-style-type: none"> <li>Wholesale price of <b>Local Red Onion</b> increased in <b>Dambulla</b> market compared to yesterday due to <b>low supply</b> from <b>Jaffna</b> area.</li> </ul>   | ▲ | Dambulla :             | 200.00          | 220.00           |
|  | <ul style="list-style-type: none"> <li>Wholesale price of <b>Green Chillies</b> increased in both <b>Pettah</b> and <b>Dambulla</b> markets compared to yesterday due to <b>low supply</b> from <b>Jaffna</b> and <b>Puttalam</b> areas.</li> </ul> | ▲ | Pettah :<br>Dambulla : | 110.00<br>95.00 | 120.00<br>140.00 |



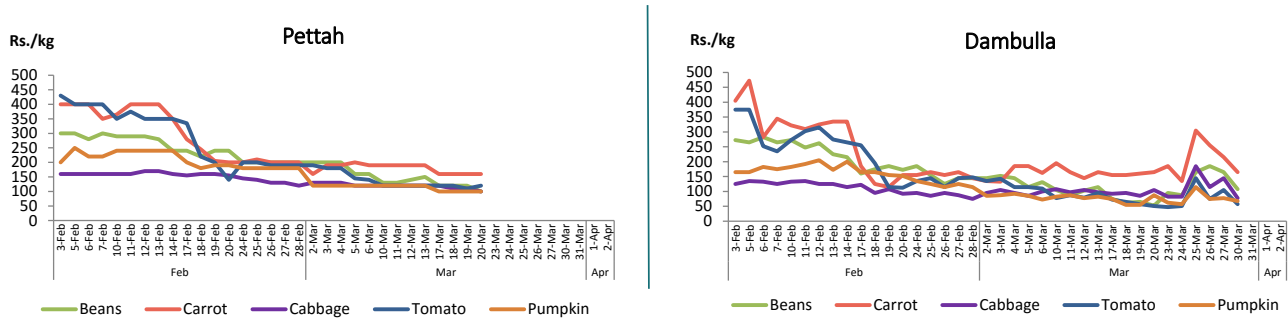
Statistics Department  
Central Bank of Sri Lanka

Vegetables

| Item        | Wholesale Prices |        |           |        | Retail Prices |       |           |       |
|-------------|------------------|--------|-----------|--------|---------------|-------|-----------|-------|
|             | Pettah           |        | Dambulla  |        | Pettah        |       | Dambulla  |       |
|             | Yesterday        | Today  | Yesterday | Today  | Yesterday     | Today | Yesterday | Today |
|             | Rs./kg           |        | Rs./kg    |        | Rs./kg        |       | Rs./kg    |       |
| Beans       | 90.00            | 80.00  | 75.00     | 53.00  | n.a.          | n.a.  | 95.00     | n.a.  |
| Carrot      | 150.00           | 130.00 | 145.00    | 145.00 | n.a.          | n.a.  | 165.00    | n.a.  |
| Cabbage     | 100.00           | 80.00  | 65.00     | 68.00  | n.a.          | n.a.  | 85.00     | n.a.  |
| Tomato      | 70.00            | 60.00  | 33.00     | 23.00  | n.a.          | n.a.  | 53.00     | n.a.  |
| Brinjal     | 100.00           | 80.00  | 43.00     | 55.00  | n.a.          | n.a.  | 63.00     | n.a.  |
| Pumpkin     | 65.00            | 60.00  | 43.00     | 50.00  | n.a.          | n.a.  | 63.00     | n.a.  |
| Snake gourd | 65.00            | 60.00  | 28.00     | 30.00  | n.a.          | n.a.  | 48.00     | n.a.  |

- Price increased by more than 5% compared yesterday's price.
- Price decreased by more than 5% compared yesterday's price.

Daily Retail Prices



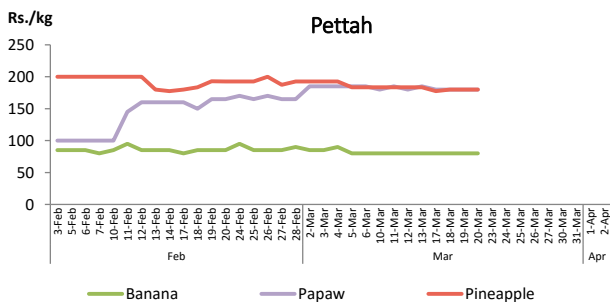
Note: Retail trade activities were not carried out in Dambulla market today and in Pettah market since last Friday.

Fruits

| Item          | Wholesale Prices |       | Retail Prices |       |
|---------------|------------------|-------|---------------|-------|
|               | Pettah           |       | Pettah        |       |
|               | Yesterday        | Today | Yesterday     | Today |
|               | Rs./kg           |       | Rs./kg        |       |
| Banana (Sour) | 50.00            | 50.00 | n.a.          | n.a.  |
| Papaw         | n.a.             | 80.00 | n.a.          | n.a.  |
| Pineapple     | n.a.             | n.a.  | n.a.          | n.a.  |
|               |                  |       | Rs./Each      |       |
| Apple (Imp)   |                  |       | n.a.          | n.a.  |
| Orange (Imp)  |                  |       | n.a.          | n.a.  |

- Price increased by more than 5% compared yesterday's price.
- Price decreased by more than 5% compared yesterday's price.

Daily Retail Prices



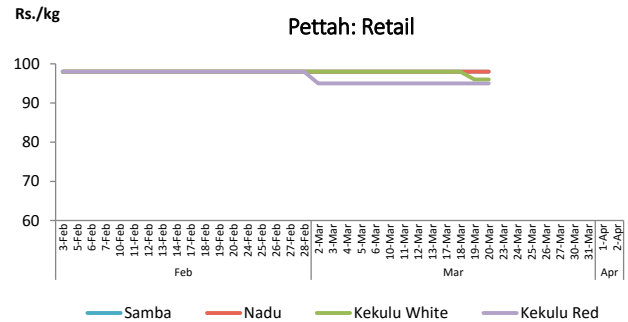
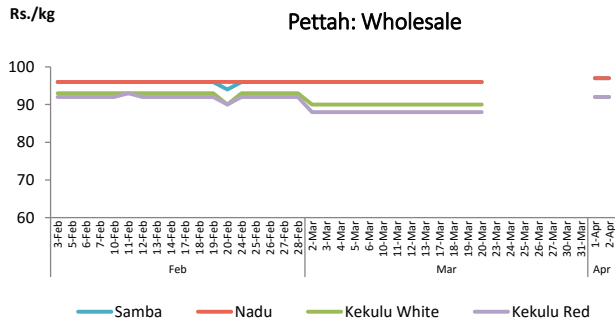
Note: Retail trade activities were not carried out in Pettah market since last Friday.

Rice

| Item         | Wholesale Prices |       |           |       | Retail Prices |       |           |       |
|--------------|------------------|-------|-----------|-------|---------------|-------|-----------|-------|
|              | Marandagamula    |       | Pettah    |       | Dambulla      |       | Pettah    |       |
|              | Yesterday        | Today | Yesterday | Today | Yesterday     | Today | Yesterday | Today |
|              | Rs./kg           |       | Rs./kg    |       | Rs./kg        |       | Rs./kg    |       |
| Samba        | 95.00            | 95.00 | 97.00     | 97.00 | n.a.          | n.a.  | n.a.      | n.a.  |
| Nadu         | 92.00            | 92.00 | 97.00     | 97.00 | n.a.          | n.a.  | n.a.      | n.a.  |
| Kekulu White | 86.00            | 86.00 | 92.00     | 92.00 | n.a.          | n.a.  | n.a.      | n.a.  |
| Kekulu Red   | 89.00            | 89.00 | 92.00     | 92.00 | n.a.          | n.a.  | n.a.      | n.a.  |

- Price increased by more than 5% compared yesterday's price.
- Price decreased by more than 5% compared yesterday's price.

Daily Wholesale and Retail Prices



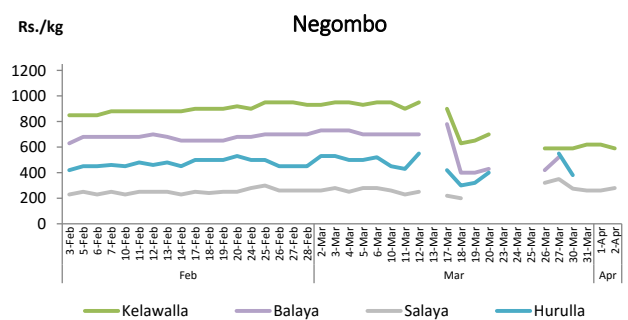
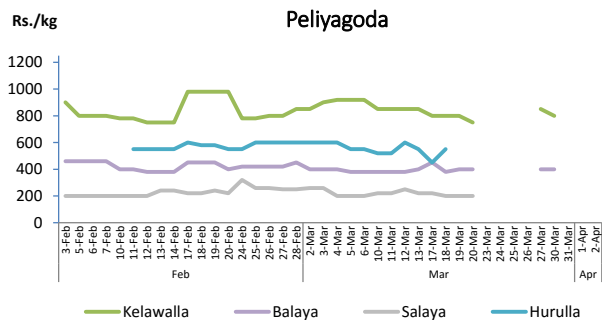
Note:  
 In Pettah market, retail trade activities were not carried out since last Friday.  
 Retail prices of rice varieties were not available for Dambulla market since last Friday.

Fish

| Item      | Wholesale Prices |        |           |        | Retail Prices |       |           |        |
|-----------|------------------|--------|-----------|--------|---------------|-------|-----------|--------|
|           | Peliyagoda       |        | Negombo   |        | Peliyagoda    |       | Negombo   |        |
|           | Yesterday        | Today  | Yesterday | Today  | Yesterday     | Today | Yesterday | Today  |
|           | Rs./kg           |        | Rs./kg    |        | Rs./kg        |       | Rs./kg    |        |
| Kelawalla | 450.00           | 500.00 | 350.00    | 340.00 | n.a.          | n.a.  | 620.00    | 590.00 |
| Thalapath | n.a.             | 600.00 | n.a.      | 700.00 | n.a.          | n.a.  | n.a.      | 880.00 |
| Balaya    | 300.00           | n.a.   | n.a.      | n.a.   | n.a.          | n.a.  | n.a.      | n.a.   |
| Paraw     | 500.00           | 500.00 | n.a.      | 600.00 | n.a.          | n.a.  | n.a.      | 720.00 |
| Salaya    | 250.00           | 250.00 | 195.00    | 210.00 | n.a.          | n.a.  | 260.00    | 280.00 |
| Hurulla   | 400.00           | n.a.   | n.a.      | n.a.   | n.a.          | n.a.  | n.a.      | n.a.   |

- Price increased by more than 5% compared yesterday's price.
- Price decreased by more than 5% compared yesterday's price.

Daily Retail Prices



Note:  
 Retail trade activities were not carried out in Peliyagoda fish market since last Tuesday.  
 Prices of Negombo fish market were obtained from the outlet of Ceylon Fisheries Corporation in Negombo.

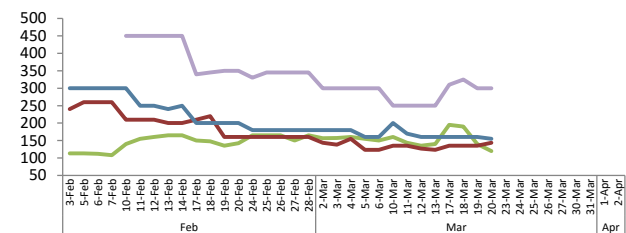
Other

| Item                  | Wholesale Prices |        |           |        | Retail Prices |       |           |       |
|-----------------------|------------------|--------|-----------|--------|---------------|-------|-----------|-------|
|                       | Pettah           |        | Dambulla  |        | Pettah        |       | Dambulla  |       |
|                       | Yesterday        | Today  | Yesterday | Today  | Yesterday     | Today | Yesterday | Today |
|                       | Rs./kg           |        | Rs./kg    |        | Rs./kg        |       | Rs./kg    |       |
| Red-Onion (local)     | 300.00           | 300.00 | 200.00    | 220.00 | n.a.          | n.a.  | 210.00    | n.a.  |
| Red-Onion (Imp)       | n.a.             | n.a.   | 228.00    | 230.00 | n.a.          | n.a.  | 238.00    | n.a.  |
| Big-Onion (local)     | n.a.             | n.a.   | n.a.      | n.a.   | n.a.          | n.a.  | n.a.      | n.a.  |
| Big-Onion (Imp)       | 133.00           | 140.00 | 128.00    | 120.00 | n.a.          | n.a.  | 138.00    | n.a.  |
| Potato (local)        | 150.00           | 150.00 | 148.00    | 130.00 | n.a.          | n.a.  | 158.00    | n.a.  |
| Potato (Imp)          | 140.00           | 140.00 |           |        | n.a.          | n.a.  |           |       |
| Dried Chilli (Imp)    | 400.00           | 400.00 | 388.00    | n.a.   | n.a.          | n.a.  | 398.00    | n.a.  |
| Coconut (Rs./Nut)     | n.a.             | 75.00  | 64.00     | 65.00  | n.a.          | n.a.  | 69.00     | n.a.  |
| Coconut oil (Rs./Ltr) | 420.00           | 420.00 |           |        | n.a.          | n.a.  |           |       |
| Dhal (whole)          | n.a.             | 145.00 |           |        | n.a.          | n.a.  |           |       |
| Sugar                 | 101.00           | 101.00 |           |        | n.a.          | n.a.  |           |       |
| Egg (Rs./Each)        | n.a.             | n.a.   |           |        | n.a.          | n.a.  |           |       |
| Katta                 | 880.00           | 880.00 |           |        | n.a.          | n.a.  |           |       |
| Sprat                 | 550.00           | 550.00 |           |        | n.a.          | n.a.  |           |       |
| Green Chilli          | 110.00           | 120.00 | 95.00     | 140.00 | n.a.          | n.a.  | 115.00    | n.a.  |
| Lime                  | 150.00           | 150.00 | 145.00    | 130.00 | n.a.          | n.a.  | 155.00    | n.a.  |

■ Price increased by more than 5% compared yesterday's price.  
■ Price decreased by more than 5% compared yesterday's price.

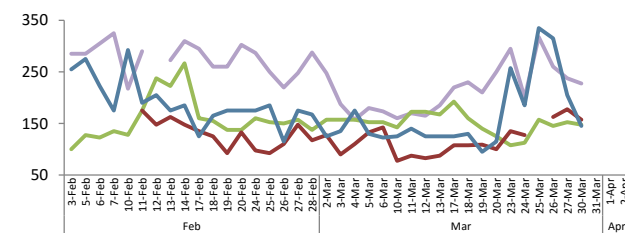
Daily Retail Prices

Pettah



— Red-Onion (Local) 
 — Big-Onion (Imported) 
 — Potato (Local) 
 — Green Chilli

Dambulla



— Red-Onion (Local) 
 — Big-Onion (Imported) 
 — Potato (Local) 
 — Green Chilli

Note:

Retail trade activities were not carried out in Dambulla market today and in Pettah market since last Friday.