

# Daily Price Report

A Summary of Price<sup>1</sup> Developments - 07 June 2019

## Vegetables



Retail price of **Carrot** increased in both **Pettah** and **Dambulla** markets due to availability of **high** quality varieties from **Nuwara Eliya** area.



Price of **Tomato** significantly **decreased** in **Dambulla** market due to **high** supply from **Matale** and **Sigiriya** areas.



## Fish



Prices of **most** fish varieties **increased** in **Peliyagoda** market due to **off** season in **Northern** and **Eastern** coastal areas.



## Other



Price of **Coconut** decreased in both **Pettah** and **Dambulla** markets due to **favourable** supply from **Kurunegala**, **Malsiripura** and **Galewela** areas.



Price of **Green Chillies** increased in **Pettah** market due to availability of **high** quality varieties from **Jaffna** area.



<sup>1</sup> Price developments are analysed compared to average prices of the previous week.

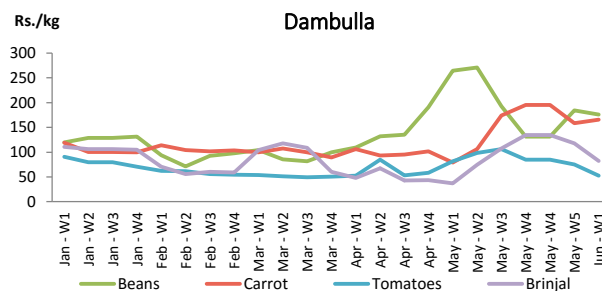
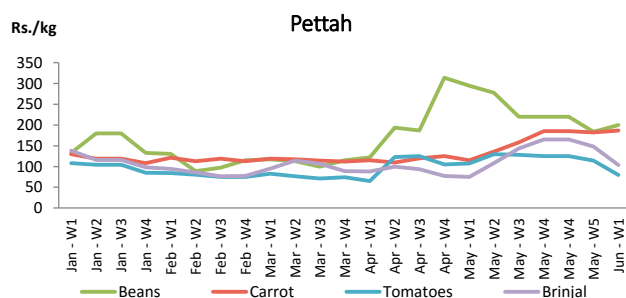


Vegetables

Item	Wholesale Prices				Retail Prices			
	Pettah		Dambulla		Pettah		Dambulla	
	Previous Week	Today	Previous Week	Today	Previous Week	Today	Previous Week	Today
	Rs./kg		Rs./kg		Rs./kg		Rs./kg	
Beans	144.00	140.00	164.00	155.00	182.00	180.00	185.00	175.00
Carrot	148.00	140.00	139.00	155.00	180.00	190.00	159.00	175.00
Cabbage	65.00	60.00	61.00	58.00	102.00	90.00	81.00	78.00
Tomatoes	67.00	40.00	55.00	18.00	108.00	80.00	75.00	38.00
Brinjal	98.00	50.00	98.00	53.00	136.00	90.00	118.00	73.00
Pumpkin	77.00	80.00	66.00	81.00	104.00	120.00	86.00	101.00
Snake gourd	96.00	80.00	85.00	55.00	136.00	120.00	105.00	75.00

■ Price increased by more than 5% compared to previous week average price.  
■ Price decreased by more than 5% compared to previous week average price.

Average Weekly Retail Prices

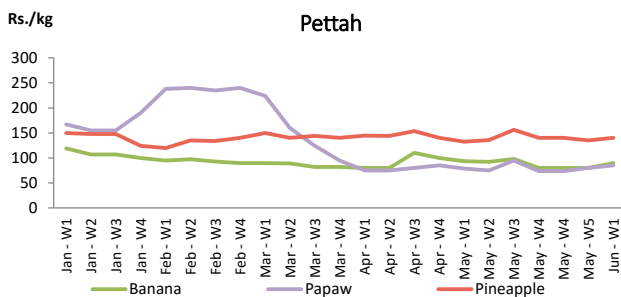


Fruits

Item	Wholesale Prices		Retail Prices	
	Pettah		Pettah	
	Previous Week	Today	Previous Week	Today
	Rs./kg		Rs./kg	
Banana (Sour)	50.00	50.00	80.00	95.00
Papaw	51.00	55.00	80.00	85.00
Pineapple	100.00	100.00	135.00	140.00
			Rs./Each	
Apple (Imp)			39.00	43.00
Orange (Imp)			45.00	46.00

■ Price increased by more than 5% compared to previous week average price.  
■ Price decreased by more than 5% compared to previous week average price.

Average Weekly Retail Prices

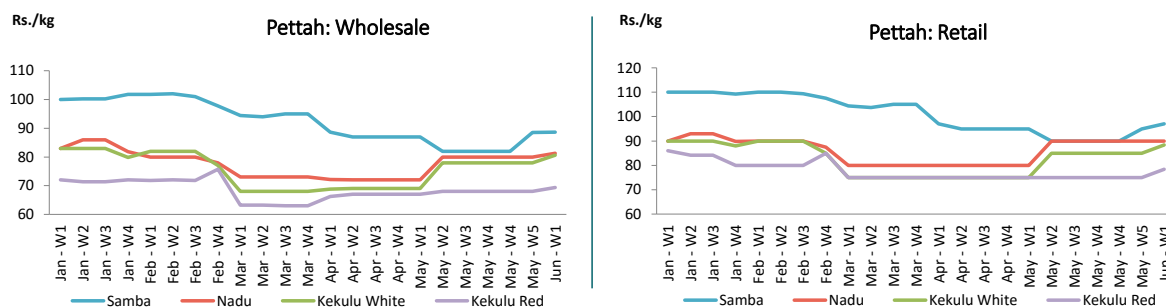


Rice

Item	Wholesale Prices				Retail Prices			
	Marandagamula		Pettah		Dambulla		Pettah	
	Previous Week	Today	Previous Week	Today	Previous Week	Today	Previous Week	Today
	Rs./kg		Rs./kg		Rs./kg		Rs./kg	
Samba	83.00	81.00	89.00	89.00	91.00	92.00	95.00	98.00
Nadu	83.00	84.00	80.00	82.00	85.00	84.00	90.00	90.00
Kekulu White	76.00	77.00	78.00	<b>82.00</b>	80.00	80.00	85.00	<b>90.00</b>
Kekulu Red	67.00	67.00	68.00	70.00	79.00	76.00	75.00	<b>80.00</b>

■ Price increased by more than 5% compared to previous week average price.  
■ Price decreased by more than 5% compared to previous week average price.

Average Weekly Wholesale and Retail Prices

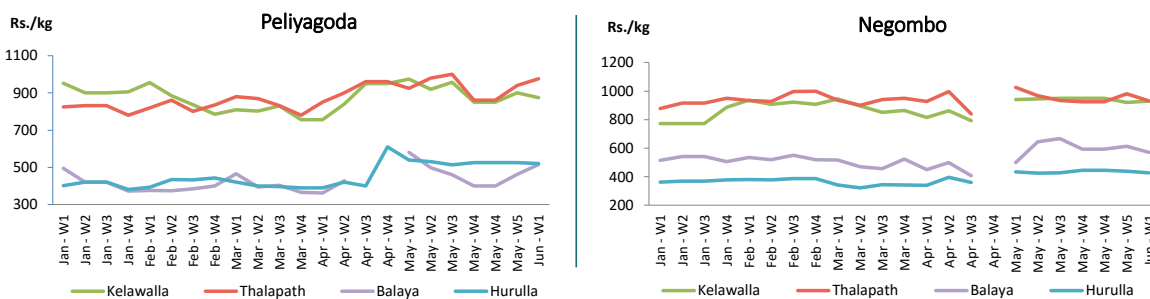


Fish

Item	Wholesale Prices				Retail Prices			
	Peliyagoda		Negombo		Peliyagoda		Negombo	
	Previous Week	Today	Previous Week	Today	Previous Week	Today	Previous Week	Today
	Rs./kg		Rs./kg		Rs./kg		Rs./kg	
Kelawalla	600.00	<b>550.00</b>	644.00	<b>680.00</b>	900.00	<b>850.00</b>	920.00	950.00
Thalapath	740.00	<b>800.00</b>	704.00	720.00	940.00	980.00	982.00	950.00
Balaya	363.00	<b>400.00</b>	382.00	<b>360.00</b>	463.00	<b>500.00</b>	614.00	<b>550.00</b>
Paraw	615.00	<b>680.00</b>	588.00	600.00	913.00	<b>980.00</b>	940.00	930.00
Salaya	186.00	<b>200.00</b>	168.00	<b>180.00</b>	224.00	<b>240.00</b>	250.00	<b>280.00</b>
Hurulla	425.00	<b>450.00</b>	338.00	330.00	525.00	550.00	438.00	430.00

■ Price increased by more than 5% compared to previous week average price.  
■ Price decreased by more than 5% compared to previous week average price.

Average Weekly Retail Prices



Other

Item	Wholesale Prices				Retail Prices			
	Pettah		Dambulla		Pettah		Dambulla	
	Previous Week	Today	Previous Week	Today	Previous Week	Today	Previous Week	Today
	Rs./kg		Rs./kg		Rs./kg		Rs./kg	
Red-Onions (local)	160.00	150.00	133.00	130.00	200.00	180.00	142.00	140.00
Red-Onions (Imp)	160.00	150.00	158.00	128.00	200.00	180.00	168.00	138.00
Big-Onions (local)	n.a.	n.a.	n.a.	n.a.	n.a.	n.a.	n.a.	n.a.
Big-Onions (Imp)	82.00	85.00	77.00	78.00	100.00	100.00	89.00	88.00
Potatoes (local)	158.00	150.00	151.00	138.00	196.00	180.00	161.00	148.00
Potatoes (Imp)	95.00	90.00			120.00	110.00		
Dried Chillies (Imp)	270.00	270.00	266.00	278.00	320.00	320.00	277.00	288.00
Coconut (Rs./Nut)	35.00	30.00	32.00	29.00	43.00	38.00	37.00	34.00
Coconut oil (Rs./Ltr)	340.00	320.00			360.00	340.00		
Dhal	108.00	110.00			120.00	120.00		
Sugar	94.00	98.00			100.00	105.00		
Eggs (Rs./Each)	14.50	14.50			15.50	15.50		
Katta	880.00	880.00			950.00	950.00		
Sprats	500.00	500.00			550.00	550.00		
Green Chillies	184.00	220.00	n.a.	205.00	240.00	260.00	n.a.	225.00
Lime	355.00	350.00	n.a.	315.00	415.00	450.00	n.a.	335.00

■ Price increased by more than 5% compared to previous week average price.  
■ Price decreased by more than 5% compared to previous week average price.

Average Weekly Retail Prices

