

Daily Price Report

A Summary of Price Developments - 20 April 2018



Vegetables

- Prices of most varieties of **vegetables decreased** in both **Pettah** and **Dambulla** markets due to **high level of supply being received from Northern Province**.



Fish

- Prices of most varieties of **fish decreased** in both **Negombo** and **Peliyagoda** markets due to **favourable supply coupled with contracted demand following festive season**.



Fruits

- **Prices of Papaw decreased** in **Pettah** market due to **favourable supply conditions from Chilaw area**.



Other

- Price of **Red Onion (imported) decreased** in both **Pettah** and **Dambulla** markets due to **high level of supply of several onion varieties**.



Wholesale and Retail Prices of Selected Food Commodities - 2018/04/20

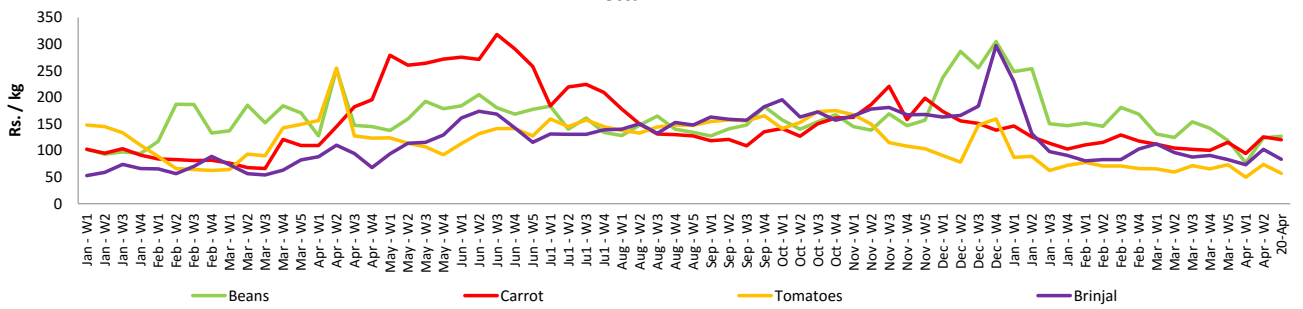
Vegetables

Item	Unit	Wholesale				Retail			
		Pettah		Dambulla		Pettah		Dambulla	
		Previous 5 Days Average	Today	Previous 5 Days Average	Today	Previous 5 Days Average	Today	Previous 5 Days Average	Today
Beans	Rs./Kg	111.00	90.00	66.00	38.00	149.00	127.00	88.00	58.00
Carrot	Rs./Kg	97.00	87.00	98.00	78.00	133.00	120.00	119.00	98.00
Cabbage	Rs./Kg	46.00	53.00	29.00	31.00	76.00	83.00	50.00	51.00
Tomatoes	Rs./Kg	34.00	27.00	21.00	10.00	63.00	57.00	42.00	30.00
Brinjal	Rs./Kg	63.00	53.00	38.00	15.00	98.00	83.00	59.00	35.00
Pumpkin	Rs./Kg	30.00	28.00	15.00	19.00	53.00	47.00	36.00	39.00
Snake gourd	Rs./Kg	71.00	60.00	36.00	13.00	105.00	90.00	57.00	33.00

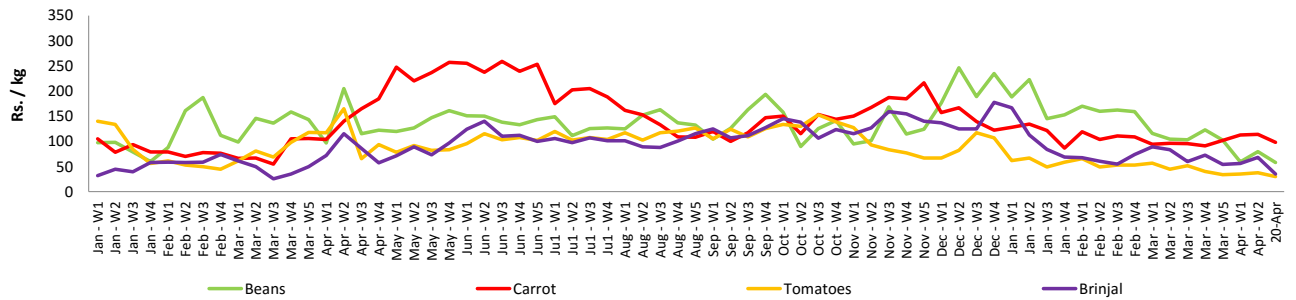
- Price increased by more than 5% compared to previous week average price.
- Price decreased by more than 5% compared to previous week average price.

Retail Prices

Pettah



Dambulla



Wholesale and Retail Prices of Selected Food Commodities - 2018/04/20

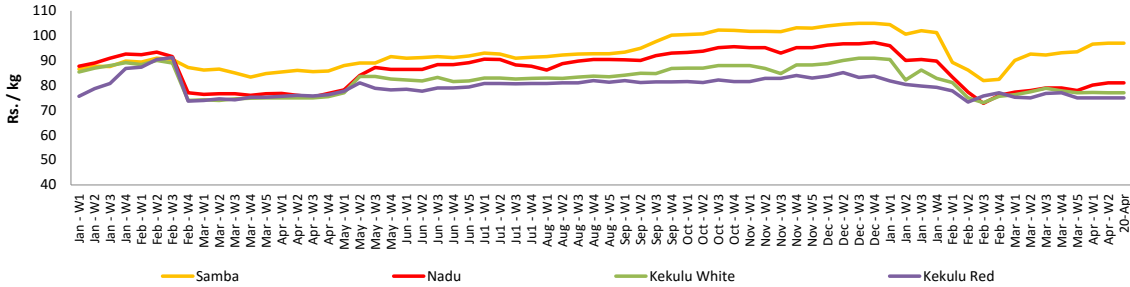
Rice

Item	Unit	Wholesale				Retail	
		Maradaghamula		Pettah		Pettah	
		Previous 5 Days Average	Today	Previous 5 Days Average	Today	Previous 5 Days Average	Today
Samba	Rs./Kg	97.00	97.00	103.00	102.00	109.00	108.00
Nadu	Rs./Kg	81.00	81.00	78.00	77.00	86.00	85.00
Kekulu White	Rs./Kg	76.00	77.00	76.00	76.00	83.00	83.00
Kekulu Red	Rs./Kg	75.00	75.00	75.00	75.00	80.00	80.00

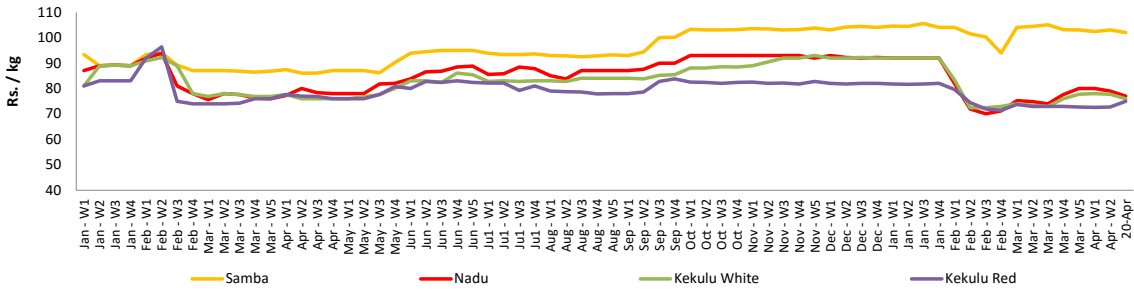
- Price increased by more than 5% compared to previous week average price.
- Price decreased by more than 5% compared to previous week average price.

Wholesale Prices

Marandaghamula

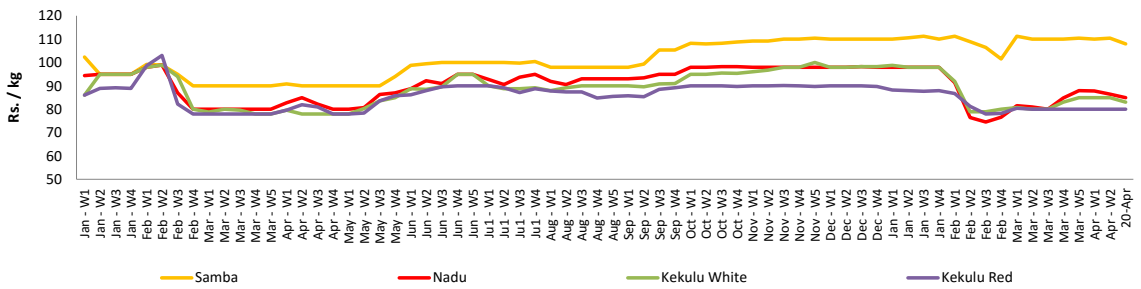


Pettah



Retail Prices

Pettah



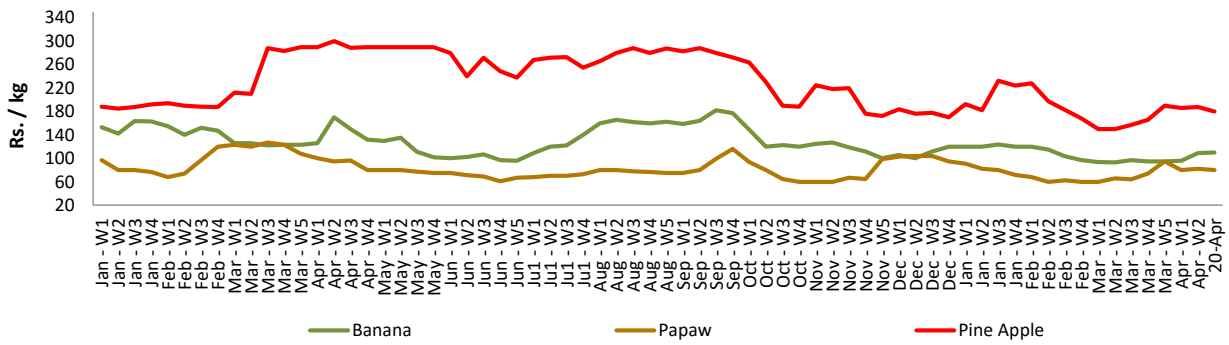
Wholesale and Retail Prices of Selected Food Commodities - 2018/04/20

Fruits

Item	Unit	Wholesale		Retail	
		Pettah			
		Previous 5 Days Average	Today	Previous 5 Days Average	Today
Banana (Sour)	Rs./Kg	86.00	80.00	118.00	110.00
Papaw	Rs./Kg	70.00	60.00	99.00	80.00
Pineapple	Rs./Kg	142.00	140.00	180.00	180.00

- Price increased by more than 5% compared to previous week average price.
- Price decreased by more than 5% compared to previous week average price.

Retail - Pettah



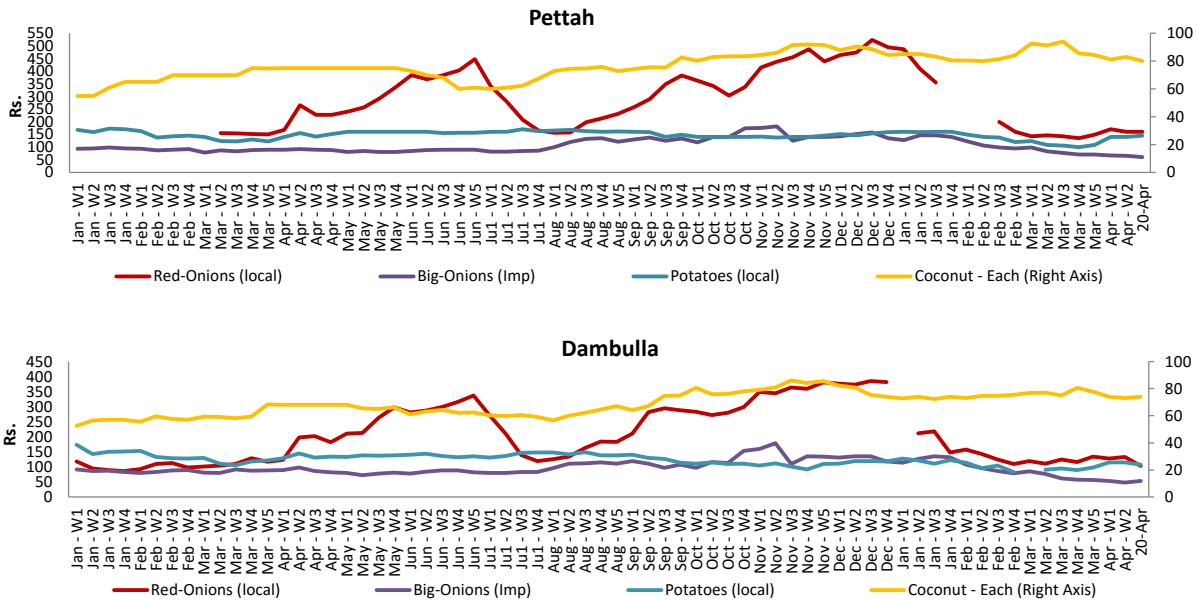
Wholesale and Retail Prices of Selected Food Commodities - 2018/04/20

Other

Item	Unit	Wholesale				Retail			
		Pettah		Dambulla		Pettah		Dambulla	
		Previous 5 Days Average	Today	Previous 5 Days Average	Today	Previous 5 Days Average	Today	Previous 5 Days Average	Today
Red-Onions (local)	Rs./Kg	125.00	125.00	120.00	93.00	160.00	160.00	132.00	103.00
Red-Onions (Imp)	Rs./Kg	125.00	120.00	106.00	79.00	157.00	140.00	121.00	89.00
Big-Onions (local)	Rs./Kg	n.a.	n.a.	n.a.	n.a.	n.a.	n.a.	n.a.	n.a.
Big-Onions (Imp)	Rs./Kg	42.00	40.00	42.00	43.00	60.00	60.00	52.00	53.00
Potatoes (local)	Rs./Kg	112.00	120.00	100.00	98.00	143.00	145.00	111.00	108.00
Potatoes (Imp)	Rs./Kg	72.00	70.00			91.00	90.00		
Dried Chillies (Imp)	Rs./Kg	259.00	260.00	250.00	255.00	299.00	300.00	263.00	268.00
Coconut	Rs./Nut	69.00	69.00	68.00	69.00	81.00	80.00	74.00	74.00
Coconut oil	Rs./Ltr	360.00	360.00			398.00	400.00		
Dhal	Rs./Kg	105.00	105.00			120.00	120.00		
Sugar	Rs./Kg	98.00	98.00			110.00	110.00		
Eggs	Rs./Each	11.00	11.00			12.00	12.00		
Katta	Rs./Kg	800.00	800.00			850.00	850.00		
Sprats	Rs./Kg	540.00	550.00			606.00	620.00		

- Price increased by more than 5% compared to previous week average price.
- Price decreased by more than 5% compared to previous week average price.

Retail Prices



* Prices of food commodities may vary due to quality and markets among other factors.