

# Daily Price Report

---

A Summary of Price Developments - 02 March 2018

---



## Vegetables

- Prices of most varieties of **vegetables continued the decreasing trend** in both **Pettah** and **Dambulla** markets reportedly due to **favourable supply**.



## Rice

- Price of **most varieties of rice increased** in both **Pettah** and **Marandaghamula** markets.



## Fish

- Prices of most varieties of **fish demonstrated stability in Peliyagoda market** while prices of few varieties in **Negombo market** indicated **marginal increase**.



Statistics Department  
Central Bank of Sri Lanka

# Wholesale and Retail Prices of Selected Food Commodities - 2018/03/02

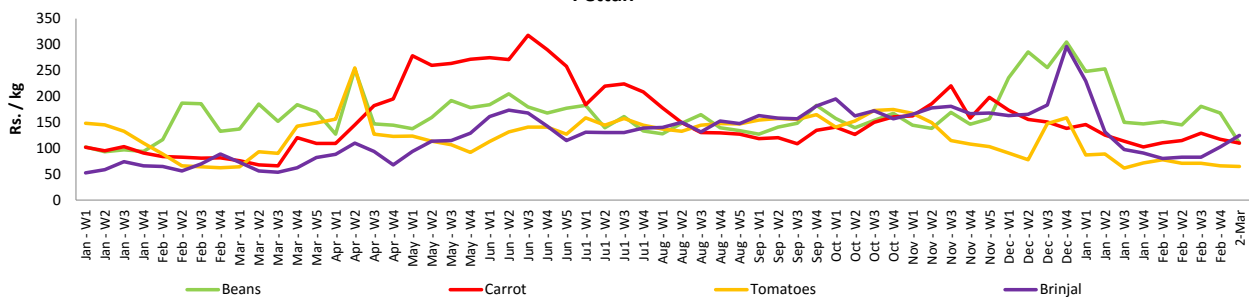
## Vegetables

| Item        | Unit   | Wholesale               |       |                         |       | Retail                  |        |                         |       |
|-------------|--------|-------------------------|-------|-------------------------|-------|-------------------------|--------|-------------------------|-------|
|             |        | Pettah                  |       | Dambulla                |       | Pettah                  |        | Dambulla                |       |
|             |        | Previous 5 Days Average | Today | Previous 5 Days Average | 1-Mar | Previous 5 Days Average | Today  | Previous 5 Days Average | 1-Mar |
| Beans       | Rs./Kg | 115.00                  | 68.00 | 122.00                  | 65.00 | 152.00                  | 110.00 | 142.00                  | 85.00 |
| Carrot      | Rs./Kg | 78.00                   | 68.00 | 74.00                   | 73.00 | 117.00                  | 110.00 | 95.00                   | 93.00 |
| Cabbage     | Rs./Kg | 36.00                   | 28.00 | 29.00                   | 33.00 | 70.00                   | 64.00  | 49.00                   | 53.00 |
| Tomatoes    | Rs./Kg | 37.00                   | 30.00 | 36.00                   | 33.00 | 68.00                   | 65.00  | 56.00                   | 53.00 |
| Brinjal     | Rs./Kg | 73.00                   | 83.00 | 64.00                   | 63.00 | 109.00                  | 125.00 | 84.00                   | 83.00 |
| Pumpkin     | Rs./Kg | 58.00                   | 60.00 | 53.00                   | 48.00 | 83.00                   | 83.00  | 73.00                   | 68.00 |
| Snake gourd | Rs./Kg | 55.00                   | 50.00 | 46.00                   | 43.00 | 87.00                   | 88.00  | 66.00                   | 63.00 |

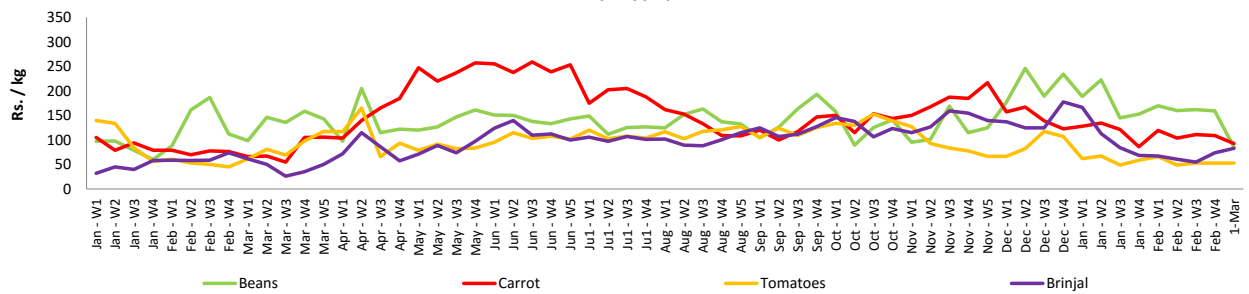
- Price increased by more than 5% compared to previous week average price.
- Price decreased by more than 5% compared to previous week average price.

### Retail Prices

#### Pettah



#### Dambulla



# Wholesale and Retail Prices of Selected Food Commodities - 2018/03/02

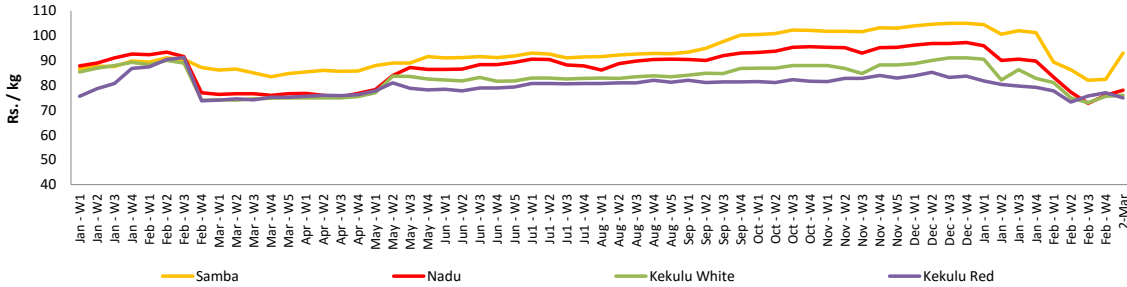
## Rice

| Item         | Unit   | Wholesale               |       |                         |        | Retail                  |        |
|--------------|--------|-------------------------|-------|-------------------------|--------|-------------------------|--------|
|              |        | Maradaghamula           |       | Pettah                  |        | Pettah                  |        |
|              |        | Previous 5 Days Average | Today | Previous 5 Days Average | Today  | Previous 5 Days Average | Today  |
| Samba        | Rs./Kg | 87.00                   | 93.00 | 101.00                  | 106.00 | 108.00                  | 113.00 |
| Nadu         | Rs./Kg | 77.00                   | 78.00 | 74.00                   | 77.00  | 80.00                   | 83.00  |
| Kekulu White | Rs./Kg | 76.00                   | 76.00 | 73.00                   | 75.00  | 80.00                   | 82.00  |
| Kekulu Red   | Rs./Kg | 76.00                   | 75.00 | 72.00                   | 78.00  | 79.00                   | 84.00  |

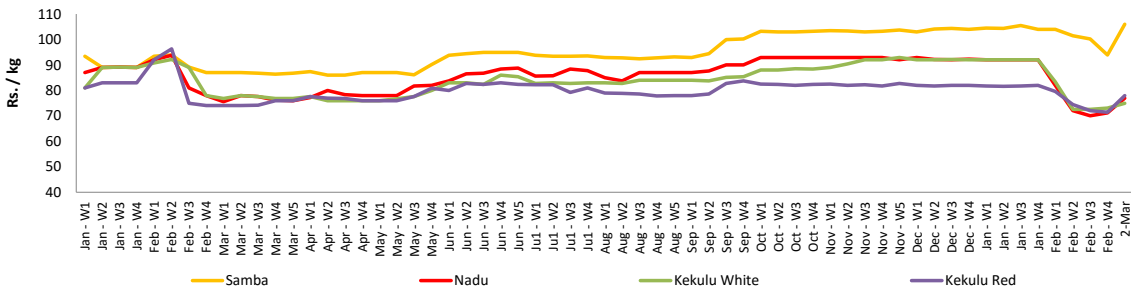
- Price increased by more than 5% compared to previous week average price.
- Price decreased by more than 5% compared to previous week average price.

### Wholesale Prices

#### Maradaghamula

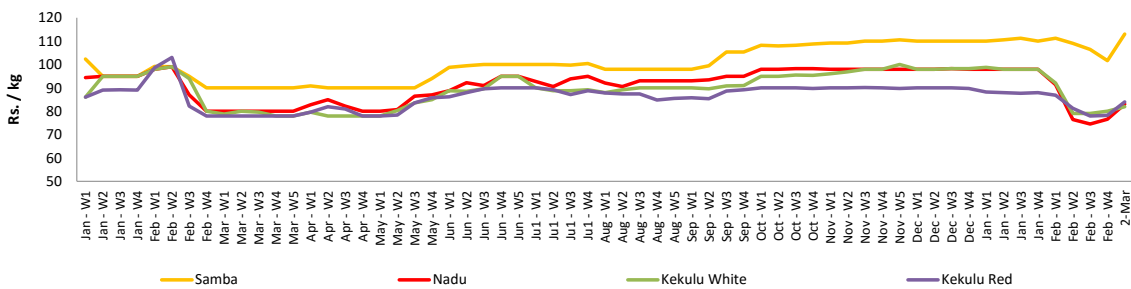


#### Pettah



### Retail Prices

#### Pettah



# Wholesale and Retail Prices of Selected Food Commodities - 2018/03/02

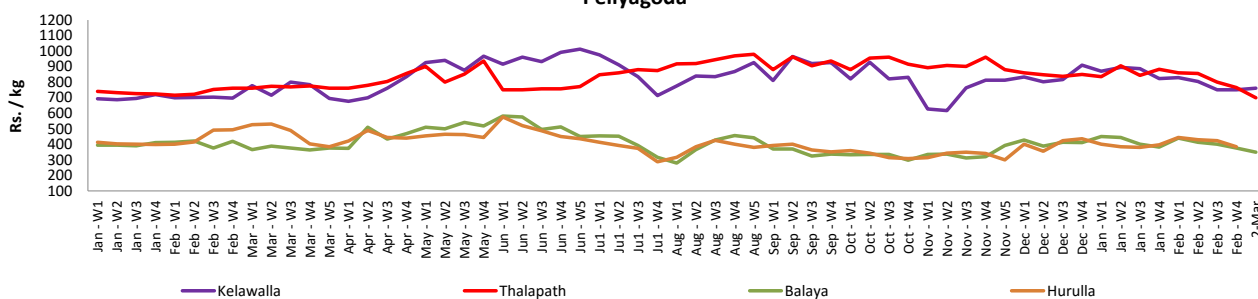
## Fish

| Item      | Unit   | Wholesale               |        |                         |        | Retail                  |        |                         |        |
|-----------|--------|-------------------------|--------|-------------------------|--------|-------------------------|--------|-------------------------|--------|
|           |        | Peliyagoda              |        | Negombo                 |        | Peliyagoda              |        | Negombo                 |        |
|           |        | Previous 5 Days Average | Today  | Previous 5 Days Average | Today  | Previous 5 Days Average | Today  | Previous 5 Days Average | Today  |
| Kelawalla | Rs./Kg | 452.00                  | 430.00 | 510.00                  | 500.00 | 782.00                  | 760.00 | 742.00                  | 750.00 |
| Thalapath | Rs./Kg | 576.00                  | 560.00 | 696.00                  | 740.00 | 720.00                  | 700.00 | 920.00                  | 920.00 |
| Balaya    | Rs./Kg | 246.00                  | 250.00 | 242.00                  | 260.00 | 348.00                  | 350.00 | 396.00                  | 400.00 |
| Paraw     | Rs./Kg | 466.00                  | n.a.   | 532.00                  | 540.00 | 820.00                  | n.a.   | 812.00                  | 800.00 |
| Salaya    | Rs./Kg | 108.00                  | 120.00 | 126.00                  | 120.00 | 154.00                  | 160.00 | 198.00                  | 200.00 |
| Hurulla   | Rs./Kg | 302.00                  | n.a.   | 272.00                  | 340.00 | 404.00                  | n.a.   | 372.00                  | 440.00 |

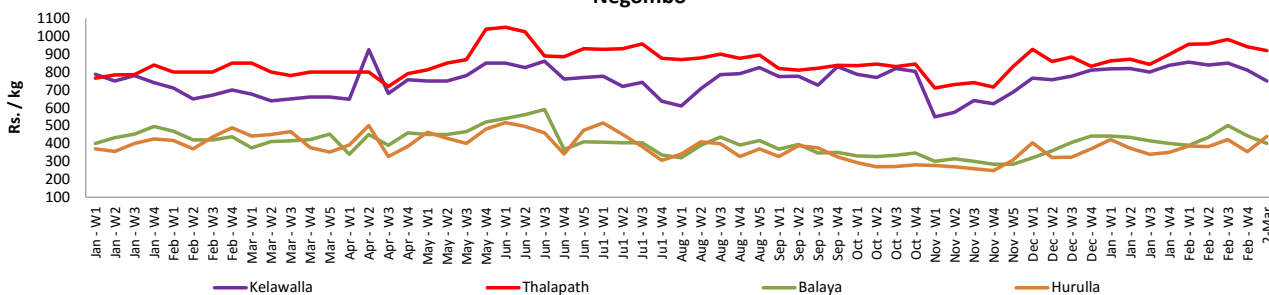
- Price increased by more than 5% compared to previous week average price.
- Price decreased by more than 5% compared to previous week average price.

### Retail Prices

#### Peliyagoda



#### Negombo



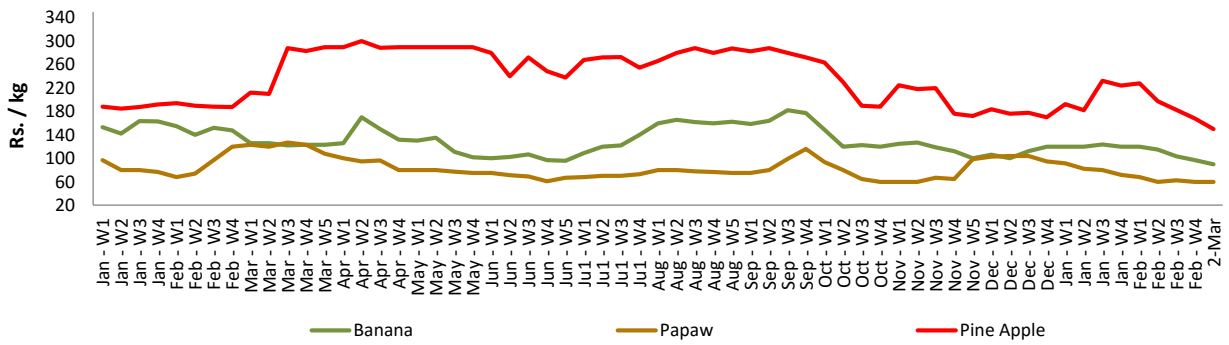
# Wholesale and Retail Prices of Selected Food Commodities - 2018/03/02

## Fruits

| Item          | Unit   | Wholesale               |        | Retail                  |        |
|---------------|--------|-------------------------|--------|-------------------------|--------|
|               |        | Pettah                  |        |                         |        |
|               |        | Previous 5 Days Average | Today  | Previous 5 Days Average | Today  |
| Banana (Sour) | Rs./Kg | 60.00                   | 60.00  | 95.00                   | 90.00  |
| Papaw         | Rs./Kg | 40.00                   | 40.00  | 60.00                   | 60.00  |
| Pineapple     | Rs./Kg | 120.00                  | 120.00 | 150.00                  | 150.00 |

- Price increased by more than 5% compared to previous week average price.
- Price decreased by more than 5% compared to previous week average price.

Retail - Pettah



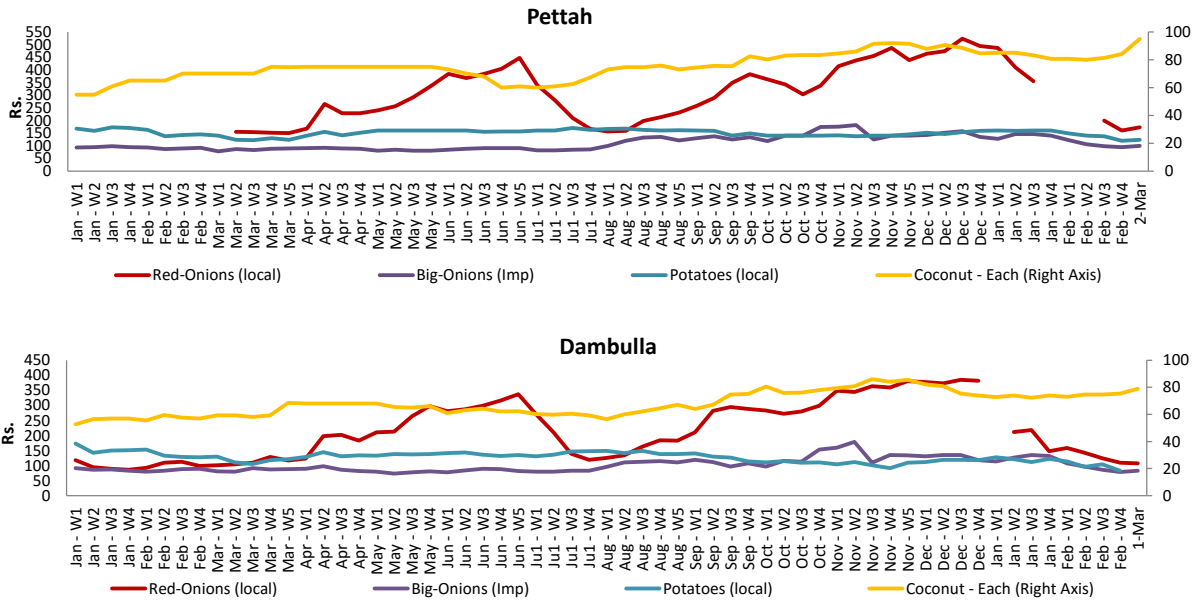
# Wholesale and Retail Prices of Selected Food Commodities - 2018/03/02

## Other

| Item                 | Unit     | Wholesale               |        |                         |        | Retail                  |        |                         |        |
|----------------------|----------|-------------------------|--------|-------------------------|--------|-------------------------|--------|-------------------------|--------|
|                      |          | Pettah                  |        | Dambulla                |        | Pettah                  |        | Dambulla                |        |
|                      |          | Previous 5 Days Average | Today  | Previous 5 Days Average | 1-Mar  | Previous 5 Days Average | Today  | Previous 5 Days Average | 1-Mar  |
| Red-Onions (local)   | Rs./Kg   | 108.00                  | 105.00 | 105.00                  | 98.00  | 139.00                  | 173.00 | 118.00                  | 108.00 |
| Red-Onions (Imp)     | Rs./Kg   | 120.00                  | 120.00 | 116.00                  | 115.00 | 158.00                  | 150.00 | 128.00                  | 125.00 |
| Big-Onions (local)   | Rs./Kg   | n.a.                    | n.a.   | n.a.                    | n.a.   | n.a.                    | n.a.   | n.a.                    | n.a.   |
| Big-Onions (Imp)     | Rs./Kg   | 77.00                   | 85.00  | 72.00                   | 73.00  | 96.00                   | 100.00 | 84.00                   | 83.00  |
| Potatoes (local)     | Rs./Kg   | 89.00                   | 90.00  | 73.00                   | n.a.   | 122.00                  | 123.00 | 93.00                   | n.a.   |
| Potatoes (Imp)       | Rs./Kg   | 62.00                   | 73.00  |                         |        | 78.00                   | 90.00  |                         |        |
| Dried Chillies (Imp) | Rs./Kg   | 221.00                  | 225.00 | 223.00                  | 223.00 | 269.00                  | 270.00 | 233.00                  | 233.00 |
| Coconut              | Rs./Nut  | 83.00                   | 81.00  | 70.00                   | 73.00  | 91.00                   | 95.00  | 76.00                   | 79.00  |
| Coconut oil          | Rs./Ltr  | 360.00                  | 360.00 |                         |        | 380.00                  | 380.00 |                         |        |
| Dhal                 | Rs./Kg   | 110.00                  | 110.00 |                         |        | 125.00                  | 123.00 |                         |        |
| Sugar                | Rs./Kg   | 100.00                  | 100.00 |                         |        | 110.00                  | 110.00 |                         |        |
| Eggs                 | Rs./Each | 13.00                   | 13.00  |                         |        | 14.00                   | 14.00  |                         |        |
| Katta                | Rs./Kg   | 820.00                  | 820.00 |                         |        | 850.00                  | 850.00 |                         |        |
| Sprats               | Rs./Kg   | 500.00                  | 500.00 |                         |        | 550.00                  | 550.00 |                         |        |

- Price increased by more than 5% compared to previous week average price.
- Price decreased by more than 5% compared to previous week average price.

### Retail Prices



\* Prices of food commodities may vary due to quality and markets among other factors.