

## A Summary of Price Developments (From 04 October 2017 to 12 October 2017)



### Vegetables

- Prices of most varieties of vegetables decreased in both Pettah and Dambulla markets due to favourable supply.



### Rice

- No significant price movement was observed of rice compared with the previous week in both Pettah and Marandagahamula markets.



### Fruits

- Prices of most fruit varieties continued to decrease in Pettah market due to favourable supply.



### Other

- Prices of Big Onions (Local and Imported) increased in both Pettah and Dambulla markets compared with the previous week.

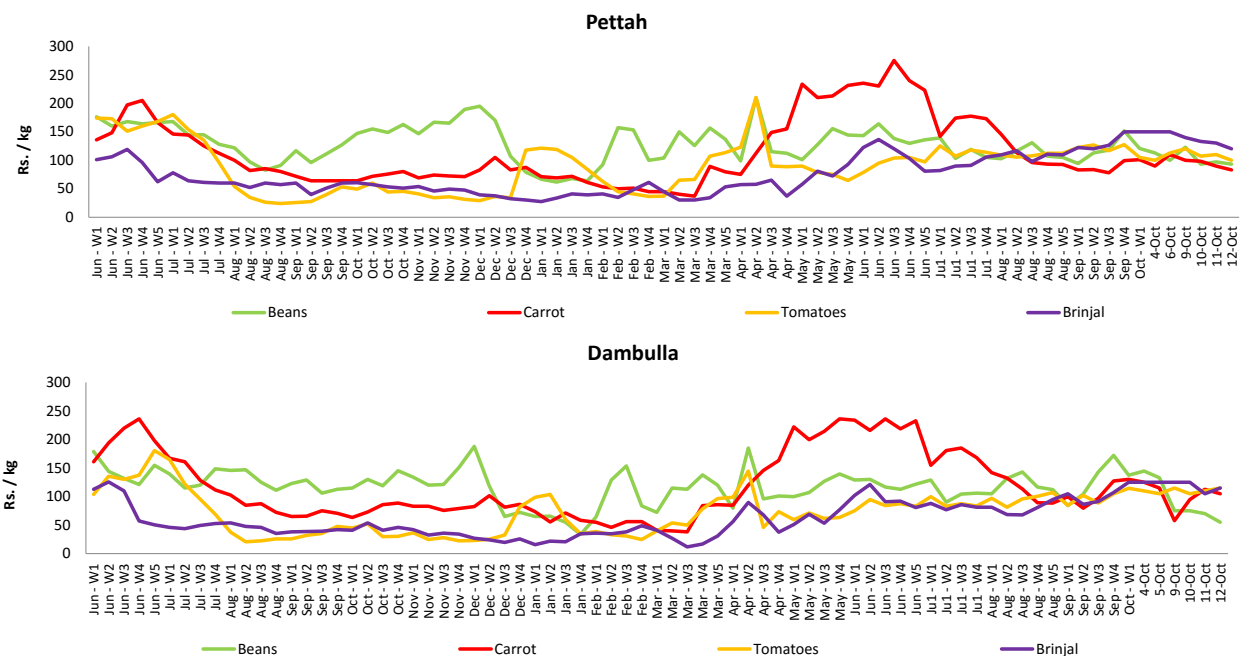
# Wholesale and Retail Prices of Selected Food Commodities - 2017/10/12

## Vegetables

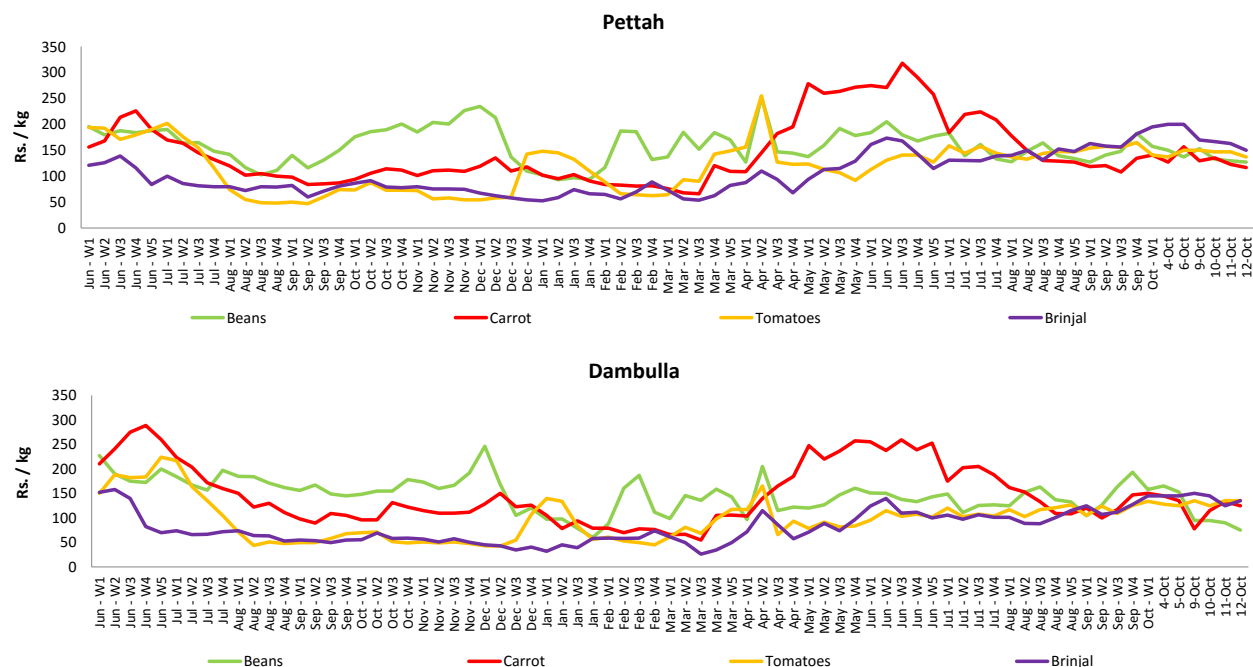
| Item        | Unit   | Wholesale               |        |                         |        | Retail                  |        |                         |        |
|-------------|--------|-------------------------|--------|-------------------------|--------|-------------------------|--------|-------------------------|--------|
|             |        | Pettah                  |        | Dambulla                |        | Pettah                  |        | Dambulla                |        |
|             |        | Previous 5 Days Average | Today  | Previous 5 Days Average | Today  | Previous 5 Days Average | Today  | Previous 5 Days Average | Today  |
| Beans       | Rs./Kg | 105.00                  | 93.00  | 100.00                  | 55.00  | 141.00                  | 127.00 | 120.00                  | 75.00  |
| Carrot      | Rs./Kg | 98.00                   | 83.00  | 101.00                  | 105.00 | 134.00                  | 117.00 | 121.00                  | 125.00 |
| Cabbage     | Rs./Kg | 108.00                  | 107.00 | 80.00                   | 75.00  | 148.00                  | 143.00 | 100.00                  | 95.00  |
| Tomatoes    | Rs./Kg | 110.00                  | 100.00 | 109.00                  | 115.00 | 146.00                  | 137.00 | 130.00                  | 135.00 |
| Brinjal     | Rs./Kg | 141.00                  | 120.00 | 121.00                  | 115.00 | 180.00                  | 150.00 | 142.00                  | 135.00 |
| Pumpkin     | Rs./Kg | 39.00                   | 40.00  | 36.00                   | 33.00  | 66.00                   | 70.00  | 55.00                   | 53.00  |
| Snake gourd | Rs./Kg | 91.00                   | 87.00  | 72.00                   | 58.00  | 127.00                  | 120.00 | 91.00                   | 78.00  |

- Price increased by more than 5% compared to previous week average price.
- Price decreased by more than 5% compared to previous week average price.

### Wholesale Prices



### Retail Prices



# Wholesale and Retail Prices of Selected Food Commodities - 2017/10/12

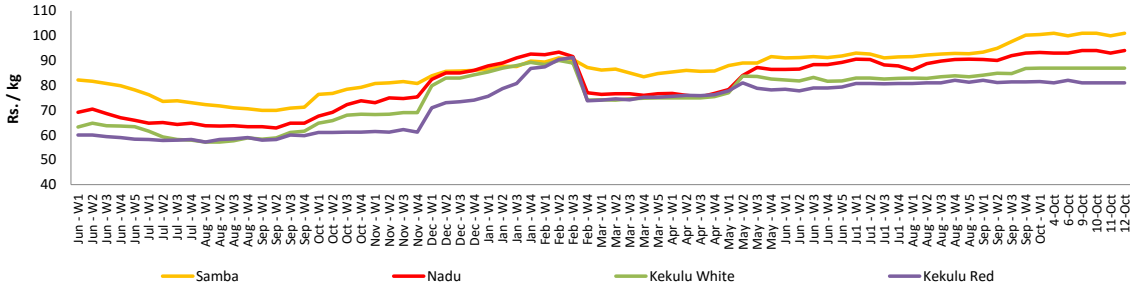
## Rice

| Item         | Unit   | Wholesale               |        |                         |        | Retail                  |        |
|--------------|--------|-------------------------|--------|-------------------------|--------|-------------------------|--------|
|              |        | Maradaghamula           |        | Pettah                  |        | Pettah                  |        |
|              |        | Previous 5 Days Average | Today  | Previous 5 Days Average | Today  | Previous 5 Days Average | Today  |
| Samba        | Rs./Kg | 101.00                  | 101.00 | 103.00                  | 103.00 | 108.00                  | 108.00 |
| Nadu         | Rs./Kg | 93.00                   | 94.00  | 93.00                   | 93.00  | 98.00                   | 98.00  |
| Kekulu White | Rs./Kg | 87.00                   | 87.00  | 88.00                   | 88.00  | 95.00                   | 95.00  |
| Kekulu Red   | Rs./Kg | 81.00                   | 81.00  | 82.00                   | 82.00  | 90.00                   | 90.00  |

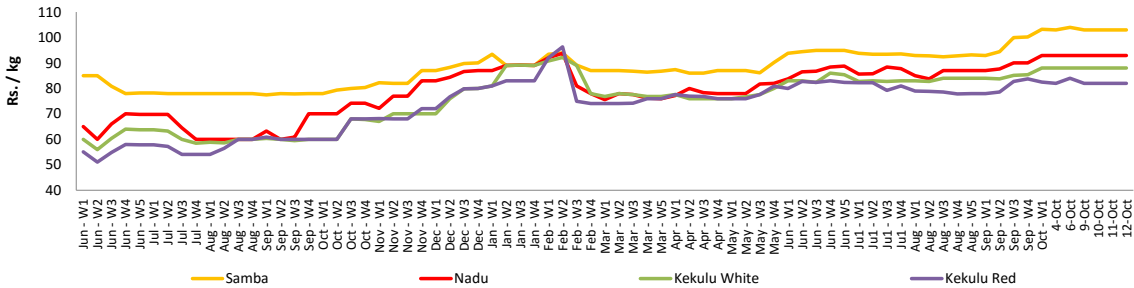
- Price increased by more than 5% compared to previous week average price.
- Price decreased by more than 5% compared to previous week average price.

### Wholesale Prices

#### Maradaghamula

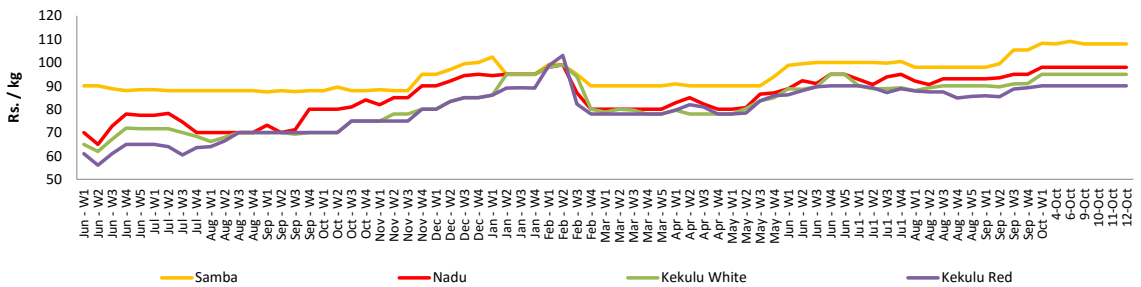


#### Pettah



### Retail Prices

#### Pettah



# Wholesale and Retail Prices of Selected Food Commodities - 2017/10/12

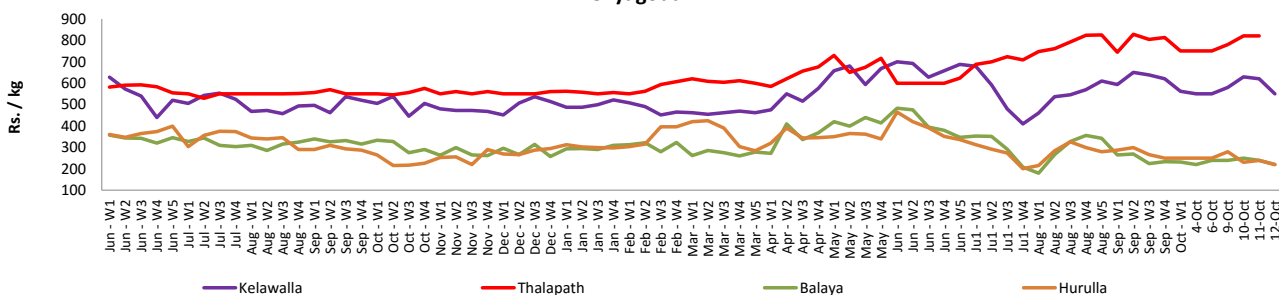
## Fish

| Item      | Unit   | Wholesale               |        |                         |        | Retail                  |        |                         |        |
|-----------|--------|-------------------------|--------|-------------------------|--------|-------------------------|--------|-------------------------|--------|
|           |        | Peliyagoda              |        | Negombo                 |        | Peliyagoda              |        | Negombo                 |        |
|           |        | Previous 5 Days Average | Today  | Previous 5 Days Average | Today  | Previous 5 Days Average | Today  | Previous 5 Days Average | Today  |
| Kelawalla | Rs./Kg | 586.00                  | 550.00 | 558.00                  | 540.00 | 896.00                  | 880.00 | 762.00                  | 750.00 |
| Thalapath | Rs./Kg | 784.00                  | n.a.   | 602.00                  | 600.00 | 920.00                  | n.a.   | 840.00                  | 850.00 |
| Balaya    | Rs./Kg | 238.00                  | 220.00 | 174.00                  | 180.00 | 338.00                  | 320.00 | 308.00                  | 350.00 |
| Paraw     | Rs./Kg | 523.00                  | n.a.   | 542.00                  | 550.00 | 850.00                  | n.a.   | 768.00                  | 780.00 |
| Salaya    | Rs./Kg | 136.00                  | 100.00 | 100.00                  | 100.00 | 200.00                  | 160.00 | 170.00                  | 180.00 |
| Hurulla   | Rs./Kg | 250.00                  | 220.00 | 196.00                  | 200.00 | 356.00                  | 320.00 | 274.00                  | 280.00 |

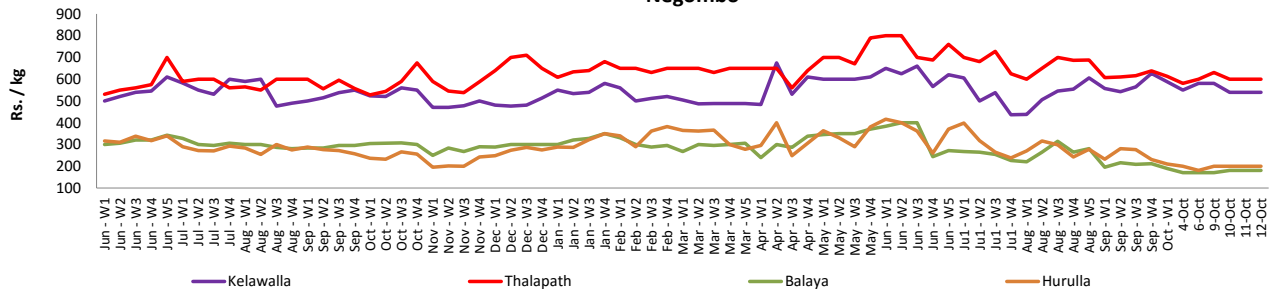
- Price increased by more than 5% compared to previous week average price.
- Price decreased by more than 5% compared to previous week average price.

### Wholesale Prices

#### Peliyagoda

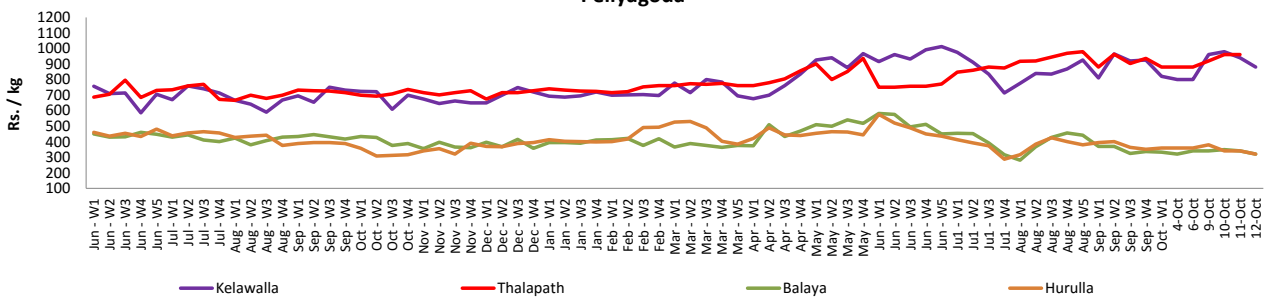


#### Negombo

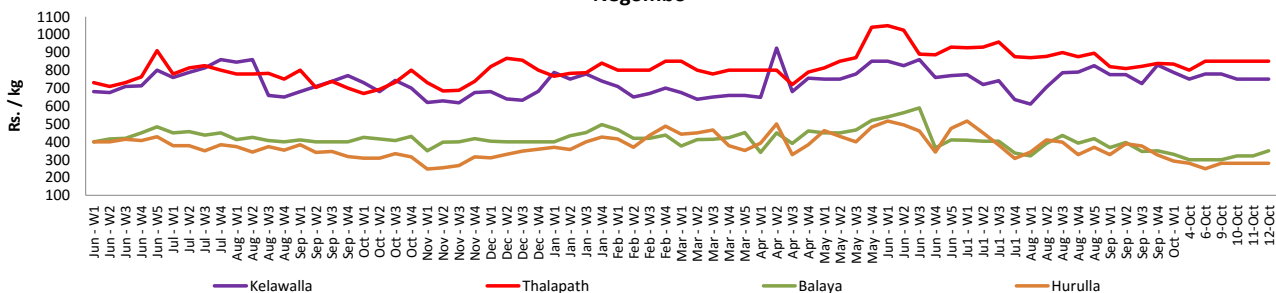


### Retail Prices

#### Peliyagoda



#### Negombo



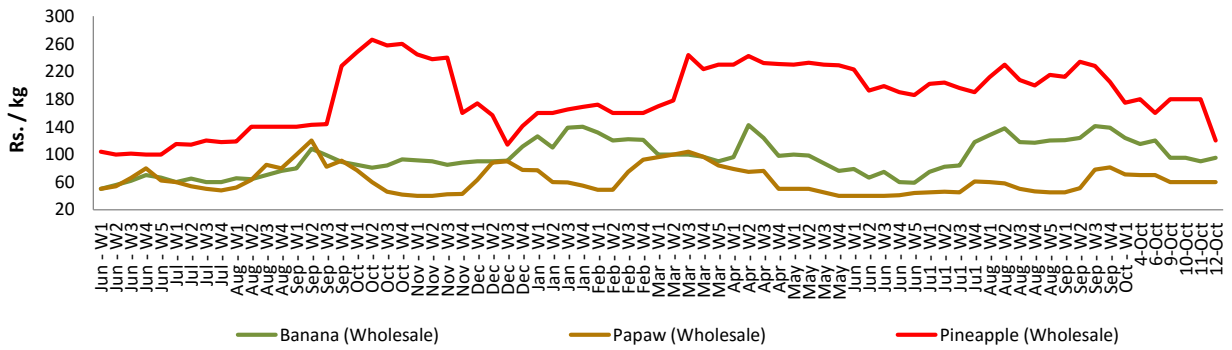
# Wholesale and Retail Prices of Selected Food Commodities - 2017/10/12

## Fruits

| Item          | Unit   | Wholesale               |        | Retail                  |        |
|---------------|--------|-------------------------|--------|-------------------------|--------|
|               |        | Pettah                  |        |                         |        |
|               |        | Previous 5 Days Average | Today  | Previous 5 Days Average | Today  |
| Banana (Sour) | Rs./Kg | 103.00                  | 95.00  | 127.00                  | 120.00 |
| Papaw         | Rs./Kg | 64.00                   | 60.00  | 84.00                   | 80.00  |
| Pineapple     | Rs./Kg | 176.00                  | 120.00 | 254.00                  | 200.00 |

- Price increased by more than 5% compared to previous week average price.
- Price decreased by more than 5% compared to previous week average price.

Wholesale - Pettah



# Wholesale and Retail Prices of Selected Food Commodities - 2017/10/12

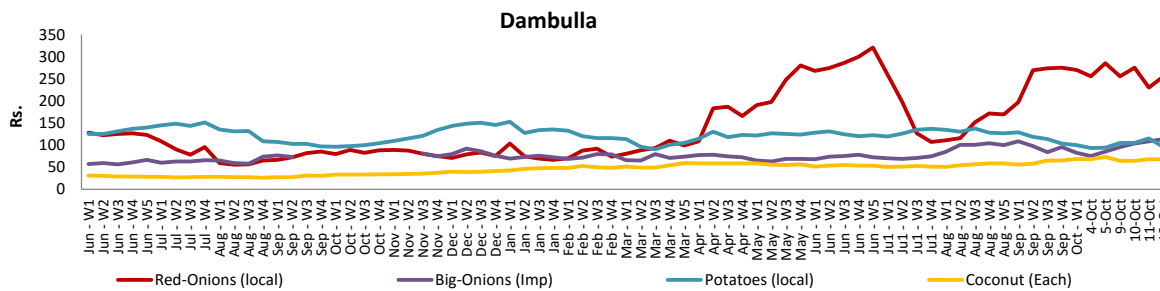
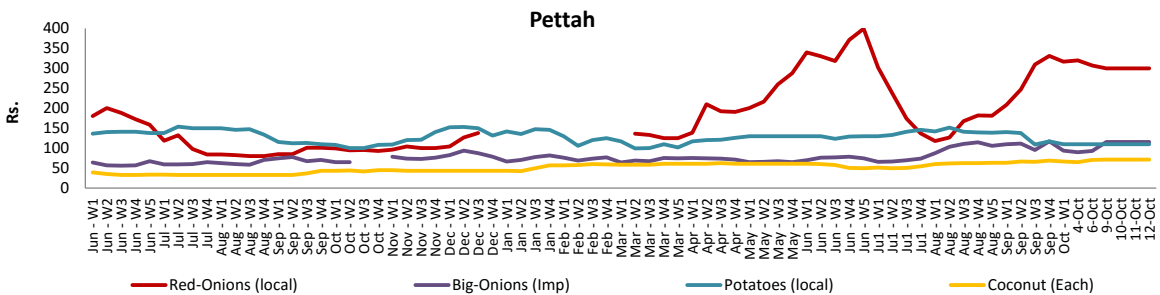
## Other

| Item                 | Unit     | Wholesale               |        |                         |        | Retail                  |        |                         |        |
|----------------------|----------|-------------------------|--------|-------------------------|--------|-------------------------|--------|-------------------------|--------|
|                      |          | Pettah                  |        | Dambulla                |        | Pettah                  |        | Dambulla                |        |
|                      |          | Previous 5 Days Average | Today  | Previous 5 Days Average | Today  | Previous 5 Days Average | Today  | Previous 5 Days Average | Today  |
| Red-Onions (local)   | Rs./Kg   | 305.00                  | 300.00 | 260.00                  | 255.00 | 350.00                  | 340.00 | 275.00                  | 268.00 |
| Red-Onions (Imp)     | Rs./Kg   | 263.00                  | 260.00 | 108.00                  | n.a.   | 287.00                  | 280.00 | 125.00                  | n.a.   |
| Big-Onions (local)   | Rs./Kg   | 90.00                   | 120.00 | 82.00                   | 95.00  | 118.00                  | 140.00 | 96.00                   | 108.00 |
| Big-Onions (Imp)     | Rs./Kg   | 106.00                  | 115.00 | 93.00                   | 113.00 | 132.00                  | 140.00 | 105.00                  | 123.00 |
| Potatoes (local)     | Rs./Kg   | 110.00                  | 110.00 | 102.00                  | 95.00  | 140.00                  | 140.00 | 114.00                  | 108.00 |
| Potatoes (Imp)       | Rs./Kg   | 88.00                   | 85.00  |                         |        | 109.00                  | 105.00 |                         |        |
| Dried Chillies (Imp) | Rs./Kg   | 210.00                  | 210.00 | 194.00                  | 195.00 | 249.00                  | 250.00 | 207.00                  | 208.00 |
| Coconut              | Rs./Nut  | 70.00                   | 71.00  | 67.00                   | 68.00  | 82.00                   | 83.00  | 77.00                   | 78.00  |
| Coconut oil          | Rs./Ltr  | 352.00                  | 360.00 |                         |        | 372.00                  | 380.00 |                         |        |
| Dhal                 | Rs./Kg   | 133.00                  | 133.00 |                         |        | 150.00                  | 150.00 |                         |        |
| Sugar                | Rs./Kg   | 103.00                  | 103.00 |                         |        | 110.00                  | 110.00 |                         |        |
| Eggs                 | Rs./Each | 9.00                    | 9.00   |                         |        | 10.20                   | 10.00  |                         |        |
| Katta                | Rs./Kg   | 900.00                  | 900.00 |                         |        | 950.00                  | 950.00 |                         |        |
| Sprats               | Rs./Kg   | 500.00                  | 500.00 |                         |        | 550.00                  | 550.00 |                         |        |

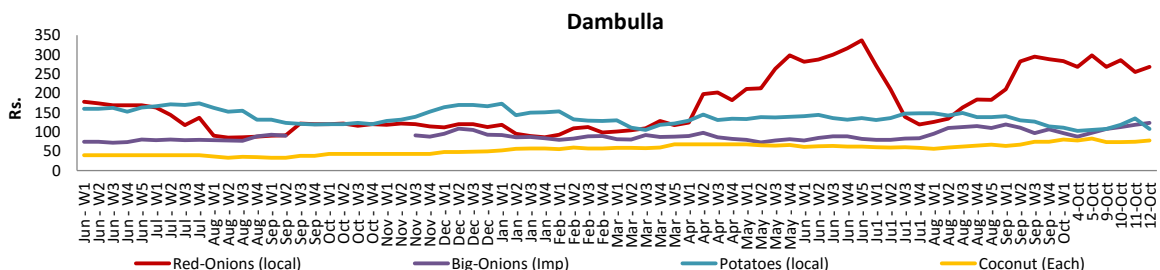
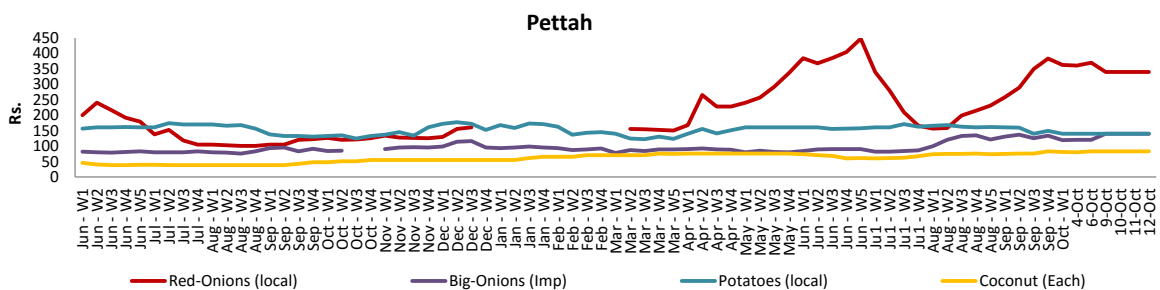
Price increased by more than 5% compared to previous week average price.

Price decreased by more than 5% compared to previous week average price.

### Wholesale Prices



### Retail Prices



\* Prices of food commodities may vary due to quality and markets among other factors.