

Wholesale and Retail Prices of Selected Food Commodities

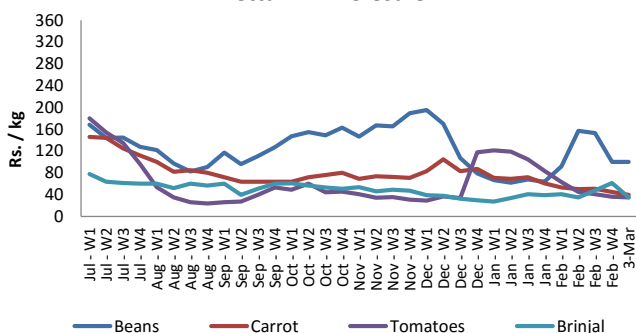


Vegetables

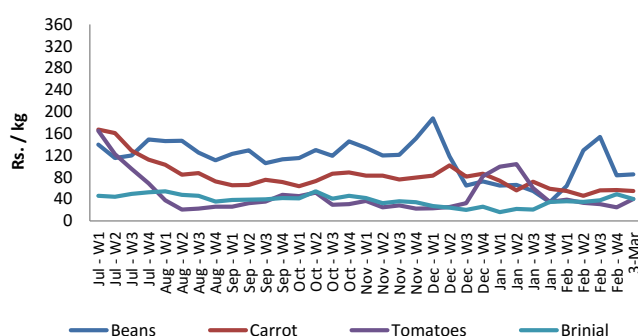
Item	Unit	Pettah				Dambulla			
		Wholesale		Retail		Wholesale		Retail	
		Previous 5 Days Average	3-Mar	Previous 5 Days Average	3-Mar	Previous 5 Days Average	3-Mar	Previous 5 Days Average	3-Mar
Beans	Rs./Kg	105.00	100.00	139.00	130.00	69.00	85.00	96.00	105.00
Carrot	Rs./Kg	46.00	40.00	77.00	70.00	41.00	55.00	66.00	75.00
Cabbage	Rs./Kg	17.00	20.00	43.00	45.00	15.00	25.00	31.00	45.00
Tomatoes	Rs./Kg	38.00	35.00	66.00	60.00	36.00	40.00	59.00	55.00
Brinjal	Rs./Kg	50.00	35.00	78.00	60.00	44.00	40.00	66.00	55.00
Pumpkin	Rs./Kg	61.00	60.00	86.00	80.00	53.00	40.00	74.00	55.00
Snake gourd	Rs./Kg	89.00	80.00	114.00	100.00	54.00	50.00	79.00	65.00

- Price increased by more than 5% compared to previous week average price.
- Price decreased by more than 5% compared to previous week average price.

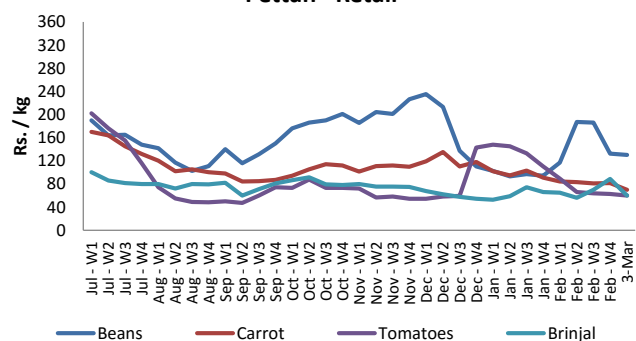
Pettah - Wholesale



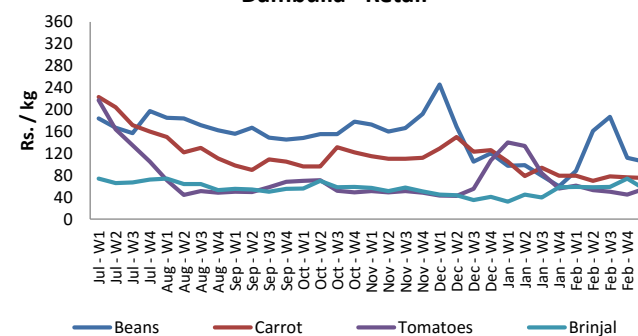
Dambulla - Wholesale



Pettah - Retail



Dambulla - Retail



Wholesale and Retail Prices of Selected Food Commodities

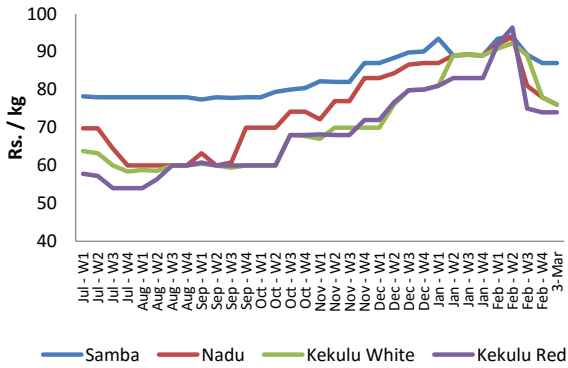


Rice

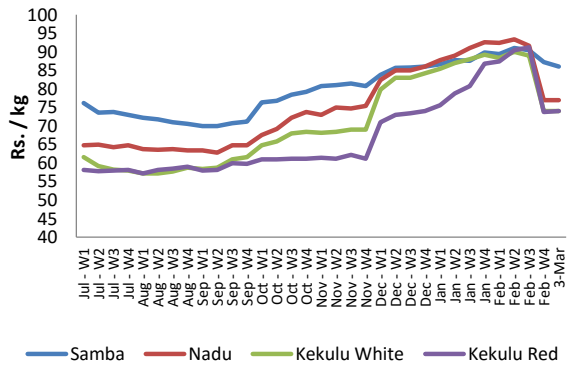
Item	Unit	Pettah				Marandagahamula	
		Wholesale		Retail		Wholesale	
		Previous 5 Days Average	3-Mar	Previous 5 Days Average	3-Mar	Previous 5 Days Average	3-Mar
Samba	Rs./Kg	87.00	87.00	90.00	90.00	86.00	86.00
Nadu	Rs./Kg	76.00	76.00	80.00	80.00	76.00	77.00
Kekulu White	Rs./Kg	77.00	76.00	79.00	78.00	74.00	74.00
Kekulu Red	Rs./Kg	74.00	74.00	78.00	78.00	74.00	74.00

- Price increased by more than 5% compared to previous week average price.
- Price decreased by more than 5% compared to previous week average price.

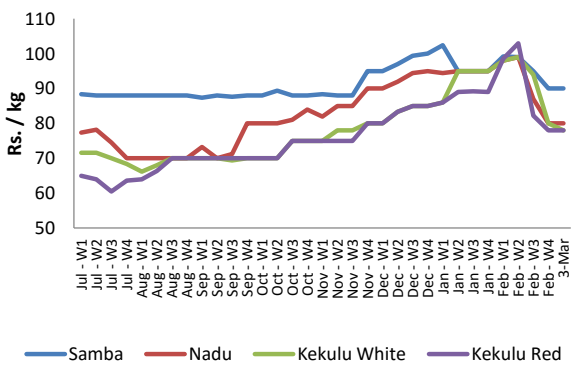
Pettah - Wholesale



Marandagahamula - Wholesale



Pettah - Retail



Wholesale and Retail Prices of Selected Food

Commodities

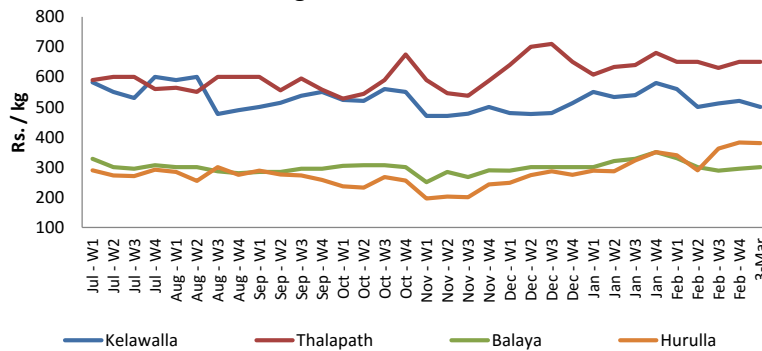


Fish

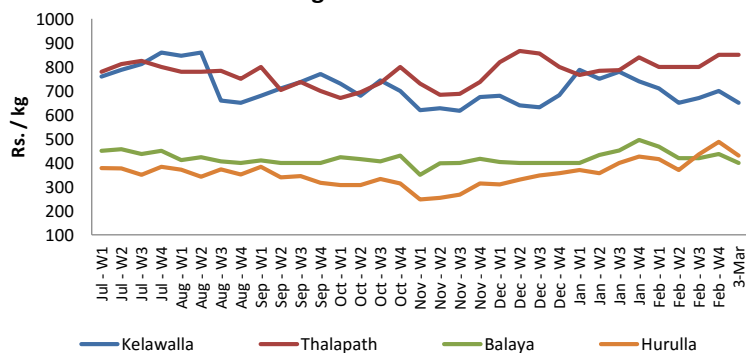
Item	Unit	Negombo Fish Market			
		Wholesale		Retail	
		Previous 5 Days Average	3-Mar	Previous 5 Days Average	3-Mar
Kelawalla	Rs./Kg	504.00	500.00	686.00	650.00
Thalapath	Rs./Kg	650.00	650.00	850.00	850.00
Balaya	Rs./Kg	264.00	300.00	376.00	400.00
Paraw	Rs./Kg	530.00	500.00	730.00	700.00
Salaya	Rs./Kg	132.00	150.00	180.00	200.00
Hurulla	Rs./Kg	358.00	380.00	456.00	430.00

- Price increased by more than 5% compared to previous week average price.
- Price decreased by more than 5% compared to previous week average price.

Negombo - Wholesale



Negombo - Retail



Wholesale and Retail Prices of Selected Food Commodities

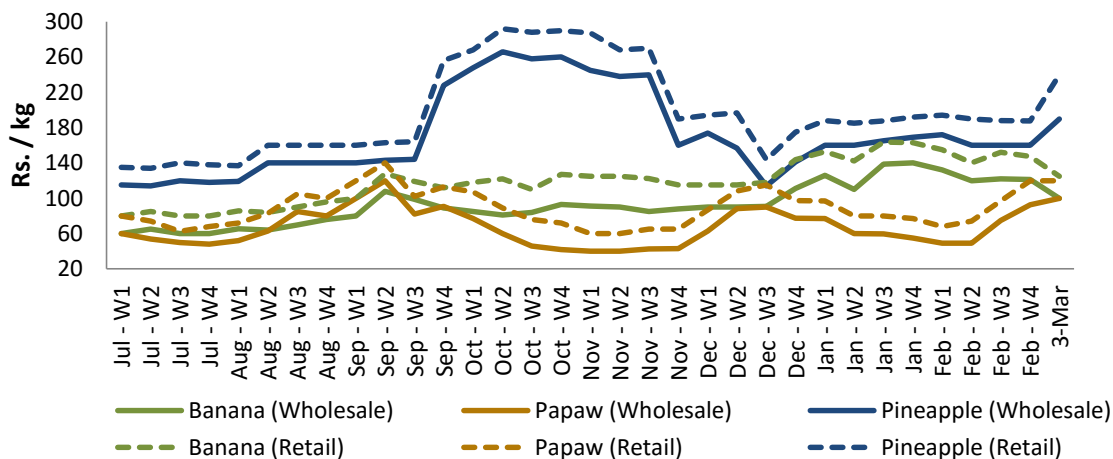


Fruits

Item	Unit	Pettah			
		Wholesale		Retail	
		Previous 5 Days Average	3-Mar	Previous 5 Days Average	3-Mar
Banana (Sour)	Rs./Kg	101.00	100.00	127.00	125.00
Papaw	Rs./Kg	94.00	100.00	122.00	120.00
Pineapple	Rs./Kg	164.00	190.00	202.00	240.00

- Price increased by more than 5% compared to previous week average price.
- Price decreased by more than 5% compared to previous week average price.

Pettah - Wholesale and Retail



Wholesale and Retail Prices of Selected Food Commodities



Other

Item	Unit	Pettah				Dambulla			
		Wholesale		Retail		Wholesale		Retail	
		Previous 5 Days Average	3-Mar	Previous 5 Days Average	3-Mar	Previous 5 Days Average	3-Mar	Previous 5 Days Average	3-Mar
Red-Onions (local)	Rs./Kg	n.a.	n.a.	n.a.	n.a.	72.00	100.00	96.00	115.00
Red-Onions (Imp)	Rs./Kg	93.00	93.00	125.00	125.00	95.00	95.00	107.00	110.00
Big-Onions (local)	Rs./Kg	n.a.	n.a.	n.a.	n.a.	68.00	n.a.	83.00	n.a.
Big-Onions (Imp)	Rs./Kg	66.00	65.00	79.00	80.00	68.00	64.00	81.00	84.00
Potatoes (local)	Rs./Kg	120.00	105.00	140.00	140.00	115.00	110.00	129.00	135.00
Potatoes (Imp)	Rs./Kg	76.00	70.00	97.00	90.00				
Dried Chillies (Imp)	Rs./Kg	228.00	220.00	266.00	260.00	197.00	198.00	218.00	215.00
Coconut	Rs./Nut	58.00	58.00	70.00	70.00	50.00	53.00	59.00	59.00
Coconut oil	Rs./Ltr	330.00	330.00	360.00	360.00				
Dhal	Rs./Kg	134.00	135.00	150.00	150.00				
Sugar	Rs./Kg	98.00	103.00	106.00	108.00				
Eggs	Rs./Each	13.00	13.00	14.00	14.00				
Katta	Rs./Kg	790.00	775.00	840.00	825.00				
Sprats	Rs./Kg	450.00	450.00	500.00	500.00				

- Price increased by more than 5% compared to previous week average price.
- Price decreased by more than 5% compared to previous week average price.

