

## Wholesale and Retail Prices of Selected Food Commodities

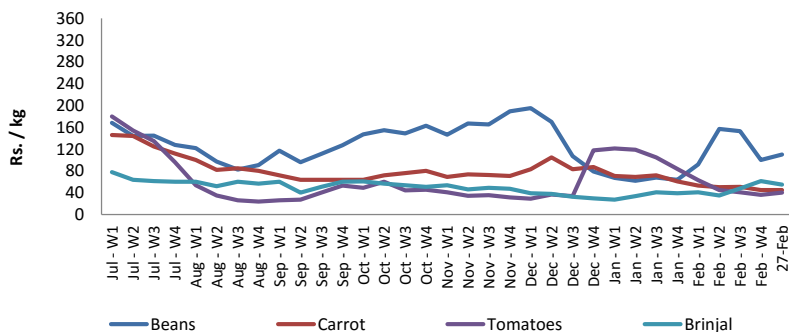


### Vegetables

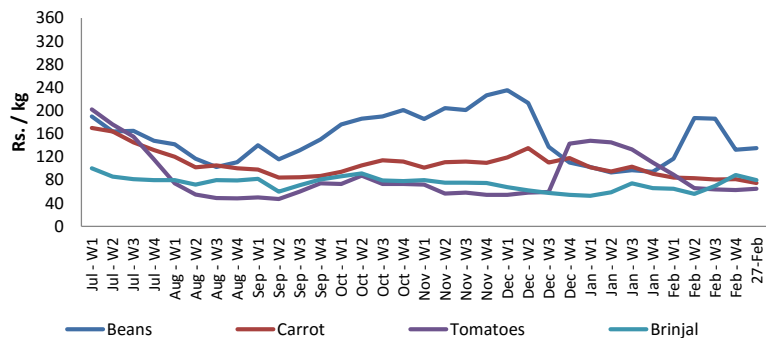
Item	Unit	Pettah			
		Wholesale		Retail	
		Previous 5 Days Average	27-Feb	Previous 5 Days Average	27-Feb
Beans	Rs./Kg	102.00	110.00	137.00	135.00
Carrot	Rs./Kg	46.00	45.00	81.00	75.00
Cabbage	Rs./Kg	16.00	20.00	41.00	50.00
Tomatoes	Rs./Kg	37.00	40.00	63.00	65.00
Brinjal	Rs./Kg	63.00	55.00	89.00	80.00
Pumpkin	Rs./Kg	58.00	65.00	81.00	90.00
Snake gourd	Rs./Kg	88.00	90.00	114.00	110.00

- Price increased by more than 5% compared to previous week average price.
- Price decreased by more than 5% compared to previous week average price.

**Pettah - Wholesale**



**Pettah - Retail**



# Wholesale and Retail Prices of Selected Food Commodities

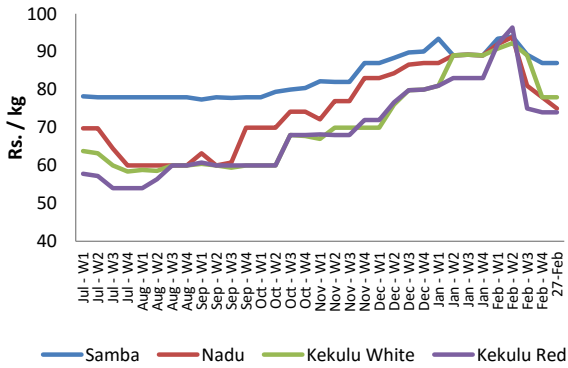


## Rice

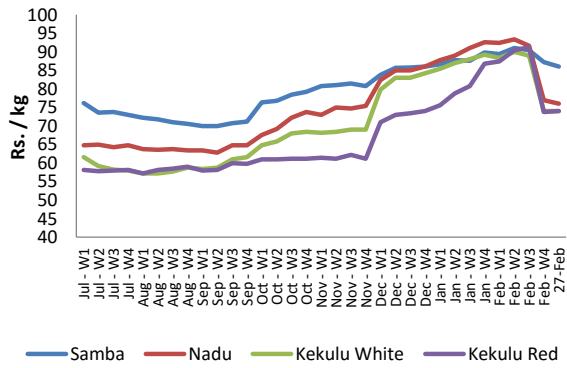
Item	Unit	Pettah				Marandagahamula	
		Wholesale		Retail		Wholesale	
		Previous 5 Days Average	27-Feb	Previous 5 Days Average	27-Feb	Previous 5 Days Average	27-Feb
Samba	Rs./Kg	87.00	87.00	91.00	90.00	88.00	86.00
Nadu	Rs./Kg	82.00	75.00	85.00	80.00	80.00	76.00
Kekulu White	Rs./Kg	80.00	78.00	82.00	80.00	77.00	74.00
Kekulu Red	Rs./Kg	74.00	74.00	80.00	78.00	77.00	74.00

- Price increased by more than 5% compared to previous week average price.
- Price decreased by more than 5% compared to previous week average price.

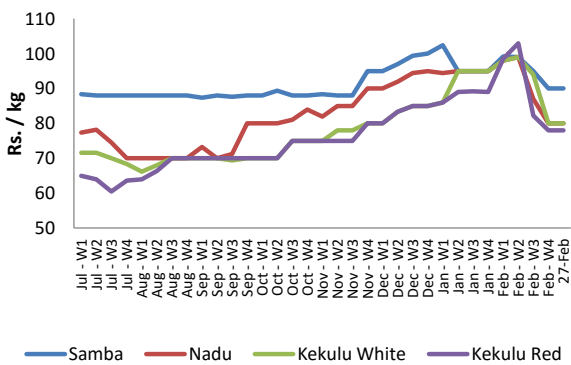
**Pettah - Wholesale**



**Marandagahamula - Wholesale**



**Pettah - Retail**



## Wholesale and Retail Prices of Selected Food Commodities

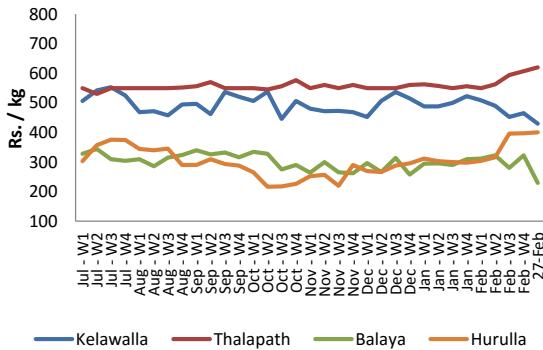


### Fish

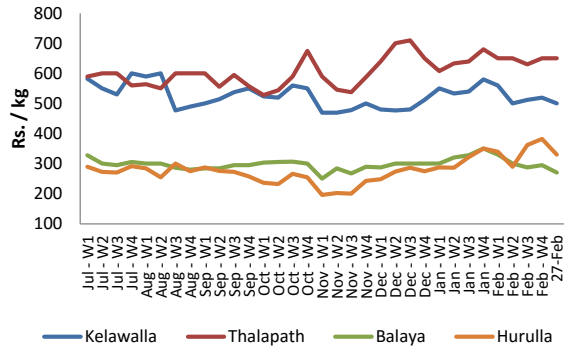
Item	Unit	Peliyagoda Fish Market				Negombo Fish Market			
		Wholesale		Retail		Wholesale		Retail	
		Previous 5 Days Average	27-Feb	Previous 5 Days Average	27-Feb	Previous 5 Days Average	27-Feb	Previous 5 Days Average	27-Feb
Kelawalla	Rs./Kg	468.00	430.00	710.00	740.00	522.00	500.00	700.00	700.00
Thalapath	Rs./Kg	605.00	620.00	760.00	760.00	650.00	650.00	850.00	850.00
Balaya	Rs./Kg	314.00	230.00	412.00	340.00	296.00	270.00	440.00	370.00
Paraw	Rs./Kg	530.00	420.00	916.00	800.00	530.00	550.00	710.00	750.00
Salaya	Rs./Kg	86.00	80.00	140.00	140.00	144.00	150.00	194.00	200.00
Hurulla	Rs./Kg	403.00	400.00	500.00	500.00	382.00	330.00	480.00	430.00

- Price increased by more than 5% compared to previous week average price.
- Price decreased by more than 5% compared to previous week average price.

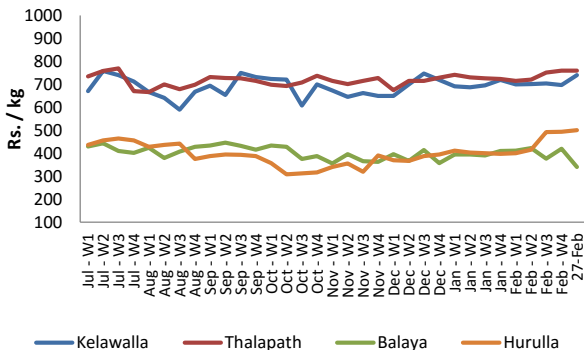
**Peliyagoda - Wholesale**



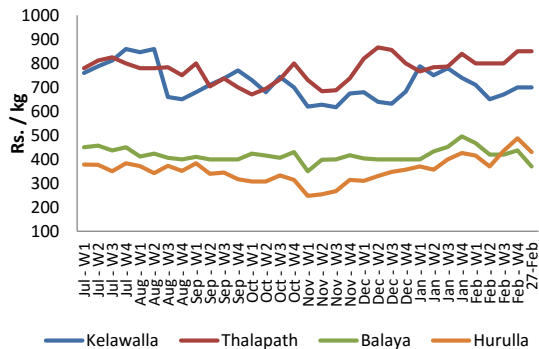
**Negombo - Wholesale**



**Peliyagoda - Retail**



**Negombo - Retail**



## Wholesale and Retail Prices of Selected Food Commodities

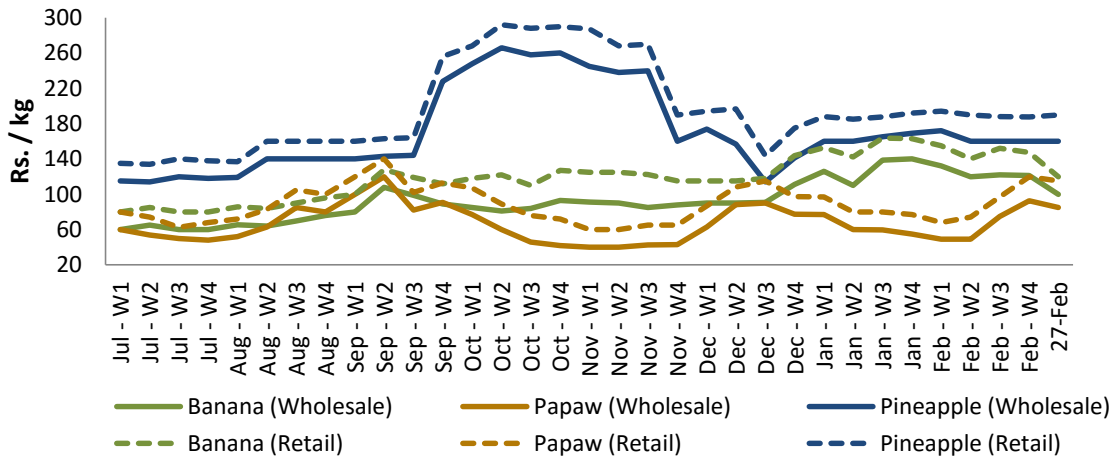


### Fruits

Item	Unit	Pettah			
		Wholesale		Retail	
		Previous 5 Days Average	27-Feb	Previous 5 Days Average	27-Feb
Banana (Sour)	Rs./Kg	121.00	100.00	148.00	120.00
Papaw	Rs./Kg	91.00	85.00	118.00	115.00
Pineapple	Rs./Kg	160.00	160.00	186.00	190.00

- Price increased by more than 5% compared to previous week average price.
- Price decreased by more than 5% compared to previous week average price.

**Pettah - Wholesale and Retail**



**WHOLESALE AND RETAIL PRICES OF SELECTED FOOD**

**Commodities**

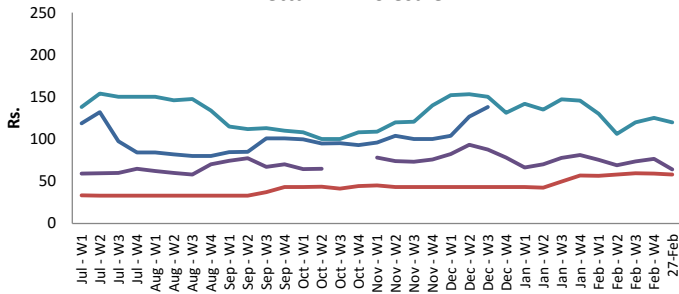


**Other**

Item	Unit	Pettah			
		Wholesale		Retail	
		Previous 5 Days Average	27-Feb	Previous 5 Days Average	27-Feb
Red-Onions (local)	Rs./Kg	n.a.	n.a.	n.a.	n.a.
Red-Onions (Imp)	Rs./Kg	94.00	93.00	125.00	125.00
Big-Onions (local)	Rs./Kg	n.a.	n.a.	n.a.	n.a.
Big-Onions (Imp)	Rs./Kg	79.00	64.00	94.00	75.00
Potatoes (local)	Rs./Kg	124.00	120.00	144.00	140.00
Potatoes (Imp)	Rs./Kg	83.00	85.00	102.00	105.00
Dried Chillies (Imp)	Rs./Kg	220.00	220.00	266.00	260.00
Coconut	Rs./Nut	59.00	58.00	70.00	70.00
Coconut oil	Rs./Ltr	323.00	330.00	346.00	360.00
Dhal	Rs./Kg	135.00	135.00	150.00	150.00
Sugar	Rs./Kg	95.00	95.00	105.00	105.00
Eggs	Rs./Each	13.00	13.00	14.00	14.00
Katta	Rs./Kg	800.00	800.00	850.00	850.00
Sprats	Rs./Kg	450.00	450.00	500.00	500.00

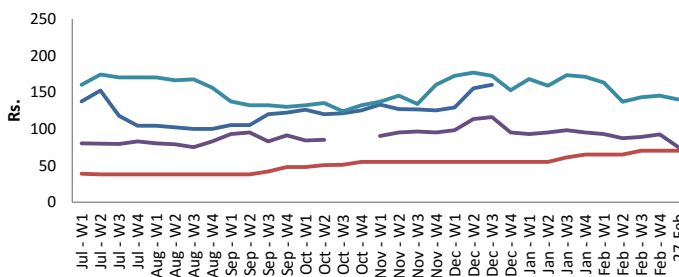
- Price increased by more than 5% compared to previous week average price.
- Price decreased by more than 5% compared to previous week average price.

**Pettah - Wholesale**



— Red-Onions (local) — Big-Onions (Imp) — Potatoes (local) — Coconut (Each)

**Pettah - Retail**



— Red-Onions (local) — Big-Onions (Imp) — Potatoes (local) — Coconut (Each)