

Wholesale and Retail Prices of Selected Food Commodities

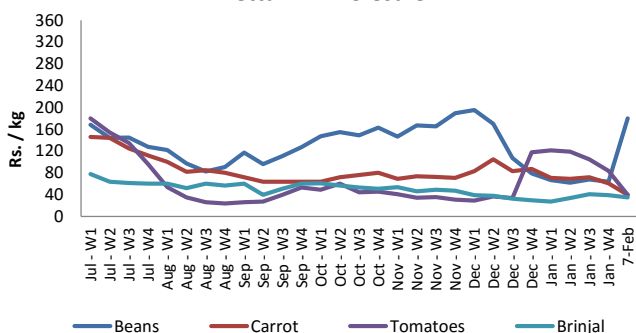


Vegetables

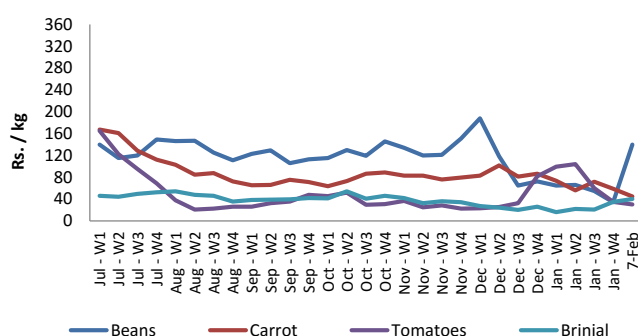
Item	Unit	Pettah				Dambulla			
		Wholesale		Retail		Wholesale		Retail	
		Previous 5 Days Average	7-Feb	Previous 5 Days Average	7-Feb	Previous 5 Days Average	7-Feb	Previous 5 Days Average	7-Feb
Beans	Rs./Kg	111.00	180.00	140.00	205.00	83.00	140.00	112.00	175.00
Carrot	Rs./Kg	52.00	40.00	84.00	75.00	55.00	45.00	77.00	65.00
Cabbage	Rs./Kg	20.00	20.00	45.00	45.00	14.00	10.00	30.00	25.00
Tomatoes	Rs./Kg	57.00	40.00	82.00	60.00	37.00	30.00	58.00	50.00
Brinjal	Rs./Kg	39.00	35.00	62.00	55.00	34.00	40.00	57.00	65.00
Pumpkin	Rs./Kg	45.00	45.00	67.00	65.00	43.00	45.00	62.00	65.00
Snake gourd	Rs./Kg	44.00	55.00	64.00	75.00	34.00	35.00	53.00	55.00

- Price increased by more than 5% compared to previous week average price.
- Price decreased by more than 5% compared to previous week average price.

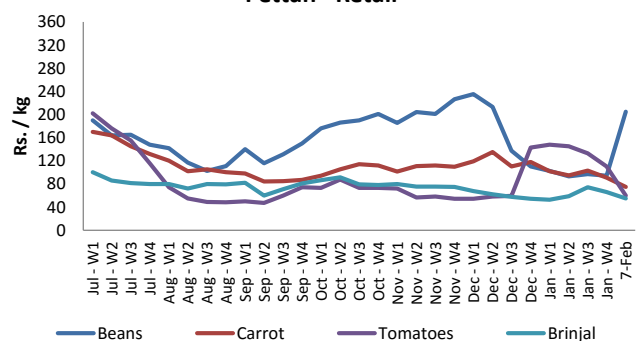
Pettah - Wholesale



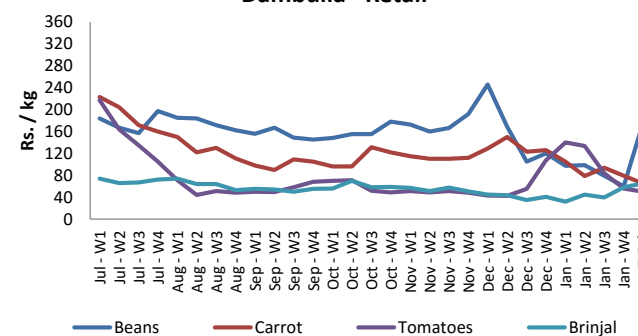
Dambulla - Wholesale



Pettah - Retail



Dambulla - Retail



Wholesale and Retail Prices of Selected Food Commodities

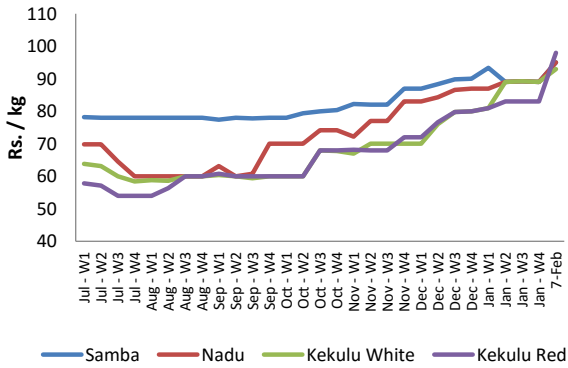


Rice

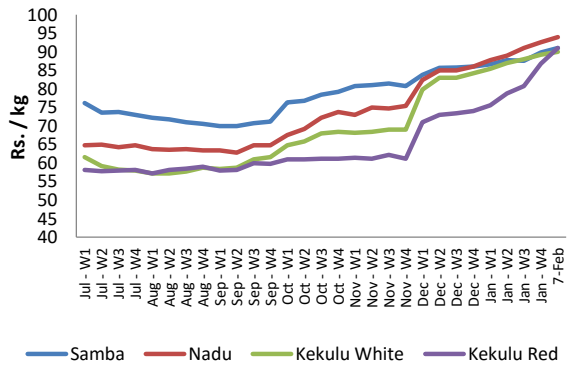
Item	Unit	Pettah				Marandagahamula	
		Wholesale		Retail		Wholesale	
		Previous 5 Days Average	7-Feb	Previous 5 Days Average	7-Feb	Previous 5 Days Average	7-Feb
Samba	Rs./Kg	94.00	95.00	100.00	100.00	90.00	91.00
Nadu	Rs./Kg	93.00	95.00	99.00	100.00	93.00	94.00
Kekulu White	Rs./Kg	92.00	93.00	99.00	100.00	89.00	90.00
Kekulu Red	Rs./Kg	95.00	98.00	102.00	105.00	88.00	91.00

- Price increased by more than 5% compared to previous week average price.
- Price decreased by more than 5% compared to previous week average price.

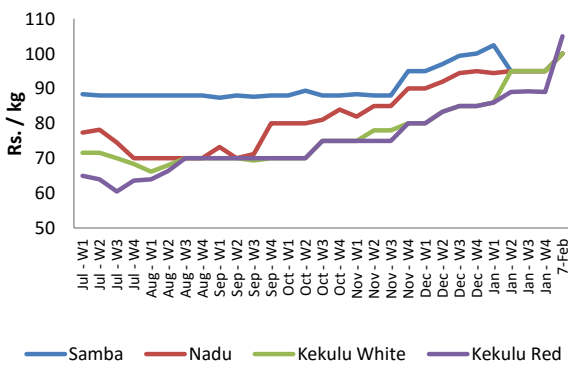
Pettah - Wholesale



Marandagahamula - Wholesale



Pettah - Retail



Wholesale and Retail Prices of Selected Food Commodities

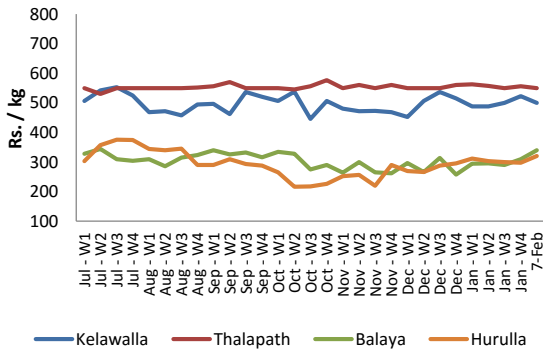


Fish

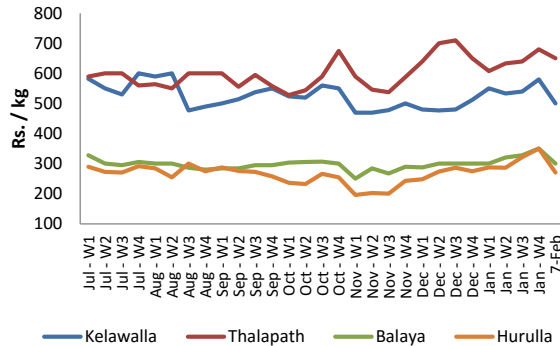
Item	Unit	Peliyagoda Fish Market				Negombo Fish Market			
		Wholesale		Retail		Wholesale		Retail	
		Previous 5 Days Average	7-Feb	Previous 5 Days Average	7-Feb	Previous 5 Days Average	7-Feb	Previous 5 Days Average	7-Feb
Kelawalla	Rs./Kg	508.00	500.00	700.00	700.00	540.00	500.00	690.00	650.00
Thalapath	Rs./Kg	550.00	550.00	715.00	715.00	650.00	650.00	800.00	800.00
Balaya	Rs./Kg	318.00	340.00	418.00	440.00	320.00	300.00	452.00	420.00
Paraw	Rs./Kg	510.00	520.00	714.00	730.00	514.00	500.00	690.00	700.00
Salaya	Rs./Kg	96.00	100.00	154.00	160.00	134.00	120.00	184.00	170.00
Hurulla	Rs./Kg	304.00	320.00	400.00	420.00	318.00	270.00	396.00	350.00

- Price increased by more than 5% compared to previous week average price.
- Price decreased by more than 5% compared to previous week average price.

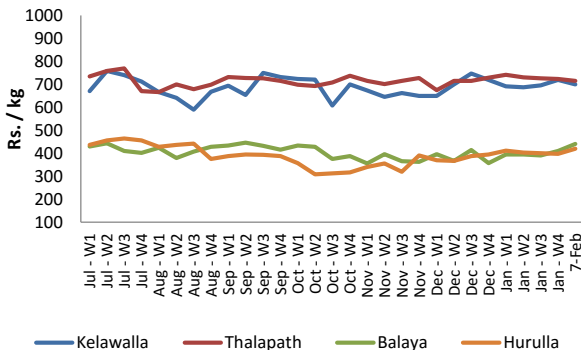
Peliyagoda - Wholesale



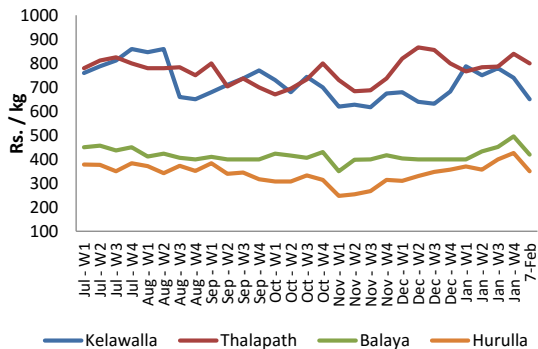
Negombo - Wholesale



Peliyagoda - Retail



Negombo - Retail



Wholesale and Retail Prices of Selected Food Commodities

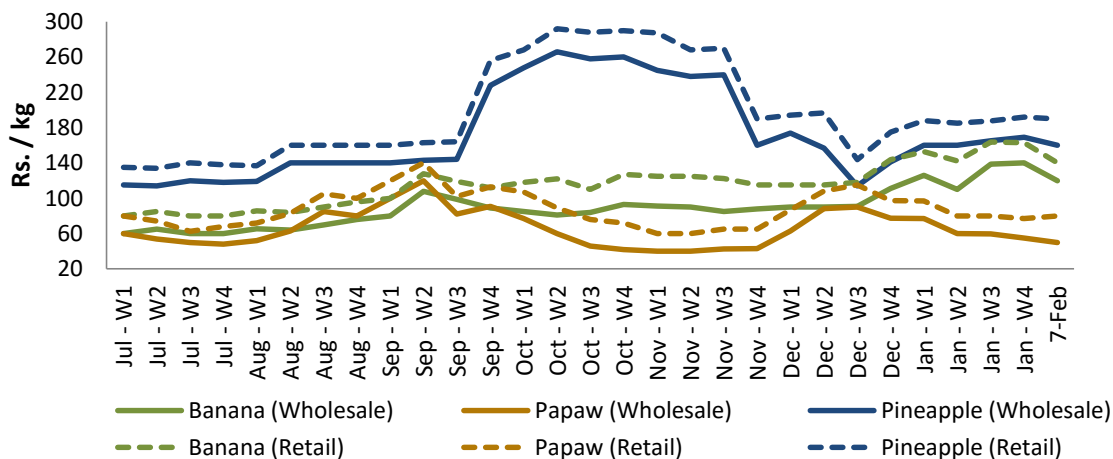


Fruits

Item	Unit	Pettah			
		Wholesale		Retail	
		Previous 5 Days Average	7-Feb	Previous 5 Days Average	7-Feb
Banana (Sour)	Rs./Kg	128.00	120.00	150.00	140.00
Papaw	Rs./Kg	49.00	50.00	69.00	80.00
Pineapple	Rs./Kg	170.00	160.00	194.00	190.00

- Price increased by more than 5% compared to previous week average price.
- Price decreased by more than 5% compared to previous week average price.

Pettah - Wholesale and Retail



Wholesale and Retail Prices of Selected Food Commodities



Other

Item	Unit	Pettah				Dambulla			
		Wholesale		Retail		Wholesale		Retail	
		Previous 5 Days Average	7-Feb	Previous 5 Days Average	7-Feb	Previous 5 Days Average	7-Feb	Previous 5 Days Average	7-Feb
Red-Onions (local)	Rs./Kg	n.a.	n.a.	n.a.	n.a.	75.00	95.00	97.00	118.00
Red-Onions (Imp)	Rs./Kg	93.00	93.00	119.00	115.00	99.00	105.00	114.00	118.00
Big-Onions (local)	Rs./Kg	n.a.	n.a.	n.a.	n.a.	n.a.	n.a.	n.a.	n.a.
Big-Onions (Imp)	Rs./Kg	73.00	69.00	91.00	85.00	68.00	73.00	79.00	88.00
Potatoes (local)	Rs./Kg	122.00	100.00	154.00	130.00	129.00	115.00	148.00	128.00
Potatoes (Imp)	Rs./Kg	80.00	70.00	101.00	90.00				
Dried Chillies (Imp)	Rs./Kg	256.00	250.00	294.00	290.00	202.00	198.00	218.00	215.00
Coconut	Rs./Nut	57.00	58.00	65.00	65.00	49.00	53.00	57.00	60.00
Coconut oil	Rs./Ltr	306.00	320.00	329.00	340.00				
Dhal	Rs./Kg	149.00	147.00	160.00	158.00				
Sugar	Rs./Kg	95.00	95.00	103.00	105.00				
Eggs	Rs./Each	13.00	13.00	14.00	14.00				
Katta	Rs./Kg	860.00	800.00	910.00	850.00				
Sprats	Rs./Kg	510.00	450.00	554.00	500.00				

- Price increased by more than 5% compared to previous week average price.
- Price decreased by more than 5% compared to previous week average price.

