

Wholesale and Retail Prices of Selected Food Commodities

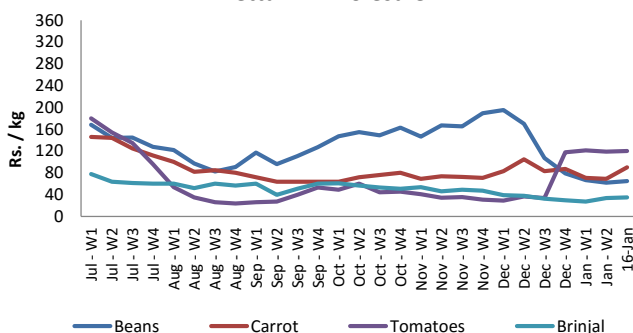


Vegetables

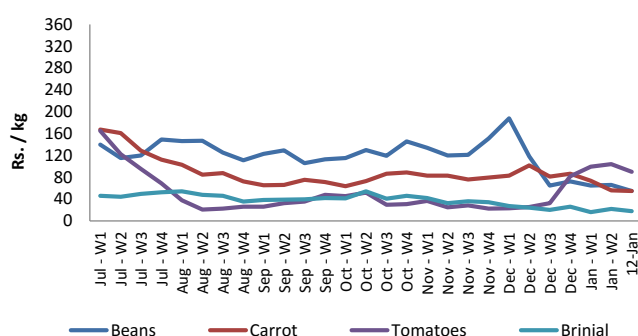
Item	Unit	Pettah				Dambulla			
		Wholesale		Retail		Wholesale		Retail	
		Previous 5 Days Average	16-Jan	Previous 5 Days Average	16-Jan	Previous 5 Days Average	16-Jan	Previous 5 Days Average	16-Jan
Beans	Rs./Kg	61.00	65.00	94.00	95.00	66.00	55.00	97.00	80.00
Carrot	Rs./Kg	68.00	90.00	95.00	115.00	58.00	55.00	82.00	75.00
Cabbage	Rs./Kg	19.00	20.00	46.00	50.00	15.00	13.00	34.00	30.00
Tomatoes	Rs./Kg	118.00	120.00	144.00	150.00	102.00	90.00	135.00	115.00
Brinjal	Rs./Kg	34.00	35.00	58.00	75.00	21.00	18.00	43.00	33.00
Pumpkin	Rs./Kg	58.00	55.00	78.00	75.00	47.00	43.00	67.00	65.00
Snake gourd	Rs./Kg	41.00	35.00	64.00	70.00	32.00	35.00	53.00	55.00

- Price increased by more than 5% compared to previous week average price.
- Price decreased by more than 5% compared to previous week average price.

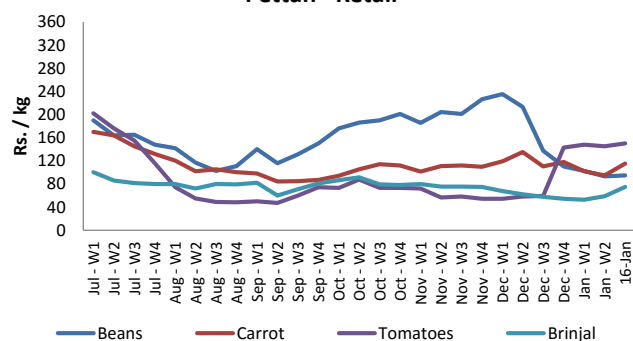
Pettah - Wholesale



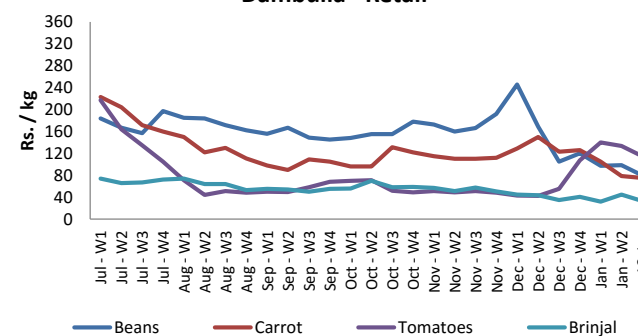
Dambulla - Wholesale



Pettah - Retail



Dambulla - Retail



Wholesale and Retail Prices of Selected Food Commodities

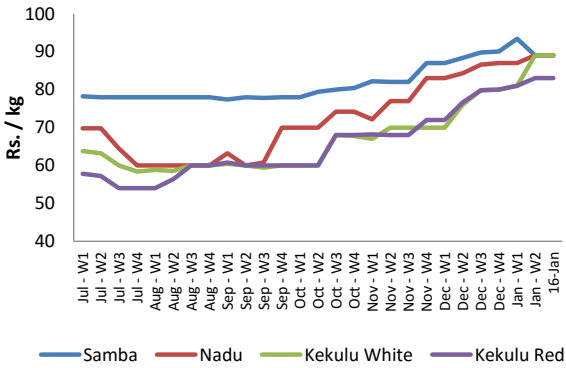


Rice

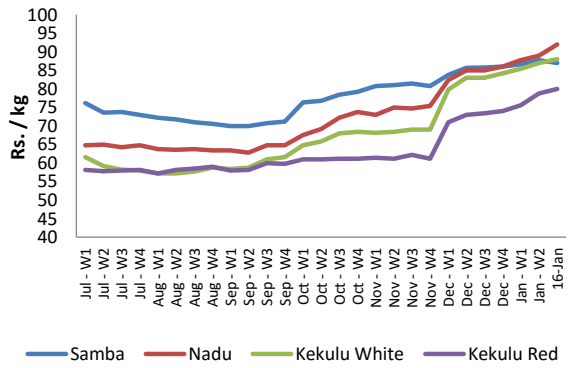
Item	Unit	Pettah				Marandagahamula	
		Wholesale		Retail		Wholesale	
		Previous 5 Days Average	16-Jan	Previous 5 Days Average	16-Jan	Previous 5 Days Average	16-Jan
Samba	Rs./Kg	90.00	89.00	96.00	95.00	88.00	87.00
Nadu	Rs./Kg	88.00	89.00	94.00	95.00	89.00	92.00
Kekulu White	Rs./Kg	88.00	89.00	93.00	95.00	87.00	88.00
Kekulu Red	Rs./Kg	83.00	83.00	89.00	89.00	78.00	80.00

- Price increased by more than 5% compared to previous week average price.
- Price decreased by more than 5% compared to previous week average price.

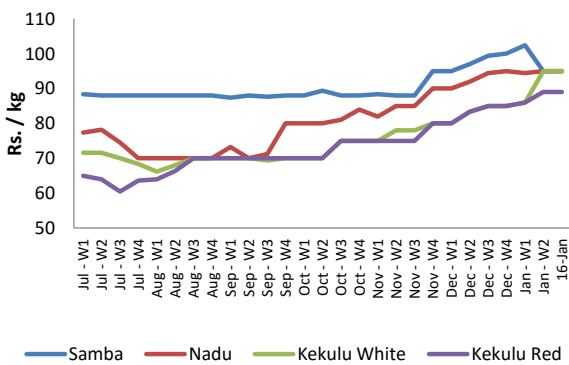
Pettah - Wholesale



Marandagahamula - Wholesale



Pettah - Retail



Wholesale and Retail Prices of Selected Food Commodities

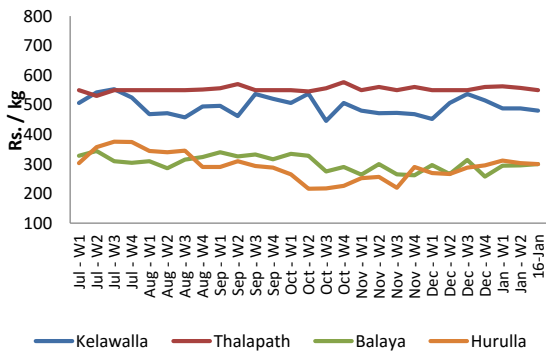


Fish

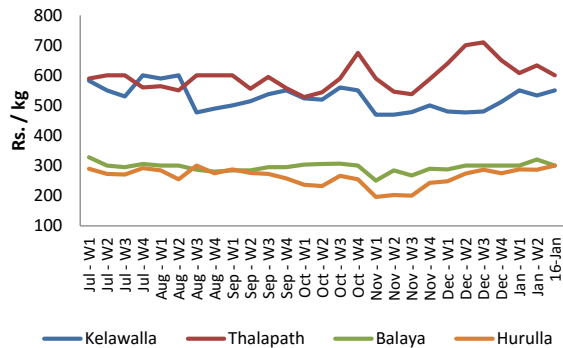
Item	Unit	Peliyagoda Fish Market				Negombo Fish Market			
		Wholesale		Retail		Wholesale		Retail	
		Previous 5 Days Average	16-Jan	Previous 5 Days Average	16-Jan	Previous 5 Days Average	16-Jan	Previous 5 Days Average	16-Jan
Kelawalla	Rs./Kg	488.00	480.00	686.00	650.00	538.00	550.00	763.00	800.00
Thalapath	Rs./Kg	558.00	550.00	731.00	770.00	625.00	600.00	775.00	750.00
Balaya	Rs./Kg	298.00	300.00	398.00	400.00	315.00	300.00	425.00	400.00
Paraw	Rs./Kg	506.00	500.00	708.00	750.00	513.00	500.00	700.00	700.00
Salaya	Rs./Kg	116.00	130.00	178.00	180.00	125.00	140.00	175.00	200.00
Hurulla	Rs./Kg	304.00	300.00	404.00	400.00	280.00	300.00	345.00	380.00

- Price increased by more than 5% compared to previous week average price.
- Price decreased by more than 5% compared to previous week average price.

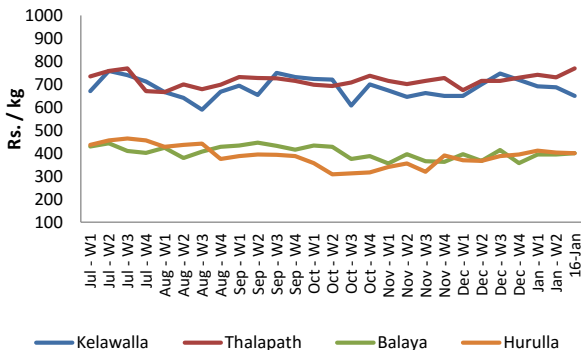
Peliyagoda - Wholesale



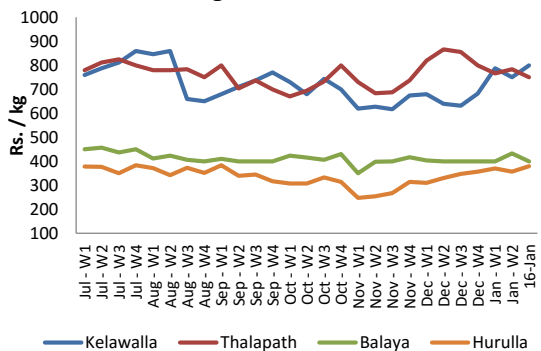
Negombo - Wholesale



Peliyagoda - Retail



Negombo - Retail



Wholesale and Retail Prices of Selected Food Commodities

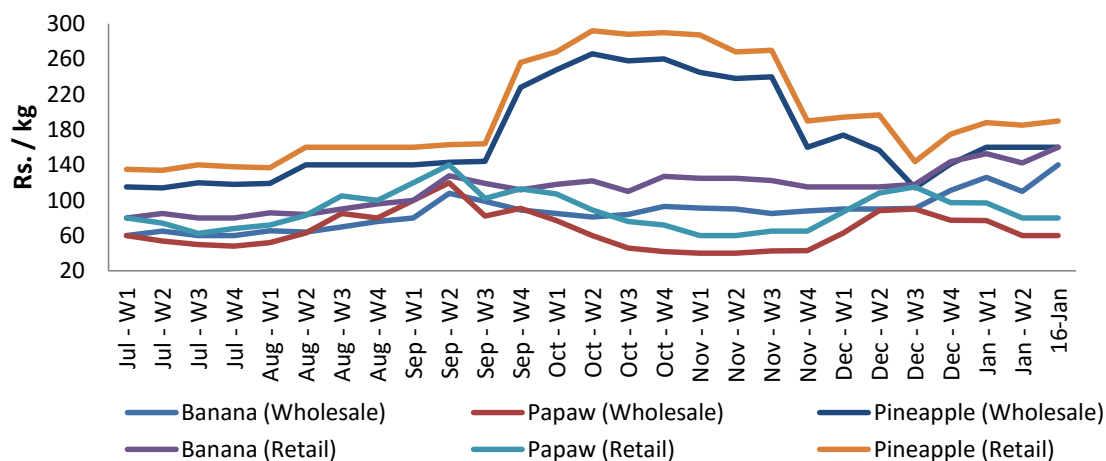


Fruits

Item	Unit	Pettah			
		Wholesale		Retail	
		Previous 5 Days Average	16-Jan	Previous 5 Days Average	16-Jan
Banana (Sour)	Rs./Kg	107.00	140.00	139.00	160.00
Papaw	Rs./Kg	63.00	60.00	83.00	80.00
Pineapple	Rs./Kg	160.00	160.00	184.00	190.00

- Price increased by more than 5% compared to previous week average price.
- Price decreased by more than 5% compared to previous week average price.

Pettah - Wholesale and Retail



Wholesale and Retail Prices of Selected Food Commodities



Other

Item	Unit	Pettah				Dambulla			
		Wholesale		Retail		Wholesale		Retail	
		Previous 5 Days Average	16-Jan	Previous 5 Days Average	16-Jan	Previous 5 Days Average	16-Jan	Previous 5 Days Average	16-Jan
Red-Onions (local)	Rs./Kg	n.a.	n.a.	n.a.	n.a.	74.00	n.a.	95.00	n.a.
Red-Onions (Imp)	Rs./Kg	80.00	80.00	120.00	110.00	90.00	88.00	108.00	98.00
Big-Onions (local)	Rs./Kg	n.a.	n.a.	n.a.	n.a.	65.80	68.00	81.00	78.00
Big-Onions (Imp)	Rs./Kg	69.00	70.00	93.00	95.00	72.00	73.00	87.00	83.00
Potatoes (local)	Rs./Kg	136.00	159.00	130.00	133.00	146.00	148.00		
Potatoes (Imp)	Rs./Kg	80.00	80.00	100.00	100.00				
Dried Chillies (Imp)	Rs./Kg	249.00	240.00	308.00	236.00	233.00	251.00	245.00	
Coconut	Rs./Nut	42.00	43.00	55.00	55.00	45.00	55.00	57.00	
Coconut oil	Rs./Ltr	244.00	240.00	280.00	280.00				
Dhal	Rs./Kg	160.00	160.00	169.00	169.00				
Sugar	Rs./Kg	95.00	95.00	101.00	103.00				
Eggs	Rs./Each	12.00	12.00	13.00	13.00				
Katta	Rs./Kg	904.00	900.00	952.00	950.00				
Sprats	Rs./Kg	524.00	540.00	562.00	590.00				

- Price increased by more than 5% compared to previous week average price.
- Price decreased by more than 5% compared to previous week average price.

