

Wholesale and Retail Prices of Selected Food Commodities

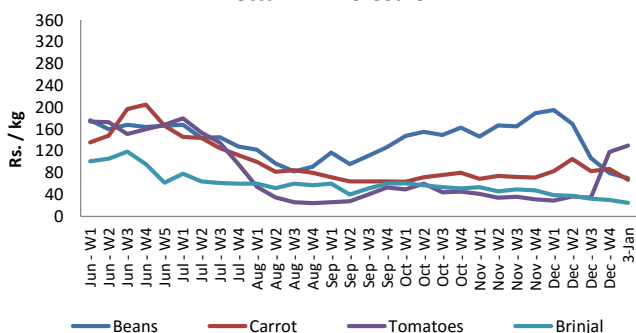


Vegetables

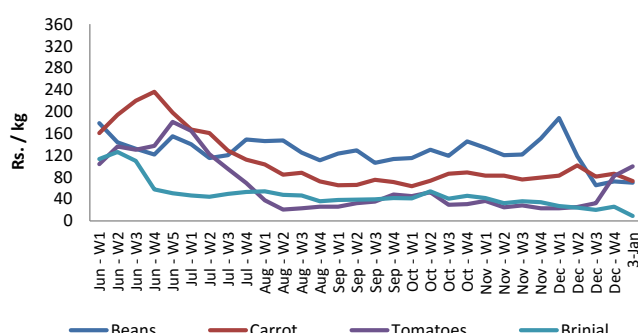
| Item | Unit | Pettah | | | | Dambulla | | | |
|-------------|--------|-------------------------|--------|-------------------------|--------|-------------------------|--------|-------------------------|--------|
| | | Wholesale | | Retail | | Wholesale | | Retail | |
| | | Previous 5 Days Average | 3-Jan | Previous 5 Days Average | 3-Jan | Previous 5 Days Average | 3-Jan | Previous 5 Days Average | 3-Jan |
| Beans | Rs./Kg | 77.00 | 70.00 | 111.00 | 110.00 | 68.00 | 70.00 | 113.00 | 95.00 |
| Carrot | Rs./Kg | 85.00 | 67.00 | 116.00 | 97.00 | 83.00 | 73.00 | 120.00 | 98.00 |
| Cabbage | Rs./Kg | 19.00 | 18.00 | 48.00 | 47.00 | 17.00 | 13.00 | 32.00 | 30.00 |
| Tomatoes | Rs./Kg | 118.00 | 130.00 | 144.00 | 150.00 | 84.00 | 100.00 | 111.00 | 140.00 |
| Brinjal | Rs./Kg | 30.00 | 25.00 | 54.00 | 50.00 | 23.00 | 9.00 | 38.00 | 24.00 |
| Pumpkin | Rs./Kg | 44.00 | 45.00 | 65.00 | 65.00 | 37.00 | 45.00 | 52.00 | 68.00 |
| Snake gourd | Rs./Kg | 34.00 | 30.00 | 65.00 | 57.00 | 31.00 | 30.00 | 57.00 | 50.00 |

- Price increased by more than 5% compared to previous week average price.
- Price decreased by more than 5% compared to previous week average price.

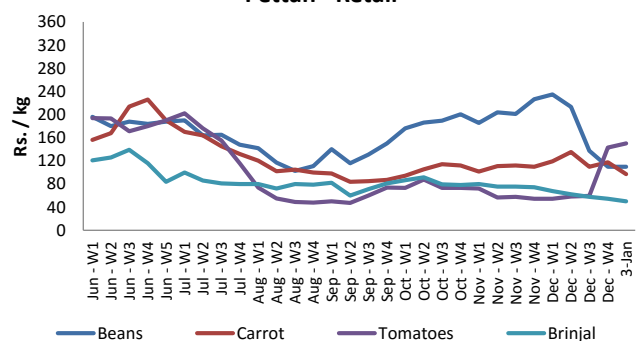
Pettah - Wholesale



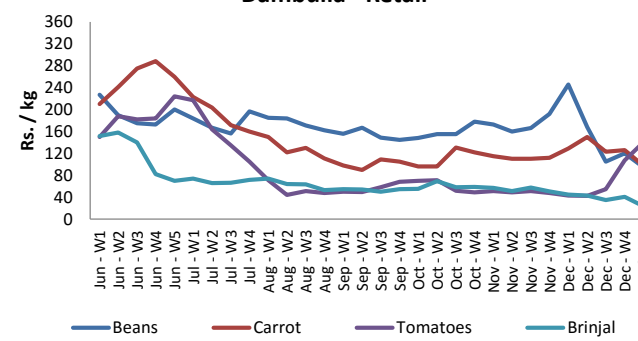
Dambulla - Wholesale



Pettah - Retail



Dambulla - Retail



Wholesale and Retail Prices of Selected Food Commodities

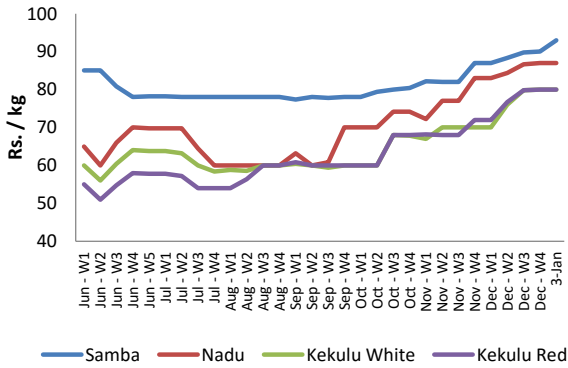


Rice

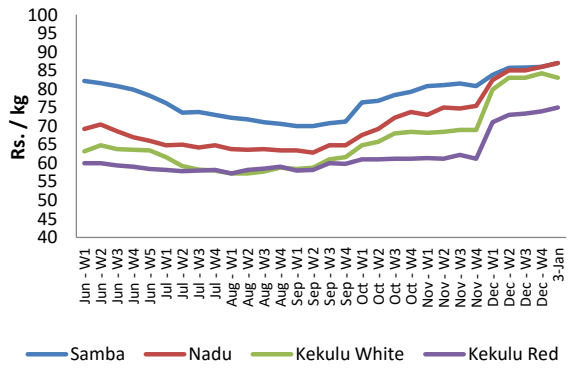
| Item | Unit | Pettah | | | | Marandagahamula | |
|--------------|--------|-------------------------|-------|-------------------------|--------|-------------------------|-------|
| | | Wholesale | | Retail | | Wholesale | |
| | | Previous 5 Days Average | 3-Jan | Previous 5 Days Average | 3-Jan | Previous 5 Days Average | 3-Jan |
| Samba | Rs./Kg | 91.00 | 93.00 | 101.00 | 103.00 | 86.00 | 87.00 |
| Nadu | Rs./Kg | 87.00 | 87.00 | 95.00 | 95.00 | 86.00 | 87.00 |
| Kekulu White | Rs./Kg | 80.00 | 80.00 | 85.00 | 85.00 | 84.00 | 83.00 |
| Kekulu Red | Rs./Kg | 80.00 | 80.00 | 85.00 | 85.00 | 74.00 | 75.00 |

- Price increased by more than 5% compared to previous week average price.
- Price decreased by more than 5% compared to previous week average price.

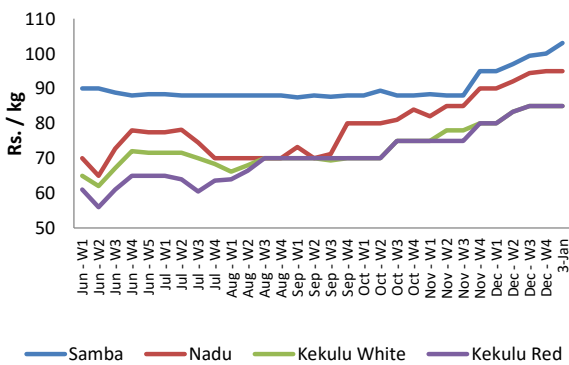
Pettah - Wholesale



Marandagahamula - Wholesale



Pettah - Retail



Wholesale and Retail Prices of Selected Food Commodities

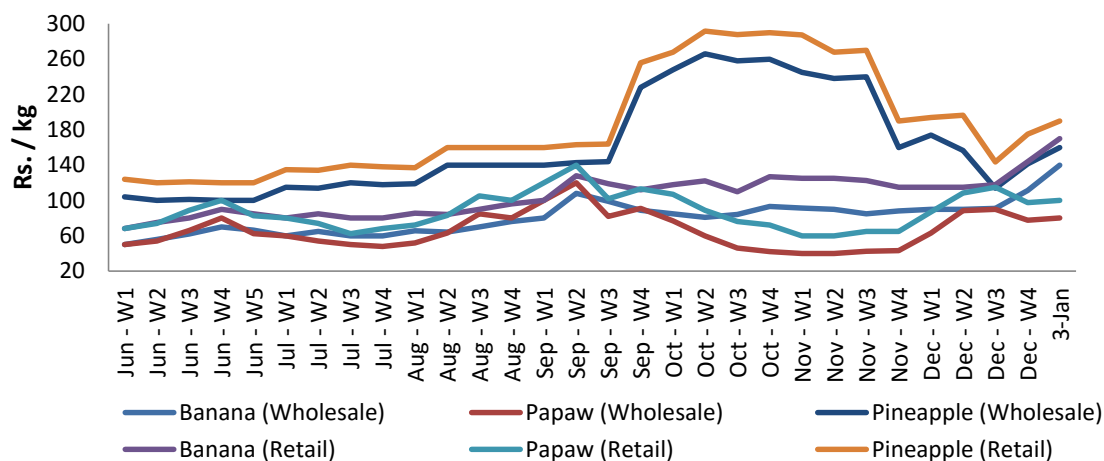


Fruits

| Item | Unit | Pettah | | | |
|---------------|--------|-------------------------|--------|-------------------------|--------|
| | | Wholesale | | Retail | |
| | | Previous 5 Days Average | 3-Jan | Previous 5 Days Average | 3-Jan |
| Banana (Sour) | Rs./Kg | 117.00 | 140.00 | 149.00 | 170.00 |
| Papaw | Rs./Kg | 78.00 | 80.00 | 98.00 | 100.00 |
| Pineapple | Rs./Kg | 145.00 | 160.00 | 178.00 | 190.00 |

- Price increased by more than 5% compared to previous week average price.
- Price decreased by more than 5% compared to previous week average price.

Pettah - Wholesale and Retail



Wholesale and Retail Prices of Selected Food Commodities



Other

| Item | Unit | Pettah | | | | Dambulla | | | |
|----------------------|----------|-------------------------|--------|-------------------------|--------|-------------------------|--------|-------------------------|--------|
| | | Wholesale | | Retail | | Wholesale | | Retail | |
| | | Previous 5 Days Average | 3-Jan | Previous 5 Days Average | 3-Jan | Previous 5 Days Average | 3-Jan | Previous 5 Days Average | 3-Jan |
| Red-Onions (local) | Rs./Kg | n.a. | n.a. | n.a. | n.a. | 75.00 | n.a. | 113.00 | n.a. |
| Red-Onions (Imp) | Rs./Kg | 110.00 | 80.00 | 134.00 | 115.00 | 80.00 | 85.00 | 114.00 | 120.00 |
| Big-Onions (local) | Rs./Kg | n.a. | n.a. | n.a. | n.a. | 80.00 | 63.00 | 95.00 | 78.00 |
| Big-Onions (Imp) | Rs./Kg | 76.00 | 65.00 | 95.00 | 95.00 | 74.00 | 64.00 | 92.00 | 88.00 |
| Potatoes (local) | Rs./Kg | 134.00 | 145.00 | 157.00 | 175.00 | 147.00 | 148.00 | 167.00 | 170.00 |
| Potatoes (Imp) | Rs./Kg | 80.00 | 80.00 | 97.00 | 100.00 | | | | |
| Dried Chillies (Imp) | Rs./Kg | 252.00 | 260.00 | 288.00 | 280.00 | 243.00 | 243.00 | 305.00 | 305.00 |
| Coconut | Rs./Nut | 43.00 | 43.00 | 55.00 | 55.00 | 41.00 | 43.00 | 51.00 | 53.00 |
| Coconut oil | Rs./Ltr | 258.00 | 250.00 | 282.00 | 290.00 | | | | |
| Dhal | Rs./Kg | 160.00 | 160.00 | 169.00 | 169.00 | | | | |
| Sugar | Rs./Kg | 91.00 | 93.00 | 96.00 | 98.00 | | | | |
| Eggs | Rs./Each | 12.00 | 12.00 | 13.00 | 13.00 | | | | |
| Katta | Rs./Kg | 900.00 | 900.00 | 950.00 | 950.00 | | | | |
| Sprats | Rs./Kg | 500.00 | 500.00 | 550.00 | 550.00 | | | | |

- Price increased by more than 5% compared to previous week average price.
- Price decreased by more than 5% compared to previous week average price.

