

Wholesale and Retail Prices of Selected Food Commodities

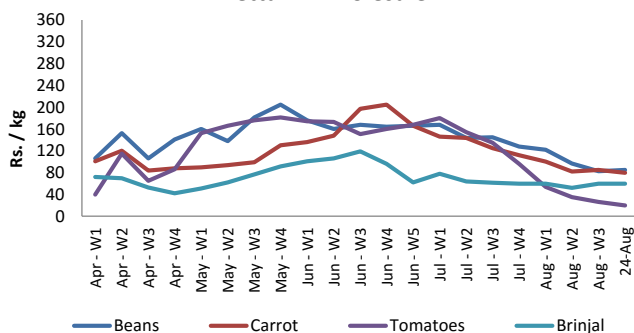


Vegetables

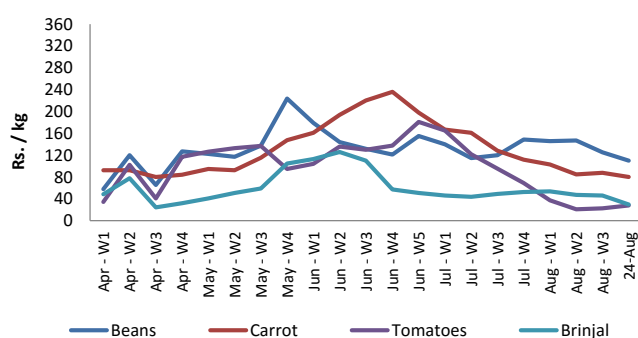
| Item | Unit | Pettah | | | | Dambulla | | | |
|-------------|--------|-------------------------|--------|-------------------------|--------|-------------------------|--------|-------------------------|--------|
| | | Wholesale | | Retail | | Wholesale | | Retail | |
| | | Previous 5 Days Average | 24-Aug | Previous 5 Days Average | 24-Aug | Previous 5 Days Average | 24-Aug | Previous 5 Days Average | 24-Aug |
| Beans | Rs./Kg | 84.00 | 85.00 | 104.00 | 105.00 | 123.00 | 110.00 | 169.00 | 165.00 |
| Carrot | Rs./Kg | 84.00 | 80.00 | 104.00 | 100.00 | 84.00 | 80.00 | 129.00 | 120.00 |
| Cabbage | Rs./Kg | 69.00 | 60.00 | 89.00 | 80.00 | 74.00 | 60.00 | 116.00 | 90.00 |
| Tomatoes | Rs./Kg | 26.00 | 20.00 | 50.00 | 50.00 | 23.00 | 28.00 | 49.00 | 50.00 |
| Brinjal | Rs./Kg | 60.00 | 60.00 | 80.00 | 80.00 | 45.00 | 30.00 | 61.00 | 55.00 |
| Pumpkin | Rs./Kg | 40.00 | 40.00 | 60.00 | 60.00 | 40.00 | 35.00 | 59.00 | 55.00 |
| Snake gourd | Rs./Kg | 33.00 | 30.00 | 53.00 | 50.00 | 18.00 | 20.00 | 40.00 | 50.00 |

- Price increased by more than 5% compared to previous week average price.
- Price decreased by more than 5% compared to previous week average price.

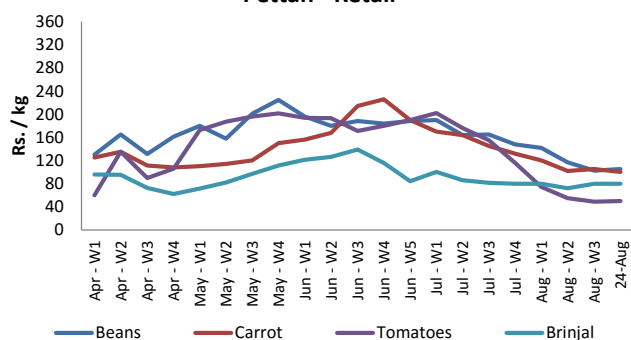
Pettah - Wholesale



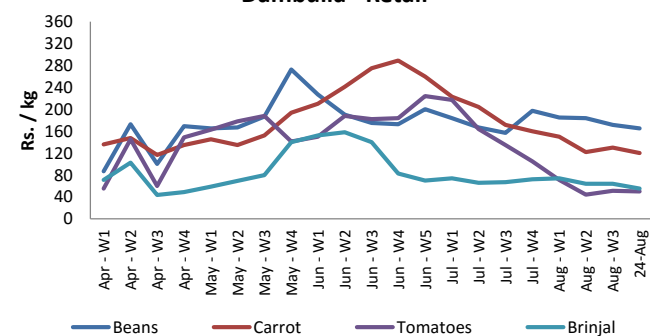
Dambulla - Wholesale



Pettah - Retail



Dambulla - Retail



Wholesale and Retail Prices of Selected Food Commodities

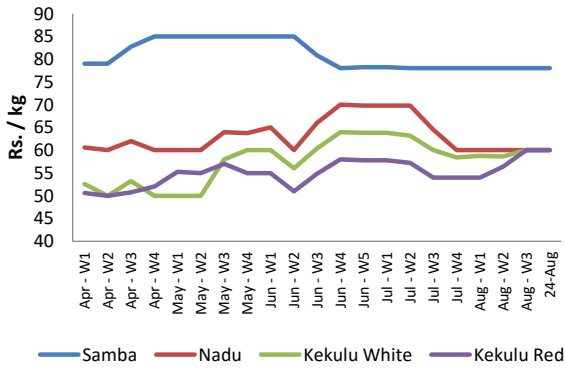


Rice

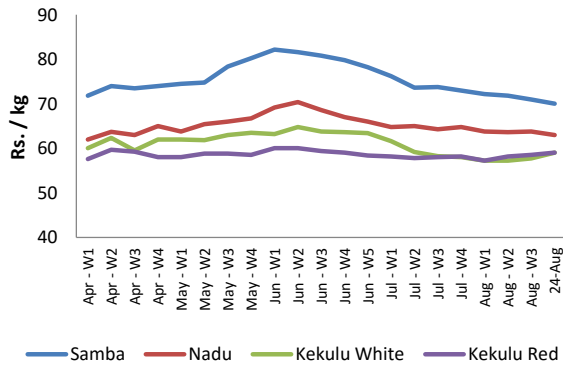
| Item | Unit | Pettah | | | | Marandaghamula | |
|--------------|--------|-------------------------|--------|-------------------------|--------|-------------------------|--------|
| | | Wholesale | | Retail | | Wholesale | |
| | | Previous 5 Days Average | 24-Aug | Previous 5 Days Average | 24-Aug | Previous 5 Days Average | 24-Aug |
| Samba | Rs./Kg | 78.00 | 78.00 | 88.00 | 88.00 | 71.00 | 70.00 |
| Nadu | Rs./Kg | 60.00 | 60.00 | 70.00 | 70.00 | 64.00 | 63.00 |
| Kekulu White | Rs./Kg | 60.00 | 60.00 | 70.00 | 70.00 | 58.00 | 59.00 |
| Kekulu Red | Rs./Kg | 60.00 | 60.00 | 70.00 | 70.00 | 59.00 | 59.00 |

- Price increased by more than 5% compared to previous week average price.
- Price decreased by more than 5% compared to previous week average price.

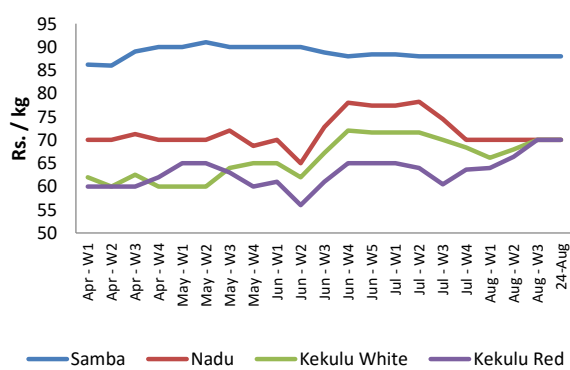
Pettah - Wholesale



Marandaghamula - Wholesale



Pettah - Retail



Wholesale and Retail Prices of Selected Food Commodities

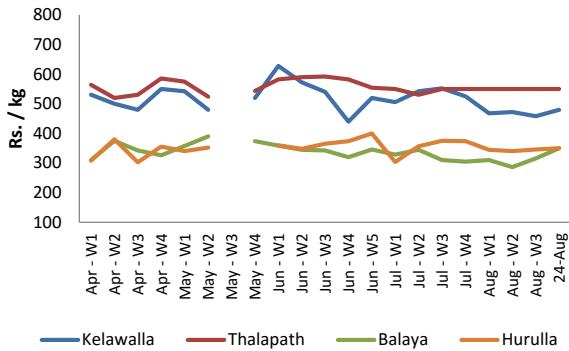


Fish

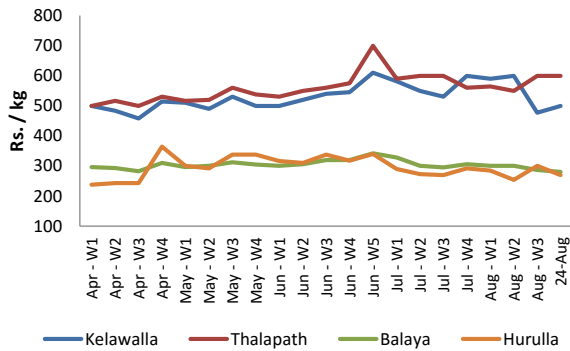
| Item | Unit | Peliyagoda Fish Market | | | | Negombo Fish Market | | | |
|-----------|--------|-------------------------|--------|-------------------------|--------|-------------------------|--------|-------------------------|--------|
| | | Wholesale | | Retail | | Wholesale | | Retail | |
| | | Previous 5 Days Average | 24-Aug | Previous 5 Days Average | 24-Aug | Previous 5 Days Average | 24-Aug | Previous 5 Days Average | 24-Aug |
| Kelawalla | Rs./Kg | 458.00 | 480.00 | 614.00 | 580.00 | 478.00 | 500.00 | 656.00 | 650.00 |
| Thalapath | Rs./Kg | 552.00 | 550.00 | 687.00 | 660.00 | 600.00 | 600.00 | 770.00 | 750.00 |
| Balaya | Rs./Kg | 316.00 | 350.00 | 416.00 | 450.00 | 284.00 | 280.00 | 404.00 | 400.00 |
| Paraw | Rs./Kg | 570.00 | 550.00 | 778.00 | 780.00 | 494.00 | 470.00 | 680.00 | 600.00 |
| Salaya | Rs./Kg | 166.00 | 150.00 | 228.00 | 230.00 | 92.00 | 100.00 | 142.00 | 150.00 |
| Hurulla | Rs./Kg | 322.00 | 350.00 | 406.00 | 450.00 | 290.00 | 270.00 | 360.00 | 350.00 |

- Price increased by more than 5% compared to previous week average price.
- Price decreased by more than 5% compared to previous week average price.

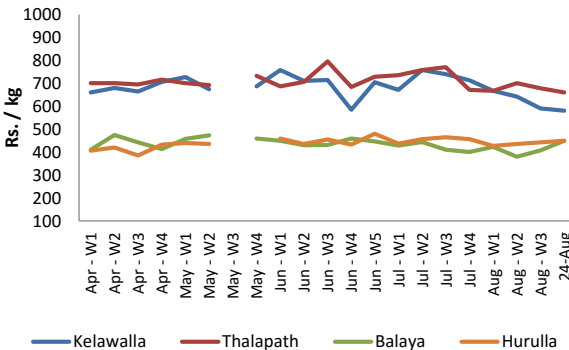
Peliyagoda - Wholesale



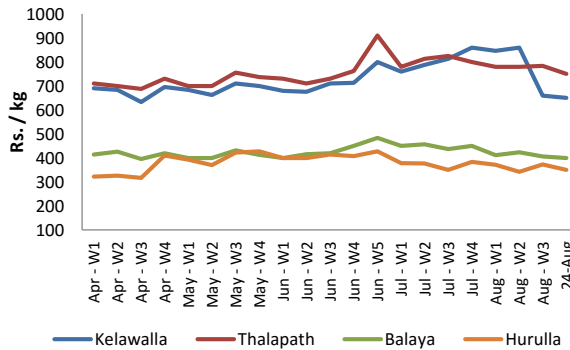
Negombo - Wholesale



Peliyagoda - Retail



Negombo - Retail



Wholesale and Retail Prices of Selected Food Commodities

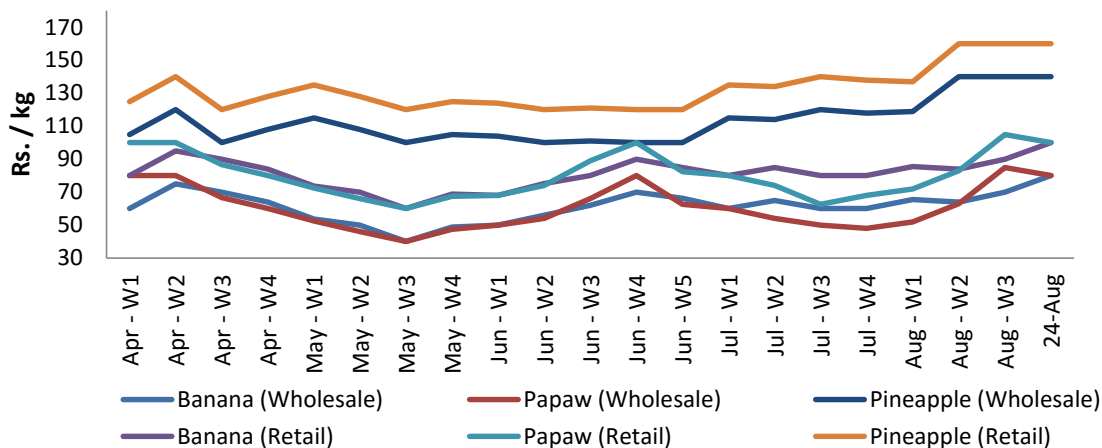


Fruits

| Item | Unit | Pettah | | | |
|---------------|--------|-------------------------|--------|-------------------------|--------|
| | | Wholesale | | Retail | |
| | | Previous 5 Days Average | 24-Aug | Previous 5 Days Average | 24-Aug |
| Banana (Sour) | Rs./Kg | 72.00 | 80.00 | 92.00 | 100.00 |
| Papaw | Rs./Kg | 84.00 | 80.00 | 104.00 | 100.00 |
| Pineapple | Rs./Kg | 140.00 | 140.00 | 160.00 | 160.00 |

- Price increased by more than 5% compared to previous week average price.
- Price decreased by more than 5% compared to previous week average price.

Pettah - Wholesale and Retail



Wholesale and Retail Prices of Selected Food Commodities



Other

| Item | Unit | Pettah | | | | Dambulla | | | |
|----------------------|----------|-------------------------|--------|-------------------------|--------|-------------------------|--------|-------------------------|--------|
| | | Wholesale | | Retail | | Wholesale | | Retail | |
| | | Previous 5 Days Average | 24-Aug | Previous 5 Days Average | 24-Aug | Previous 5 Days Average | 24-Aug | Previous 5 Days Average | 24-Aug |
| Red-Onions (local) | Rs./Kg | 80.00 | 80.00 | 100.00 | 100.00 | 57.00 | 70.00 | 87.00 | 90.00 |
| Red-Onions (Imp) | Rs./Kg | 60.00 | 60.00 | 80.00 | 80.00 | 55.00 | 65.00 | 83.00 | 90.00 |
| Big-Onions (local) | Rs./Kg | n.a. | n.a. | n.a. | n.a. | 63.00 | 75.00 | 81.20 | 90.00 |
| Big-Onions (Imp) | Rs./Kg | 58.00 | 78.00 | 75.00 | 88.00 | 62.00 | 75.00 | 80.00 | 90.00 |
| Potatoes (local) | Rs./Kg | 148.00 | 140.00 | 168.00 | 160.00 | 127.00 | 105.00 | 150.00 | 130.00 |
| Potatoes (Imp) | Rs./Kg | 80.00 | 80.00 | 100.00 | 100.00 | | | | |
| Dried Chillies (Imp) | Rs./Kg | 330.00 | 330.00 | 370.00 | 370.00 | 303.00 | 303.00 | 360.00 | 360.00 |
| Coconut | Rs./Nut | 33.00 | 33.00 | 38.00 | 38.00 | 27.00 | 27.00 | 36.00 | 35.00 |
| Coconut oil | Rs./Ltr | 230.00 | 230.00 | 260.00 | 260.00 | | | | |
| Dhal | Rs./Kg | 160.00 | 160.00 | 160.00 | 169.00 | | | | |
| Sugar | Rs./Kg | 90.00 | 90.00 | 100.00 | 100.00 | | | | |
| Eggs | Rs./Each | 15.98 | 15.20 | 16.48 | 15.70 | | | | |
| Katta | Rs./Kg | 880.00 | 880.00 | 920.00 | 920.00 | | | | |
| Sprats | Rs./Kg | 460.00 | 460.00 | 480.00 | 480.00 | | | | |

- Price increased by more than 5% compared to previous week average price.
- Price decreased by more than 5% compared to previous week average price.

