

Wholesale and Retail Prices of Selected Food Commodities

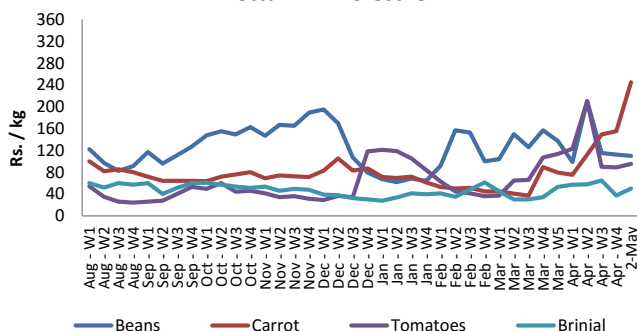


Vegetables

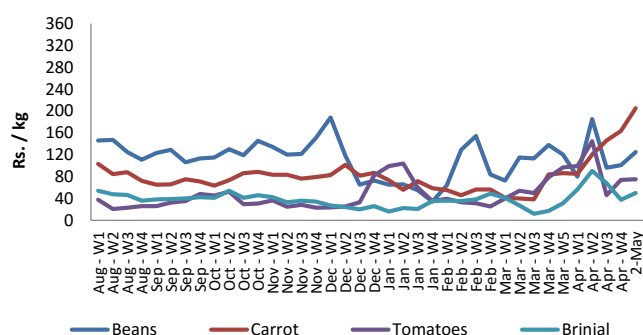
| Item | Unit | Pettah | | | | Dambulla | | | |
|-------------|--------|-------------------------|--------|-------------------------|--------|-------------------------|--------|-------------------------|--------|
| | | Wholesale | | Retail | | Wholesale | | Retail | |
| | | Previous 5 Days Average | 2-May | Previous 5 Days Average | 2-May | Previous 5 Days Average | 2-May | Previous 5 Days Average | 2-May |
| Beans | Rs./Kg | 112.00 | 110.00 | 145.00 | 150.00 | 101.00 | 125.00 | 122.00 | 145.00 |
| Carrot | Rs./Kg | 155.00 | 245.00 | 195.00 | 290.00 | 164.00 | 205.00 | 185.00 | 225.00 |
| Cabbage | Rs./Kg | 123.00 | 135.00 | 174.00 | 180.00 | 90.00 | 95.00 | 110.00 | 115.00 |
| Tomatoes | Rs./Kg | 89.00 | 95.00 | 123.00 | 130.00 | 74.00 | 75.00 | 94.00 | 95.00 |
| Brinjal | Rs./Kg | 37.00 | 50.00 | 68.00 | 80.00 | 38.00 | 50.00 | 58.00 | 70.00 |
| Pumpkin | Rs./Kg | 46.00 | 45.00 | 75.00 | 70.00 | 48.00 | 55.00 | 68.00 | 75.00 |
| Snake gourd | Rs./Kg | 89.00 | 110.00 | 117.00 | 135.00 | 61.00 | 60.00 | 81.00 | 80.00 |

- Price increased by more than 5% compared to previous week average price.
- Price decreased by more than 5% compared to previous week average price.

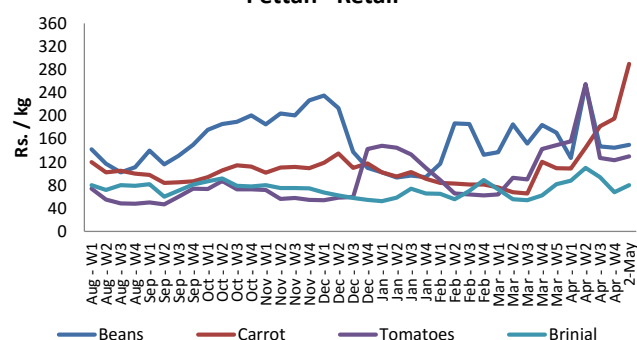
Pettah - Wholesale



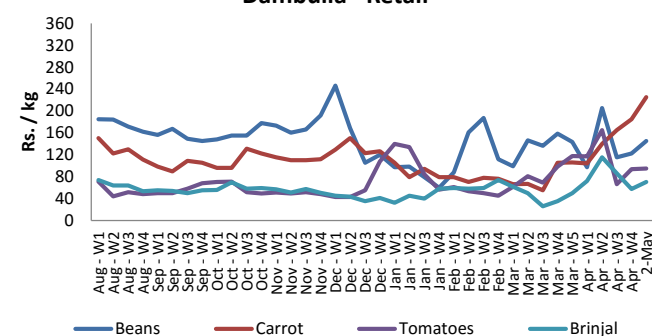
Dambulla - Wholesale



Pettah - Retail



Dambulla - Retail



Wholesale and Retail Prices of Selected Food Commodities

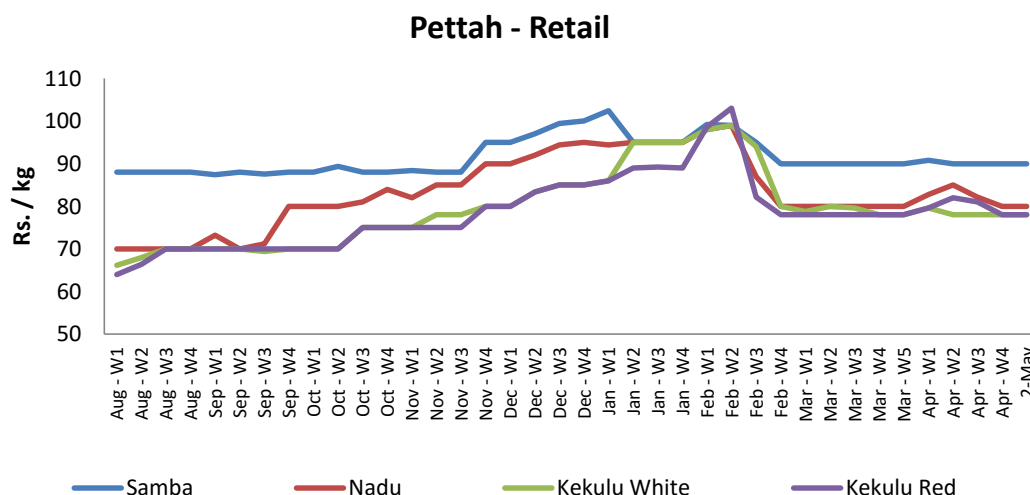
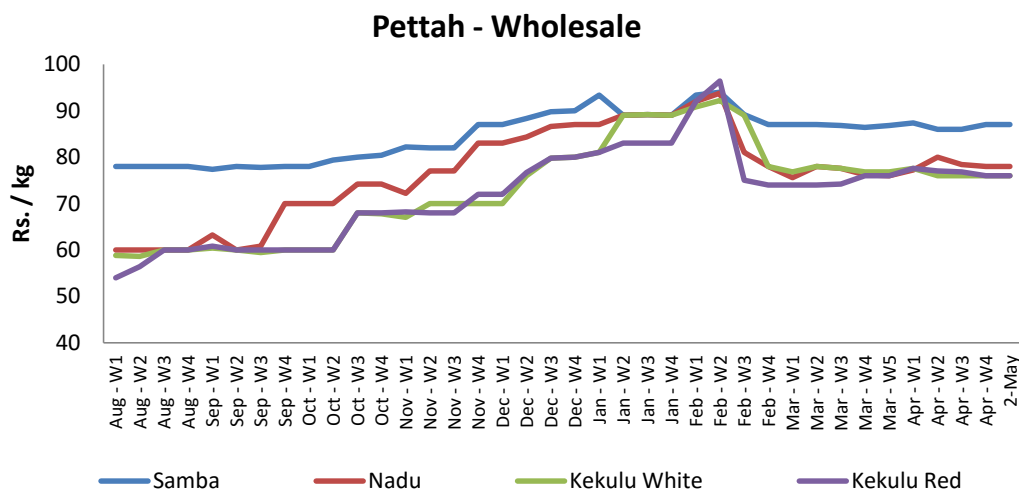


Rice

| Item | Unit | Pettah | | | |
|--------------|--------|-------------------------|-------|-------------------------|-------|
| | | Wholesale | | Retail | |
| | | Previous 5 Days Average | 2-May | Previous 5 Days Average | 2-May |
| Samba | Rs./Kg | 87.00 | 87.00 | 90.00 | 90.00 |
| Nadu | Rs./Kg | 78.00 | 78.00 | 80.00 | 80.00 |
| Kekulu White | Rs./Kg | 76.00 | 76.00 | 78.00 | 78.00 |
| Kekulu Red | Rs./Kg | 76.00 | 76.00 | 78.00 | 78.00 |

■ Price increased by more than 5% compared to previous week average price.

■ Price decreased by more than 5% compared to previous week average price.



Wholesale and Retail Prices of Selected Food Commodities

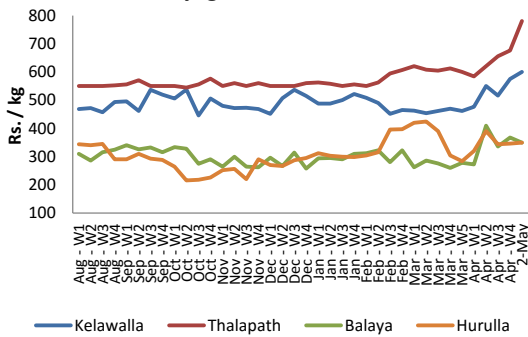


Fish

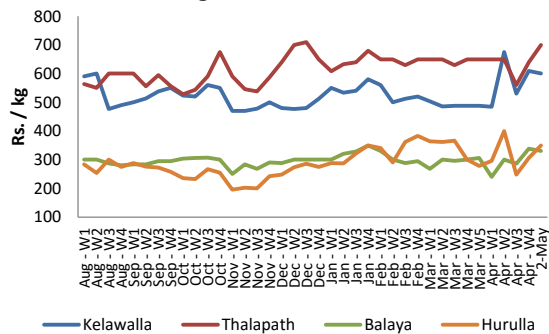
| Item | Unit | Peliyagoda Fish Market | | | | Negombo Fish Market | | | |
|-----------|--------|-------------------------|--------|-------------------------|---------|-------------------------|--------|-------------------------|--------|
| | | Wholesale | | Retail | | Wholesale | | Retail | |
| | | Previous 5 Days Average | 2-May | Previous 5 Days Average | 2-May | Previous 5 Days Average | 2-May | Previous 5 Days Average | 2-May |
| Kelawalla | Rs./Kg | 575.00 | 600.00 | 835.00 | 900.00 | 610.00 | 600.00 | 756.00 | 750.00 |
| Thalapath | Rs./Kg | 676.00 | 780.00 | 856.00 | 1000.00 | 640.00 | 700.00 | 790.00 | 800.00 |
| Balaya | Rs./Kg | 368.00 | 350.00 | 468.00 | 450.00 | 338.00 | 330.00 | 460.00 | 450.00 |
| Paraw | Rs./Kg | 640.00 | 570.00 | 732.00 | 780.00 | 500.00 | 500.00 | 650.00 | 650.00 |
| Salaya | Rs./Kg | 126.00 | 130.00 | 180.00 | 180.00 | 120.00 | 140.00 | 168.00 | 200.00 |
| Hurulla | Rs./Kg | 346.00 | 350.00 | 440.00 | 450.00 | 306.00 | 350.00 | 384.00 | 450.00 |

- Price increased by more than 5% compared to previous week average price.
- Price decreased by more than 5% compared to previous week average price.

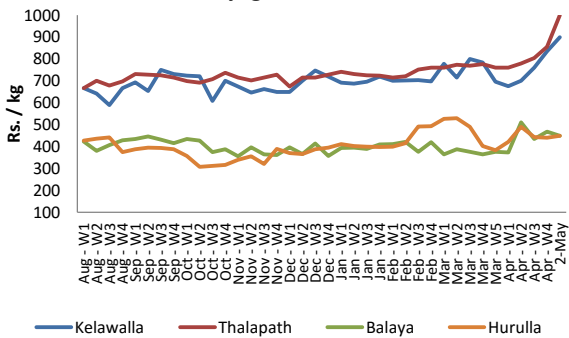
Peliyagoda - Wholesale



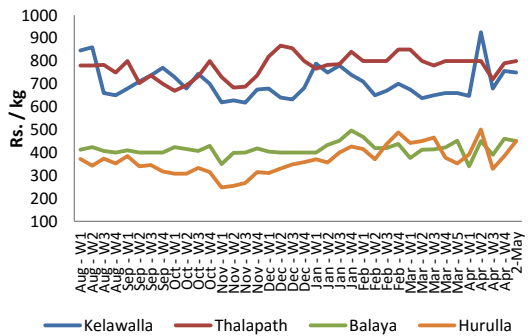
Negombo - Wholesale



Peliyagoda - Retail



Negombo - Retail



Wholesale and Retail Prices of Selected Food Commodities

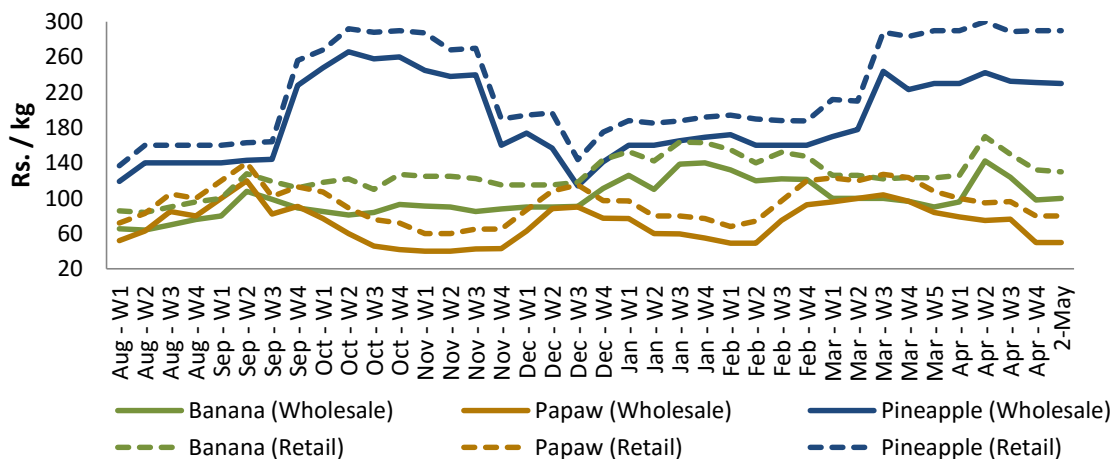


Fruits

| Item | Unit | Pettah | | | |
|---------------|--------|-------------------------|--------|-------------------------|--------|
| | | Wholesale | | Retail | |
| | | Previous 5 Days Average | 2-May | Previous 5 Days Average | 2-May |
| Banana (Sour) | Rs./Kg | 98.00 | 100.00 | 132.00 | 130.00 |
| Papaw | Rs./Kg | 50.00 | 50.00 | 80.00 | 80.00 |
| Pineapple | Rs./Kg | 231.00 | 230.00 | 290.00 | 290.00 |

- Price increased by more than 5% compared to previous week average price.
- Price decreased by more than 5% compared to previous week average price.

Pettah - Wholesale and Retail



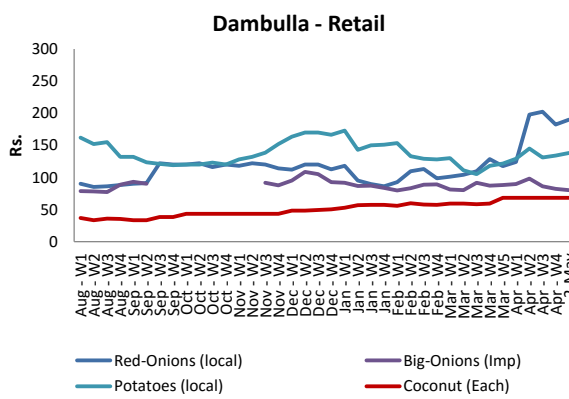
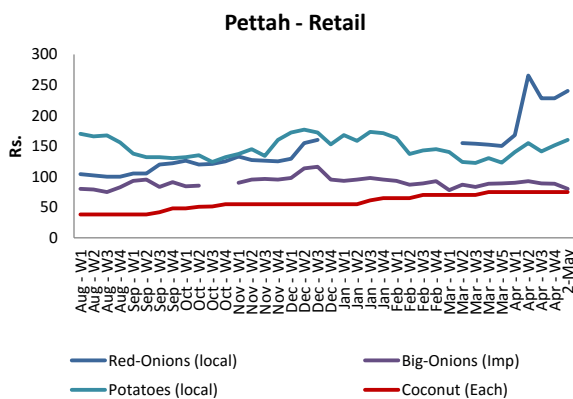
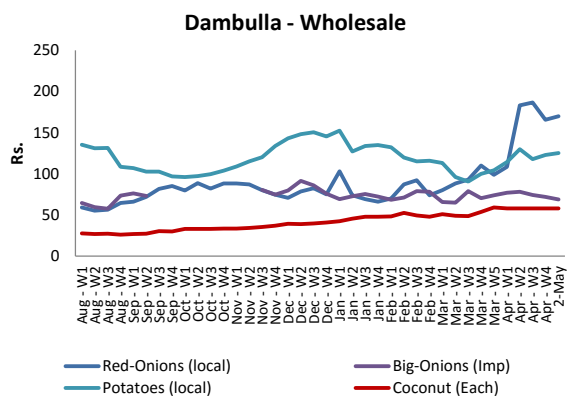
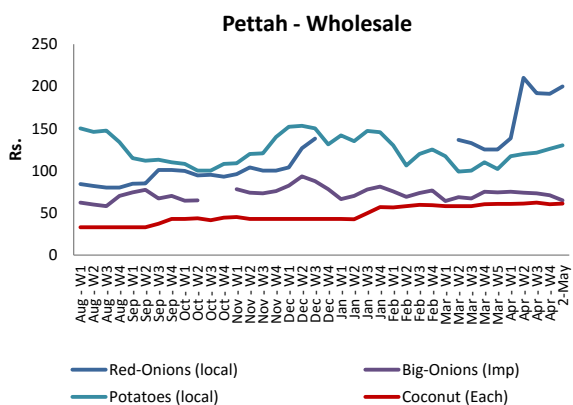
Wholesale and Retail Prices of Selected Food Commodities



Other

| Item | Unit | Pettah | | | | Dambulla | | | |
|----------------------|----------|-------------------------|--------|-------------------------|--------|-------------------------|--------|-------------------------|--------|
| | | Wholesale | | Retail | | Wholesale | | Retail | |
| | | Previous 5 Days Average | 2-May | Previous 5 Days Average | 2-May | Previous 5 Days Average | 2-May | Previous 5 Days Average | 2-May |
| Red-Onions (local) | Rs./Kg | 191.00 | 200.00 | 228.00 | 240.00 | 166.00 | 170.00 | 182.00 | 190.00 |
| Red-Onions (Imp) | Rs./Kg | 200.00 | 200.00 | 240.00 | 240.00 | 185.00 | n.a. | 202.00 | n.a. |
| Big-Onions (local) | Rs./Kg | n.a. | n.a. | n.a. | n.a. | n.a. | n.a. | n.a. | n.a. |
| Big-Onions (Imp) | Rs./Kg | 71.00 | 65.00 | 88.00 | 80.00 | 72.00 | 69.00 | 82.00 | 80.00 |
| Potatoes (local) | Rs./Kg | 126.00 | 130.00 | 151.00 | 160.00 | 123.00 | 125.00 | 134.00 | 138.00 |
| Potatoes (Imp) | Rs./Kg | 89.00 | 88.00 | 110.00 | 110.00 | | | | |
| Dried Chillies (Imp) | Rs./Kg | 166.00 | 165.00 | 221.00 | 220.00 | 175.00 | 155.00 | 190.00 | 168.00 |
| Coconut | Rs./Nut | 60.00 | 61.00 | 75.00 | 75.00 | 58.00 | 58.00 | 68.00 | 68.00 |
| Coconut oil | Rs./Ltr | 340.00 | 340.00 | 360.00 | 360.00 | | | | |
| Dhal | Rs./Kg | 137.00 | 135.00 | 156.00 | 155.00 | | | | |
| Sugar | Rs./Kg | 100.00 | 100.00 | 108.00 | 108.00 | | | | |
| Eggs | Rs./Each | 12.00 | 12.00 | 13.00 | 13.00 | | | | |
| Katta | Rs./Kg | 800.00 | 800.00 | 850.00 | 850.00 | | | | |
| Sprats | Rs./Kg | 451.00 | 450.00 | 502.00 | 500.00 | | | | |

- Price increased by more than 5% compared to previous week average price.
- Price decreased by more than 5% compared to previous week average price.



* Prices of food commodities may vary due to quality and markets among other factors.