

Sri Lanka: Macroeconomic Developments in Charts

Fourth Quarter 2021



Central Bank of Sri Lanka
Economic Research Department

Index

Real Sector and Inflation

[Real GDP Growth \(Annual /Quarterly\)](#)
[Sectoral GDP Growth](#)
[Per Capita GDP](#)
[Index of Industrial Production \(IIP\)](#)
[Unemployment](#)
[Poverty](#)
[CCPI based Inflation](#)
[NCPI based Inflation](#)
[Producer's Price Index \(PPI\)](#)

External Sector

[Earnings from Merchandise Exports](#)
[Expenditure from Merchandise Imports](#)
[Trade Balance](#)
[Tourism: Arrivals and Earnings](#)
[Tourism: Monthly Arrivals](#)
[Workers' Remittances](#)
[Current Account Balance](#)
[Foreign Direct Investment Flows](#)
[Balance of Payment](#)
[Gross Official Reserves](#)
[Exchange Rate Movements](#)

Fiscal Sector

[Government Revenue](#)
[Government Expenditure](#)
[Public Investment](#)
[Budget Deficit](#)
[Central Government Debt](#)

Monetary Sector

[Reserve Money Growth and Money Multiplier](#)
[Broad Money Growth](#)
[Credit to the Private Sector](#)
[Net Credit to Government](#)
[Credit to Public Corporations](#)
[Net Foreign Assets](#)
[Policy Interest Rates and Overnight Money Market Rates](#)
[Treasury Bill Yields and the Yield Curve](#)
[Market Interest Rates](#)

Financial Sector

[Banking Sector Indicators \(i\)](#)
[Banking Sector Indicators \(ii\)](#)
[Banking Density](#)
[Non-Bank Financial Sector Indicators \(i\)](#)
[Non-Bank Financial Sector Indicators \(ii\)](#)
[Stock Market Performance](#)

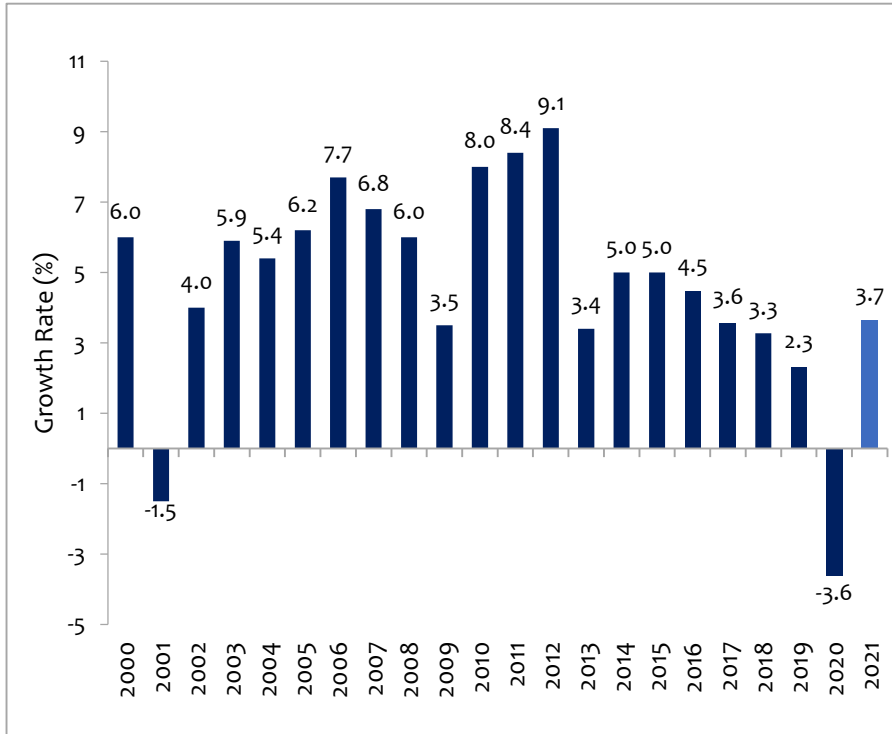


Real Sector and Inflation

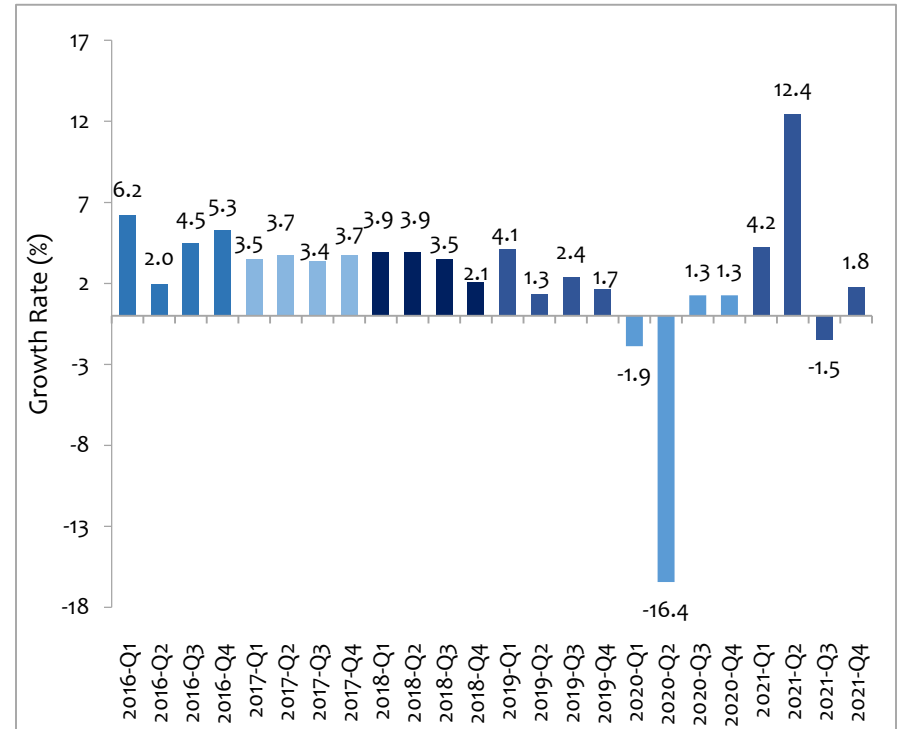


Real GDP Growth

Annual Real GDP Growth



Quarterly Real GDP Growth

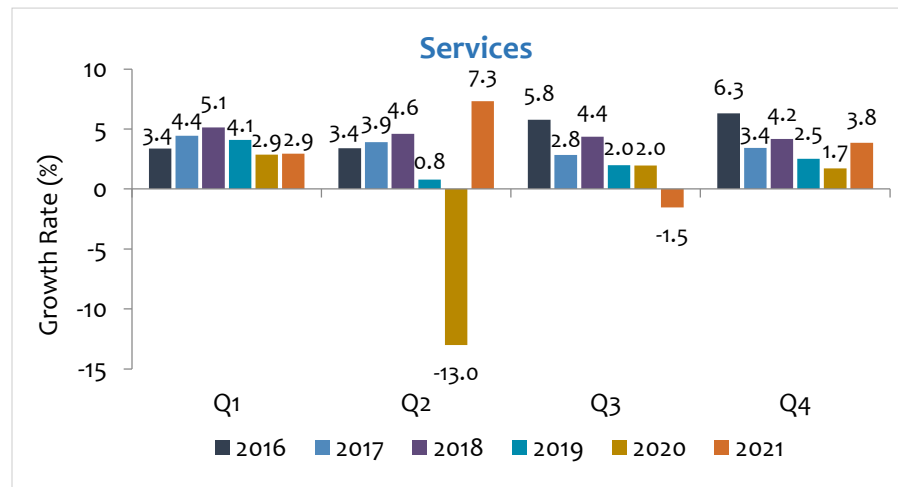
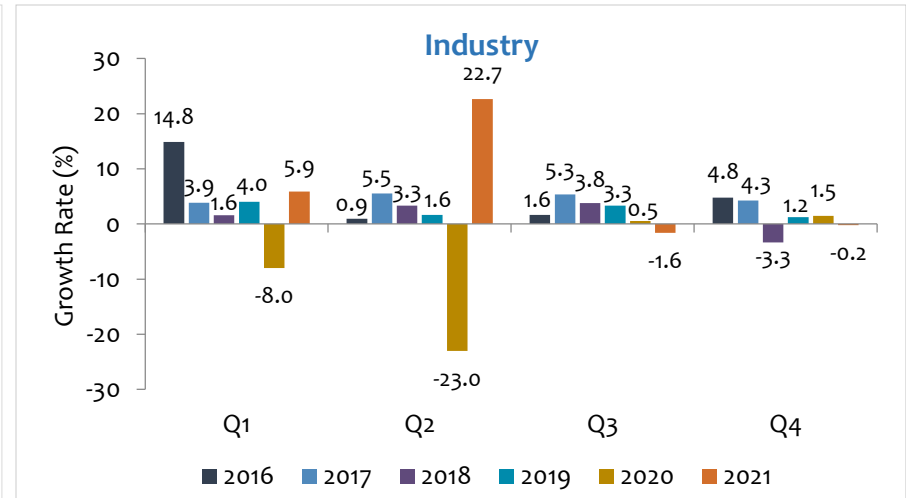
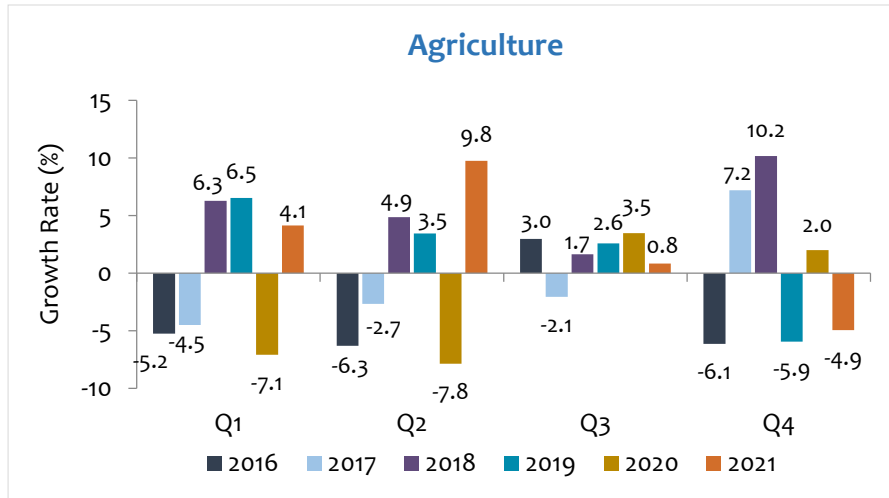


Source: Department of Census and Statistics

Note: Data from 2011 are based on the base year 2010 GDP estimates of the Department of Census and Statistics
 Data are based on latest GDP estimates made available on 29 March 2022 by the Department of Census and Statistics



Sectoral GDP Growth



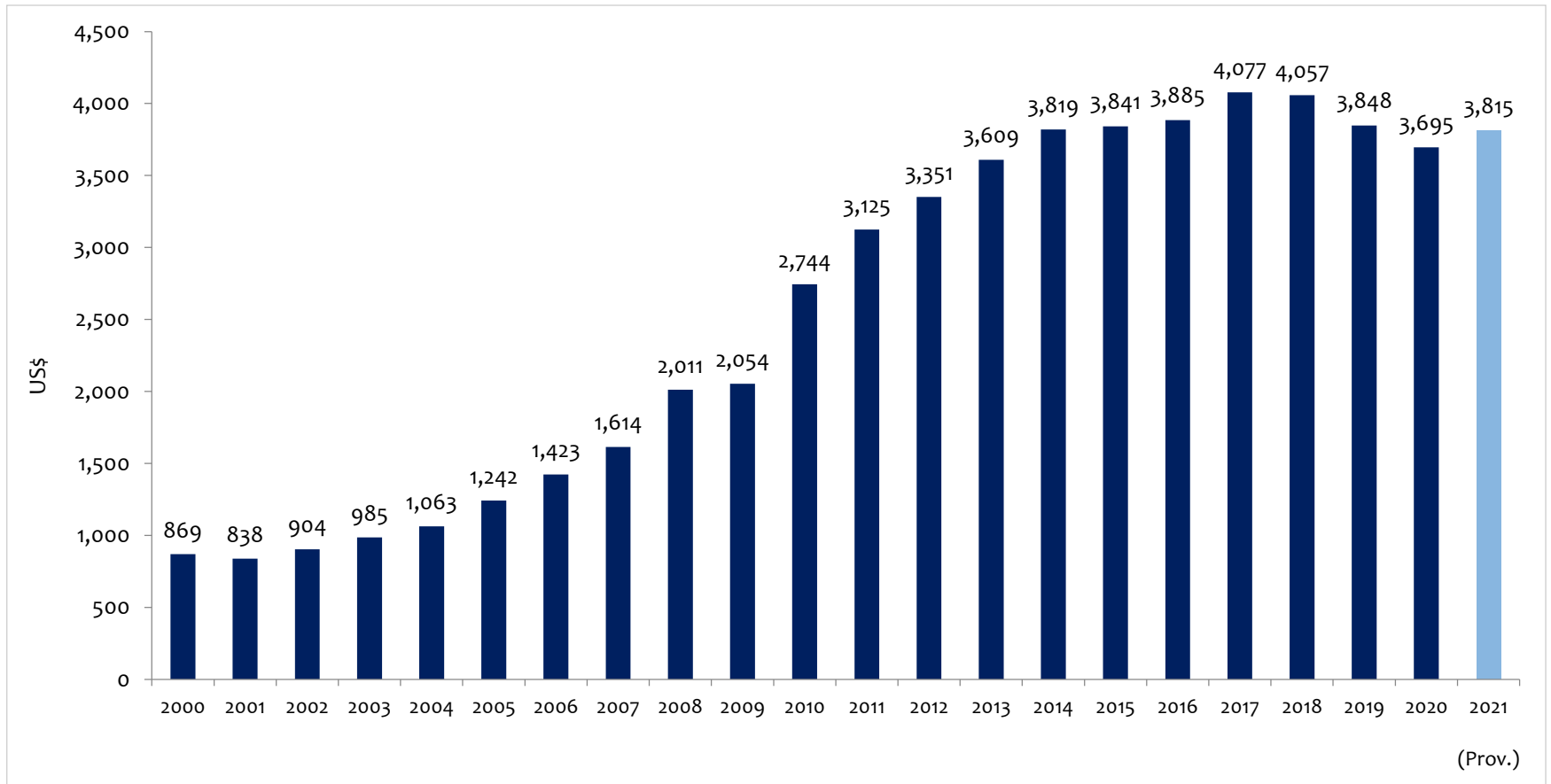
Source: Department of Census and Statistics

Note: Data are based on the base year 2010 GDP estimates of the Department of Census and Statistics

Data are based on latest GDP estimates made available 29 March 2022 by the Department of Census and Statistics



Per Capita GDP

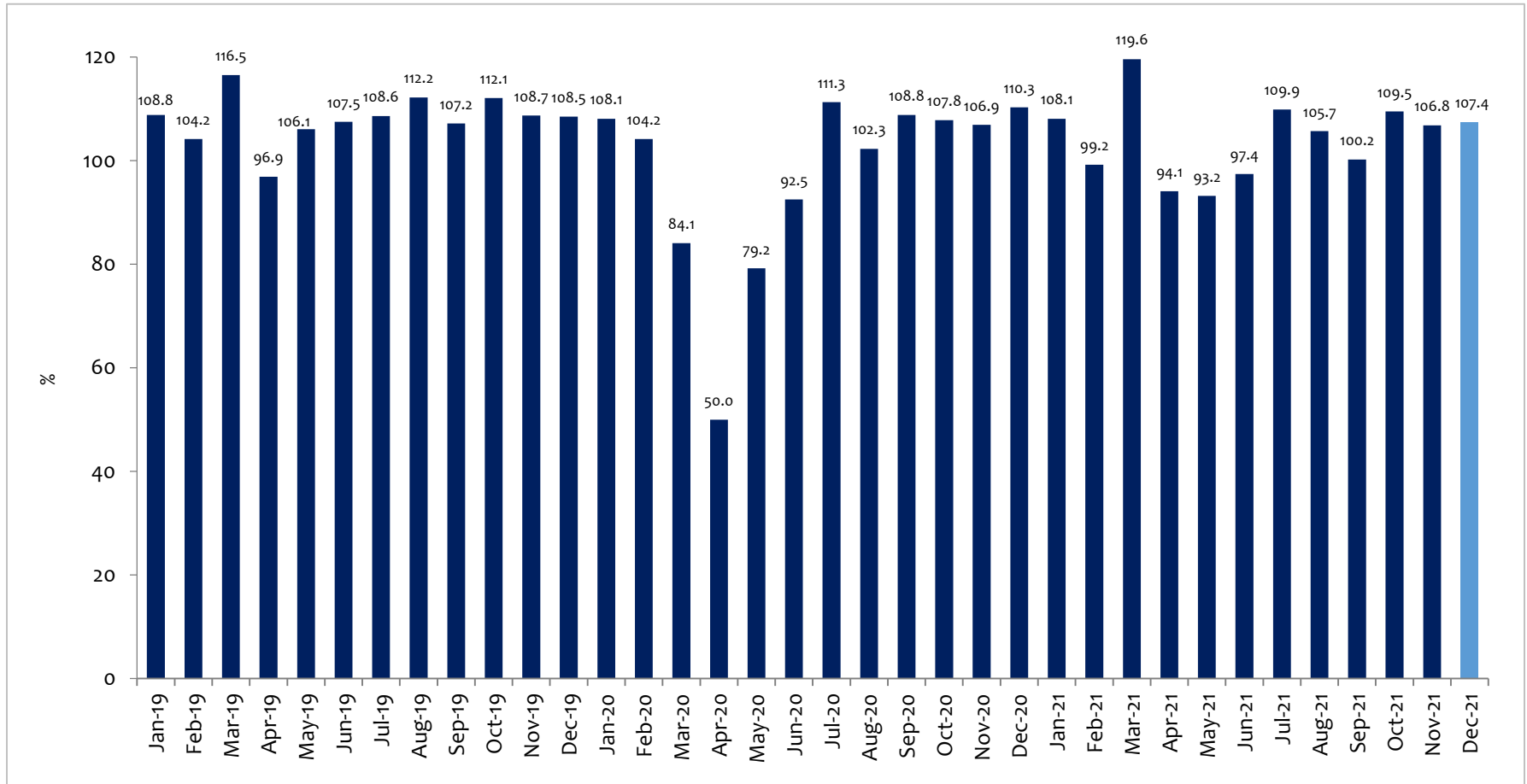


Sources: Department of Census and Statistics
Central Bank of Sri Lanka

Note: Data from 2011 are based on the base year 2010 GDP estimates of the Department of Census and Statistics and updated with latest population data
Data are based on latest GDP estimates made available on 29 March 2022 by the Department of Census and Statistics



Index of Industrial Production (IIP)*

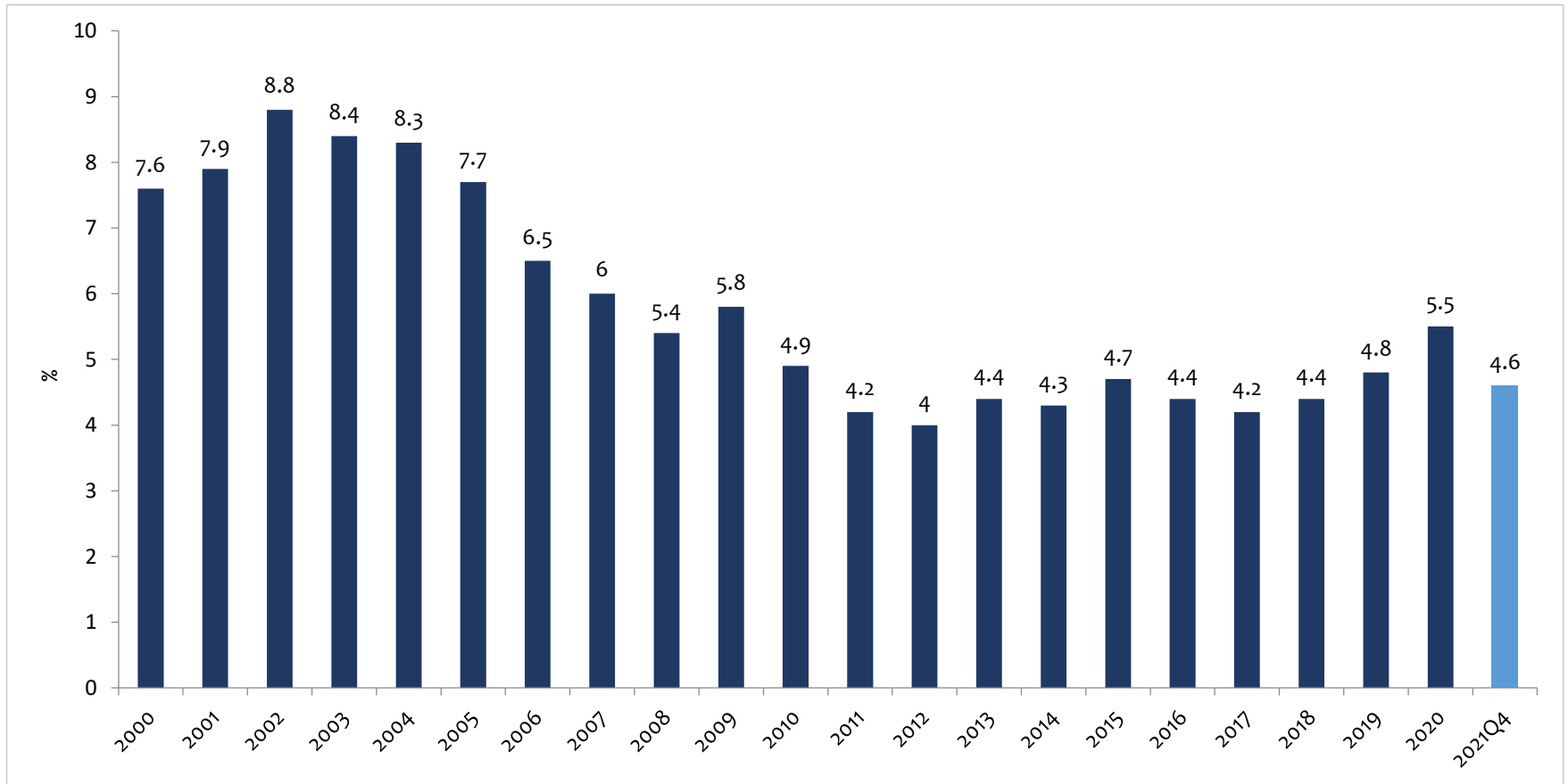


Source: Department of Census and Statistics

*Based on the Index of Industrial Production (IIP, 2015=100)



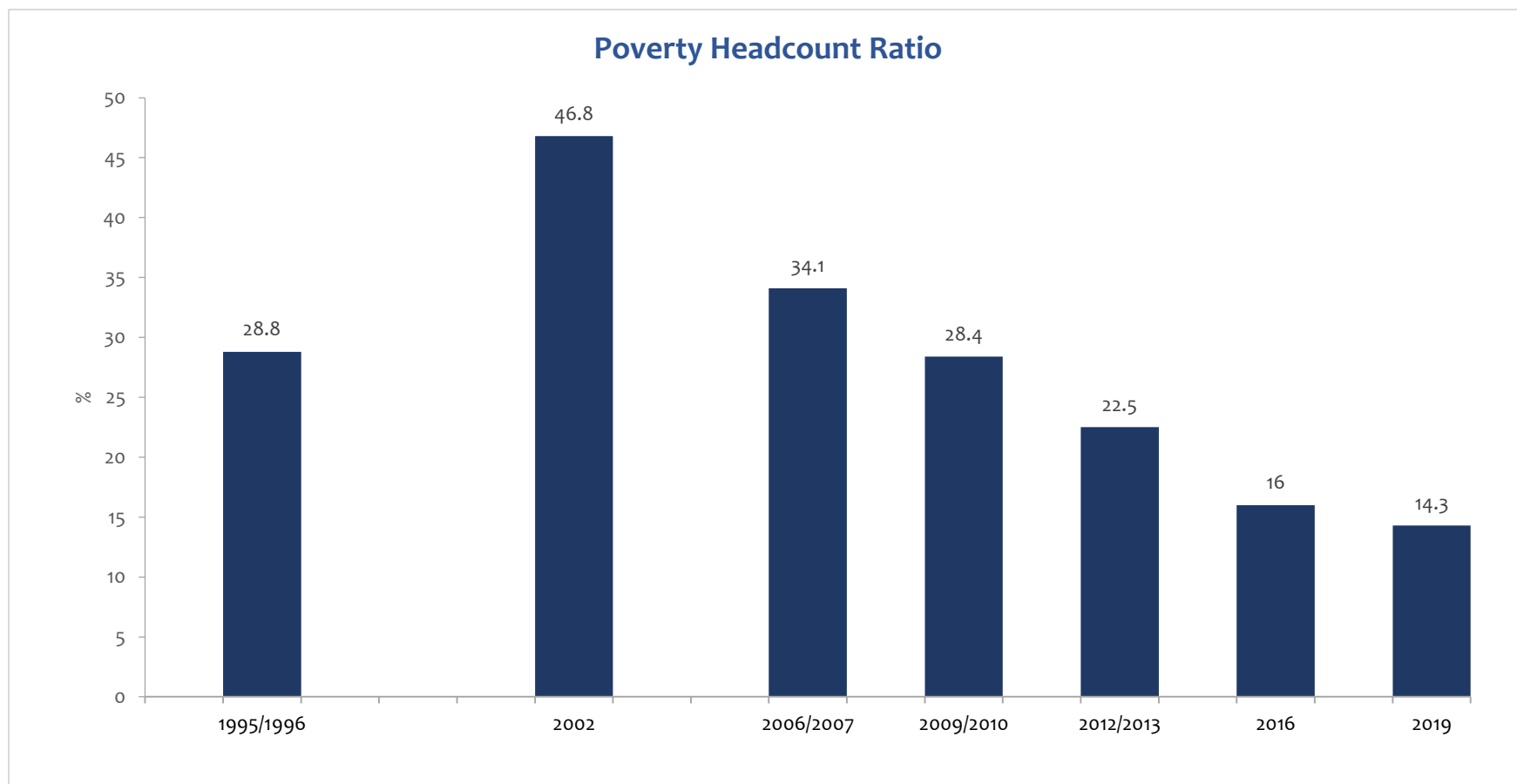
Unemployment



Source: Department of Census and Statistics



Poverty



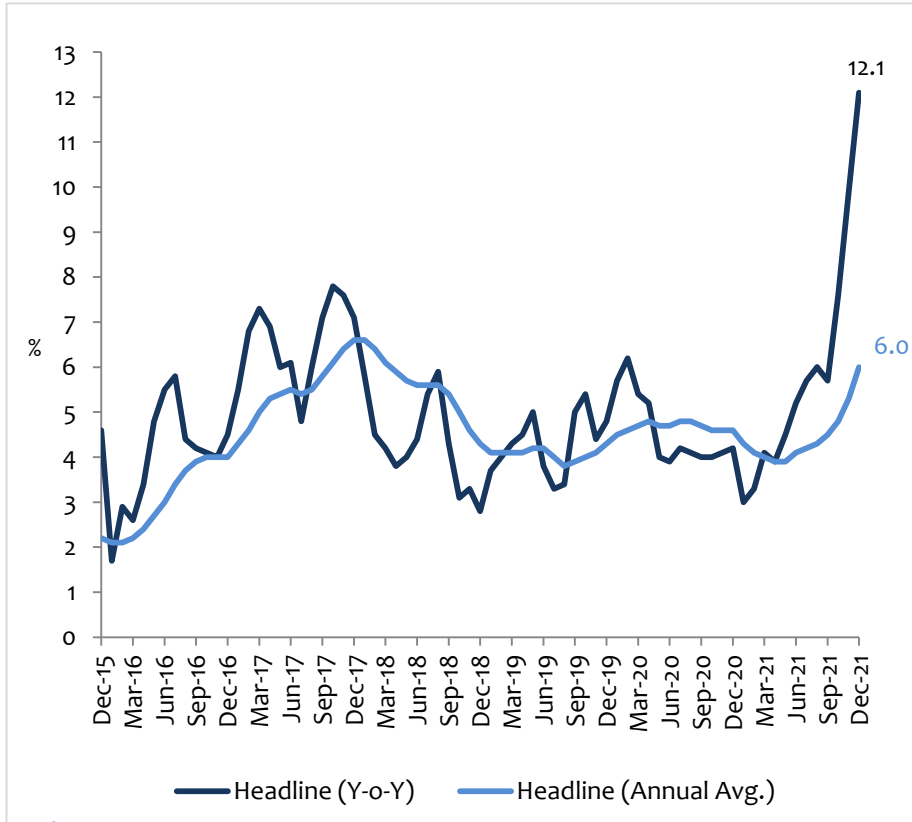
Note: Based on official poverty line using HIES 2012/13 data

Source: Department of Census and Statistics

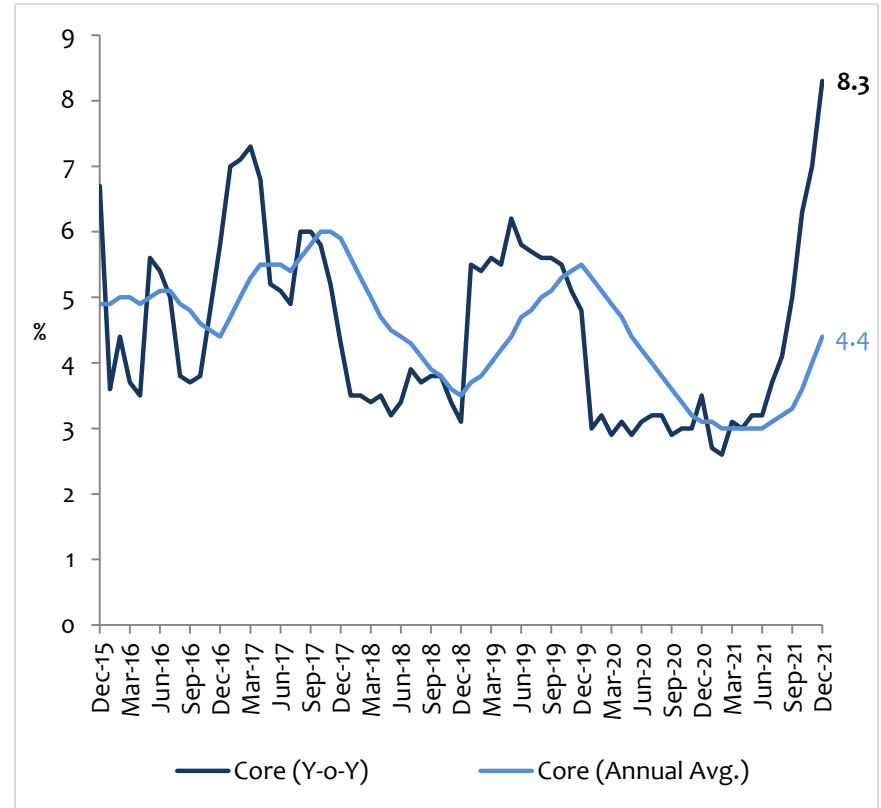


CCPI based Inflation*

CCPI based Headline Inflation



CCPI based Core Inflation**



Source: Department of Census and Statistics

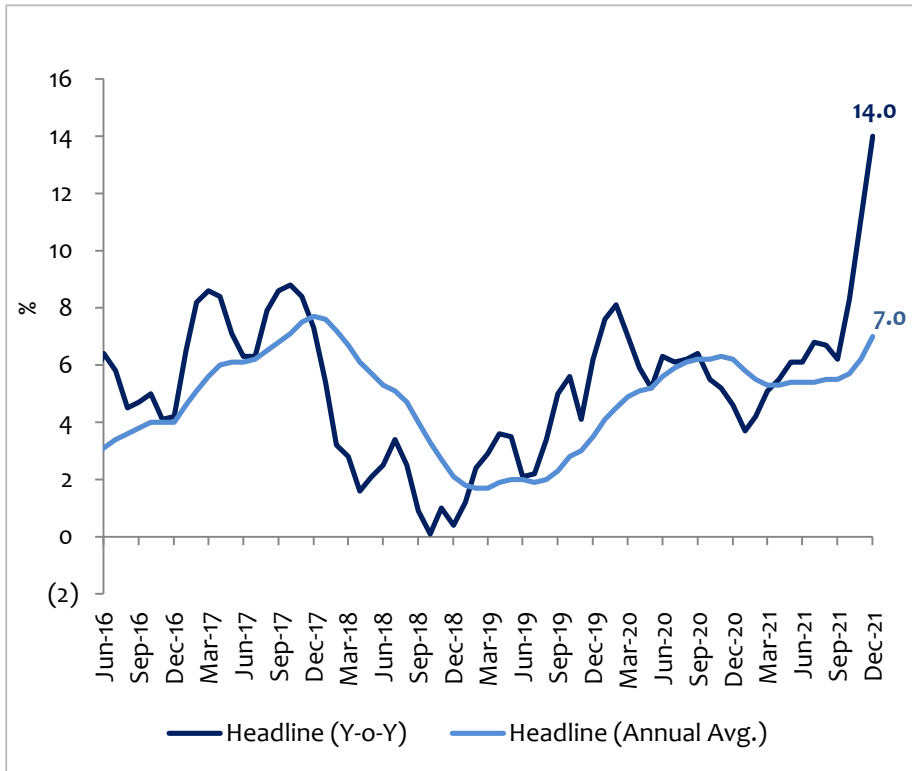
*Based on the Colombo Consumer Price Index (CCPI, 2013=100)

**Core Inflation is calculated by excluding volatile food, energy and transport categories from the CCPI

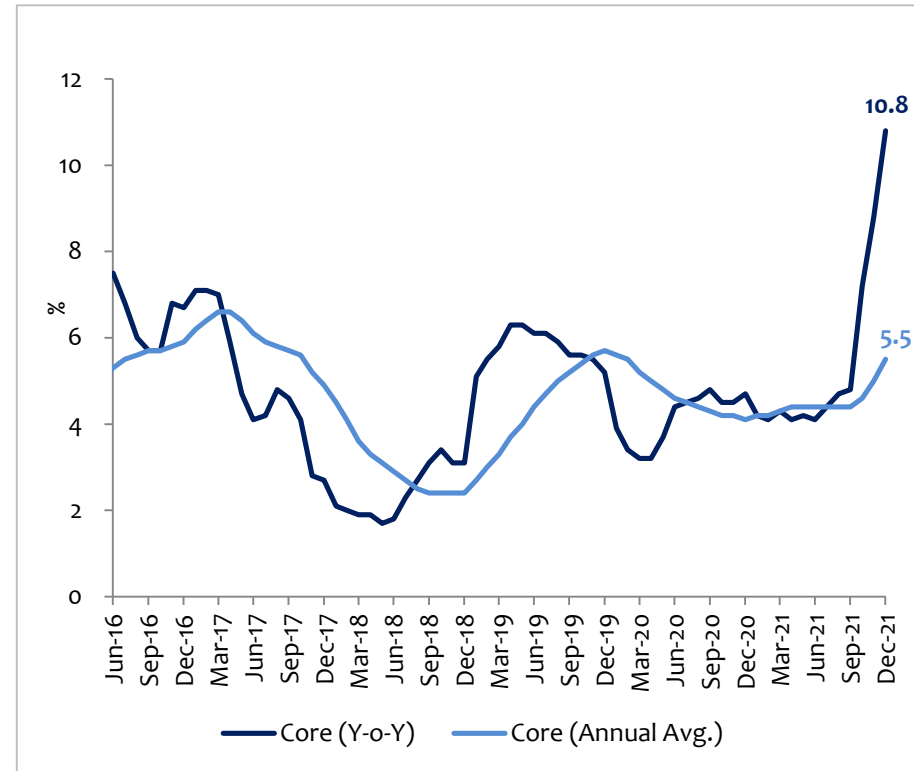


NCPI based Inflation*

NCPI based Headline Inflation



NCPI based Core Inflation**



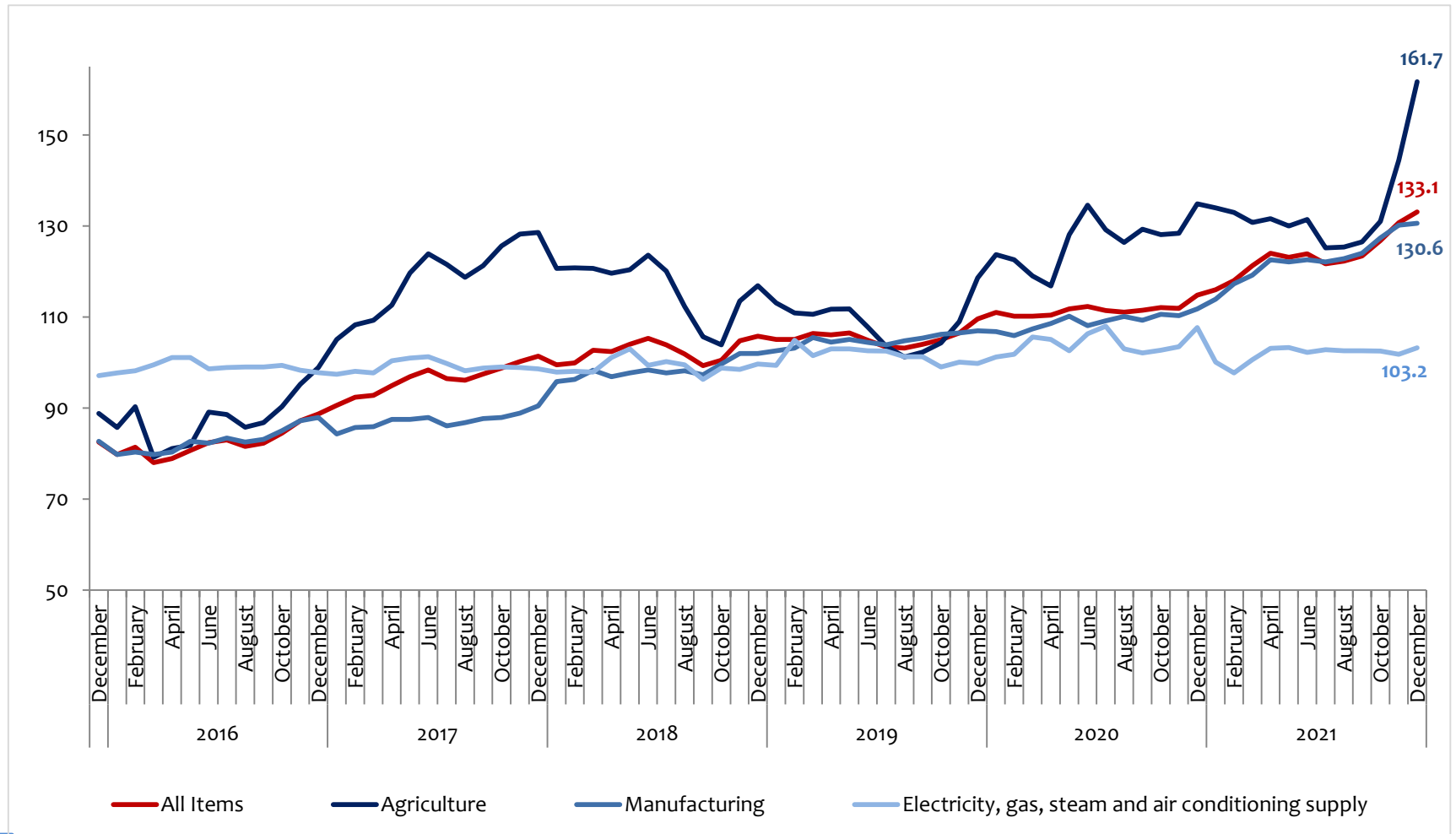
Source: Department of Census and Statistics

*Based on the National Consumer Price Index (2013=100)

**Core Inflation is calculated by excluding volatile food, energy and transport categories from the NCPI

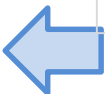


Producer's Price Index (PPI)*



Source: Department of Census and Statistics

*Based on the Producer's Price Index (PPI, 2018 Q4=100)

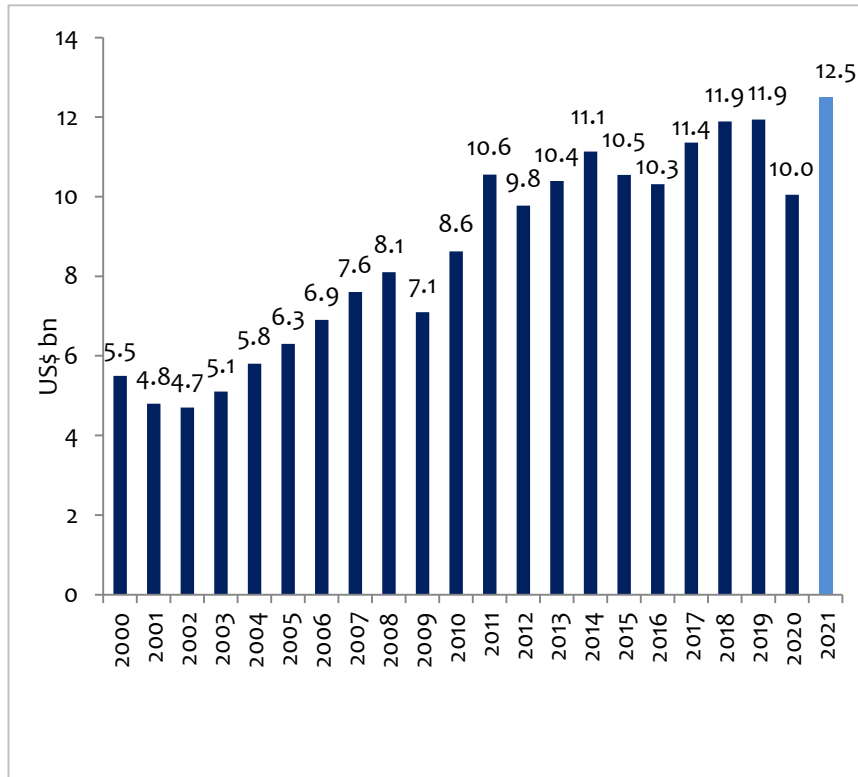


External Sector

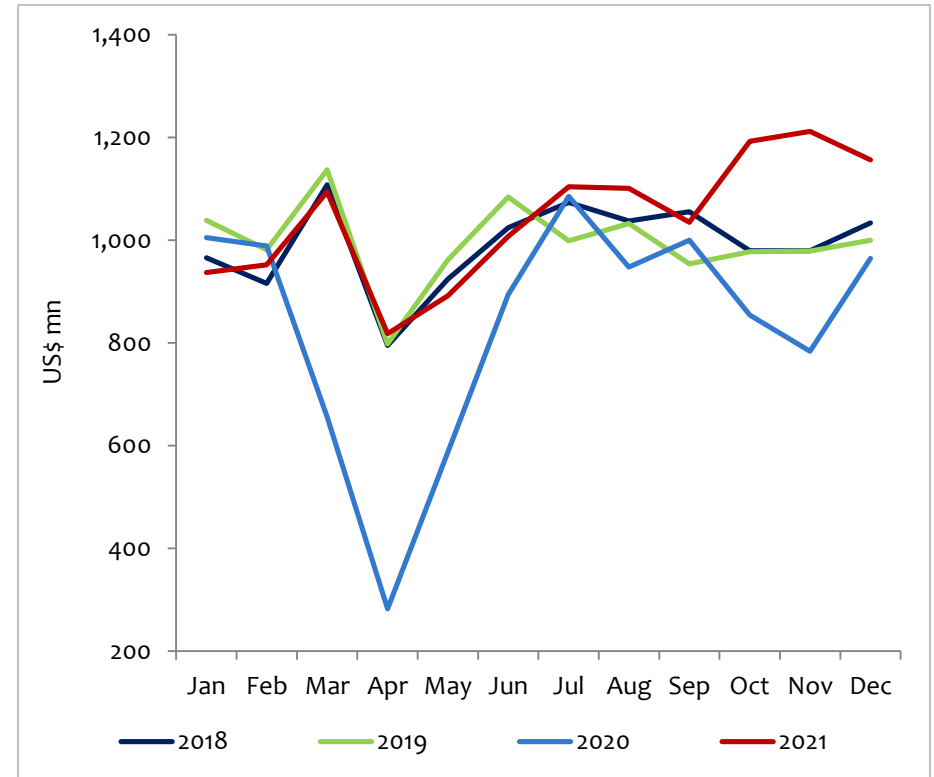


Earnings from Merchandise Exports

Merchandise Exports - Annual



Merchandise Exports - Monthly

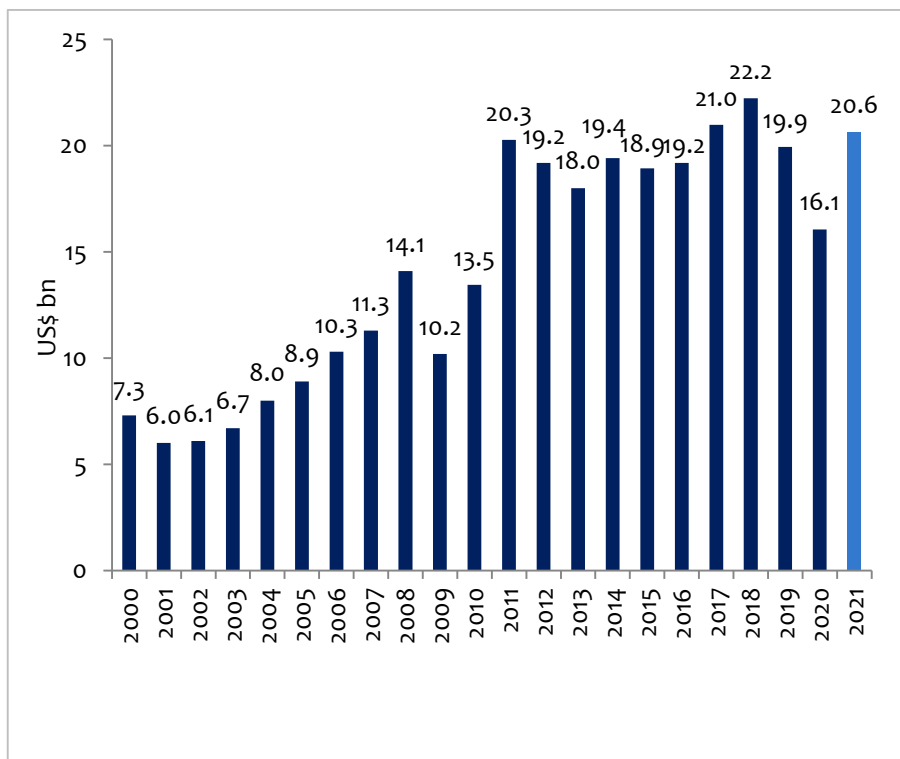


Sources: Central Bank of Sri Lanka and Sri Lanka Customs

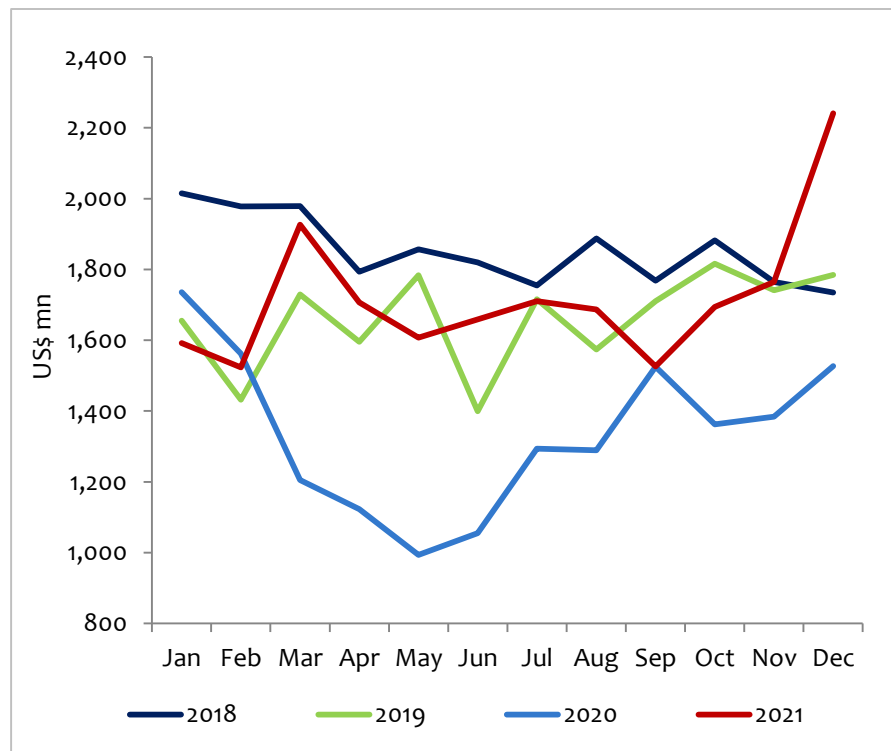


Expenditure on Merchandise Imports

Merchandise Imports - Annual



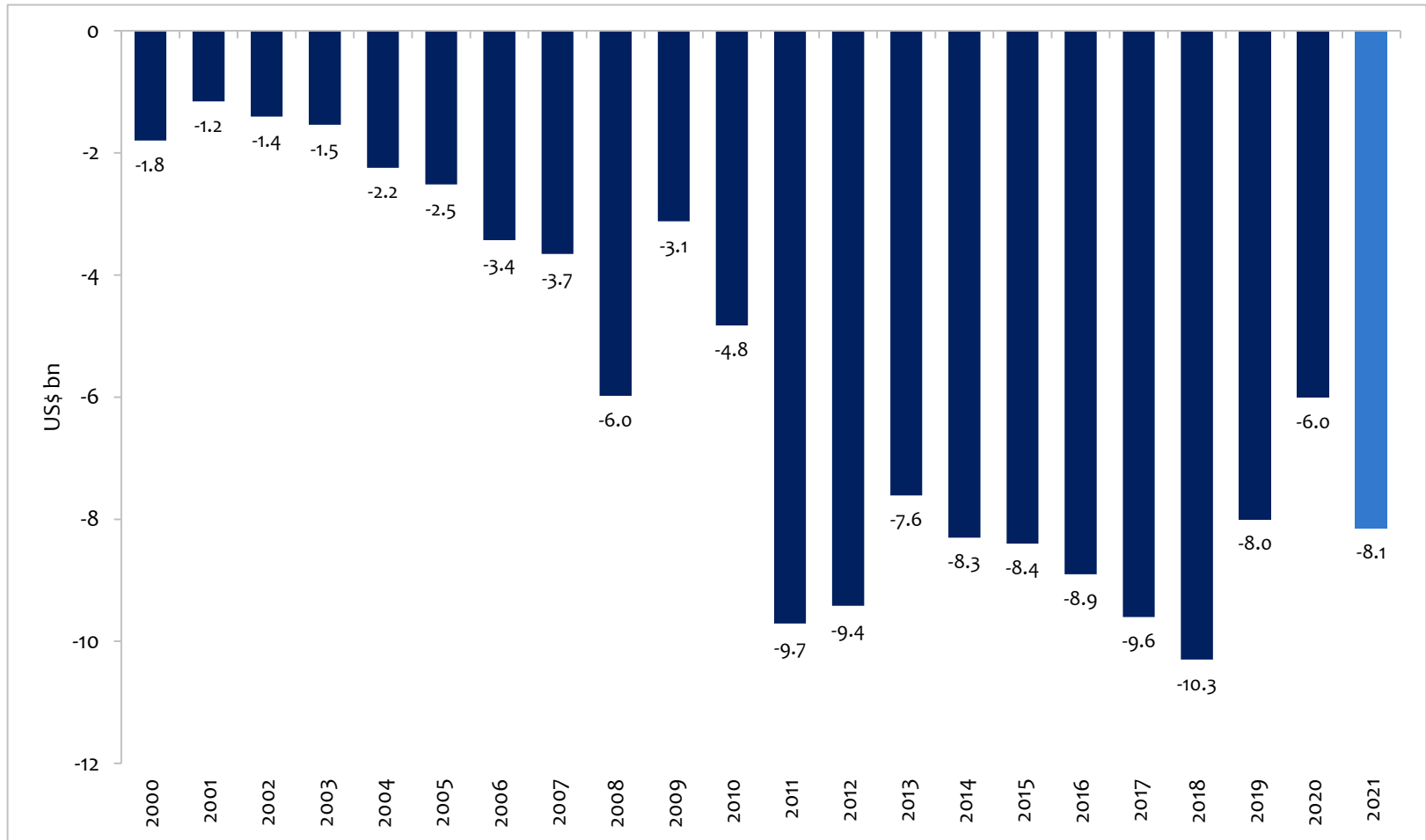
Merchandise Imports - Monthly



Sources: Central Bank of Sri Lanka and Sri Lanka Customs



Trade Balance

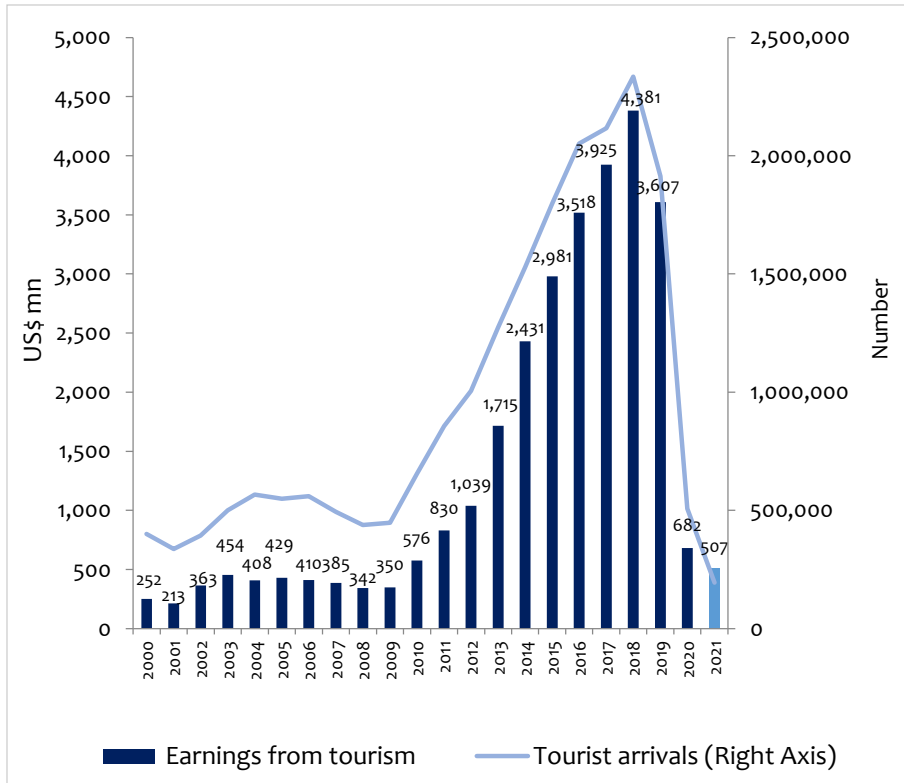


Source: Central Bank of Sri Lanka



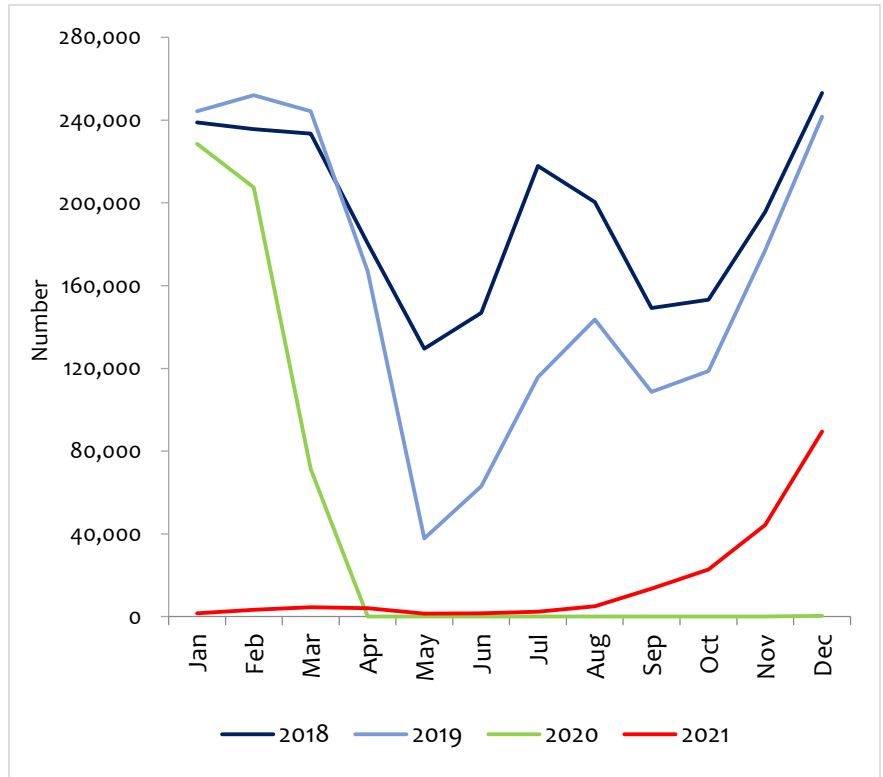
Tourism

Arrivals and Earnings



Sources: Central Bank of Sri Lanka and Sri Lanka Tourist Development Authority (SLTDA)

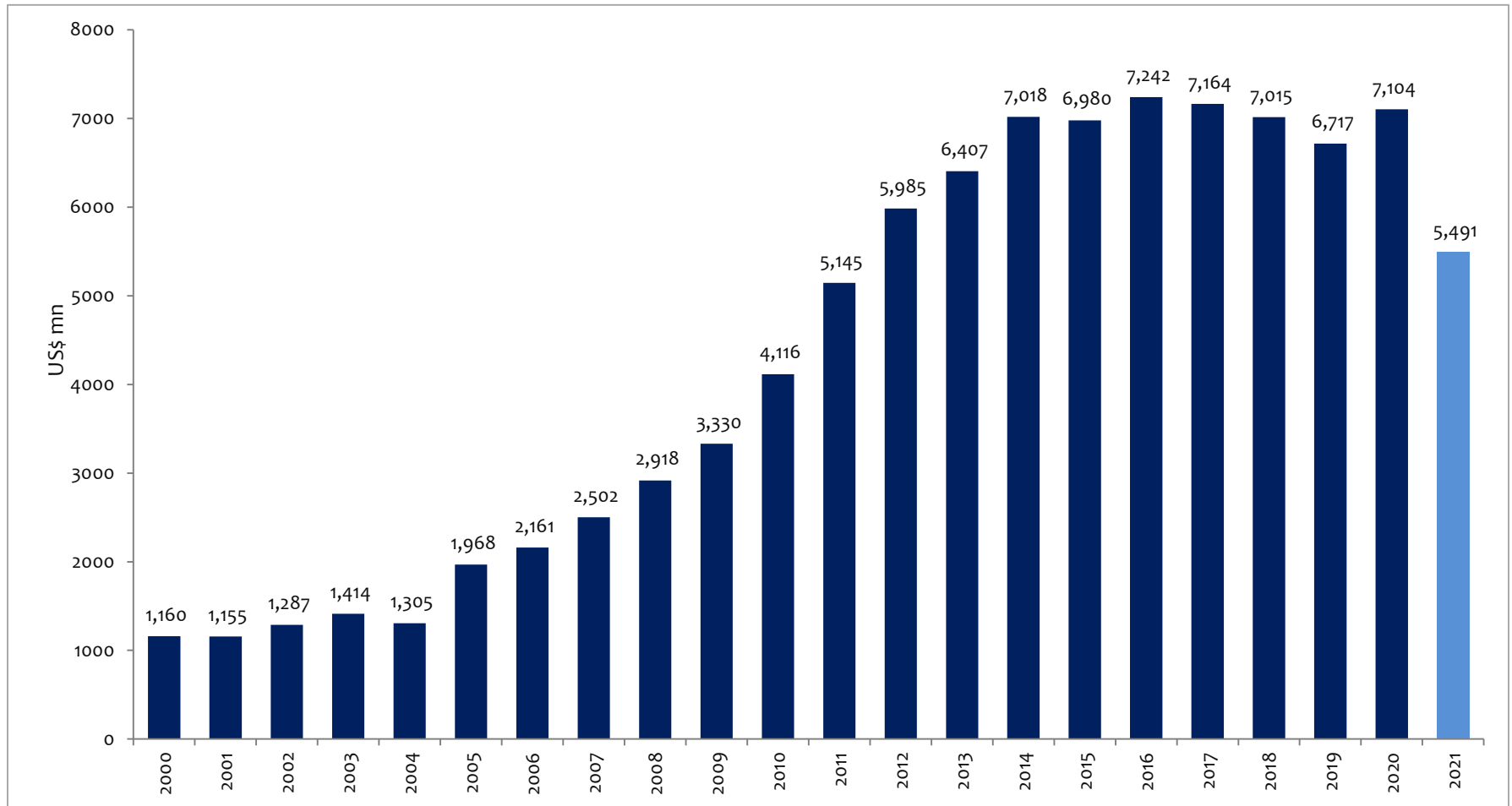
Monthly Arrivals



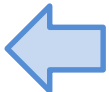
Source: SLTDA



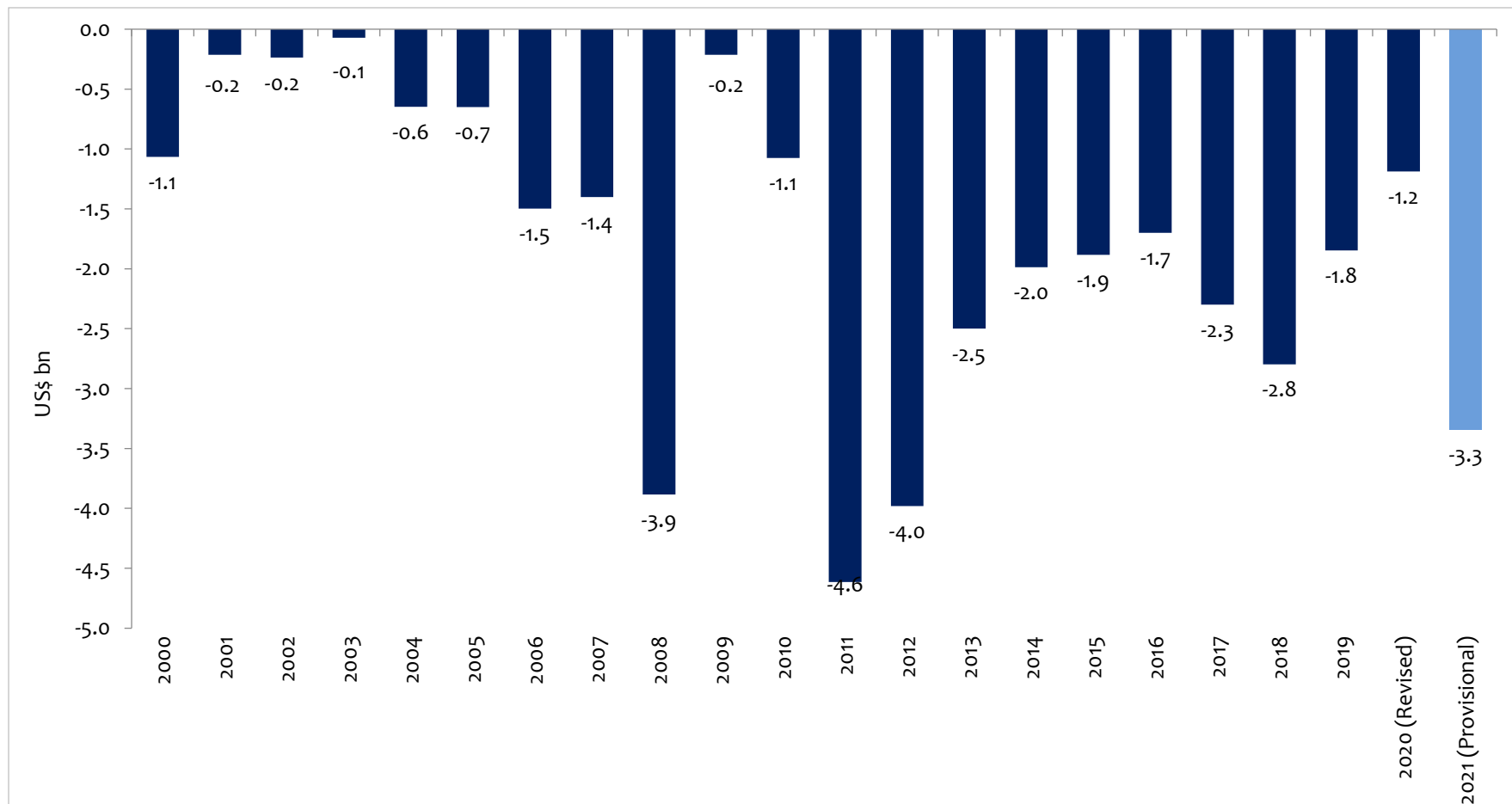
Workers' Remittances



Source: Central Bank of Sri Lanka



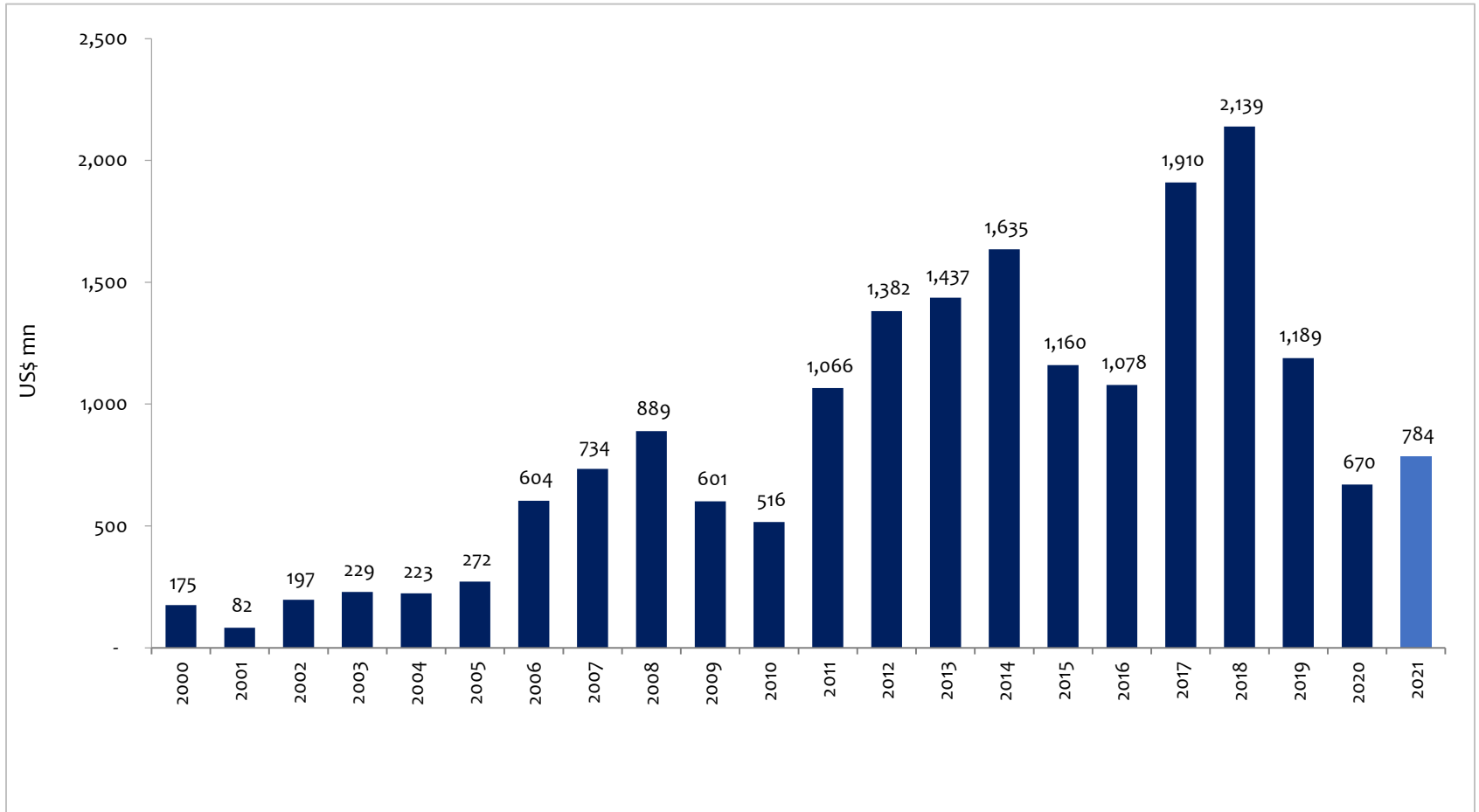
Current Account Balance



Source: Central Bank of Sri Lanka



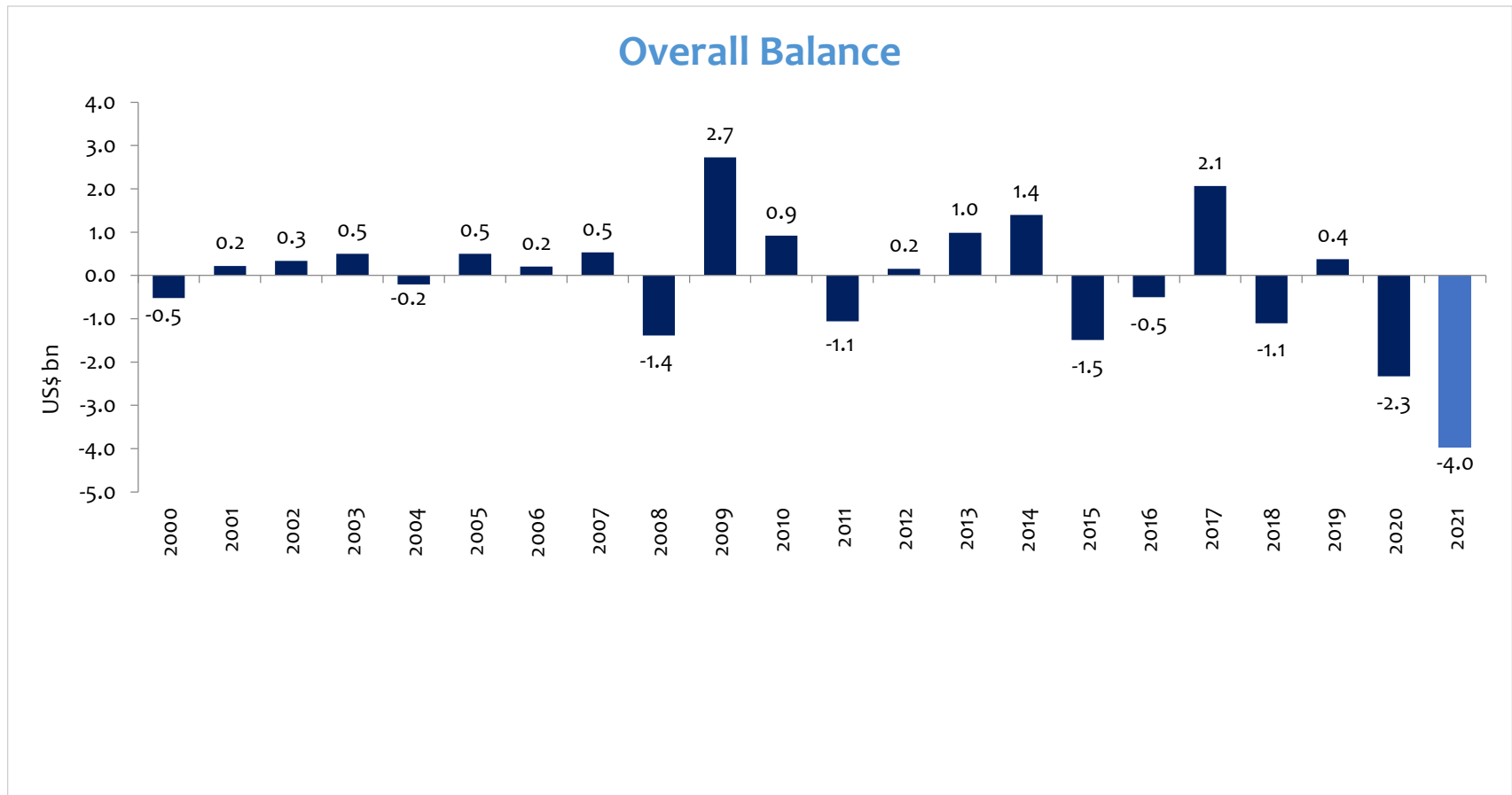
Foreign Direct Investment Inflows



Sources: Central Bank of Sri Lanka,
Board of Investment and Colombo Stock Exchange



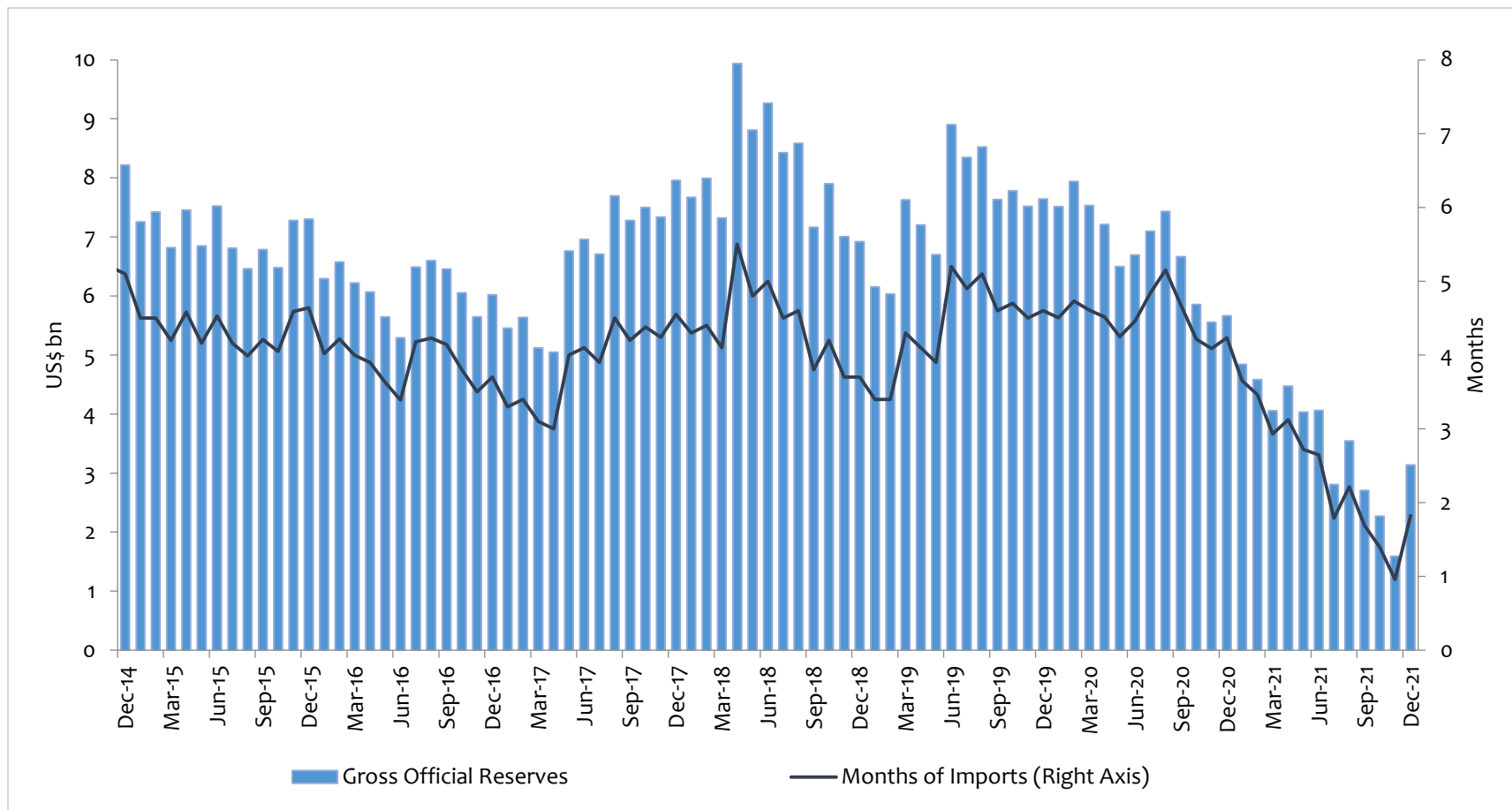
Balance of Payments



Source: Central Bank of Sri Lanka



Gross Official Reserves*

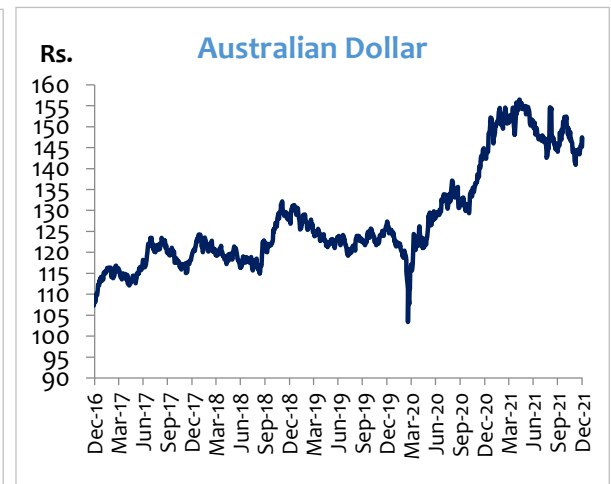
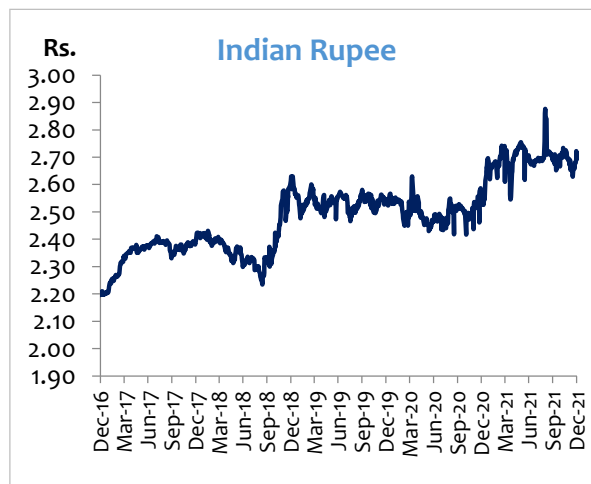
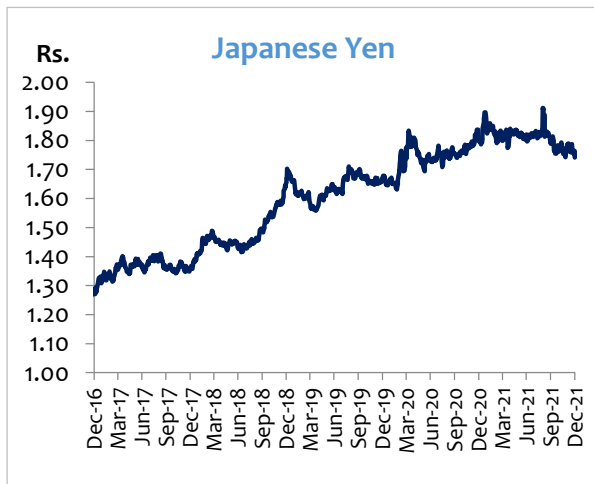
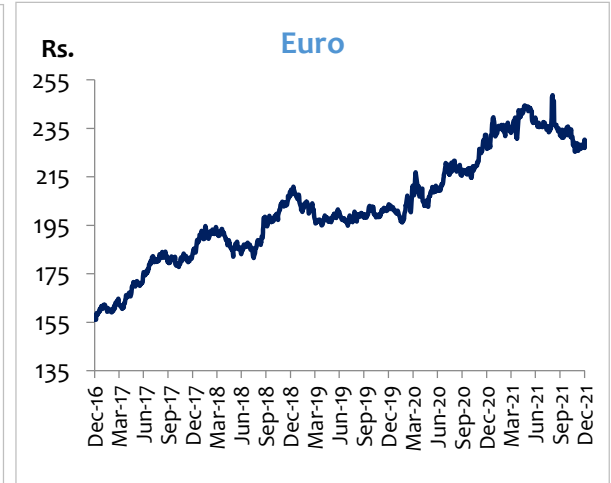
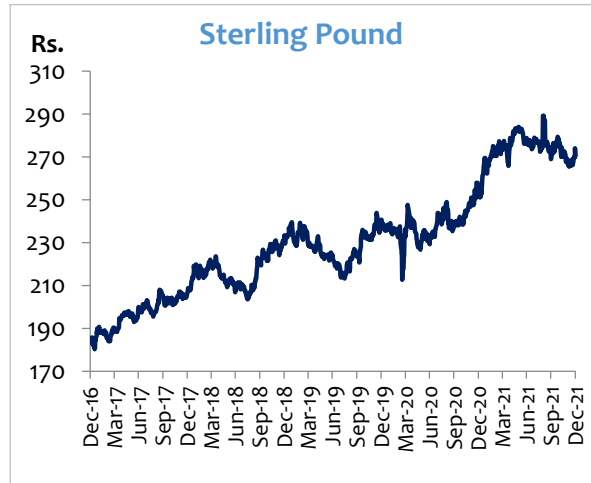
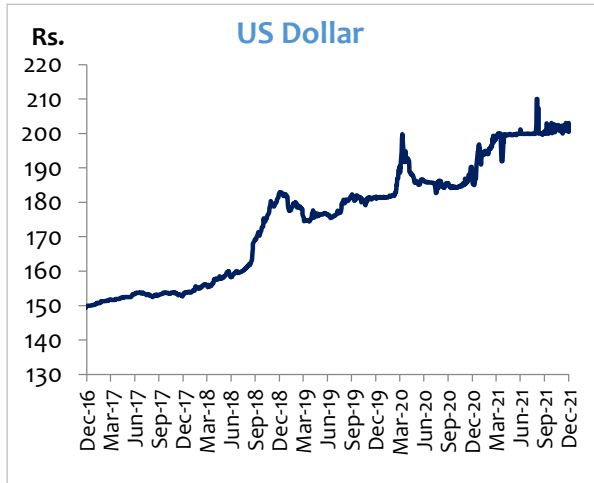


Source: Central Bank of Sri Lanka

* Proceeds from the People's Bank of China (PBOC) swap equivalent to around US dollars 1.5 billion, which is subject to conditionalities on usability, are included in Gross Official Reserves for end 2021



Exchange Rate Movements



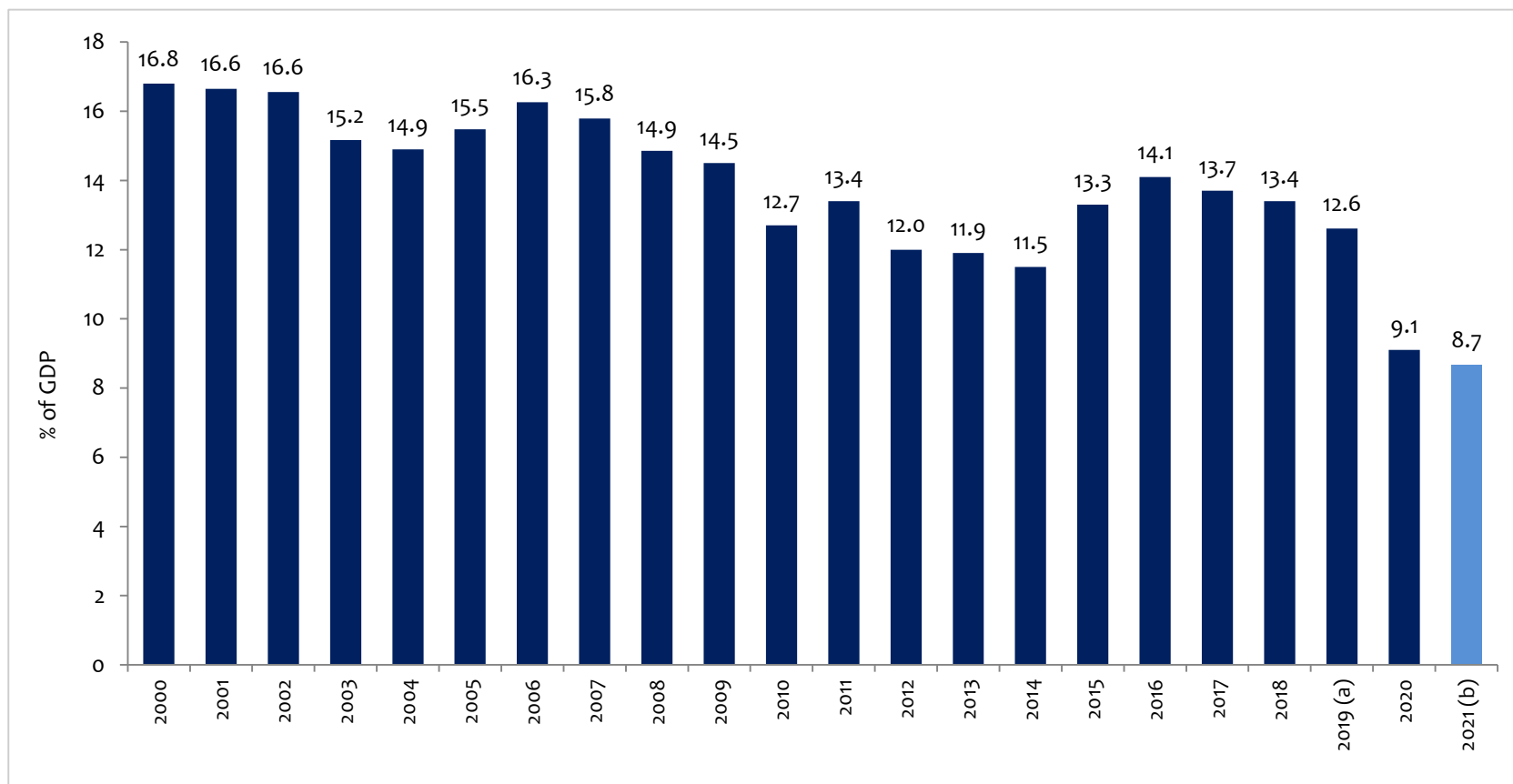
Source: Central Bank of Sri Lanka



Fiscal Sector



Government Revenue



Source: Ministry of Finance

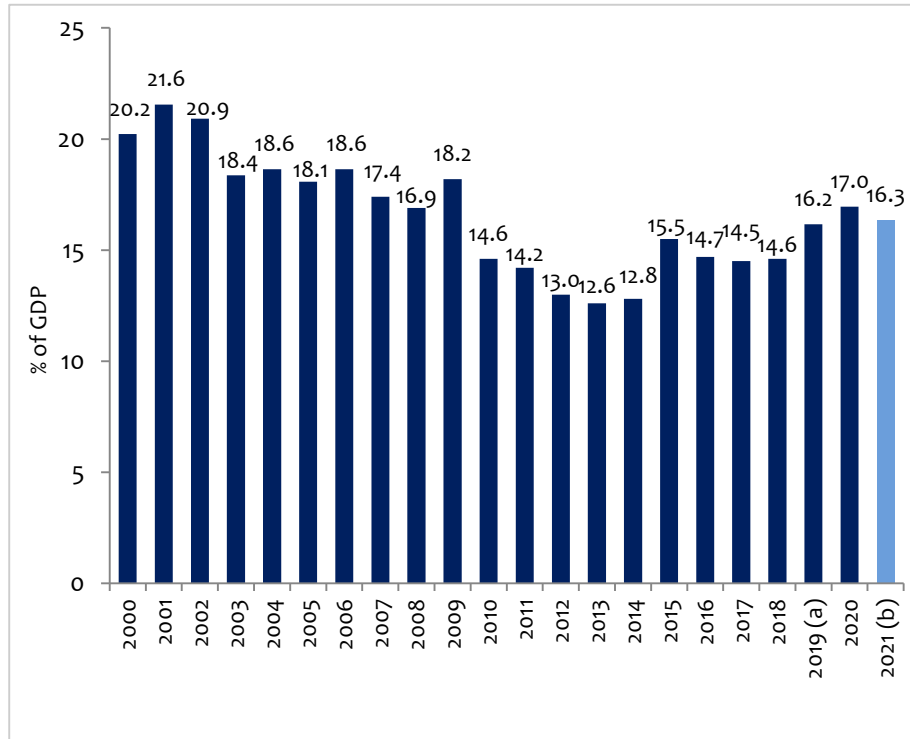
Note: Information from 2010 are based on rebased (2010 prices) estimates of GDP published by the Department of Census and Statistics
Data (2019-2020) are based on latest GDP estimates made available on 29 March 2022 by the Department of Census and Statistics

(a) According to the Ministry of Finance, the fiscal sector statistics of 2019 have been restated as announced in the Budget Speech for 2020
(b) Provisional

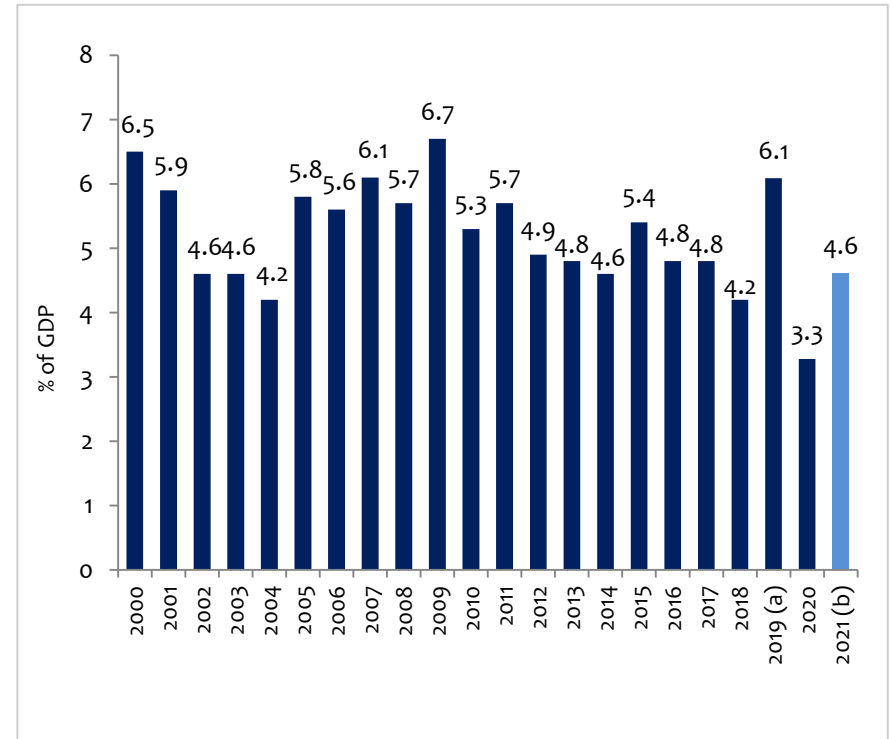


Government Expenditure

Recurrent Expenditure



Capital and Net Lending



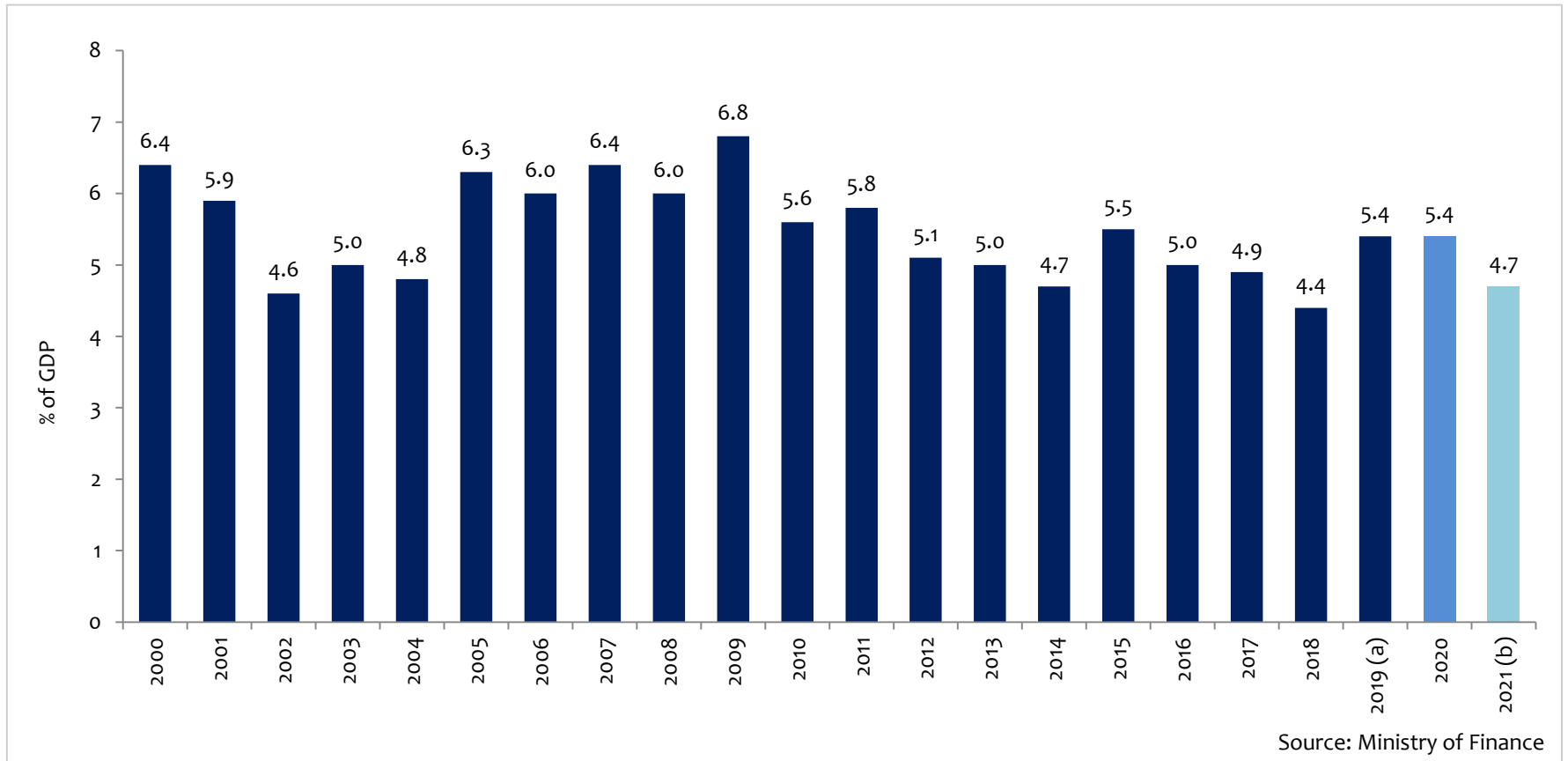
Source: Ministry of Finance

Note: Information from 2010 are based on rebased (2010 prices) estimates of GDP published by the Department of Census and Statistics
Data (2019-2020) are based on latest GDP estimates made available on 29 March 2022 by the Department of Census and Statistics

(a) According to the Ministry of Finance, the fiscal sector statistics of 2019 have been restated as announced in the Budget Speech for 2020
(b) Provisional



Public Investment

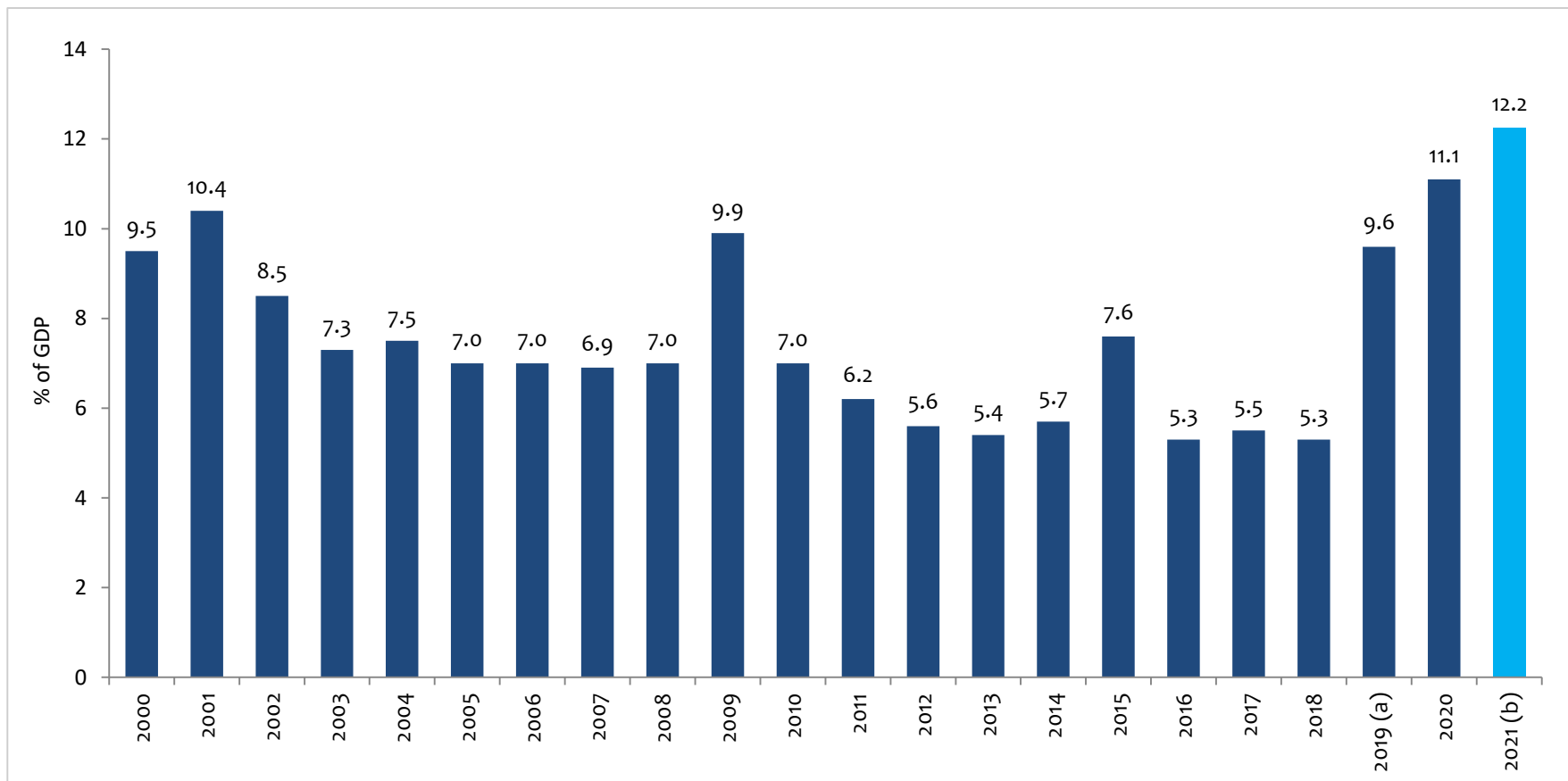


Note: Information from 2010 are based on rebased (2010 prices) estimates of GDP published by the Department of Census and Statistics
Data (2019-2020) are based on latest GDP estimates made available on 29 March 2022 by the Department of Census and Statistics

(a) According to the Ministry of Finance, the fiscal sector statistics of 2019 have been restated as announced in the Budget Speech for 2020
(b) Provisional



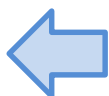
Budget Deficit



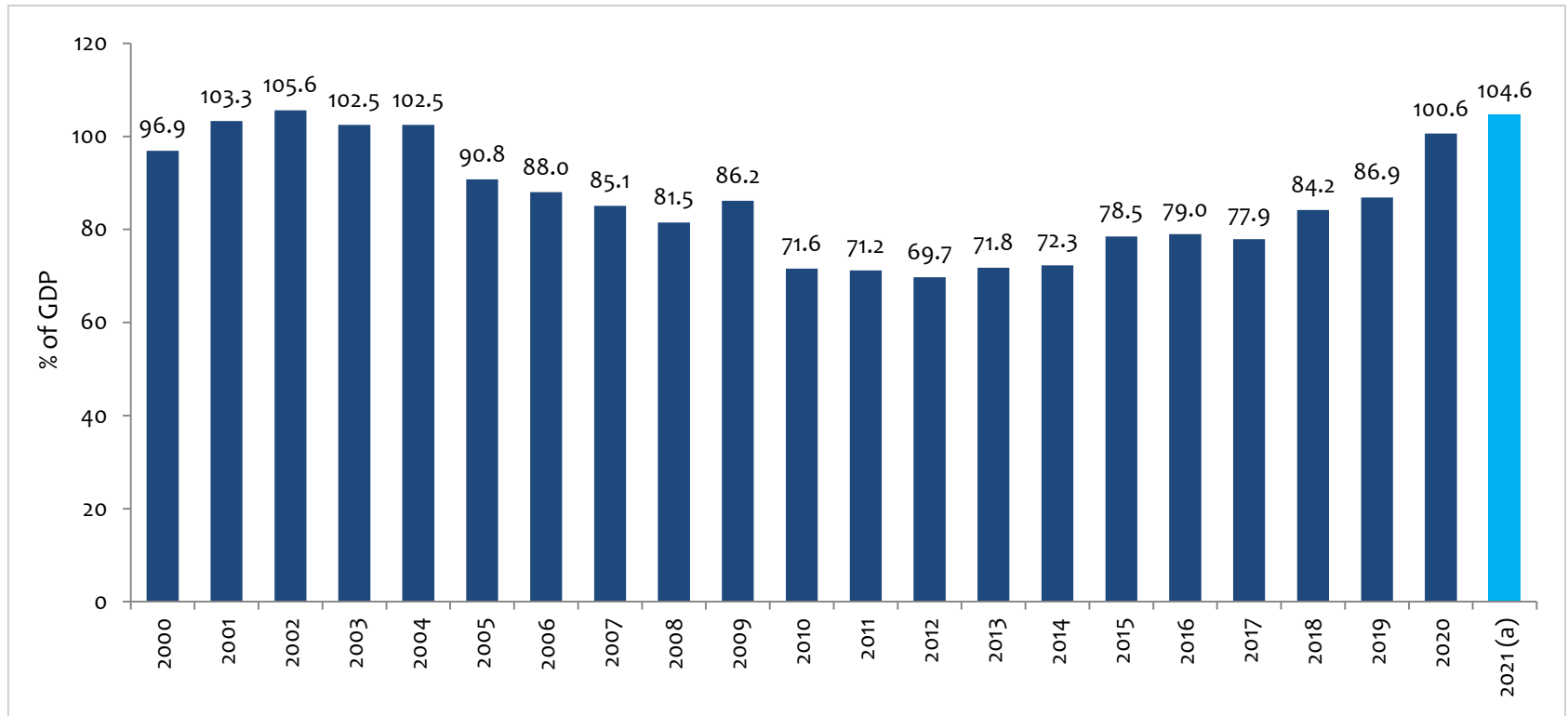
Source: Ministry of Finance

Note: Information from 2010 are based on rebased (2010 prices) estimates of GDP published by the Department of Census and Statistics
Data (2019-2020) are based on latest GDP estimates made available on 29 March 2022 by the Department of Census and Statistics

- (a) According to the Ministry of Finance, the fiscal sector statistics of 2019 have been restated as announced in the Budget Speech for 2020
- (b) Provisional



Central Government Debt



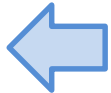
Source: Ministry of Finance
Central Bank of Sri Lanka

Note: Information from 2010 are based on rebased (2010 prices) estimates of GDP published by the Department of Census and Statistics.
Data (2018-2021) are based on latest GDP estimates made available on 29 March 2022 by the Department of Census and Statistics.

(a) Provisional



Monetary Sector

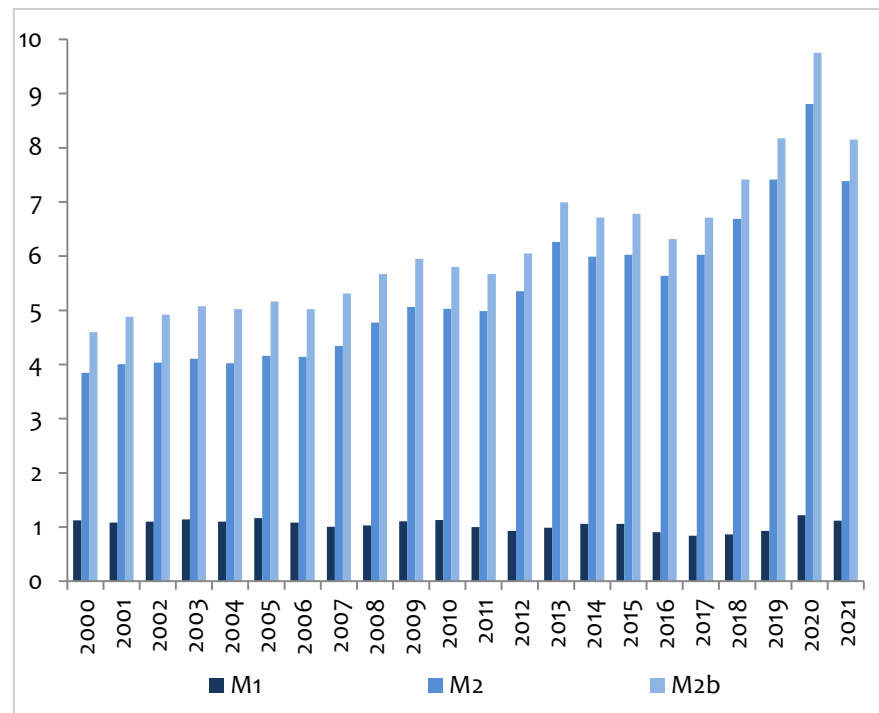


Reserve Money Growth and Money Multiplier

Reserve Money Growth (Y-O-Y)



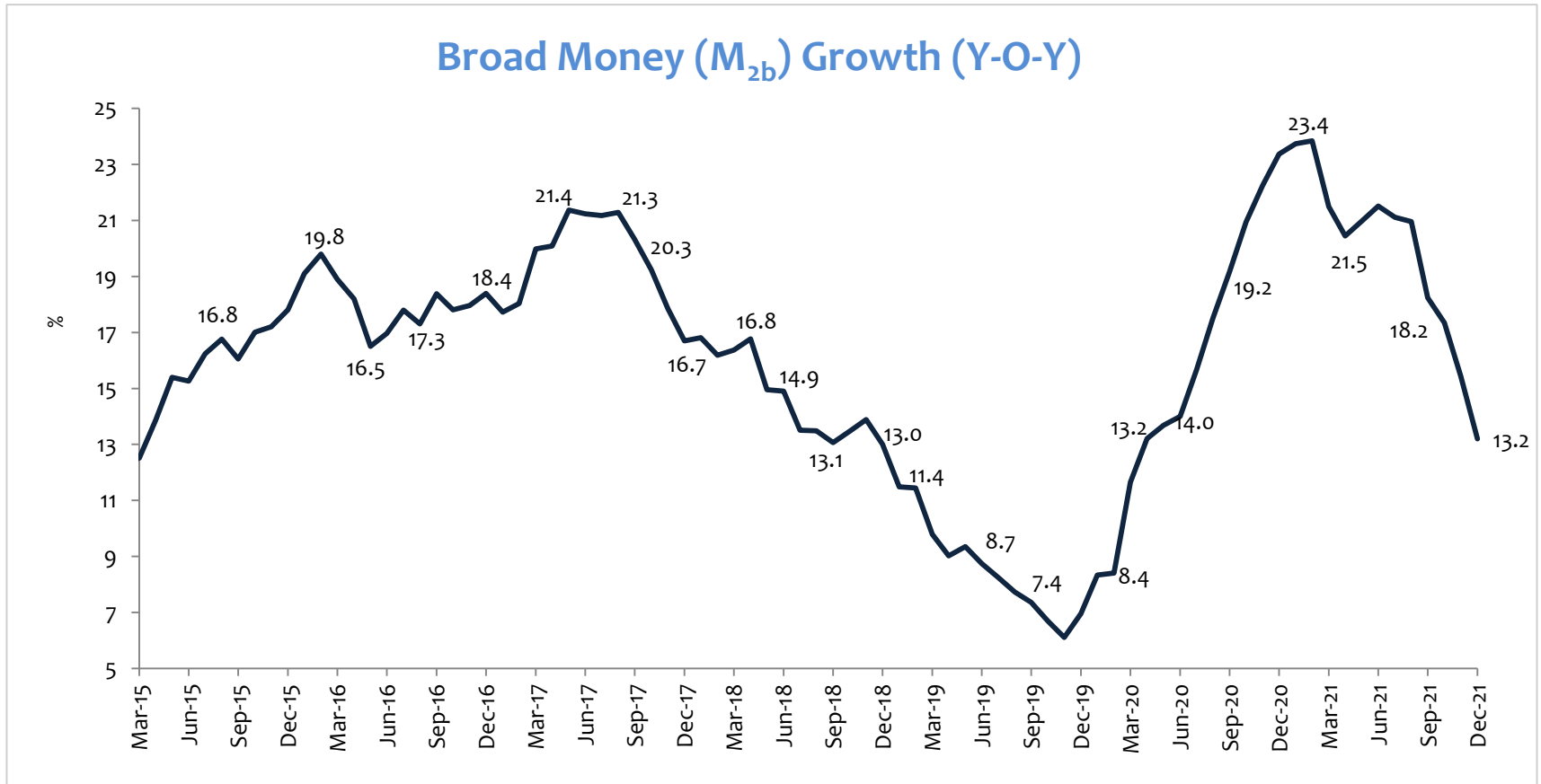
Money Multiplier



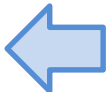
Source: Central Bank of Sri Lanka



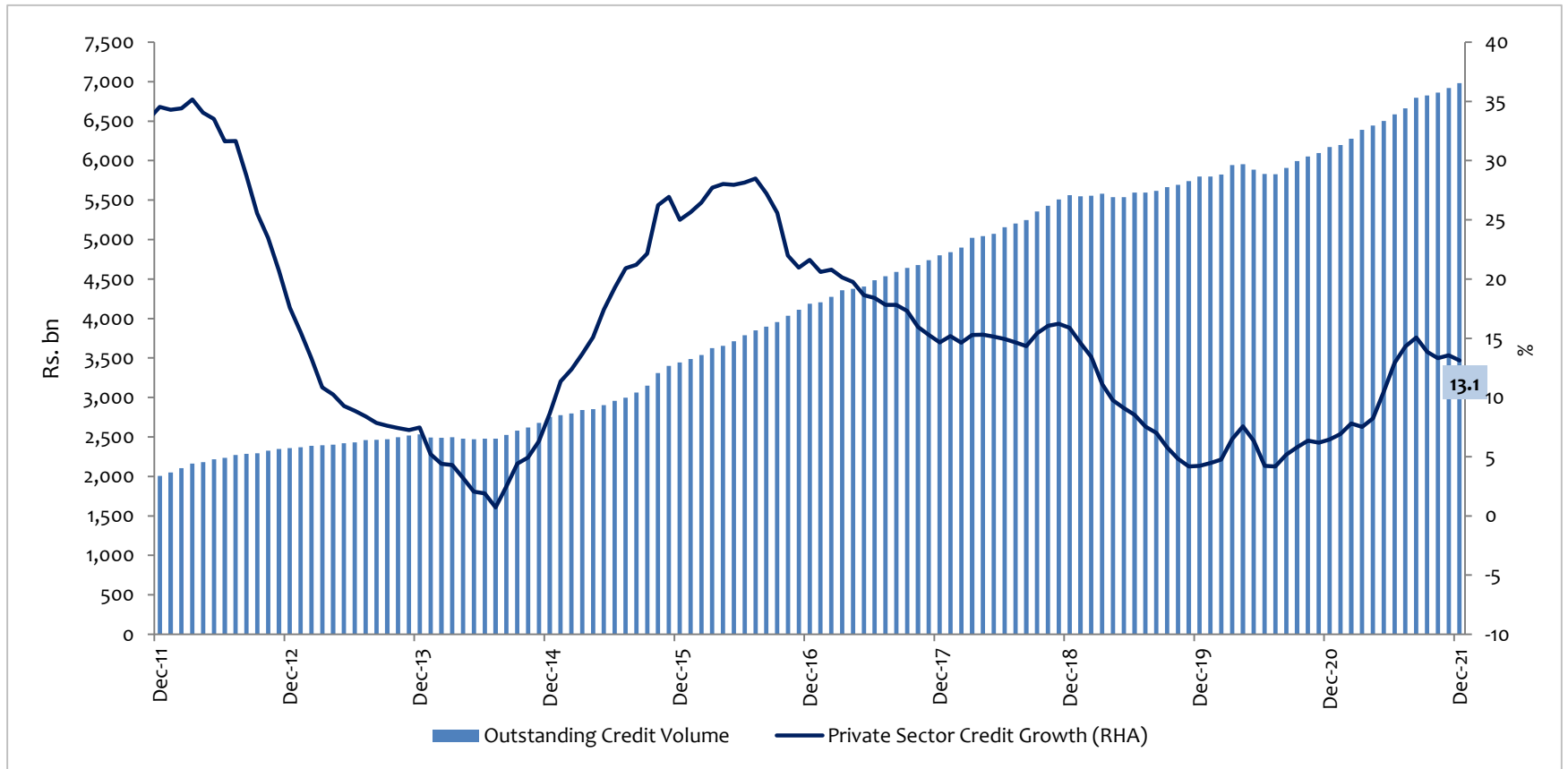
Broad Money Growth



Source: Central Bank of Sri Lanka



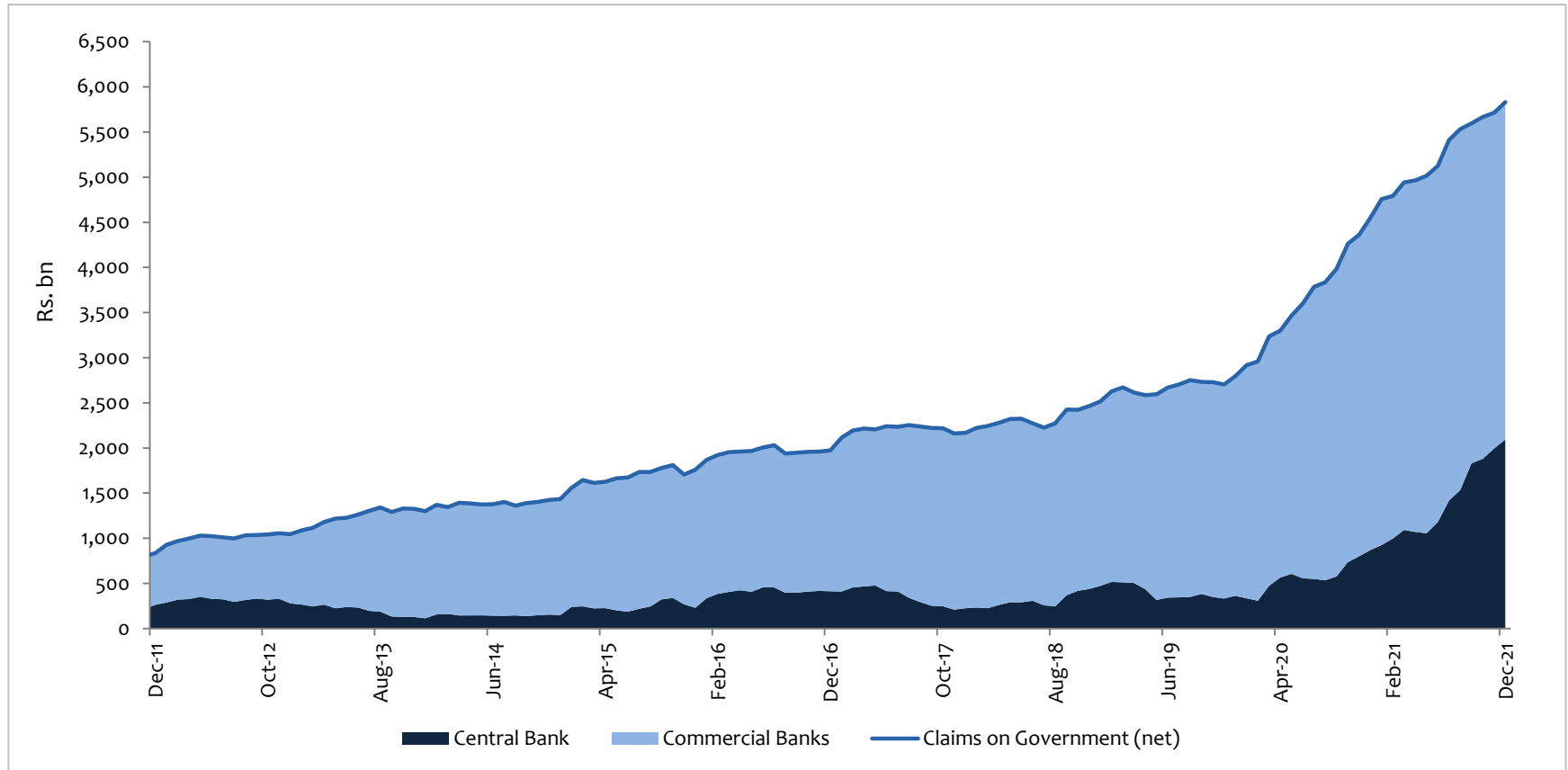
Credit to the Private Sector



Source: Central Bank of Sri Lanka



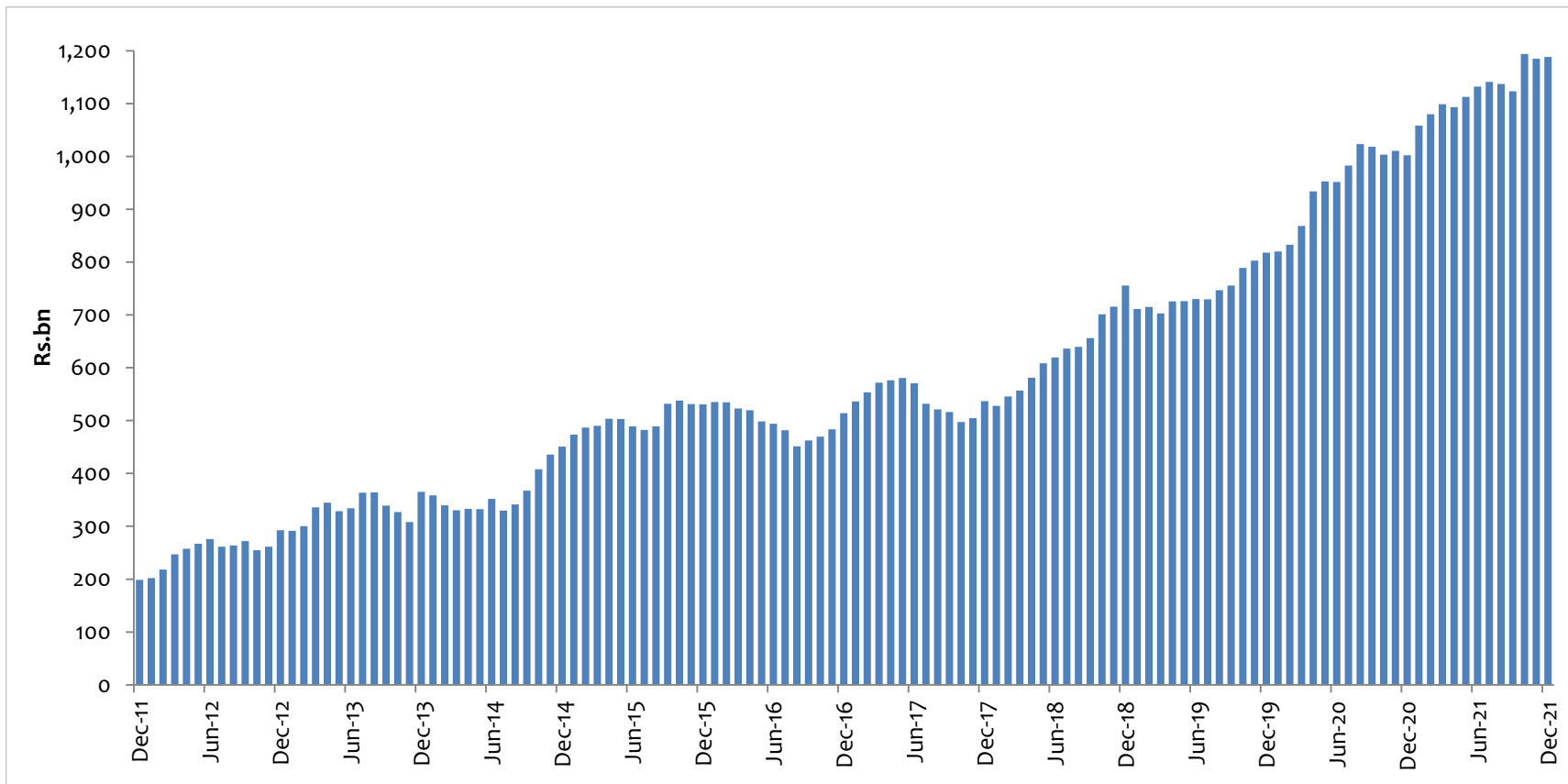
Net Credit to the Government



Source: Central Bank of Sri Lanka



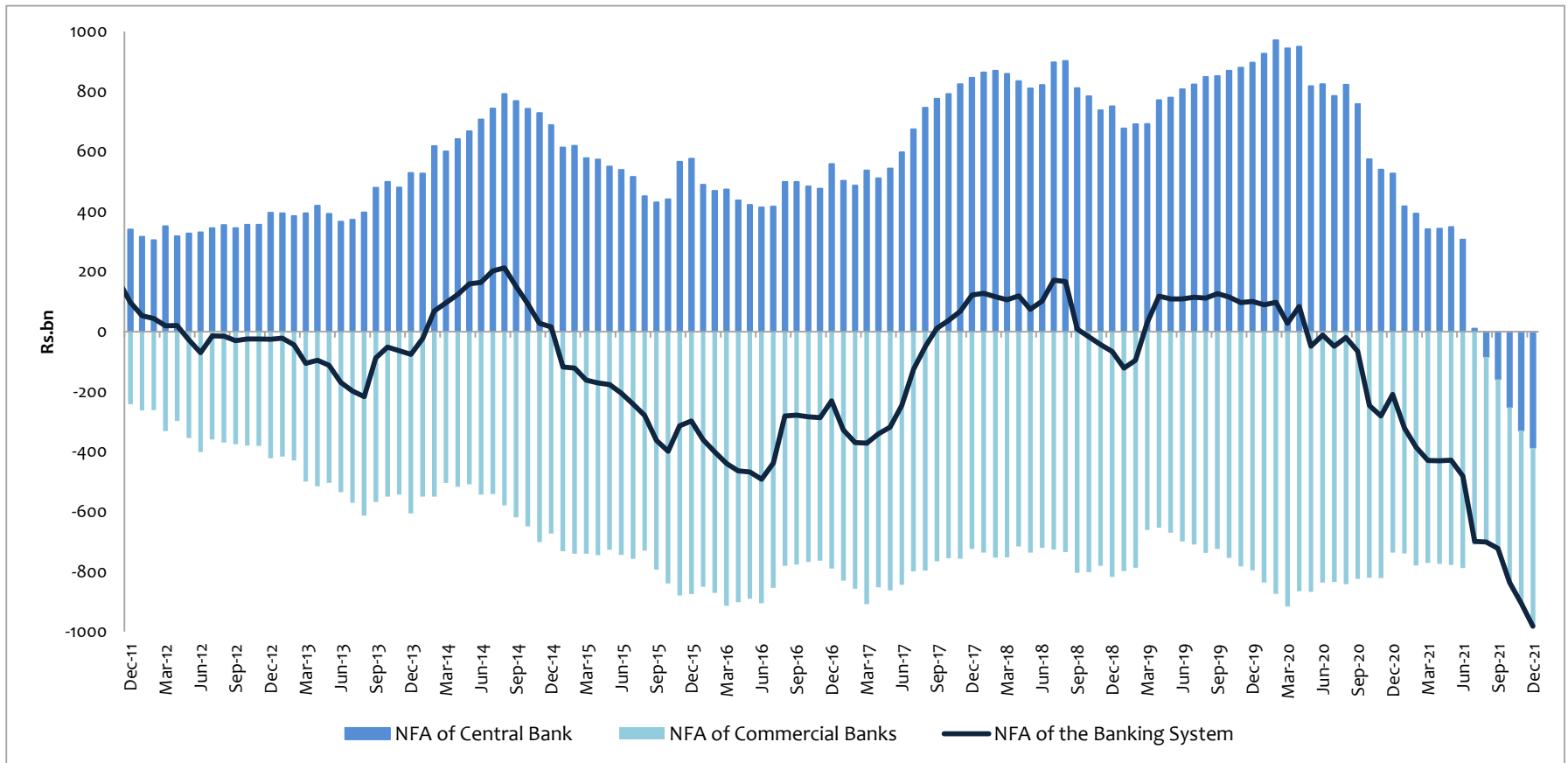
Credit to Public Corporations



Source: Central Bank of Sri Lanka



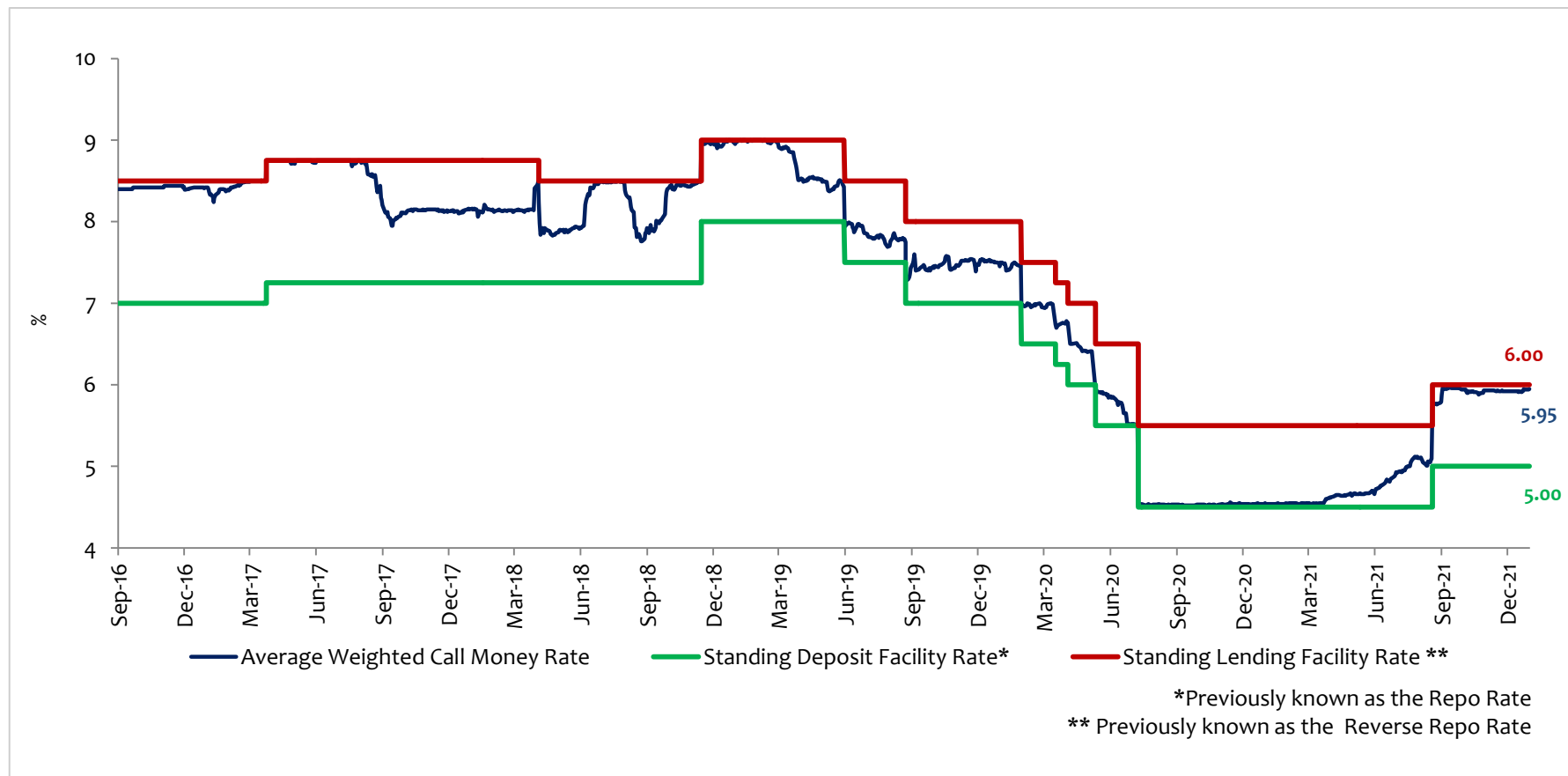
Net Foreign Assets (NFA)



Source: Central Bank of Sri Lanka



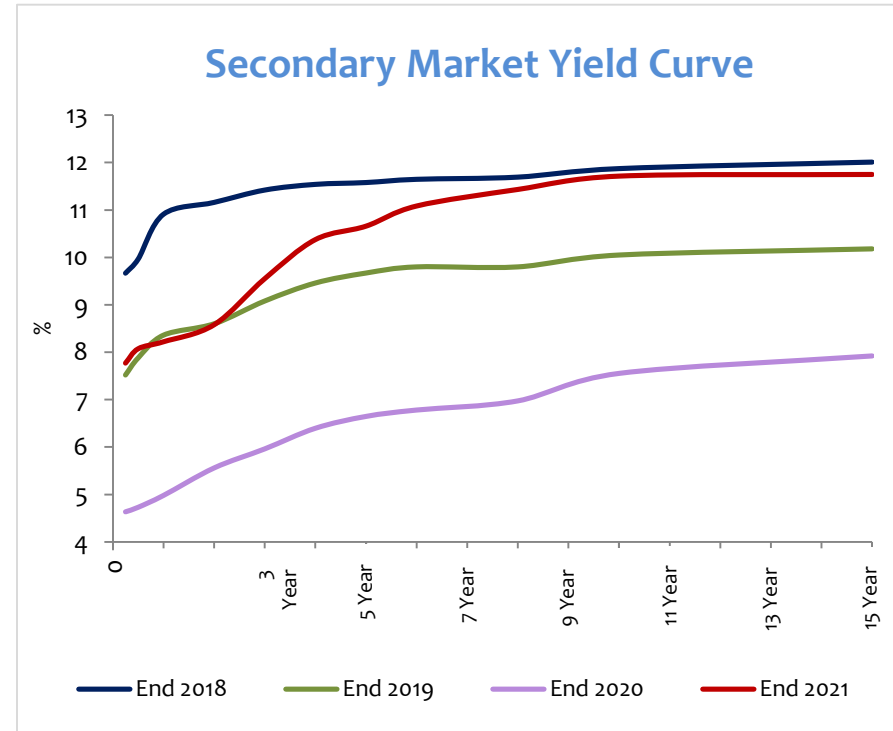
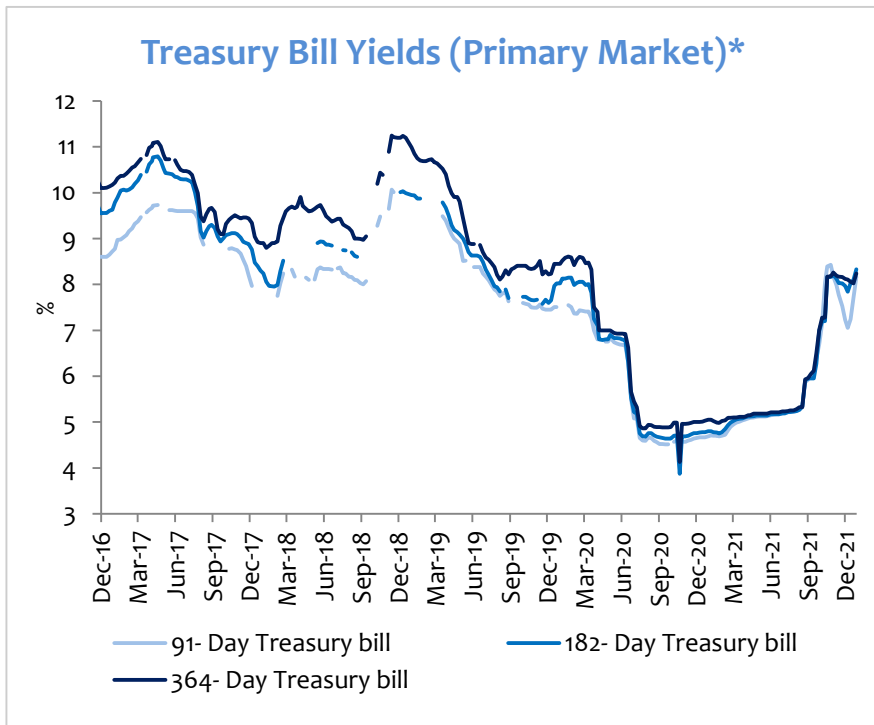
Policy Interest Rates and Overnight Money Market Rates



Source: Central Bank of Sri Lanka



Treasury Bill Yields and the Yield Curve

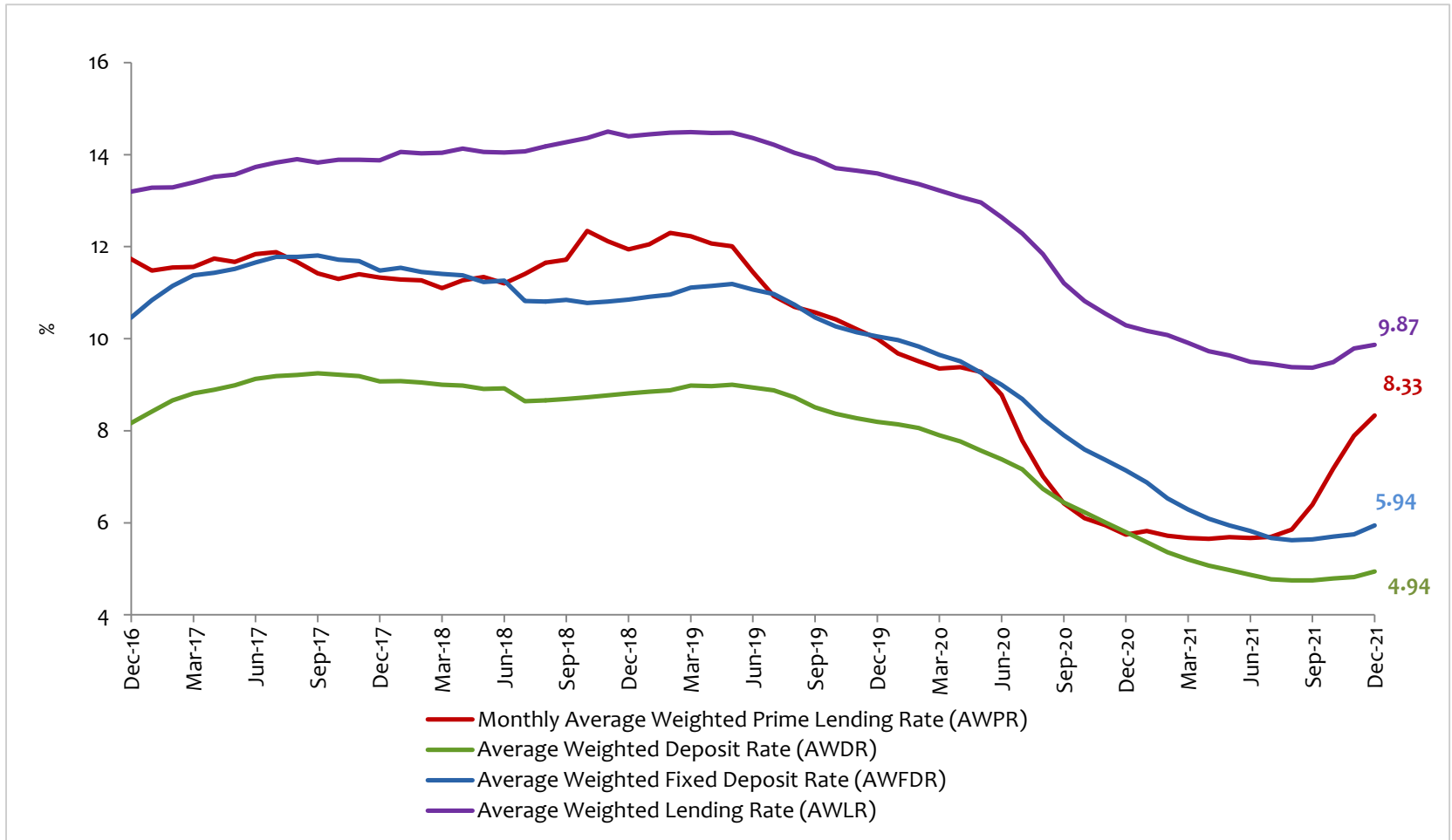


Source: Central Bank of Sri Lanka

*Yield rates for some weeks are not available due to non-acceptance of bids or not offering of relevant tenors



Market Interest Rates



Source: Central Bank of Sri Lanka

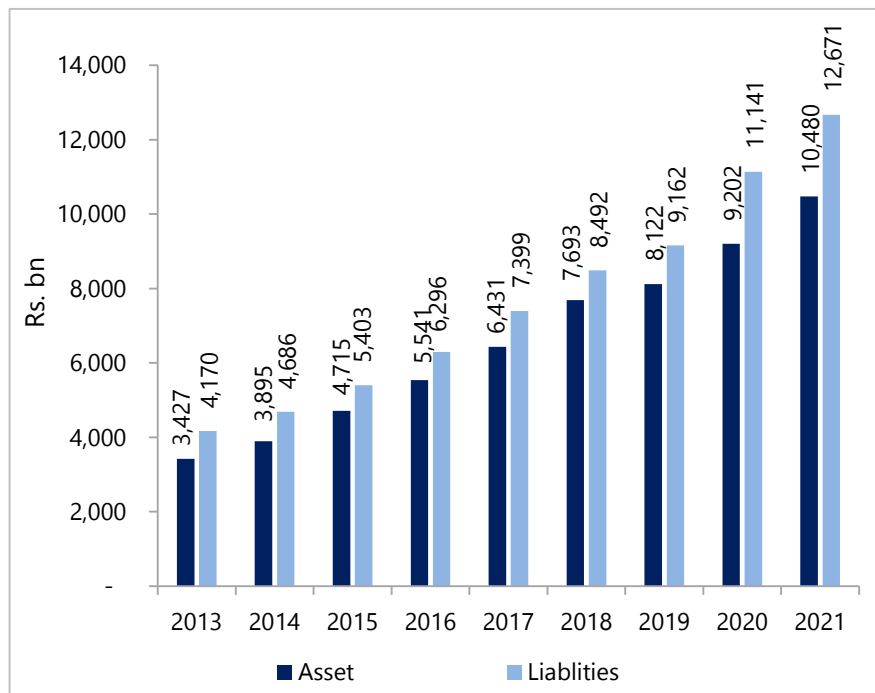


Financial Sector

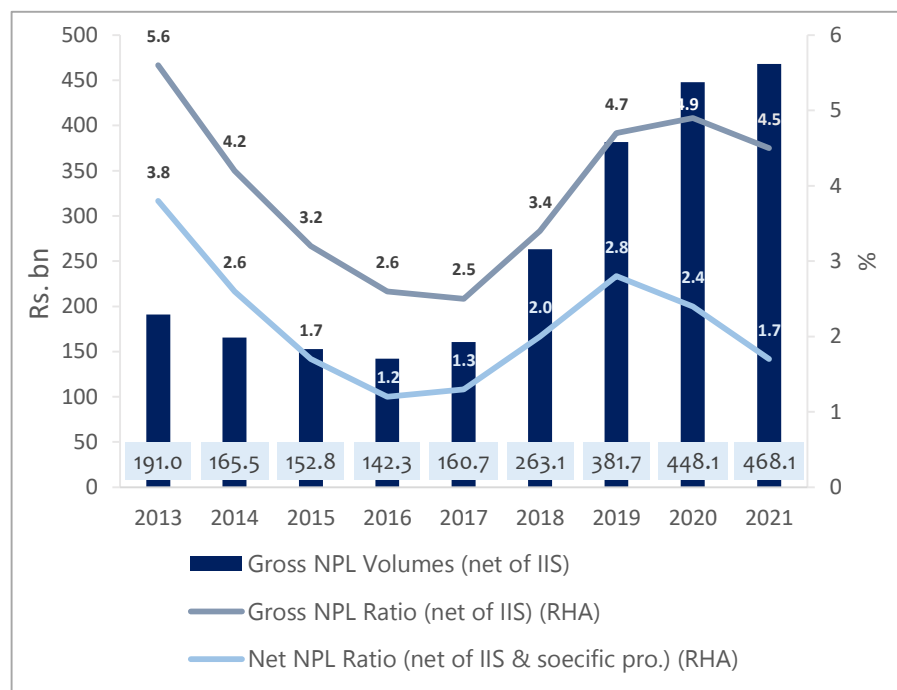


Banking Sector Indicators (i)

Assets and Liabilities of the Banking Sector



Non-Performing Loans of the Banking Sector



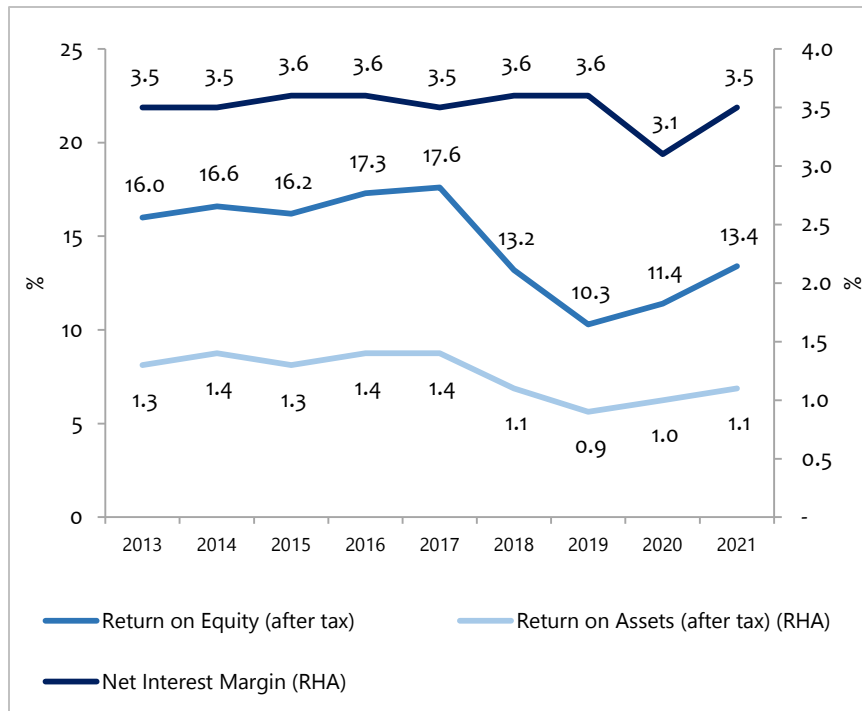
Source: Central Bank of Sri Lanka

IIS: Interest In Suspense

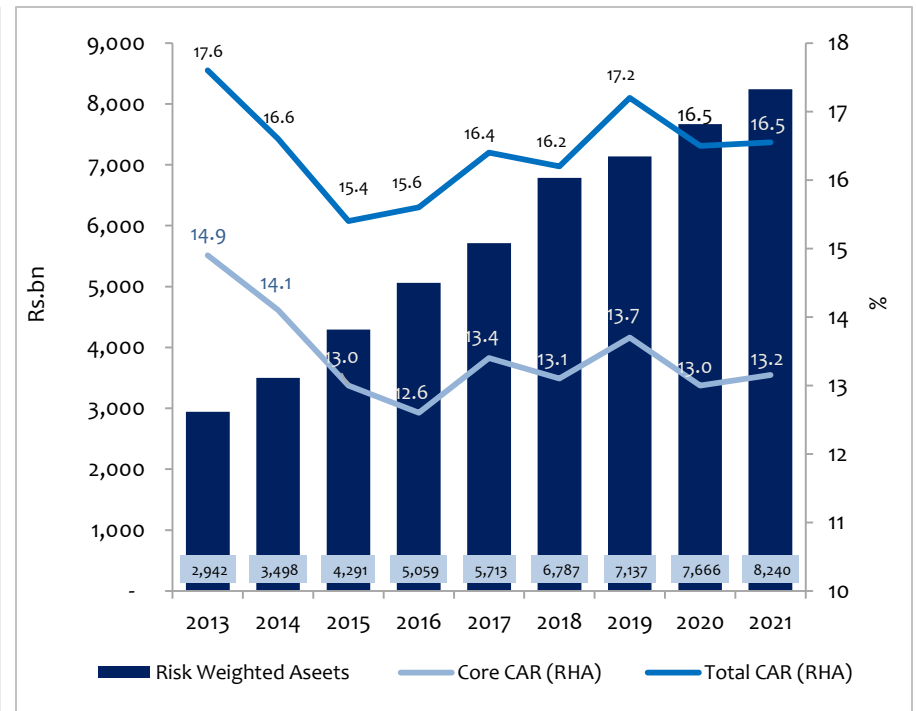


Banking Sector Indicators (ii)

Profitability Indicators



Capital Adequacy Ratios

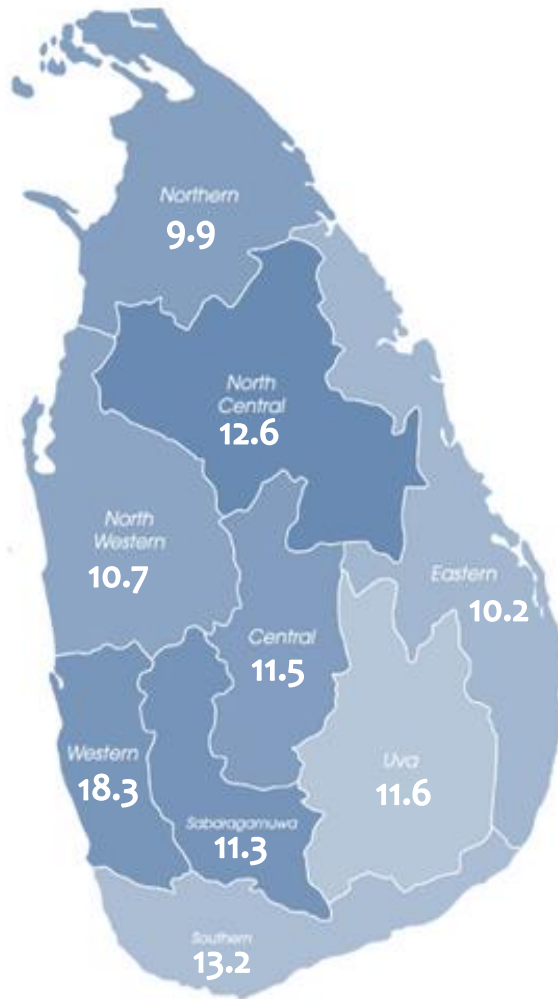


Source: Central Bank of Sri Lanka

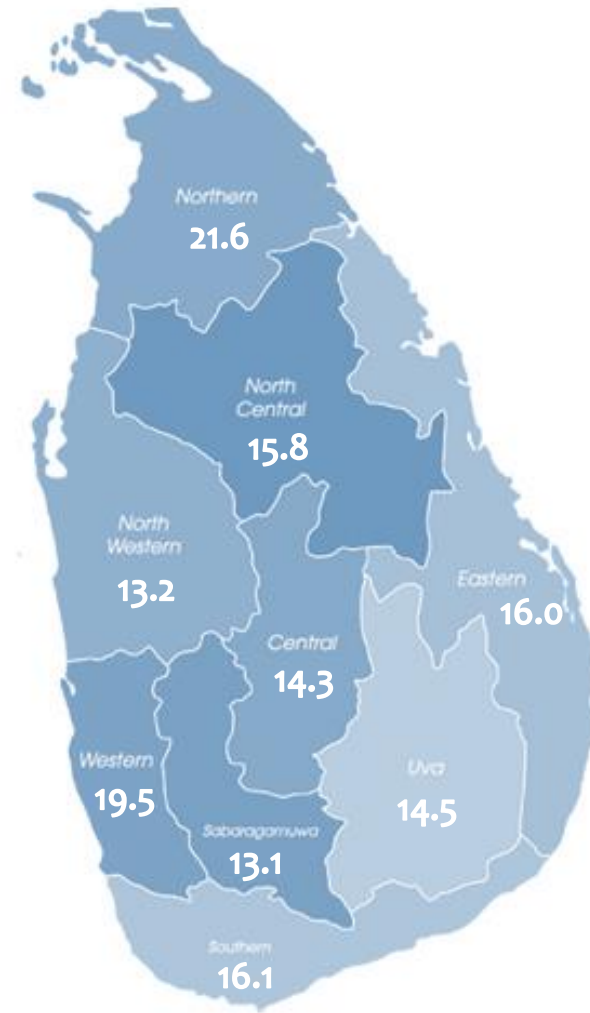


Banking Density by Province*

2009

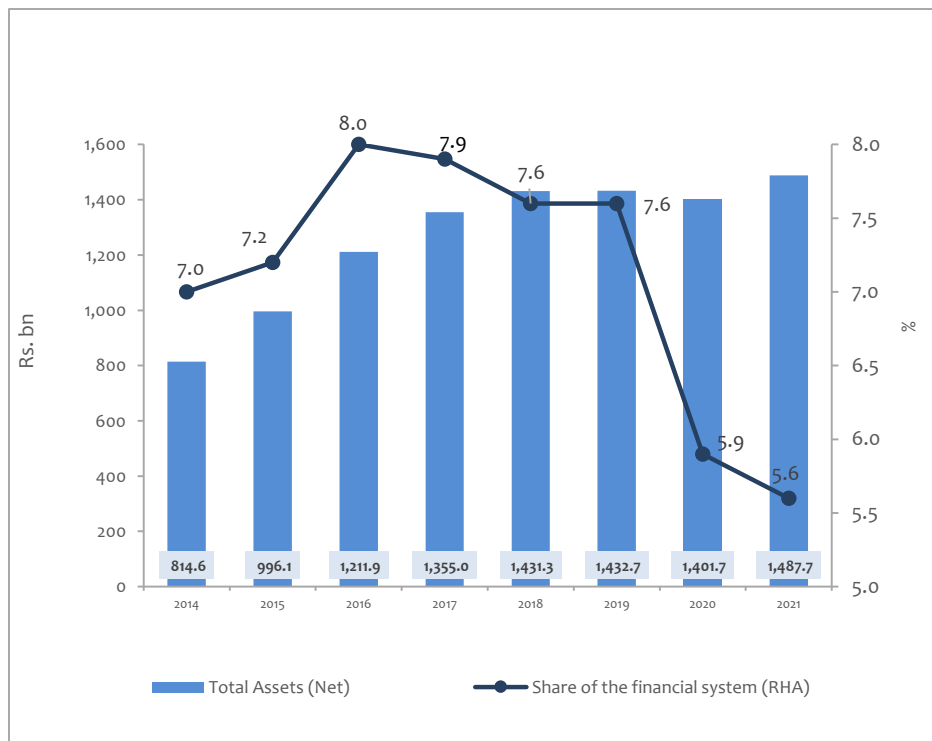


2021 Q4

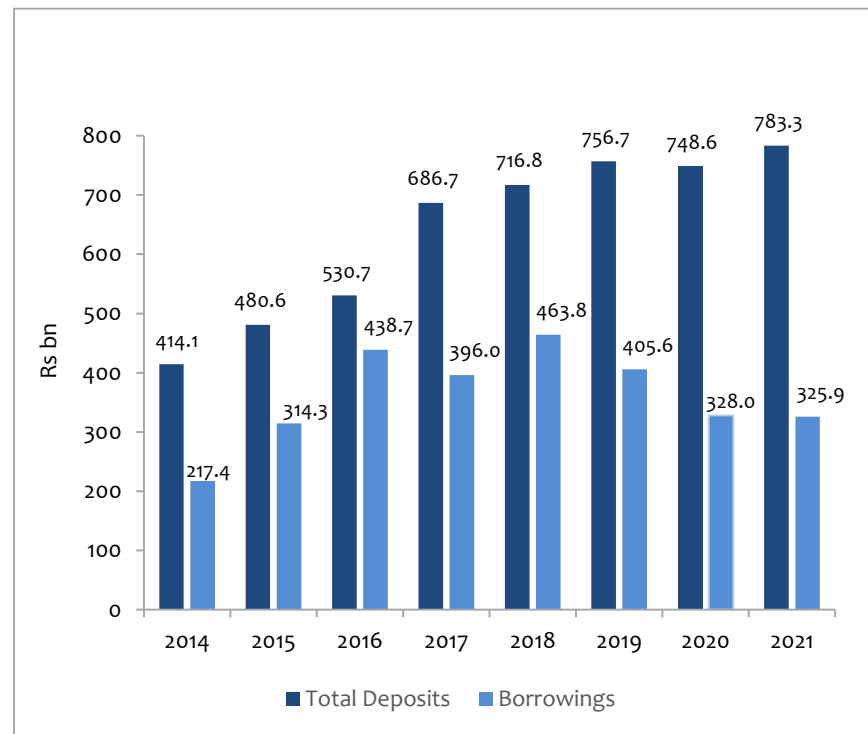


Non-Bank Financial Sector Indicators (i)

Assets of the LFC & SLC Sector



Total Deposits and Borrowings of the LFC & SLC Sector*



Source: Central Bank of Sri Lanka

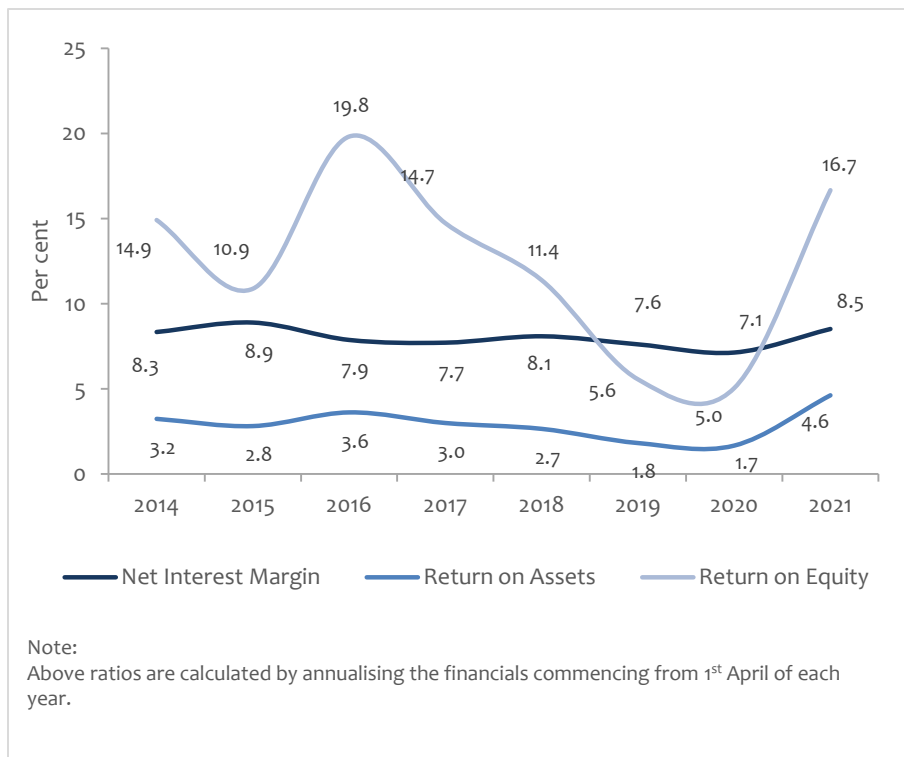
* Deposits are only mobilised by the LFCs

LFC: Licensed Finance Companies
SLC: Specialised Leasing Companies

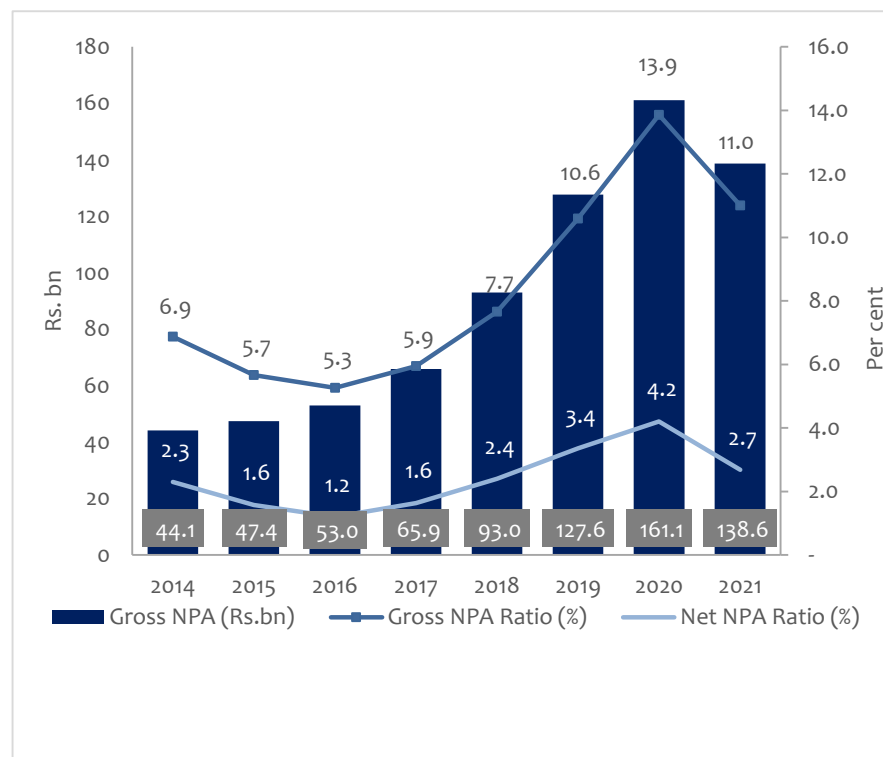


Non-Bank Financial Sector Indicators (ii)

Profitability Indicators of the LFC and SLC Sector



Non-Performing Advances

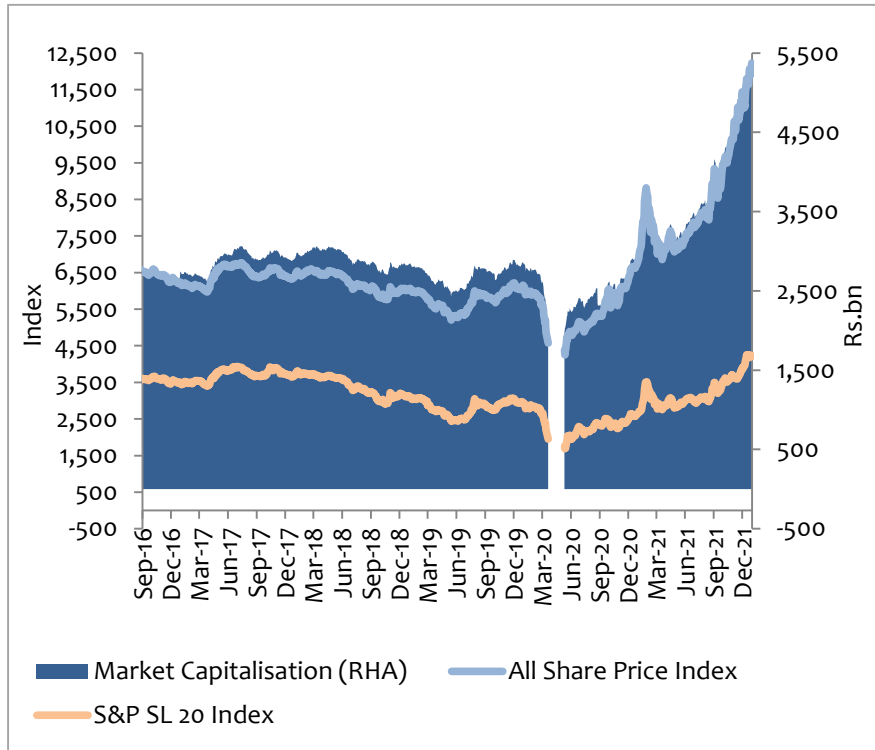


Source: Central Bank of Sri Lanka

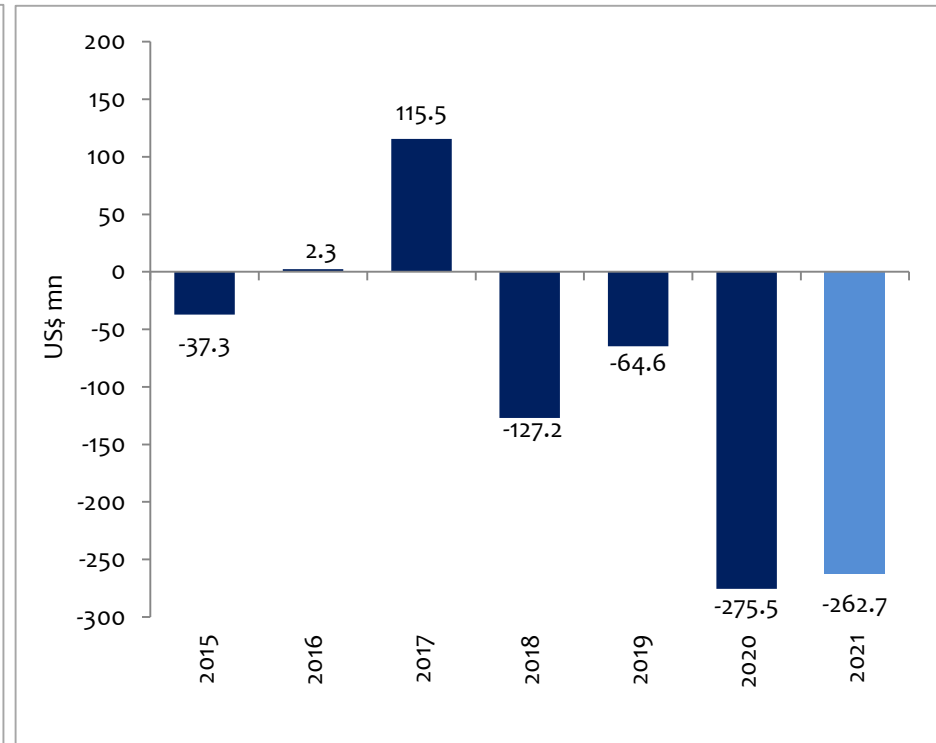


Stock Market Performance

Share Price Indices and Market Capitalisation (a)



Net Foreign Inflows to the Secondary Market



Source: Colombo Stock Exchange



(a) The CSE was not functioning during the period from 23 March 2020 to 6 May 2020 due to the prevailed conditions of the country with the spread of COVID-19



The set of graphs above summarises macroeconomic and financial market trends in Sri Lanka. These graphs do not contain source data. An extensive set of data is available on the CBSL website. Information for the Fourth quarter of 2021 is provisional.

