

# Sri Lanka: Macroeconomic Developments in Charts

---

Third Quarter 2019



Central Bank of Sri Lanka  
Economic Research Department

# Index

## Real Sector and Inflation

[Real GDP Growth \(Annual /Quarterly\)](#)  
[Sectoral GDP Growth](#)  
[Per Capita GDP](#)  
[Index of Industrial Production \(IIP\)](#)  
[Unemployment](#)  
[Poverty](#)  
[CCPI based Inflation](#)  
[NCPI based Inflation](#)  
[Producer's Price Index \(PPI\)](#)

## External Sector

[Earnings from Merchandise Exports](#)  
[Expenditure from Merchandise Imports](#)  
[Trade Balance](#)  
[Tourism: Arrivals and Earnings](#)  
[Tourism: Monthly Arrivals](#)  
[Workers' Remittances](#)  
[Current Account Balance](#)  
[Foreign Direct Investment Flows](#)  
[Balance of Payment](#)  
[Gross Official Reserves](#)  
[Exchange Rate Movements](#)

## Fiscal Sector

[Government Revenue](#)  
[Government Expenditure](#)  
[Public Investment](#)  
[Budget Deficit](#)  
[Central Government Debt](#)

## Monetary Sector

[Reserve Money Growth and Money Multiplier](#)  
[Broad Money Growth](#)  
[Credit to the Private Sector](#)  
[Net Credit to Government](#)  
[Credit to Public Corporations](#)  
[Net Foreign Assets](#)  
[Policy Interest Rates and Overnight Money Market Rates](#)  
[Treasury Bill Yields and the Yield Curve](#)  
[Market Interest Rates](#)

## Financial Sector

[Banking Sector Indicators \(i\)](#)  
[Banking Sector Indicators \(ii\)](#)  
[Banking Density](#)  
[Non-Bank Financial Sector Indicators \(i\)](#)  
[Non-Bank Financial Sector Indicators \(ii\)](#)  
[Stock Market Performance](#)

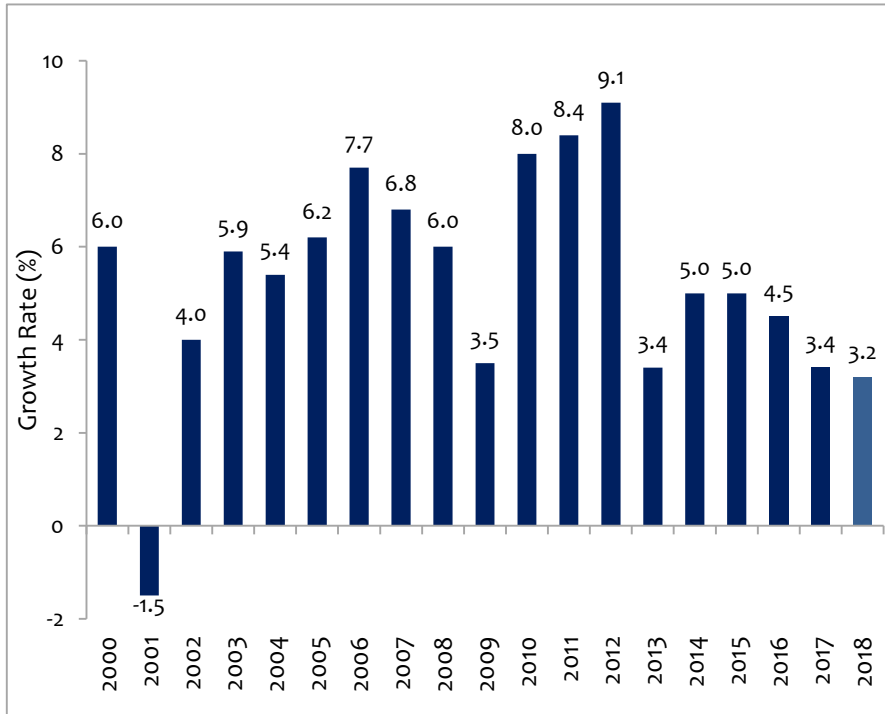


# Real Sector and Inflation

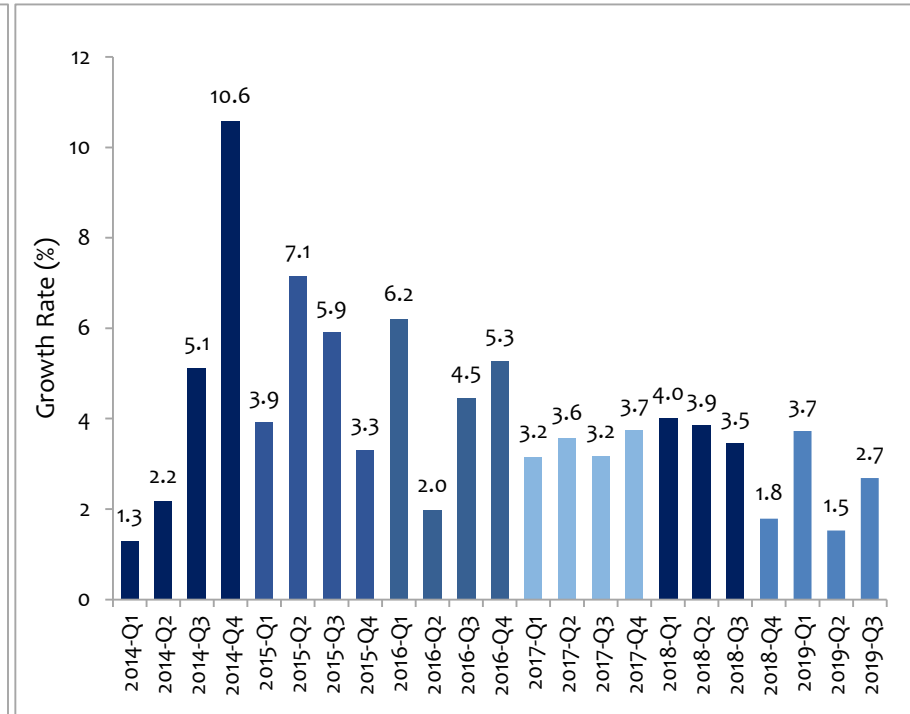


# Real GDP Growth

## Annual Real GDP Growth

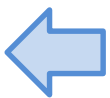


## Quarterly Real GDP Growth



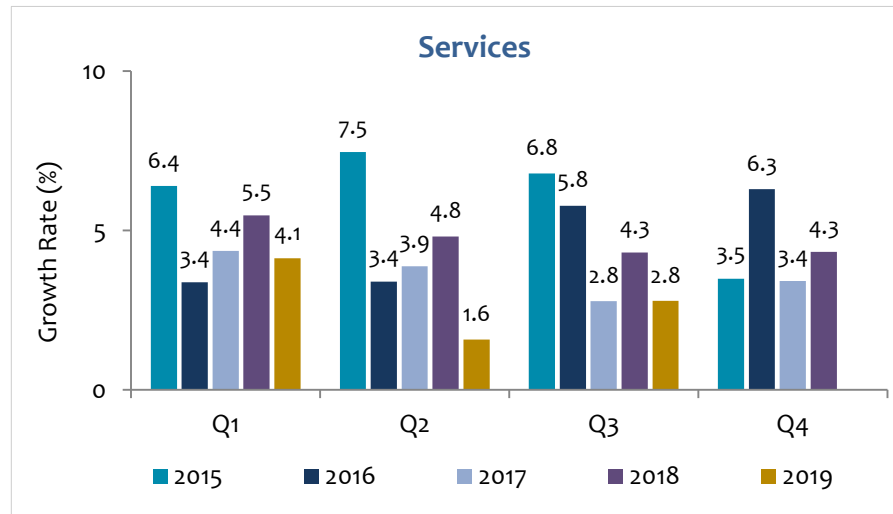
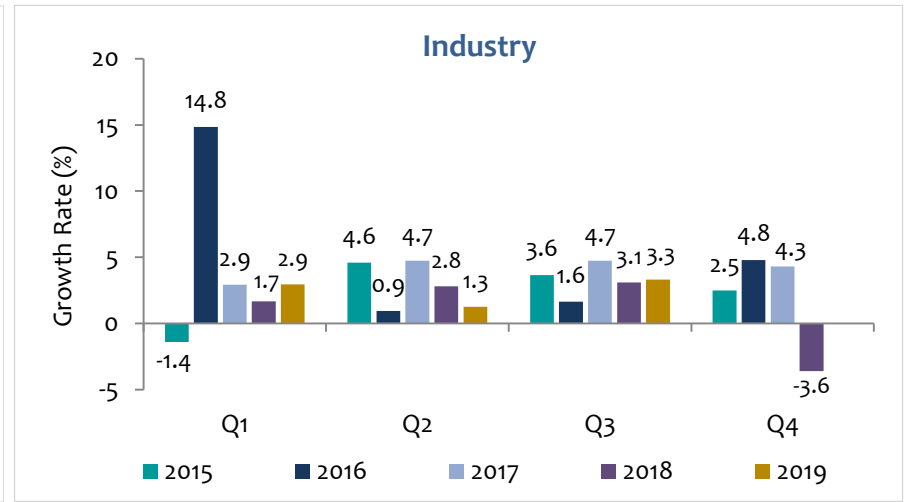
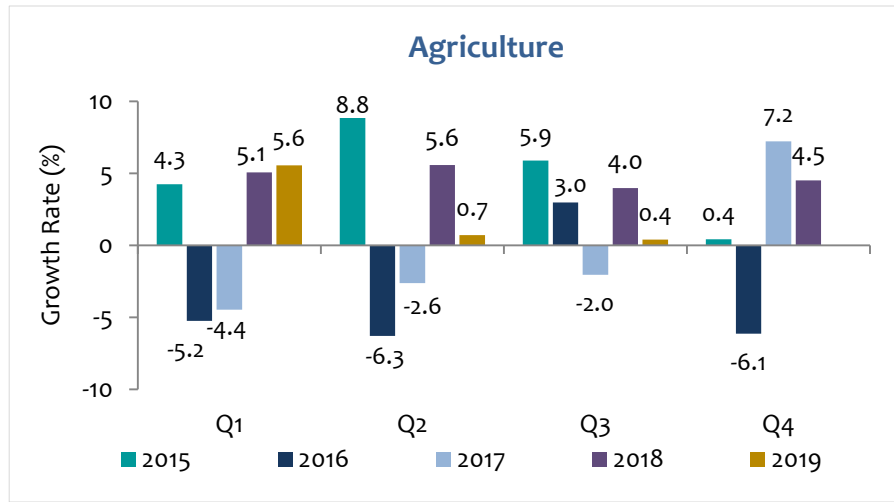
Source: Department of Census and Statistics

Note: Data from 2011 are based on the base year 2010 GDP estimates of Department of Census and Statistics  
Data are based on latest GDP estimates made available on 18 December 2019 by the Department of Census and Statistics

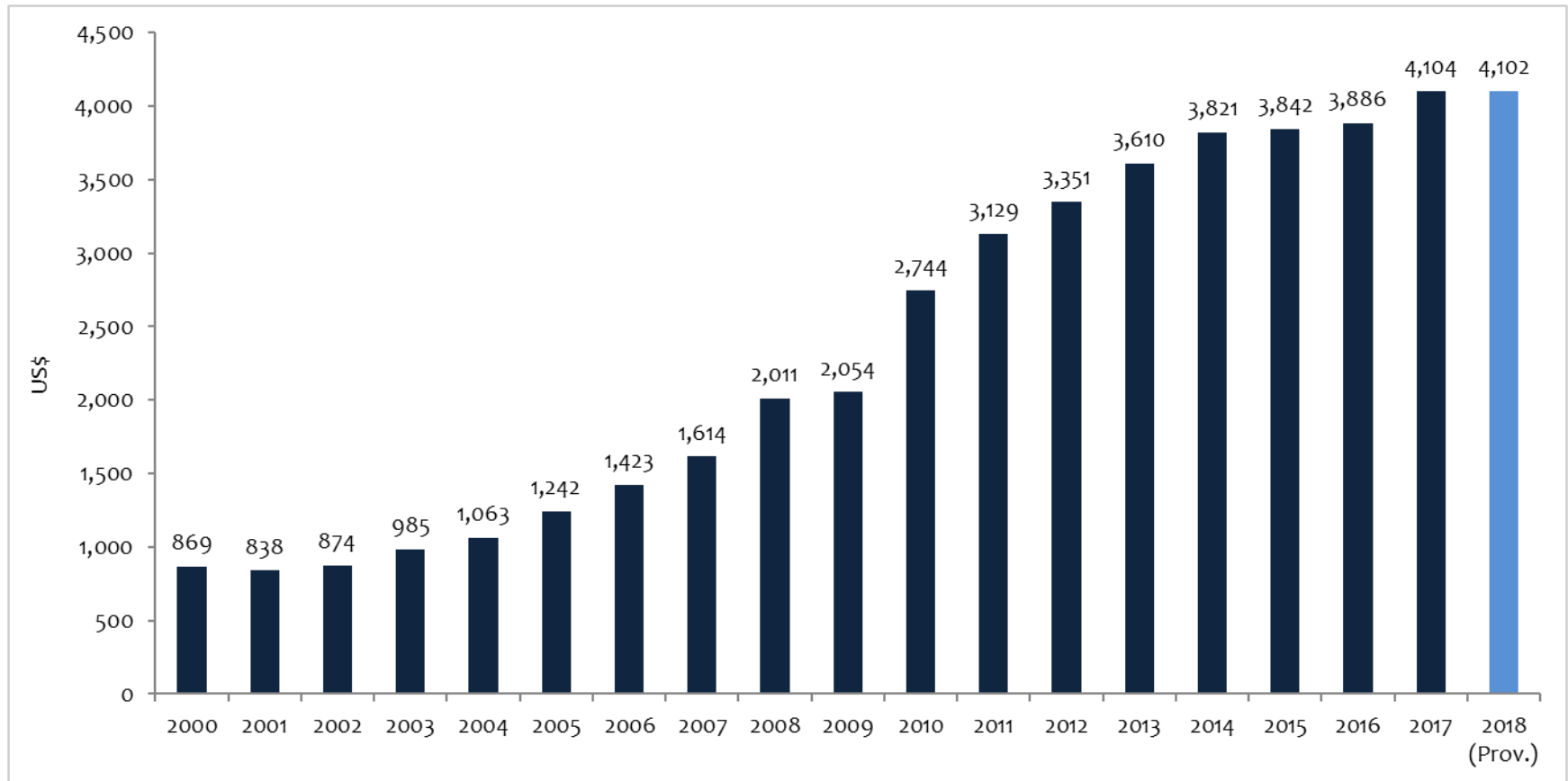


Central Bank of Sri Lanka  
Economic Research Department

# Sectoral GDP Growth



# Per Capita GDP

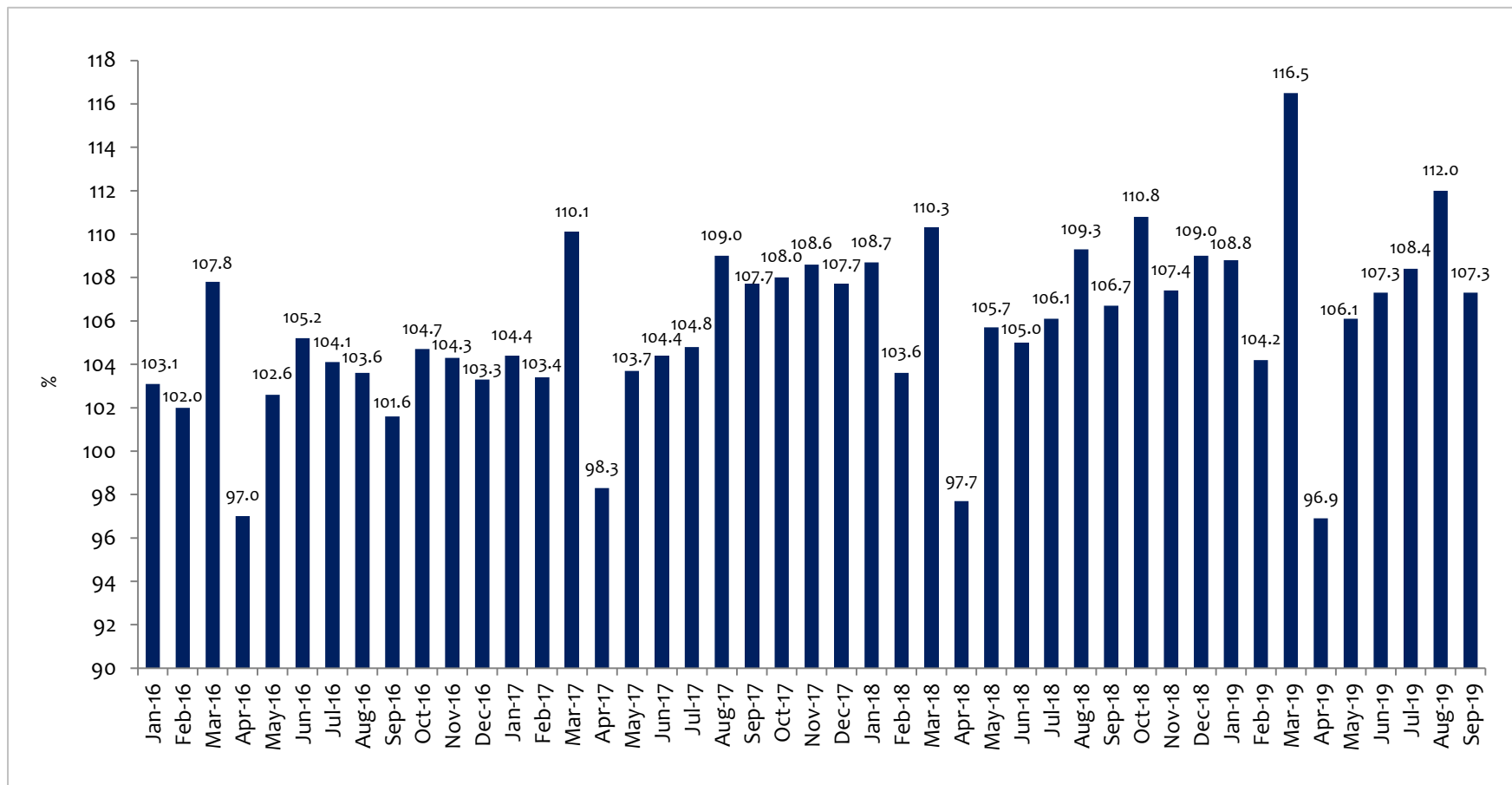


Source: Department of Census and Statistics  
Central Bank of Sri Lanka

Note: Data from 2011 are based on the base year 2010 GDP estimates of Department of Census and Statistics and updated with latest population data  
Data are based on latest GDP estimates made available on 19 March 2019 by the Department of Census and Statistics



# Index of Industrial Production (IIP)\*

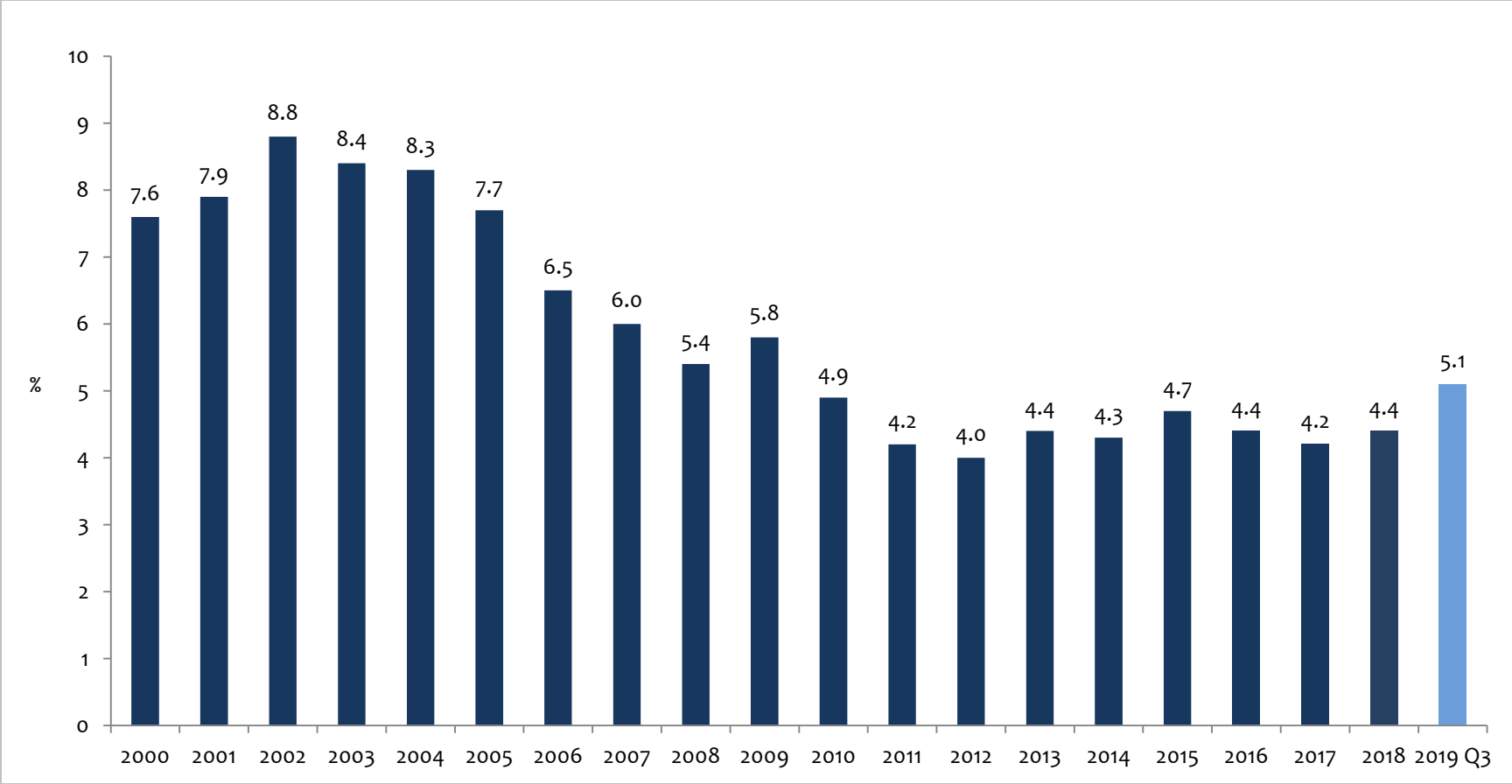


Source: Department of Census and Statistics

\*Based on the Index of Industrial Production (IIP,2015=100)



# Unemployment

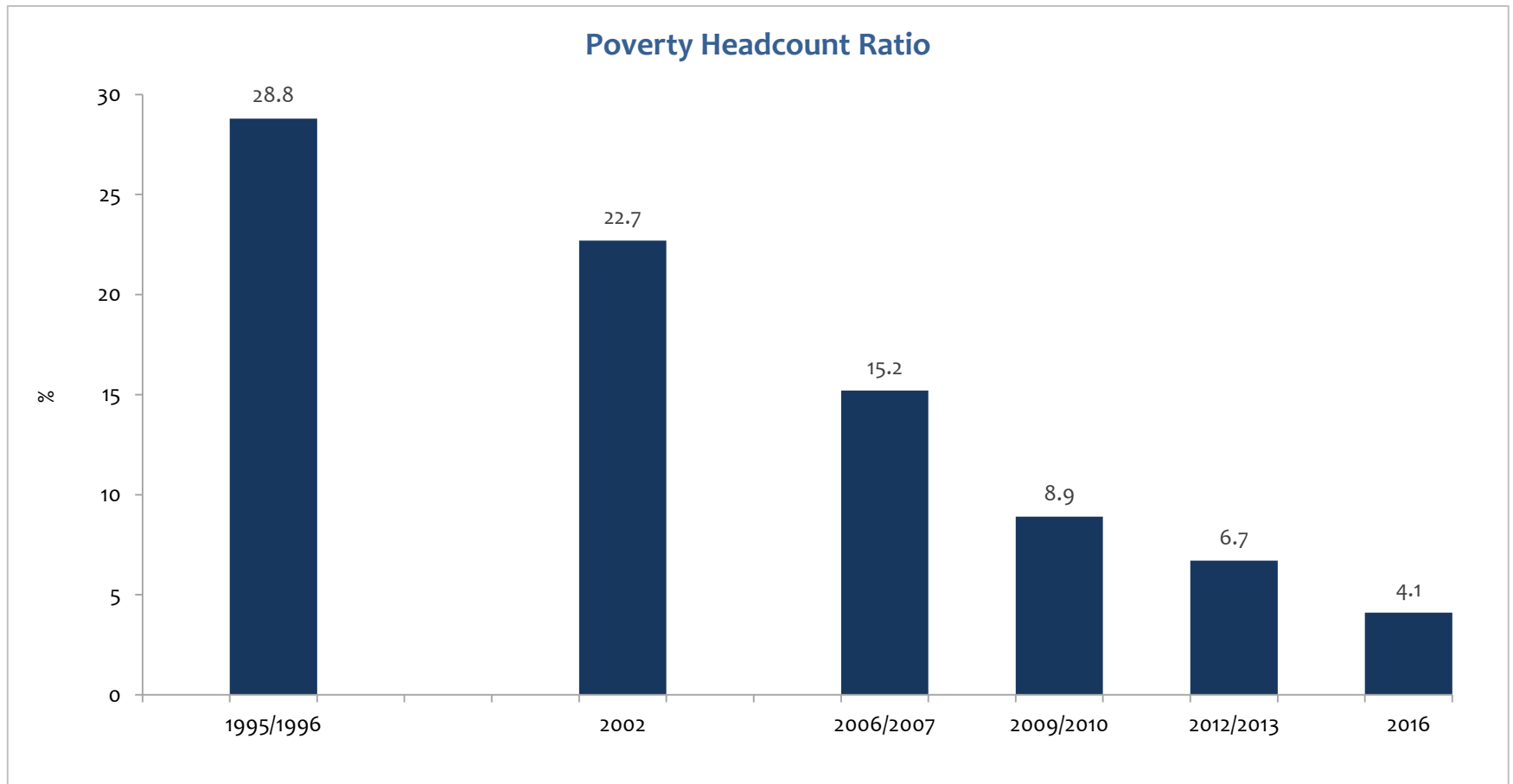


Source: Department of Census and Statistics

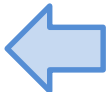




# Poverty

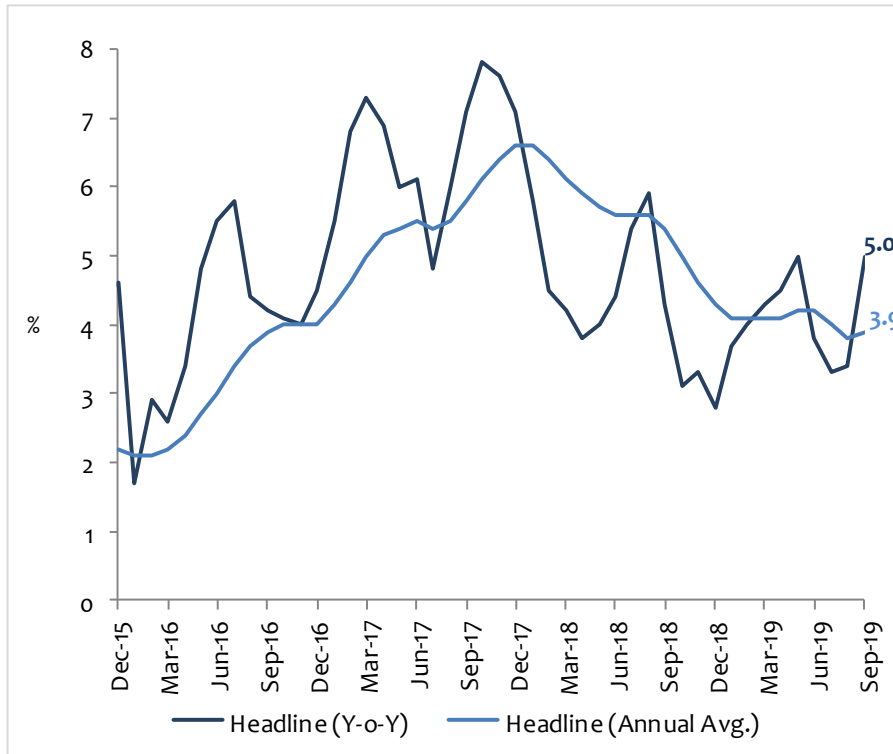


Source: Department of Census and Statistics

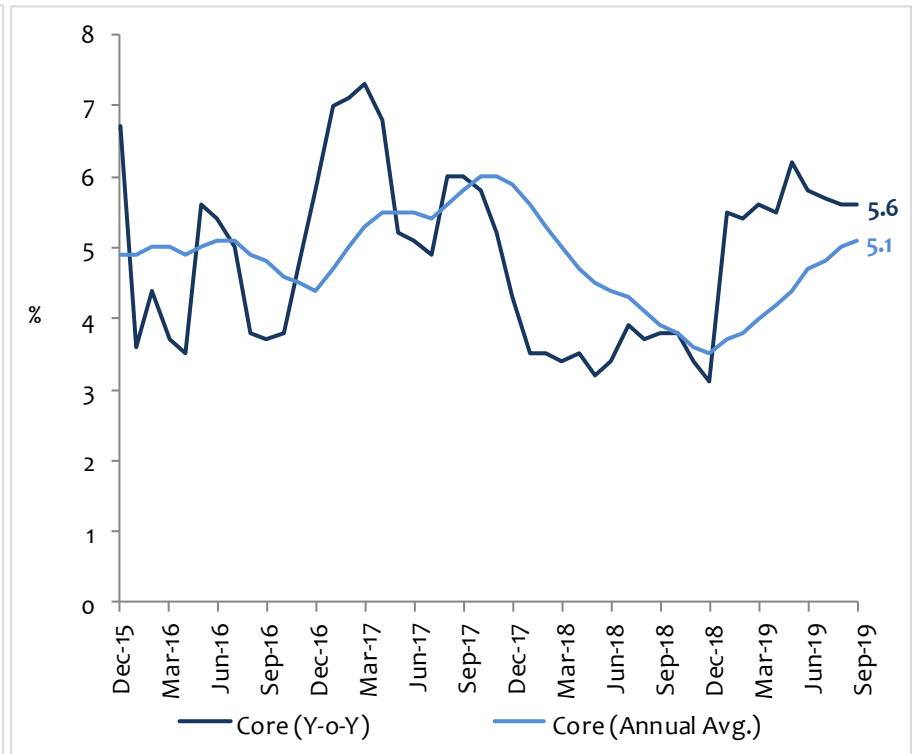


# CCPI based Inflation\*

## CCPI based Headline Inflation



## CCPI based Core Inflation\*\*



Source: Department of Census and Statistics

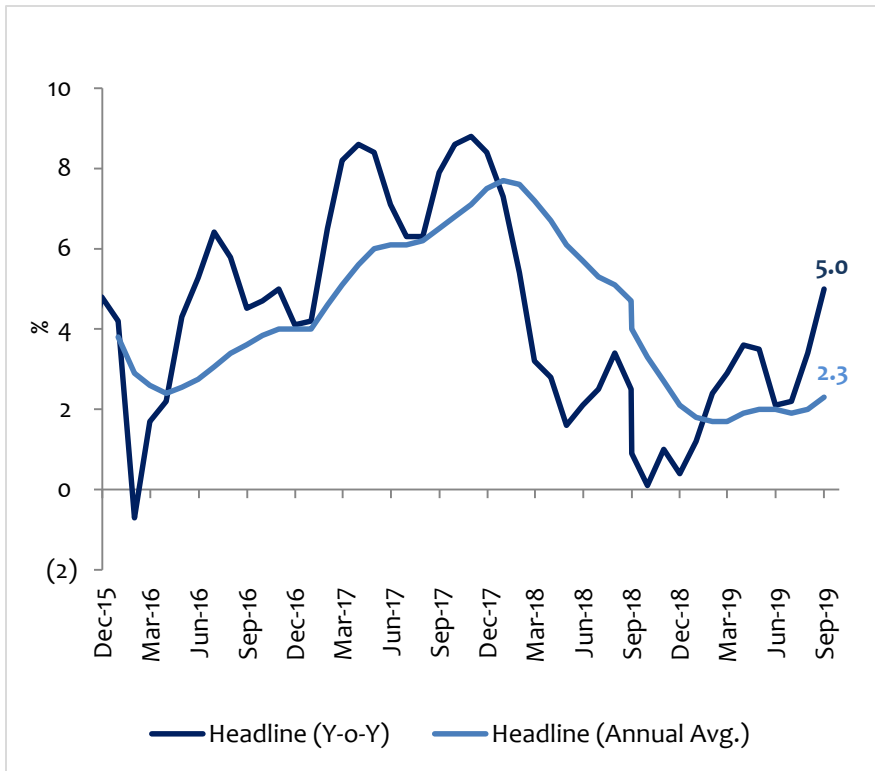
\*Based on the Colombo Consumer Price Index (CCPI, 2013=100)

\*\*Core Inflation is calculated by excluding volatile food, energy and transport categories from the CCPI

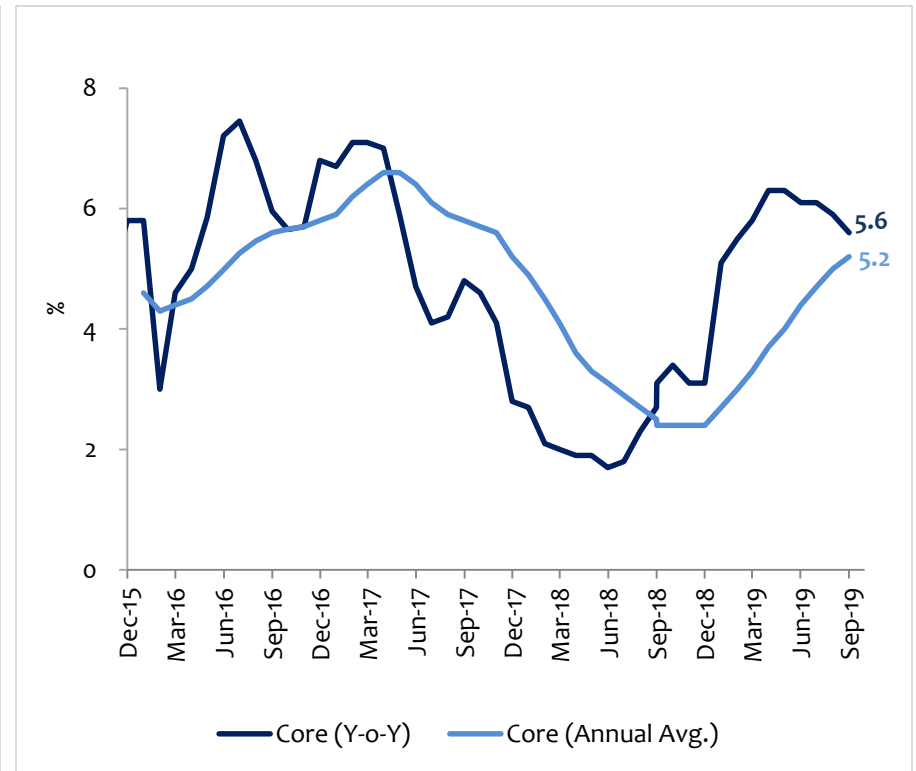


# NCPI based Inflation\*

## NCPI based Headline Inflation



## NCPI based Core Inflation\*\*



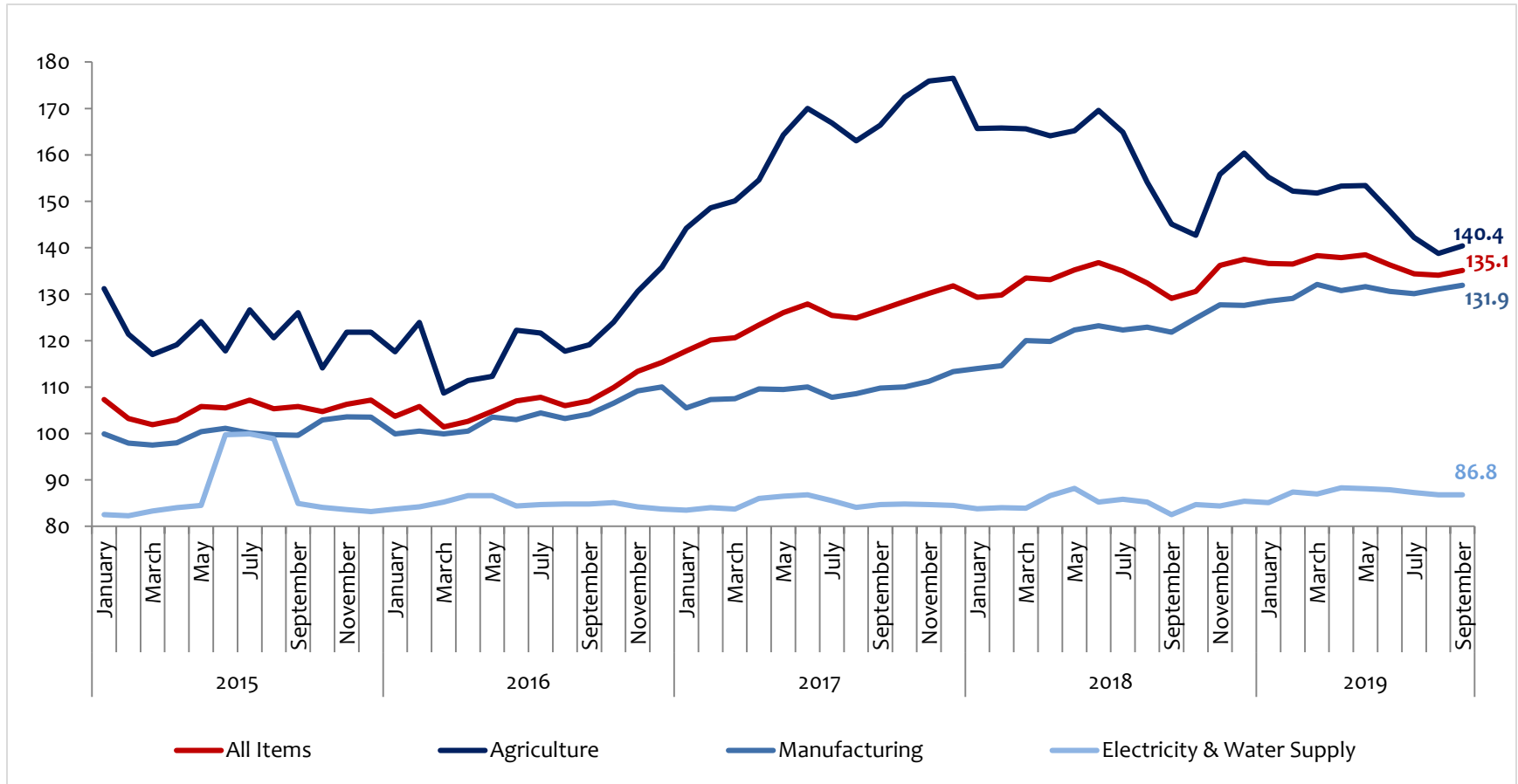
Source: Department of Census and Statistics

\*Based on the National Consumer Price Index (2013=100)

\*\*Core Inflation is calculated by excluding volatile food, energy and transport categories from the NCPI



# Producer's Price Index (PPI)\*

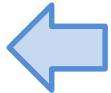


Source: Department of Census and Statistics

\*Based on the Producer's Price Index (PPI, 2013 Q4=100)

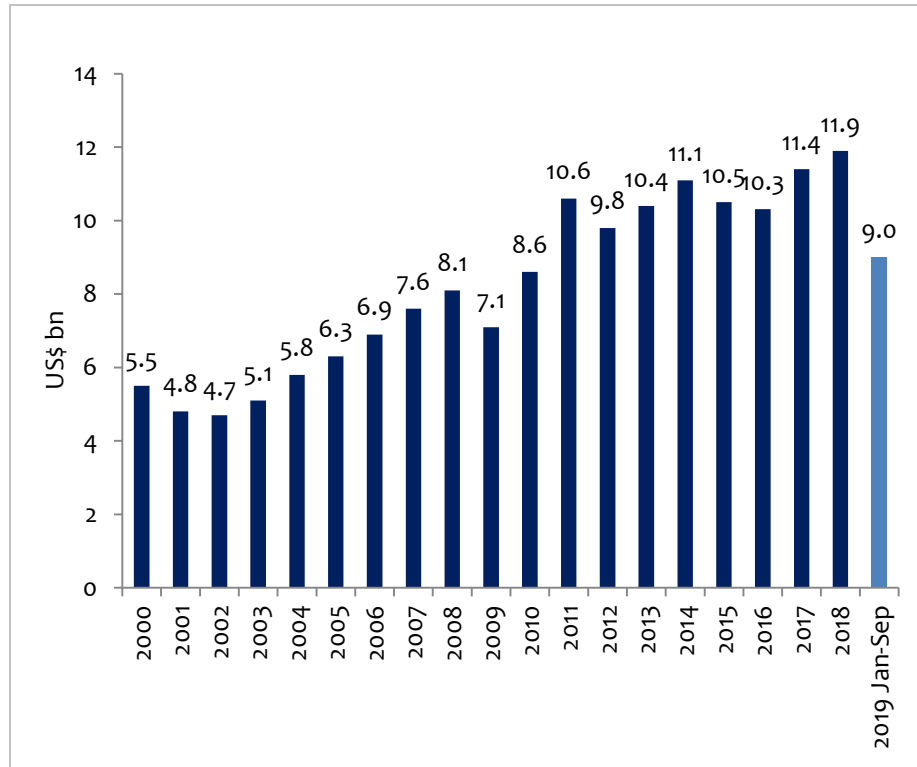


# External Sector

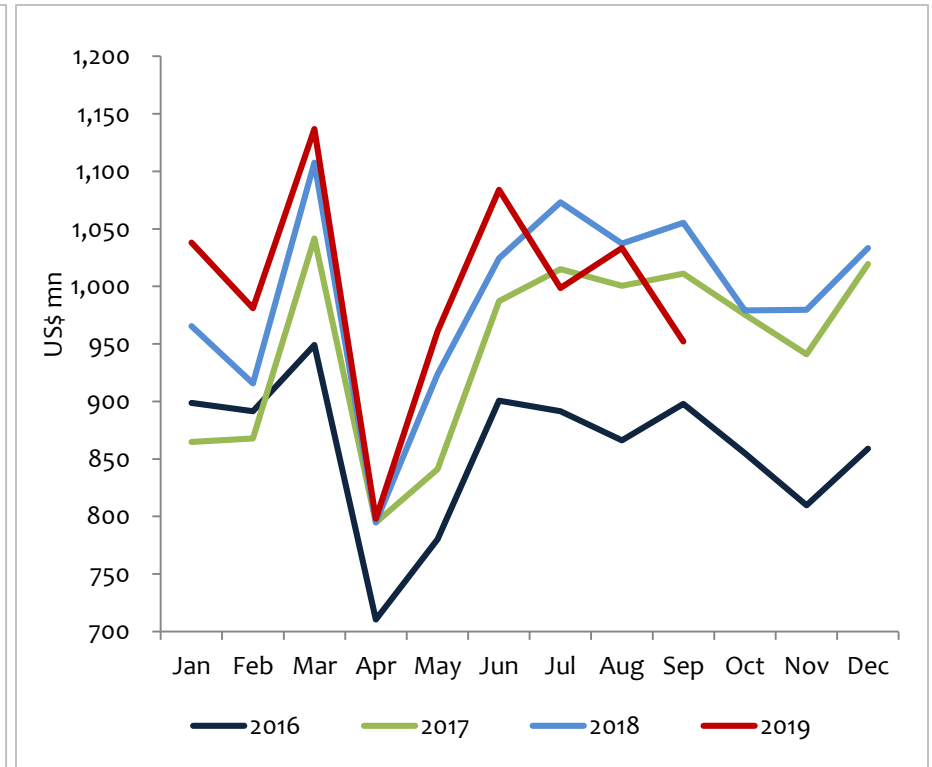


# Earnings from Merchandise Exports

## Merchandise Exports - Annual



## Merchandise Exports - Monthly

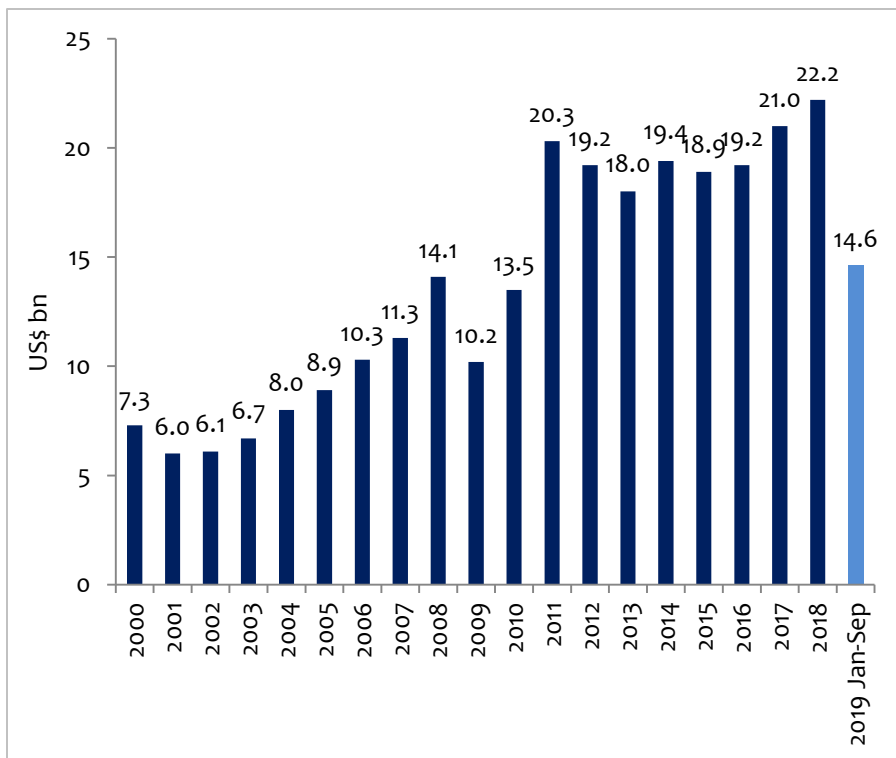


Source: Central Bank of Sri Lanka and Sri Lanka Customs

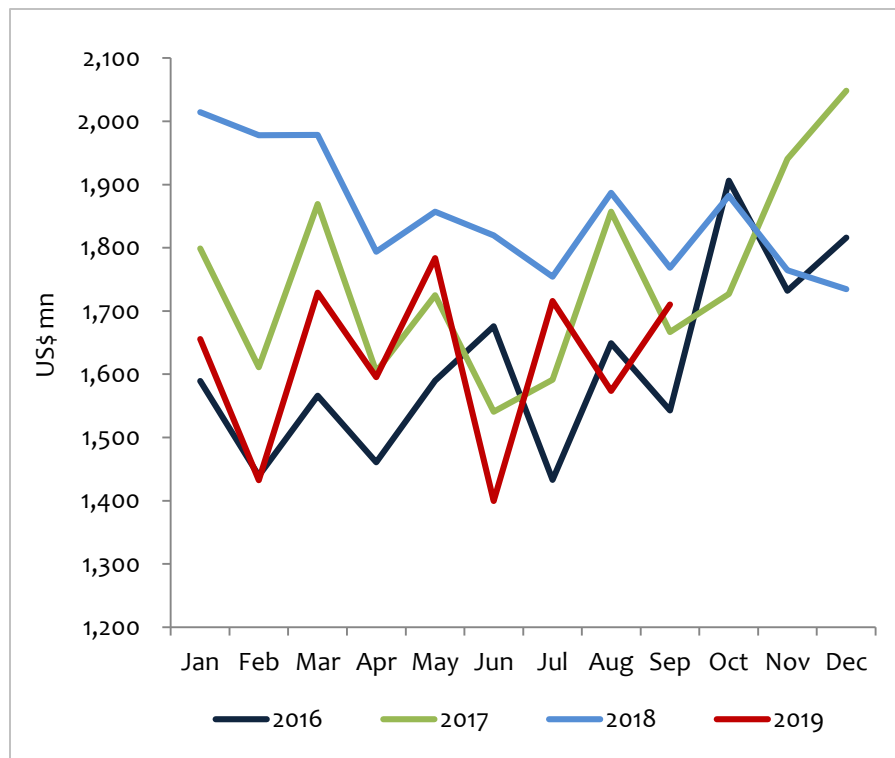


# Expenditure on Merchandise Imports

## Merchandise Imports - Annual



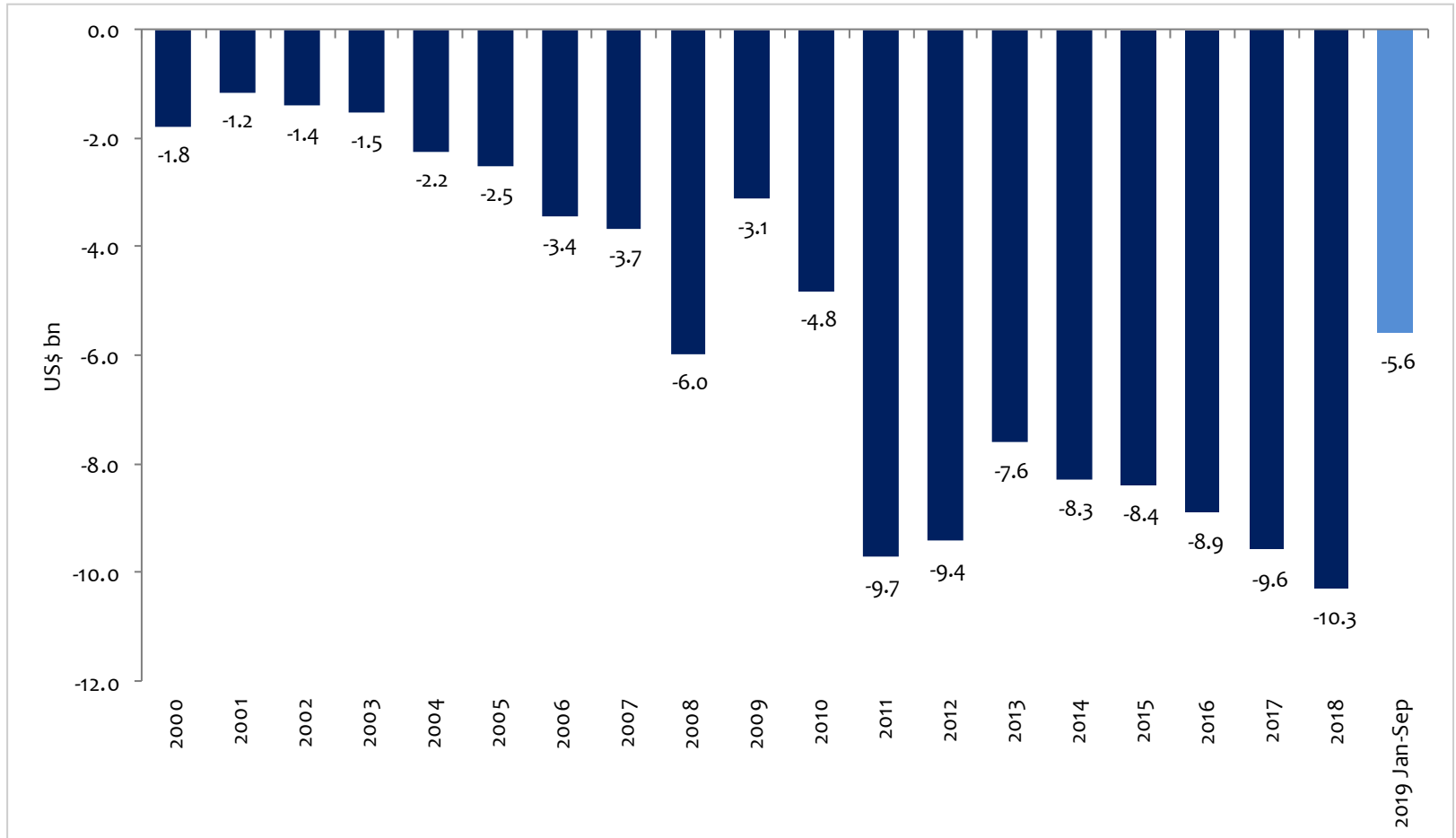
## Merchandise Imports - Monthly



Source: Central Bank of Sri Lanka and Sri Lanka Customs



# Trade Balance



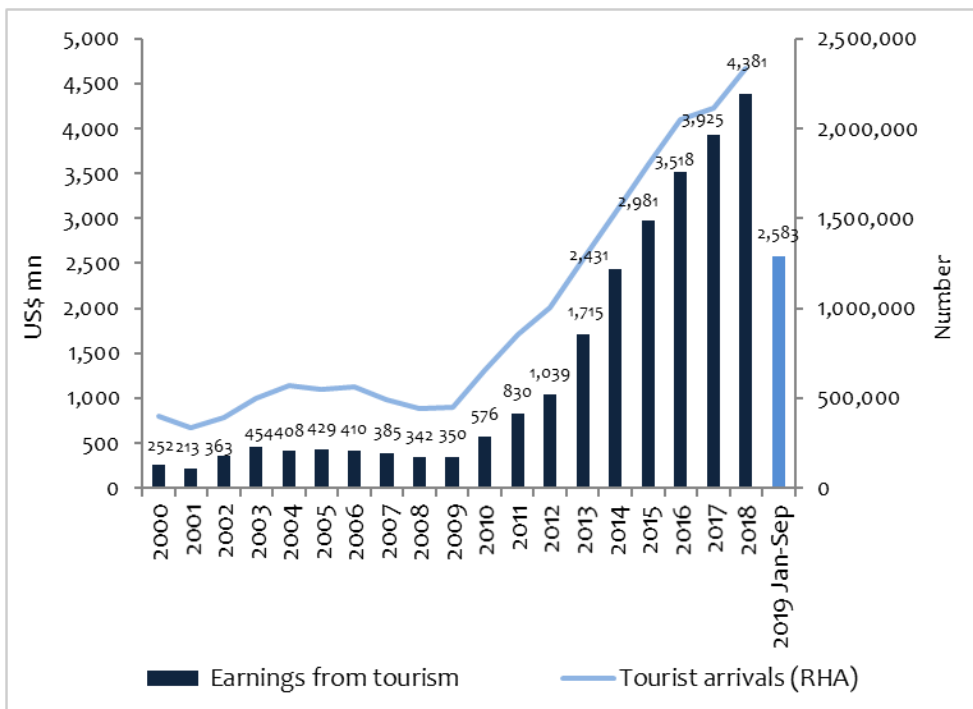
Source: Central Bank of Sri Lanka





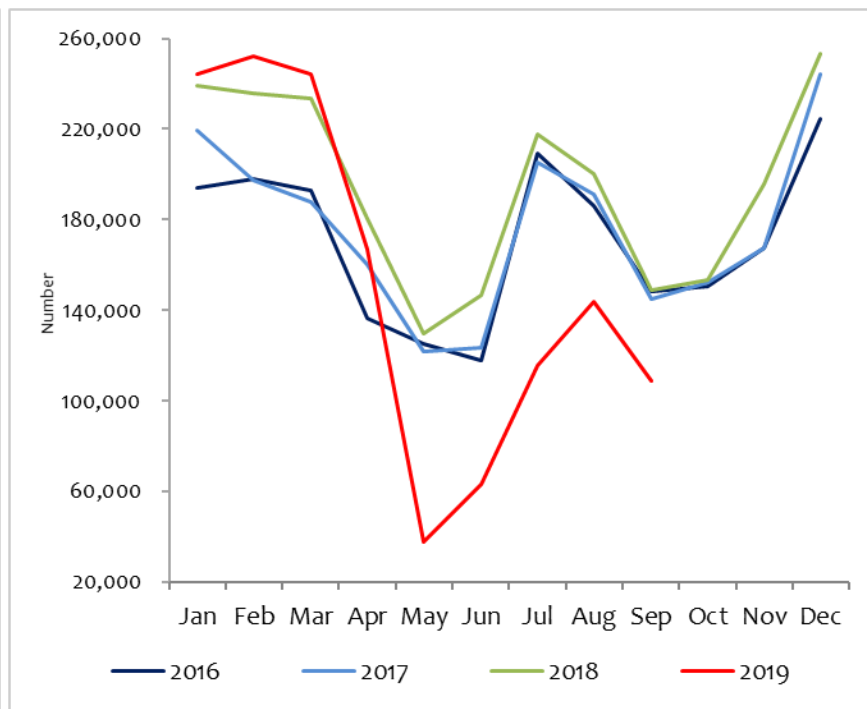
# Tourism

## Arrivals and Earnings



Source: Central Bank of Sri Lanka and Sri Lanka Tourist Development Authority (SLTDA)

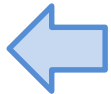
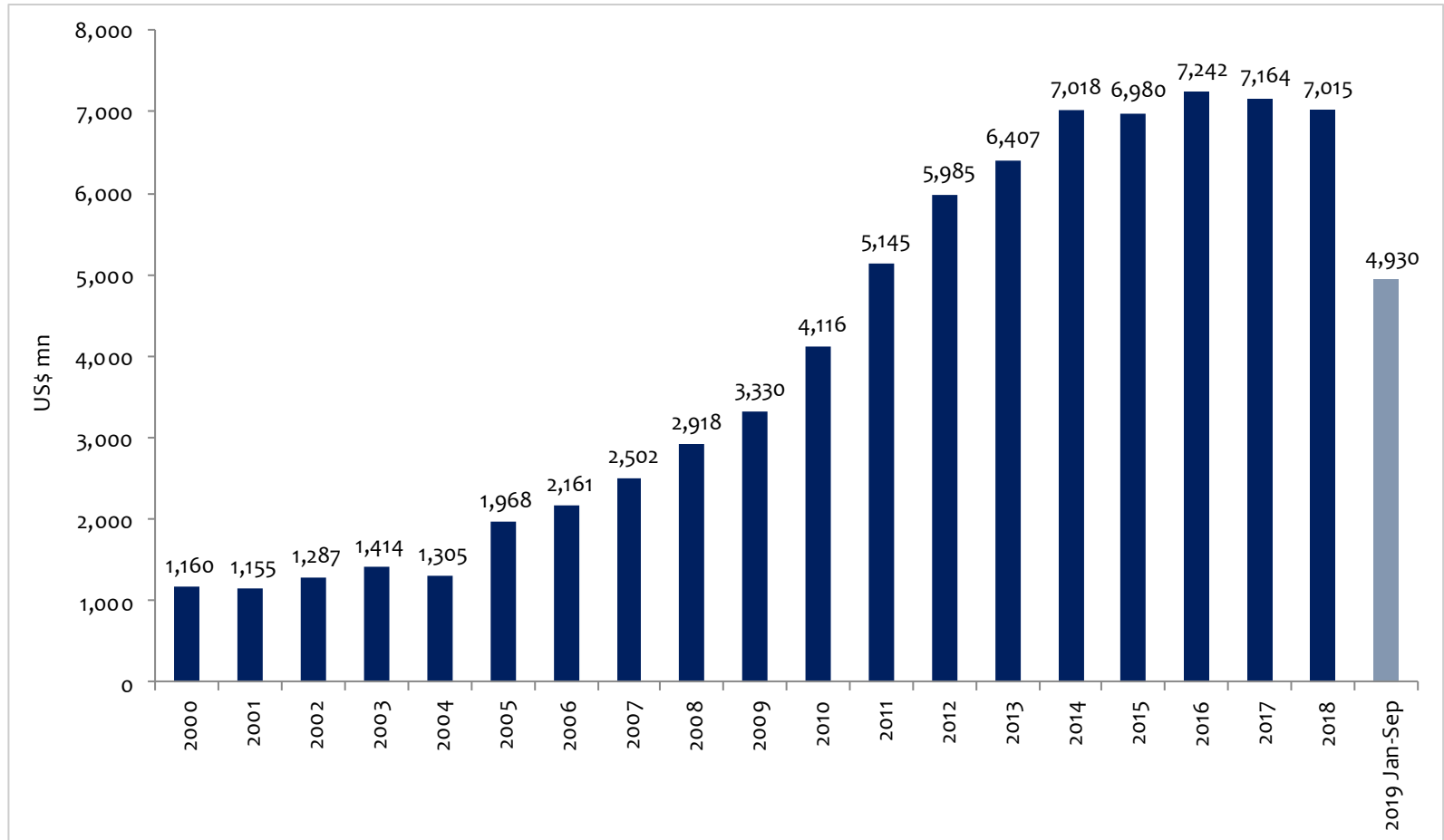
## Monthly Arrivals



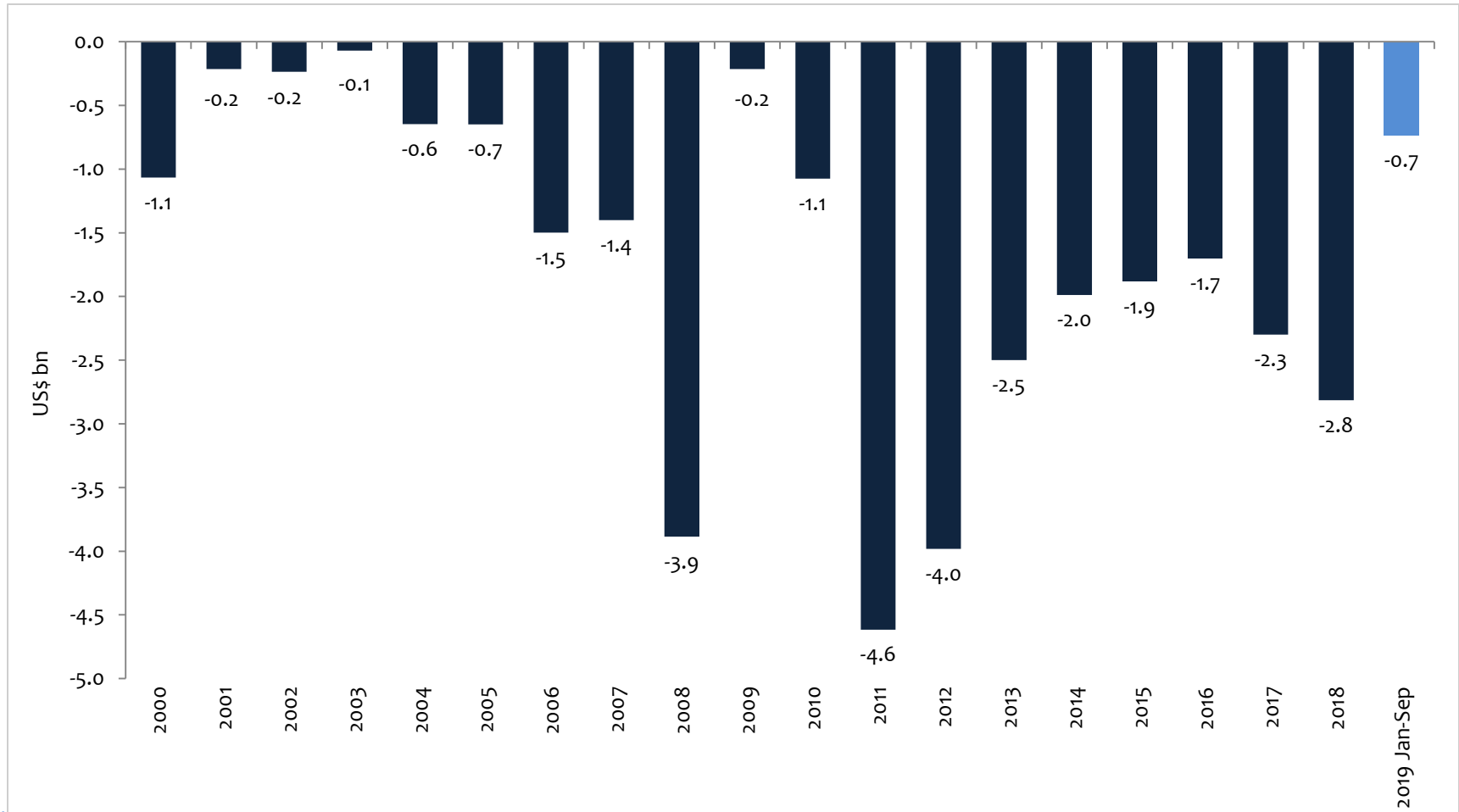
Source: SLTDA



# Workers' Remittances



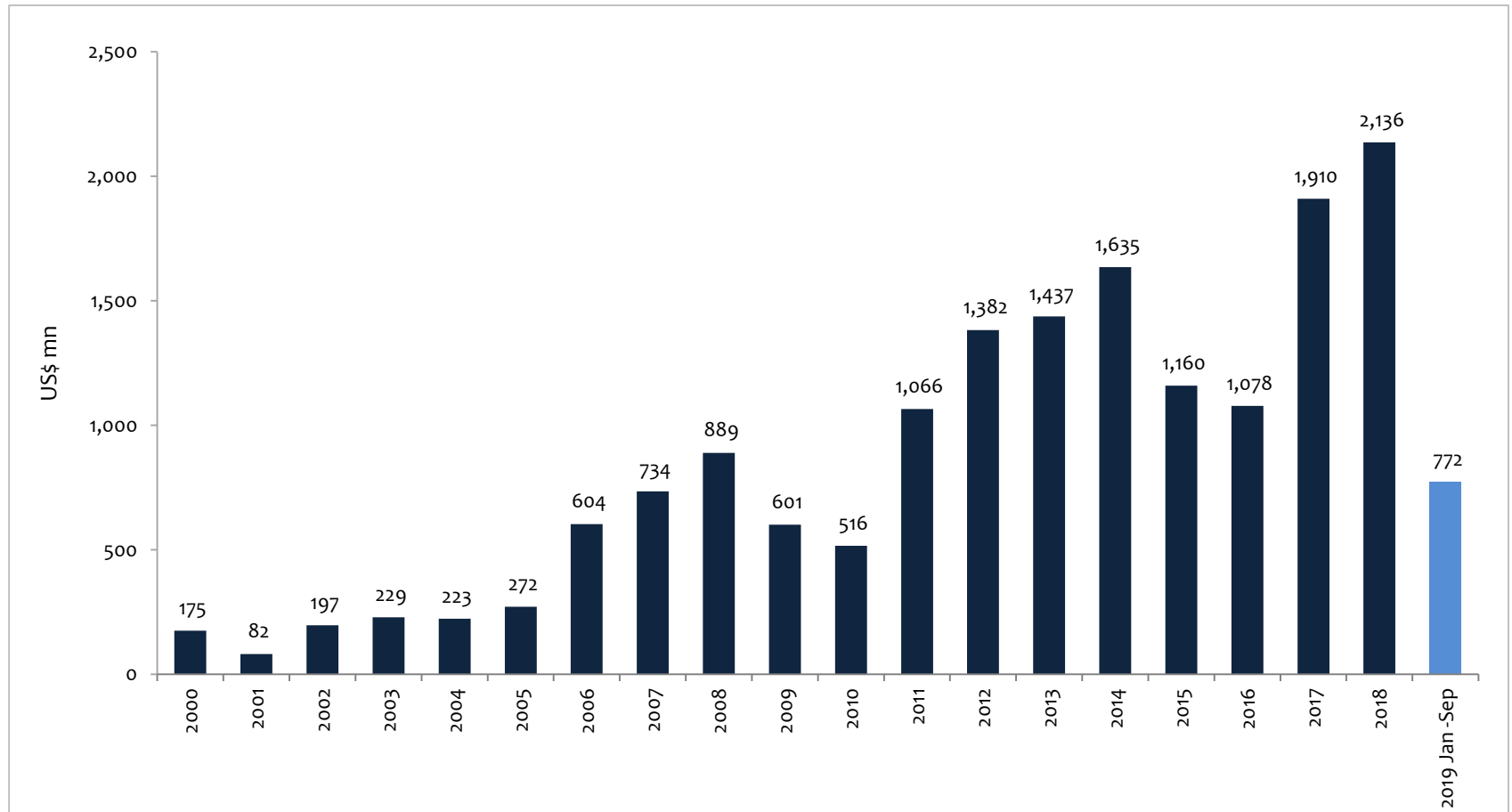
# Current Account Balance



Source: Central Bank of Sri Lanka



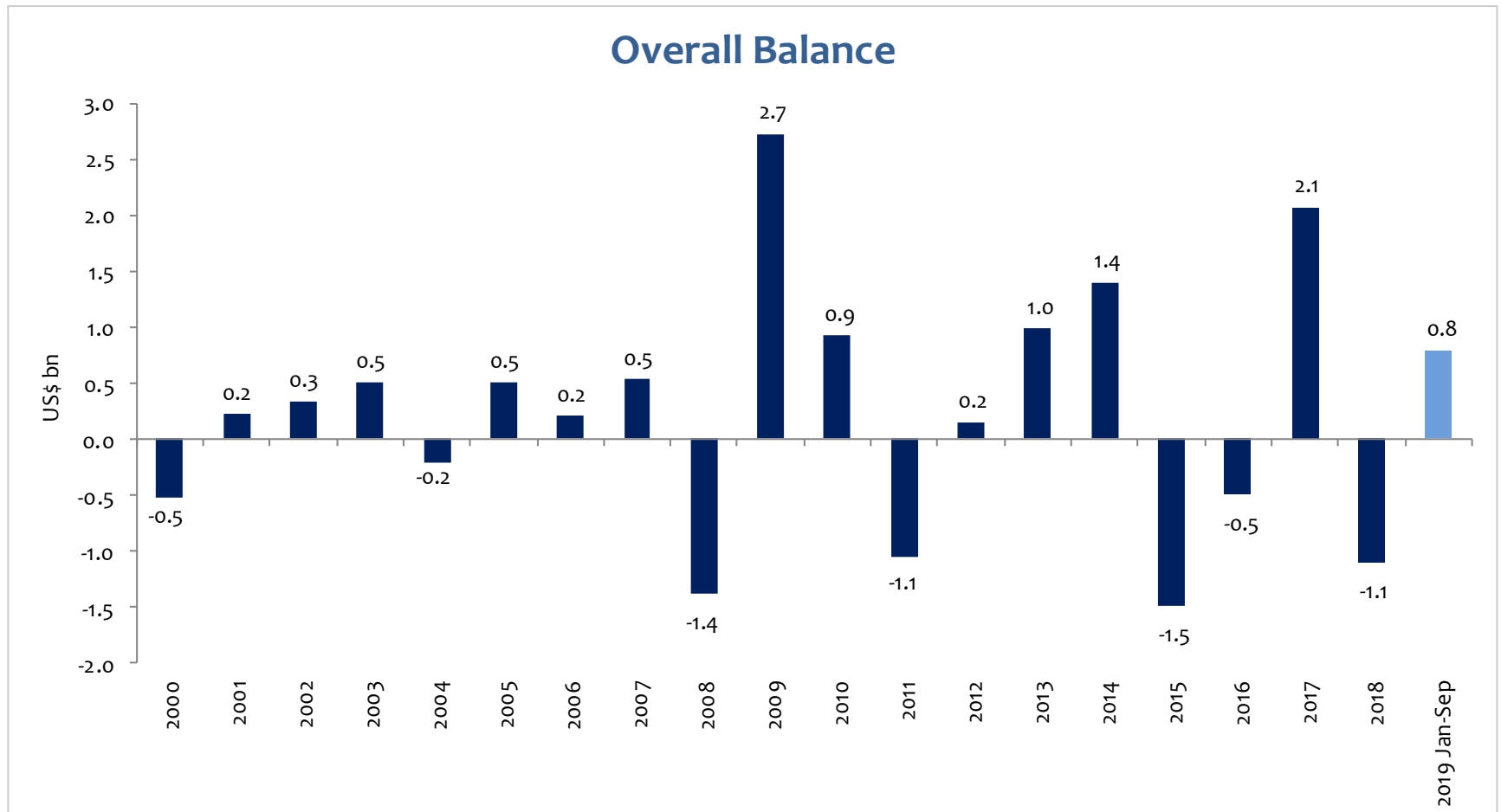
# Foreign Direct Investment Inflows



Source: Central Bank of Sri Lanka,  
Board of Investment and Colombo Stock Exchange



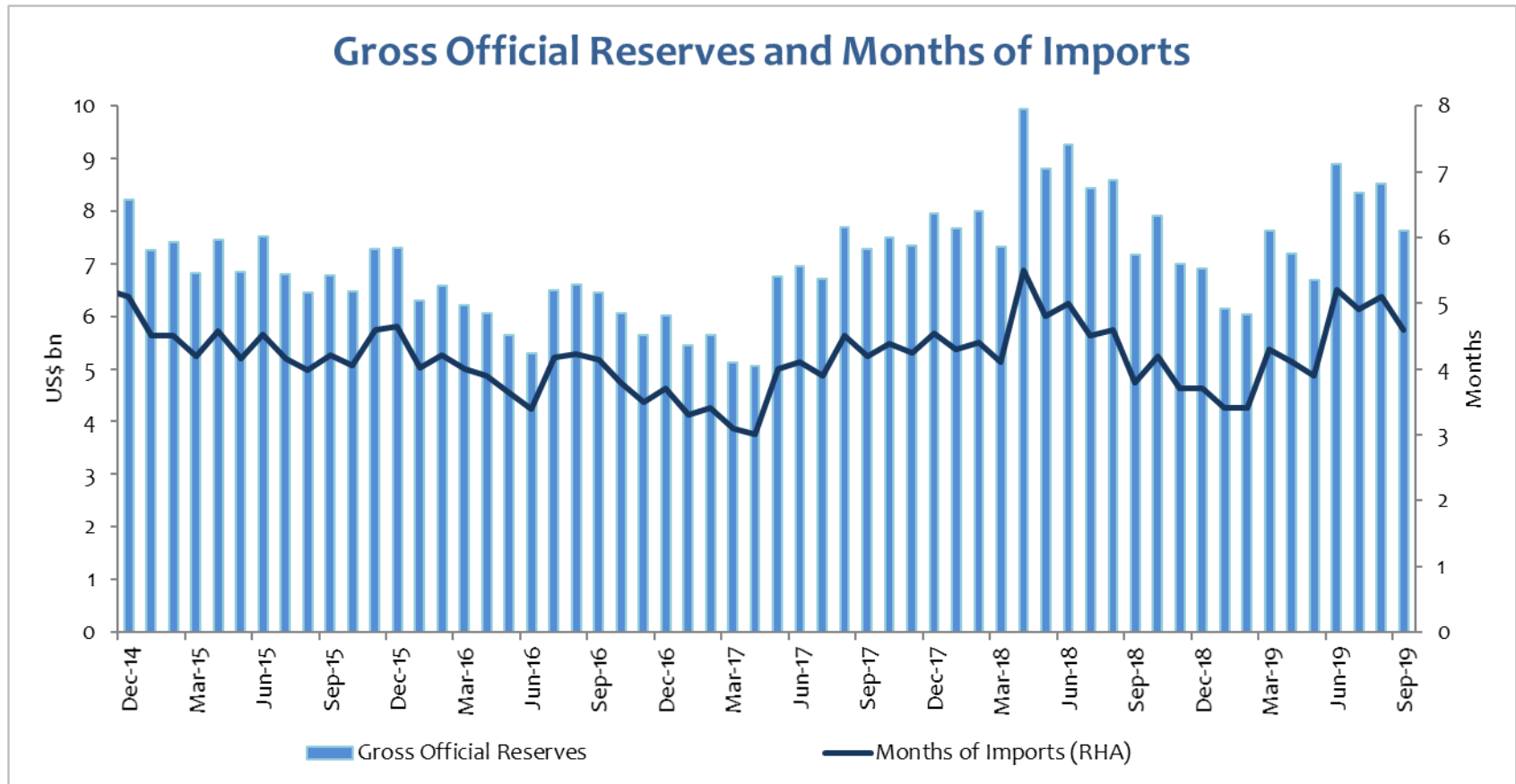
# Balance of Payments



Source: Central Bank of Sri Lanka



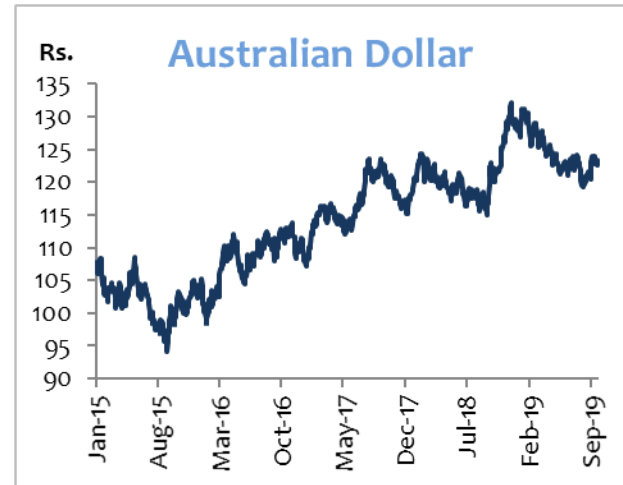
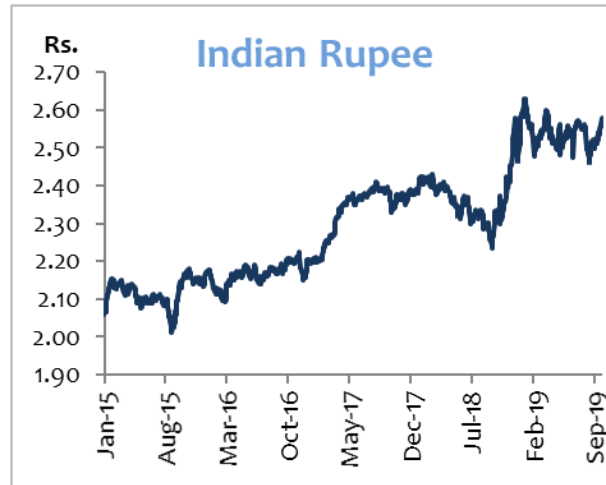
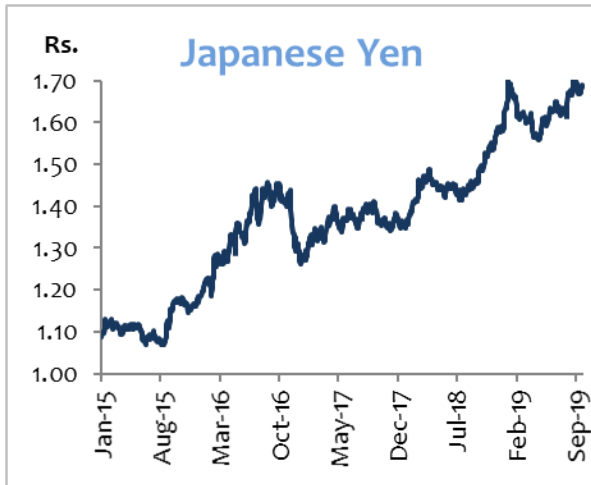
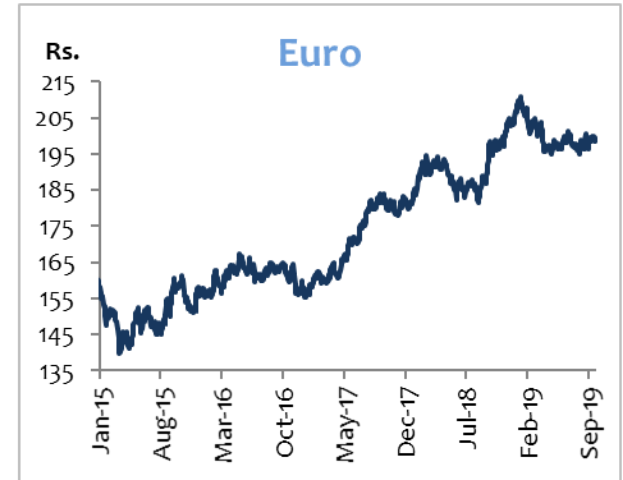
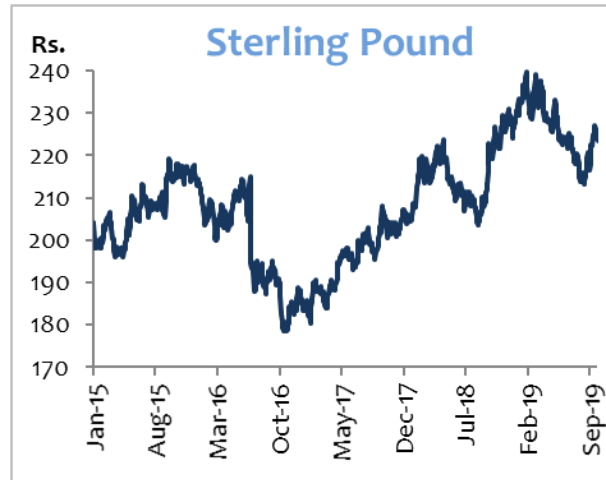
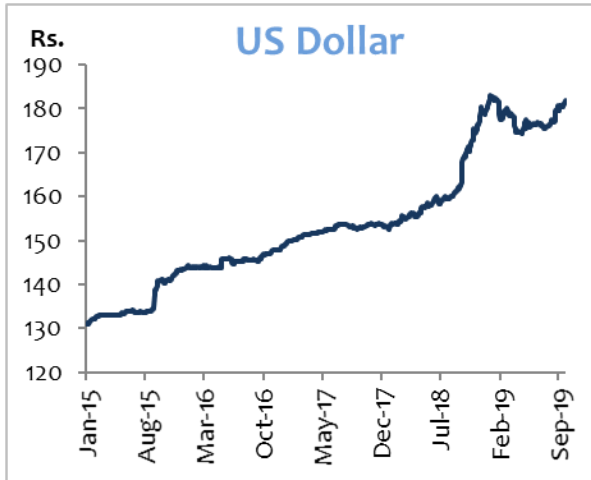
# Gross Official Reserves



Source: Central Bank of Sri Lanka



# Exchange Rate Movements



Source: Central Bank of Sri Lanka

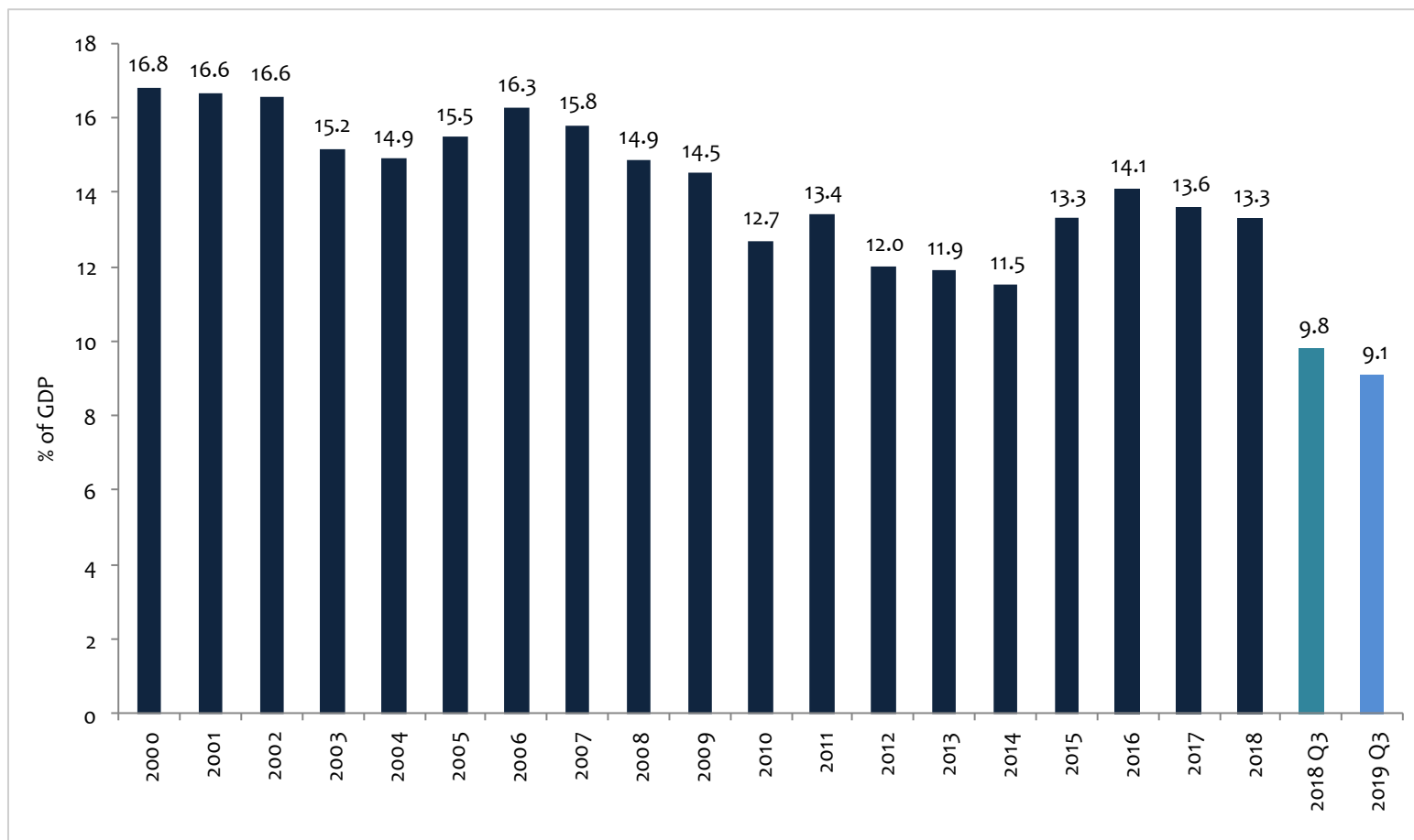


# Fiscal Sector





# Government Revenue



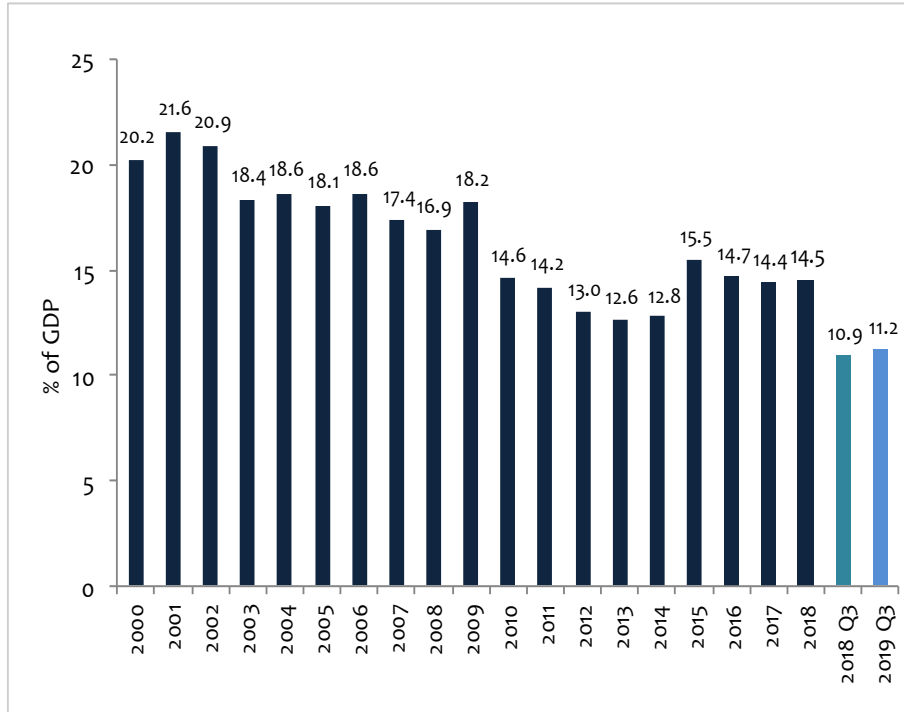
Source: Ministry of Finance, Economic and Policy Development

Note: Information from 2010 are based on rebased (2010 prices) estimates of GDP published by the Department of Census and Statistics  
Data (2016,2017) are based on latest GDP estimates made available on 19 June 2019 by the Department of Census and Statistics

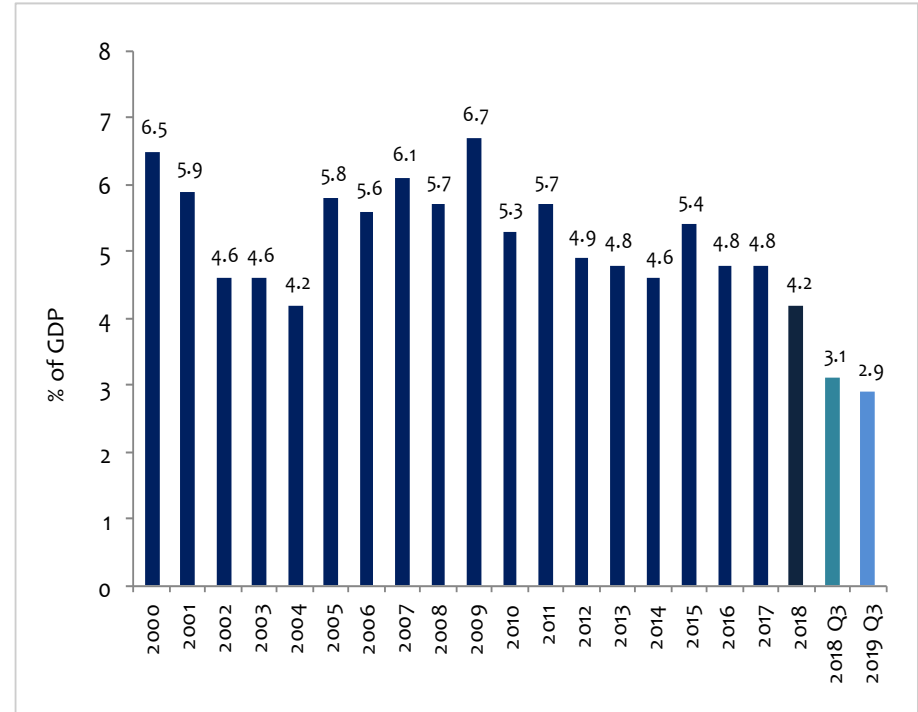


# Government Expenditure

## Recurrent Expenditure



## Capital and Net Lending

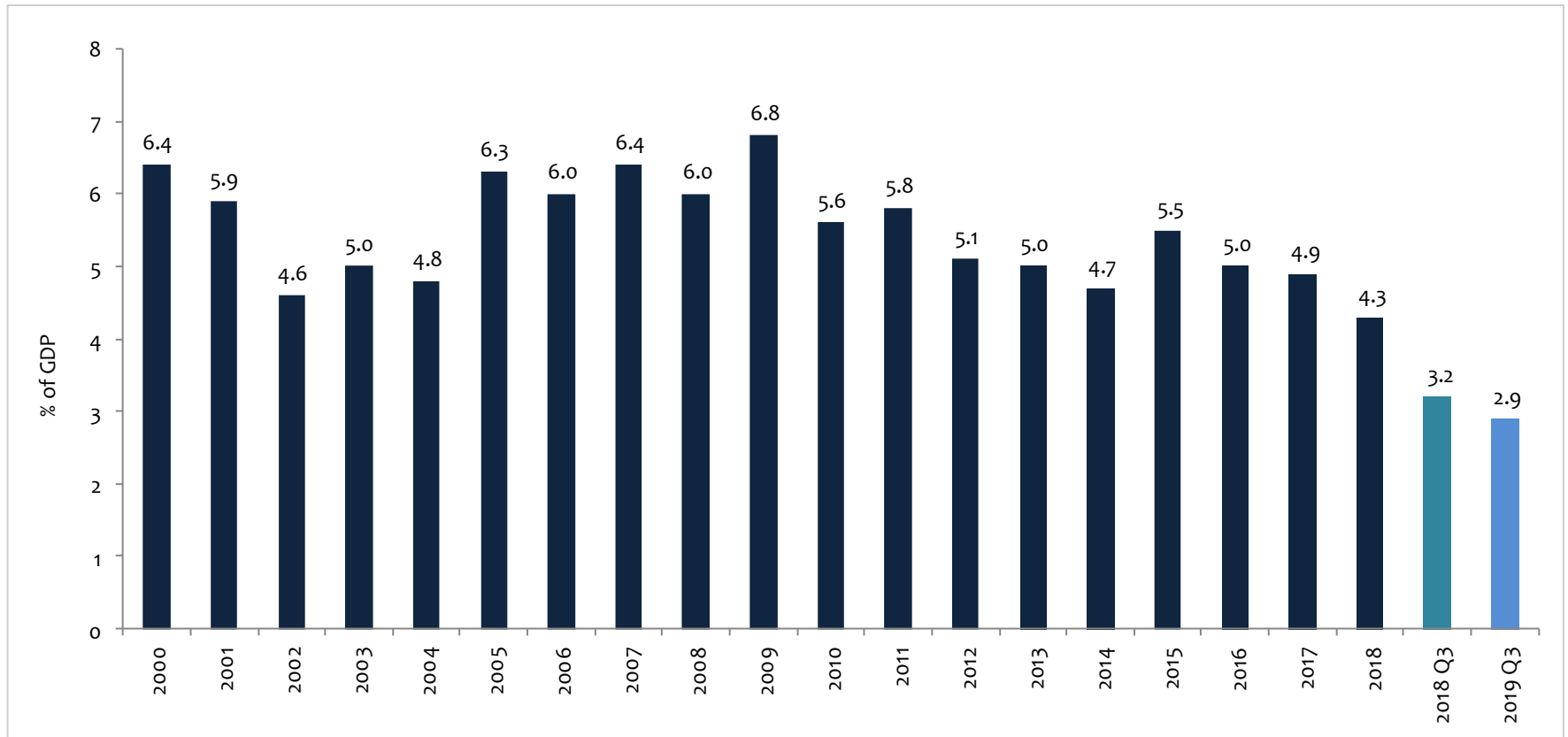


Source: Ministry of Finance, Economic and Policy Development

Note: Information from 2010 are based on rebased (2010 prices) estimates of GDP published by the Department of Census and Statistics  
Data (2016,2017) are based on latest GDP estimates made available on 19 June 2019 by the Department of Census and Statistics



# Public Investment

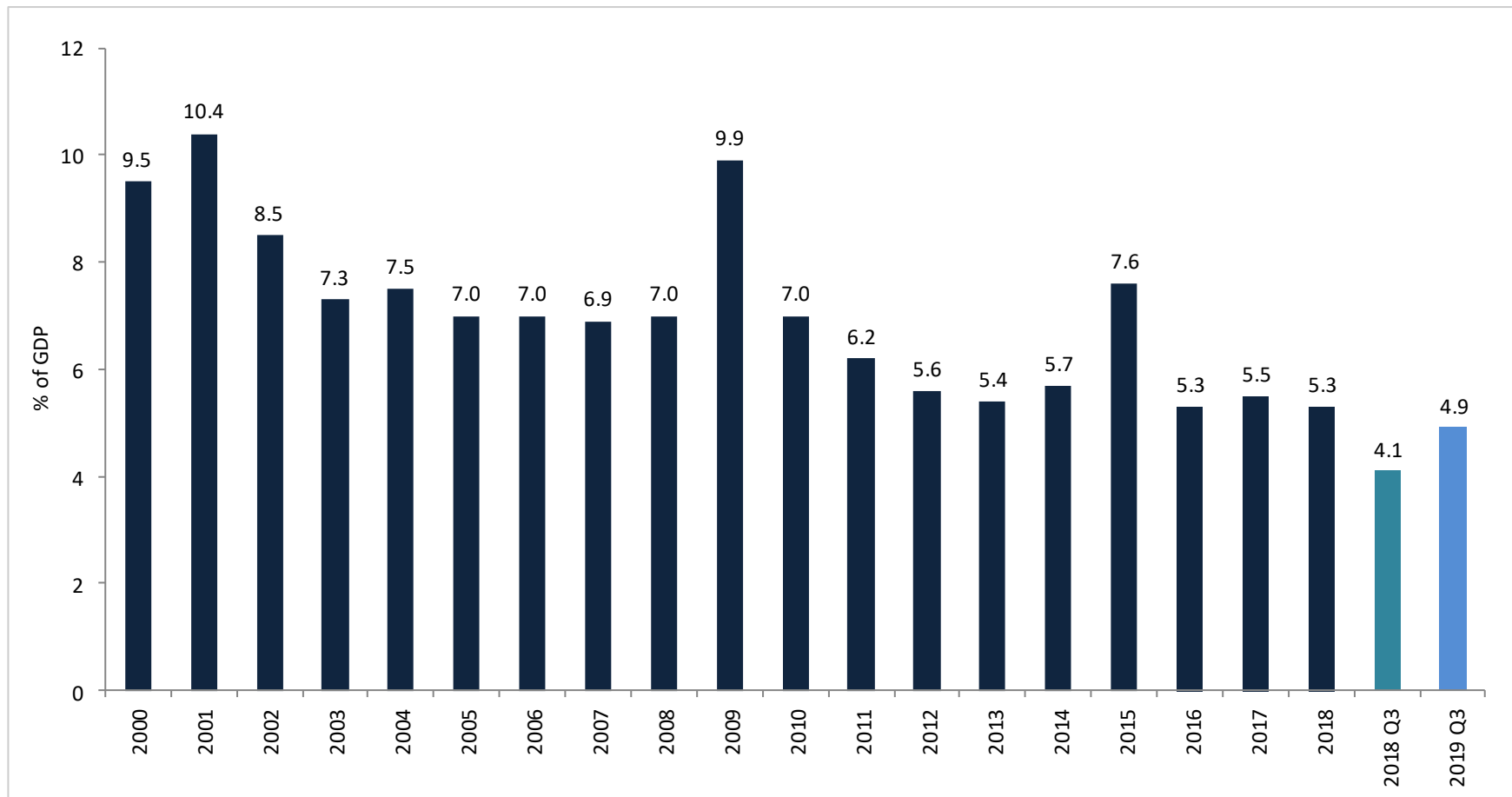


Source: Ministry of Finance, Economic and Policy Development

Note: Information from 2010 are based on rebased (2010 prices) estimates of GDP published by the Department of Census and Statistics  
Data (2016,2017) are based on latest GDP estimates made available on 19 June 2019 by the Department of Census and Statistics



# Budget Deficit

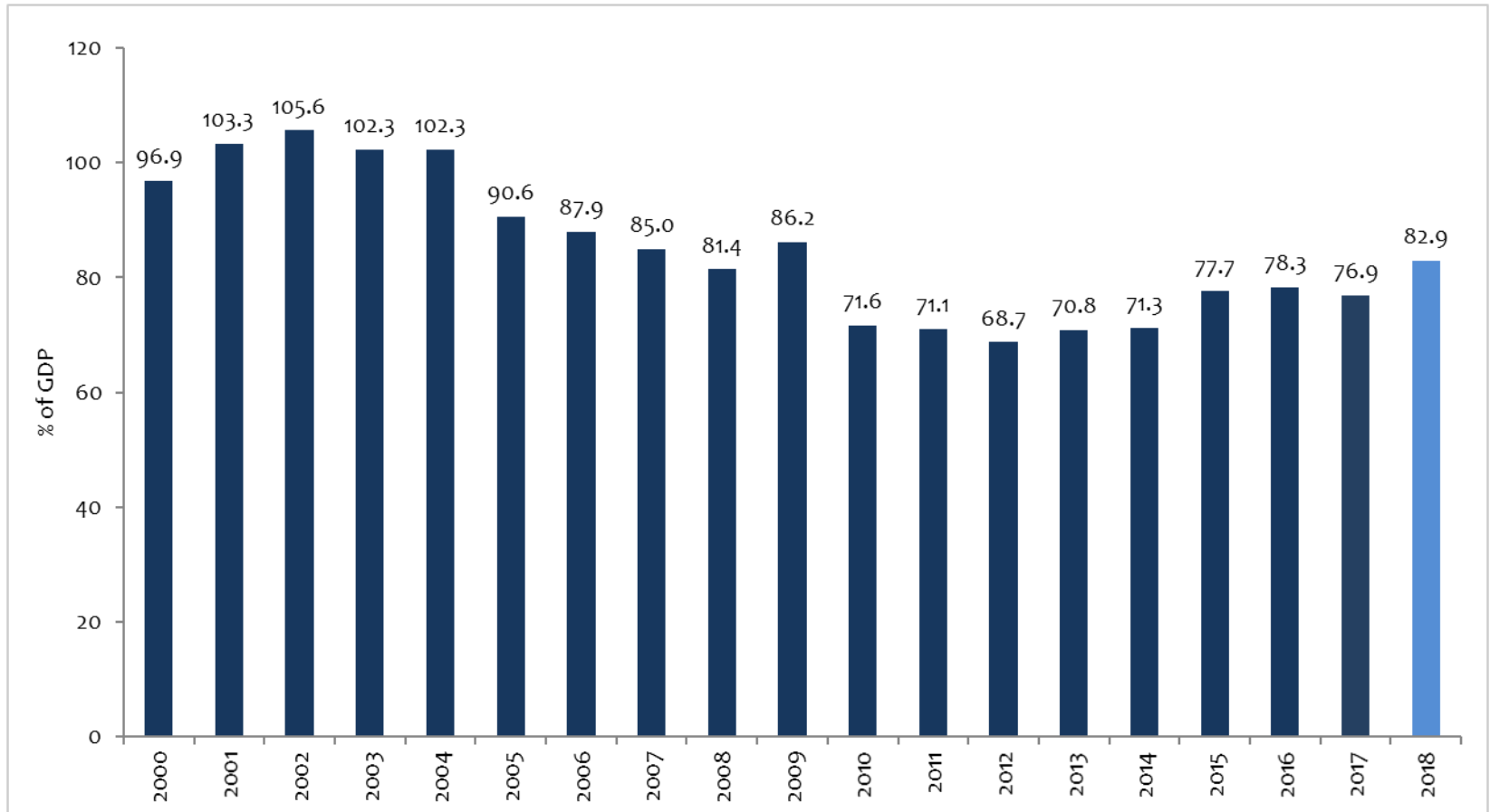


Source: Ministry of Finance, Economic and Policy Development

Note: Information from 2010 are based on rebased (2010 prices) estimates of GDP published by the Department of Census and Statistics  
Data (2016,2017) are based on latest GDP estimates made available on 19 June 2019 by the Department of Census and Statistics



# Central Government Debt

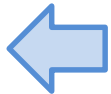


Source: Ministry of Finance, Economic and Policy Development  
Central Bank of Sri Lanka

Note: Information from 2010 are based on rebased (2010 prices) estimates of GDP published by the Department of Census and Statistics  
Data (2016,2017) are based on latest GDP estimates made available on 19 June 2019 by the Department of Census and Statistics

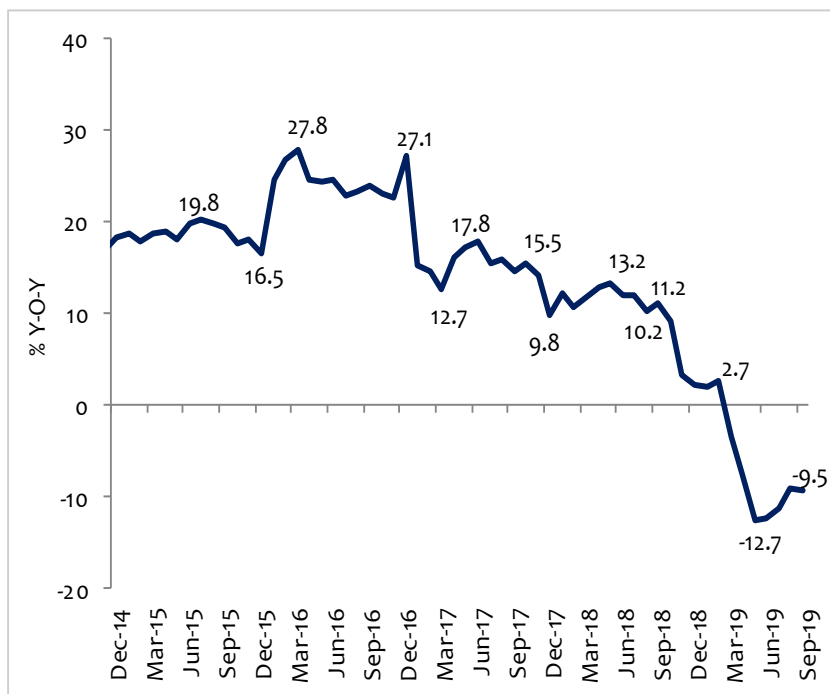


# Monetary Sector

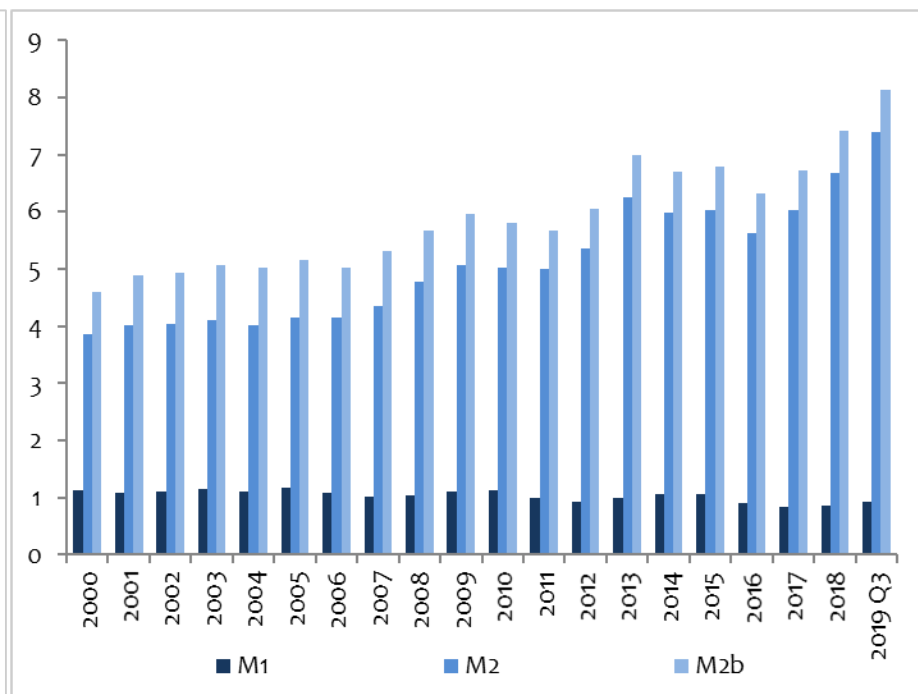


# Reserve Money Growth and Money Multiplier

## Reserve Money Growth (Y-O-Y)



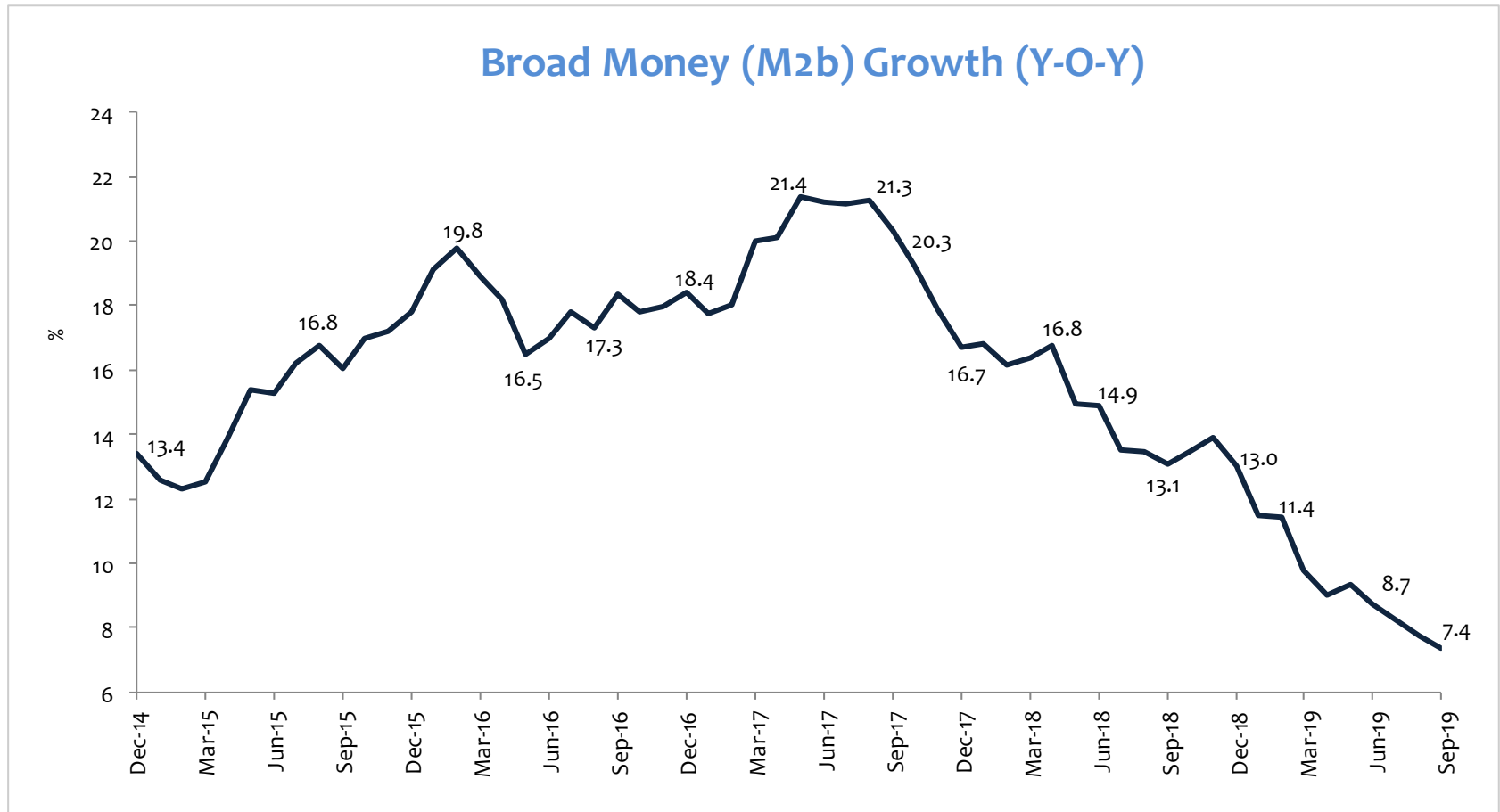
## Money Multiplier



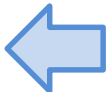
Source: Central Bank of Sri Lanka



# Broad Money Growth

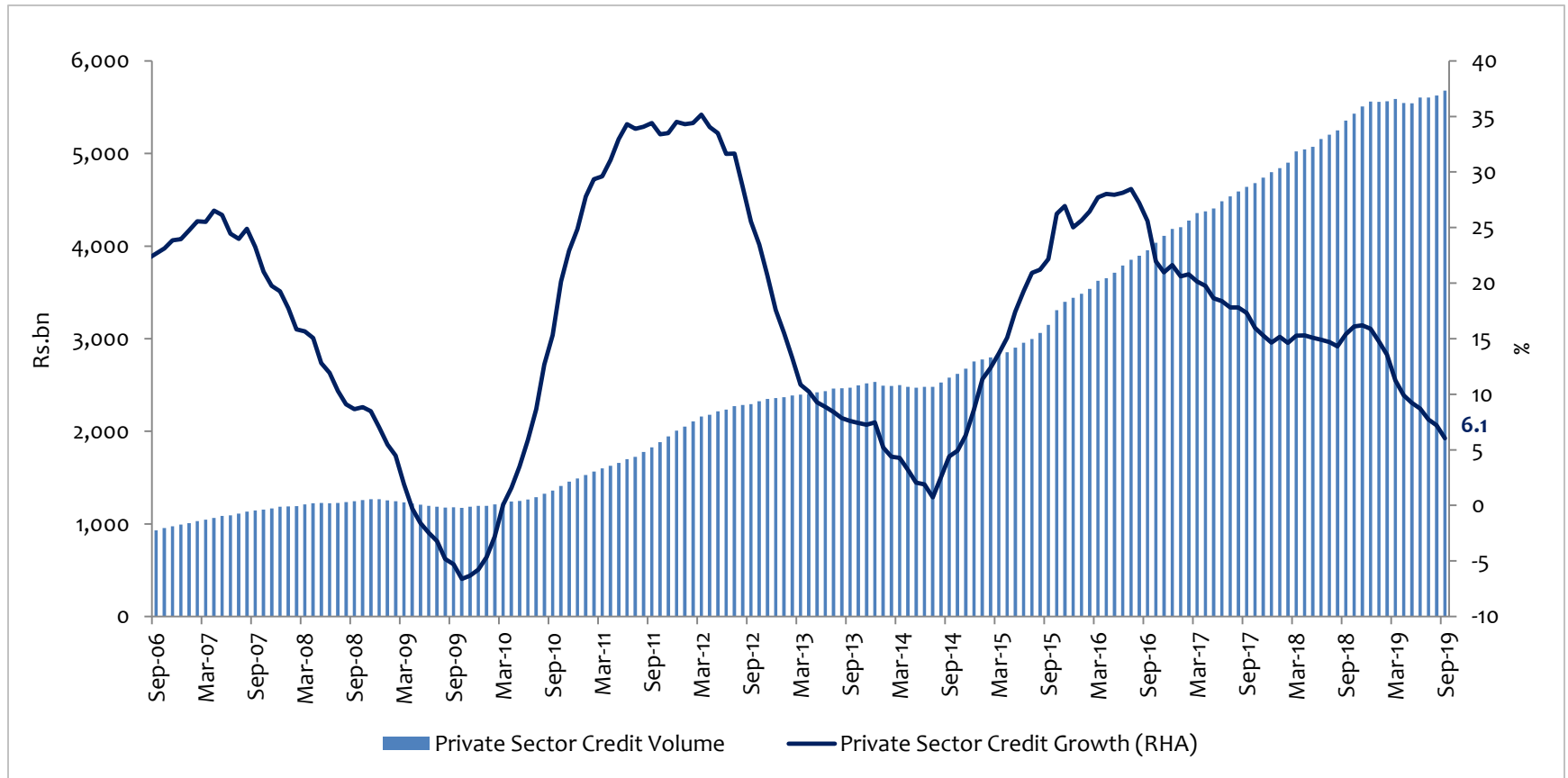


Source: Central Bank of Sri Lanka





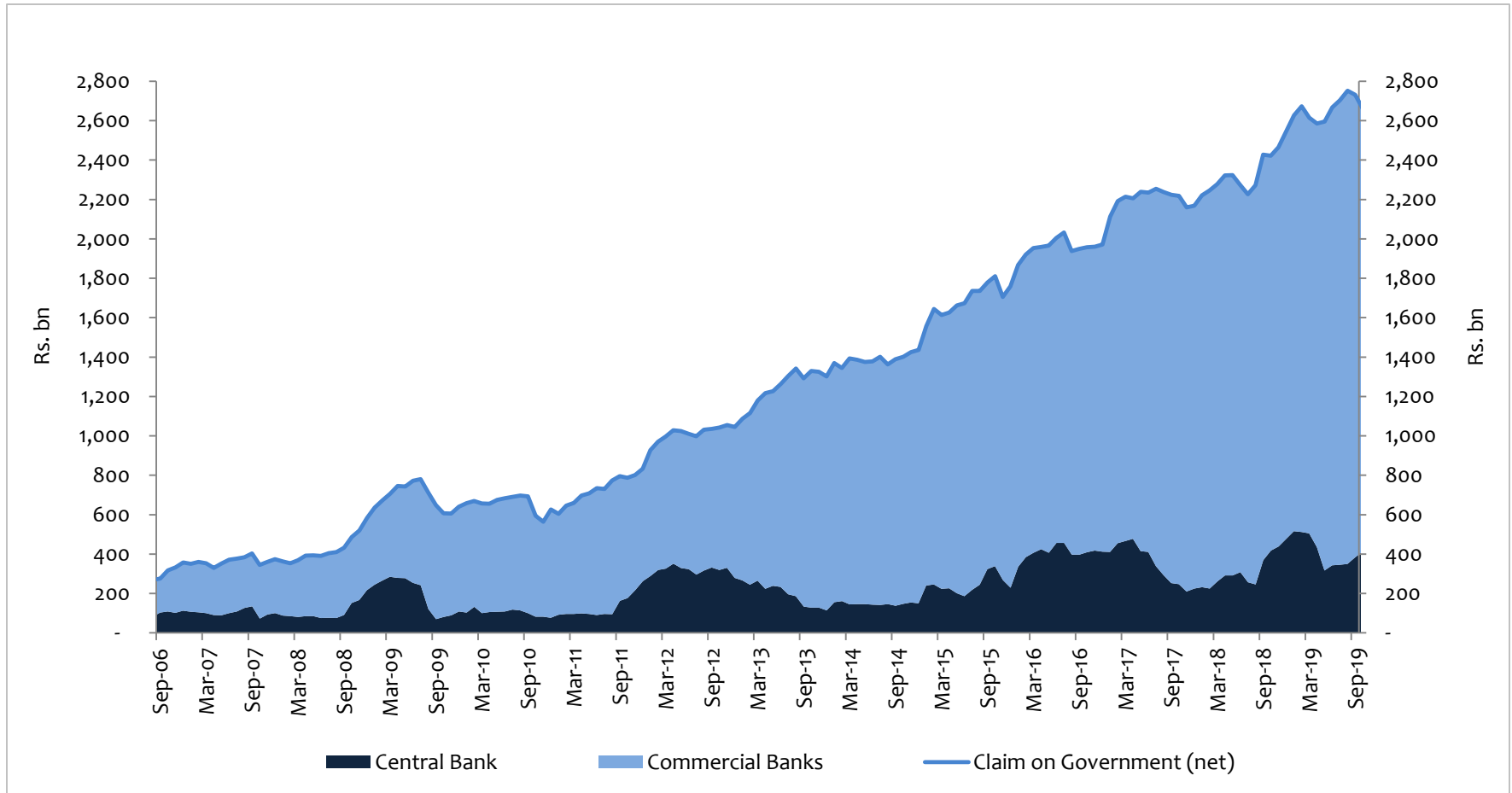
# Credit to the Private Sector



Source: Central Bank of Sri Lanka



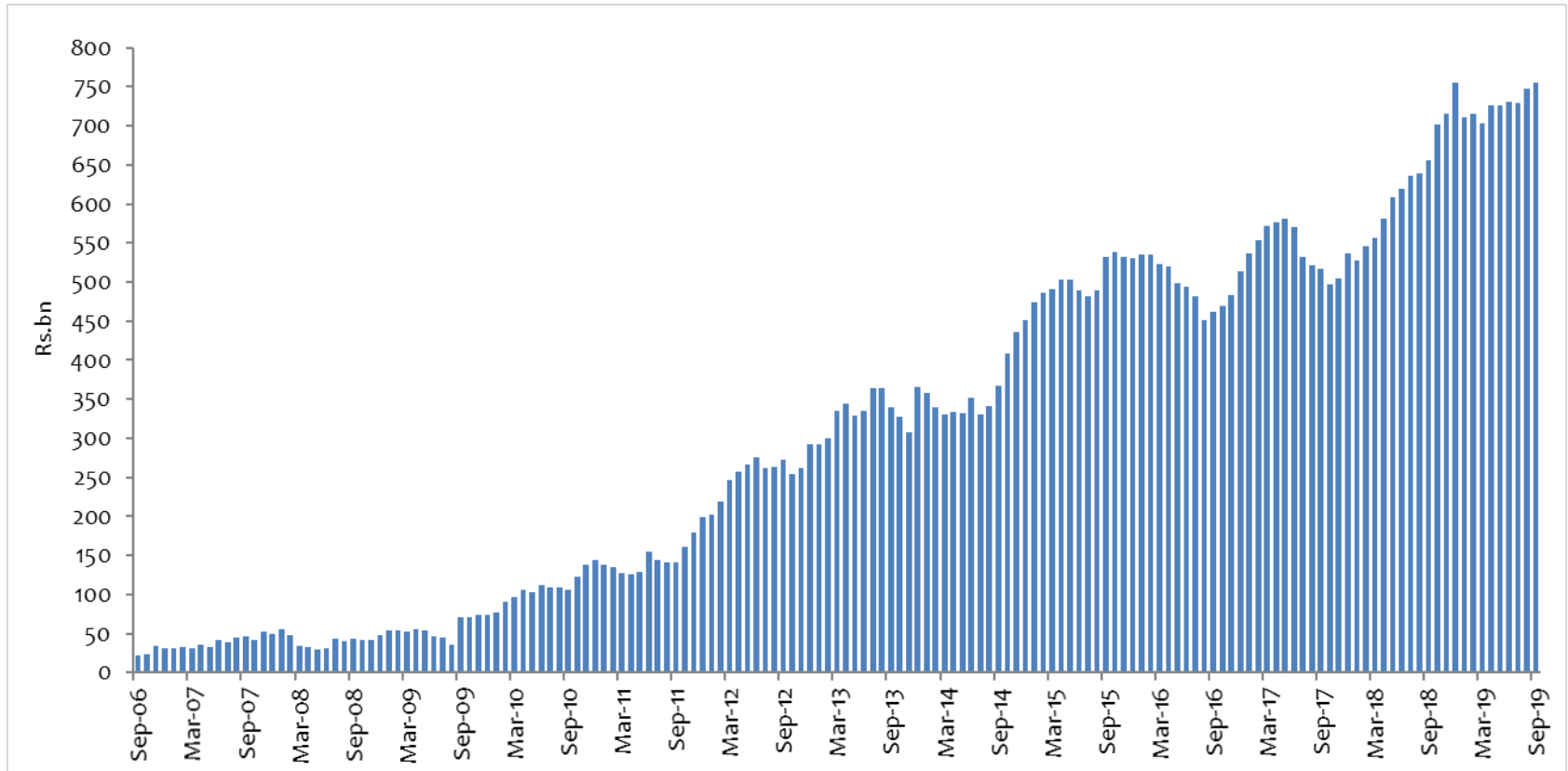
# Net Credit to the Government



Source: Central Bank of Sri Lanka



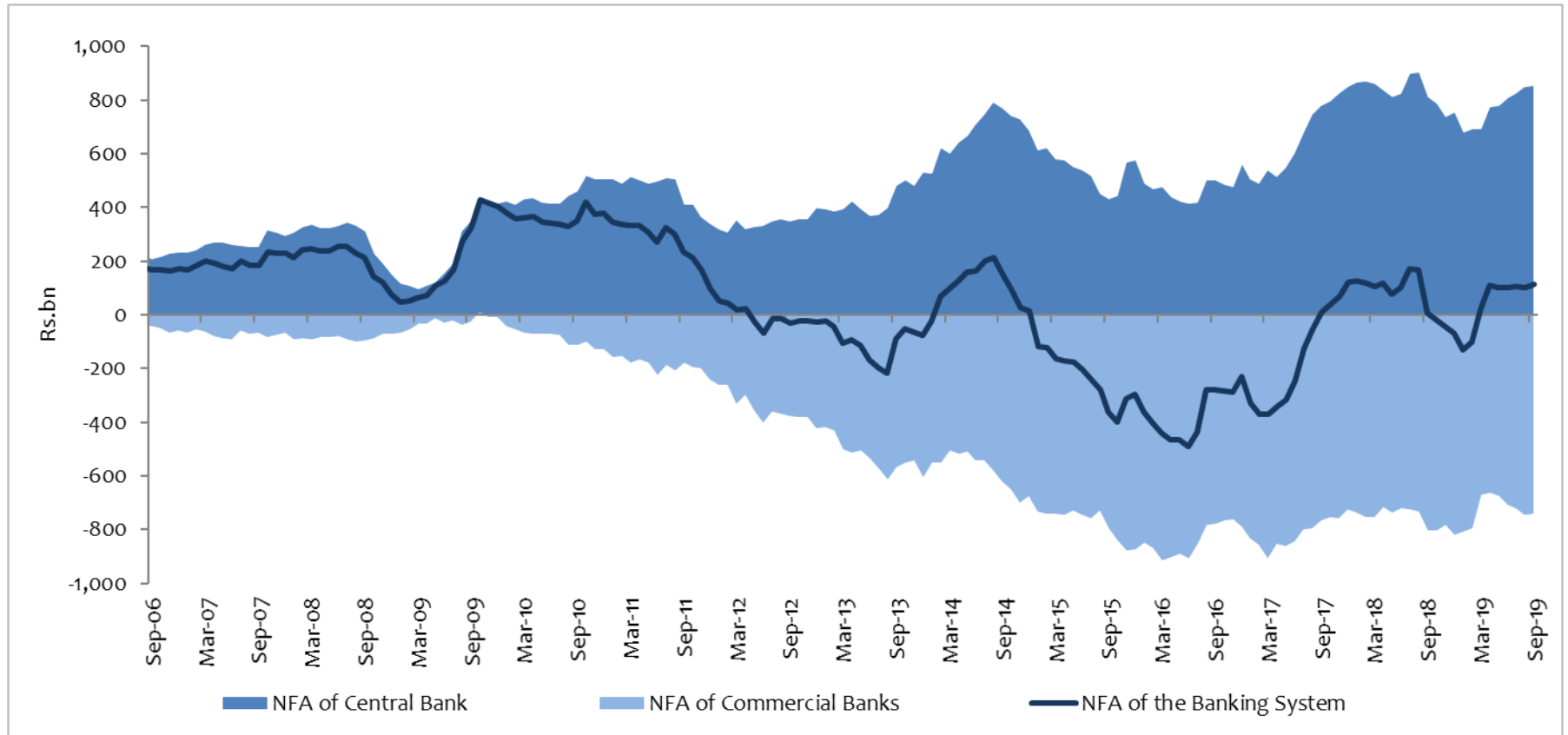
# Credit to Public Corporations



Source: Central Bank of Sri Lanka



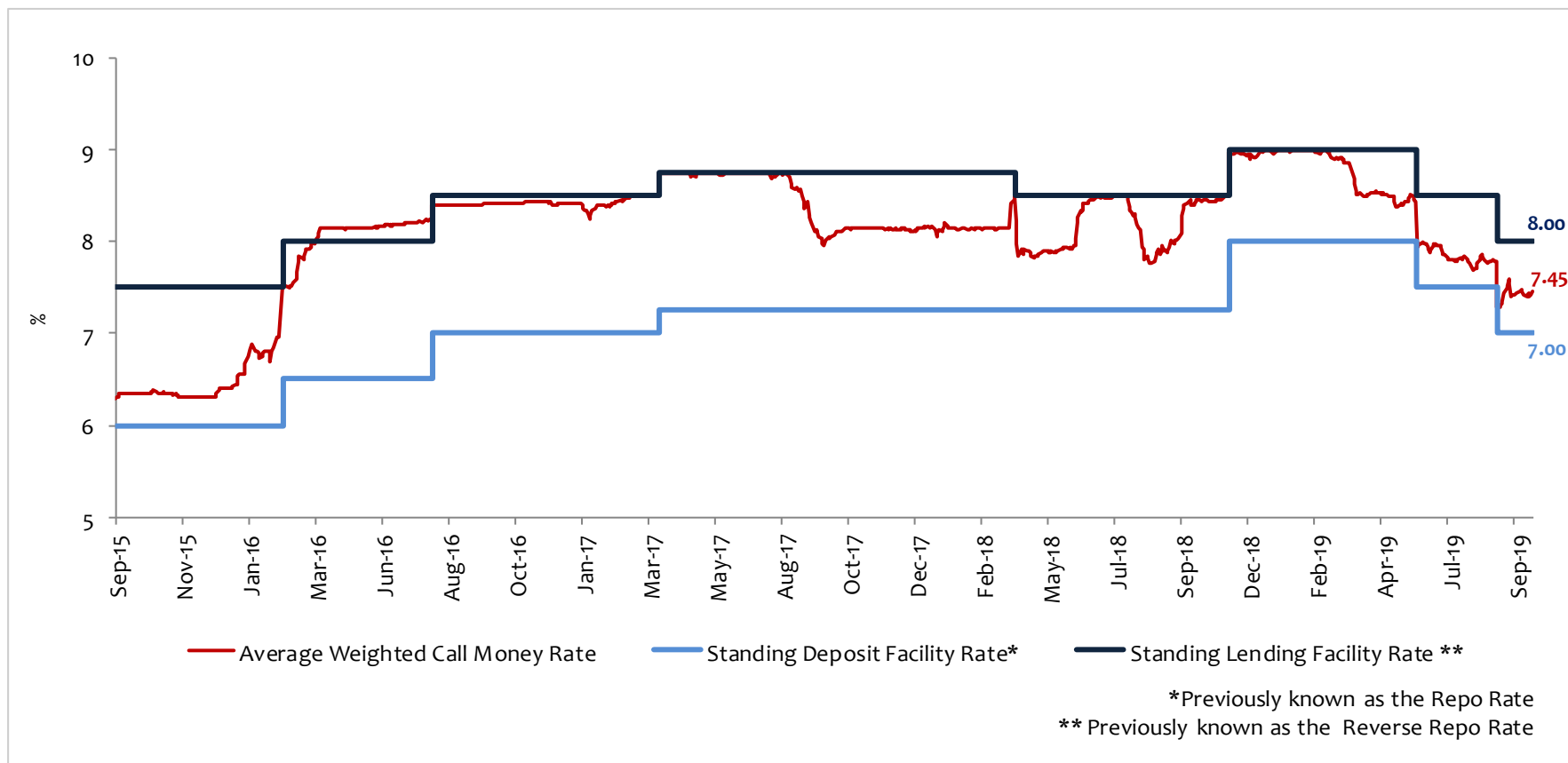
# Net Foreign Assets (NFA)



Source: Central Bank of Sri Lanka



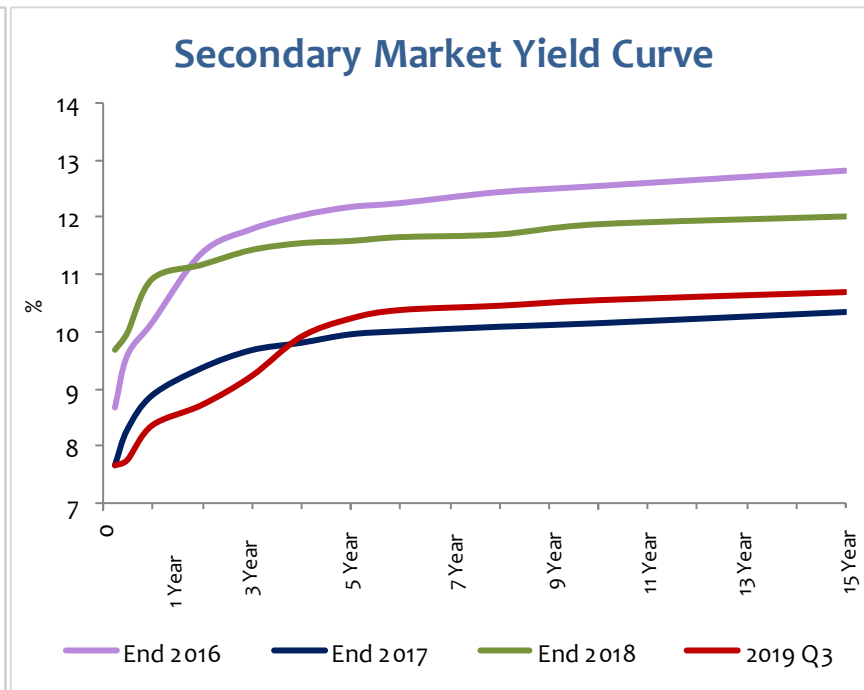
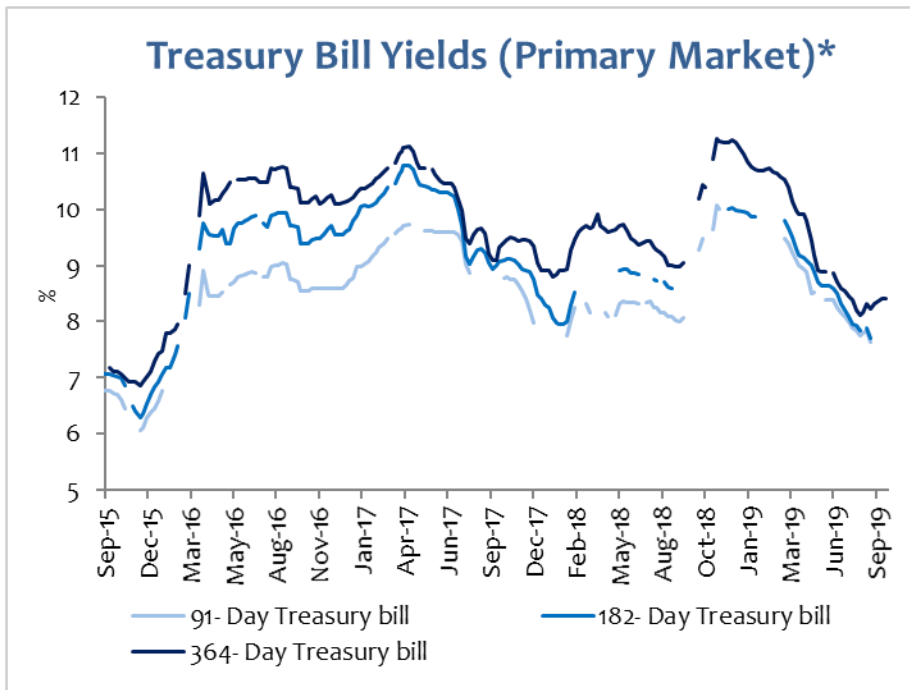
# Policy Interest Rates and Overnight Money Market Rates



Source: Central Bank of Sri Lanka



# Treasury Bill Yields and the Yield Curve



Source: Central Bank of Sri Lanka

\*Yield rates for some weeks are not available due to non-acceptance of bids or not offering of relevant tenors



# Market Interest Rates



Source: Central Bank of Sri Lanka



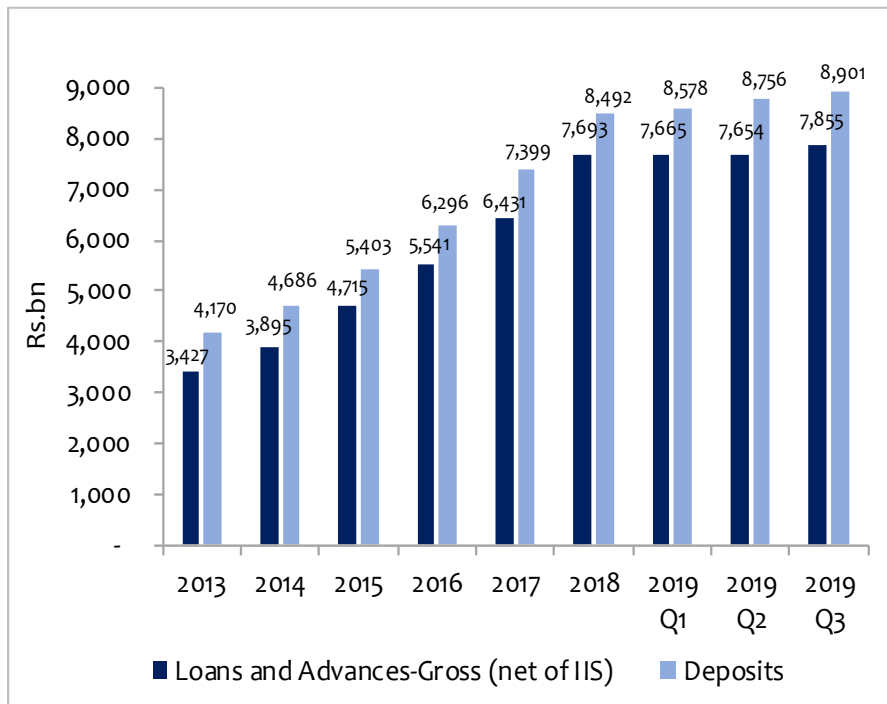
# Financial Sector



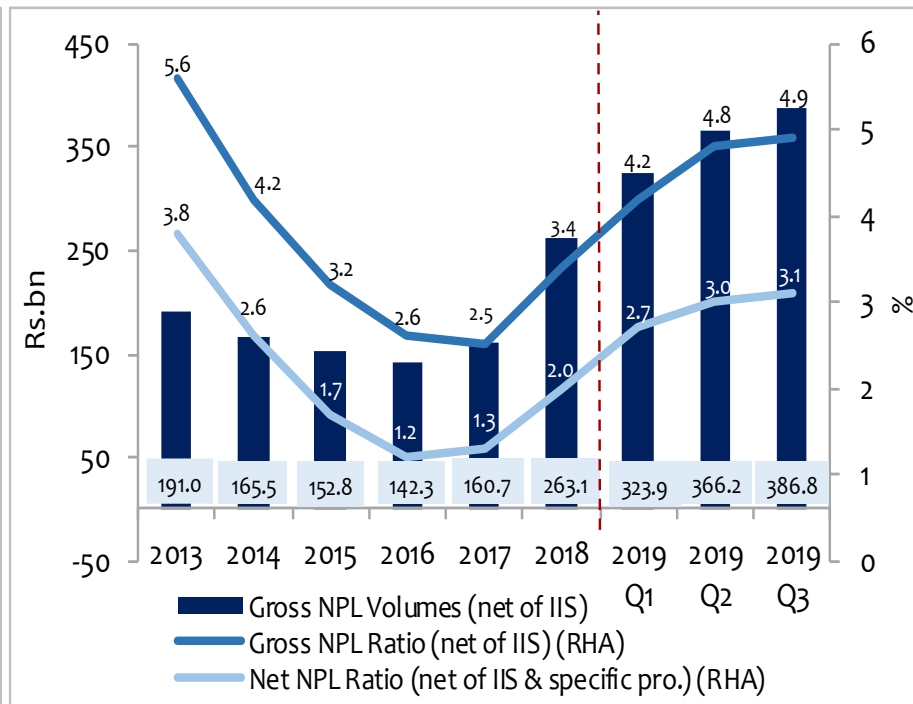


# Banking Sector Indicators (i)

## Assets and Liabilities of the Banking Sector



## Non-Performing Loans of the Banking Sector



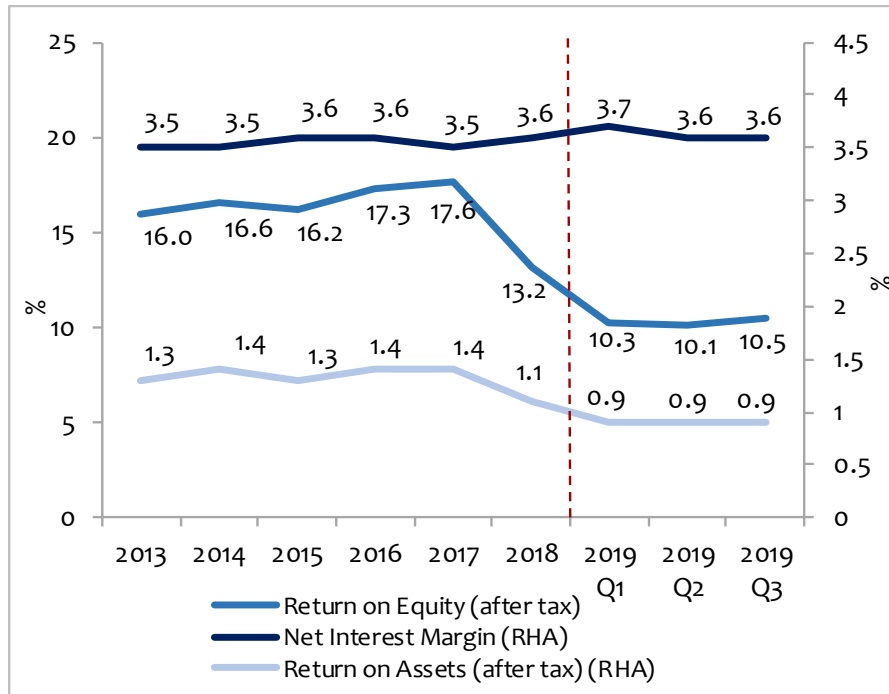
Source: Central Bank of Sri Lanka

IIS: Interest In Suspense

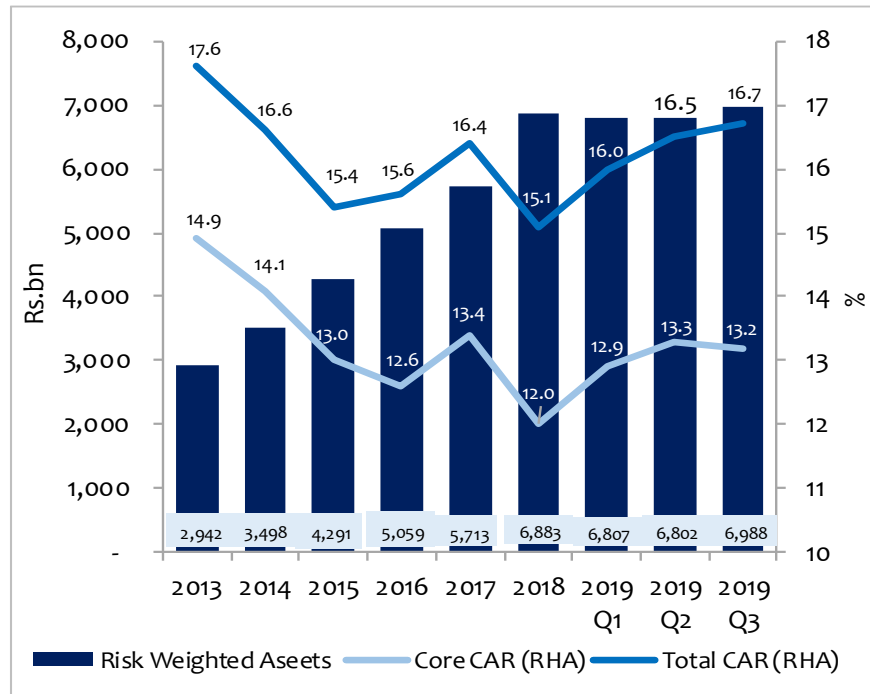


# Banking Sector Indicators (ii)

## Profitability Indicators



## Capital Adequacy Ratios

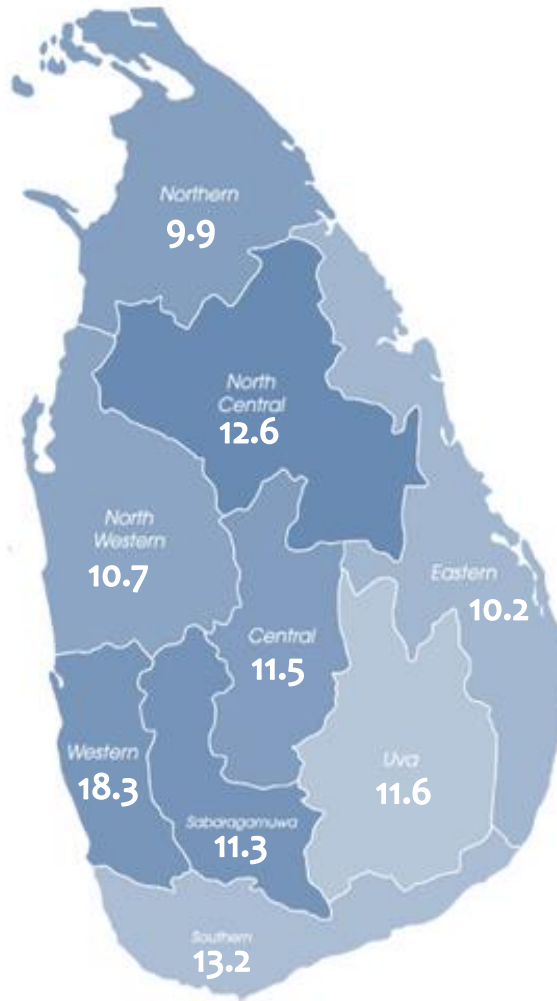


Source: Central Bank of Sri Lanka

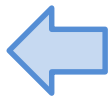
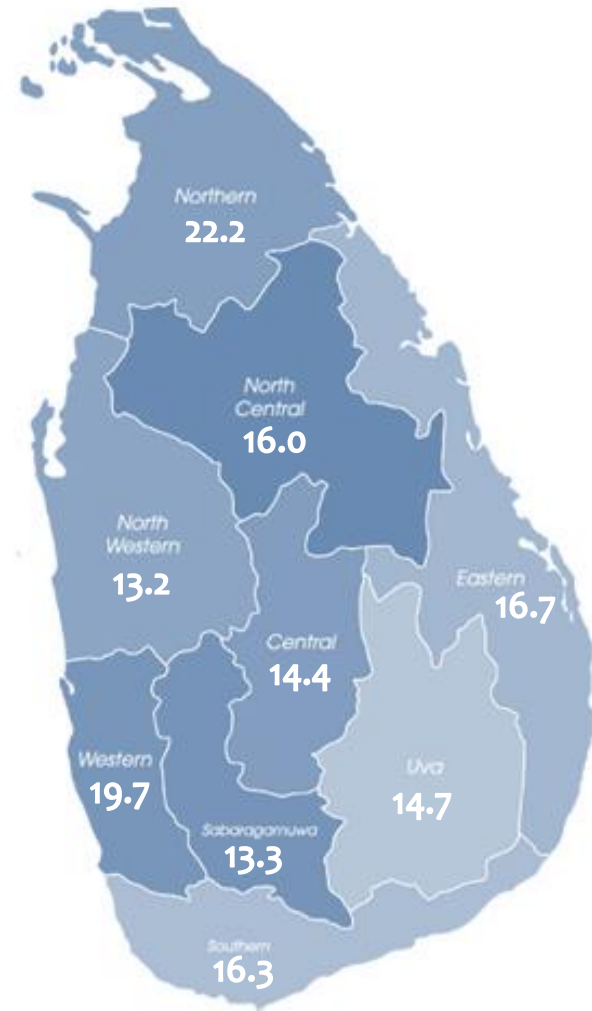


# Banking Density by Province\*

2009

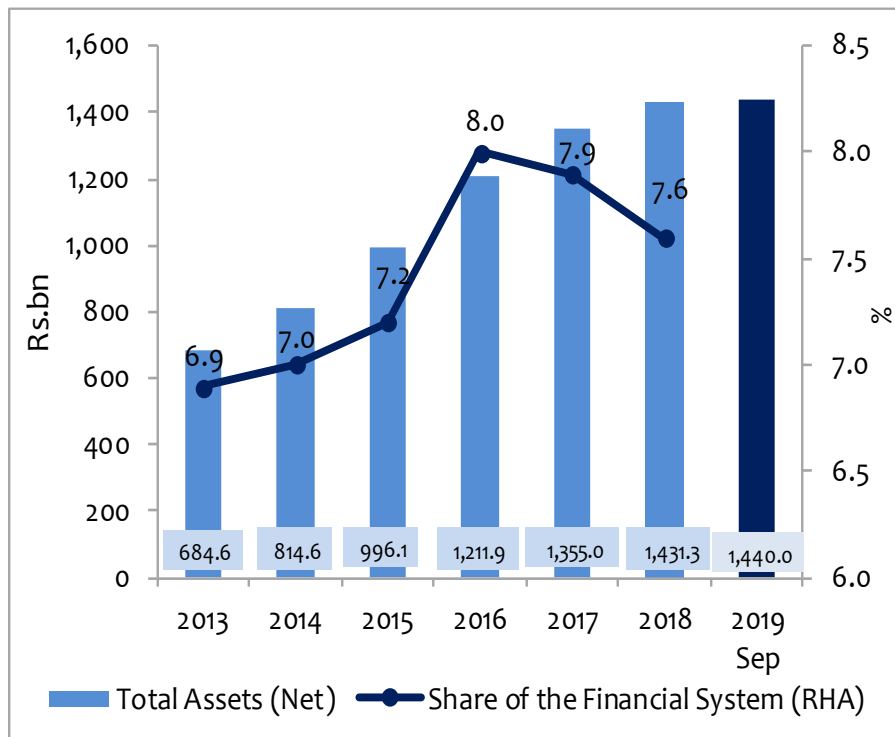


2019 Q3

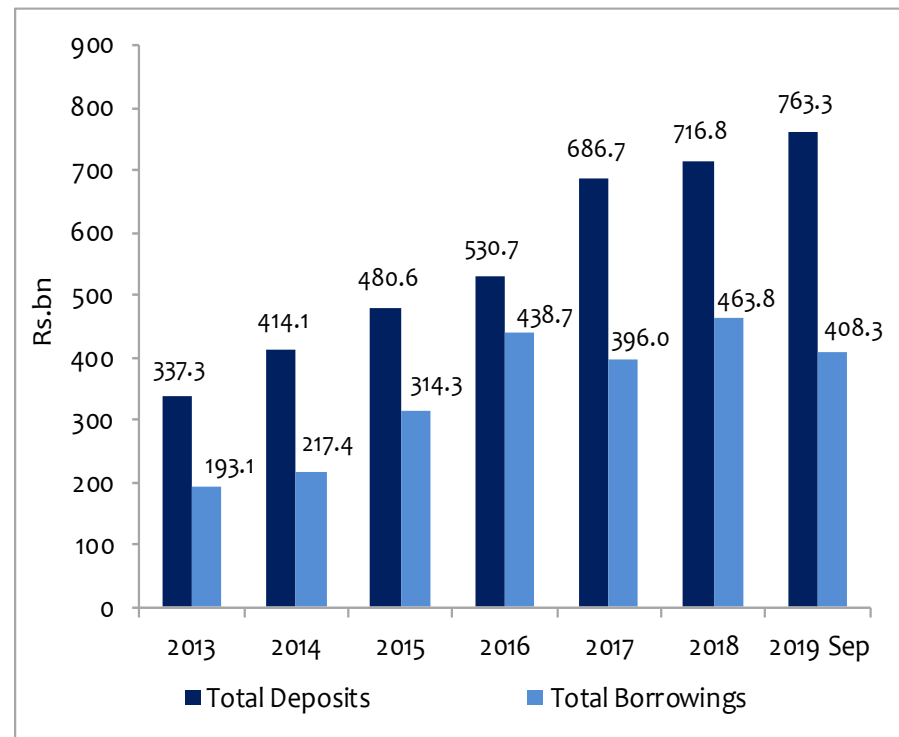


# Non-Bank Financial Sector Indicators (i)

## Assets of the LFC & SLC Sector



## Total Deposits and Borrowings of the LFC & SLC Sector\*



Source: Central Bank of Sri Lanka

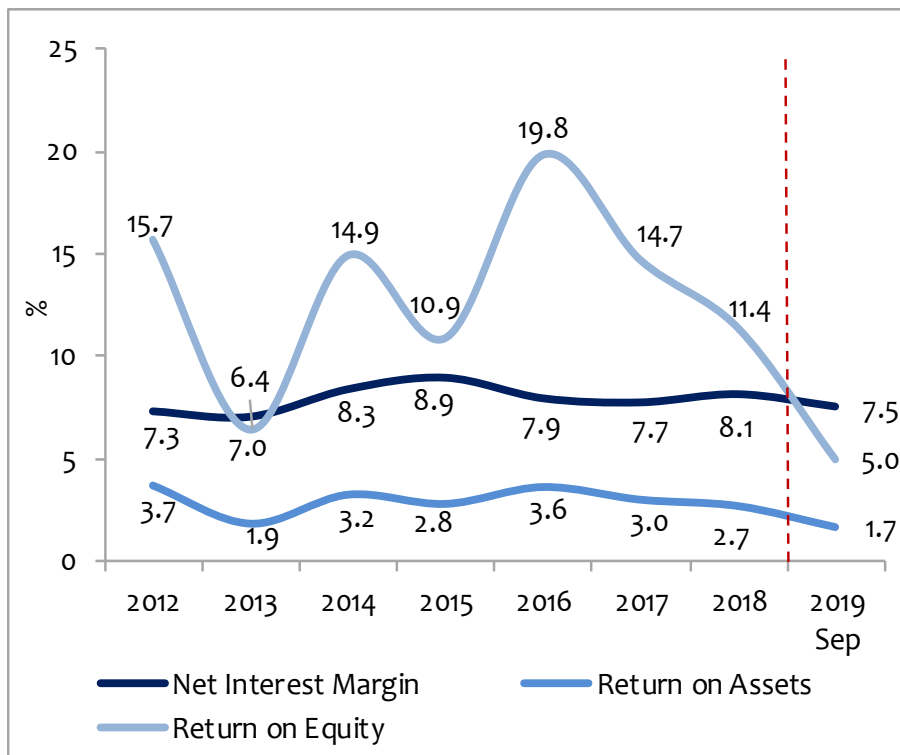
\* Deposits are only mobilized by the LFCs

LFC: Licensed Finance Companies  
SLC: Specialised Leasing Companies

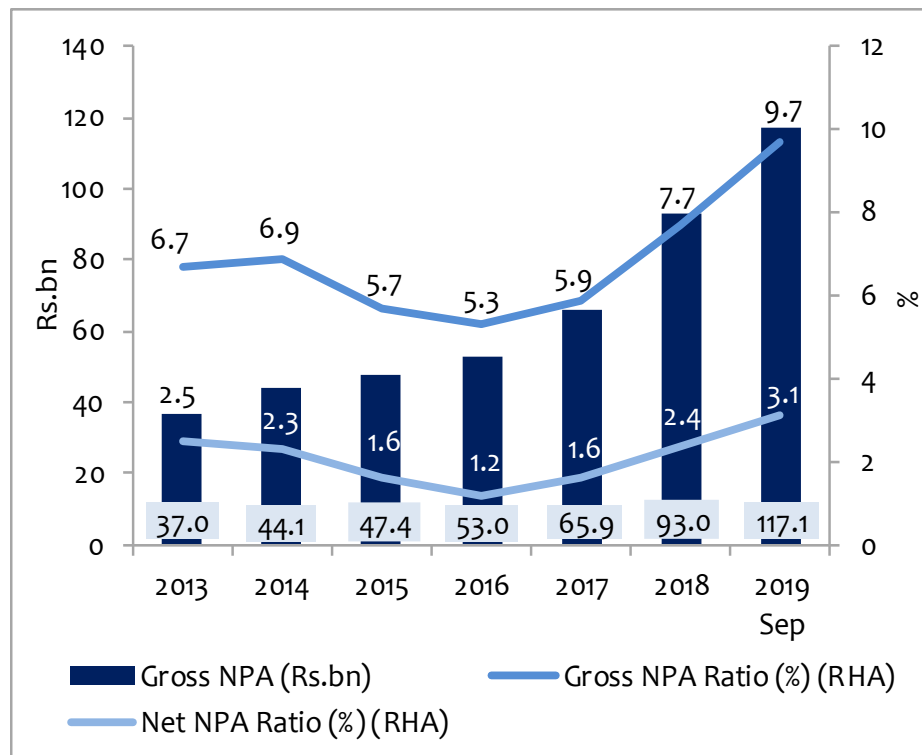


# Non-Bank Financial Sector Indicators (ii)

## Profitability Indicators of the LFC and SLC Sector



## Non-Performing Advances

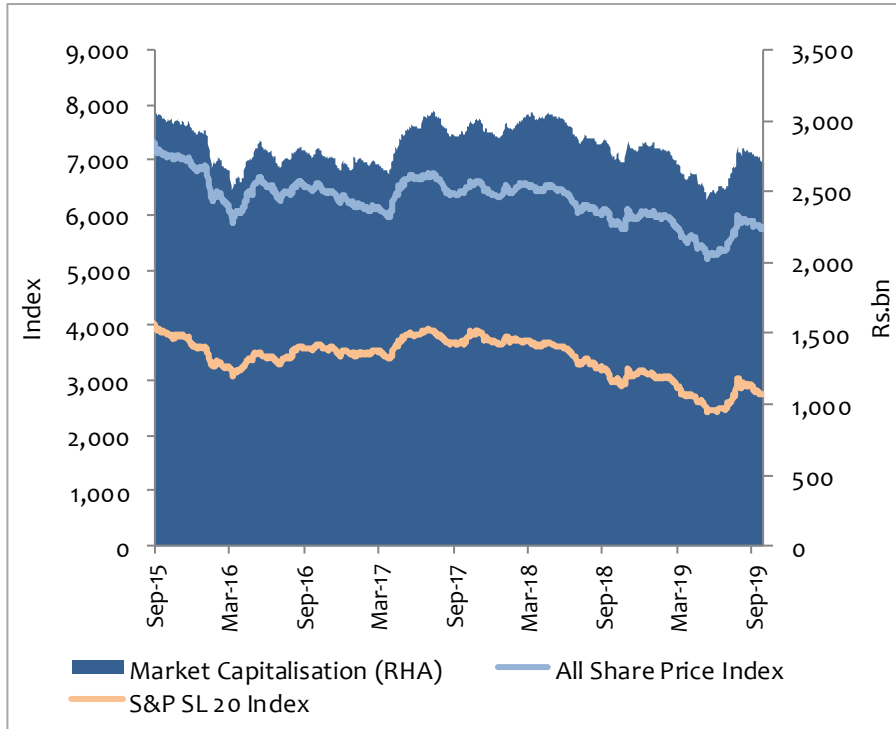


Source: Central Bank of Sri Lanka

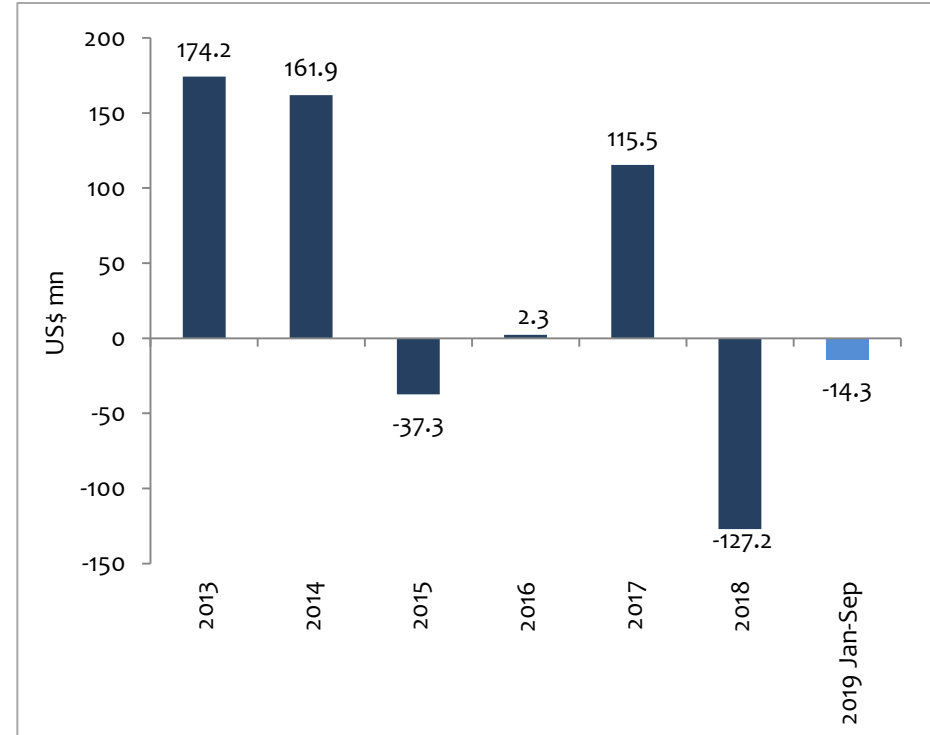


# Stock Market Performance

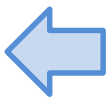
## Share Price Indices and Market Capitalisation



## Net Foreign Inflows to the Secondary Market



Source: Colombo Stock Exchange



The sets of graphs above summarise macroeconomic and financial market trends in Sri Lanka. However, these graphs do not contain source data. An extensive set of data is available in the CBSL website. Information for the third quarter of 2019 is provisional.

