

HIGHLIGHTS

Paddy production for 2025/26 Maha season, based on the sown extent as of end March 2026, is forecasted at 2.82 million metric tons, a 2.7% increase from the previous Maha season



Domestic tea production decreased by 8.5% (y-o-y) during the month of April 2026 due to dry weather conditions and reduced fertilizer application during the previous quarter



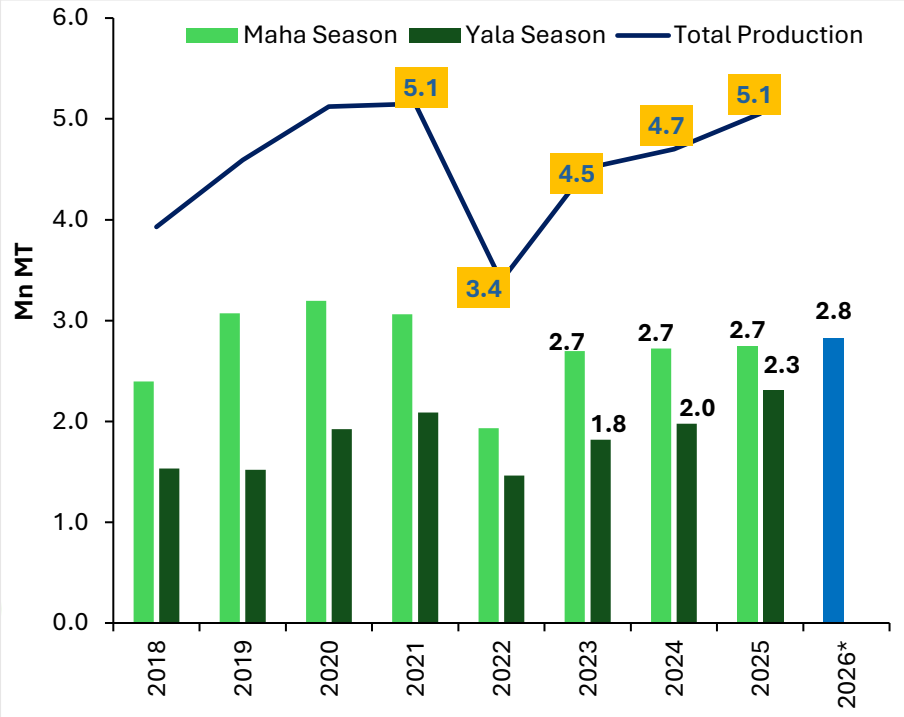
Local rubber production increased in April 2026 by 2.3% (y-o-y), while global natural rubber prices continued to increase



Marine fish production declined by 8.8% (y-o-y) in April 2026 amid rising sea surface temperatures and higher fuel prices



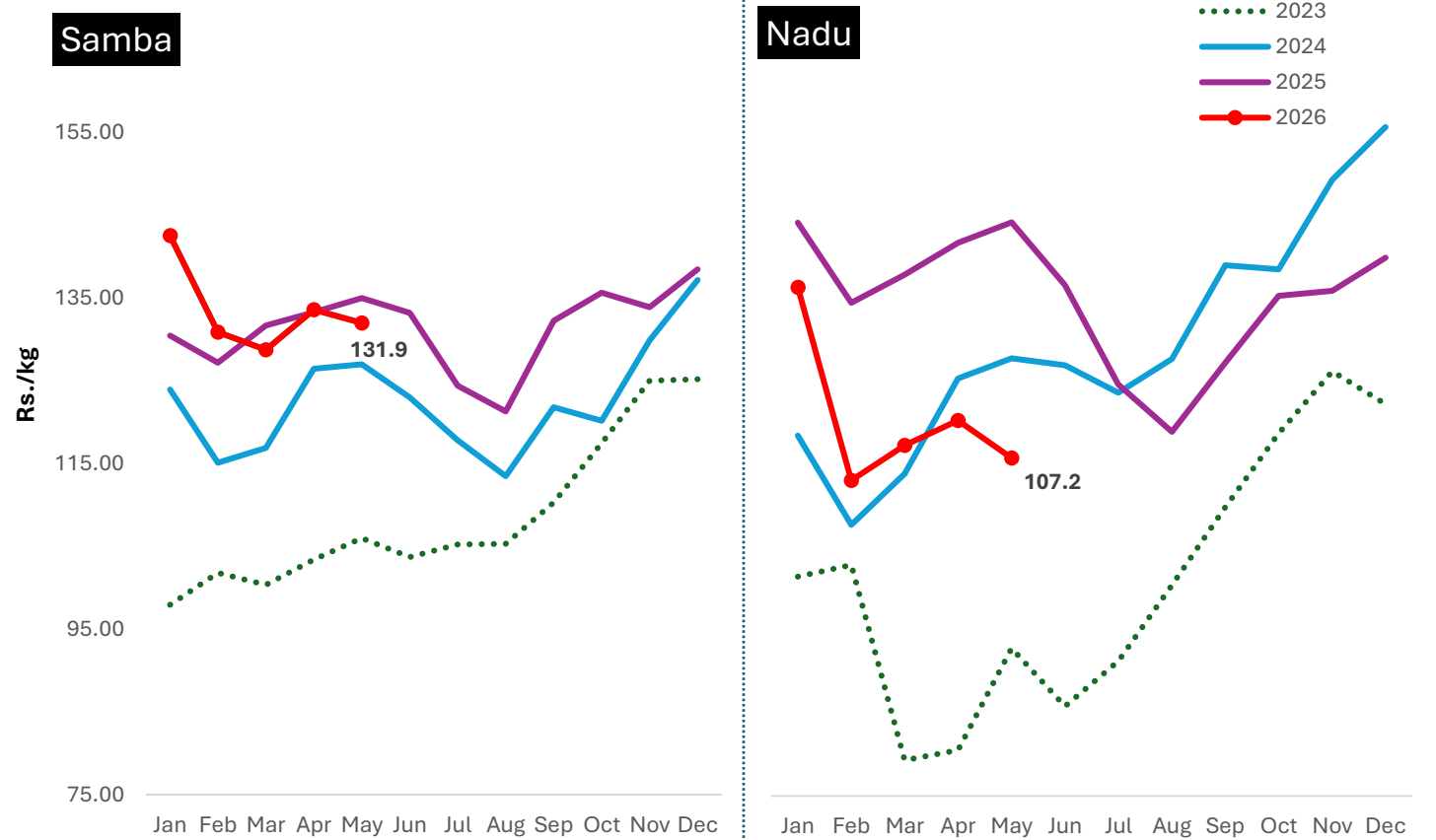
Paddy Production



*2025/26 Maha season production is based on the Department of Agriculture forecast

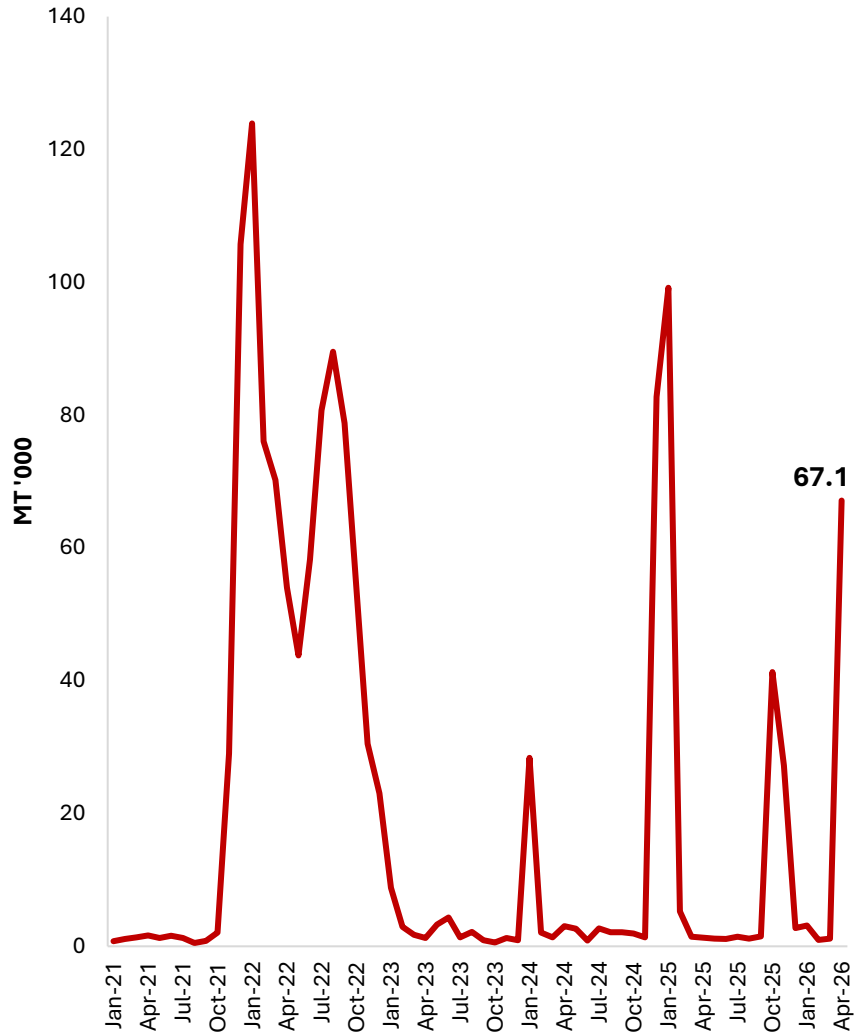
Season	2023 (mn mt)	2024 (mn mt)	2025 (mn mt)	Growth % (y-o-y)
Maha	2.70	2.72	2.74	0.9
Yala	1.82	1.98	2.31	16.8
Annual	4.51	4.70	5.05	7.6

Farmgate/Producer Prices of Paddy



- Paddy production for 2025/26 Maha season is estimated as **2.82 million metric tons (2.7% increase from the previous Maha season)** based on sown extent reported, including re-cultivation extent, as at end March 2026
- Annual paddy production for the year 2025 was recorded as **5.05 million metric tons (7.6% increase from the previous year)**

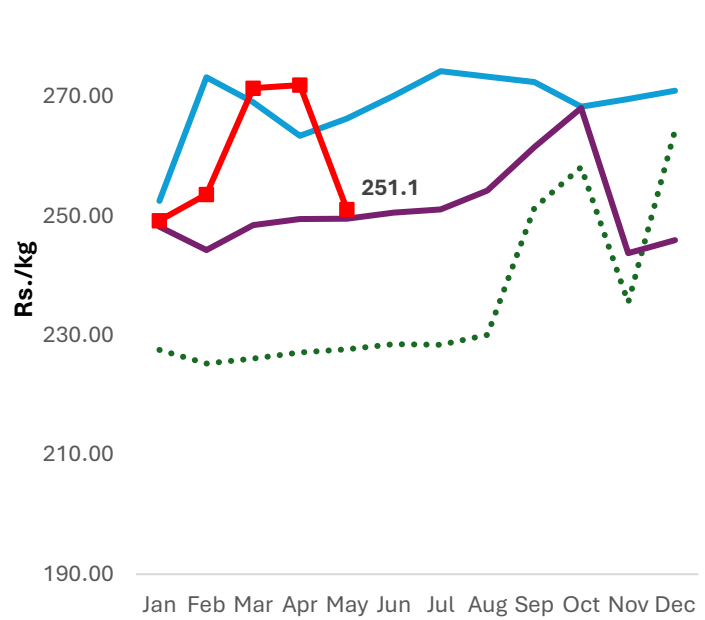
Rice Imports



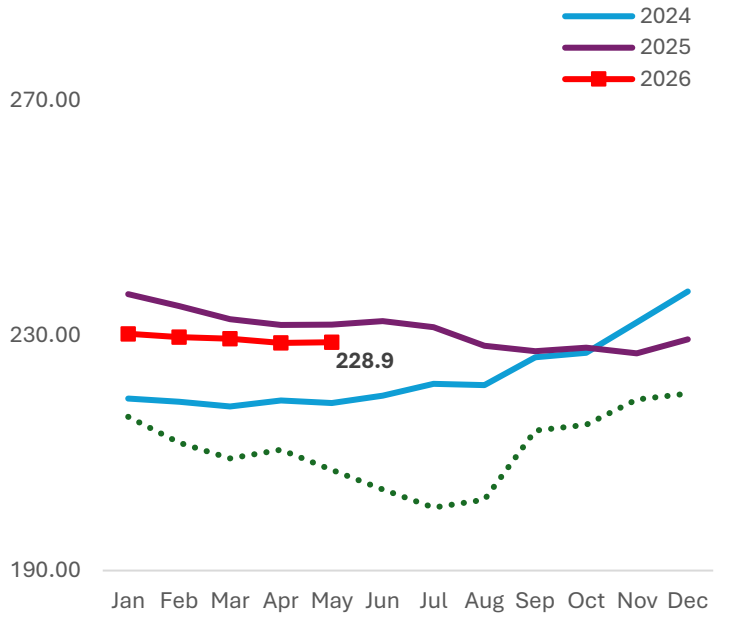
Rice imports recorded a notable increase in April 2026, as the Government permitted the importation of GR 11 rice, including specific substitute varieties, to address the shortage of Samba and Keeri Samba rice

Retail Rice Prices

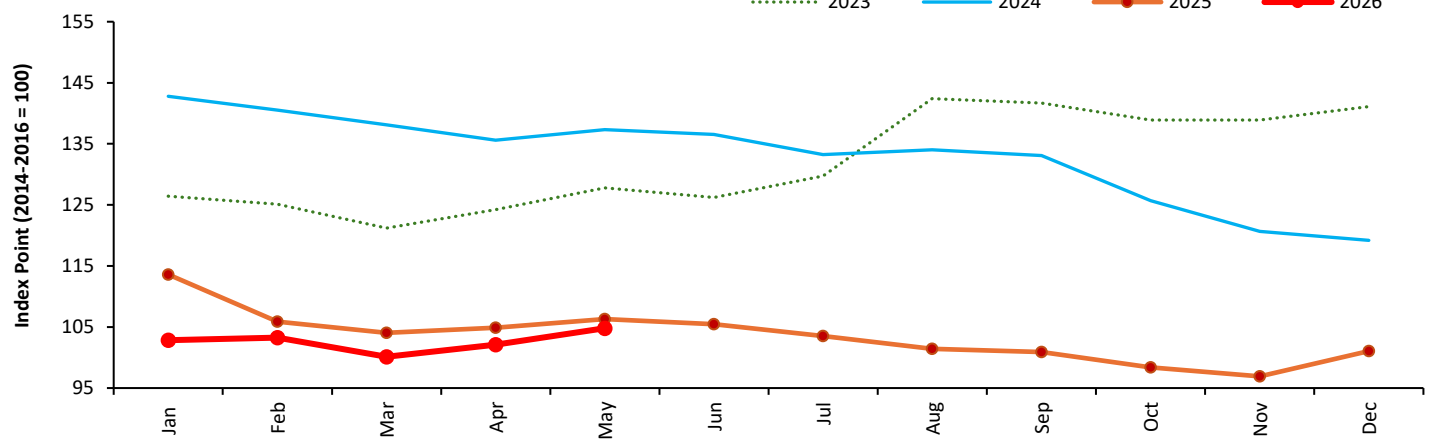
Samba



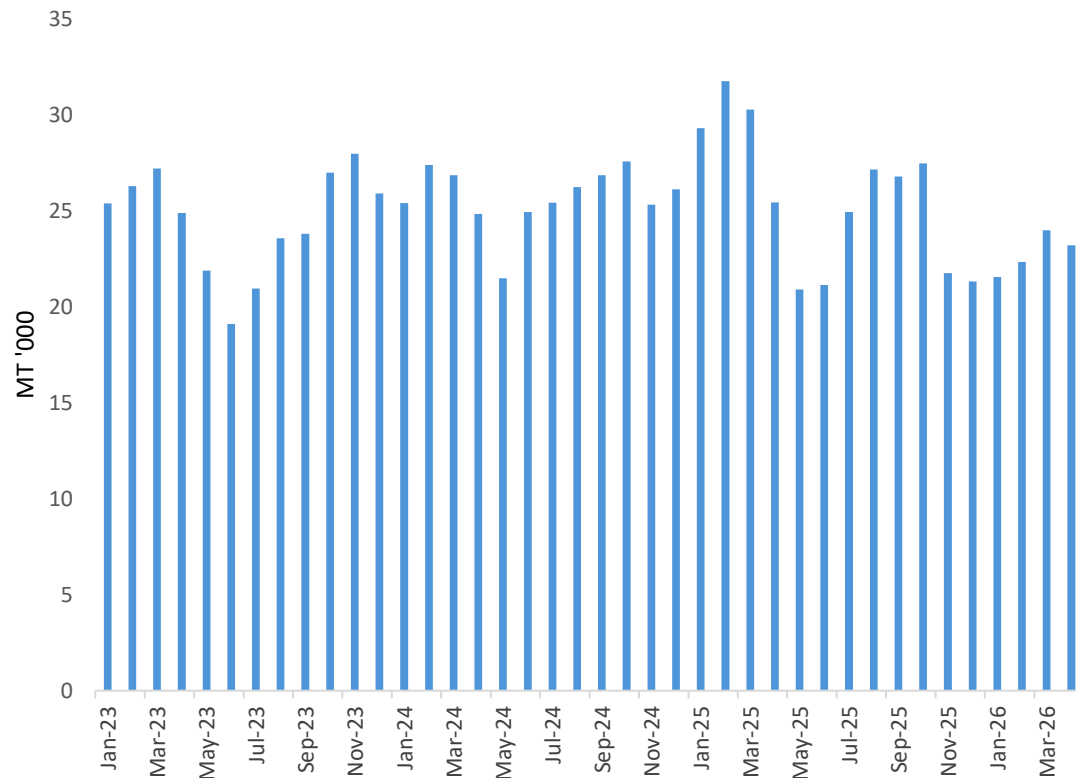
Nadu



FAO All Rice Price Index



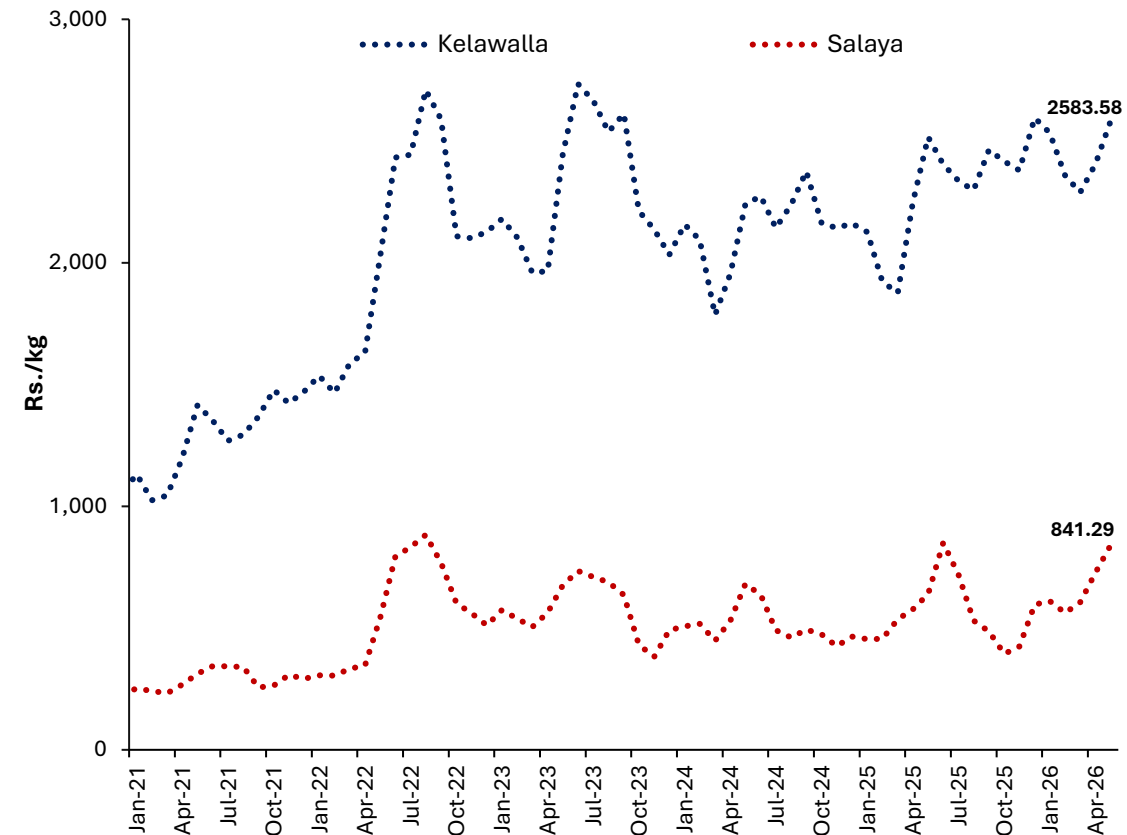
Marine Fish Production



	2024	2025	2026 Jan-Apr
Marine Fish Production (MT '000)	308	308	91.1

Note: Inland fish production data were removed from the bulletin due to the unavailability of data since January 2026

Retail Fish Prices



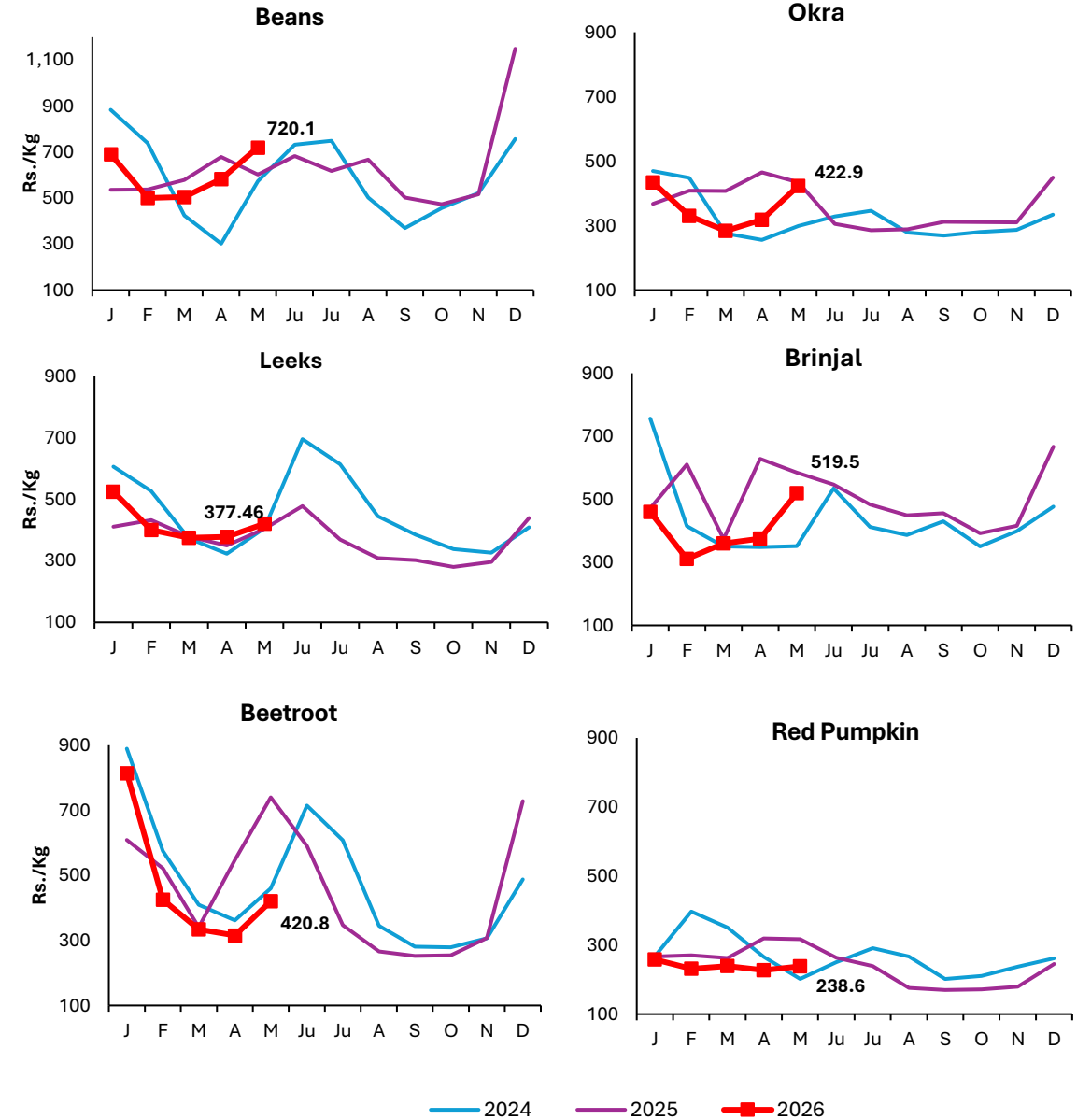
- According to provisional data, total marine fish production declined by 8.8% (y-o-y) in April 2026 amid rising sea surface temperatures and higher fuel prices impacting fishing activities

Sources: Ministry of Fisheries, Department of Census and Statistics

Vegetable Production (MT)

	2023 Yala	23/24 Maha	2024 Yala	24/25 Maha	2025 Yala	25/26 Maha*	25/26 Maha Y-o-Y
Up Country							
Tomatoes	34,169	39,293	34,945	28,480	33,012	42,849	↑
Cabbage	47,773	58,552	48,242	41,811	20,495	50,736	↑
Carrot	25,267	48,836	24,374	25,604	18,886	34,711	↑
Beetroot	21,444	17,332	20,034	15,825	12,033	14,900	↓
Raddish	27,557	40,159	27,567	31,271	15,974	34,476	↑
Beans	25,287	36,345	26,128	20,468	26,225	47,267	↑
Low Country							
Luffa	18,417	22,225	18,521	20,465	18,670	13,012	↓
Okra	31,351	37,620	35,003	40,296	32,681	33,751	↓
Brinjal	54,450	69,584	54,660	64,545	55,578	63,809	↓
Cucumber	26,603	17,937	27,161	18,982	15,388	15,059	↓
Red pumpkin	41,779	46,890	42,565	48,389	42,975	49,243	↑
Ash plantain	22,833	33,783	24,477	29,506	22,124	3,955	↓
Long bean	27,456	35,539	28,855	34,926	29,515	35,436	↑

Retail Vegetable Prices



*2025/2026 Maha season production is based on the Department of Agriculture forecast

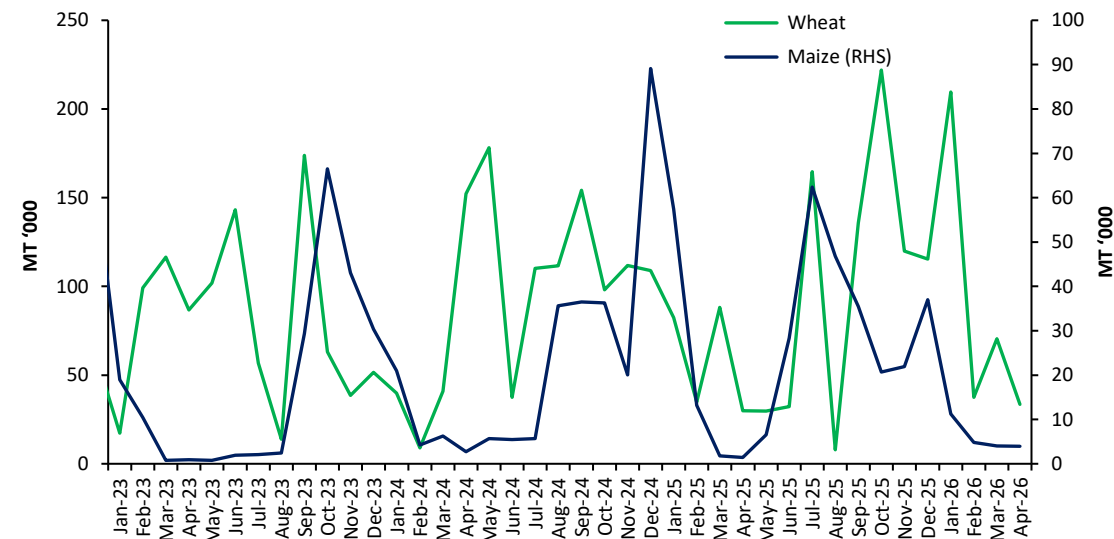
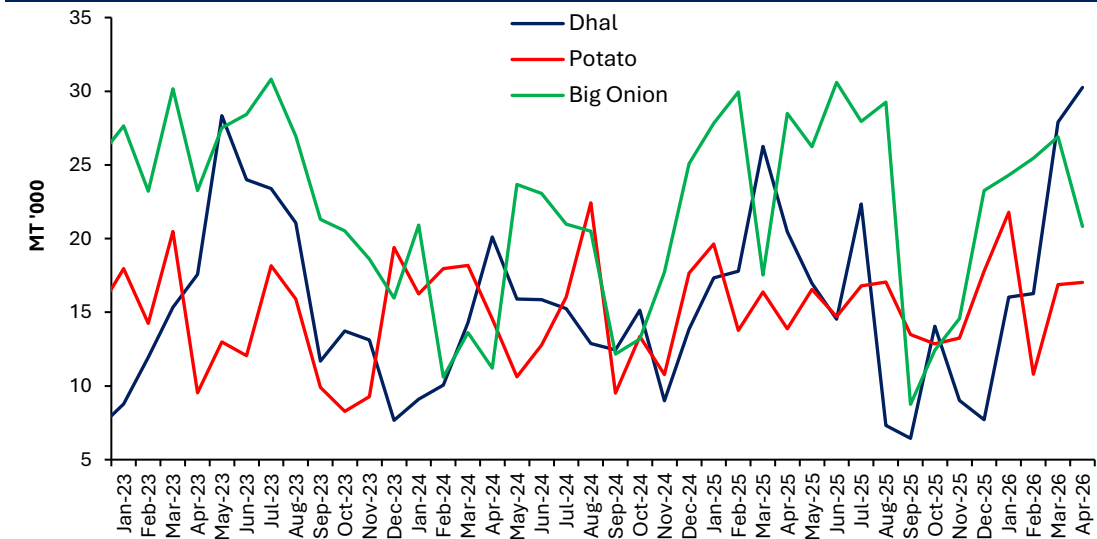
Other Field Crops

Production (MT)	2023 Yala	23/24 Maha	2024 Yala	24/25 Maha	2025 Yala	25/26 Maha*	25/26 Maha Y-o-Y
Potato	21,026	21,291	20,916	15,010	14,360	23,047	↑
Red Onion	22,678	24,762	19,749	24,440	18,311	30,481	↑
Big Onion	4,755	257	8,572	395	20,994	371	↓
Green Chillie	25,128	40,438	26,200	38,285	23,136	71,421	↑
Cowpea	5,779	5,955	5,458	6,307	4,546	6,180	↓
Black gram	1,437	8,518	1,828	7,224	1,790	7,998	↑
Maize	22,647	196,871	26,626	245,351	26,705	370,509	↑
Ground Nut	10,666	17,336	11,626	18,751	10,594	15,993	↓
Gingelly	8,651	2,210	8,293	1,675	8,576	1,421	↓
Green gram	5,514	6,156	8,909	6,754	9,089	4,513	↓

Imports (MT)	2024	2025	2025 Jan - Apr	2026 Jan - Apr
Dhal	163,881	180,225	81,849	90,470
Potato	180,121	186,145	81,312	66,488
Big Onion	212,720	276,862	103,789	97,498

*2025/2026 Maha season production is based on the Department of Agriculture forecast

Import Trend of Selected Food Items



Sources: Department of Census and Statistics, Sri Lanka Customs

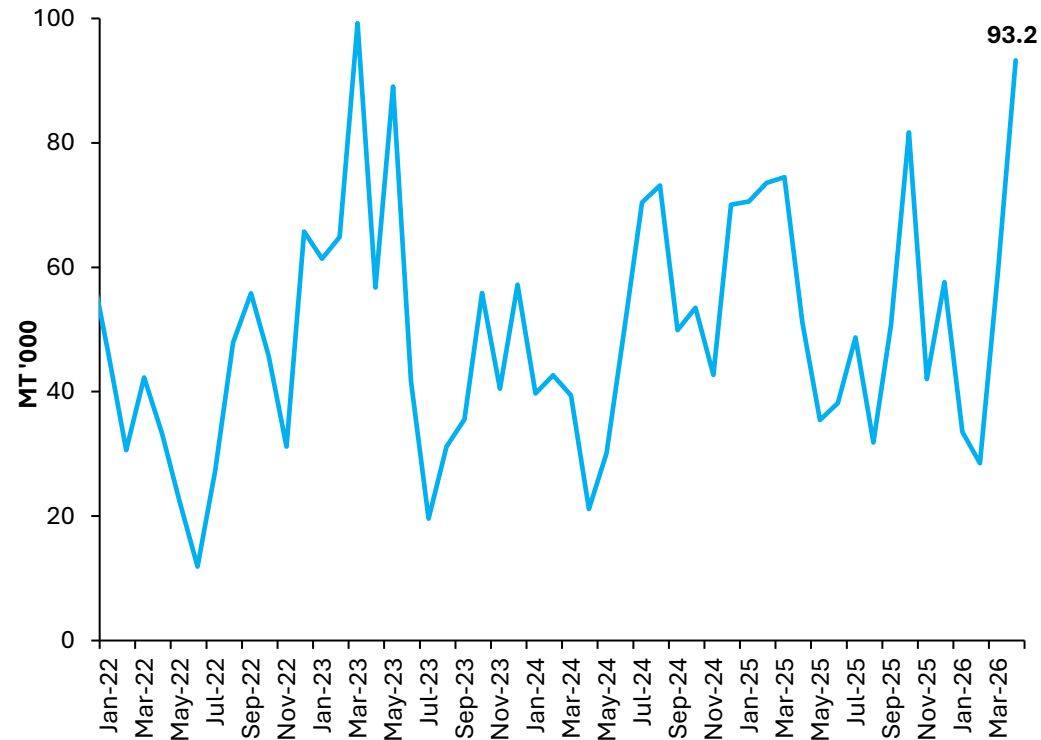
Sugar

2025 Jan - Apr 2026 Jan - Apr

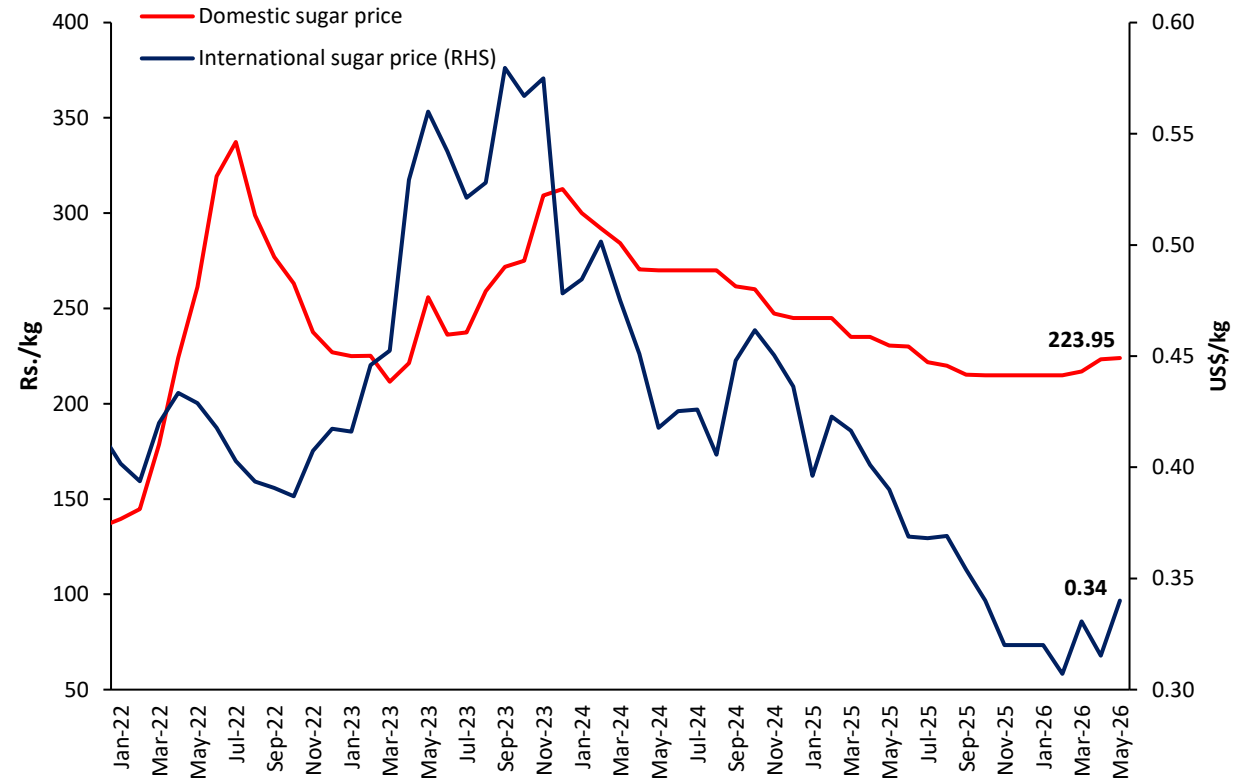
Sugar Production (MT) 10,721 **11,158**

Sugar Imports (MT) 269,766 **214,368**

Sugar Import Trend



Sugar Price Trend



International sugar prices have increased marginally in May 2026, driven by expectations of tighter global supplies, as a greater share of Brazil's sugarcane output was diverted to ethanol production

Data Sources: Sugar Companies, Sri Lanka Customs, World Bank

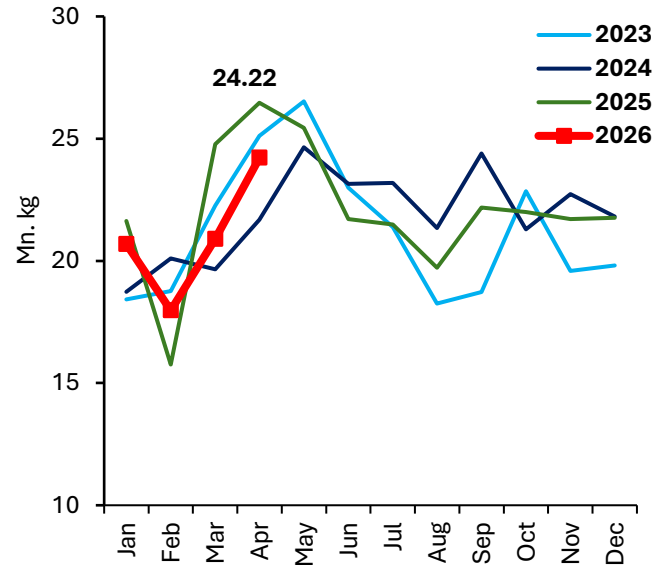
Livestock

	2025 March	2026 February	2026 March	
Production	Egg (mn)	312	293	304
	Chicken (000 MT)	25	22	22
Price	Egg-White (Rs./egg)	30.5	33.1	36.1
	Egg - Red (Rs./egg)	32.2	34.2	37.8
	Chicken (Rs./kg)	1121.0	1111.4	1318.6
Cost of Production	Egg (Rs./egg)	30.8-34.0	29.0-32.2	30.2-31.6
	Chicken (Rs./kg)	722.1	833.2	846.1

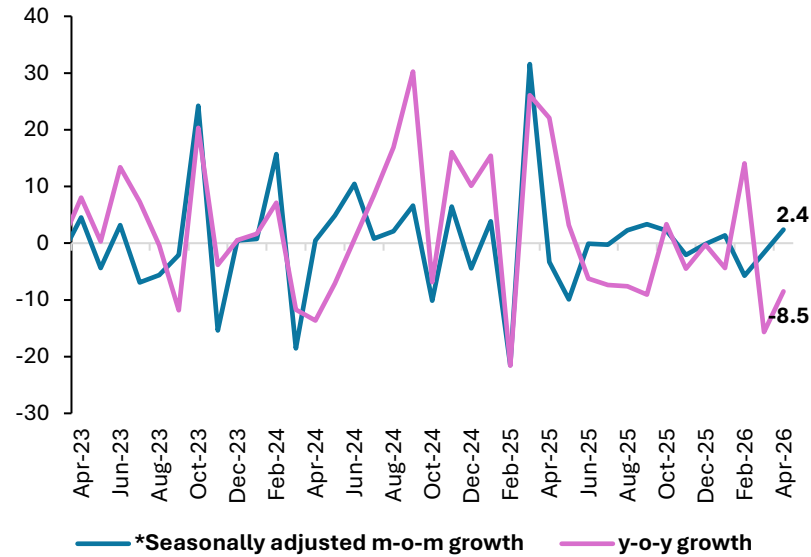
Feed Ingredients (Rs./kg)	2025 March	2026 February	2026 March
Maize	161.9	175.6	160.6
Soya bean meal	201.2	189.2	204.5
Fish meal	406.7-550.0	353.3-603.3	361.9-512.9
Rice polish	131.4	131.4	133.7

Tea

Tea Production

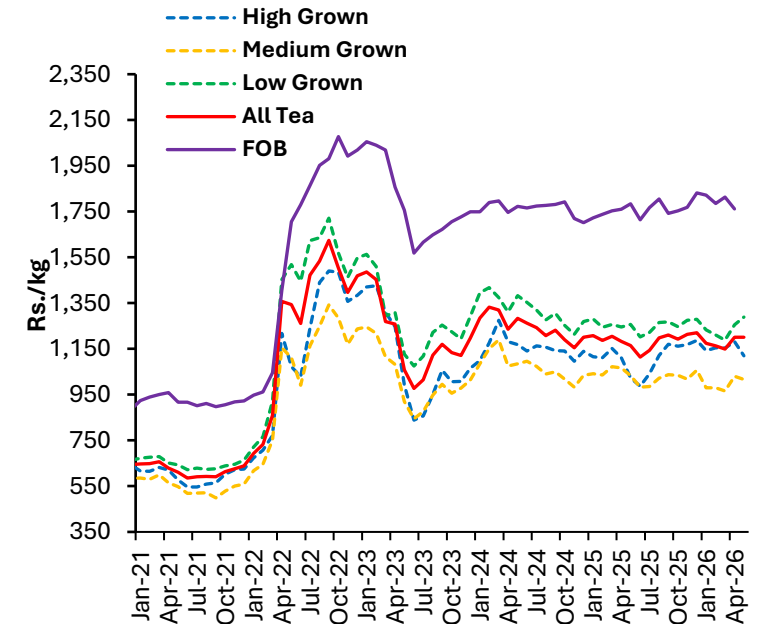


Tea Production Growth

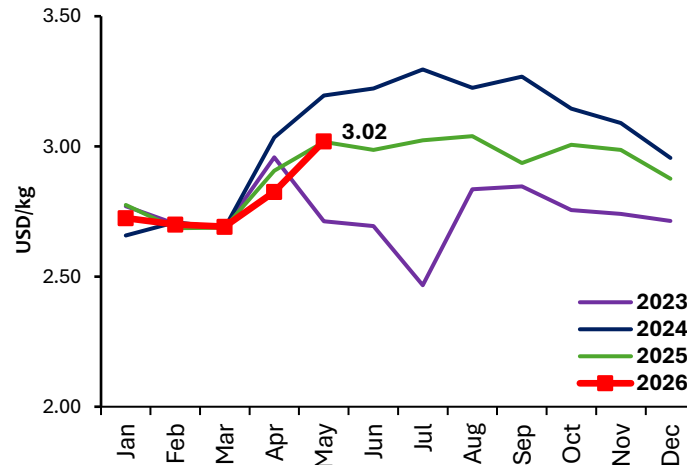


- Domestic tea production decreased by **8.5%** (y-o-y) during the month of April 2026 due to dry weather conditions and reduced fertilizer application during the previous quarter
- However, this marks a **2.4%** m-o-m (seasonally adjusted) growth, as conditions were more favourable compared to the previous month
- Global tea prices have increased in May 2026

Tea Auction Prices & FOB Prices



International Tea Prices

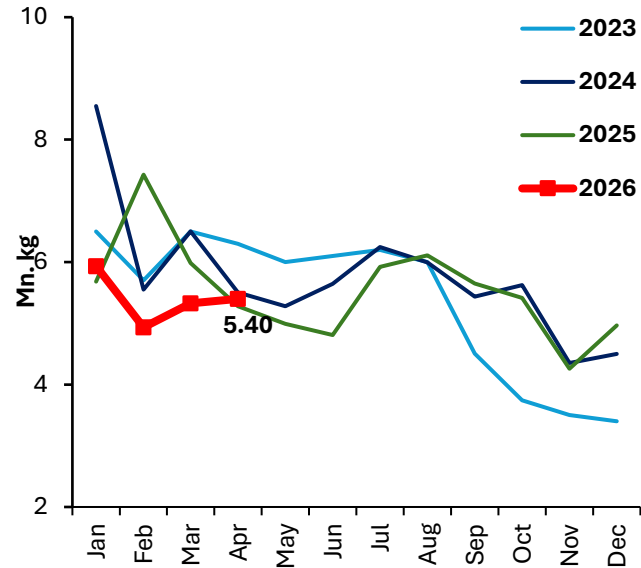


Tea Production (mn kg)	2025	2025 Jan-Apr	2026 Jan-Apr	Growth % (y-o-y)
High grown	56.2	20.2	19.8	(2.3)
Medium grown	47.7	16.5	15.4	(6.6)
Low grown	158.8	51.9	48.6	(6.4)
Total	262.8	88.6	83.8	(5.5)

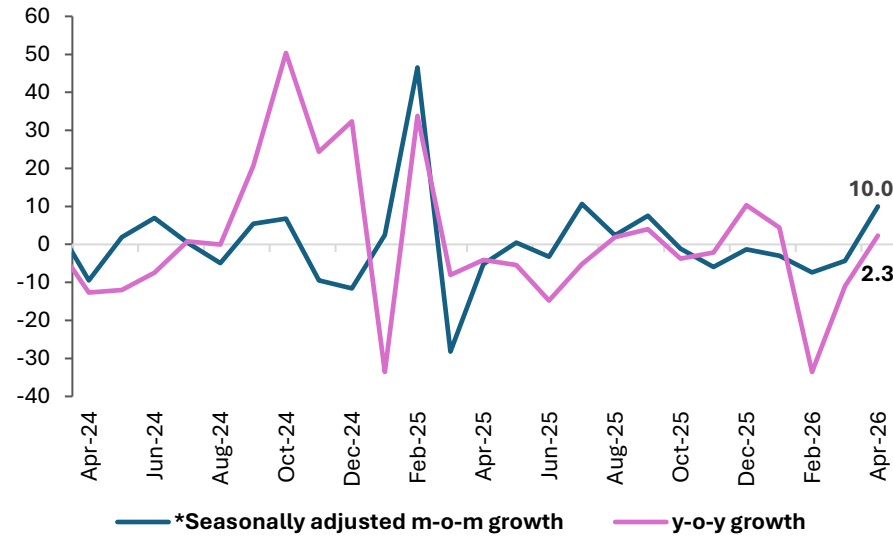
Sources: Sri Lanka Tea Board, Colombo Tea Brokers' Association, Sri Lanka Customs, Central Bank of Sri Lanka, World Bank
*Seasonally adjusted using X13 procedure

Rubber

Rubber Production



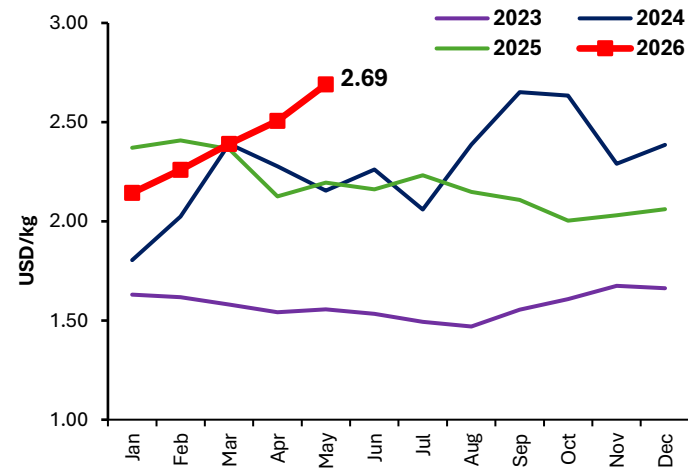
Rubber Production Growth



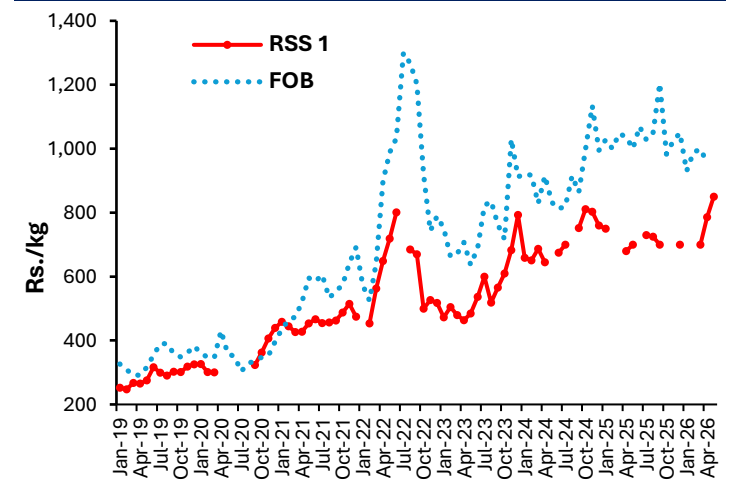
- Despite the cumulative decline in production during January–April, domestic rubber production recorded a year-on-year increase of **2.3%** in April 2026. Further, this is a **10.0%** m-o-m (seasonally adjusted) increase
- Global natural rubber prices continued to increase in May 2026 due to supply constrains amid higher demand, as geopolitical tensions and rising crude oil prices increased the cost of synthetic rubber

Rubber Production (mn kg)	2025	2025 Jan-Apr	2026 Jan-Apr	Growth %
Sheet Rubber	33.0	11.3	9.1	(19.8)
Crepe Rubber	11.1	4.0	3.9	(3.9)
Other	22.4	9.0	8.6	(4.2)
Total	66.5	24.4	21.6	(11.4)

International Rubber Prices



Rubber Auction Prices & FOB Prices

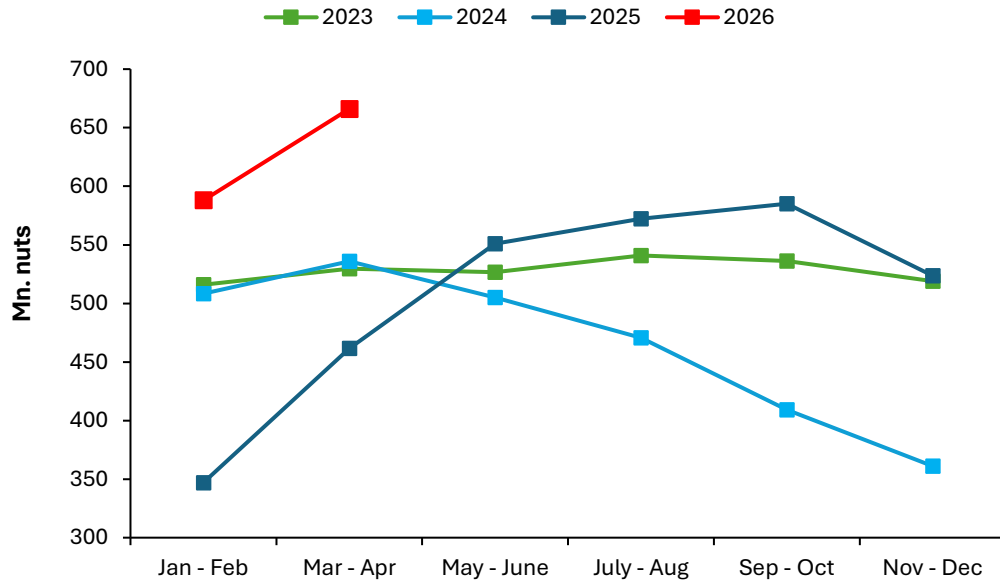


*Rubber, RSS3

Sources: Rubber Development Department, Ceylon Chamber of Commerce, Sri Lanka Customs, Central Bank of Sri Lanka, World Bank
*Seasonally adjusted using X13 procedure

Coconut

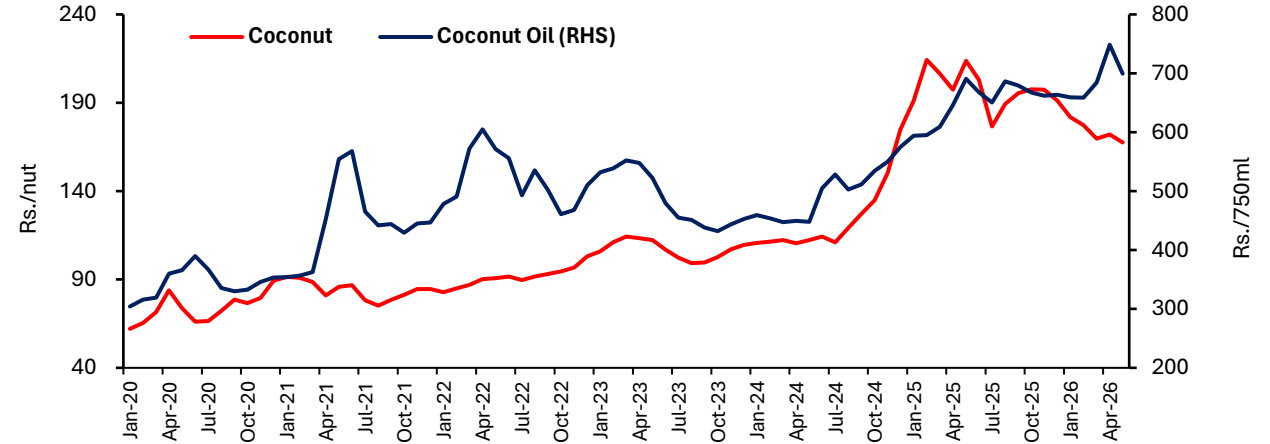
Coconut Production*



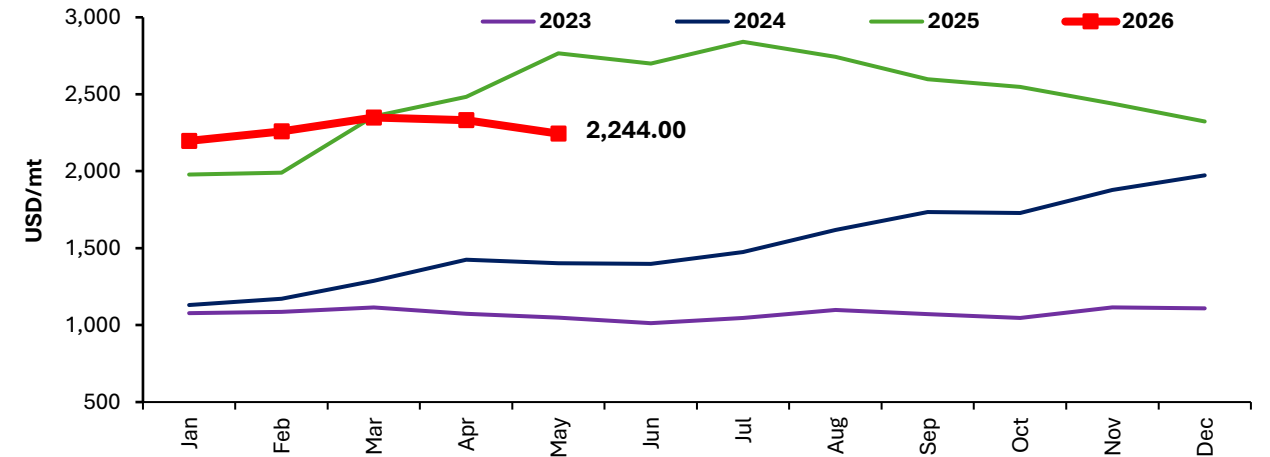
*From January 2026 onwards total nut production is based on bi-monthly data estimation of the Coconut Research Institution

Coconut Production	2025	2025 (Jan-Apr)	2026 (Jan-Apr)
Desiccated Nut (MT)	34,381	6,011	12,742
Coconut Oil (MT)	33,696	10,118	16,969
Local consumption (Mn Nuts)	1,496	399	533

Retail Price of Coconut and Coconut Oil



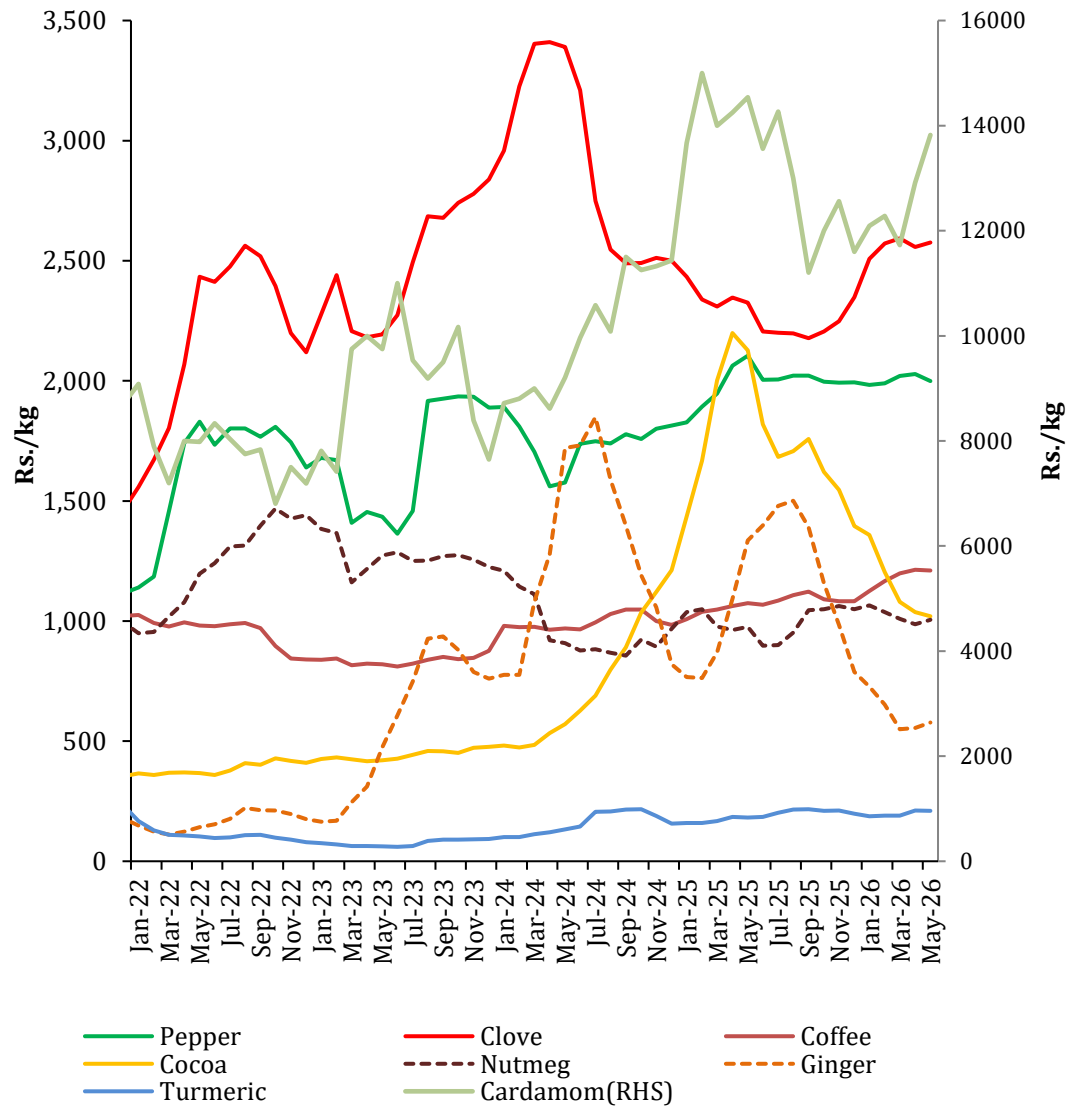
International Coconut Oil Prices



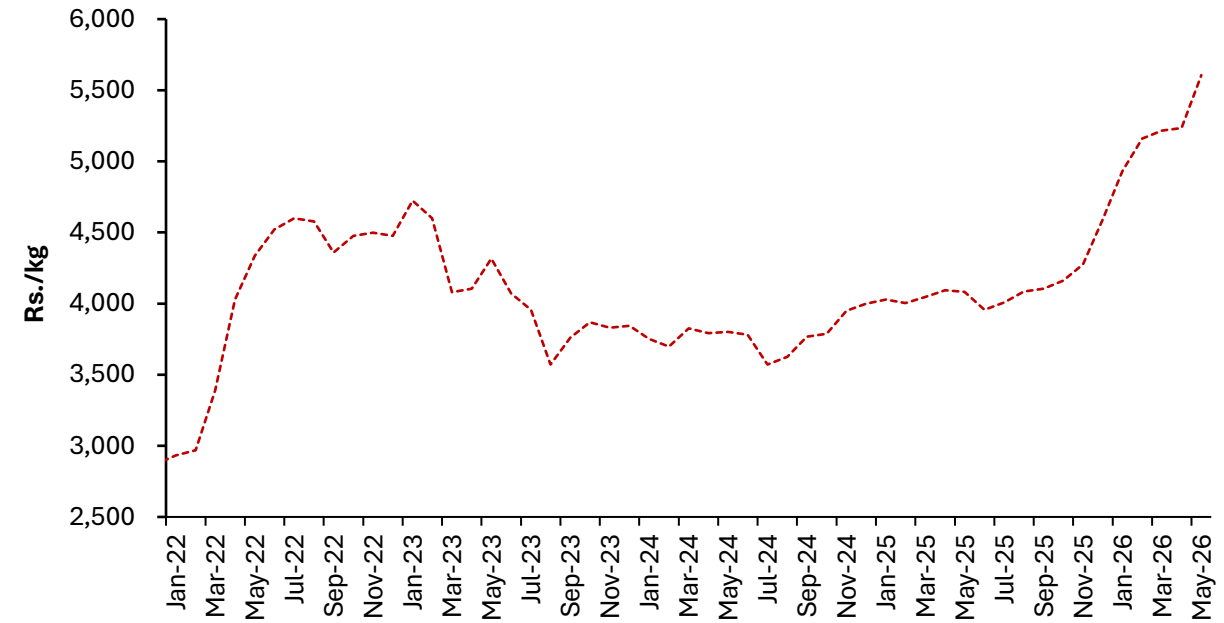
International coconut oil prices decreased slightly in May 2026 compared to previous month

Other Export Agriculture

Farmgate/Producer Prices of Selected Export Agriculture Crops



Farmgate/Producer Price of Cinnamon



- In May 2026, the market prices of export crops such as, clove, cardamom, nutmeg, cinnamon and ginger prices have increased (m-o-m) while pepper, coffee, cocoa, and tumeric declined
- Earnings from exports of spices declined marginally in May 2026 (y-o-y) mainly driven by weak performance of Pepper exports

Import Trends of Agricultural Input

Imports	2024	2025	2025 Jan-Apr	2026 Jan-Apr
---------	------	------	--------------	--------------

Plants and Seeds

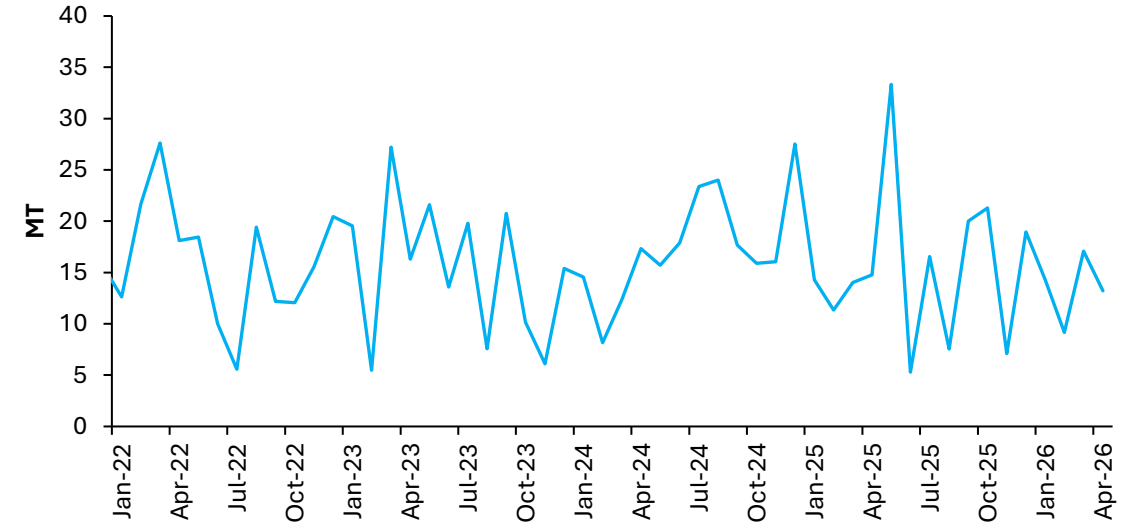
Vegetable seeds (MT)	211	185	54	54
Potato seed (MT)	773	1,002	100	-
Plants & parts (MT)	6,874	5,297	1,521	2,420
Live trees and other plants (No. '000)	1,248	972	266	335

Fertilizers (MT '000)

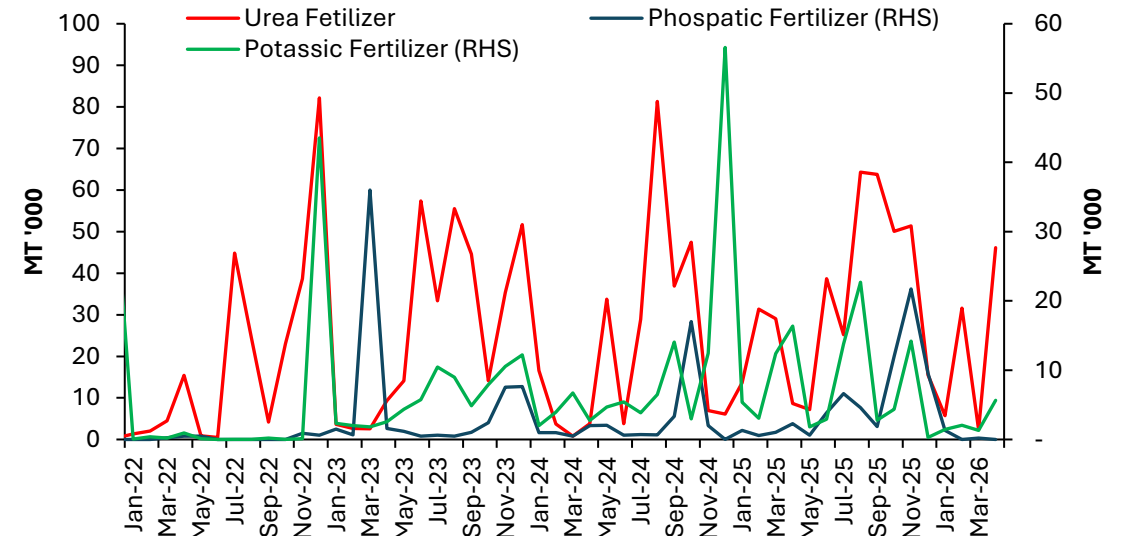
Urea	270	399	83	86
Other nitrogenous fertilizers	68	95	35	12
Phosphatic	31	66	5	2
Potassic	122	100	37	10
Other fertilizers	16	53	6	10

Import Trends of Selected Agricultural Inputs

Vegetable Seeds

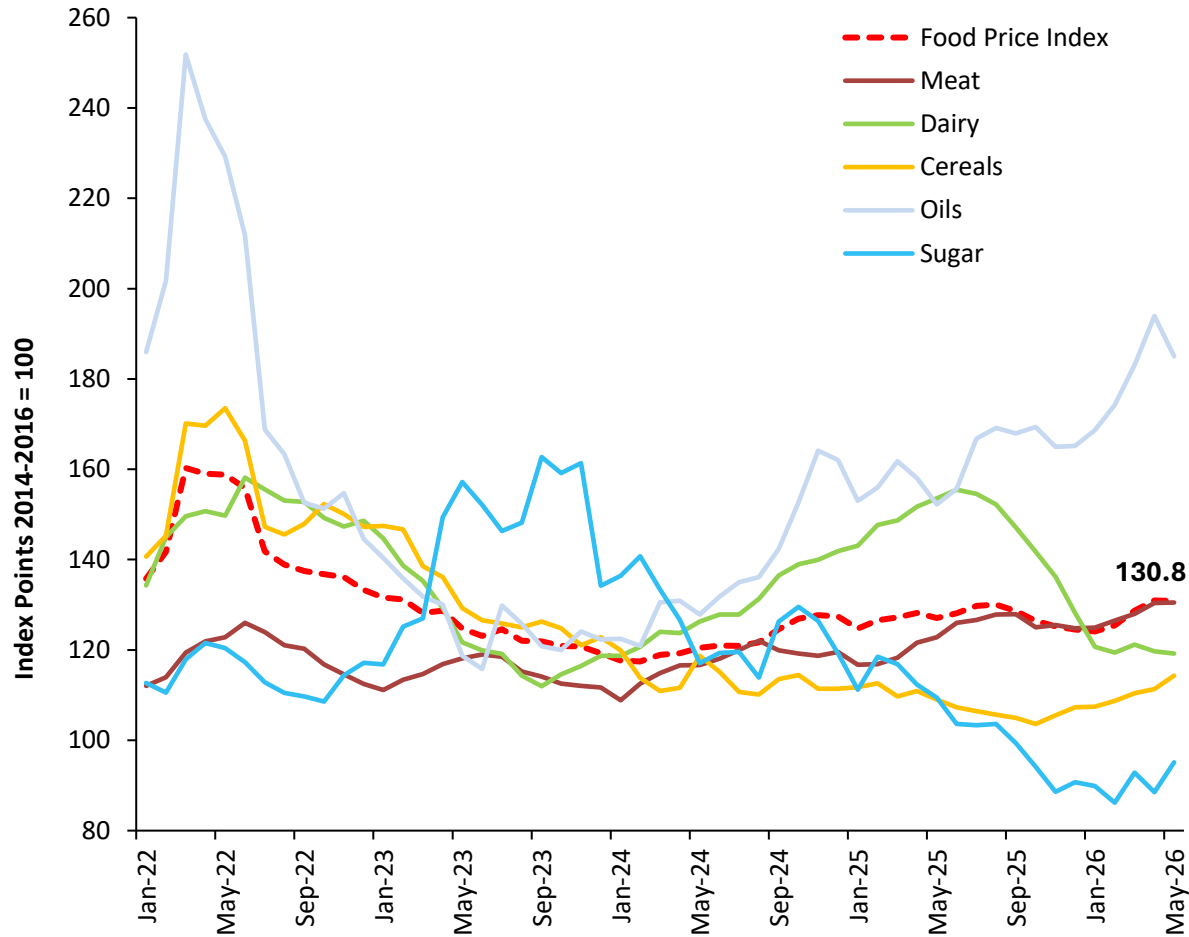


Fertilizers

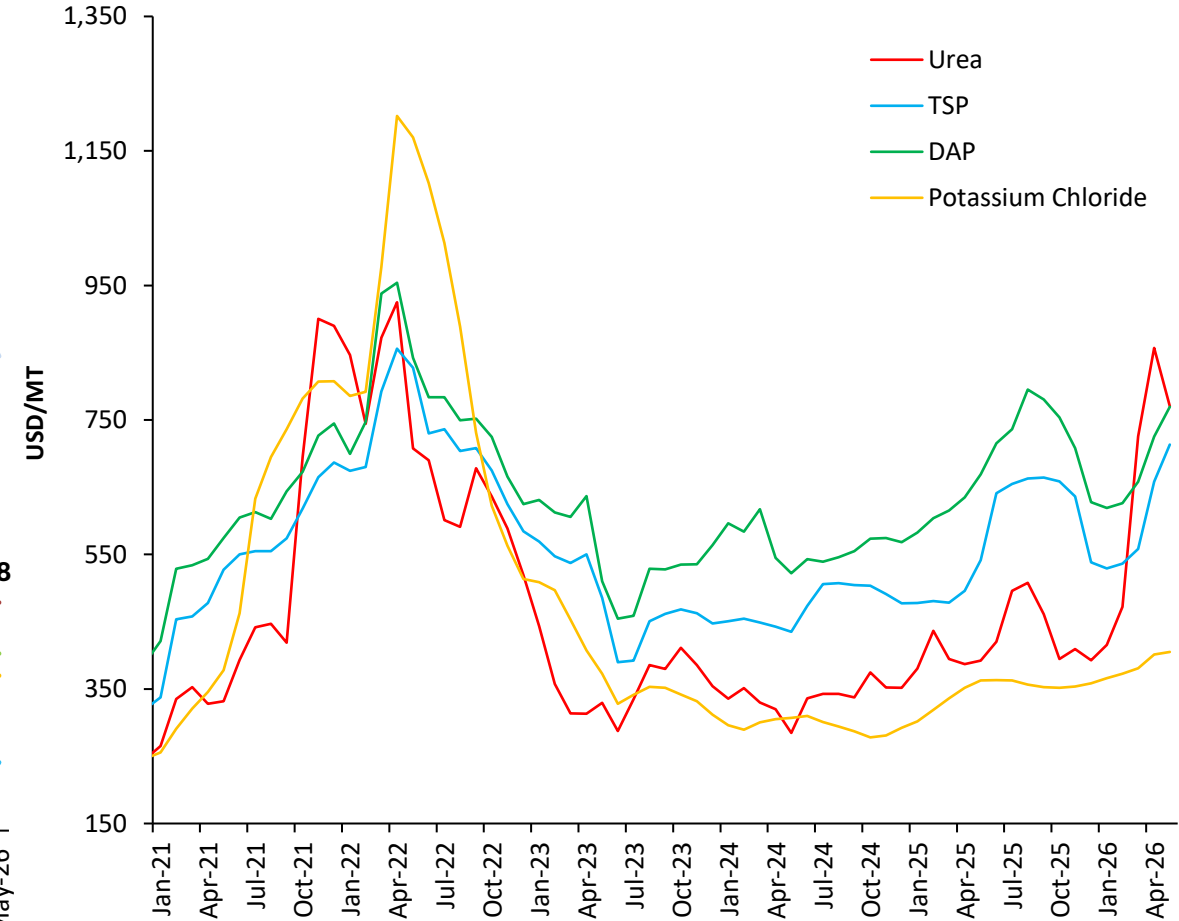


International Agricultural Commodity Prices

FAO Food Price Index



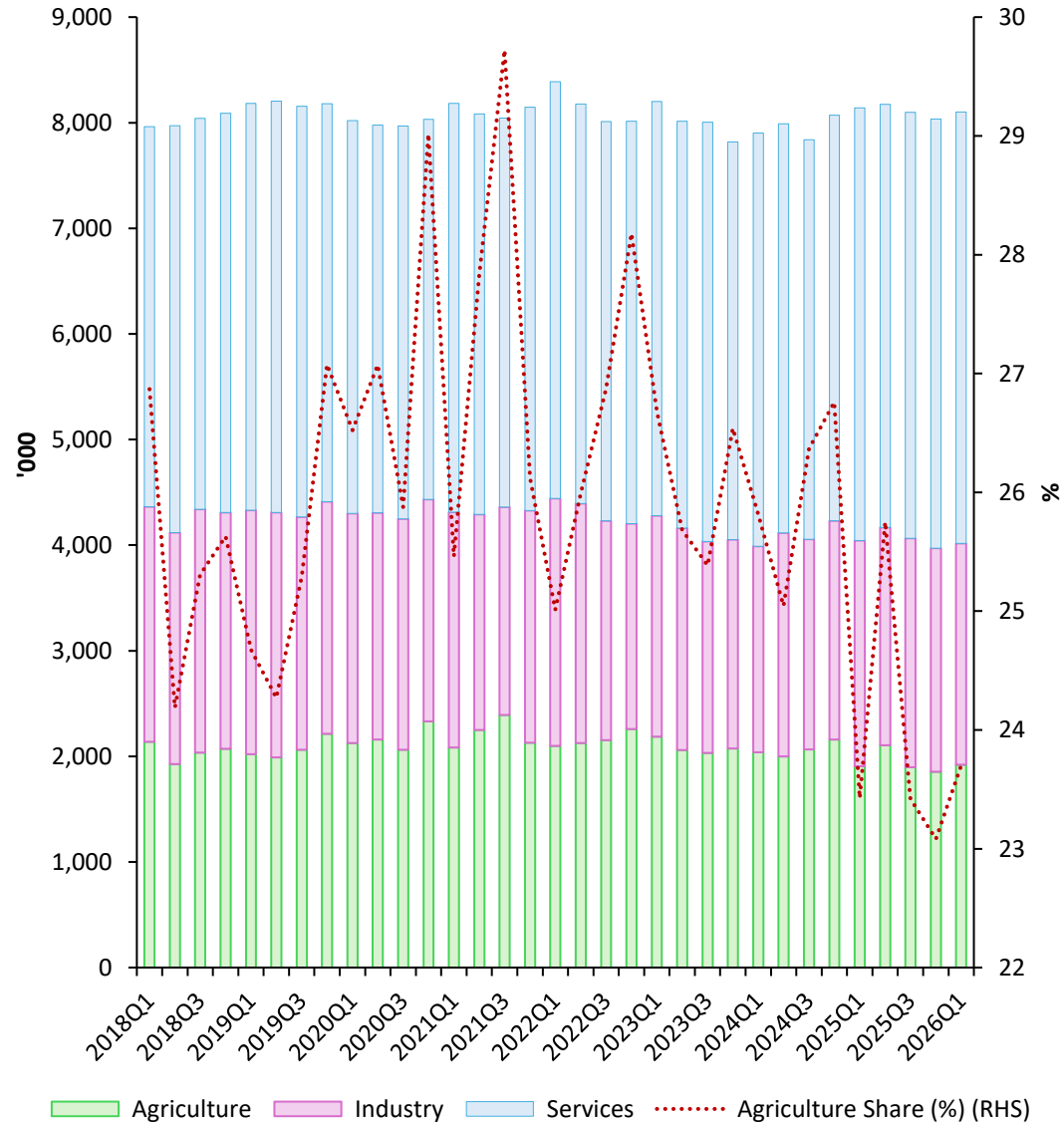
International Fertilizer Prices



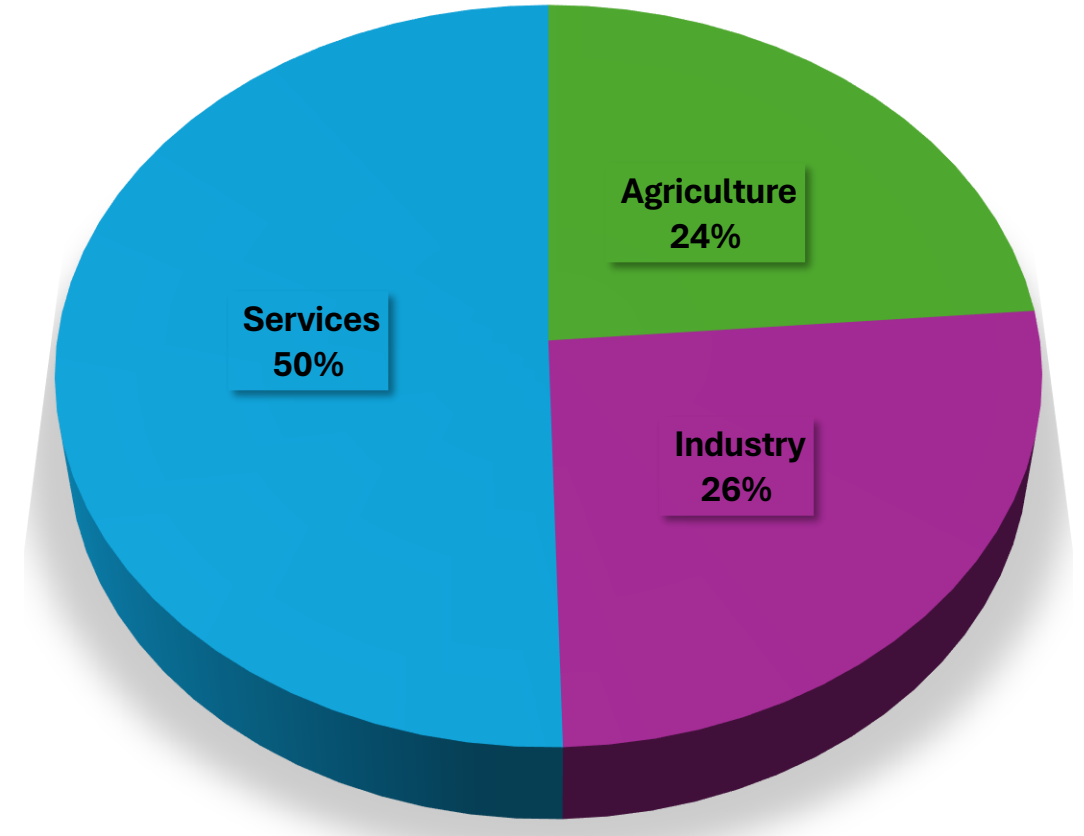
In May 2026, the FAO Food Price Index decreased marginally compared to previous month, as increases in cereals and sugar were offset by declines in vegetable oils and dairy products

Employment in Agriculture

Sector-wise Employed Population



Sector-wise Employed Population – 2026 Q1



The agricultural sector accounted for around 24% of the total employed population in Q1 2026



Datasets are accessible via:

<https://www.cbsl.gov.lk/en/statistics/statistical-tables/real-sector/production-indicators>



**Economic Research Department
Central Bank of Sri Lanka**

**The figures for 2024 and 2025 provided in this data summary are highly provisional.*