

### HIGHLIGHTS

**Paddy production** for 2025/26 Maha season, based on the sown extent as of end January 2026, is forecasted at 2.64 million metric tons, a 3.7% decline from the previous Maha season



**Domestic tea production** increased by 15.2% (y-o-y) during the month of February 2026, whilst global tea prices remained broadly stable during the first quarter of 2026



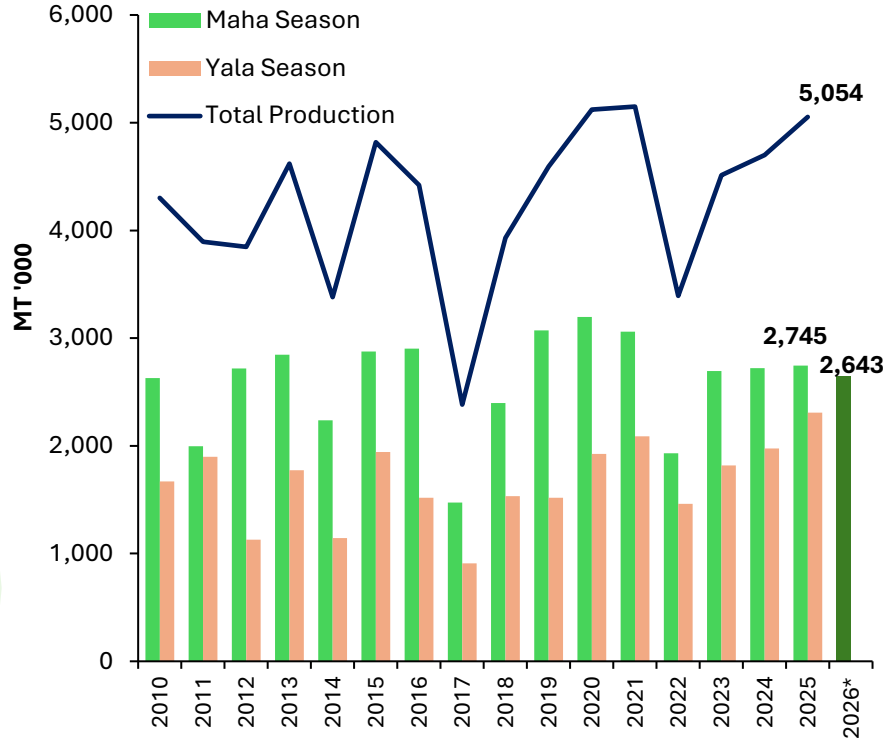
**Local rubber production** decreased in February 2026 by 33.6% (y-o-y) due to extensive dry weather conditions



**Total marine fish production** declined (y-o-y) in both January and February 2026



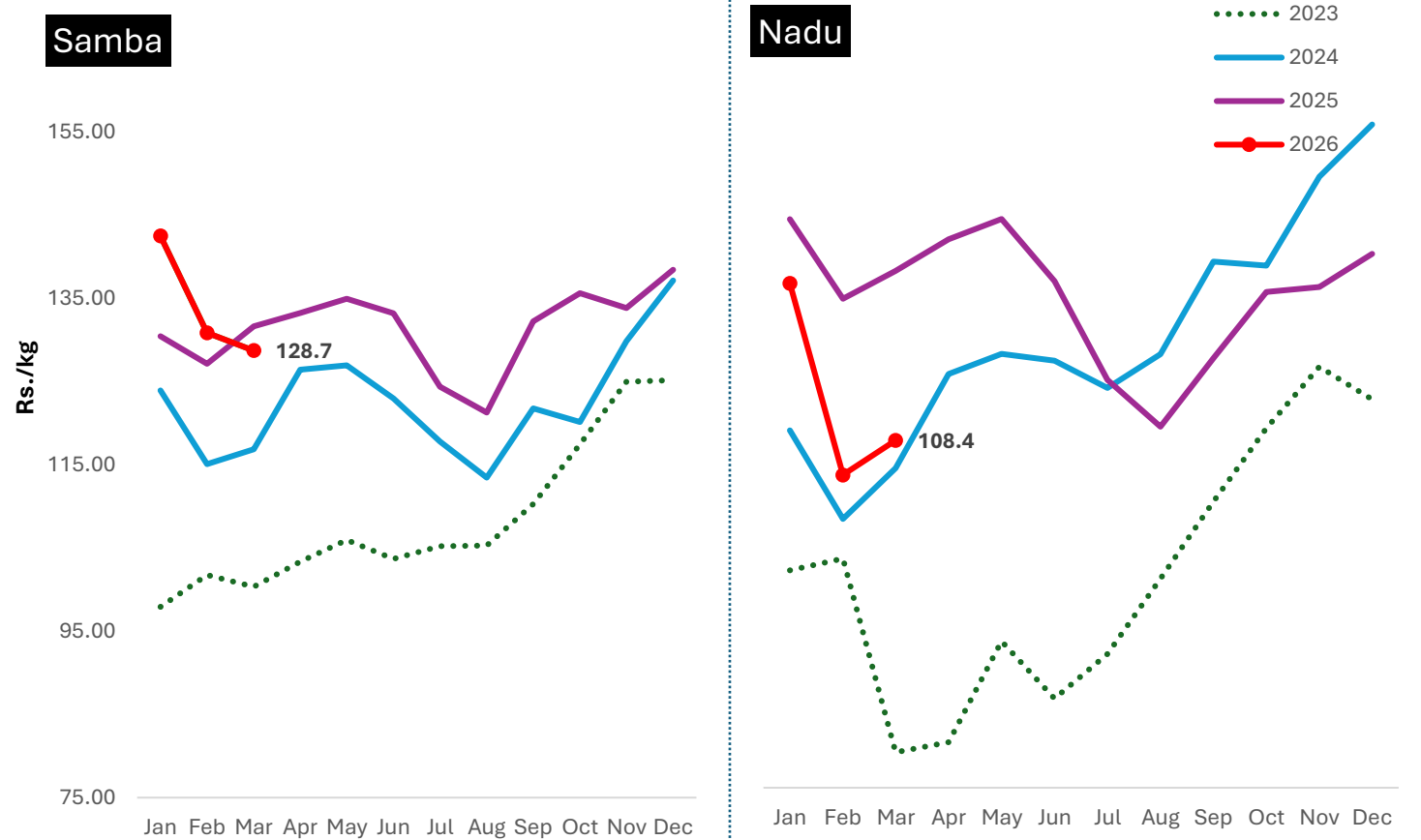
# Paddy Production



\*2025/26 Maha season production is based on the Department of Agriculture forecast

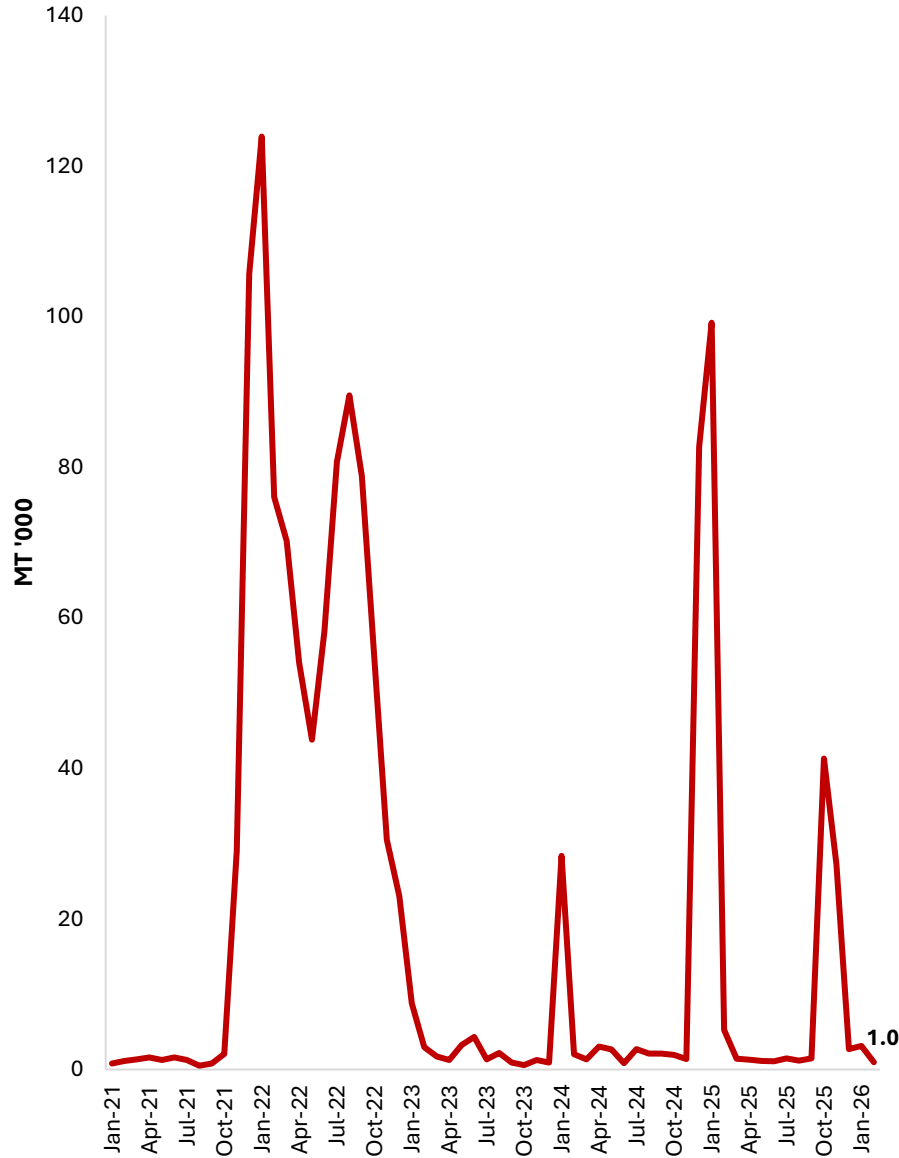
Season	2023 (mn mt)	2024 (mn mt)	2025 (mn mt)	Growth % (y-o-y)
Maha	2.70	2.72	2.74	0.9
Yala	1.82	1.98	2.31	16.8
Annual	4.51	4.70	5.05	7.6

# Farmgate/Producer Prices of Paddy



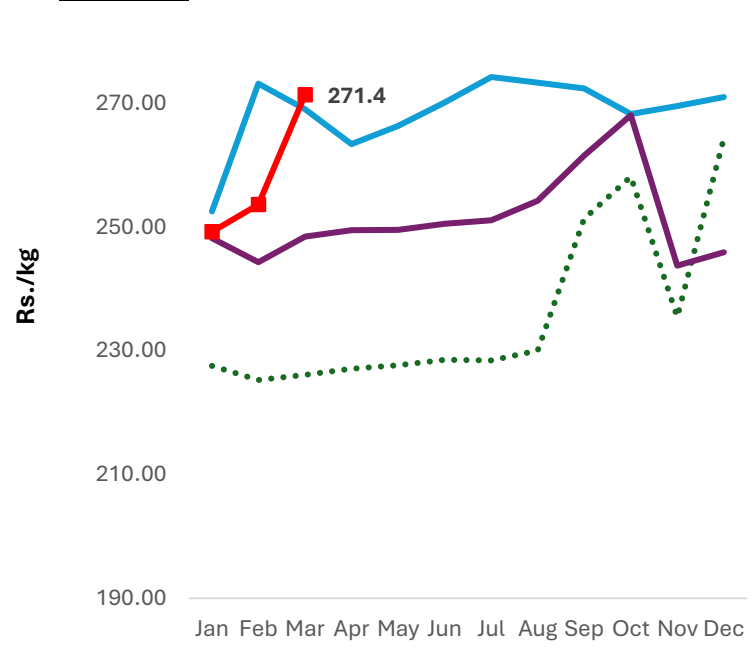
- Paddy production for 2025/26 Maha season is estimated as **2.64 million metric tons (3.7% decrease from the previous Maha season)** based on the sown extent as of end January 2026. This decline also includes crop damage caused by Cyclone Ditwah
- Annual paddy production for the year 2025 recorded as **5.05 million metric tons (7.6% increase from the previous year)**

# Rice Imports

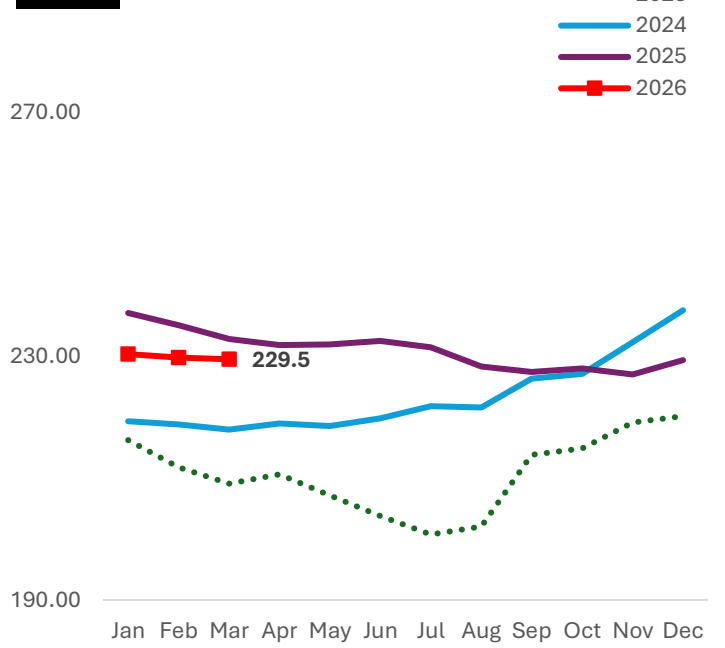


# Retail Rice Prices

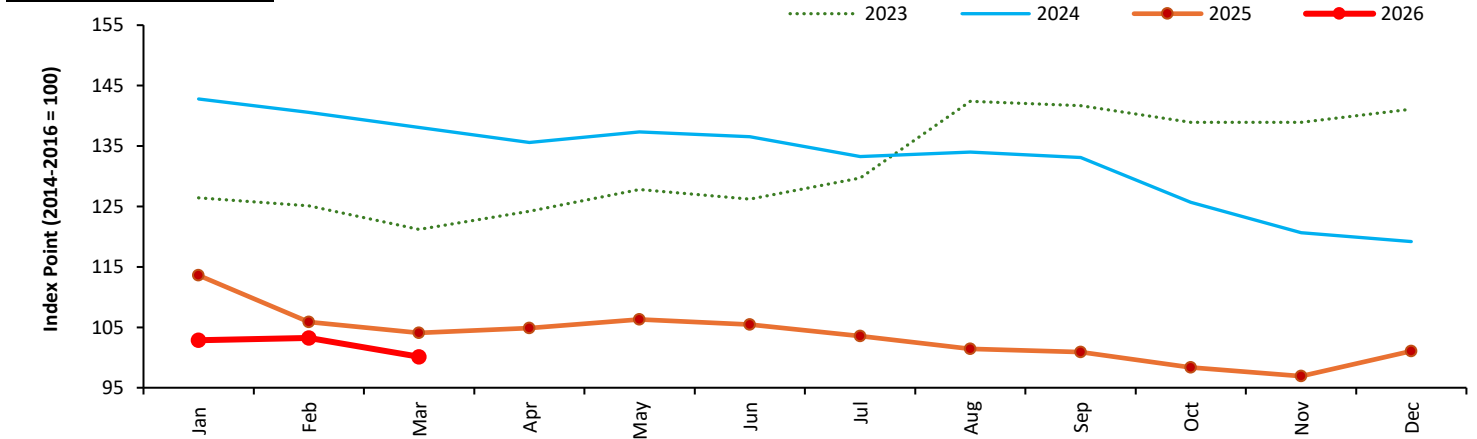
## Samba



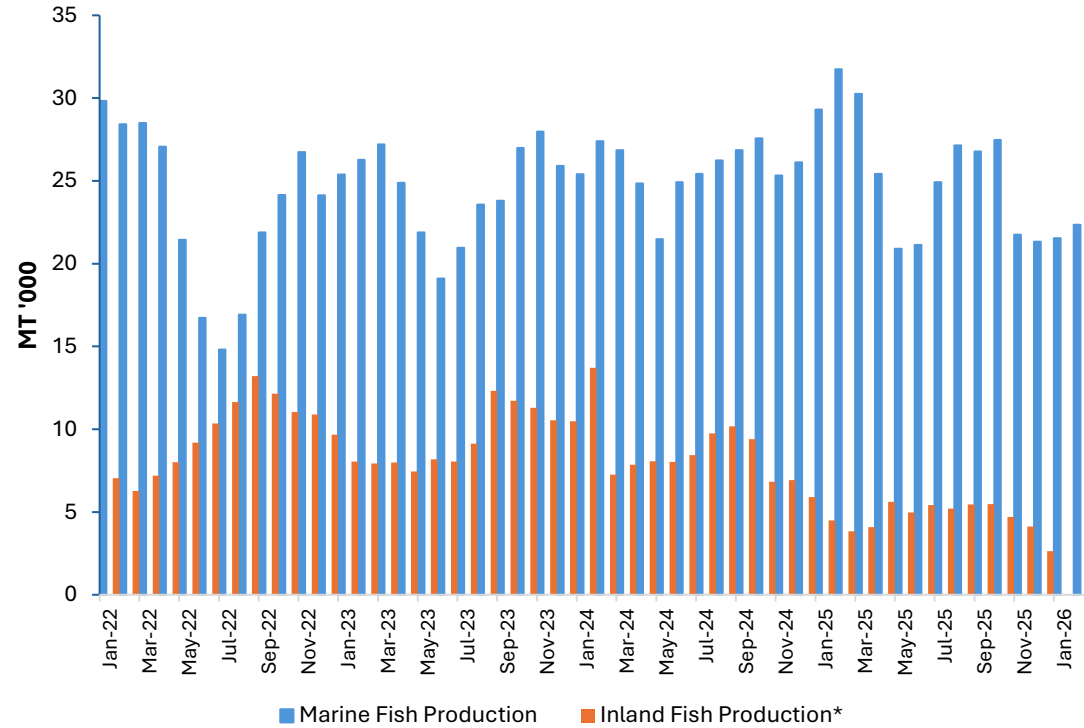
## Nadu



## FAO All Rice Price Index



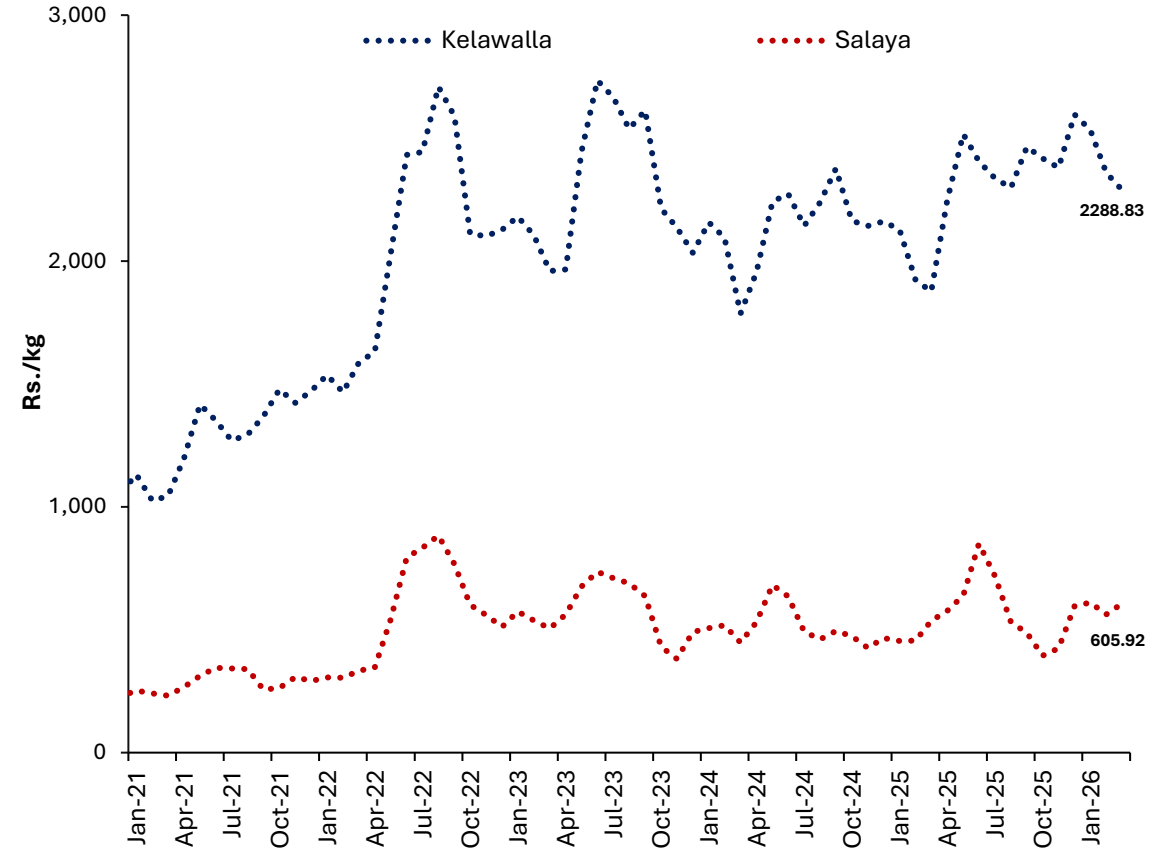
## Fish Production



	2024	2025	2026 Jan-Feb
<b>Marine Fish Production (MT '000)</b>	<b>308</b>	<b>308</b>	<b>43.9</b>

\*Inland Fish production data are not available since Jan 2026

## Retail Fish Prices



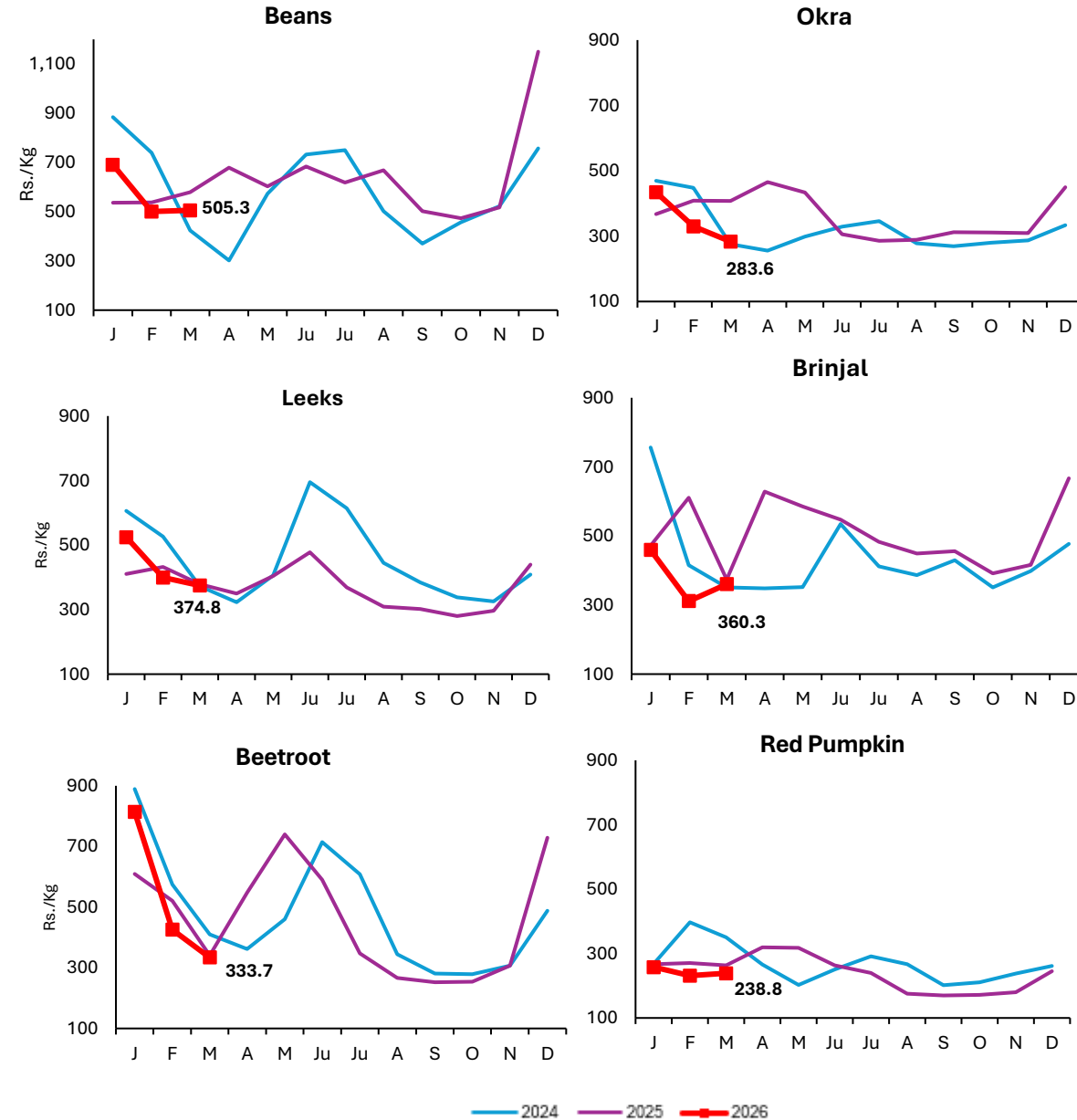
- Marine fish production during the year 2025 remained same as the previous year
- However, according to highly provisional data, total marine fish production declined (y-o-y) in both January and February 2026

Sources: Ministry of Fisheries, Department of Census and Statistics

## Vegetable Production (MT)

	22/23 Maha	2023 Yala	23/24 Maha	2024 Yala	24/25 Maha	2025 Yala	2025 Yala Y-o-Y Change
<b>Up Country</b>							
<b>Tomatoes</b>	46,244	34,169	39,293	34,945	28,480	<b>33,012</b>	↓
<b>Cabbage</b>	52,310	47,773	58,552	48,242	41,811	<b>20,495</b>	↓
<b>Carrot</b>	40,084	25,267	48,836	24,374	25,604	<b>18,886</b>	↓
<b>Beetroot</b>	17,178	21,444	17,332	20,034	15,825	<b>12,033</b>	↓
<b>Raddish</b>	26,955	27,557	40,159	27,567	31,271	<b>15,974</b>	↓
<b>Beans</b>	41,139	25,287	36,345	26,128	20,468	<b>26,225</b>	↑
<b>Low Country</b>							
<b>Luffa</b>	24,852	18,417	22,225	18,521	20,465	<b>18,670</b>	↑
<b>Okra</b>	38,984	31,351	37,620	35,003	40,296	<b>32,681</b>	↓
<b>Brinjal</b>	80,637	54,450	69,584	54,660	64,545	<b>55,578</b>	↑
<b>Cucumber</b>	21,013	26,603	17,937	27,161	18,982	<b>15,388</b>	↓
<b>Red pumpkin</b>	59,163	41,779	46,890	42,565	48,389	<b>42,975</b>	↑
<b>Ash plantain</b>	35,369	22,833	33,783	24,477	29,506	<b>22,124</b>	↓
<b>Long bean</b>	35,395	27,456	35,539	28,855	34,926	<b>29,515</b>	↑

## Retail Vegetable Prices

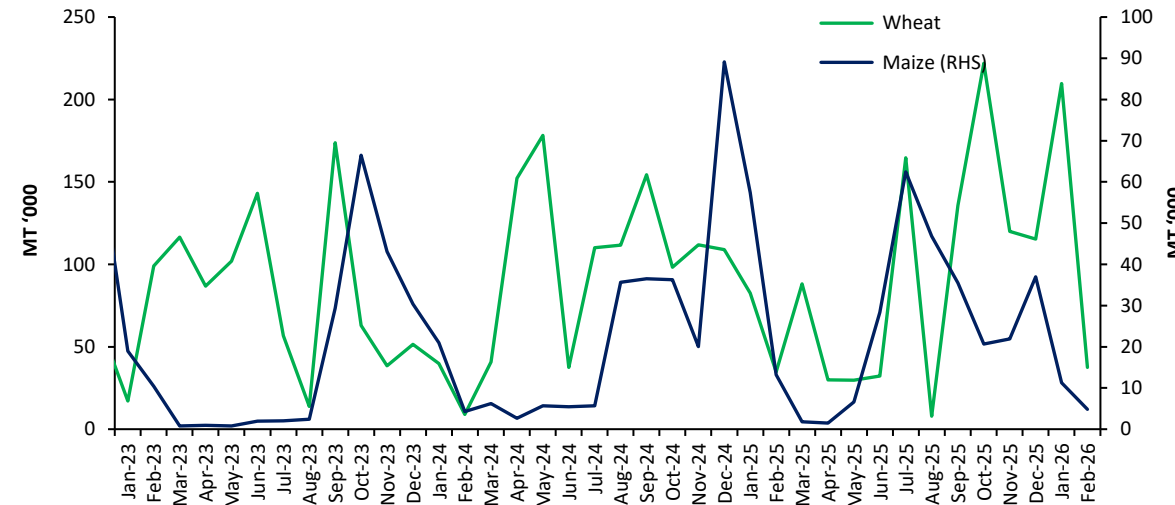
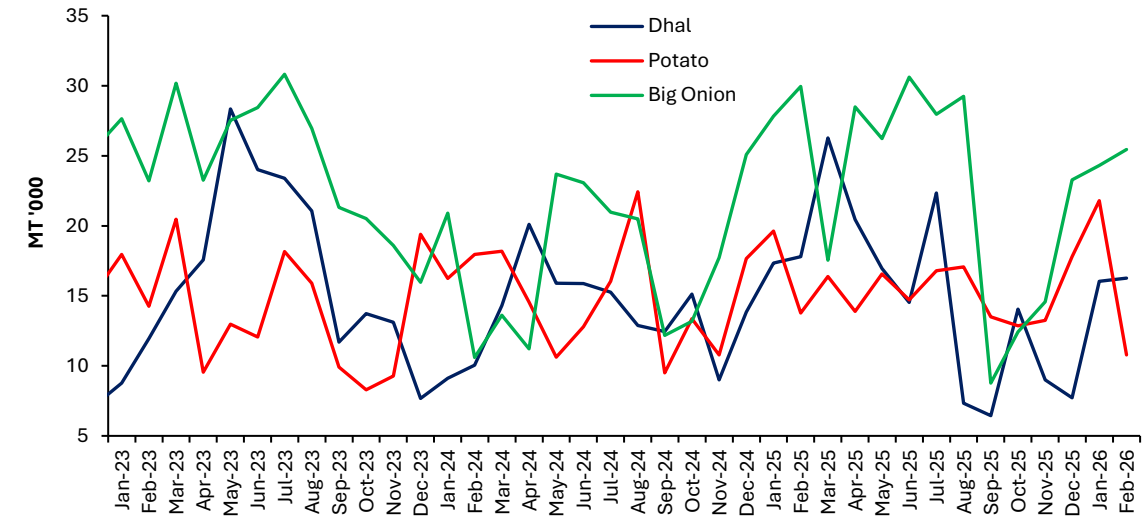


## Other Field Crops

	22/23 Maha	2023 Yala	23/24 Maha	2024 Yala	24/25 Maha	2025 Yala	2025 Yala Y-o-Y Change
<b>Potato</b>	19,723	21,026	21,291	20,916	15,010	<b>14,360</b>	↓
<b>Red Onion</b>	26,673	22,678	24,762	19,749	24,440	<b>18,311</b>	↓
<b>Big Onion</b>	329	4,755	257	8,572	395	<b>20,994</b>	↑
<b>Green Chillie</b>	42,270	25,128	40,438	26,200	38,285	<b>23,136</b>	↓
<b>Cowpea</b>	7,022	5,779	5,955	5,458	6,307	<b>4,546</b>	↓
<b>Black gram</b>	8,346	1,437	8,518	1,828	7,224	<b>1,790</b>	↓
<b>Maize</b>	198,601	22,647	196,871	26,626	245,351	<b>26,705</b>	↑
<b>Ground Nut</b>	19,014	10,666	17,336	11,626	18,751	<b>10,594</b>	↓
<b>Gingelly</b>	2,701	8,651	2,210	8,293	1,675	<b>8,576</b>	↑
<b>Green gram</b>	6,940	5,514	6,156	8,909	6,754	<b>9,089</b>	↑

Imports (MT)	2024	2025	2025 Jan - Feb	2026 Jan - Feb
Dhal	163,881	180,225	<b>35,135</b>	<b>32,295</b>
Potato	180,121	186,145	<b>33,403</b>	<b>32,578</b>
Big Onion	212,720	276,862	<b>57,754</b>	<b>49,753</b>

### Import Trend of Selected Food Items



# Sugar

	2025 (Jan-Feb)	2026 (Jan-Feb)
--	----------------	----------------

Sugar Production (MT)      2,702      **2,799**

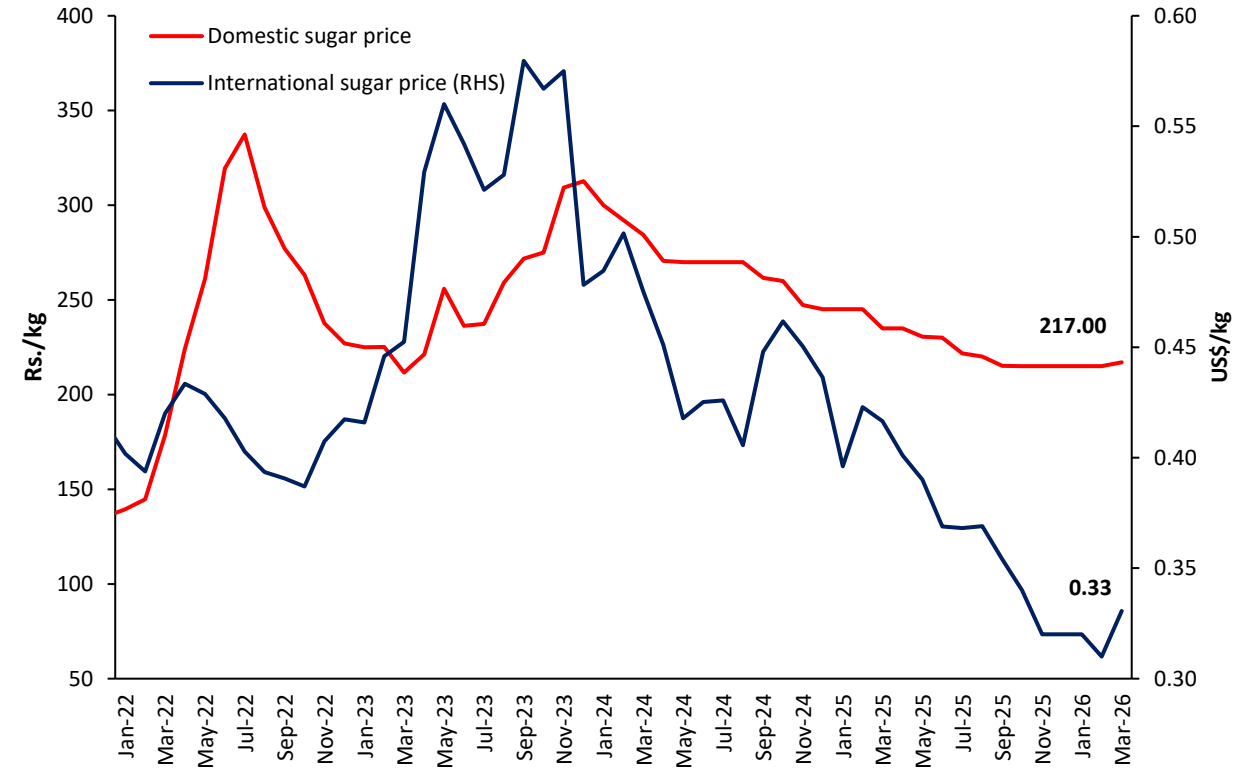
	2025 (Jan-Feb)	2026 (Jan-Feb)
--	----------------	----------------

Sugar Imports (MT)      144,135      **62,034**

## Sugar Import Trend



## Sugar Price Trend



**International sugar prices increased in March 2026 alongside higher crude oil prices, as expectations grew that Brazil would divert more sugarcane towards ethanol production in the upcoming harvesting season**

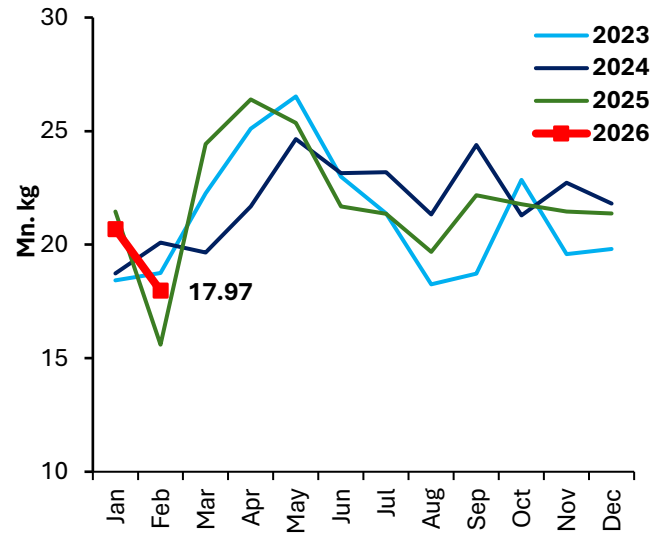
## Livestock

	2025 January	2025 December	2026 January	
<b>Production</b>	Egg (mn)	302	298	<b>295</b>
	Chicken (000 MT)	22	25	<b>24</b>
<b>Price</b>	Egg-White (Rs./egg)	33.6	36.6	<b>31.3</b>
	Egg - Red (Rs./egg)	35.7	39.7	<b>34.0</b>
	Chicken (Rs./kg)	1019.0	1094.5	<b>1095.7</b>
<b>Cost of Production</b>	Egg (Rs./egg)	30.4-35.1	29.1-34.4	<b>29.0-32.2</b>
	Chicken (Rs./kg)	743.4	790.0	<b>811.8</b>

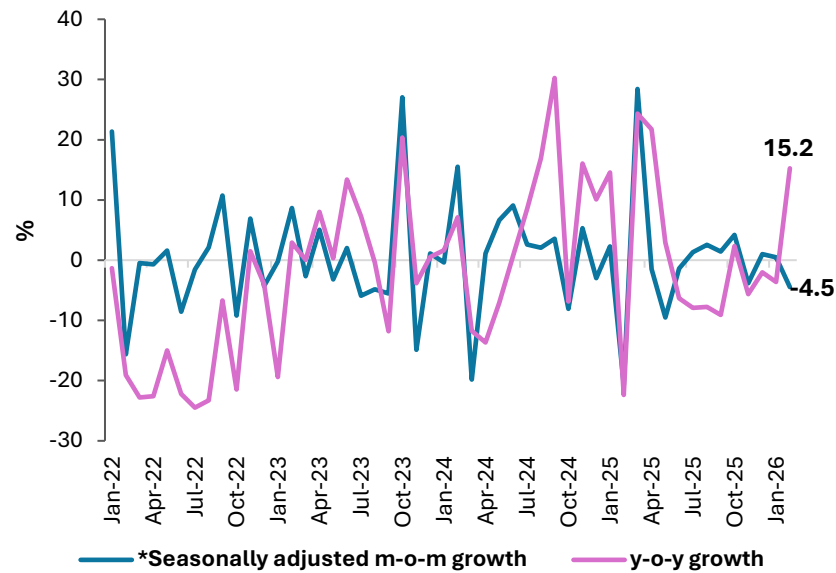
Feed Ingredients (Rs./kg)	2025 January	2025 December	2026 January
Maize	161.9	193.9	<b>183.2</b>
Soya bean meal	201.2	227.6	<b>195.6</b>
Fish meal	406.7-550.0	480.0-610.0	<b>403.3-610.0</b>
Rice polish	131.4	131.0	<b>133.8</b>

# Tea

### Tea Production

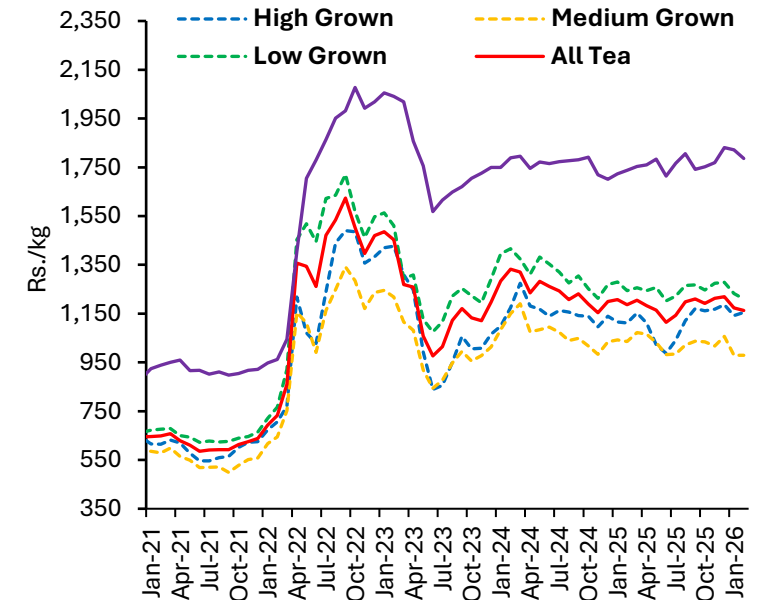


### Tea Production Growth

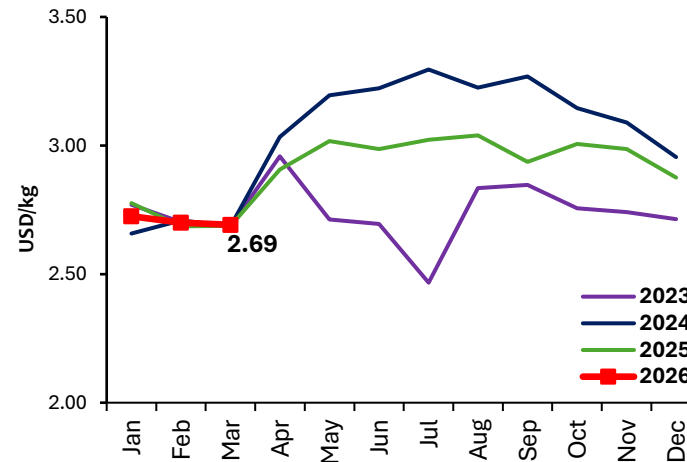


- Domestic tea production increased by **15.2%** (y-o-y) during the month of February 2026, partially due to base effect. However, this is a **4.5%** m-o-m (seasonally adjusted) contraction
- Global tea prices remained broadly stable during the first quarter of 2026

### Tea Auction Prices & FOB Prices



### International Tea Prices

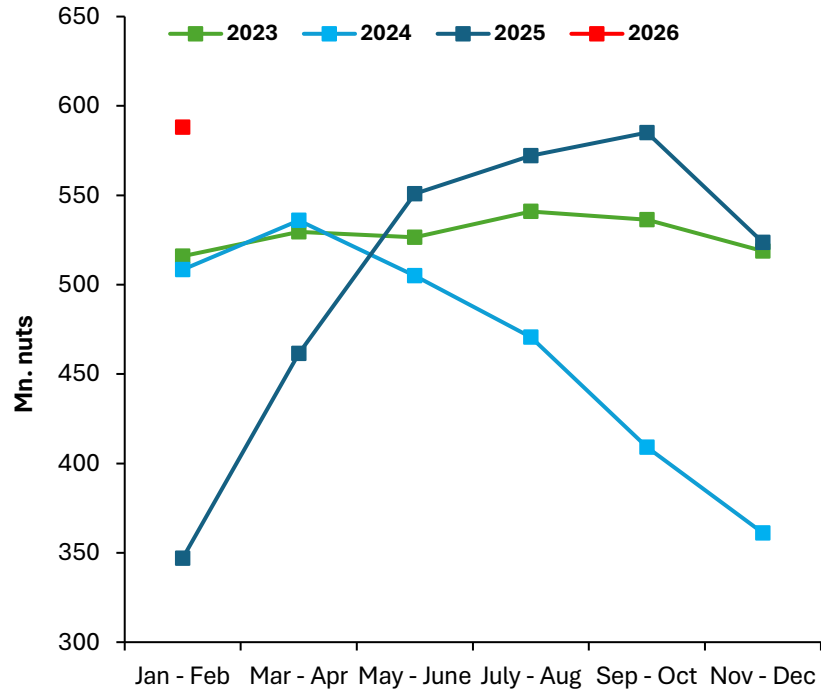


Tea Production (mn kg)	2025	2025 Jan-Feb	2026 Jan-Feb	Growth %
High grown	56.2	8.1	8.8	7.9
Medium grown	47.7	6.1	6.3	3.19
Low grown	158.8	22.9	23.6	3.3
<b>Total</b>	<b>262.8</b>	<b>37.1</b>	<b>38.7</b>	<b>4.3</b>



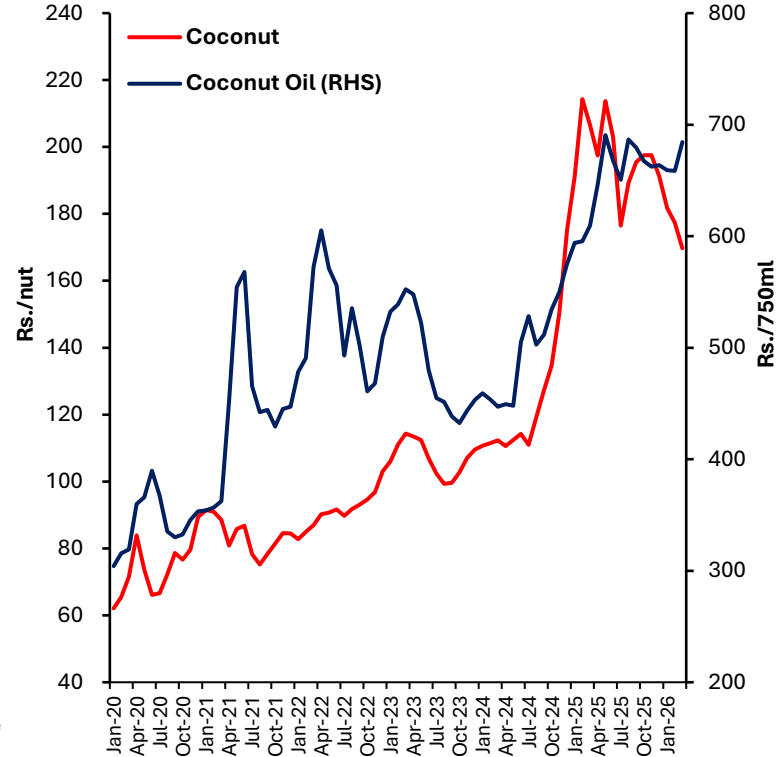
# Coconut

### Coconut Production\*

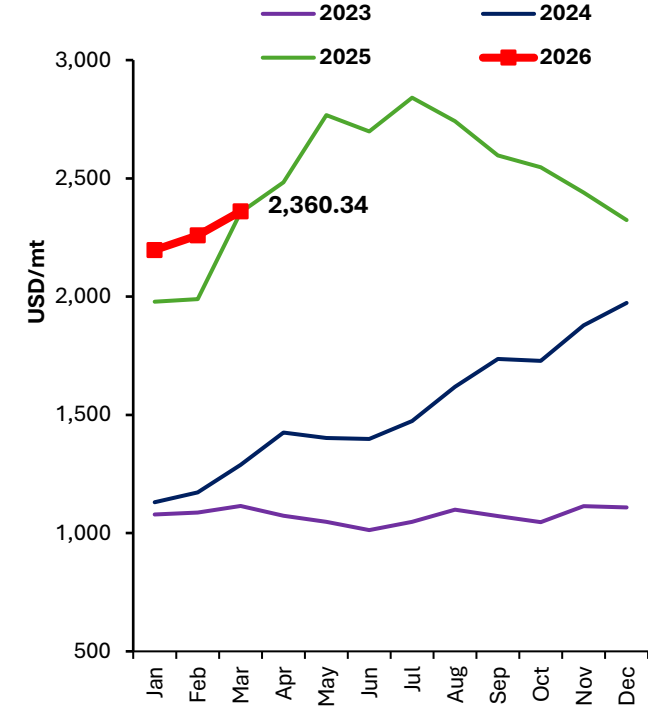


\*From January 2026 onwards total nut production is based on bi-monthly data estimation of the Coconut Research Institute

### Retail Price of Coconut and Coconut Oil



### International Coconut Oil Prices



Coconut Production	2025	2025 (Jan-Feb)	2026 (Jan-Feb)
Desiccated Nut (MT)	34,381	2,657	6,799
Coconut Oil (MT)	33,696	3,505	6,548
Local consumption (Nuts)	1,496	174	133

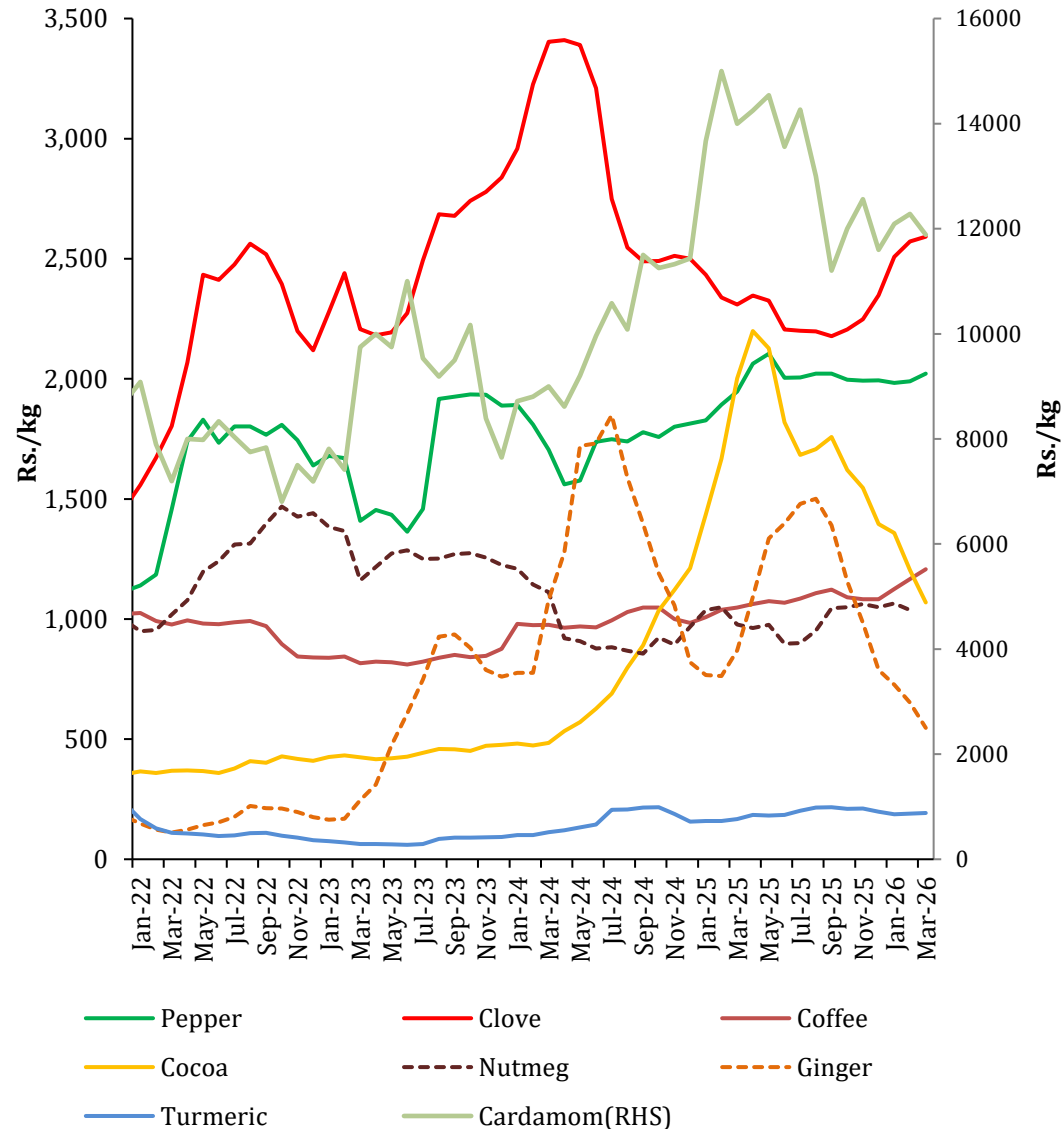
**Coconut production recorded a notable y-o-y increase in January-February 2026 which can also be attributed to base effect following the sharp production decline in early 2025**

**International coconut oil prices increased in March 2026, due to higher copra prices and shipping cost pressures**

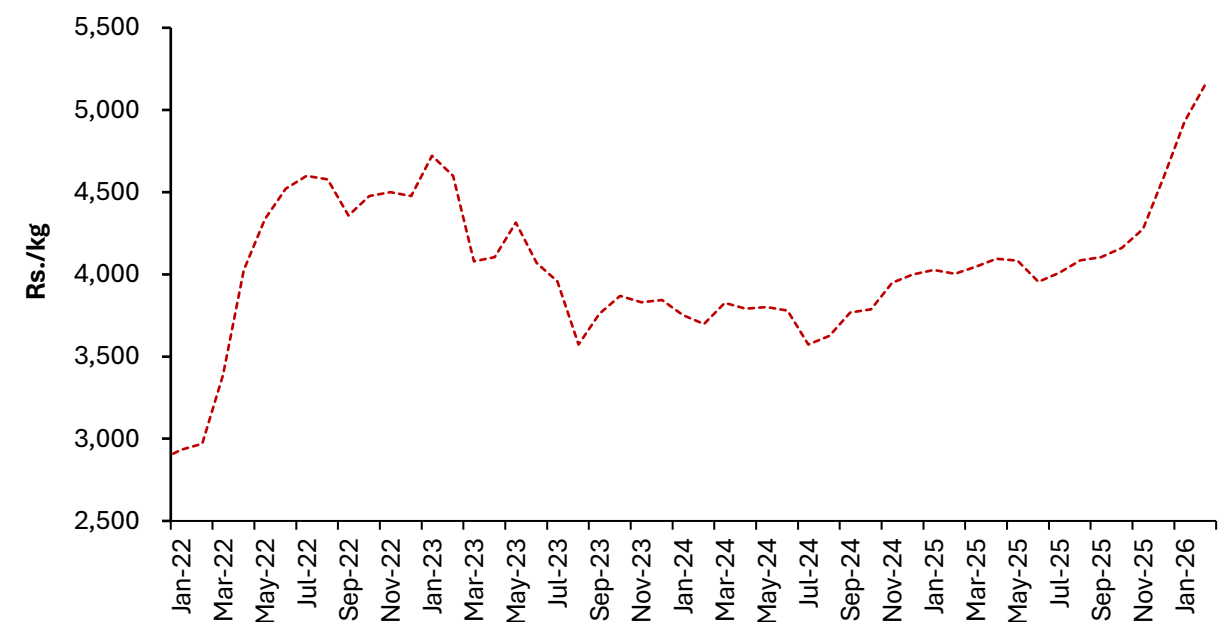
Sources: Coconut Development Authority, Coconut Research Institute, Department of Census and Statistics, World Bank

# Other Export Agriculture

Farmgate/Producer Prices of Selected Export Agriculture Crops



Farmgate/Producer Price of Cinnamon



- In March 2025, the market prices of export crops such as cinnamon, pepper, clove, coffee, and tumeric prices have increased while cocoa, cardamom, nutmeg and ginger declined
- Earnings from exports of spices recorded an increase in February 2026 (y-o-y) mainly driven by strong performance in cinnamon exports

# Import Trends of Agricultural Input

Imports	2024	2025	2025 Jan-Feb	2026 Jan-Feb
---------	------	------	--------------	--------------

## Plants and Seeds

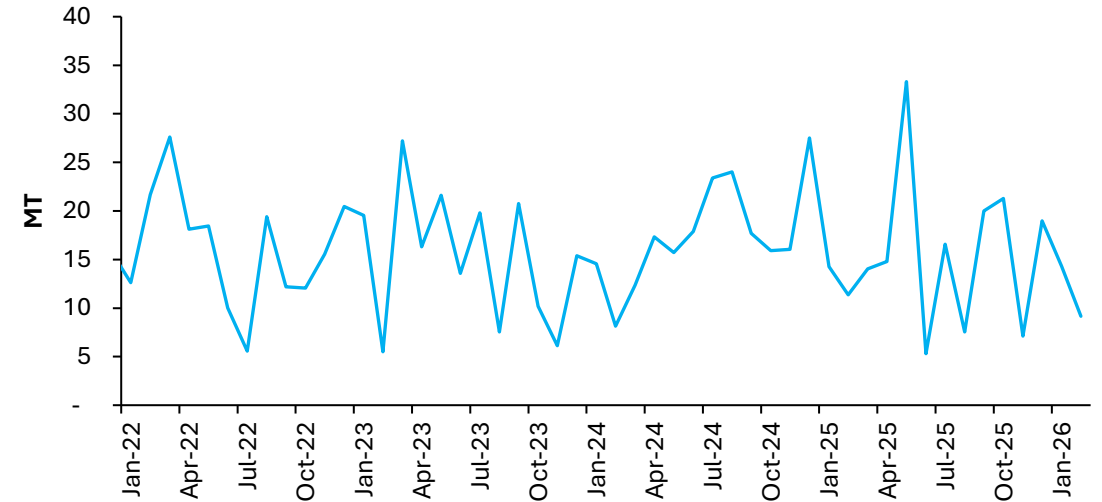
Vegetable seeds (MT)	211	185	26	23
Potato seed (MT)	773	1,002	100	-
Plants & parts (MT)	6,874	5,297	652	1,126
Live trees and other plants (No. '000)	1,248	972	27	82

## Fertilizers (MT '000)

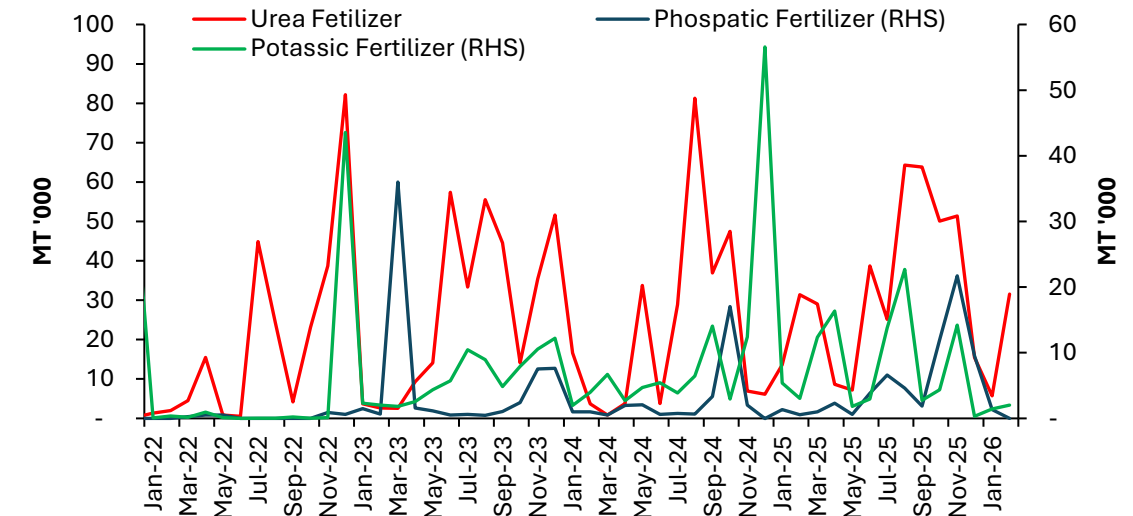
Urea	270	399	45	<b>37</b>
Other nitrogenous fertilizers	68	95	16	<b>6</b>
Phosphatic	31	66	2	<b>1</b>
Potassic	122	100	8	<b>4</b>
Other fertilizers	16	53	4	<b>6</b>

## Import Trends of Selected Agricultural Inputs

### Vegetable Seeds

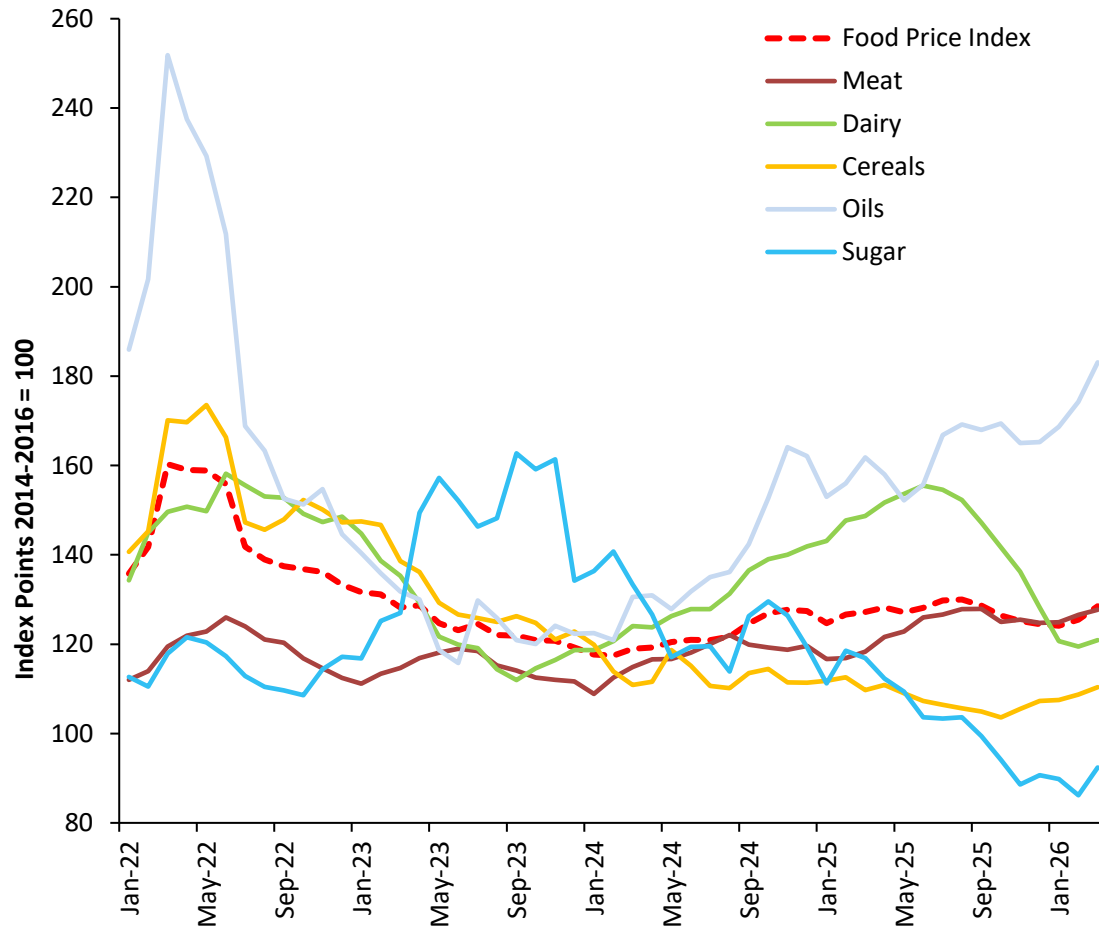


### Fertilizers

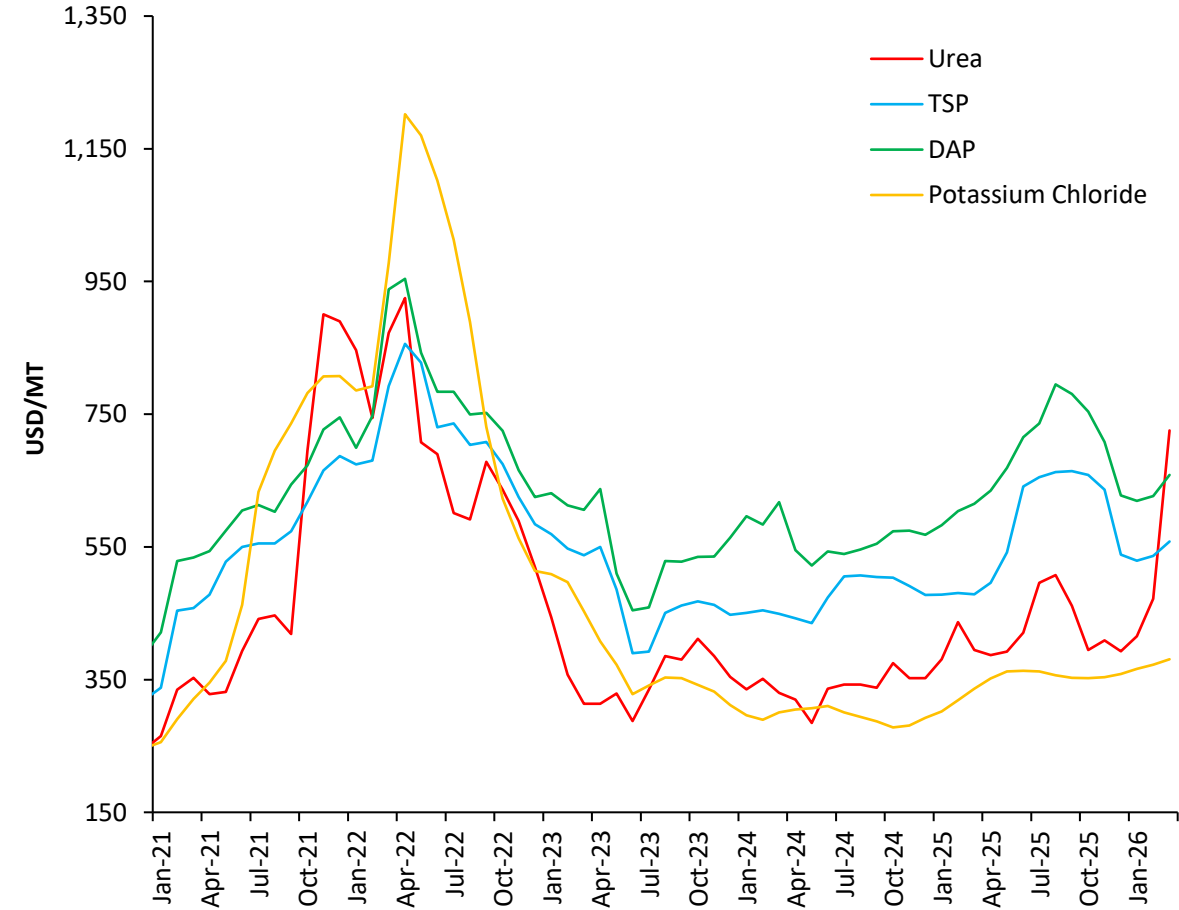


# International Agricultural Commodity Prices

## FAO Food Price Index



## International Fertilizer Prices



The FAO Food Price Index increased slightly in March 2026 compared to the previous month, with price indices increasing across all commodity groups—cereals, meat, dairy, vegetable oils and sugar



**Datasets are accessible via:**

<https://www.cbsl.gov.lk/en/statistics/statistical-tables/real-sector/production-indicators>



**Economic Research Department**  
Central Bank of Sri Lanka

*\*The figures for 2024 and 2025 provided in this data summary are highly provisional.*