

HIGHLIGHTS

Paddy production for 2025 Yala season was 2.31 million metric tons, a 16.8% increase from the previous Yala season



Total fish production decreased by 25.2% (y-o-y) in December 2025 with decreases recorded in both inland and marine fish production



Domestic Tea production decreased by 2.0% (y-o-y) in December 2025, mainly due to heavy rainfall



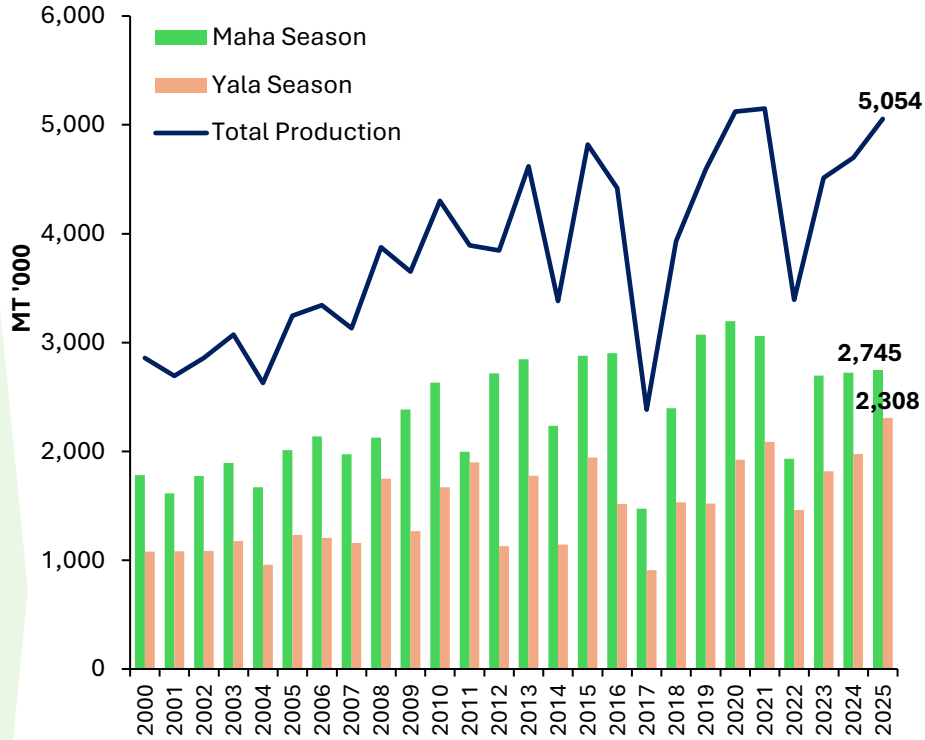
Local rubber production increased in December 2025 by increase of 10.3% due to increased prices and natural rubber exports



Coconut production maintained positive growth trajectory, recording a 49.6% (y-o-y) increase in December 2025. However, production declined since October 2025



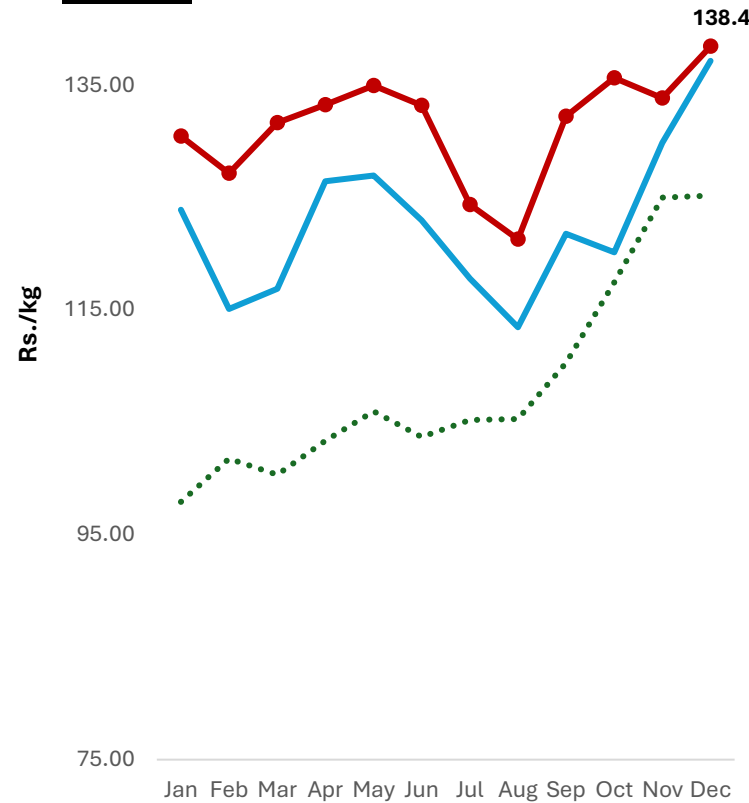
Paddy Production



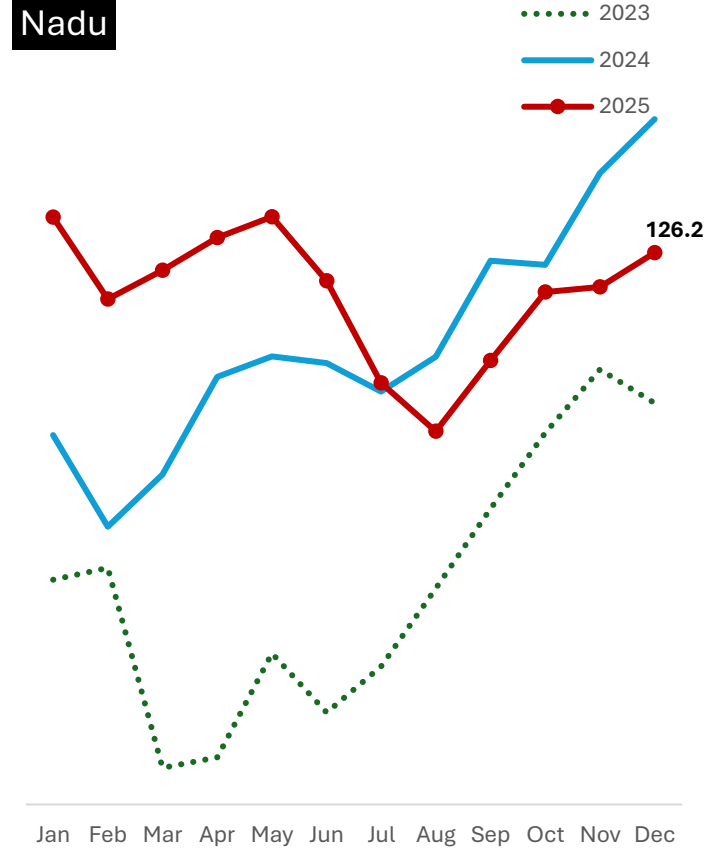
Season	2023 (mn mt)	2024 (mn mt)	2025 (mn mt)	Growth % (y-o-y)
Maha	2.70	2.72	2.74	0.9
Yala	1.82	1.98	2.31	16.8
Annual	4.51	4.70	5.05	7.6

Farmgate/Producer Prices of Paddy

Samba



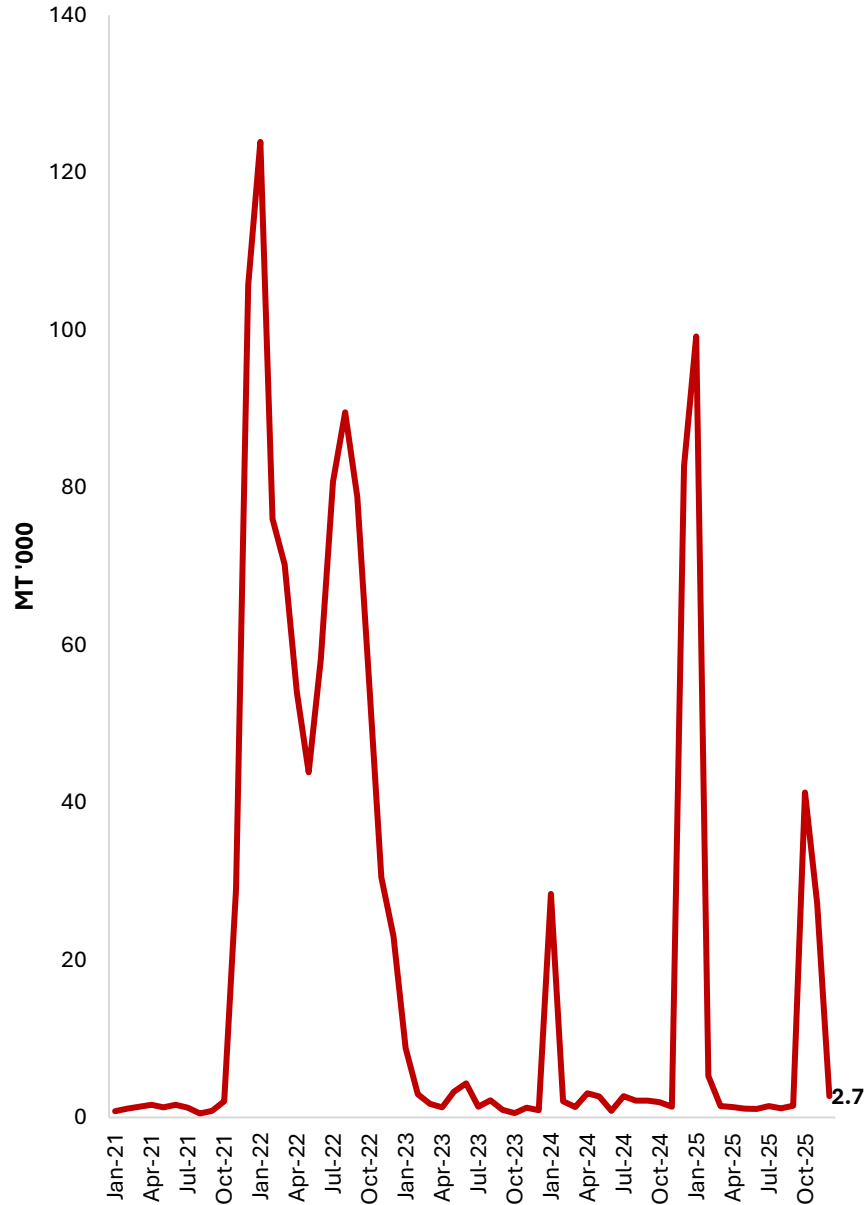
Nadu



- Paddy production for 2025 Yala season was **2.31 million metric tons (16.8% increase from the previous Yala season)**
- Accordingly, annual paddy production for the year 2025 recorded as **5.05 million metric tons (7.6% increase from the previous year)**

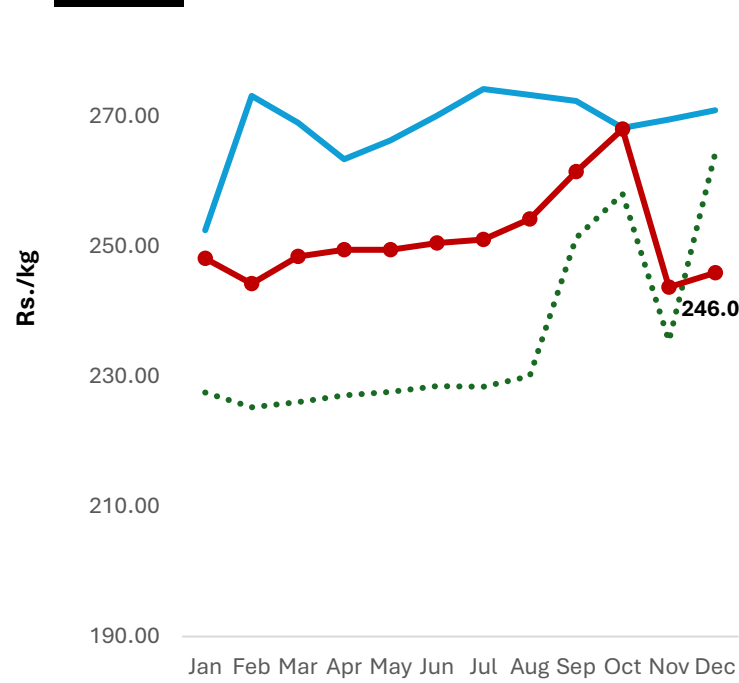
*2025 Yala season production is based on the Department of Agriculture forecast

Rice Imports

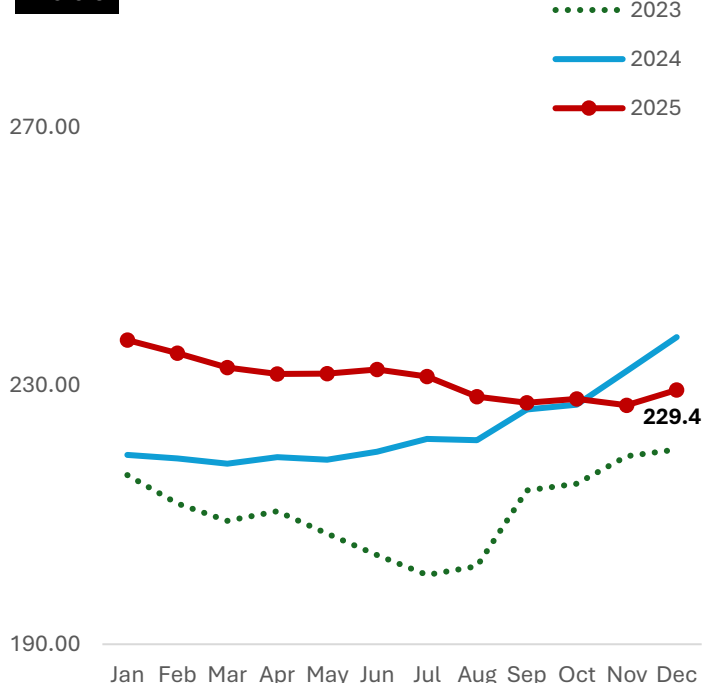


Retail Rice Prices

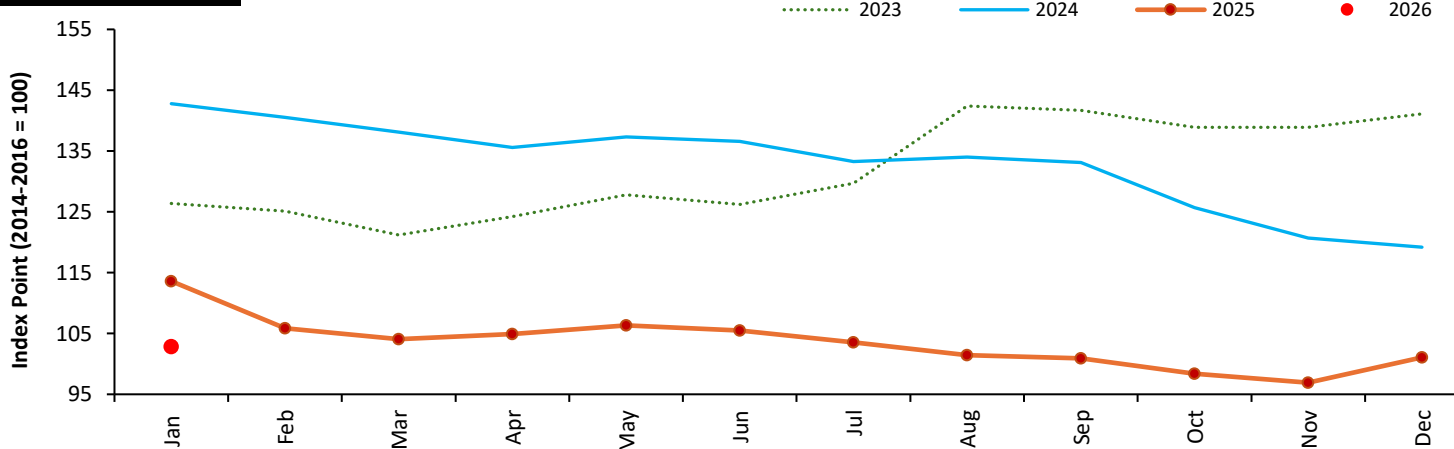
Samba



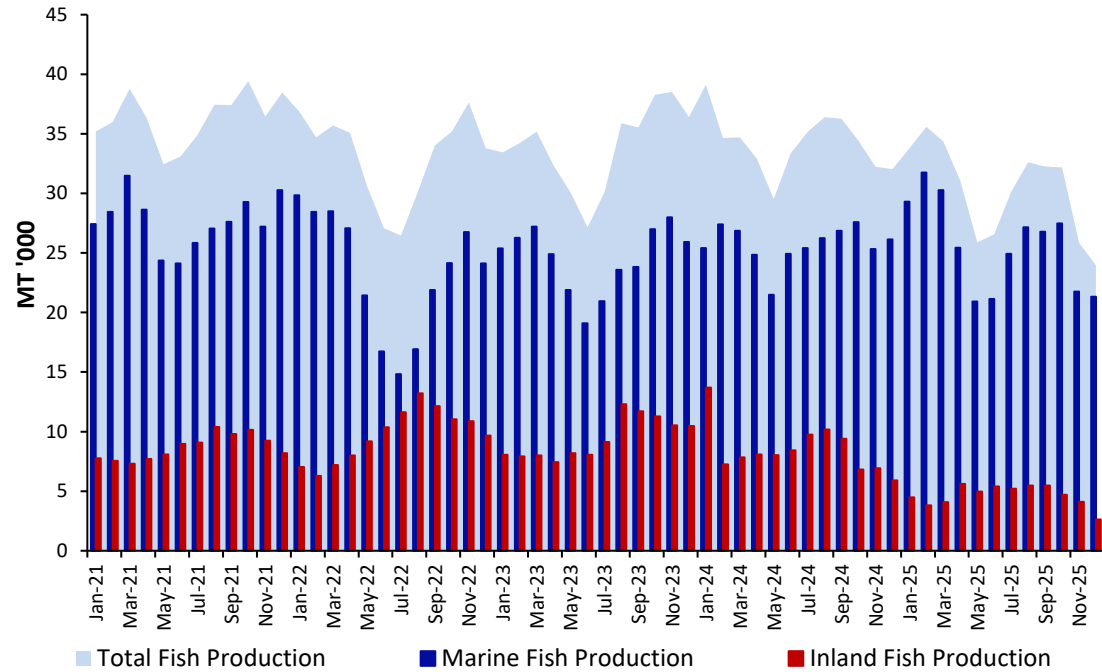
Nadu



FAO All Rice Price Index

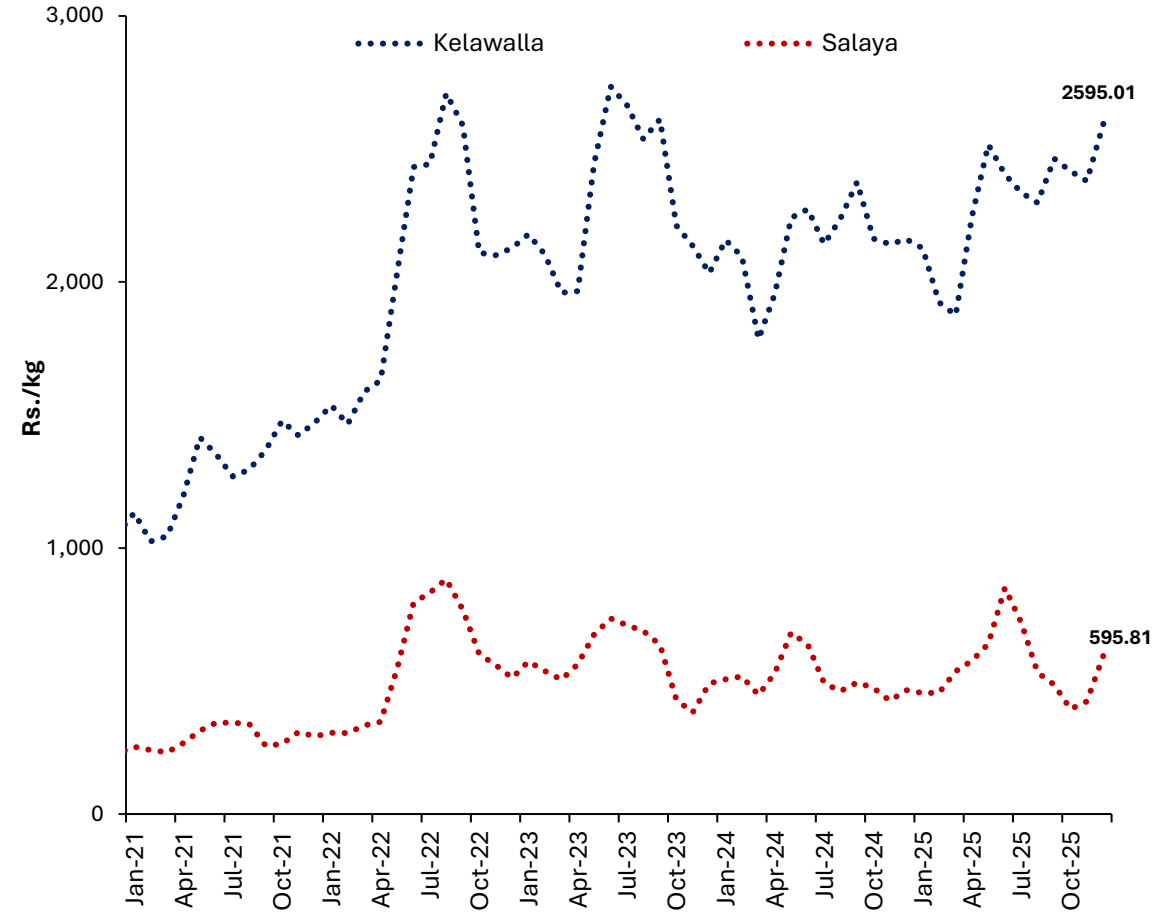


Fish Production



Production (MT '000)	2023	2024	2025
Marine	294	308	308
Inland	113	102	56
Total	407	411	364

Retail Fish Prices



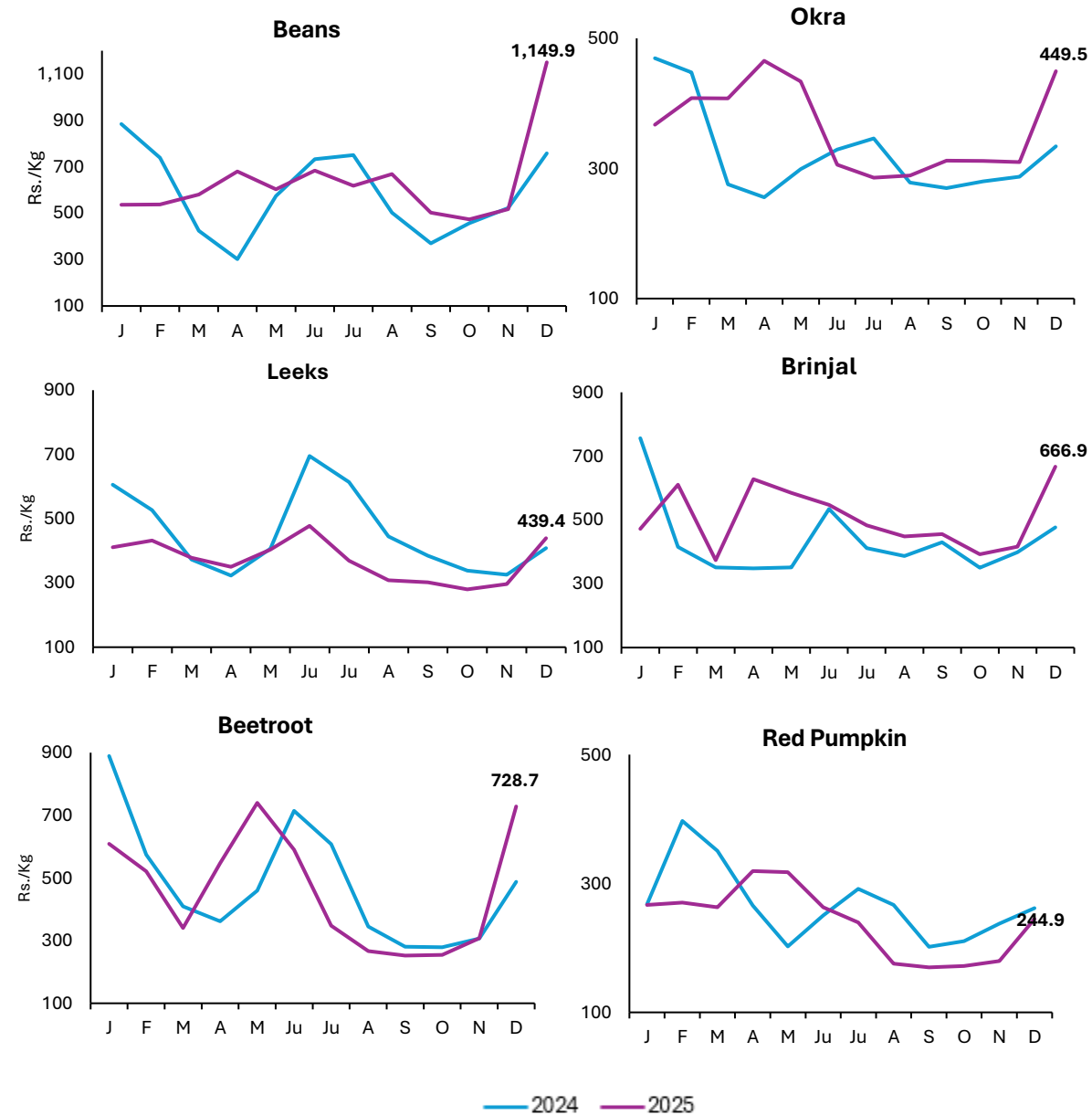
- According to provisional data fish production decreased by **25.2%** (y-o-y) in December 2025 with a notable **55.4%** (y-o-y) decline in inland fish production and a **18.4%** (y-o-y) decline in marine fish production recorded a marginal decline of in December 2025

Vegetable Production (MT)

	22/23 Maha	2023 Yala	23/24 Maha	2024 Yala	24/25 Maha	2025 Yala*	24/25 Yala Y-o-Y Change
Up Country							
Tomatoes	46,244	34,169	39,293	34,945	28,480	44,554	↑
Cabbage	52,310	47,773	58,552	48,242	41,811	59,249	↑
Carrot	40,084	25,267	48,836	24,374	25,604	38,943	↑
Beetroot	17,178	21,444	17,332	20,034	15,825	19,731	↓
Raddish	26,955	27,557	40,159	27,567	31,271	22,763	↓
Beans	41,139	25,287	36,345	26,128	20,468	36,159	↑
Low Country							
Luffa	24,852	18,417	22,225	18,521	20,465	14,022	↓
Okra	38,984	31,351	37,620	35,003	40,296	30,837	↓
Brinjal	80,637	54,450	69,584	54,660	64,545	57,022	↑
Cucumber	21,013	26,603	17,937	27,161	18,982	17,278	↓
Red pumpkin	59,163	41,779	46,890	42,565	48,389	58,782	↑
Ash plantain	35,369	22,833	33,783	24,477	29,506	5,905	↓
Long bean	35,395	27,456	35,539	28,855	34,926	32,004	↑

*2025 Yala season production is based on the Department of Agriculture final crop forecast

Retail Vegetable Prices



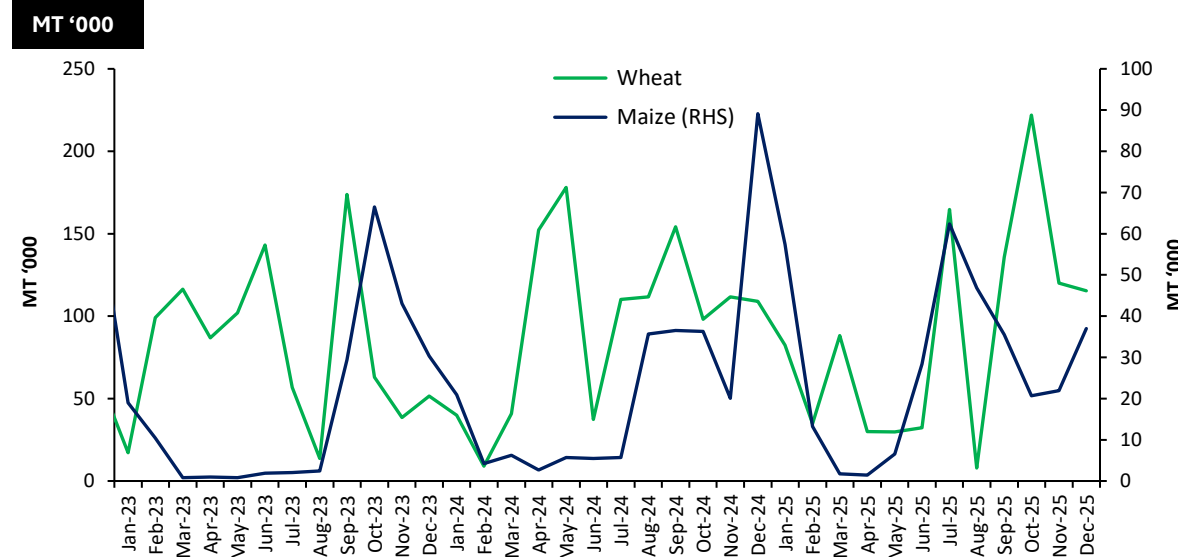
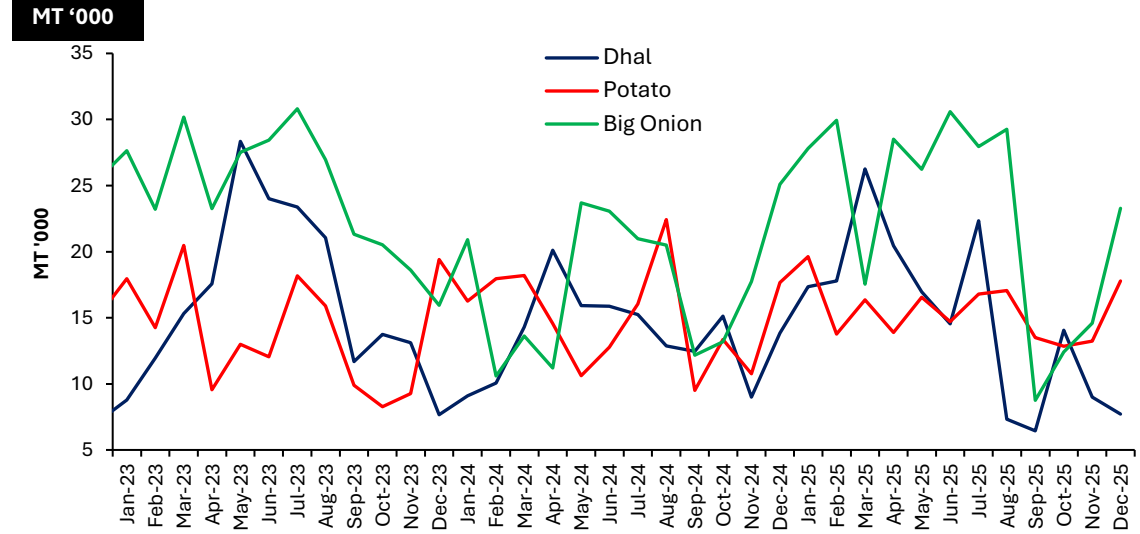
Other Field Crops

	22/23 Maha	2023 Yala	23/24 Maha	2024 Yala	24/25 Maha	2025 Yala*	24/25 Yala Y-o-Y Change
Potato	19,723	21,026	21,291	20,916	15,010	28,344	↑
Red Onion	26,673	22,678	24,762	19,749	24,440	29,507	↑
Big Onion	329	4,755	257	8,572	395	53,816	↑
Green Chillie	42,270	25,128	40,438	26,200	38,285	60,348	↑
Cowpea	7,022	5,779	5,955	5,458	6,307	5,337	↓
Black gram	8,346	1,437	8,518	1,828	7,224	1,543	↓
Maize	198,601	22,647	196,871	26,626	245,351	34,736	↑
Ground Nut	19,014	10,666	17,336	11,626	18,751	12,194	↑
Gingelly	2,701	8,651	2,210	8,293	1,675	15,831	↑
Green gram	6,940	5,514	6,156	8,909	6,754	14,938	↑

*2025 Yala season production is based on the Department of Agriculture final crop forecast

Imports (MT)	2023	2024	2025
Dhal	196,601	163,881	180,225
Potato	168,184	180,121	186,145
Big Onion	294,386	212,720	276,862

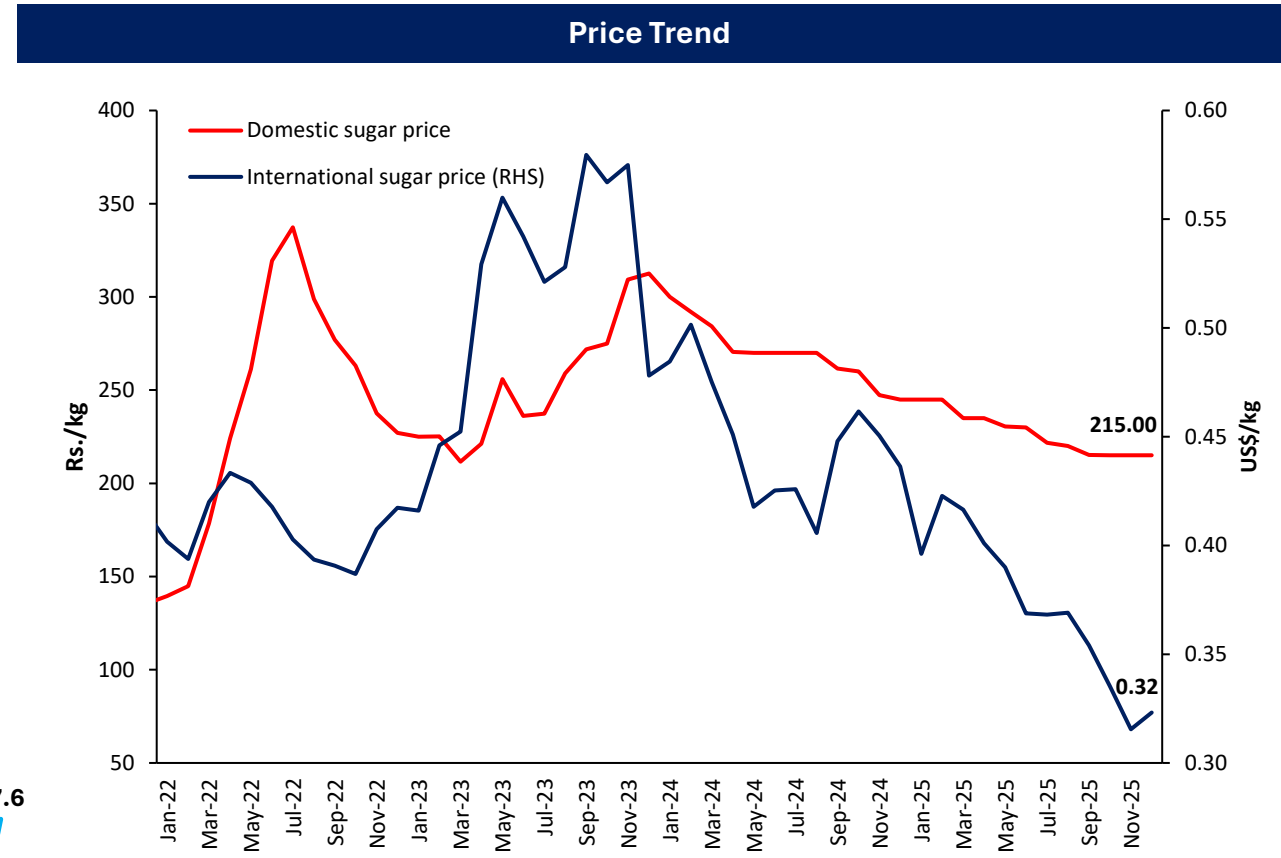
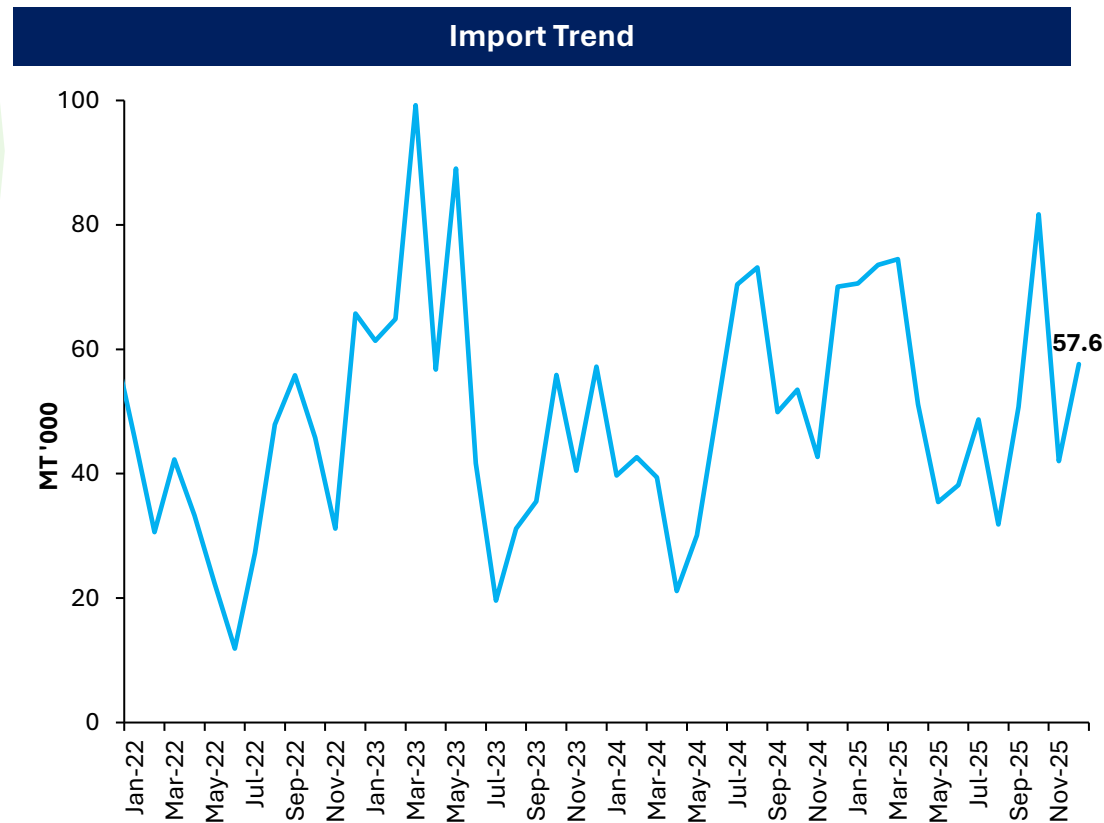
Import Trend of Selected Food Items



Sources: Department of Census and Statistics, Sri Lanka Customs

Sugar

	2024	2025
Sugar Production (MT)	80,102	68,951
Sugar Imports (MT)	582,906	655,989



International sugar prices experienced a moderate increase in December 2025 primarily driven by a sharp drop in sugar production in Brazil's key southern growing regions.

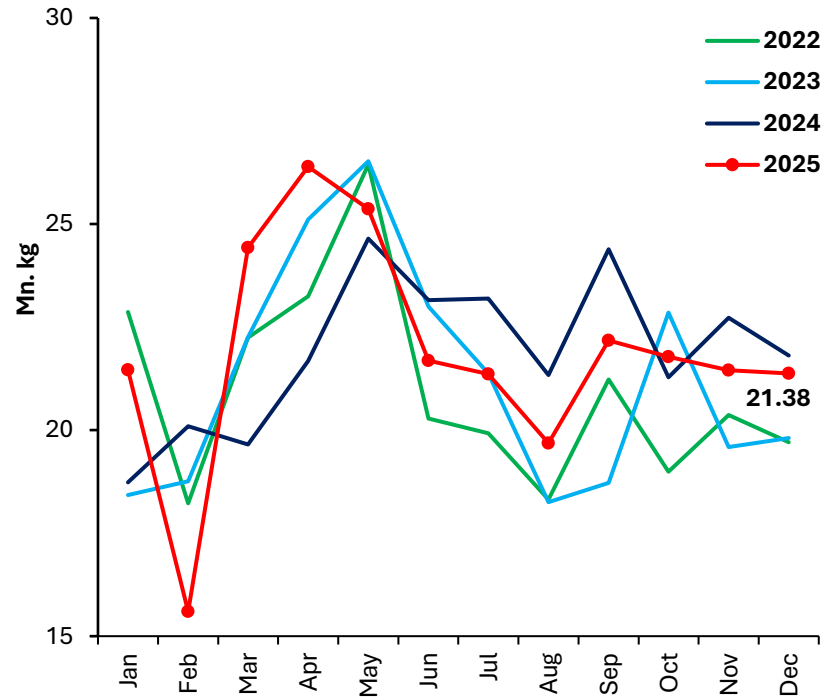
Livestock

	2024 November	2025 October	2025 November	
Production	Egg (mn)	294	297	295
	Chicken (000 MT)	21	25	25
Price	Egg-White (Rs./egg)	39.6	30.5	30.1
	Egg - Red (Rs./egg)	41.3	32.1	31.7
	Chicken (Rs./kg)	1035.6	1097.3	1090.4
Cost of Production	Egg (Rs./egg)	31.6-37.0	29.4-32.2	29.4-32.4
	Chicken (Rs./kg)	757.4	792.9	775.0

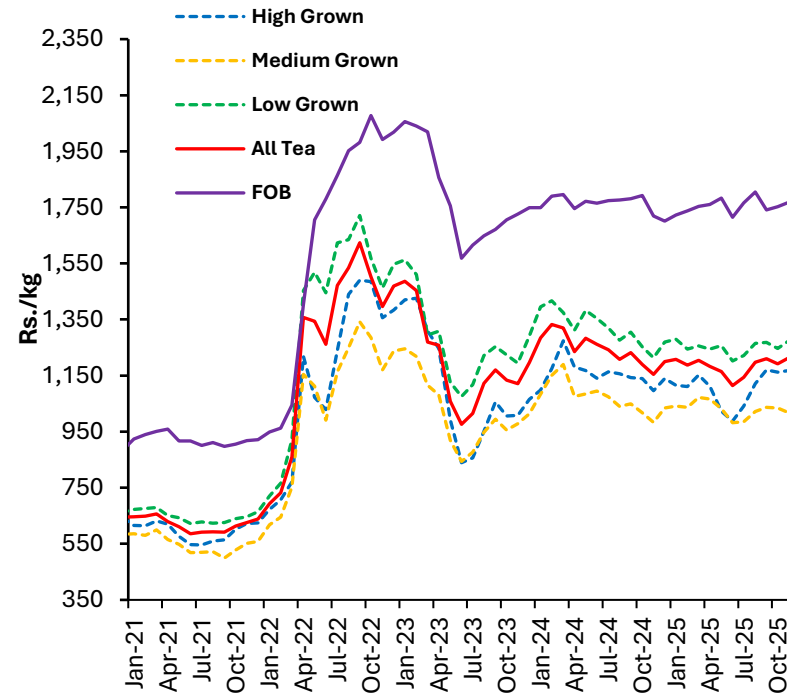
Feed Ingredients (Rs./kg)	2024 November	2025 October	2025 November
Maize	193.3	171.3	171
Soya bean meal	222.3	205.0	227.2
Fish meal	310.0-503.8	322.5-606.7	380.0-610.0
Rice polish	132.1	127.5	127

Tea

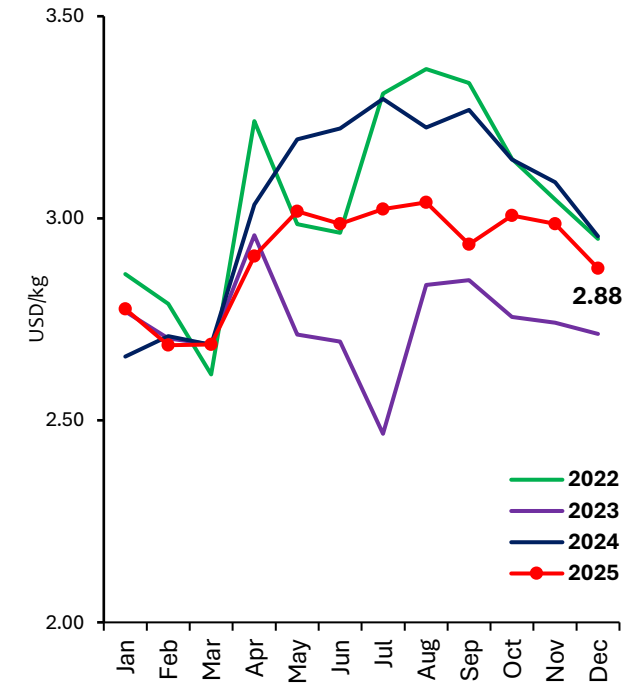
Tea Production



Tea Auction Prices & FOB Prices



International Tea Prices



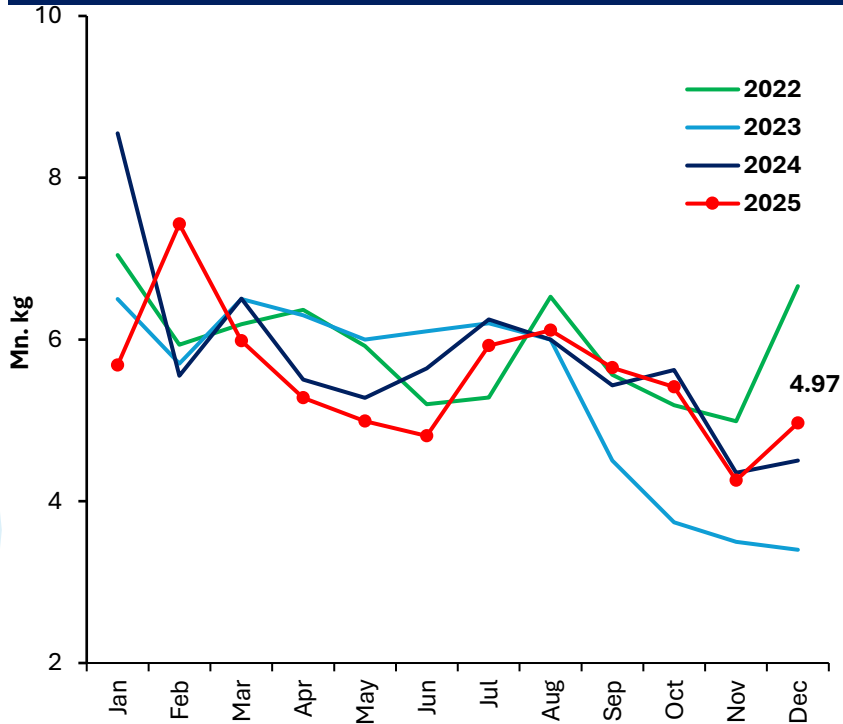
*Average Auction Price of Colombo, Kolkata & Mombasa

Tea Production (mn kg)	2024	2025	Growth %
High grown	55.7	56.2	0.93
Medium grown	47.4	47.7	0.70
Low grown	159.6	158.8	(0.49)
Total	262.7	262.8	0.02

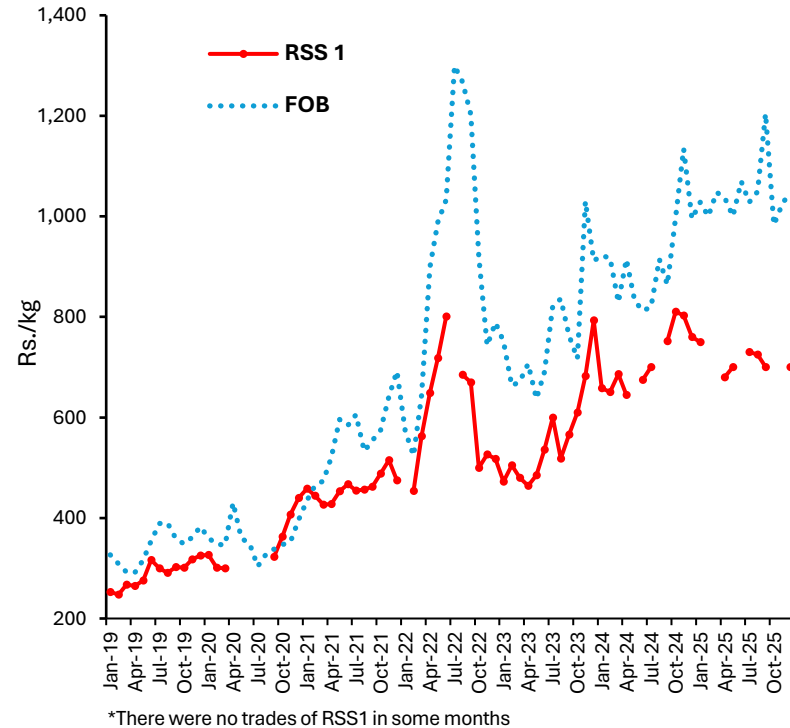
- Domestic tea production decreased by **2.0%** (y-o-y) during the month of December 2025, mainly due to heavy rainfall
- Global tea prices declined in December 2025 compared to the previous month, with all three major auctions; Kolkata, Colombo, and Mombasa recording decreases.

Rubber

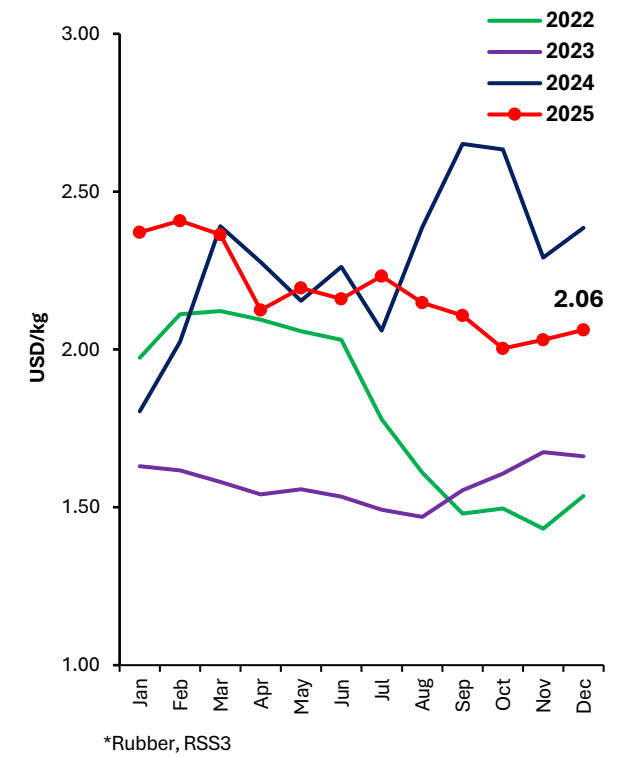
Rubber Production



Rubber Auction Prices & FOB Prices



International Rubber Prices

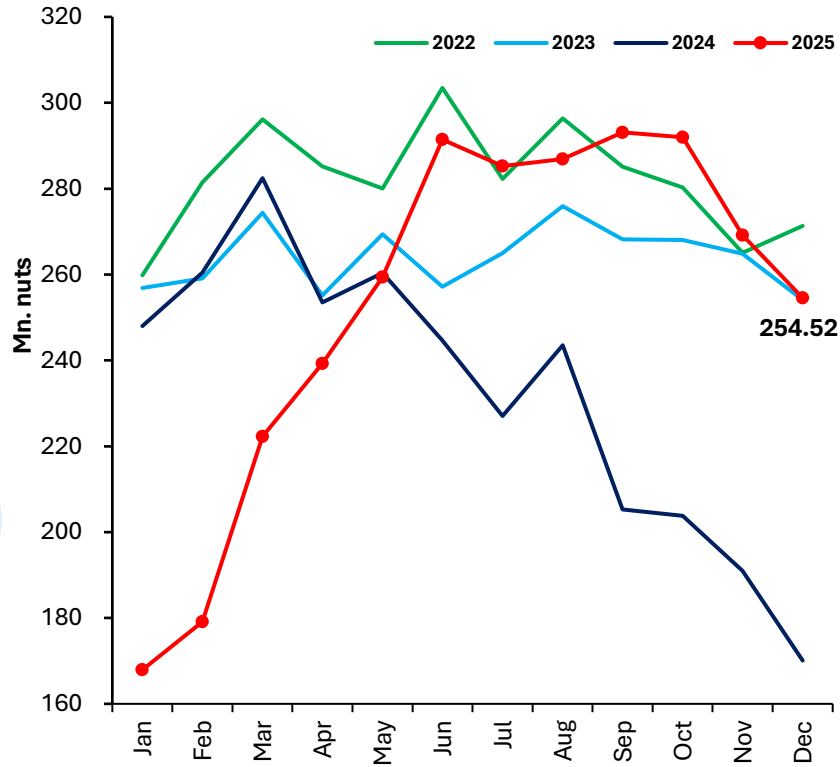


Rubber Production (mn kg)	2024	2025	Growth %
Sheet Rubber	33.5	33.0	(1.4)
Crepe Rubber	10.1	11.1	10.1
Other	25.6	22.4	(12.7)
Total	69.2	66.5	(3.9)

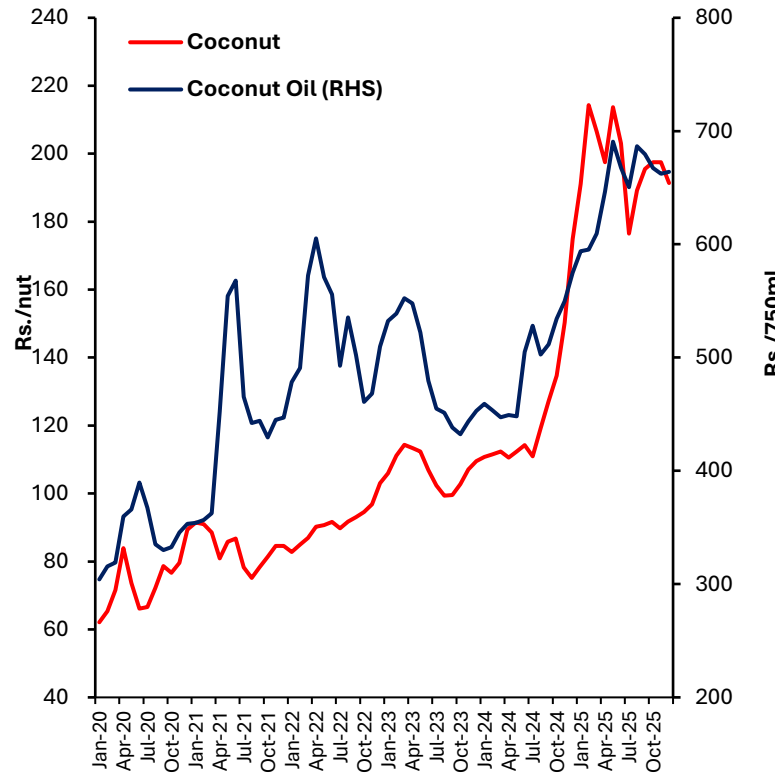
- Domestic rubber production recorded a year-on-year increase of **10.3%** in December 2025 due to increased prices and natural rubber exports
- Global natural rubber prices marginally increased in December 2025 driven by weather-related supply tightness

Coconut

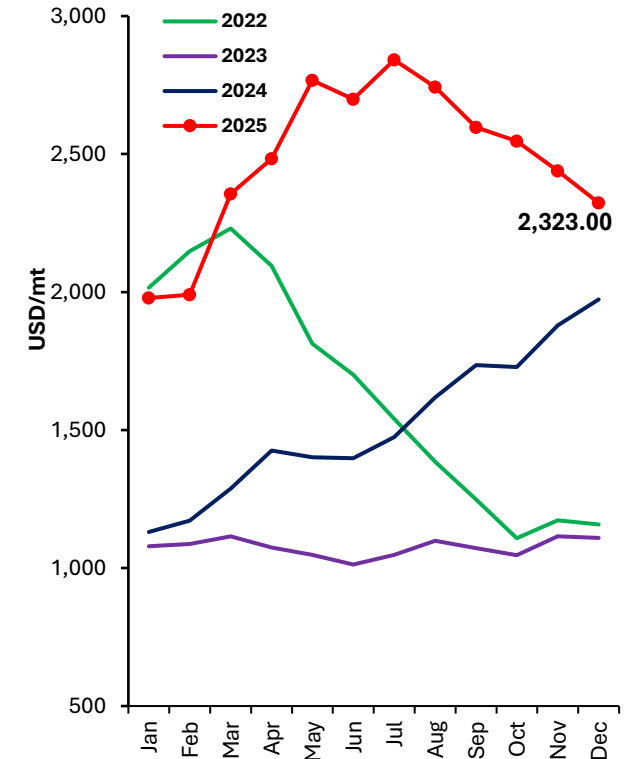
Coconut Production



Retail Price of Coconut and Coconut Oil



International Coconut Oil Prices



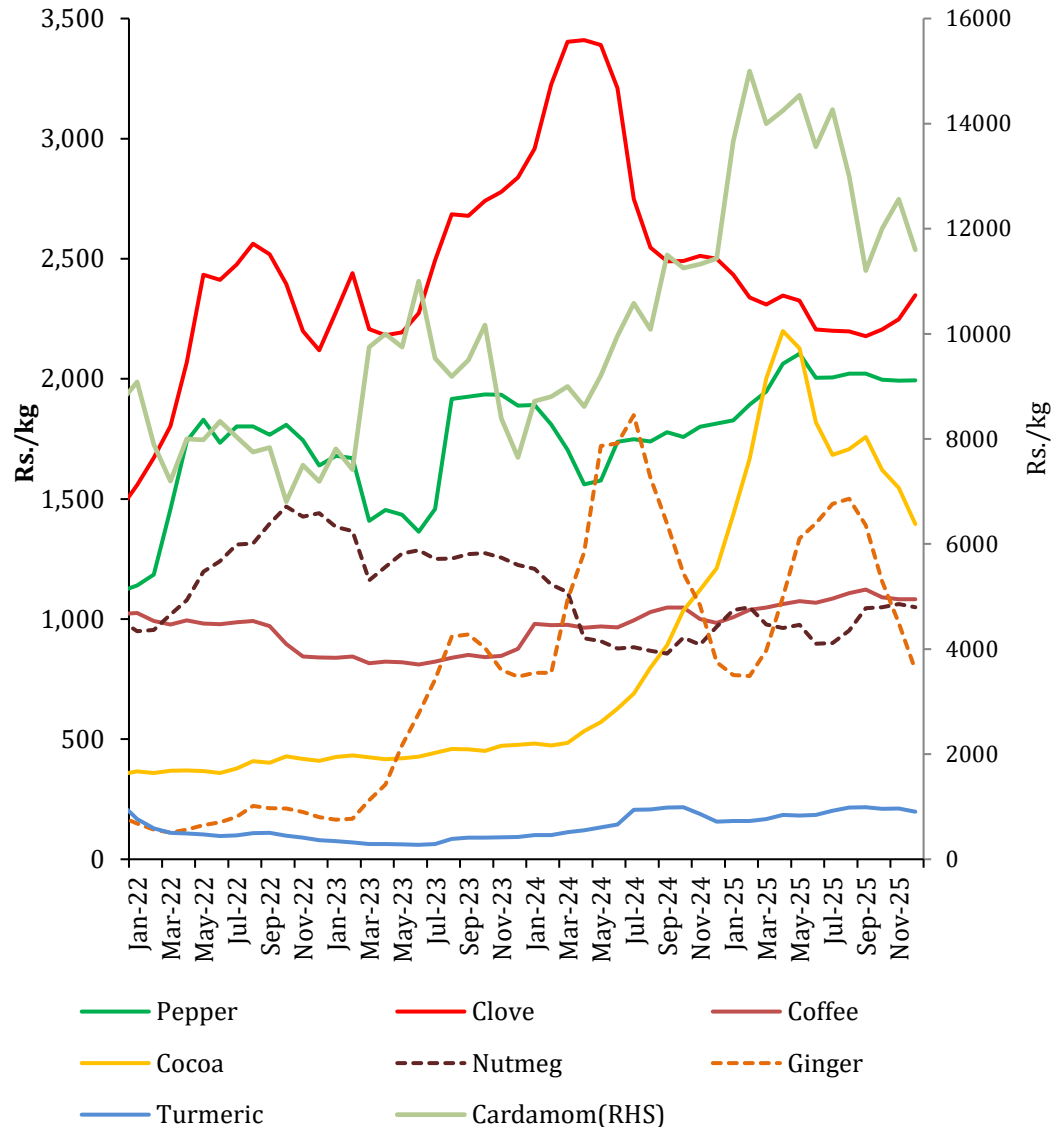
Coconut Production	2024	2025	Growth %
Coconut (mn nuts)	2,790	3,040	9.0
Desiccated Nut (MT)	33,177	34,381	3.6
Coconut Oil (MT)	30,842	33,696	9.3

Coconut production recorded a **49.6% y-o-y increase in December 2025** also attributed to base effect following the sharp production decline in 2024. However, production declined since October 2025.

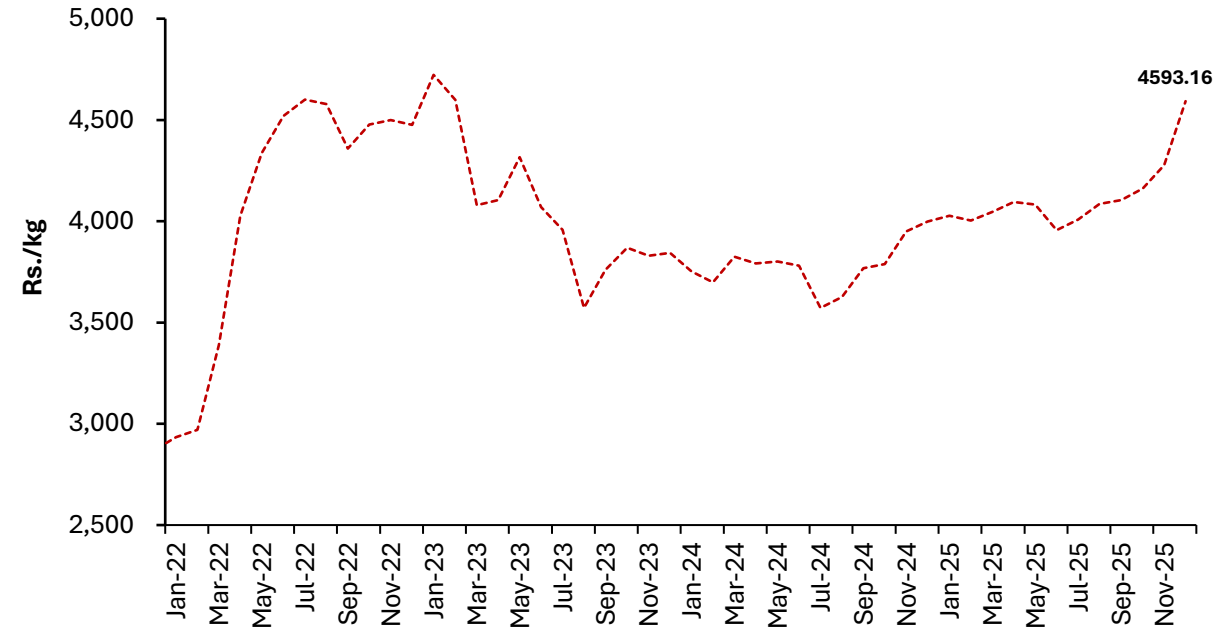
International coconut oil prices continued to decline as improved supply conditions corrected the sharp price surge earlier in the year

Other Export Agriculture

Farmgate/Producer Prices of Selected Export Agriculture Crops



Farmgate/Producer Price of Cinnamon



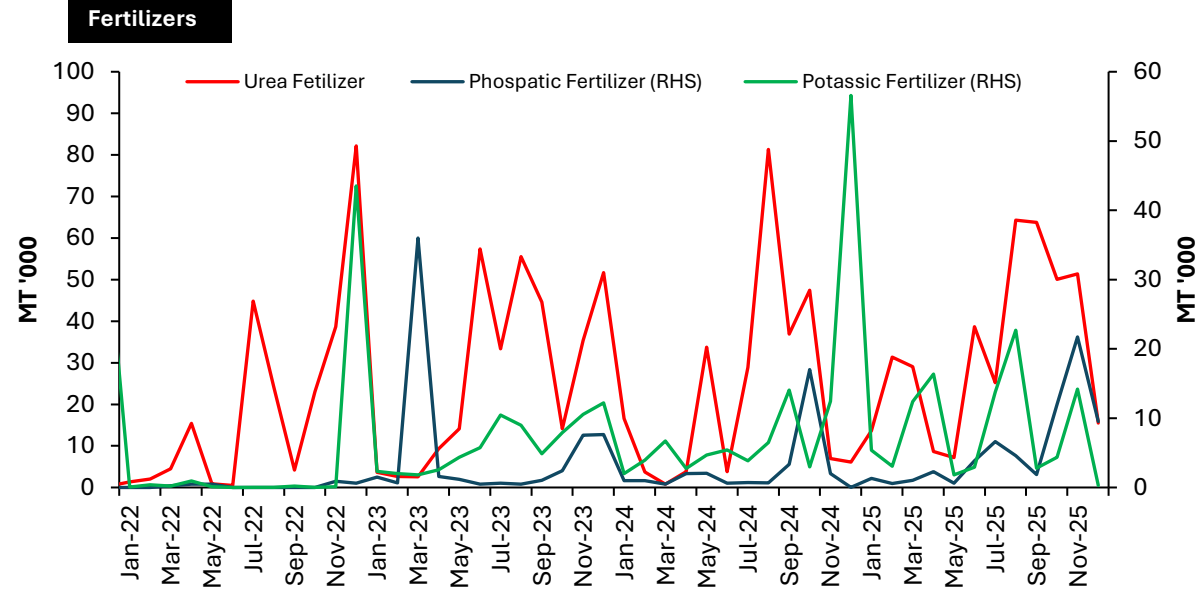
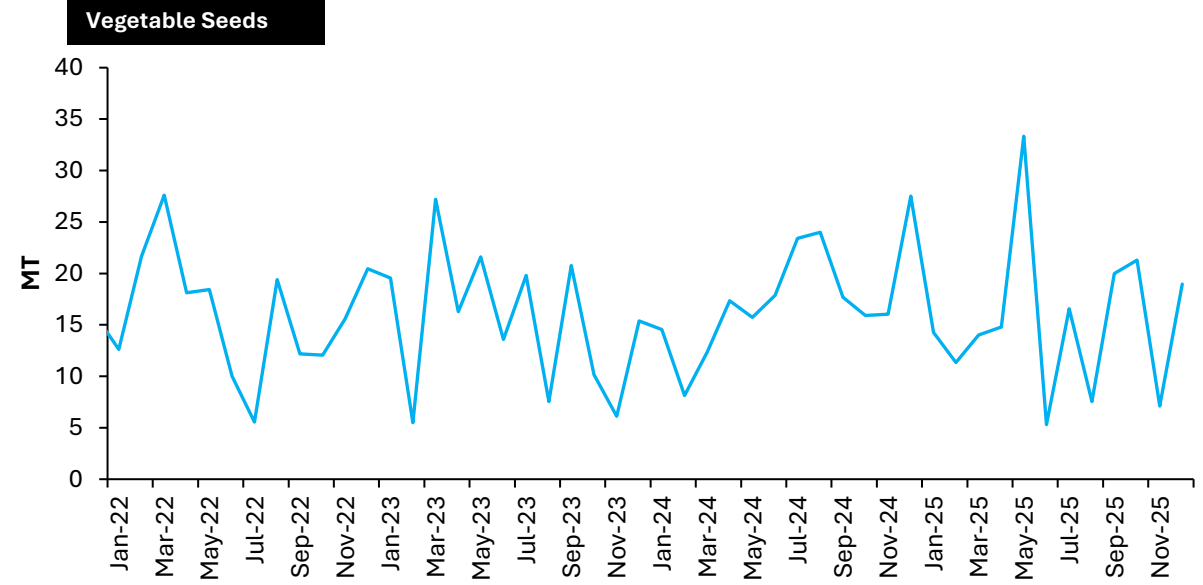
In December 2025, the market prices of many export crops such as coffee, cocoa, cardamom, nutmeg, turmeric and ginger declined while pepper, clove and cinnamon prices registered an increase

Earnings from exports of spices decreased during December 2025 (y-o-y), mainly due the significant drop in pepper exports

Agricultural Input Import Trends

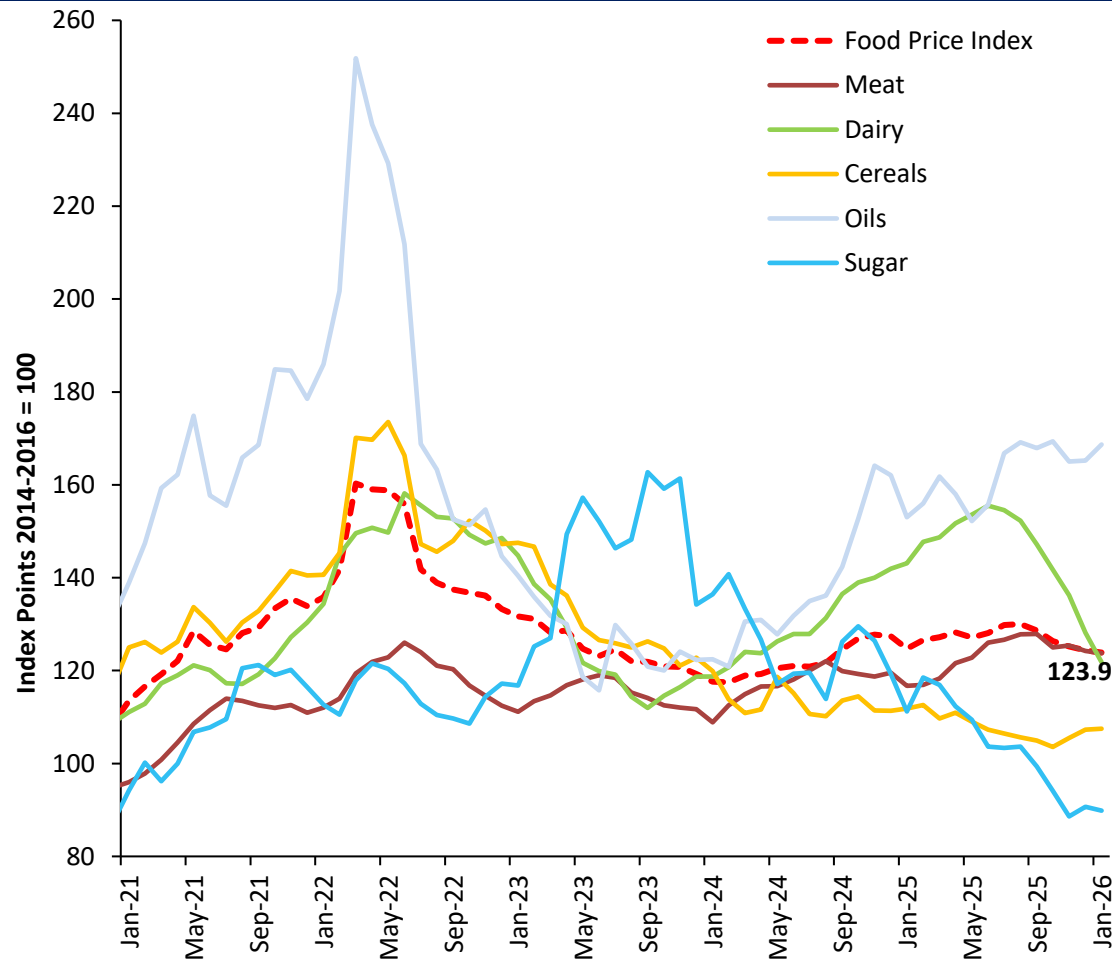
Imports	2023	2024	2025
Plants and Seeds			
Vegetable seeds (MT)	184	211	185
Potato seed (MT)	797	773	1,002
Plants & parts (MT)	4,236	6,874	5,297
Live trees and other plants (No. '000)	1,039	1,248	972
Fertilizers (MT '000)			
Urea	324	270	399
Other nitrogenous fertilizers	65	68	95
Phosphatic	61	31	66
Potassic	74	122	100
Other fertilizers	19	16	53

Import Trends of Selected Agricultural Inputs

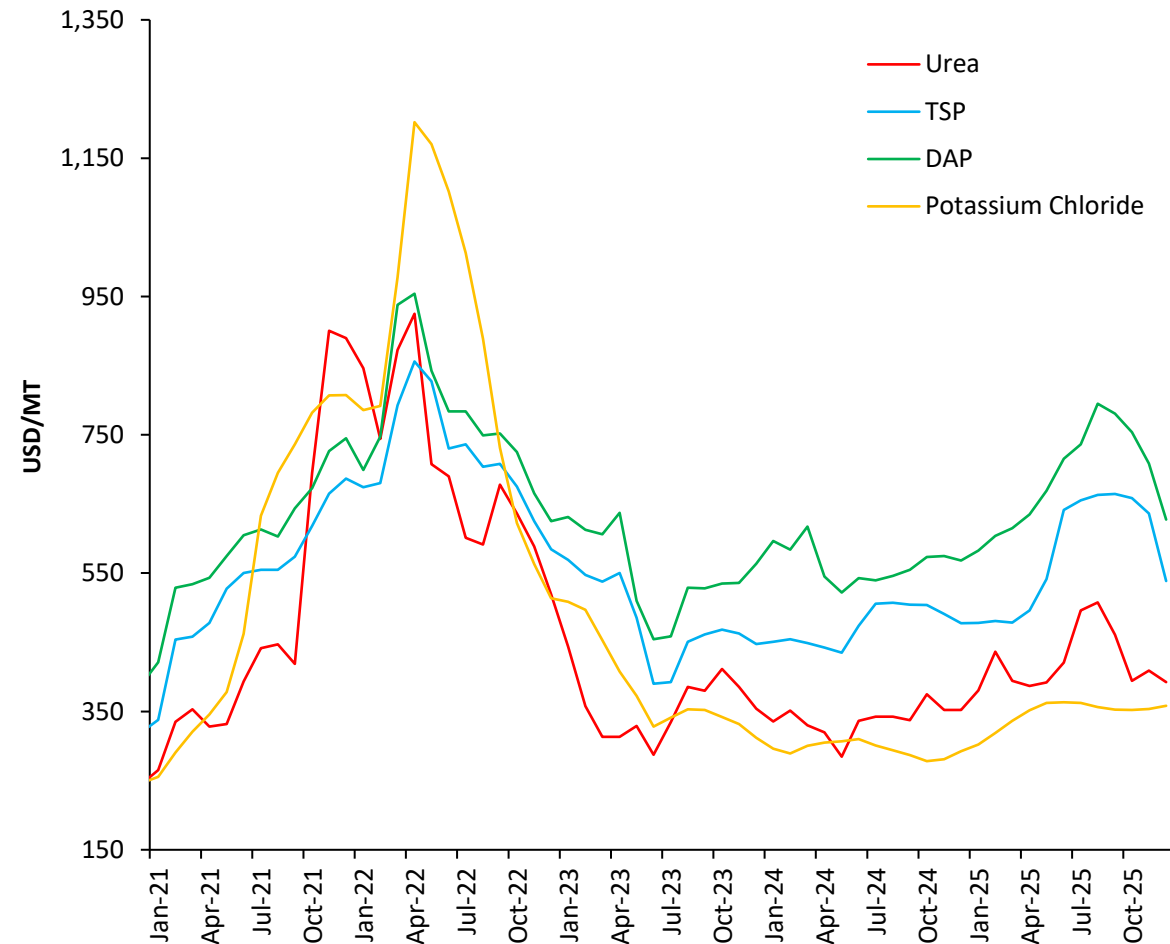


International Agricultural Commodity Prices

FAO Food Price Index



International Fertilizer Prices



In January 2026, the FAO Food Price Index fell compared to the previous month, as the declines in dairy products, meat and sugar more than offset increases in cereals and vegetable oil, marking the fifth consecutive monthly decline of the index



Datasets are accessible via:

<https://www.cbsl.gov.lk/en/statistics/statistical-tables/real-sector/production-indicators>

**The figures for 2024 and 2025 provided in this data summary are highly provisional.*



**Economic Research Department
Central Bank of Sri Lanka**