

HIGHLIGHTS

Paddy production for 2025/26 Maha season, based on the sown extent as of end December 2025, is forecasted at 2.6 million metric tons, a 5.3% decline from the previous Maha season



Total fish production decreased by 25.2% (y-o-y) in December 2025 with decreases recorded in both inland and marine fish production



Domestic Tea production decreased by 3.6% (y-o-y) in January 2026 while tea auction prices declined compared to previous month



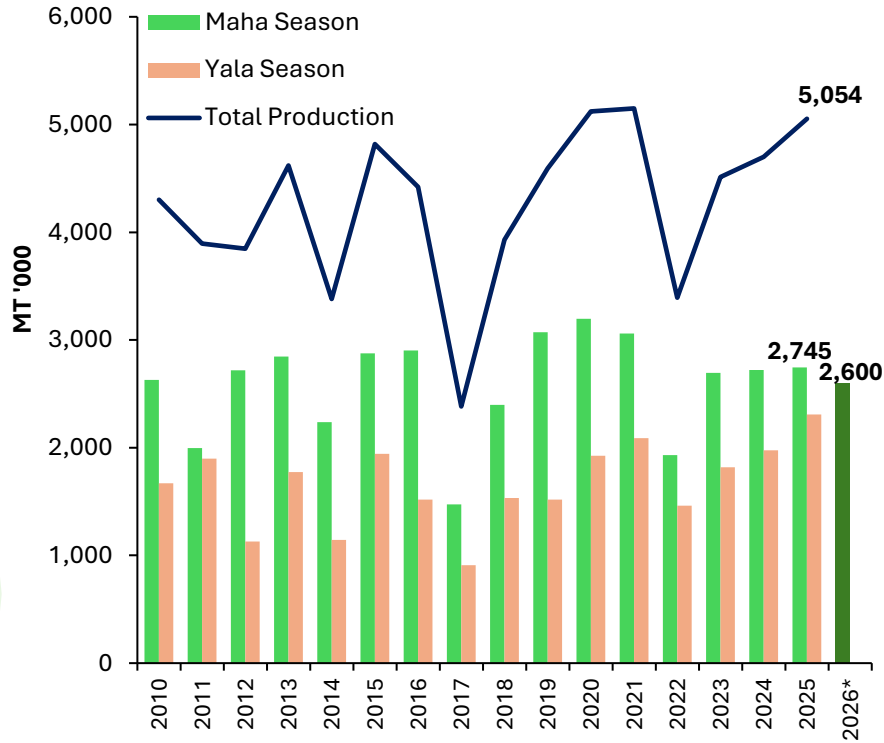
Local rubber production increased in January 2026 by 4.4%, driven by reduced rainy days that supported tapping operations



Coconut production maintained positive growth trajectory, recording a 49.6% (y-o-y) increase in December 2025. However, production declined since October 2025



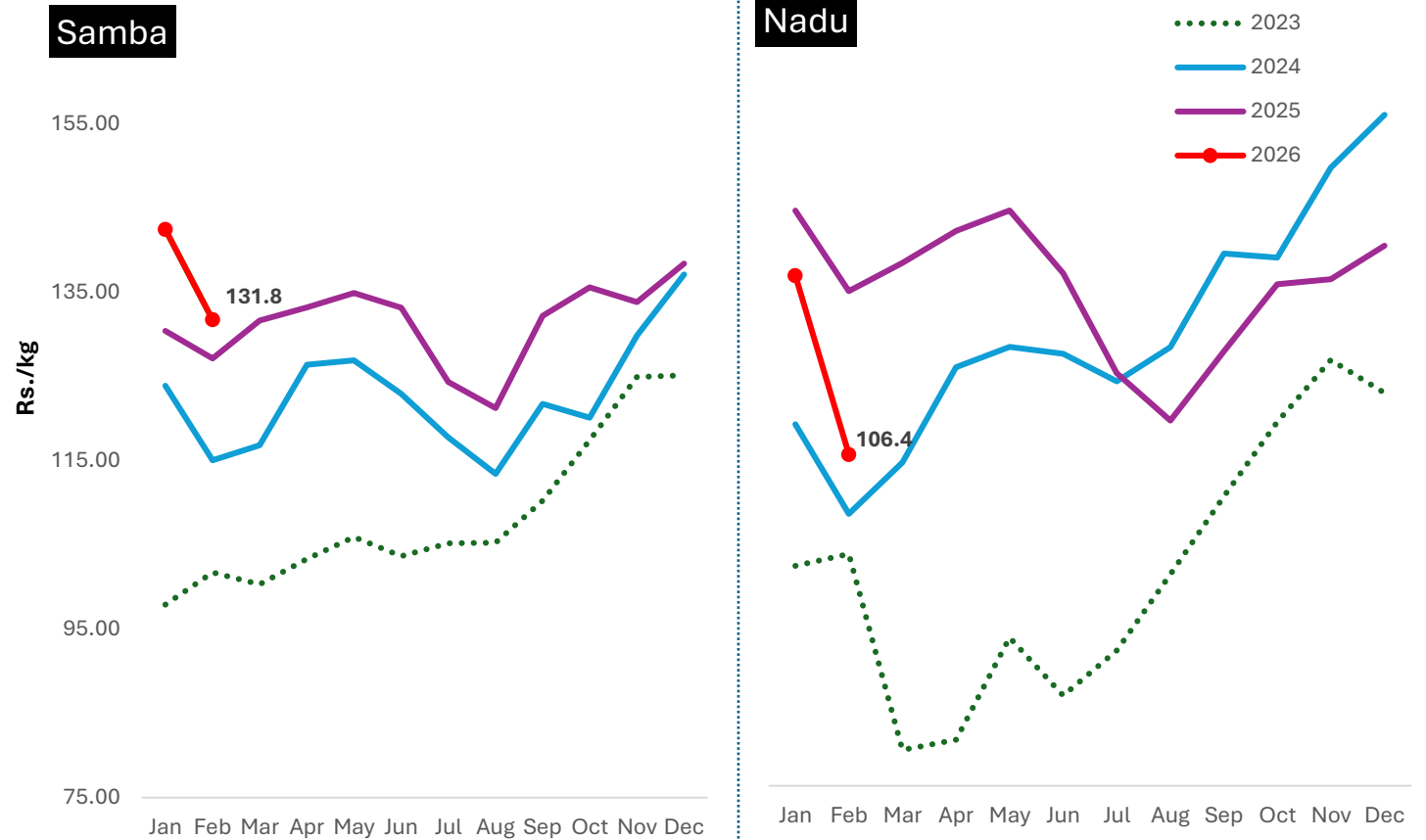
Paddy Production



*2025/6 Maha season production is based on the Department of Agriculture forecast

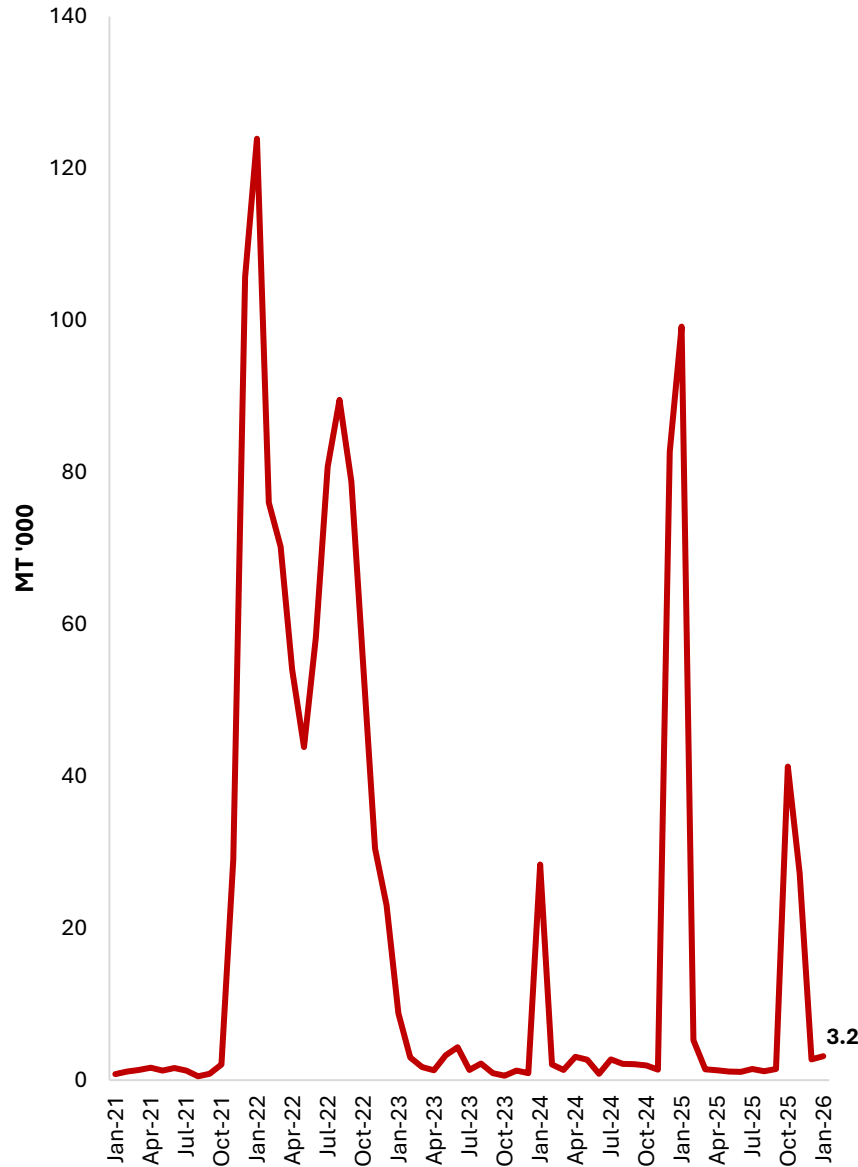
Season	2023 (mn mt)	2024 (mn mt)	2025 (mn mt)	Growth % (y-o-y)
Maha	2.70	2.72	2.74	0.9
Yala	1.82	1.98	2.31	16.8
Annual	4.51	4.70	5.05	7.6

Farmgate/Producer Prices of Paddy



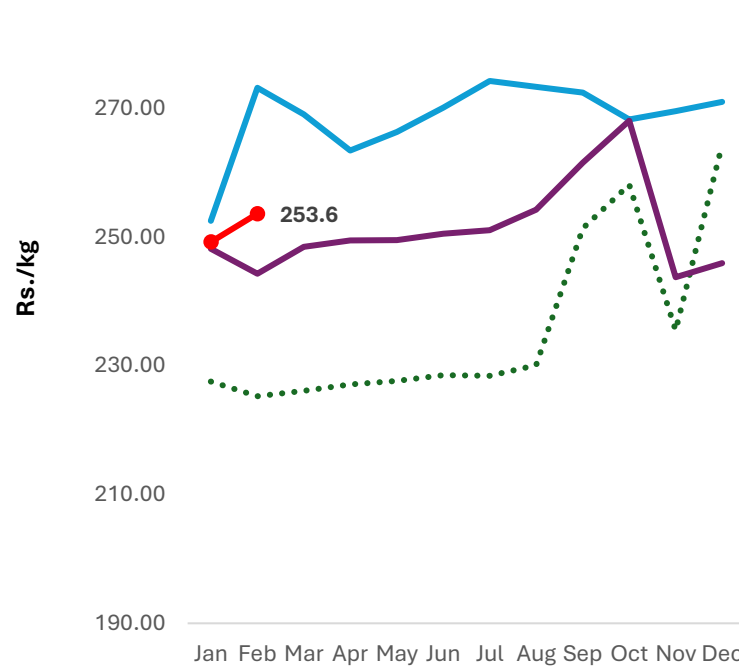
- Paddy production for 2025/26 Maha season is estimated as **2.6 million metric tons (5.3% decrease from the previous Maha season)** based on the sown extent as of end December 2025. This decline also includes crop damage caused by Cyclone Ditwah
- Annual paddy production for the year 2025 recorded as **5.05 million metric tons (7.6% increase from the previous year)**

Rice Imports

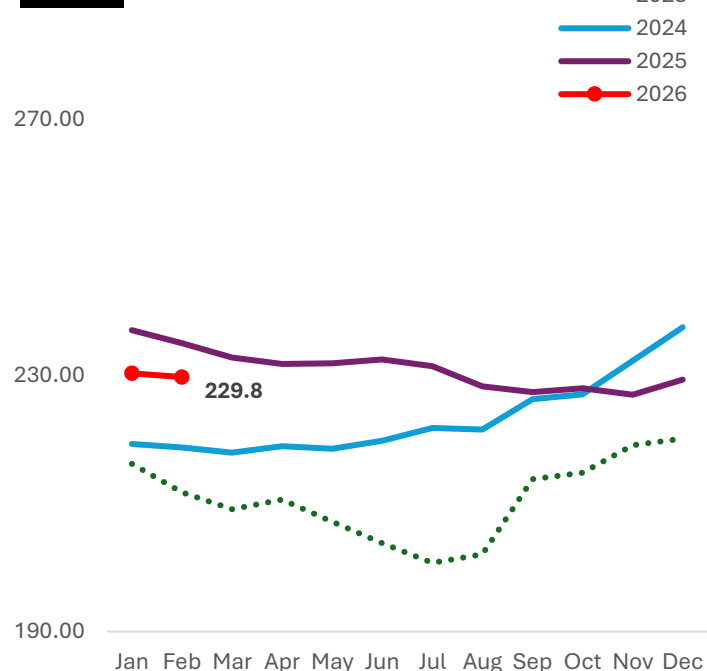


Retail Rice Prices

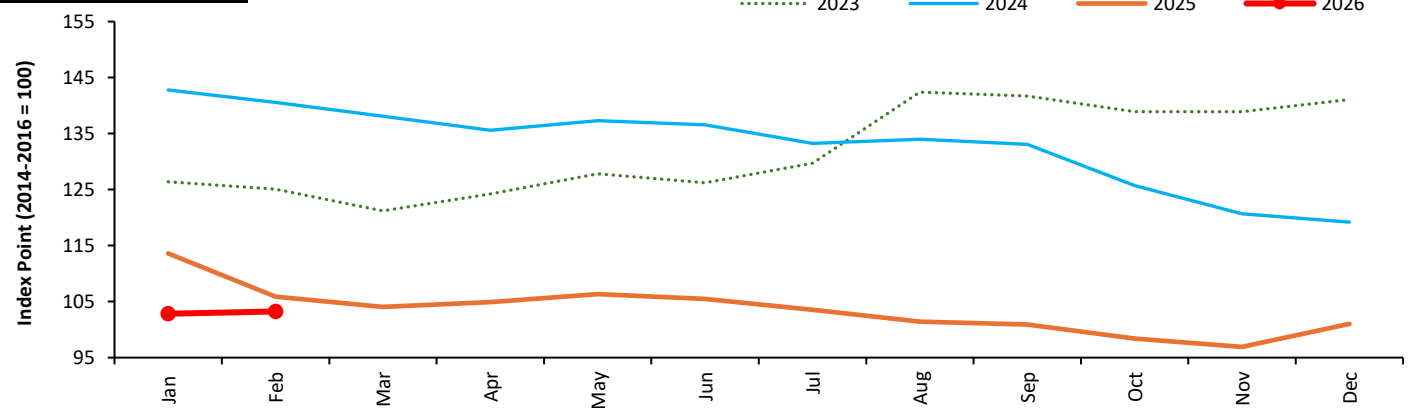
Samba



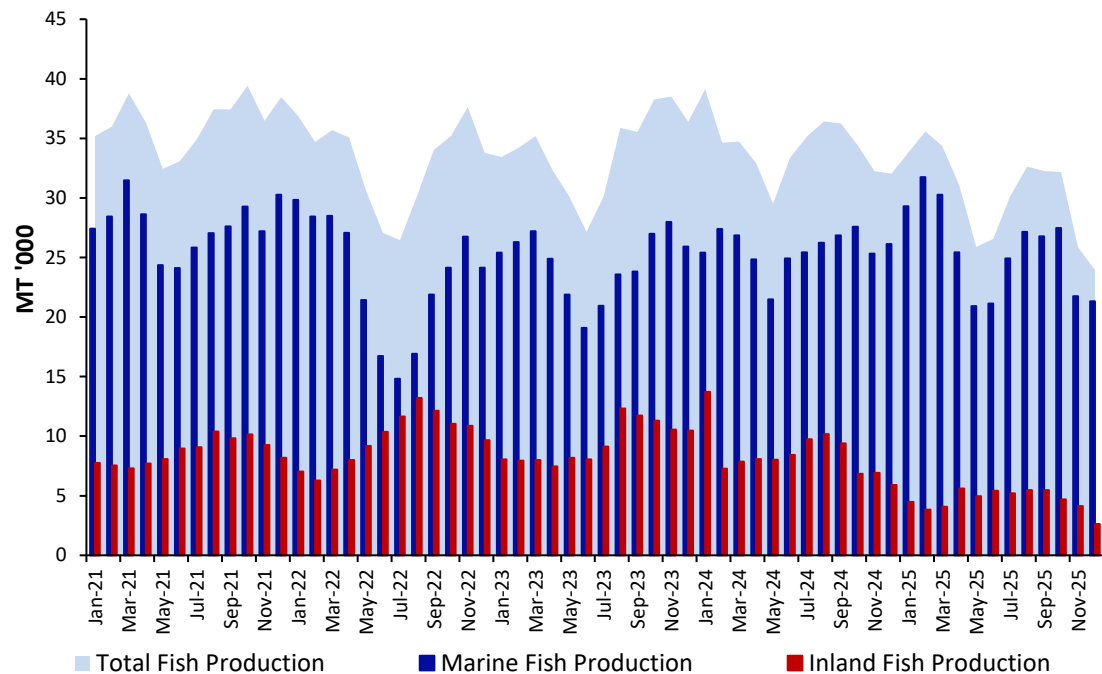
Nadu



FAO All Rice Price Index

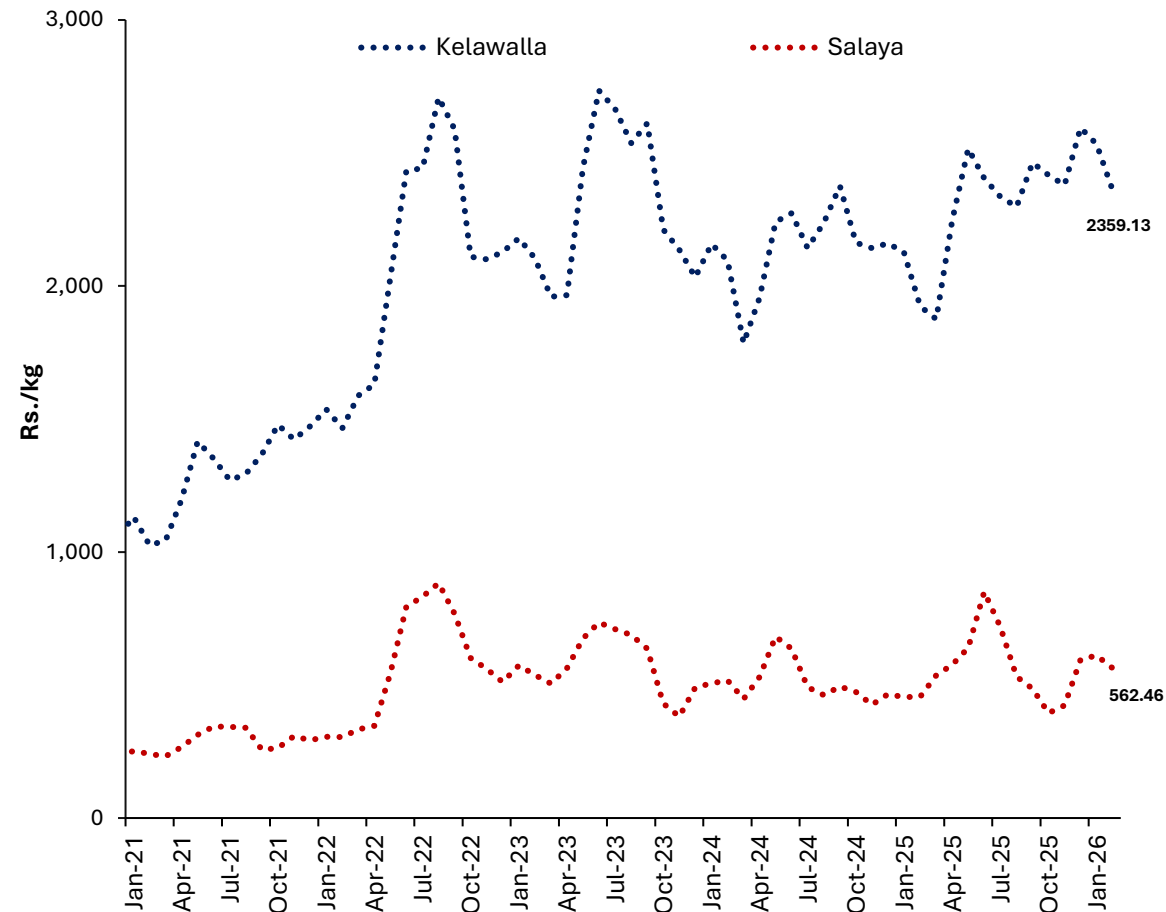


Fish Production



Production (MT '000)	2023	2024	2025
Marine	294	308	308
Inland	113	102	56
Total	407	411	364

Retail Fish Prices

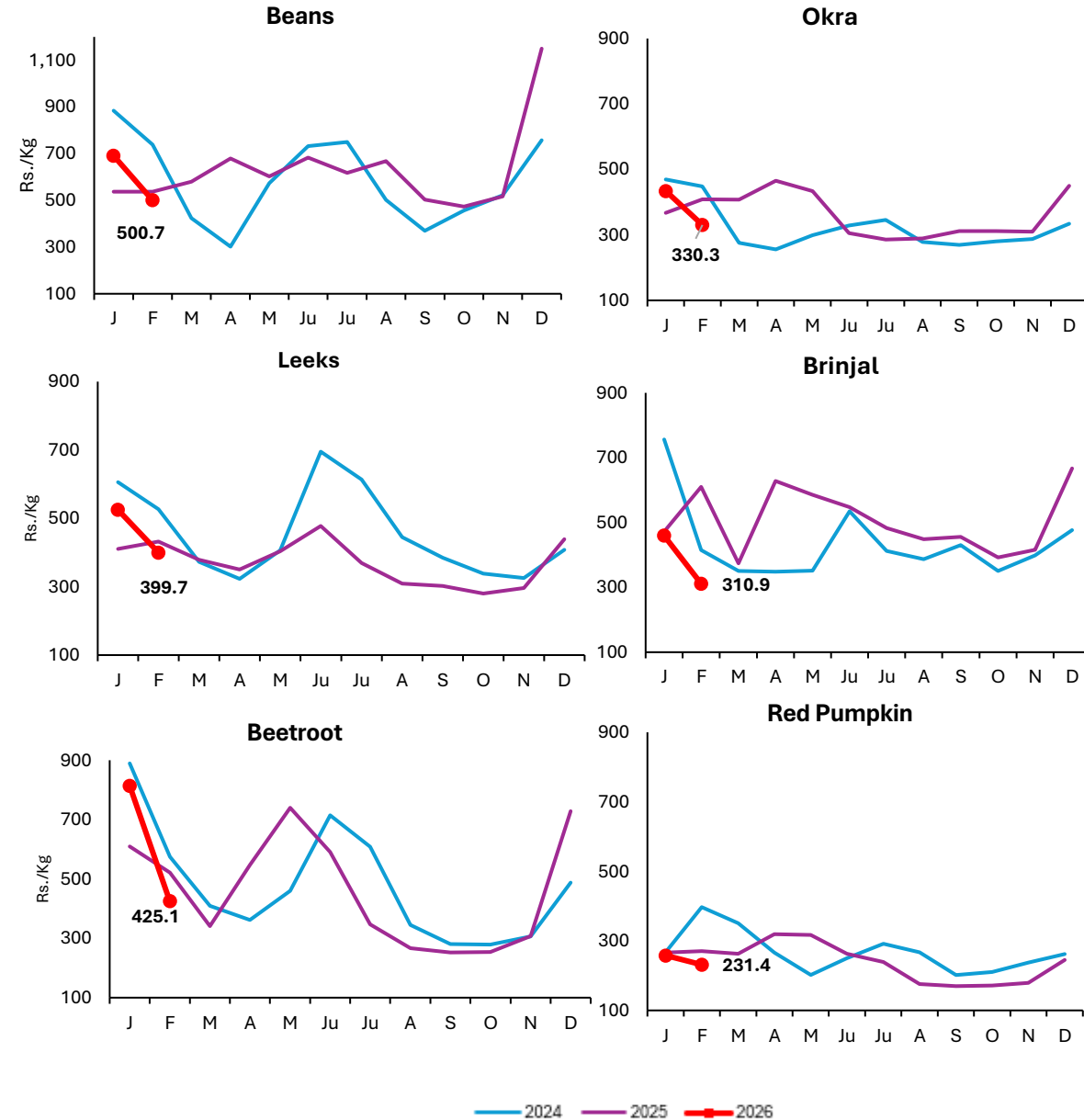


- According to provisional data, fish production declined by **25.2%** (y-o-y) in December 2025 with a notable **55.4%** (y-o-y) decline in inland fish production and a **18.4%** (y-o-y) decline in marine fish production
- However marine fish production during the year 2025 remained same as the previous year

Vegetable Production (MT)

	22/23 Maha	2023 Yala	23/24 Maha	2024 Yala	24/25 Maha	2025 Yala	2025 Yala Y-o-Y Change
Up Country							
Tomatoes	46,244	34,169	39,293	34,945	28,480	33,012	↓
Cabbage	52,310	47,773	58,552	48,242	41,811	20,495	↓
Carrot	40,084	25,267	48,836	24,374	25,604	18,886	↓
Beetroot	17,178	21,444	17,332	20,034	15,825	12,033	↓
Raddish	26,955	27,557	40,159	27,567	31,271	15,974	↓
Beans	41,139	25,287	36,345	26,128	20,468	26,225	↑
Low Country							
Luffa	24,852	18,417	22,225	18,521	20,465	18,670	↑
Okra	38,984	31,351	37,620	35,003	40,296	32,681	↓
Brinjal	80,637	54,450	69,584	54,660	64,545	55,578	↑
Cucumber	21,013	26,603	17,937	27,161	18,982	15,388	↓
Red pumpkin	59,163	41,779	46,890	42,565	48,389	42,975	↑
Ash plantain	35,369	22,833	33,783	24,477	29,506	22,124	↓
Long bean	35,395	27,456	35,539	28,855	34,926	29,515	↑

Retail Vegetable Prices

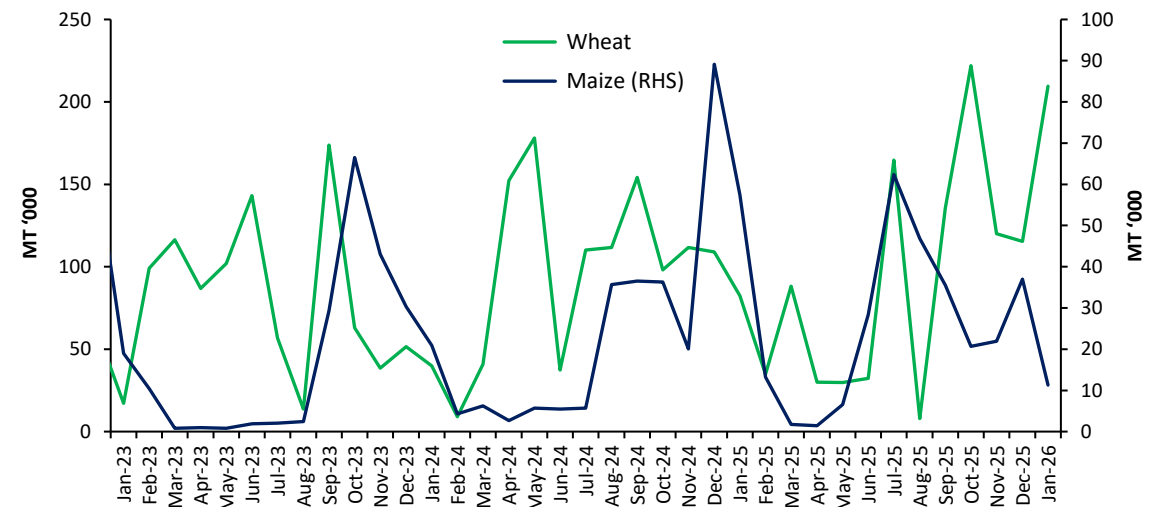
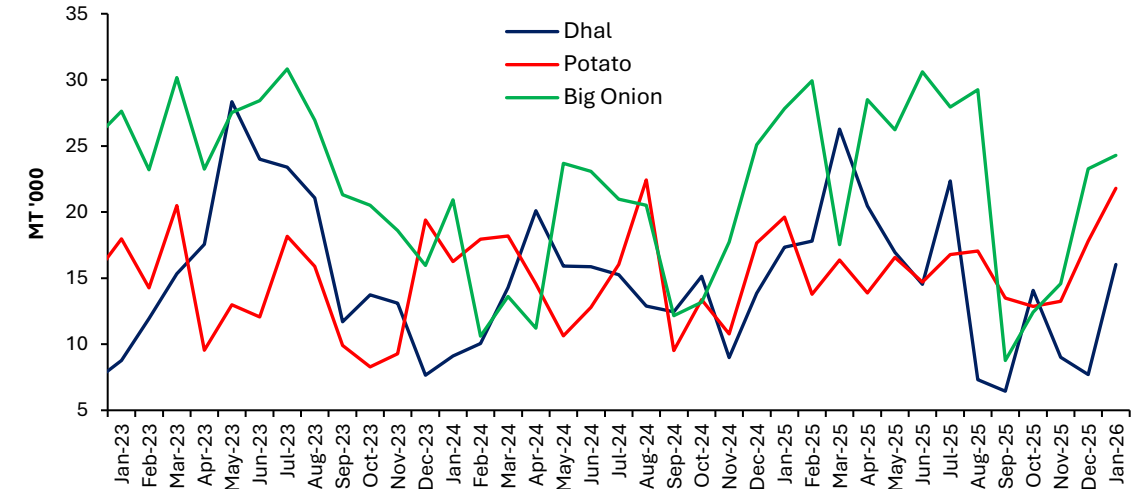


Other Field Crops

	22/23 Maha	2023 Yala	23/24 Maha	2024 Yala	24/25 Maha	2025 Yala	2025 Yala Y-o-Y Change
Potato	19,723	21,026	21,291	20,916	15,010	14,360	↓
Red Onion	26,673	22,678	24,762	19,749	24,440	18,311	↓
Big Onion	329	4,755	257	8,572	395	20,994	↑
Green Chillie	42,270	25,128	40,438	26,200	38,285	23,136	↓
Cowpea	7,022	5,779	5,955	5,458	6,307	4,546	↓
Black gram	8,346	1,437	8,518	1,828	7,224	1,790	↓
Maize	198,601	22,647	196,871	26,626	245,351	26,705	↑
Ground Nut	19,014	10,666	17,336	11,626	18,751	10,594	↓
Gingelly	2,701	8,651	2,210	8,293	1,675	8,576	↑
Green gram	6,940	5,514	6,156	8,909	6,754	9,089	↑

Imports (MT)	2024	2025	2025 Jan	2026 Jan
Dhal	163,881	180,225	17,341	16,037
Potato	180,121	186,145	19,625	21,787
Big Onion	212,720	276,862	27,814	24,297

Import Trend of Selected Food Items



Sugar

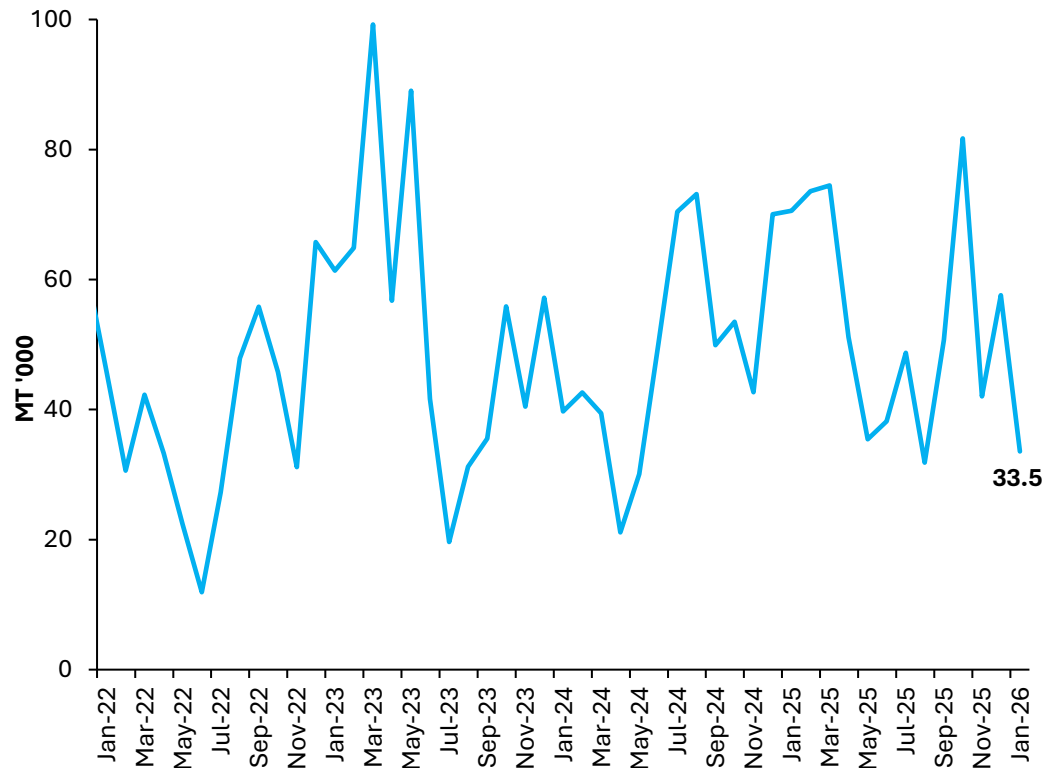
	2025 (Jan-Feb)	2026 (Jan-Feb)
--	----------------	----------------

Sugar Production (MT) 2,702 **2,799**

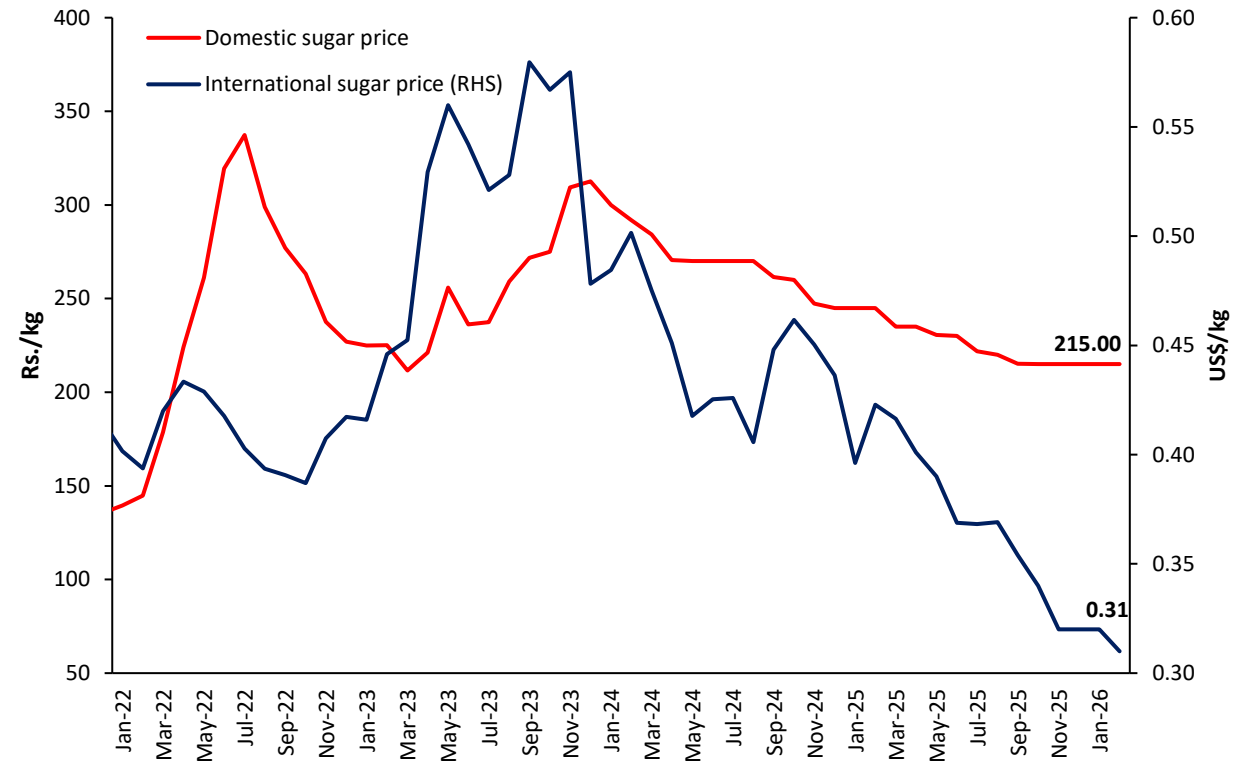
	2025-Jan	2026-Jan
--	----------	----------

Sugar Imports (MT) 80,102 **68,951**

Sugar Import Trend



Sugar Price Trend



International sugar prices continued to decrease in February 2026 due to record sugarcane harvests with increased sugar production in Brazil, Thailand, and India

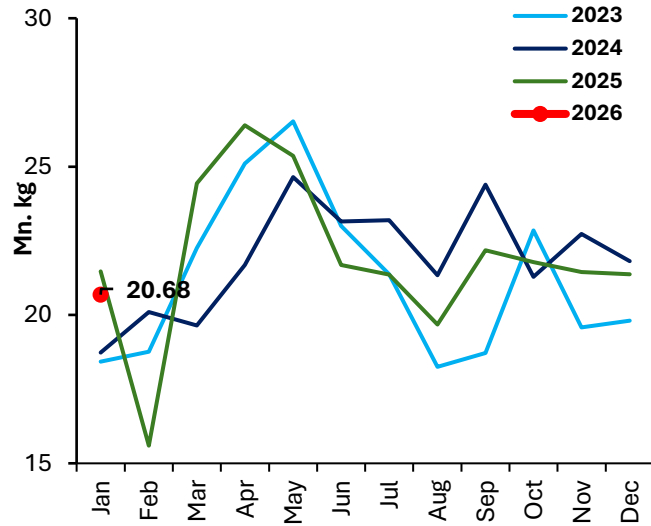
Livestock

	2024 December	2025 November	2025 December	
Production	Egg (mn)	308	295	298
	Chicken (000 MT)	24	25	25
Price	Egg-White (Rs./egg)	38.3	30.1	36.6
	Egg - Red (Rs./egg)	38.5	31.7	39.7
	Chicken (Rs./kg)	1047.7	1090.4	1094.5
Cost of Production	Egg (Rs./egg)	33.3-37.0	29.4-32.4	29.1-34.4
	Chicken (Rs./kg)	746.5	775.0	790.0

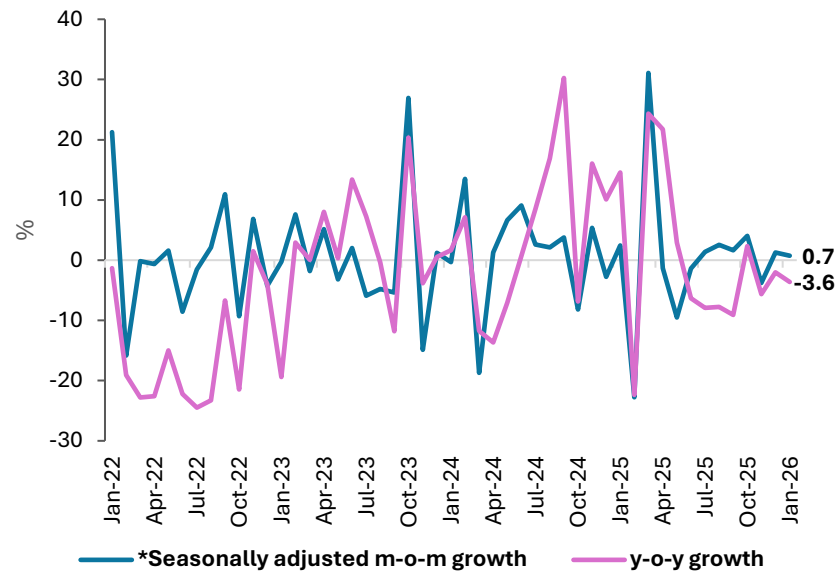
Feed Ingredients (Rs./kg)	2024 December	2025 November	2025 December
Maize	200.6	171.0	193.9
Soya bean meal	224.0	227.2	227.6
Fish meal	300.0-497.5	380.0-610.0	480.0-610.0
Rice polish	154.8	127.0	131.0

Tea

Tea Production



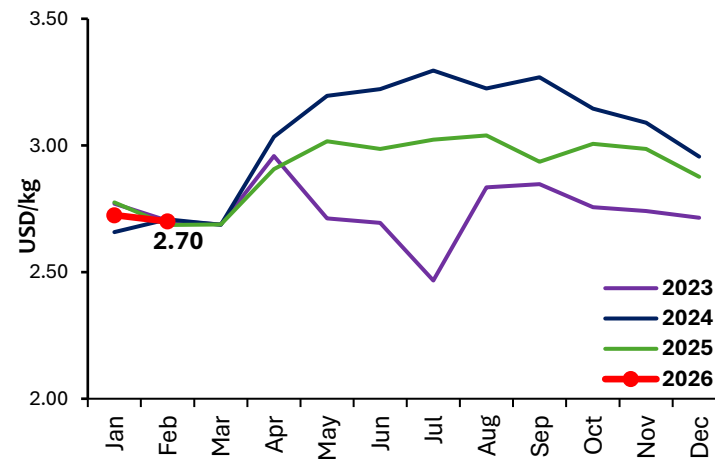
Tea Production Growth



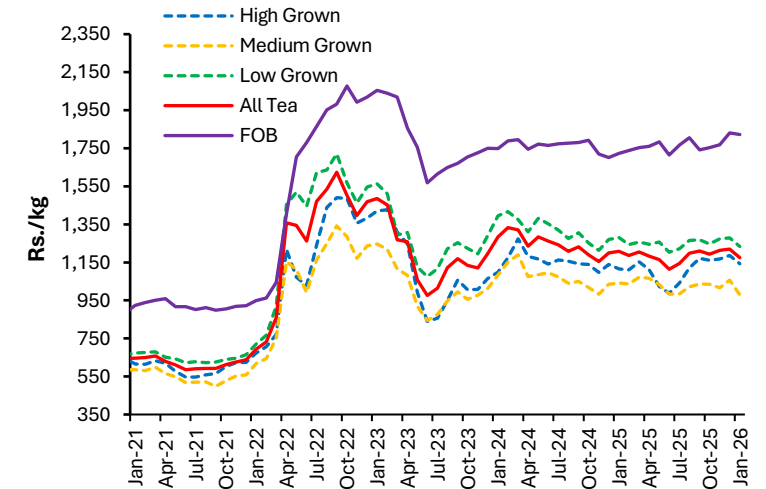
- Domestic tea production decreased by **3.6%** (y-o-y) during the month of January 2026. However, this is a **0.7%** m-o-m (seasonally adjusted) growth
- Global tea prices slightly declined in February 2026 compared to the previous month, with only auction prices of Mombasa increased while Kolkata and Colombo recording decreases

Tea Production (mn kg)	2025	2025 Jan	2026 Jan	Growth %
High grown	56.2	4.7	4.9	4.1
Medium grown	47.7	3.5	3.5	0.03
Low grown	158.8	13.3	12.3	(7.3)
Total	262.8	21.5	20.7	(3.6)

International Tea Prices



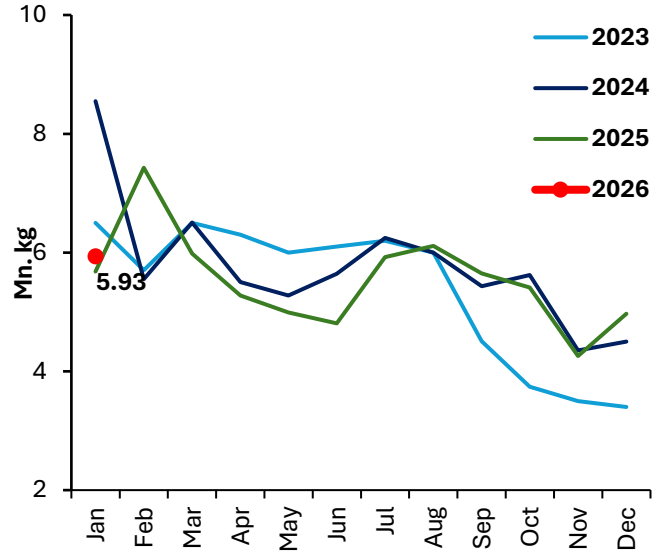
Tea Auction Prices & FOB Prices



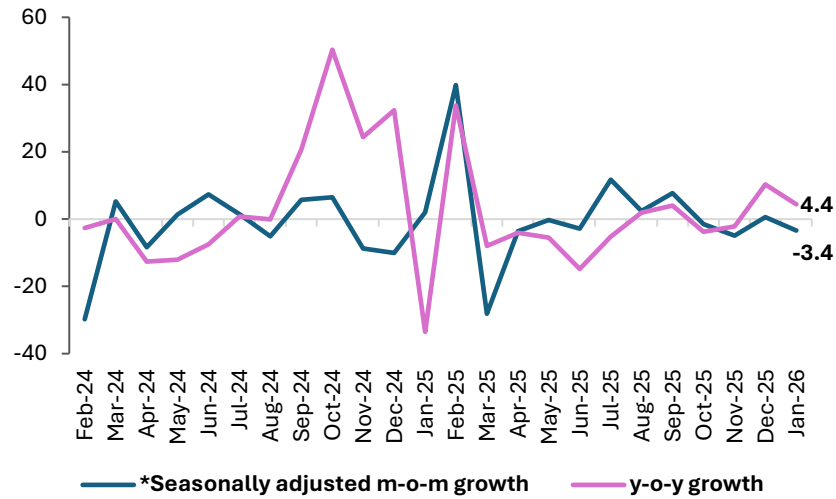
Sources: Sri Lanka Tea Board, Colombo Tea Brokers' Association, Sri Lanka Customs, Central Bank of Sri Lanka, World Bank
*Seasonally adjusted using X13 procedure

Rubber

Rubber Production



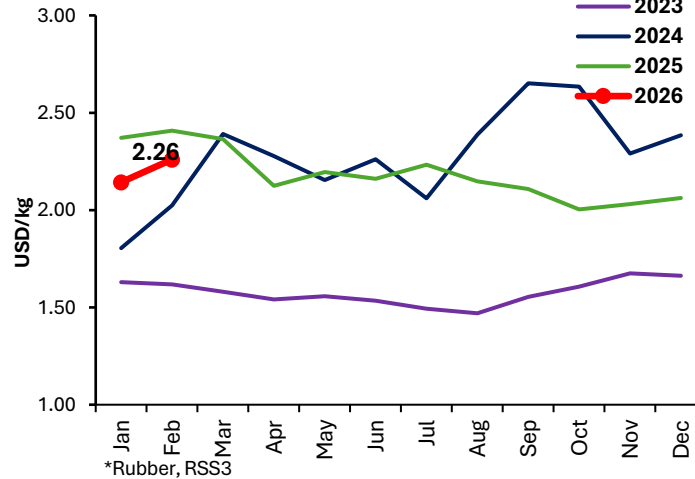
Rubber Production Growth



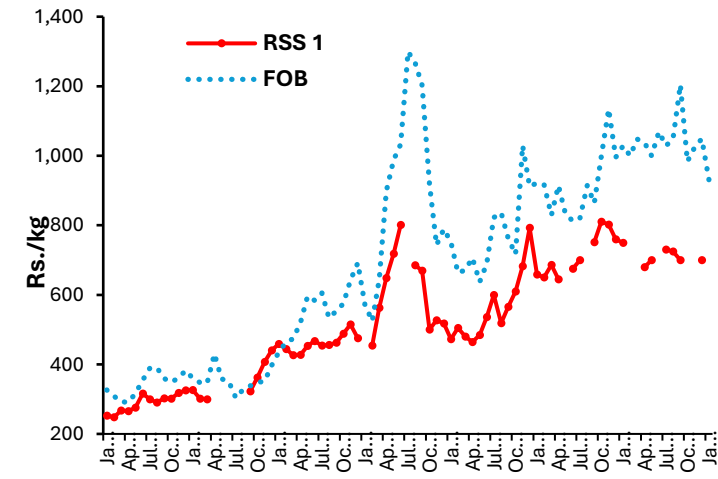
- Domestic rubber production recorded a year-on-year increase of **4.4%** in January 2026. However, this a **-3.4%** m-o-m (seasonally adjusted) growth
- Global natural rubber prices increased in February 2026 due to increased demand

Rubber Production (mn kg)	2025	2025 Jan	2026 Jan	Growth %
Sheet Rubber	33.0	2.6	2.7	4.4
Crepe Rubber	11.1	1.0	0.9	(11.6)
Other	22.4	2.1	2.4	12.3
Total	66.5	5.7	5.9	4.4

International Rubber Prices



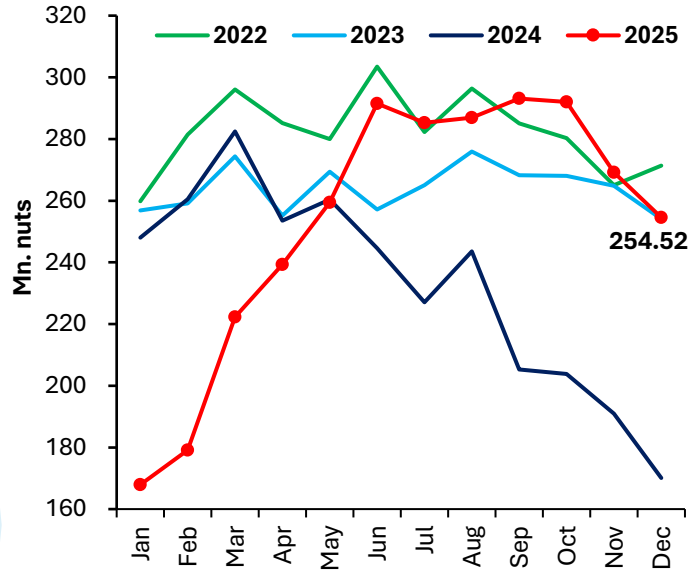
Rubber Auction Prices & FOB Prices



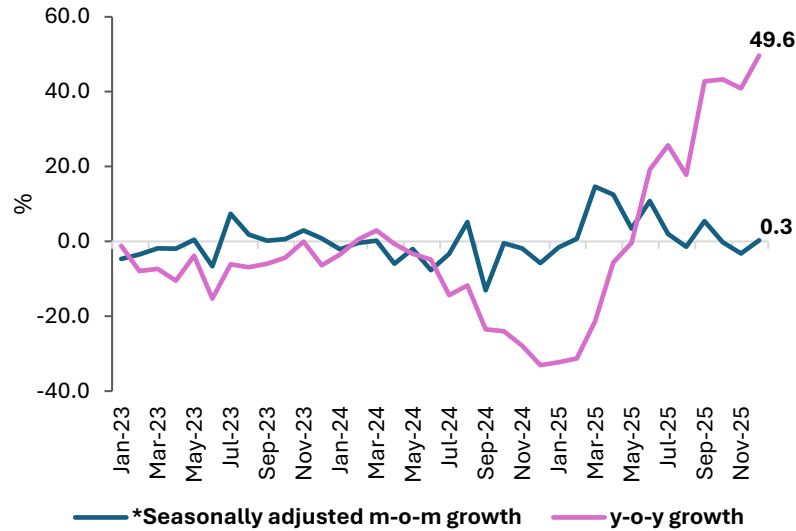
Sources: Rubber Development Department, Ceylon Chamber of Commerce, Sri Lanka Customs, Central Bank of Sri Lanka, World Bank
*Seasonally adjusted using X13 procedure

Coconut

Coconut Production



Coconut Production Growth

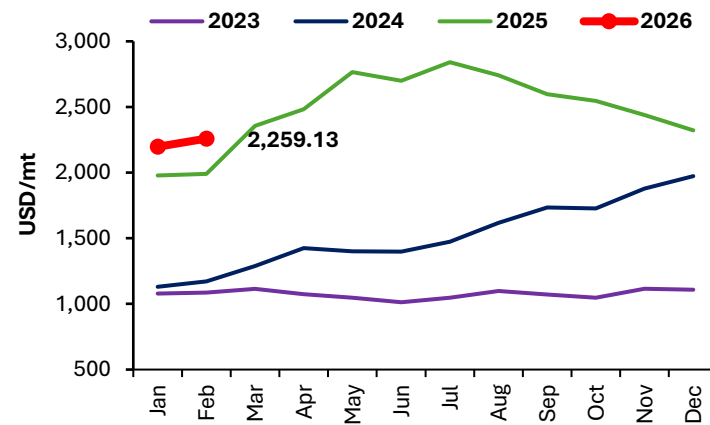


- Coconut production recorded a **49.6%** y-o-y increase in December 2025 which can also attributed to base effect following the sharp production decline in 2024. However, there is only **0.3%** m-o-m (seasonally adjusted) growth
- International coconut oil prices increased in February 2026, driven by export restrictions imposed by major producing countries amid heightened domestic demand.

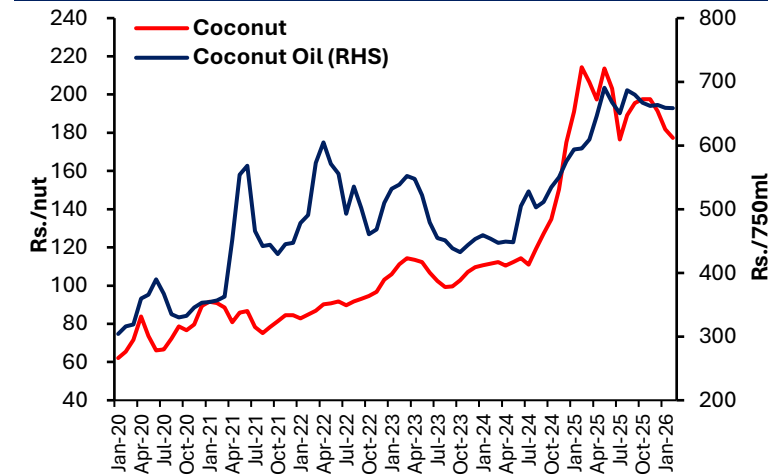
PLANTATIONS

Coconut Production	2023	2024	2025	Growth %
Coconut (mn nuts)	3,170	2,790	3,040	9.0
Desiccated Nut (MT)	31,985	33,177	34,381	3.6
Coconut Oil (MT)	43,475	30,842	33,696	9.3

International Coconut Oil Prices



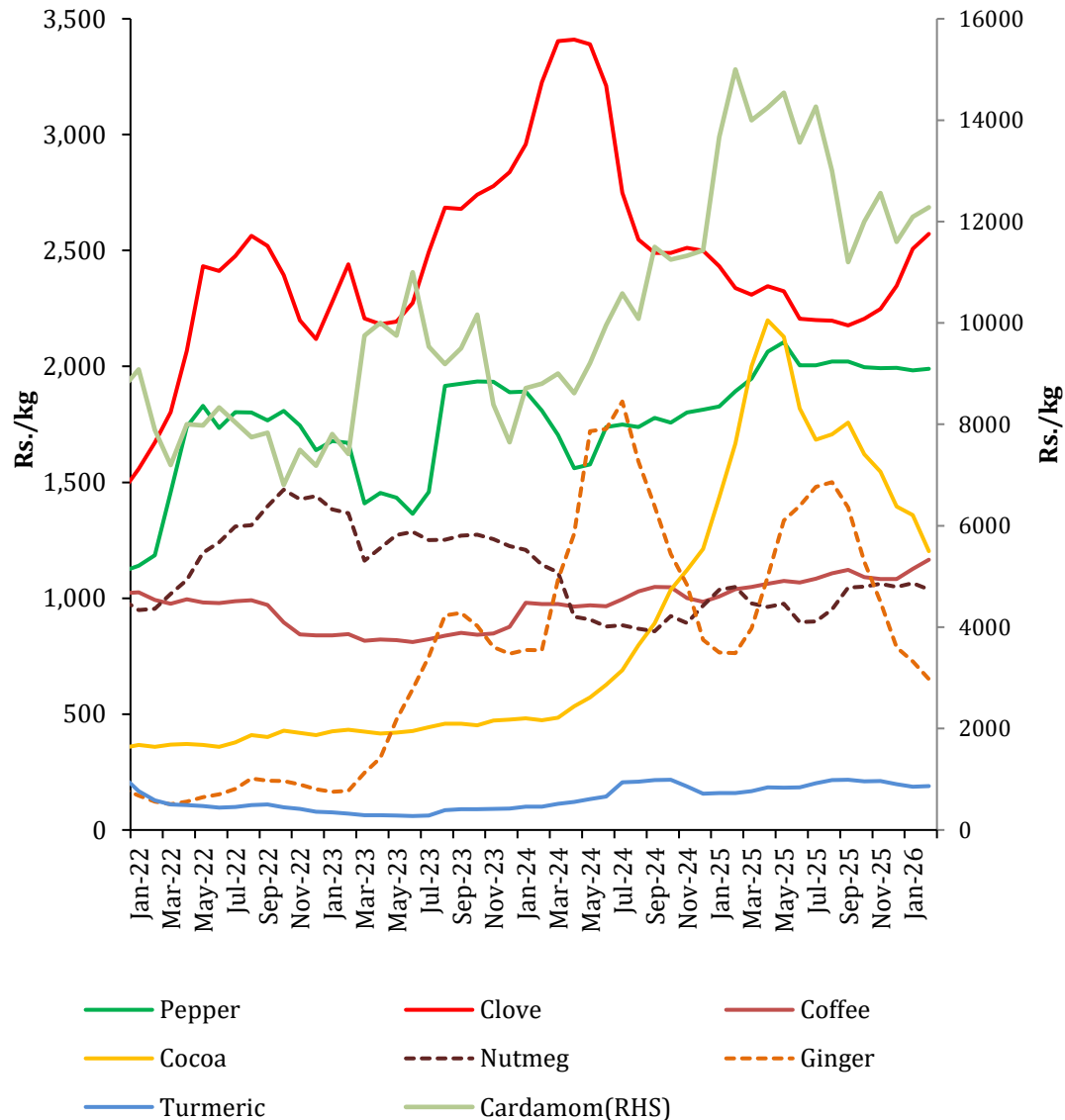
Retail Price of Coconut and Coconut Oil



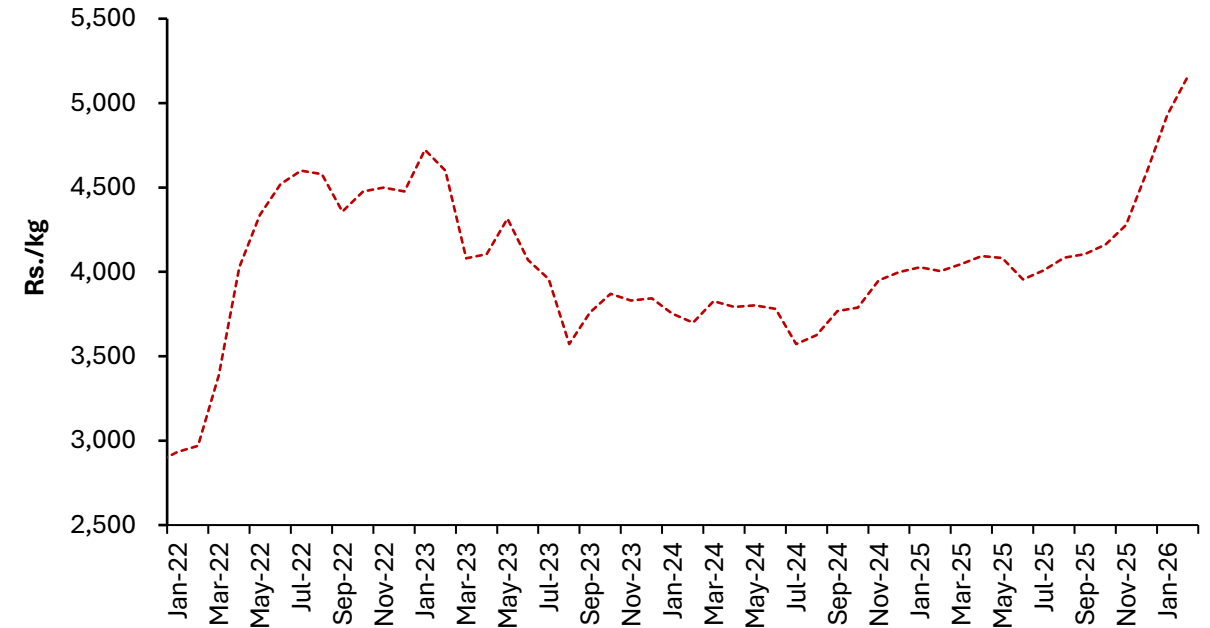
Sources: Coconut Development Authority, Department of Census and Statistics, World Bank
*Seasonally adjusted using X13 procedure

Other Export Agriculture

Farmgate/Producer Prices of Selected Export Agriculture Crops



Farmgate/Producer Price of Cinnamon



- In February 2025, the market prices of export crops such as cocoa, nutmeg and ginger declined while pepper, clove, coffee, cardamom, tumeric and cinnamon prices registered an increase
- Earnings from exports of spices decreased during January 2026 (y-o-y), mainly due to reduction in Pepper exports volumes to India

Import Trends of Agricultural Input

Imports	2024	2025	2025 Jan	2026 Jan
---------	------	------	----------	----------

Plants and Seeds

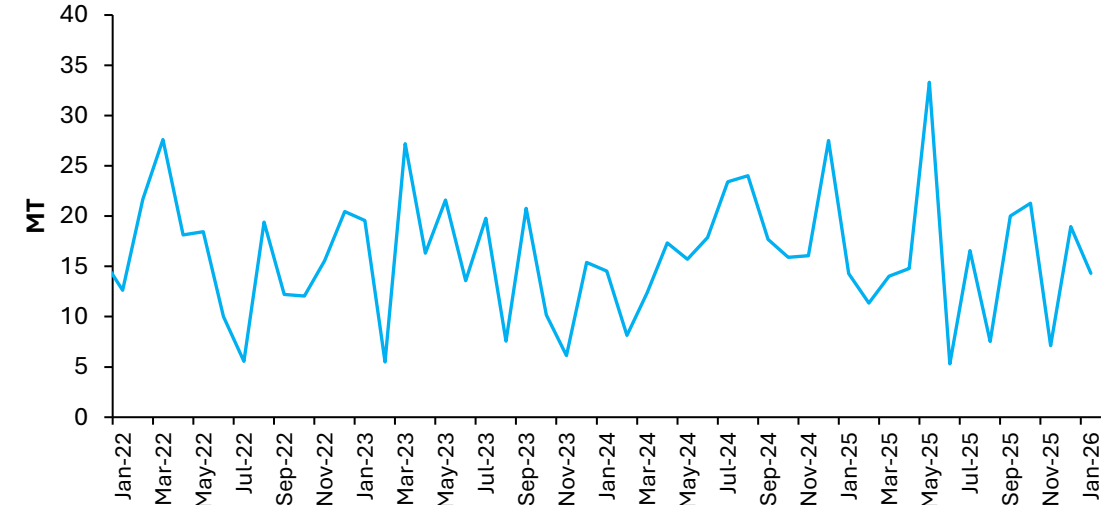
Vegetable seeds (MT)	211	185	14	14
Potato seed (MT)	773	1,002	348	742
Plants & parts (MT)	6,874	5,297	75	-
Live trees and other plants (No. '000)	1,248	972	5	38

Fertilizers (MT '000)

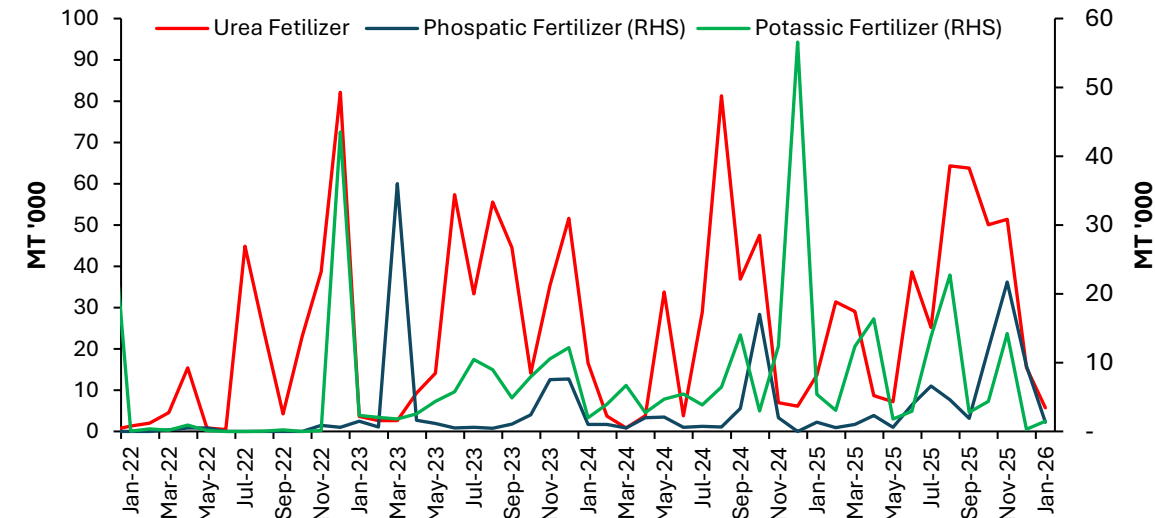
Urea	270	399	14	6
Other nitrogenous fertilizers	68	95	13	3
Phosphatic	31	66	1	1
Potassic	122	100	5	1
Other fertilizers	16	53	2	5

Import Trends of Selected Agricultural Inputs

Vegetable Seeds

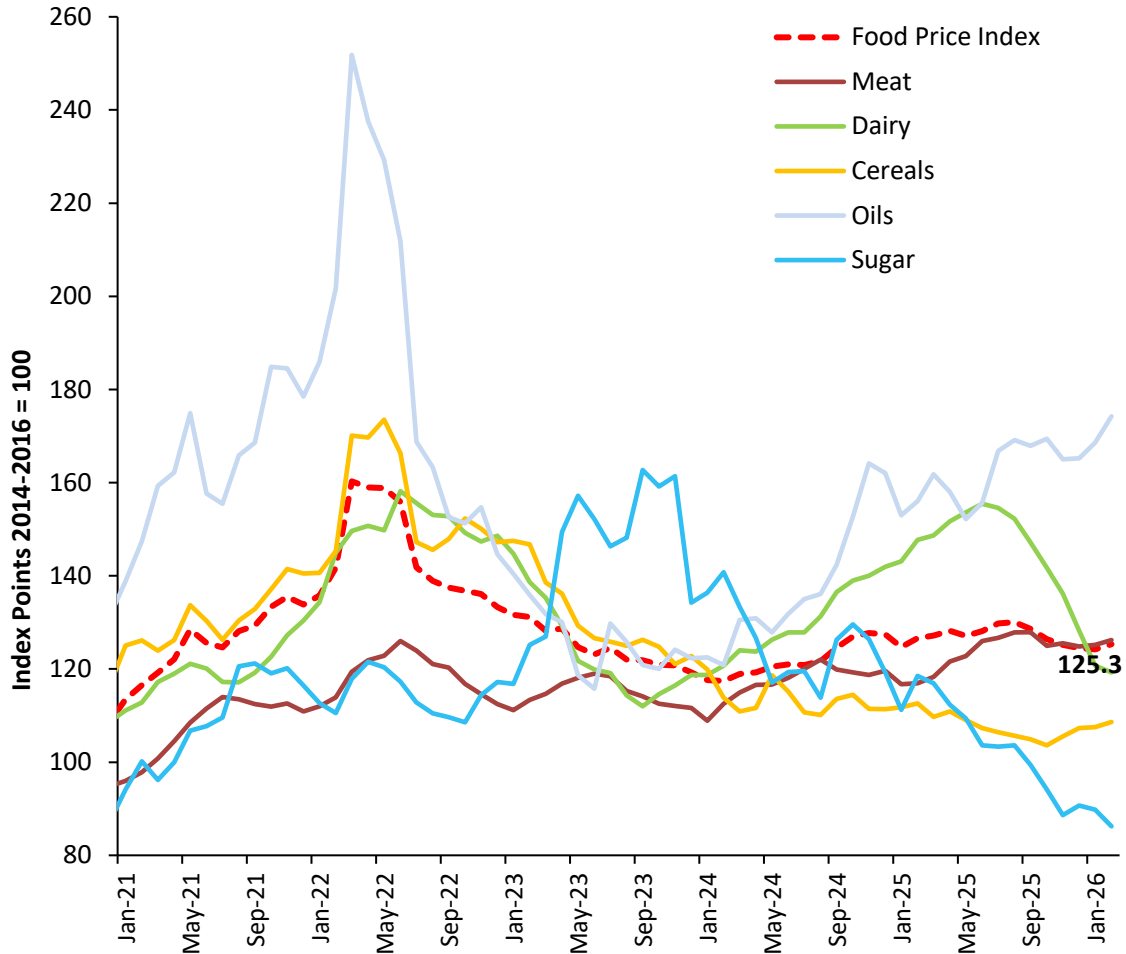


Fertilizers

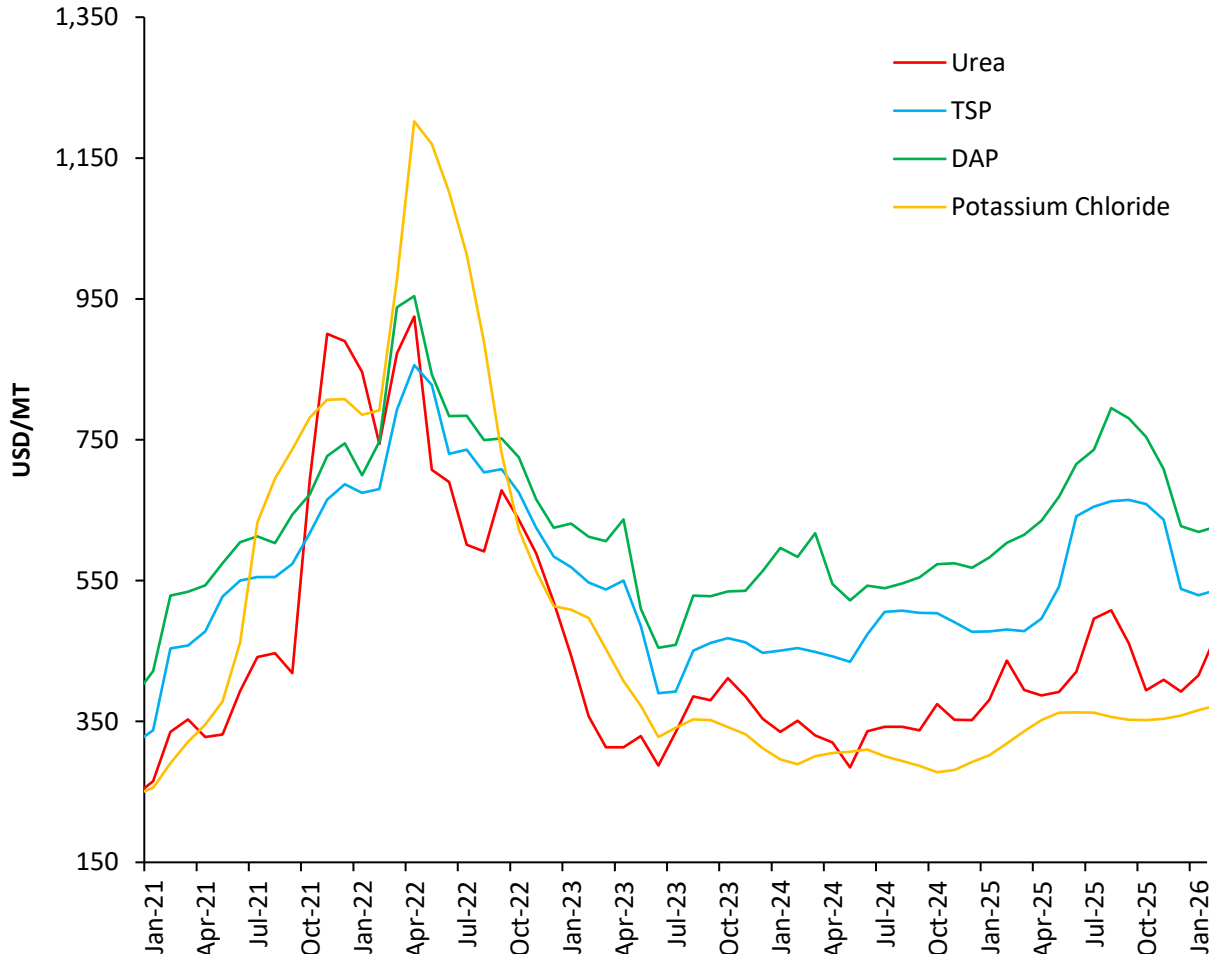


International Agricultural Commodity Prices

FAO Food Price Index



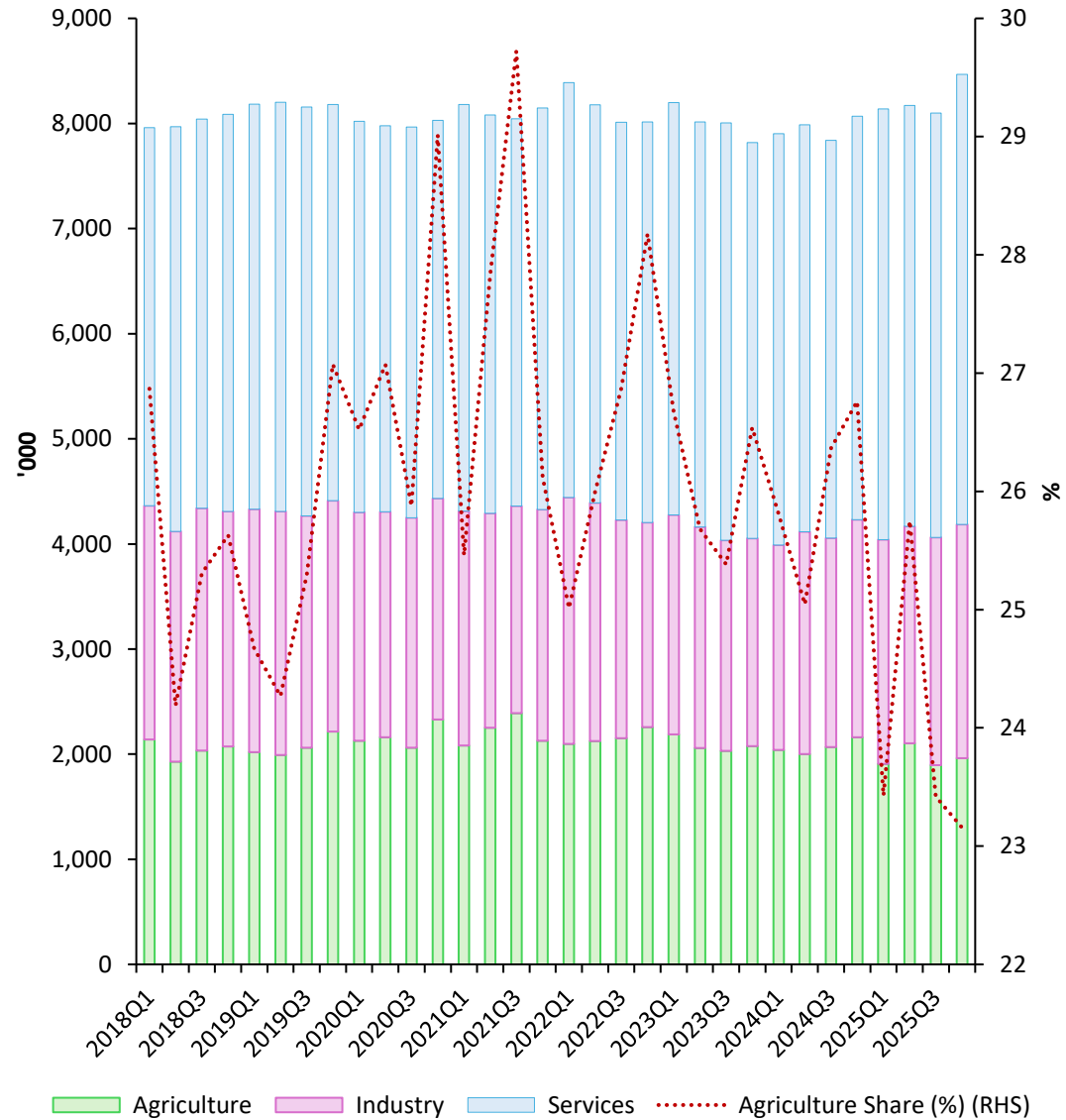
International Fertilizer Prices



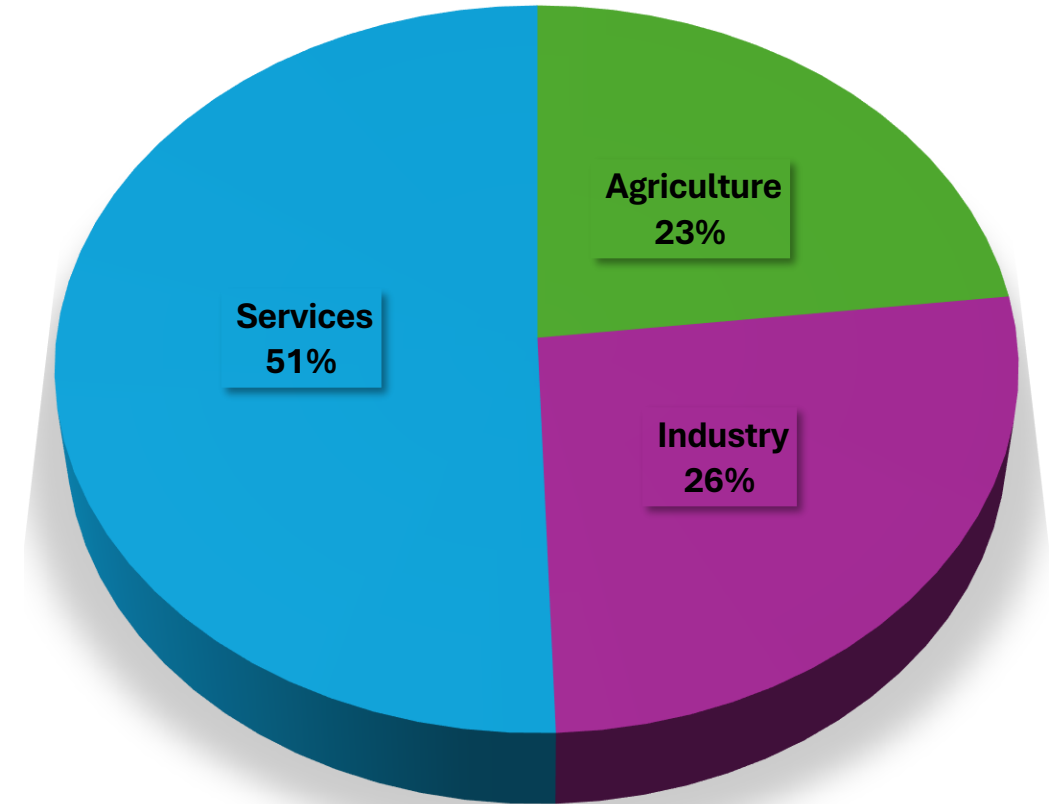
The FAO Food Price Index increased slightly in February 2026 compared to the previous month, with prices rising in categories such as cereals, meats and vegetable oils, while other food categories of dairy and sugar declined during the month

Employment in Agriculture

Sector-wise Employed Population



Sector-wise Employed Population – 2025 Q4





Datasets are accessible via:

<https://www.cbsl.gov.lk/en/statistics/statistical-tables/real-sector/production-indicators>

**The figures for 2024 and 2025 provided in this data summary are highly provisional.*



**Economic Research Department
Central Bank of Sri Lanka**