

HIGHLIGHTS

Paddy production for 2025/26 Maha season, based on the sown extent as of end February 2026, is forecasted at 2.81 million metric tons, a 2.4% increase from the previous Maha season



Domestic tea production decreased by 14.5% (y-o-y) during the month of March 2026, due to extensive dry weather conditions



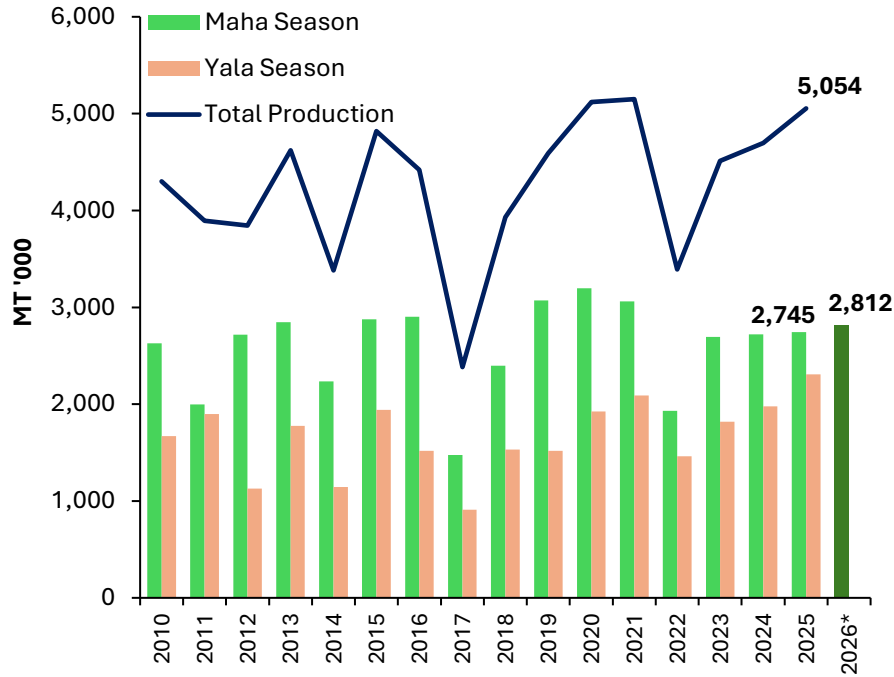
Local rubber production decreased in March 2026 by 11.0% (y-o-y), whilst global rubber prices have increased



Total marine fish production declined (y-o-y) in March 2026



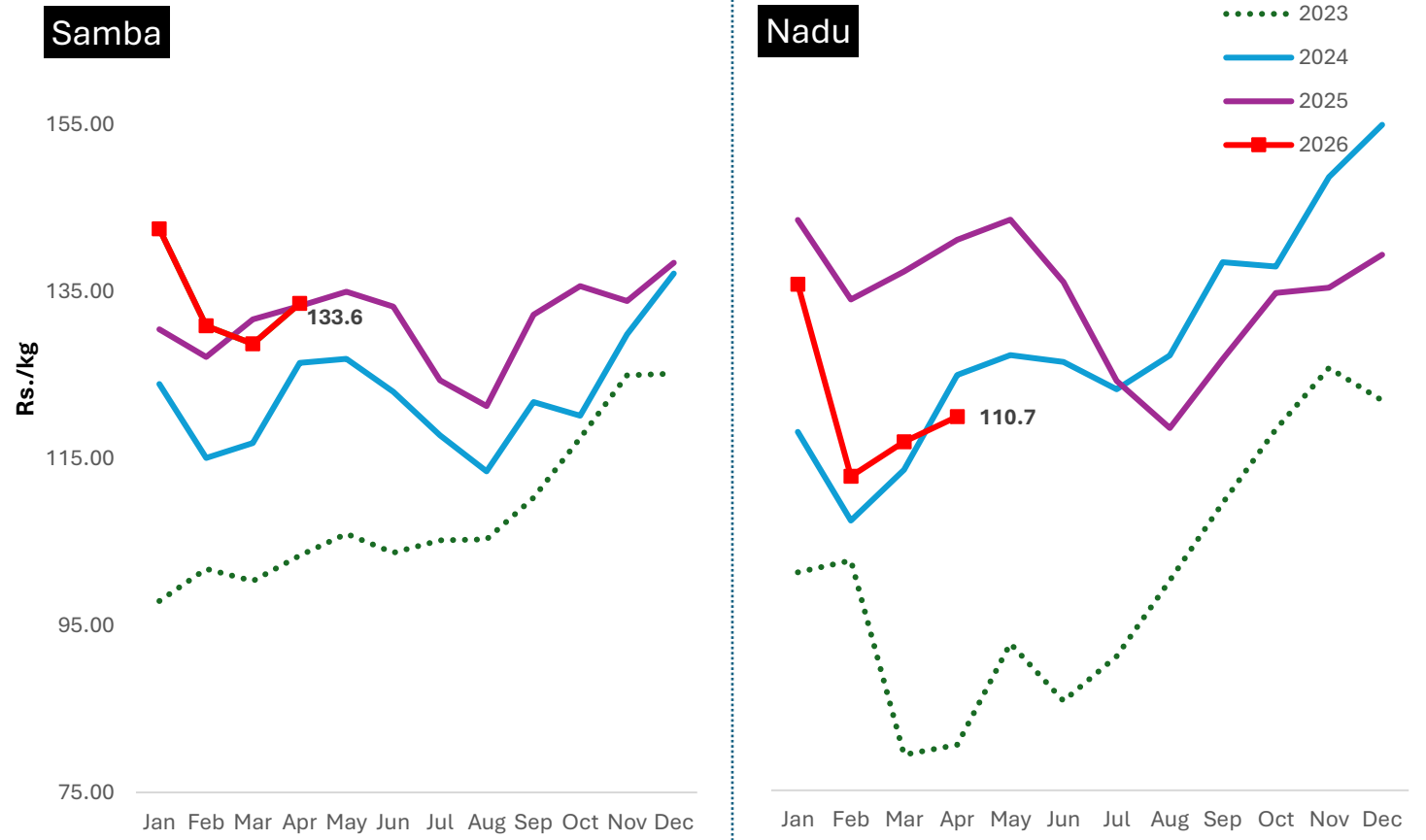
Paddy Production



*2025/26 Maha season production is based on the Department of Agriculture forecast

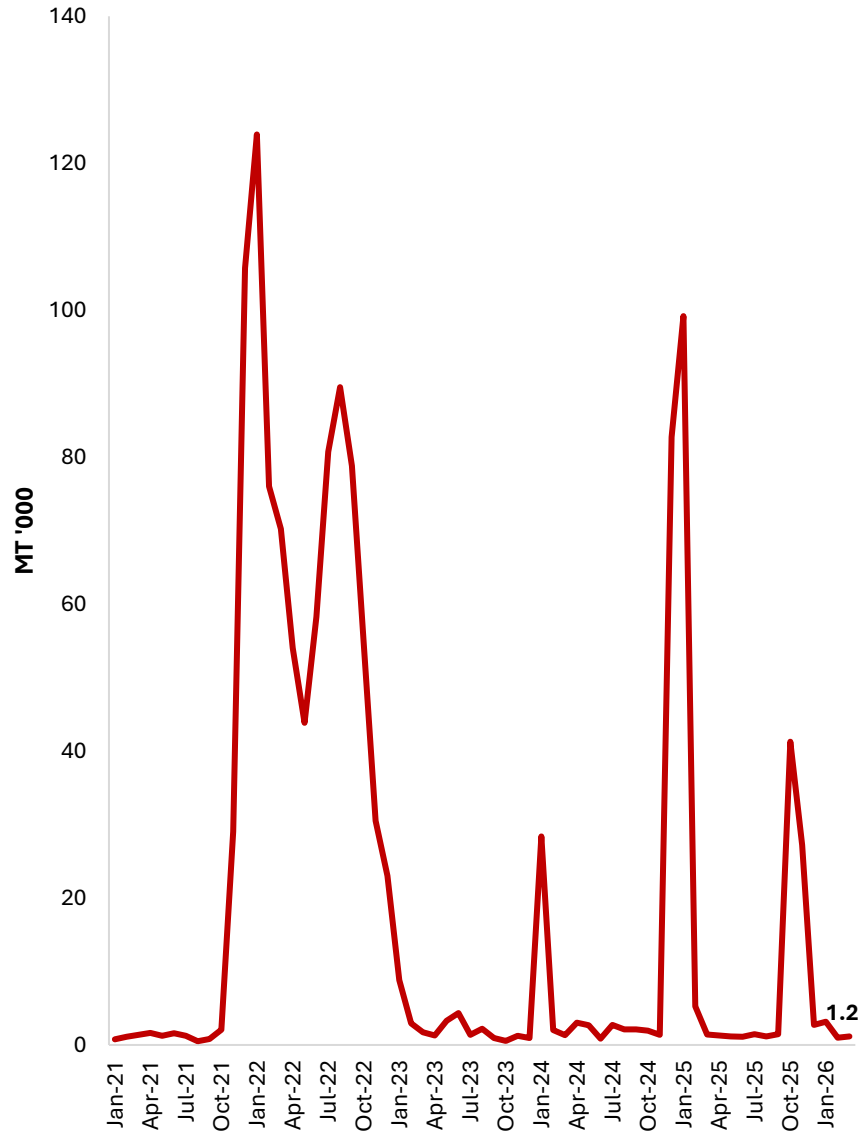
Season	2023 (mn mt)	2024 (mn mt)	2025 (mn mt)	Growth % (y-o-y)
Maha	2.70	2.72	2.74	0.9
Yala	1.82	1.98	2.31	16.8
Annual	4.51	4.70	5.05	7.6

Farmgate/Producer Prices of Paddy



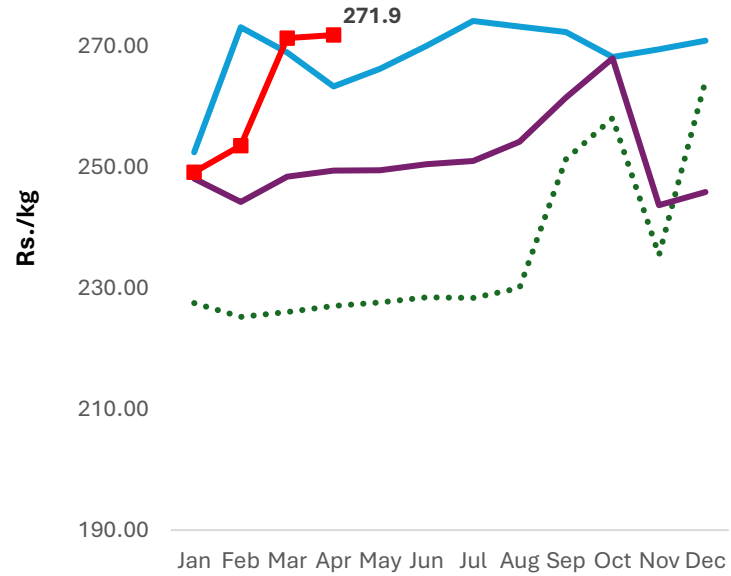
- Paddy production for 2025/26 Maha season is estimated as **2.81** million metric tons (**2.4%** increase from the previous Maha season) based on sown extent reported, including re-cultivation extent, as at end February 2026.
- Annual paddy production for the year 2025 was recorded as **5.05** million metric tons (**7.6%** increase from the previous year)

Rice Imports

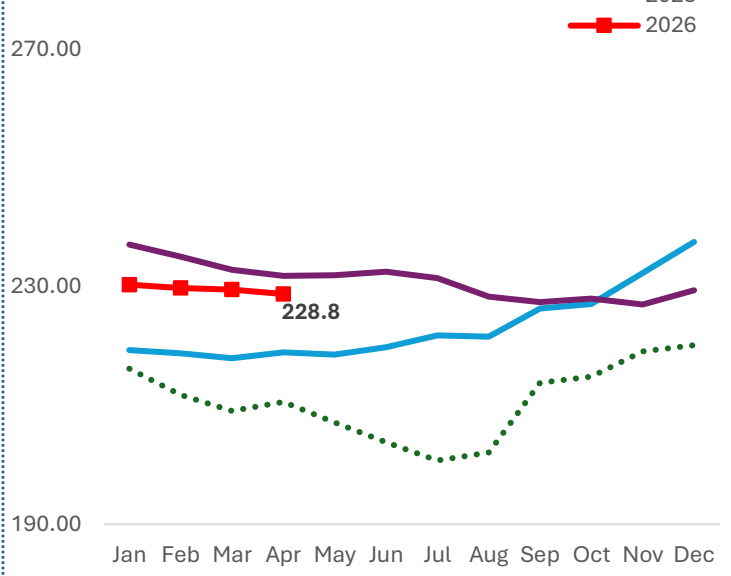


Retail Rice Prices

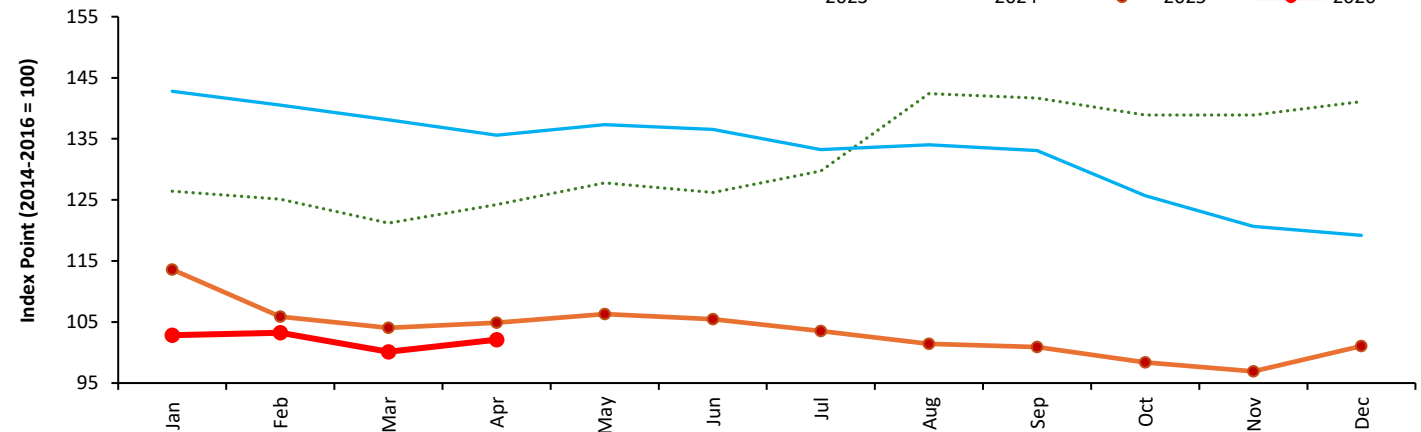
Samba



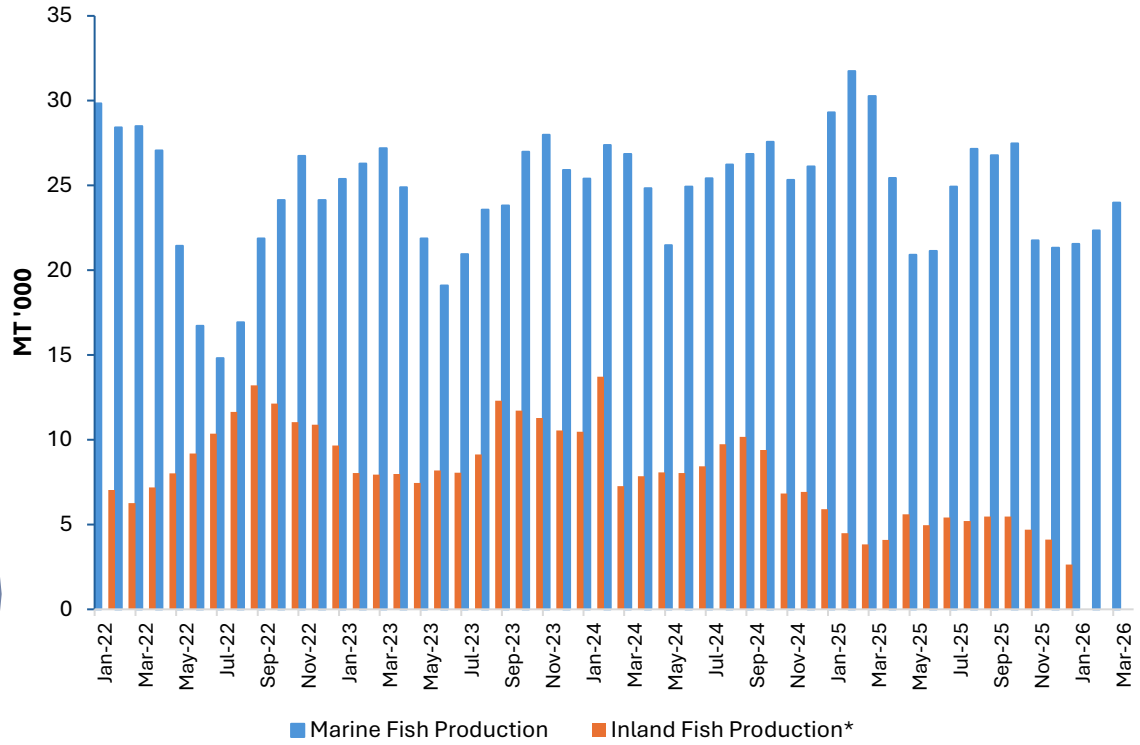
Nadu



FAO All Rice Price Index



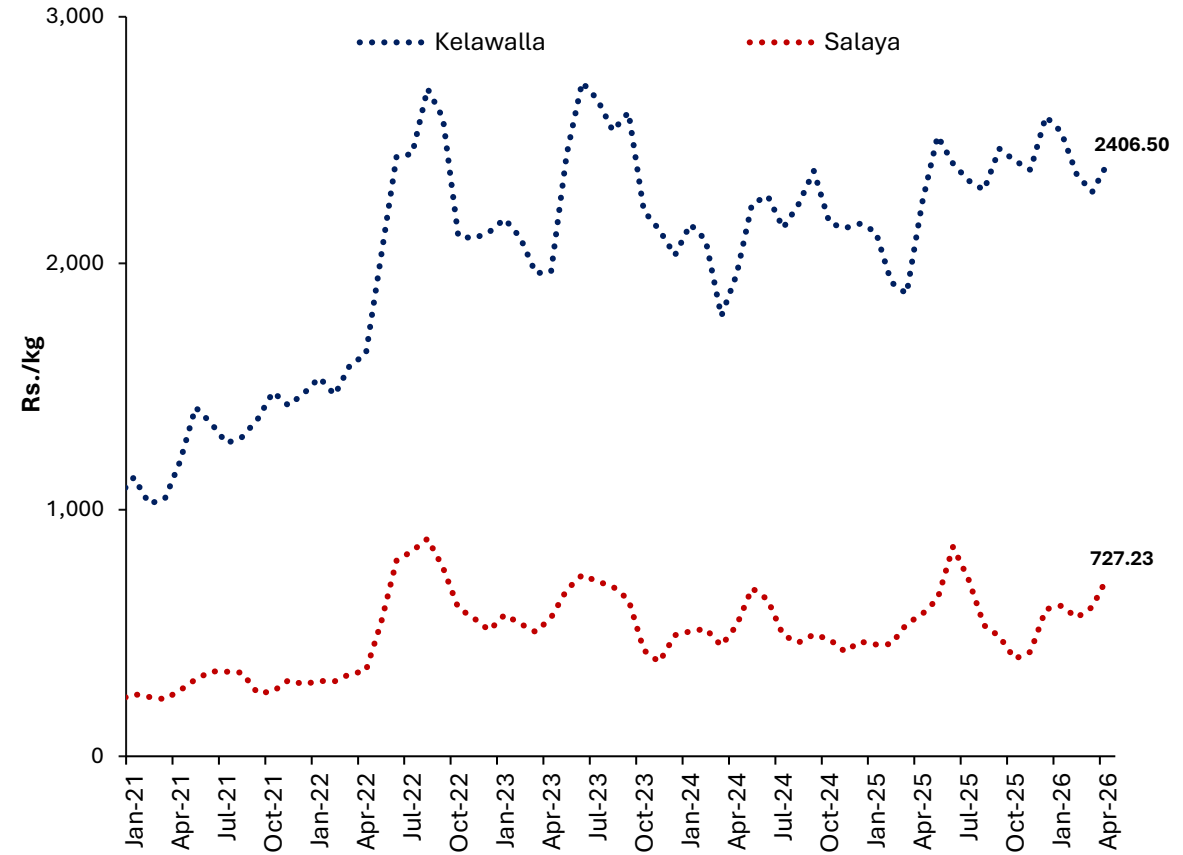
Fish Production



	2024	2025	2026 Jan-Mar
Marine Fish Production (MT '000)	308	308	67.9

*Inland Fish production data are not available since Jan 2026

Retail Fish Prices

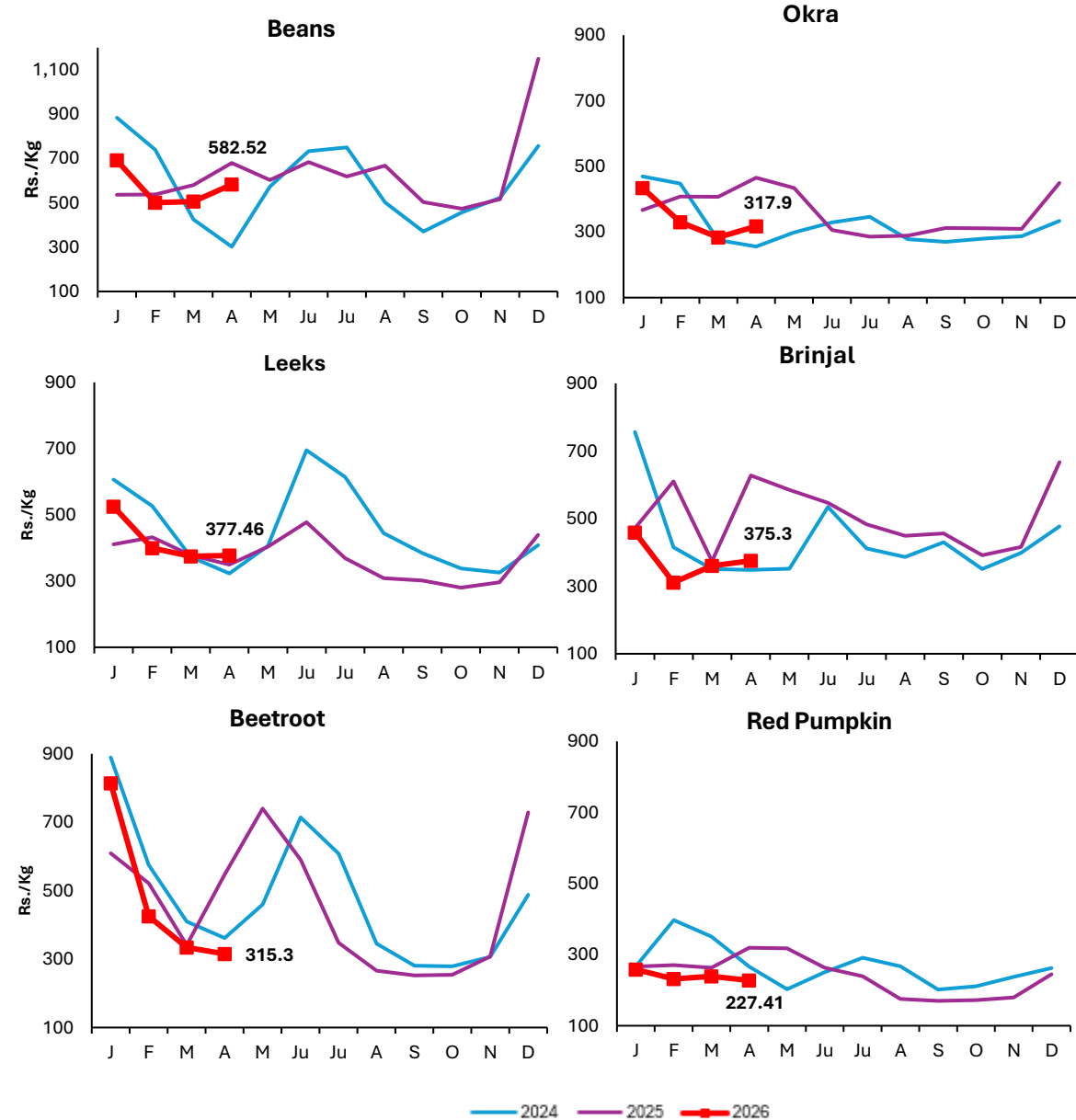


• According to provisional data, total marine fish production declined (y-o-y) in March 2026

Vegetable Production (MT)

	22/23 Maha	2023 Yala	23/24 Maha	2024 Yala	24/25 Maha	2025 Yala	2025 Yala Y-o-Y Change
Up Country							
Tomatoes	46,244	34,169	39,293	34,945	28,480	33,012	↓
Cabbage	52,310	47,773	58,552	48,242	41,811	20,495	↓
Carrot	40,084	25,267	48,836	24,374	25,604	18,886	↓
Beetroot	17,178	21,444	17,332	20,034	15,825	12,033	↓
Raddish	26,955	27,557	40,159	27,567	31,271	15,974	↓
Beans	41,139	25,287	36,345	26,128	20,468	26,225	↑
Low Country							
Luffa	24,852	18,417	22,225	18,521	20,465	18,670	↑
Okra	38,984	31,351	37,620	35,003	40,296	32,681	↓
Brinjal	80,637	54,450	69,584	54,660	64,545	55,578	↑
Cucumber	21,013	26,603	17,937	27,161	18,982	15,388	↓
Red pumpkin	59,163	41,779	46,890	42,565	48,389	42,975	↑
Ash plantain	35,369	22,833	33,783	24,477	29,506	22,124	↓
Long bean	35,395	27,456	35,539	28,855	34,926	29,515	↑

Retail Vegetable Prices

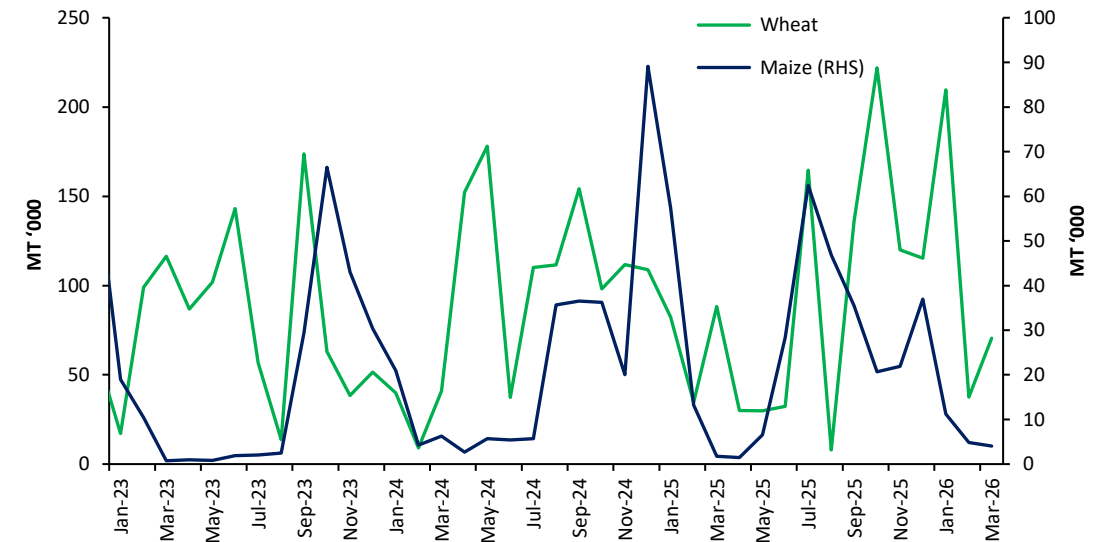
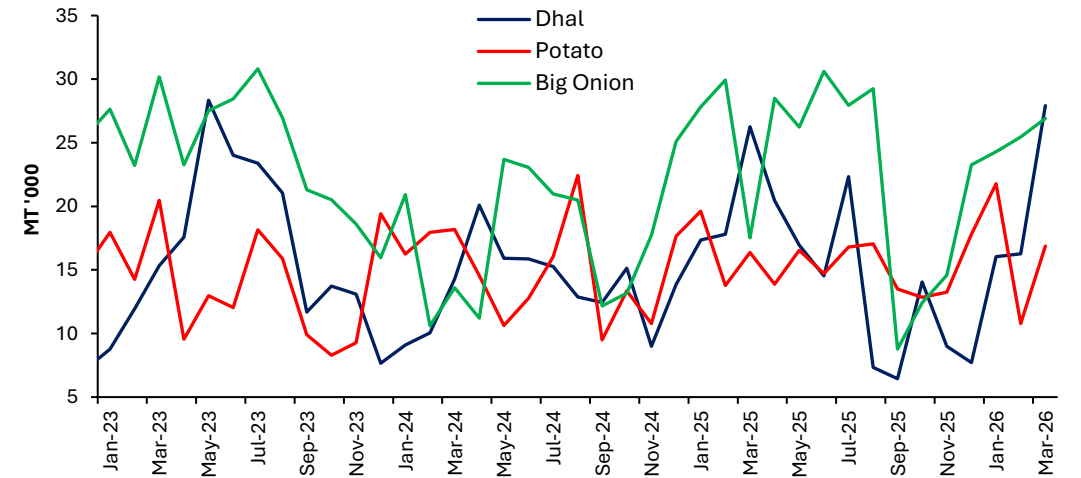


Other Field Crops

	22/23 Maha	2023 Yala	23/24 Maha	2024 Yala	24/25 Maha	2025 Yala	2025 Yala Y-o-Y Change
Potato	19,723	21,026	21,291	20,916	15,010	14,360	↓
Red Onion	26,673	22,678	24,762	19,749	24,440	18,311	↓
Big Onion	329	4,755	257	8,572	395	20,994	↑
Green Chillie	42,270	25,128	40,438	26,200	38,285	23,136	↓
Cowpea	7,022	5,779	5,955	5,458	6,307	4,546	↓
Black gram	8,346	1,437	8,518	1,828	7,224	1,790	↓
Maize	198,601	22,647	196,871	26,626	245,351	26,705	↑
Ground Nut	19,014	10,666	17,336	11,626	18,751	10,594	↓
Gingelly	2,701	8,651	2,210	8,293	1,675	8,576	↑
Green gram	6,940	5,514	6,156	8,909	6,754	9,089	↑

Imports (MT)	2024	2025	2025 Jan - Mar	2026 Jan - Mar
Dhal	163,881	180,225	61,397	60,213
Potato	180,121	186,145	49,772	49,458
Big Onion	212,720	276,862	75,291	76,662

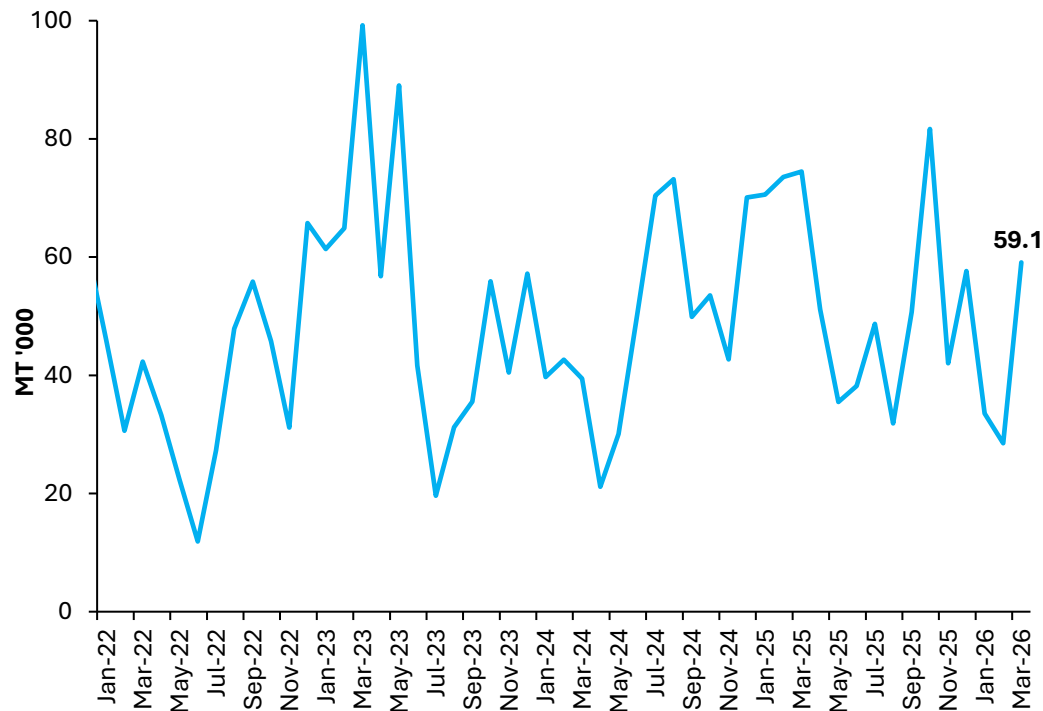
Import Trend of Selected Food Items



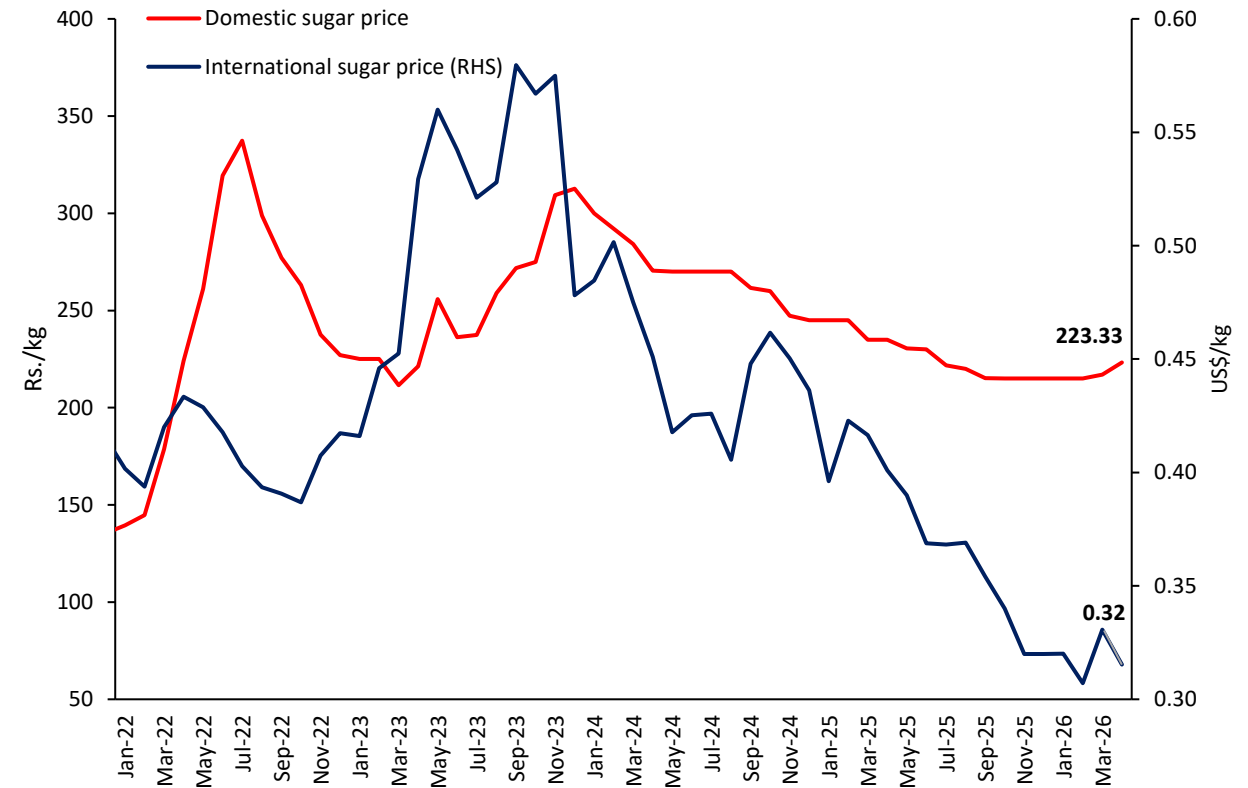
Sugar

	2025 Jan-Mar	2026 Jan-Mar
Sugar Production (MT)	7,672	8,540
Sugar Imports (MT)	218,623	121,128

Sugar Import Trend



Sugar Price Trend



International sugar prices increased in March 2026 due to expectations that Brazil, the world's largest sugar exporter, would use more sugarcane for ethanol production to be used as biofuel with surging global energy prices

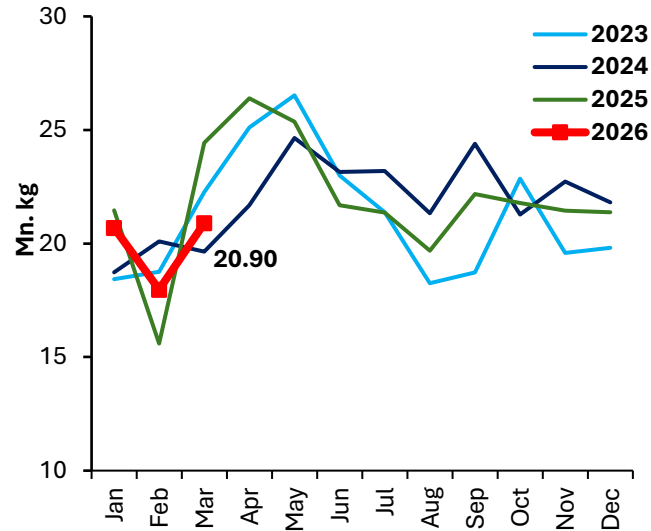
Livestock

	2025 January	2025 December	2026 January	
Production	Egg (mn)	302	298	295
	Chicken (000 MT)	22	25	24
Price	Egg-White (Rs./egg)	33.6	36.6	31.3
	Egg - Red (Rs./egg)	35.7	39.7	34.0
	Chicken (Rs./kg)	1019.0	1094.5	1095.7
Cost of Production	Egg (Rs./egg)	30.4-35.1	29.1-34.4	29.0-32.2
	Chicken (Rs./kg)	743.4	790.0	811.8

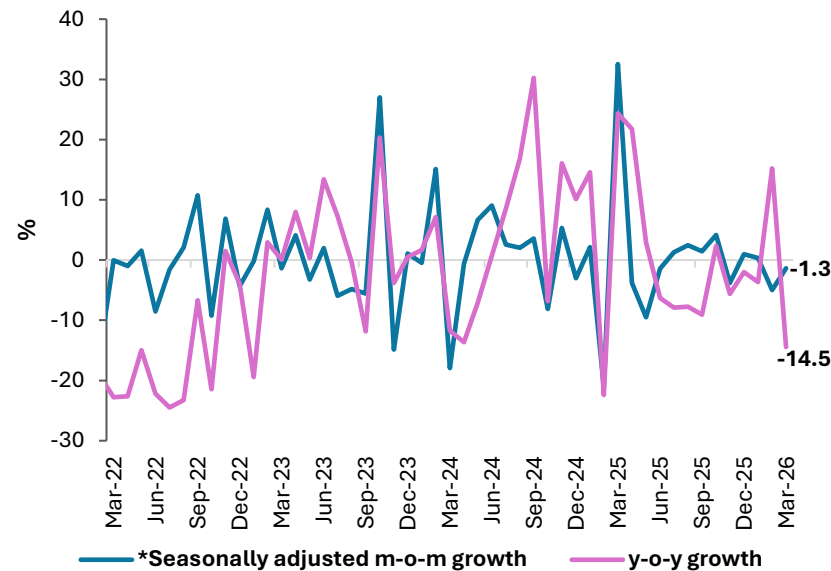
Feed Ingredients (Rs./kg)	2025 January	2025 December	2026 January
Maize	161.9	193.9	183.2
Soya bean meal	201.2	227.6	195.6
Fish meal	406.7-550.0	480.0-610.0	403.3-610.0
Rice polish	131.4	131.0	133.8

Tea

Tea Production

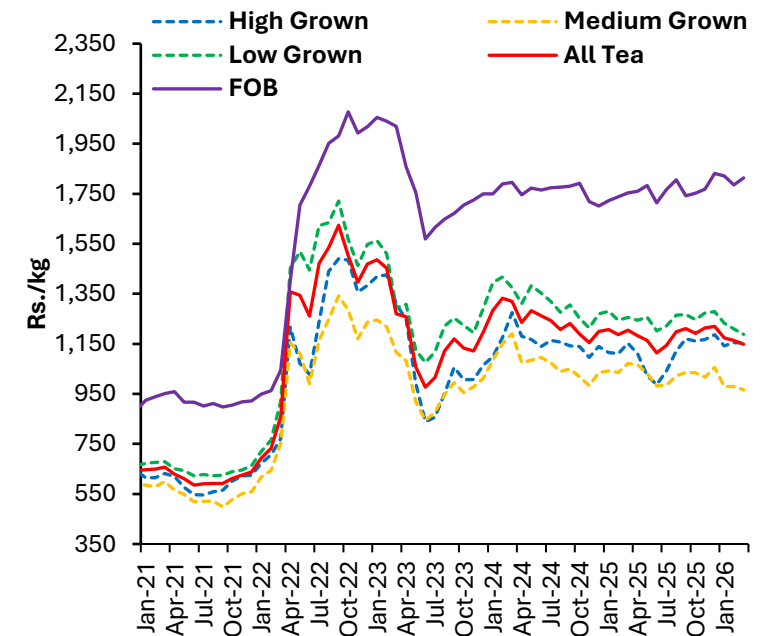


Tea Production Growth



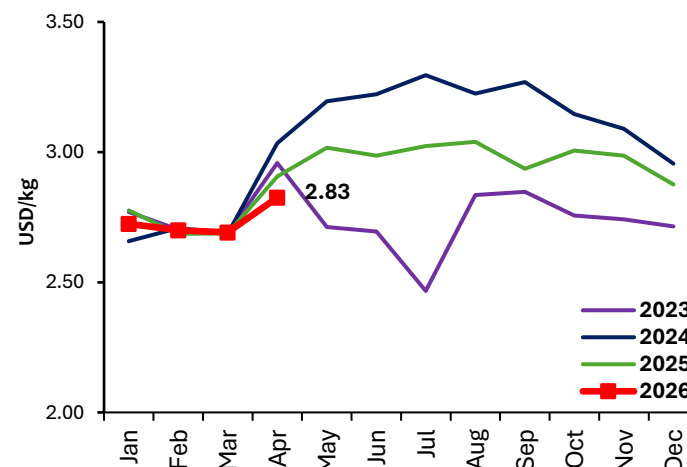
- Domestic tea production decreased by **14.5%** (y-o-y) during the month of March 2026 due to extensive dry weather conditions. Further, this marks a **1.3%** m-o-m (seasonally adjusted) contraction
- Global tea prices have increased in March 2026

Tea Auction Prices & FOB Prices



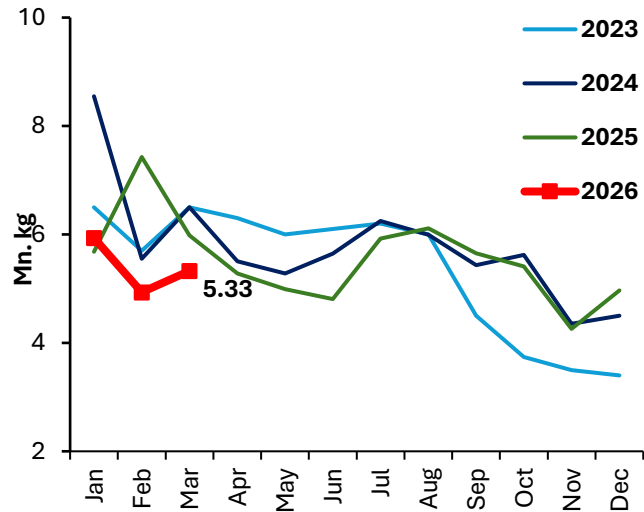
Tea Production (mn kg)	2025	2025 Jan-Mar	2026 Jan-Mar	Growth % (y-o-y)
High grown	56.2	13.8	13.4	(2.5)
Medium grown	47.7	11.0	10.1	(7.98)
Low grown	158.8	36.7	36.0	(1.9)
Total	262.8	61.5	59.6	(3.1)

International Tea Prices

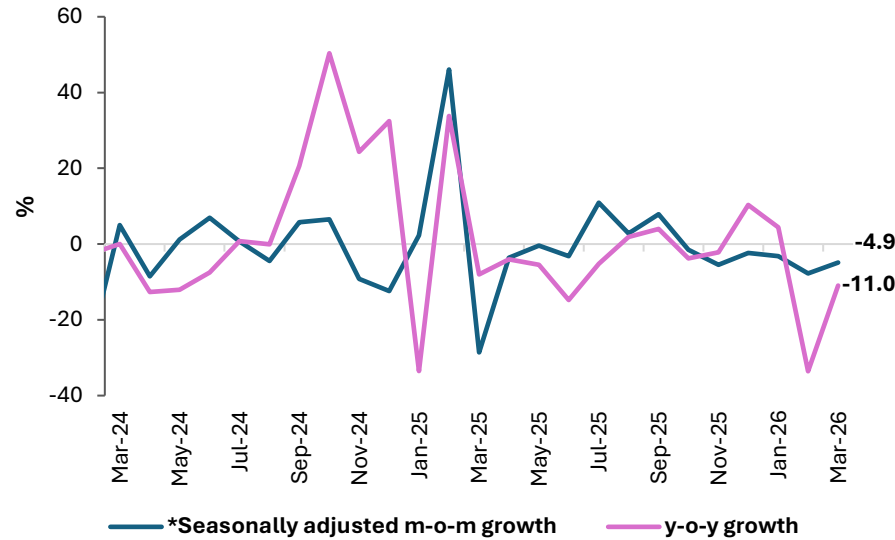


Rubber

Rubber Production



Rubber Production Growth

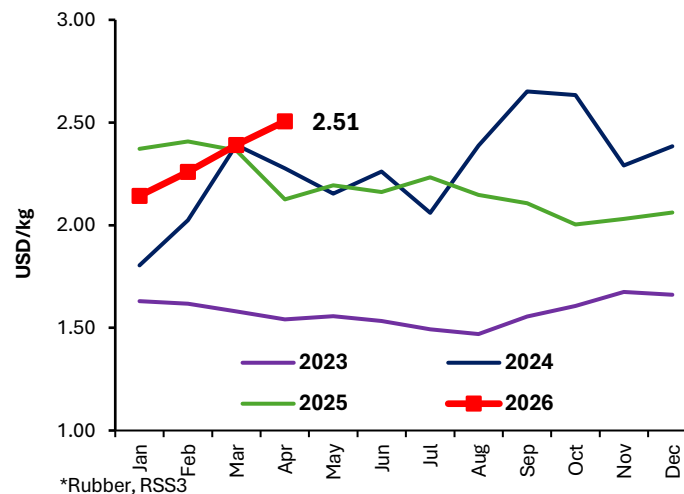


- Domestic rubber production recorded a year-on-year decline of **11.0%** in March 2026. Further, this a **4.9%** m-o-m (seasonally adjusted) decline
- Global natural rubber prices increased in March 2026 due to higher demand, as geopolitical tensions and rising crude oil prices increased the cost of synthetic rubber

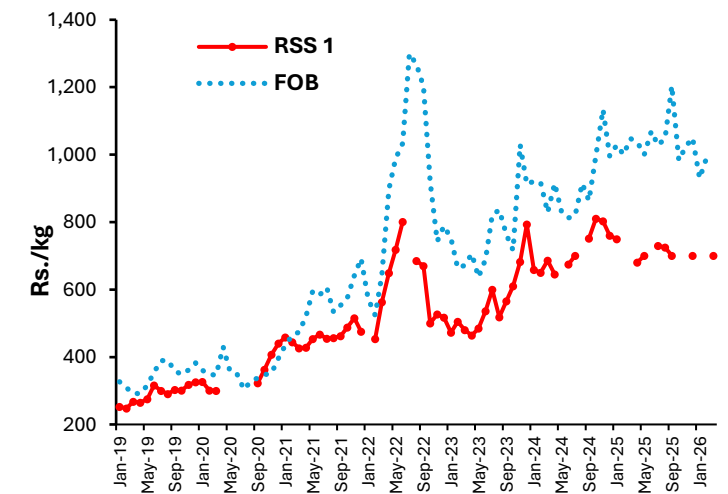
PLANTATIONS

Rubber Production (mn kg)	2025	2025 Jan-Mar	2026 Jan-Mar	Growth %
Sheet Rubber	33.0	8.6	6.9	(20.0)
Crepe Rubber	11.1	3.2	2.9	(8.0)
Other	22.4	7.3	6.4	(12.7)
Total	66.5	19.1	16.2	(15.2)

International Rubber Prices



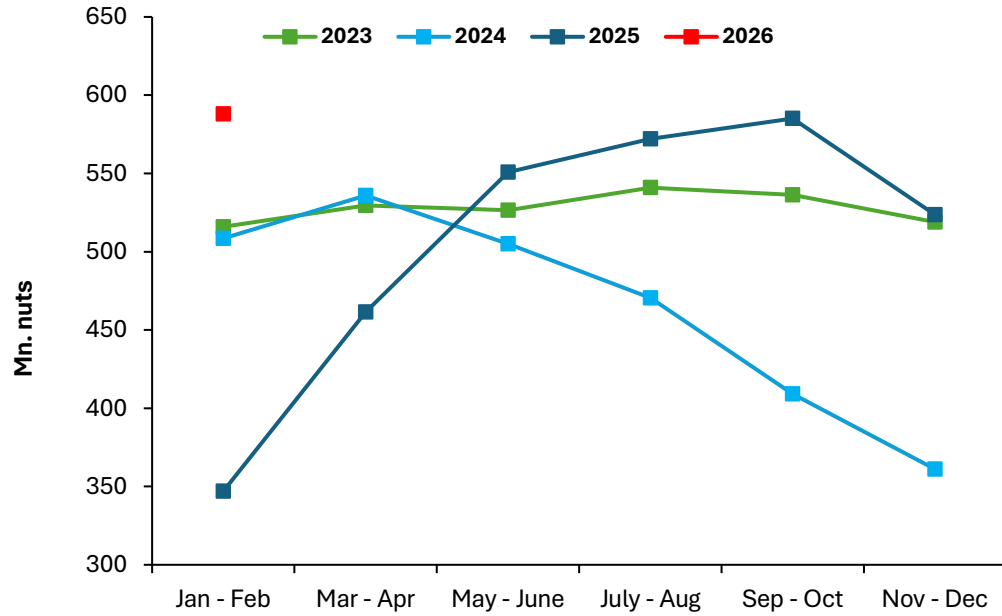
Rubber Auction Prices & FOB Prices



Sources: Rubber Development Department, Ceylon Chamber of Commerce, Sri Lanka Customs, Central Bank of Sri Lanka, World Bank
*Seasonally adjusted using X13 procedure

Coconut

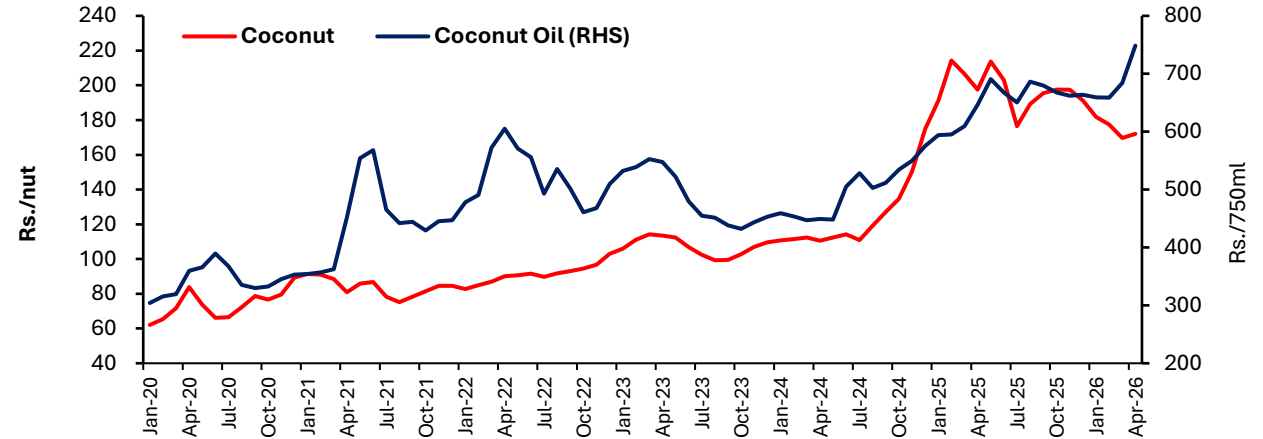
Coconut Production*



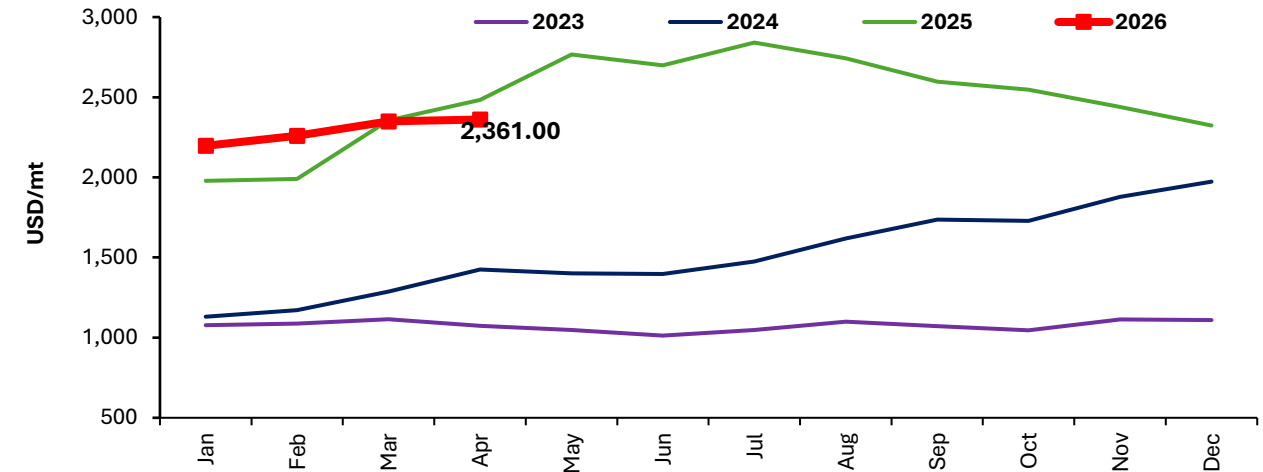
*From January 2026 onwards total nut production is based on bi-monthly data estimation of the Coconut Research Institution

Coconut Production	2025	2025 (Jan-Feb)	2026 (Jan-Feb)
Desiccated Nut (MT)	34,381	2,657	6,799
Coconut Oil (MT)	33,696	3,505	6,548
Local consumption (Nuts)	1,496	174	133

Retail Price of Coconut and Coconut Oil



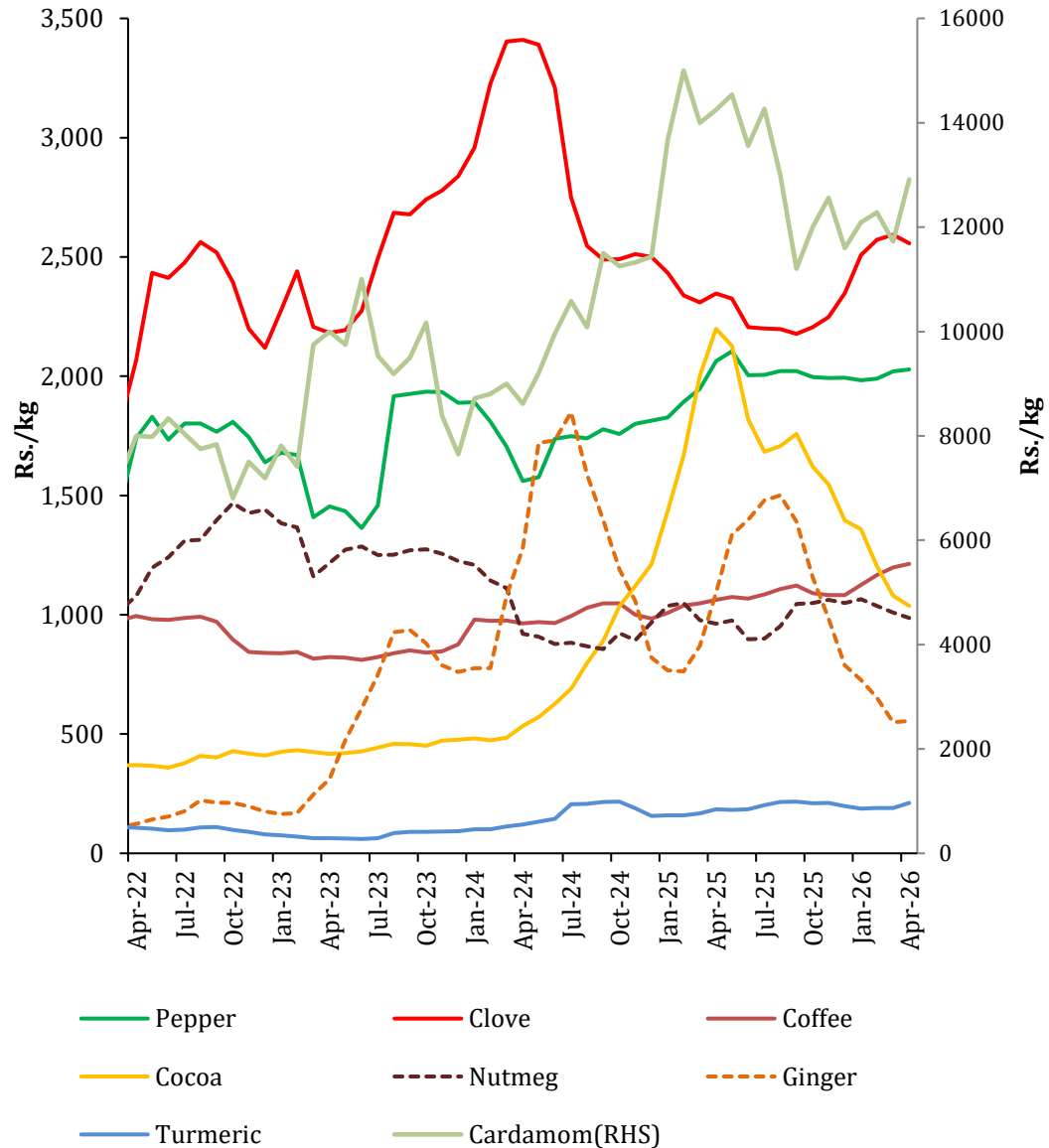
International Coconut Oil Prices



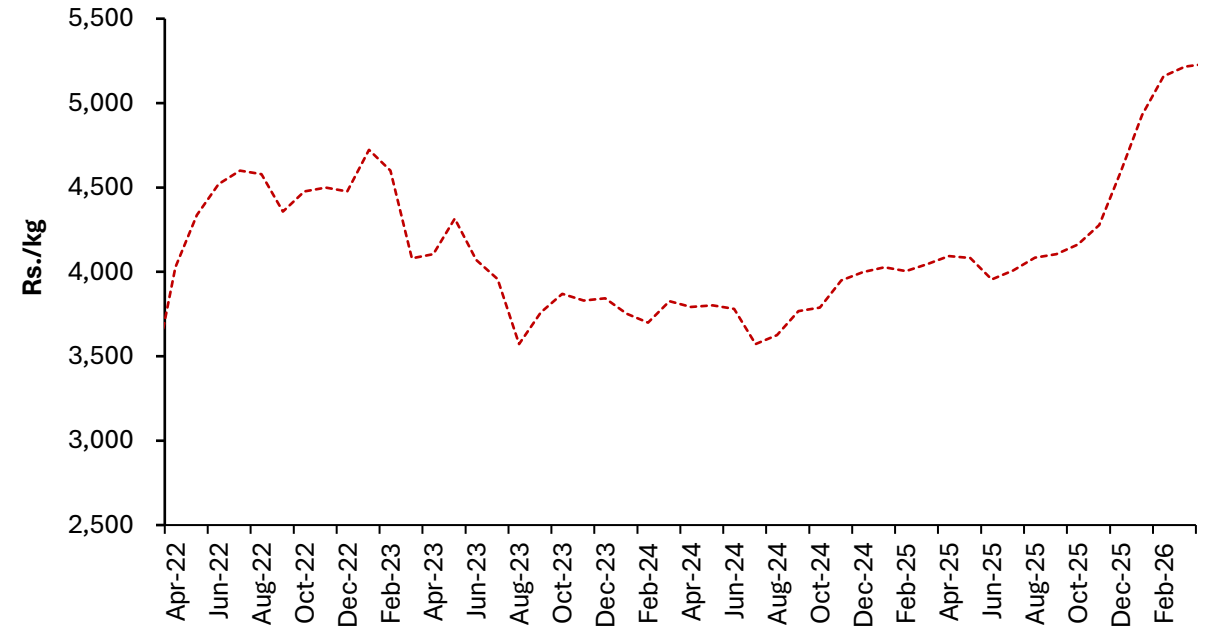
International coconut oil prices increased slightly in March 2026 compared to previous month

Other Export Agriculture

Farmgate/Producer Prices of Selected Export Agriculture Crops



Farmgate/Producer Price of Cinnamon



- **In April 2026, the market prices of export crops such as, coffee, pepper, cardamom, cinnamon, ginger, and tumeric prices have increased (m-o-m) while clove, cocoa, and nutmeg declined**
- **Earnings from exports of spices recorded a decline in March 2026 (y-o-y) mainly due to weaker performance in pepper and clove exports**

Import Trends of Agricultural Input

Imports	2024	2025	2025 Jan-Mar	2026 Jan-Mar
---------	------	------	--------------	--------------

Plants and Seeds

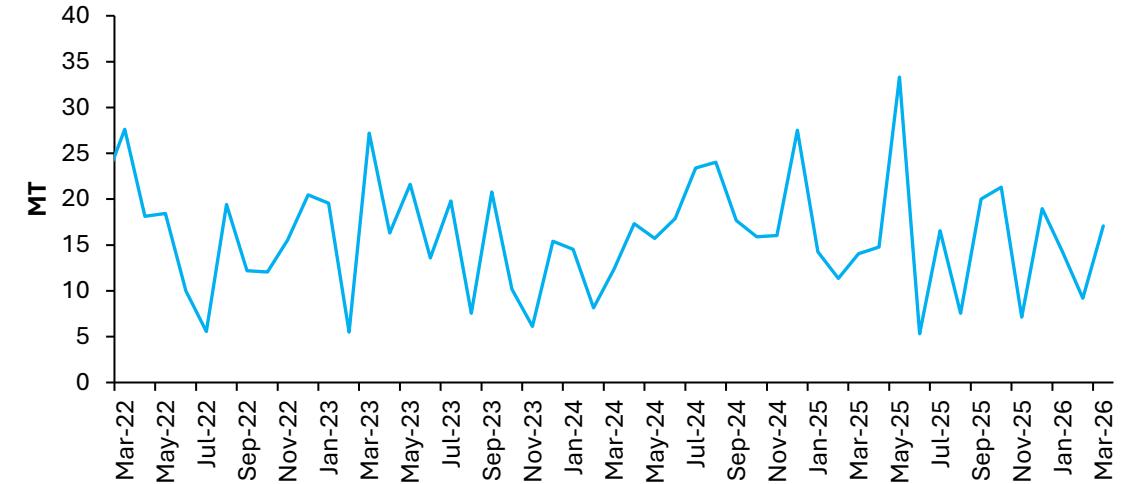
Vegetable seeds (MT)	211	185	40	41
Potato seed (MT)	773	1,002	100	-
Plants & parts (MT)	6,874	5,297	1,327	2,012
Live trees and other plants (No. '000)	1,248	972	59	103

Fertilizers (MT '000)

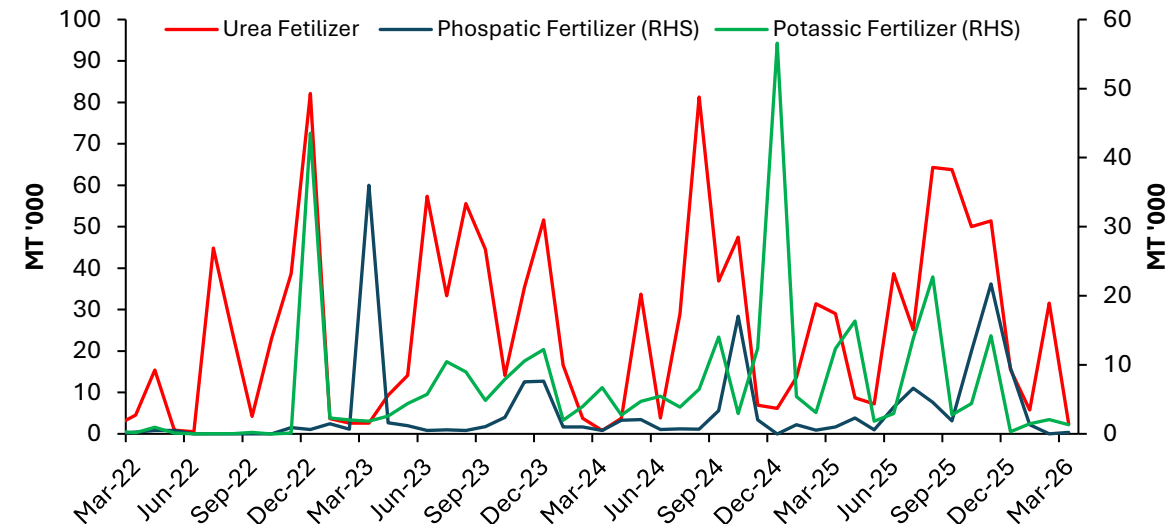
Urea	270	399	74	40
Other nitrogenous fertilizers	68	95	31	11
Phosphatic	31	66	3	2
Potassic	122	100	21	5
Other fertilizers	16	53	5	8

Import Trends of Selected Agricultural Inputs

Vegetable Seeds

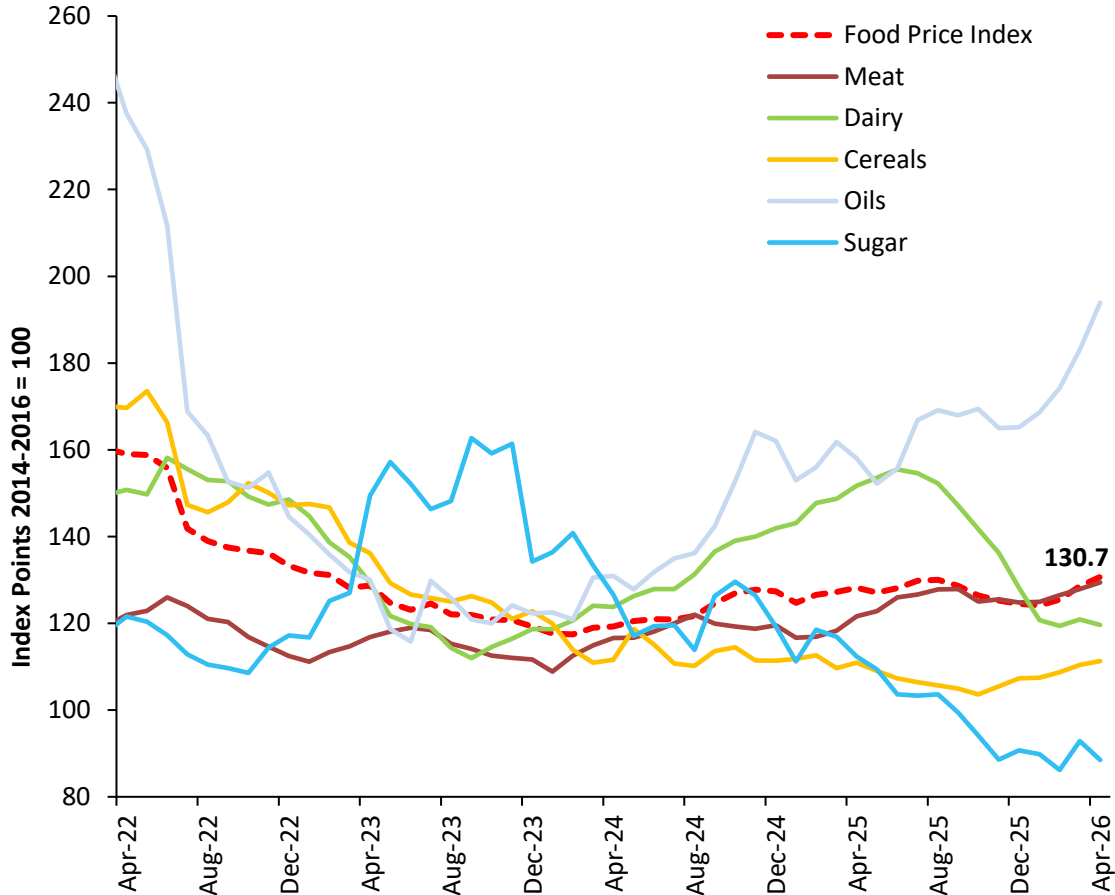


Fertilizers

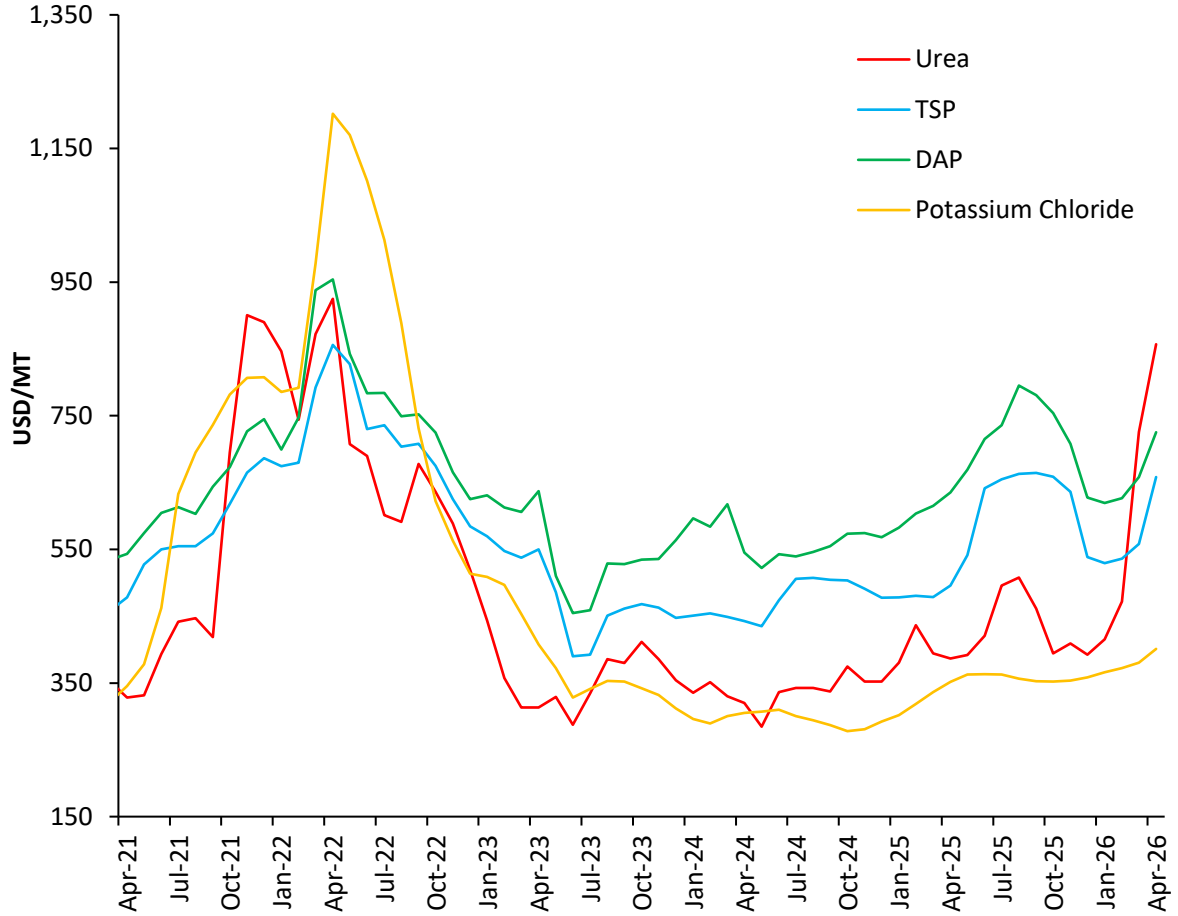


International Agricultural Commodity Prices

FAO Food Price Index



International Fertilizer Prices



In April 2026, the FAO Food Price Index increased compared to previous month, as increases in meat, cereals and vegetable oil offset declines in dairy products and sugar prices

GLOBAL



Datasets are accessible via:

<https://www.cbsl.gov.lk/en/statistics/statistical-tables/real-sector/production-indicators>



Economic Research Department
Central Bank of Sri Lanka

**The figures for 2024 and 2025 provided in this data summary are highly provisional.*