

KEY HIGHLIGHTS

May 2025

Paddy production for the 2025 Yala season, based on the sown extent as of end May 2025, is forecasted at 1.99 million metric tons, a 0.6% increase from the previous Yala season

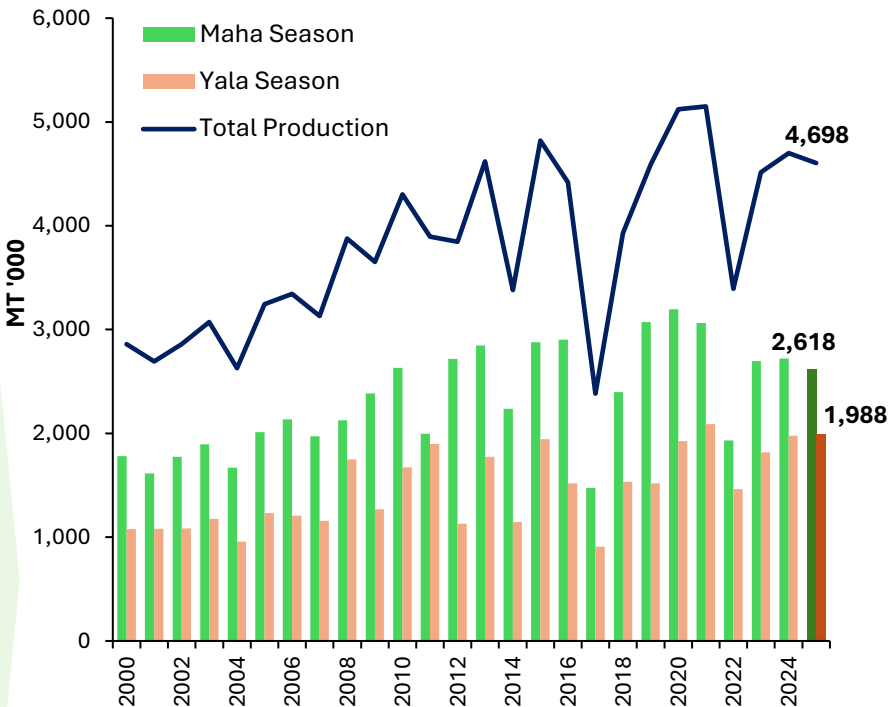
Total fish production decreased by 12.4% (y-o-y) in May 2025, attributed to decline in both marine and inland fishing activities.

Domestic Tea production increased by 2.9% (y-o-y) in May 2025 mainly attributed to favourable weather conditions, while global tea prices have increased marginally in May 2025

Domestic coconut production declined by 1.2% (y-o-y) in May 2025. Despite this decline, the upward trend observed since February 2025 indicates a gradual recovery in production.



Paddy Production

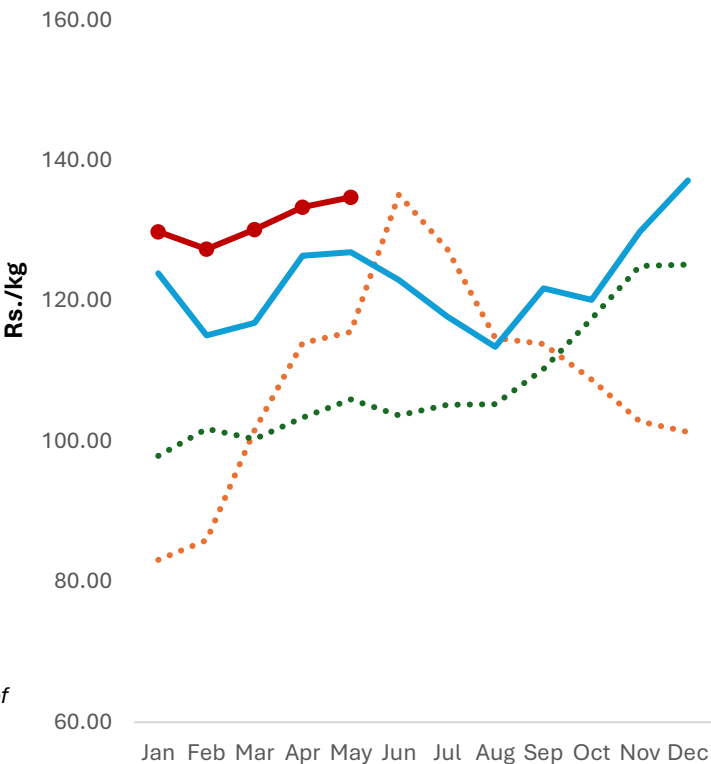


*2024/2025 Maha season and 2025 Yala season production is based on the Department of Agriculture forecast

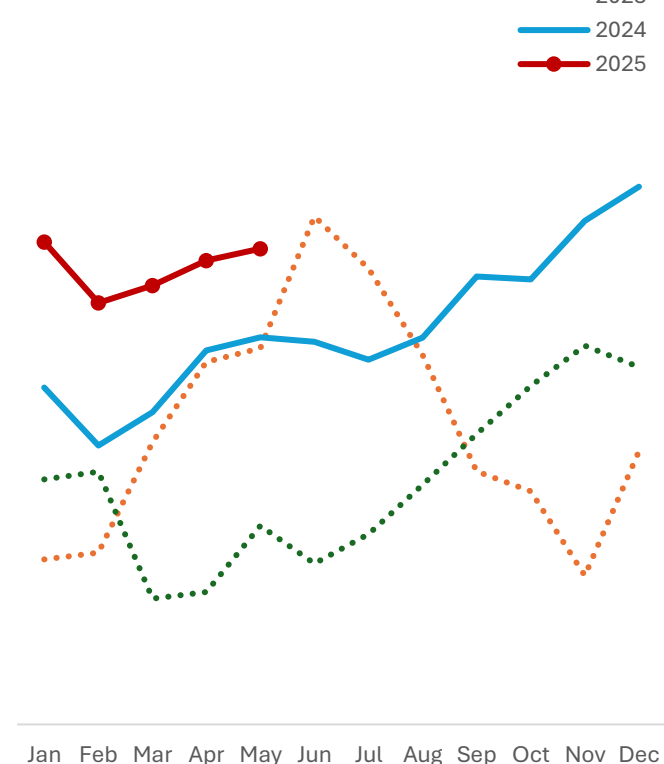
Season	2023 (mn mt)	2024 (mn mt)	Growth (%)
Maha	2.70	2.72	1.0
Yala	1.82	1.98	8.8
Annual	4.51	4.70	4.1

Farmgate/Producer Prices of Paddy

Samba

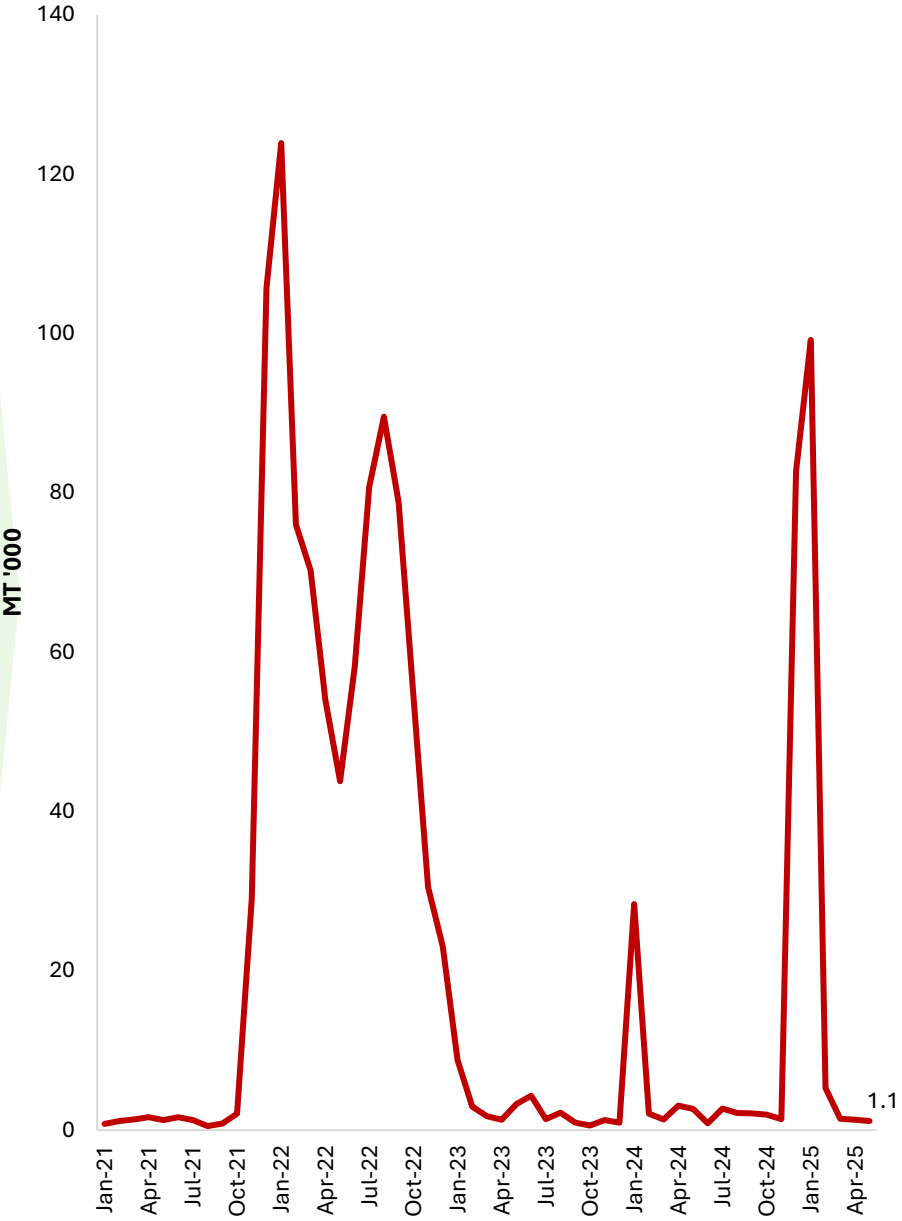


Nadu



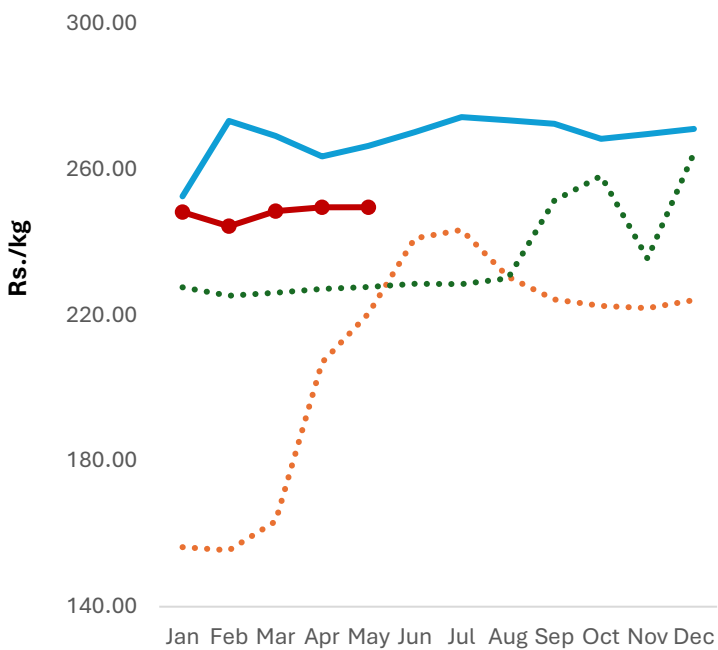
- Paddy production forecast of the Department of Agriculture for 2025 Yala season, based on the sown extent reported as of end May 2025, stands at **1.99 million metric tons (0.6% increase from the previous Yala season).**
- Accordingly, paddy production forecasts for 2025 is estimated as **4.6 million metric tons (2.0% decrease from the previous year)**

Rice Imports

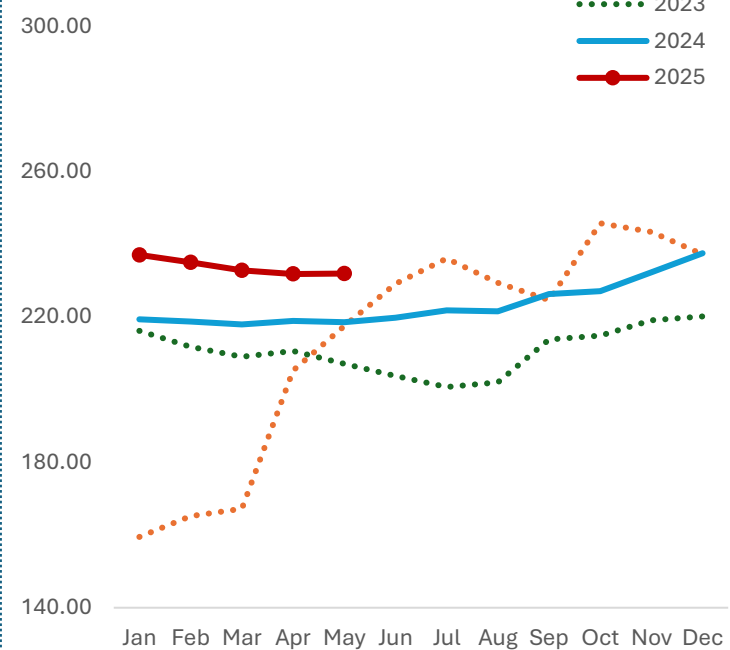


Retail Rice Prices

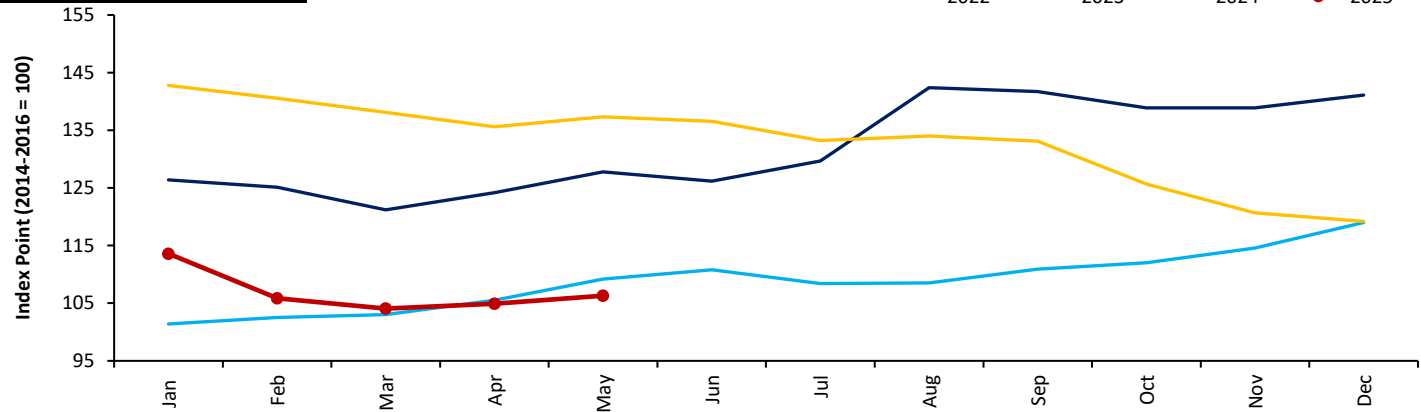
Samba



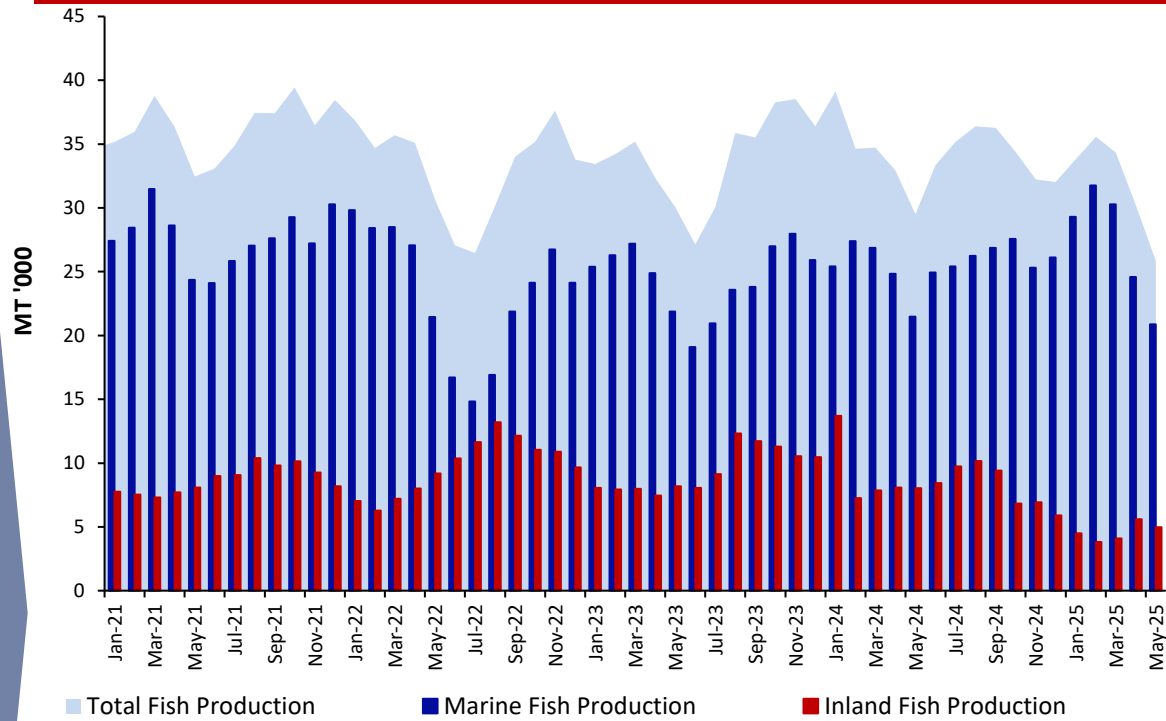
Nadu



FAO All Rice Price Index

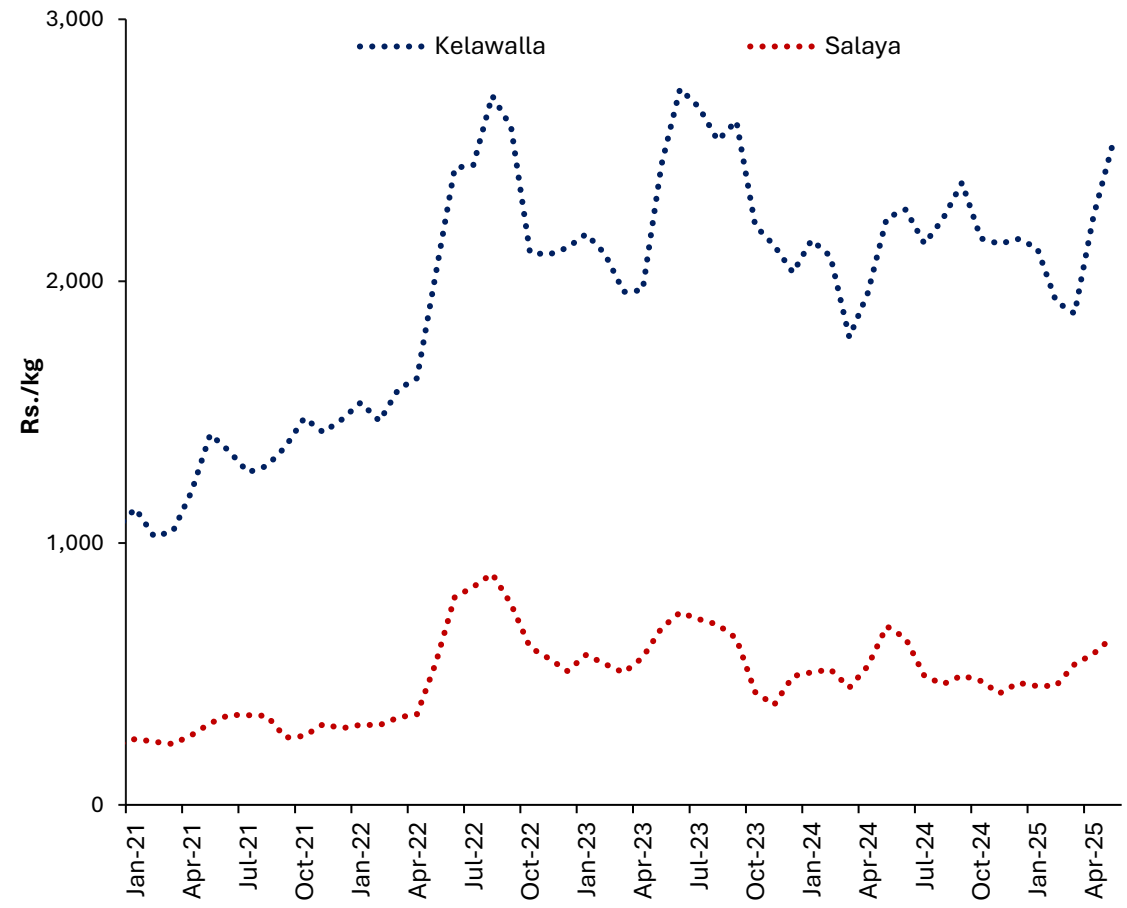


Fish Production



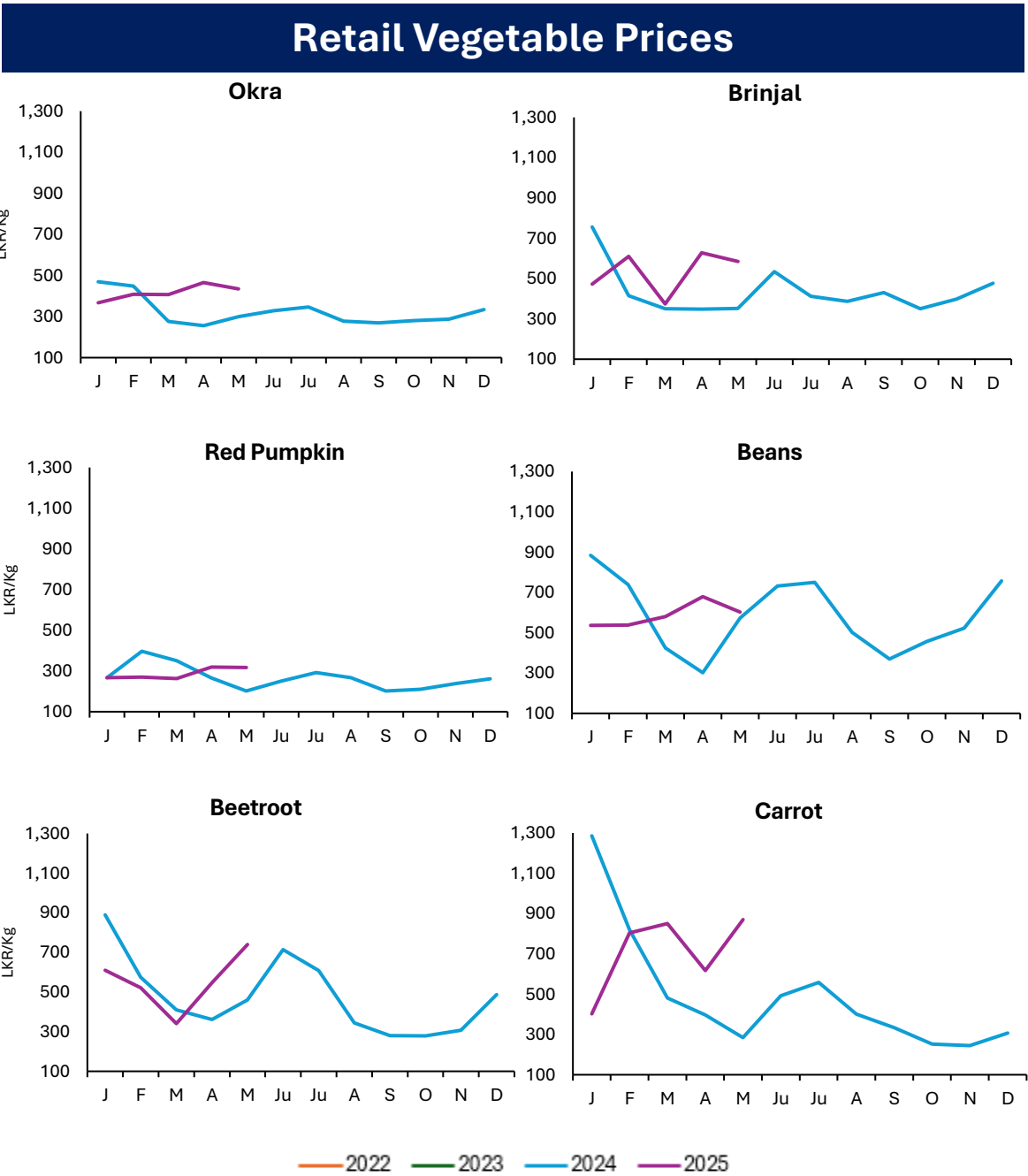
Production (MT '000)	2023	2024	2024 Jan-May	2025 Jan-May
Marine	294	308	126	137
Inland	113	102	45	23
Total	407	411	171	160

Retail Fish Prices



Fish production decreased by **12.4%** (y-o-y) in May 2025, attributed to 2.8% (y-o-y) decline in marine fishing activities and 38.1% (y-o-y) decline in inland fishing activities.

Vegetable Production (MT)						
	22/23 Maha	2023 Yala	23/24 Maha	2024 Yala	24/25 Maha*	24/25 Maha Y-o-Y Change
Up Country						
Tomatoes	46,244	34,169	39,293	34,945	41,551	↑
Cabbage	52,310	47,773	58,552	48,242	55,110	↓
Carrot	40,084	25,267	48,836	24,374	44,410	↓
Beetroot	17,178	21,444	17,332	20,034	21,520	↑
Raddish	26,955	27,557	40,159	27,567	37,249	↓
Beans	41,139	25,287	36,345	26,128	49,810	↑
Low Country						
Luffa	24,852	18,417	22,225	18,521	15,276	↓
Okra	38,984	31,351	37,620	35,003	33,326	↓
Brinjal	80,637	54,450	69,584	54,660	57,486	↓
Cucumber	21,013	26,603	17,937	27,161	15,630	↓
Red pumpkin	59,163	41,779	46,890	42,565	43,593	↓
Ash plantain	35,369	22,833	33,783	24,477	4,832	↓
Long bean	35,395	27,456	35,539	28,855	36,463	↓



*2024/2025 Maha season production is based on the Department of Agriculture forecast

Other Field Crops

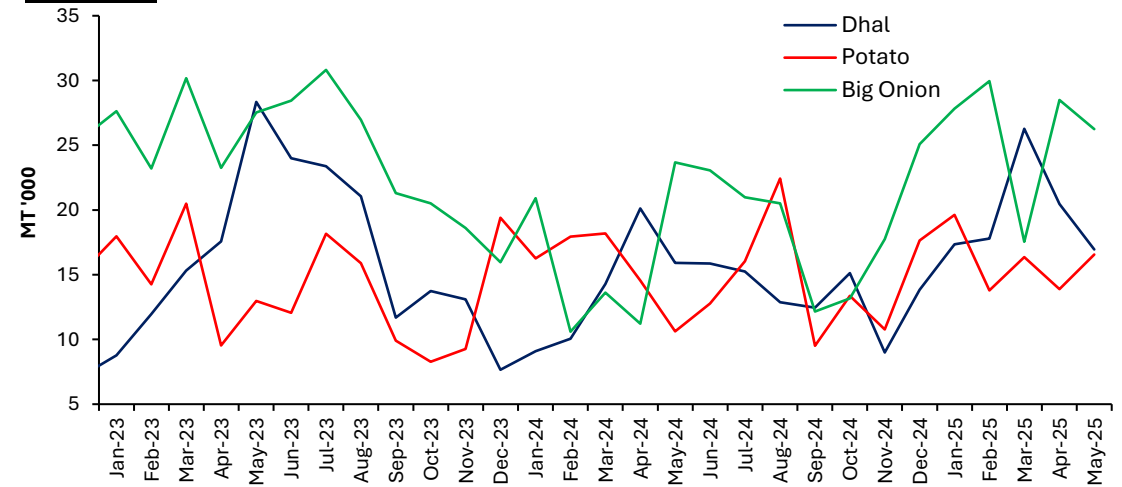
Production (MT)	2022/23 Maha	2023 Yala	2023/24 Maha	2024 Yala	2024/25 Maha*	24/25 Maha Y-o-Y Change
Potato	19,723	21,026	21,291	20,916	25,510	↑
Red Onion	26,673	22,678	24,762	19,749	29,409	↑
Big Onion	329	4,755	257	8,572	281	↑
Green Chillie	42,270	25,128	40,438	26,200	68,997	↑
Cowpea	7,022	5,779	5,955	5,458	7,269	↑
Black gram	8,346	1,437	8,518	1,828	12,270	↑
Maize	198,601	22,647	196,871	26,626	341,595	↑
Ground Nut	19,014	10,666	17,336	11,626	17,460	↑
Gingelly	2,701	8,651	2,210	8,293	1,655	↓
Green gram	6,940	5,514	6,156	8,909	6,473	↑

*2024/20245 Maha season production is based on the Department of Agriculture forecast

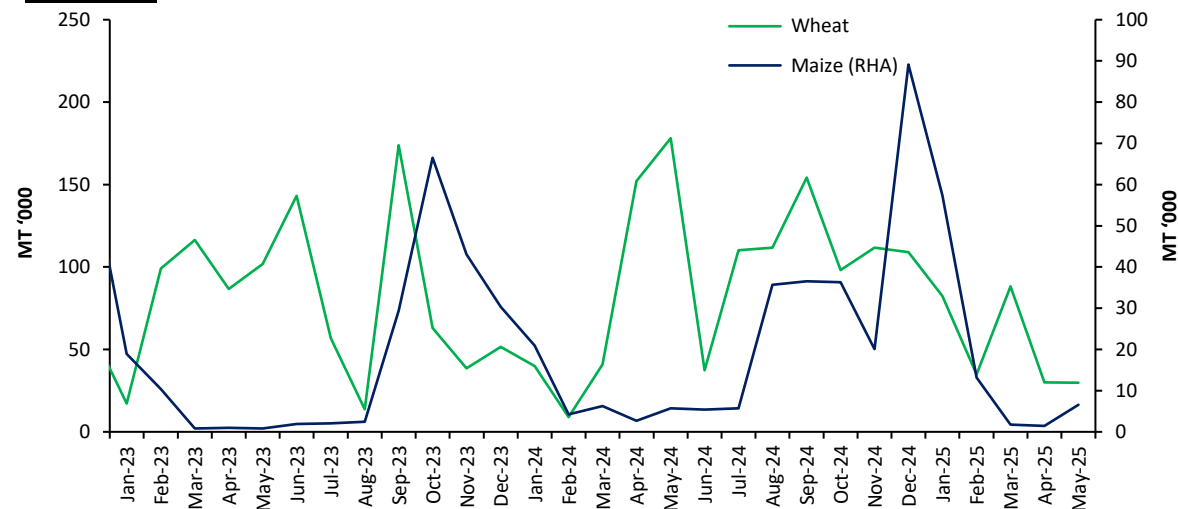
Imports (MT)	2023	2024	2024 Jan-May	2025 Jan-May
Dhal	196,601	163,881	69,460	98,804
Potato	168,184	180,121	77,577	80,213
Big Onion	294,386	212,720	80,012	130,025

Import Trend of Selected Food Items

MT '000

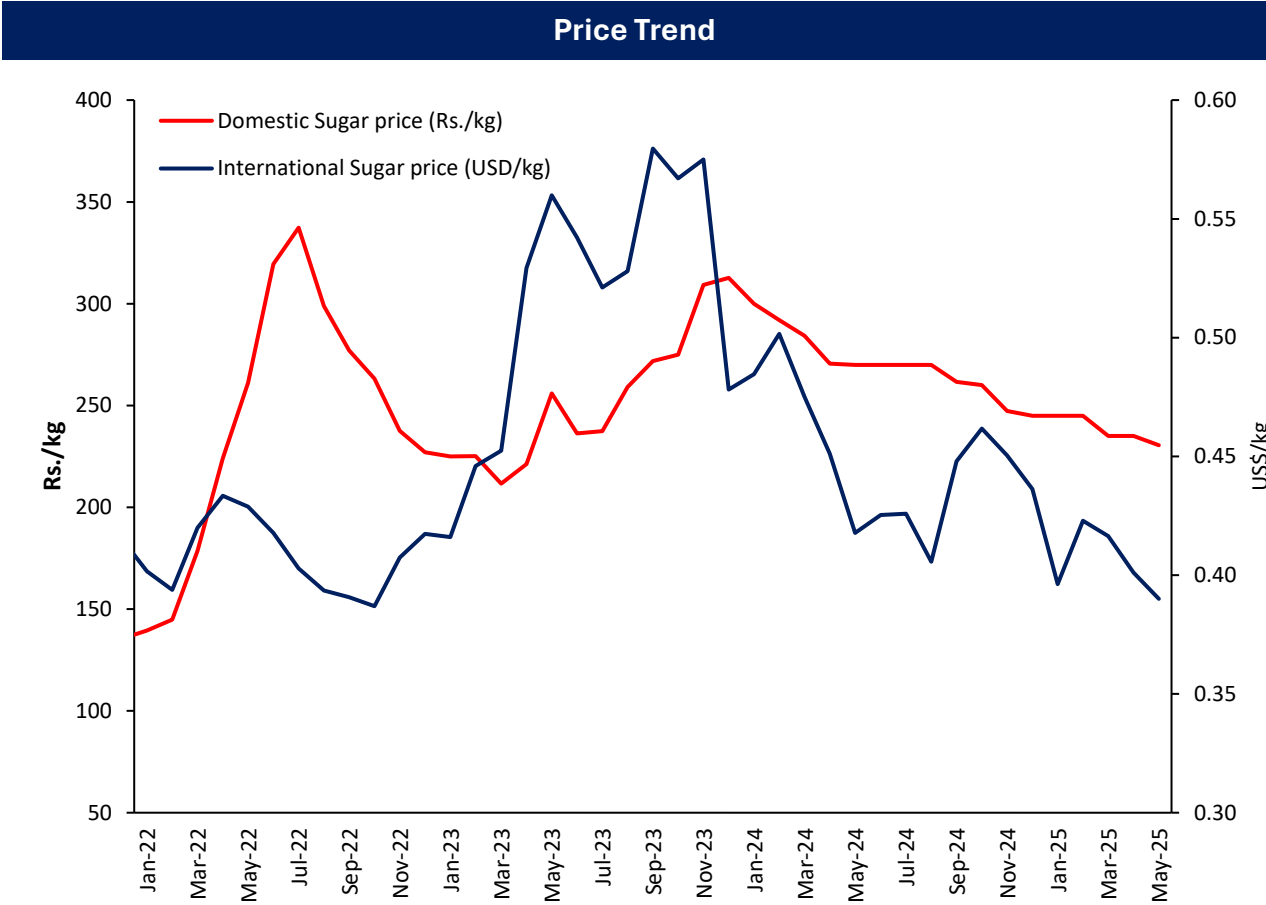
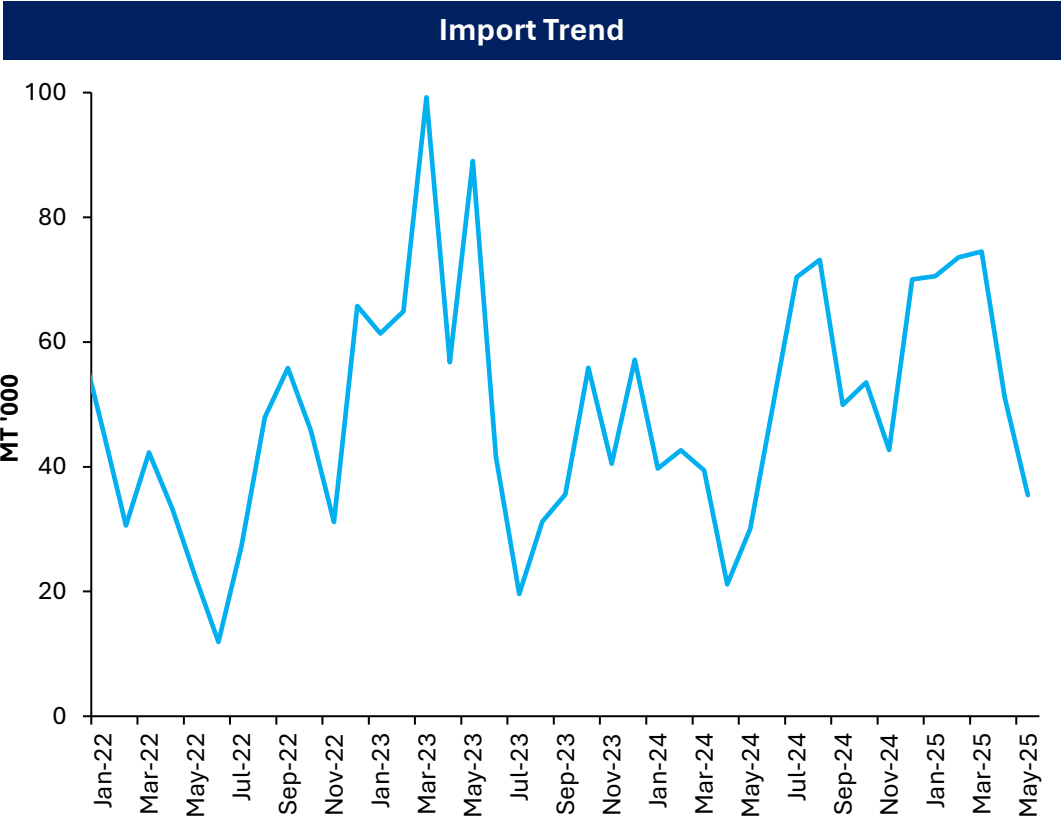


MT '000



Sugar

	2024 Jan-May	2025 Jan-May
Sugar Production (MT)	31,688	26,258
Sugar Imports (MT)	172,987	305,229



• International sugar prices declined in May 2025 for the third consecutive month, mainly due to weaker global demand for sugar, amid concerns over the uncertain global economic outlook and its potential impact on demand from the beverage and food processing industries.

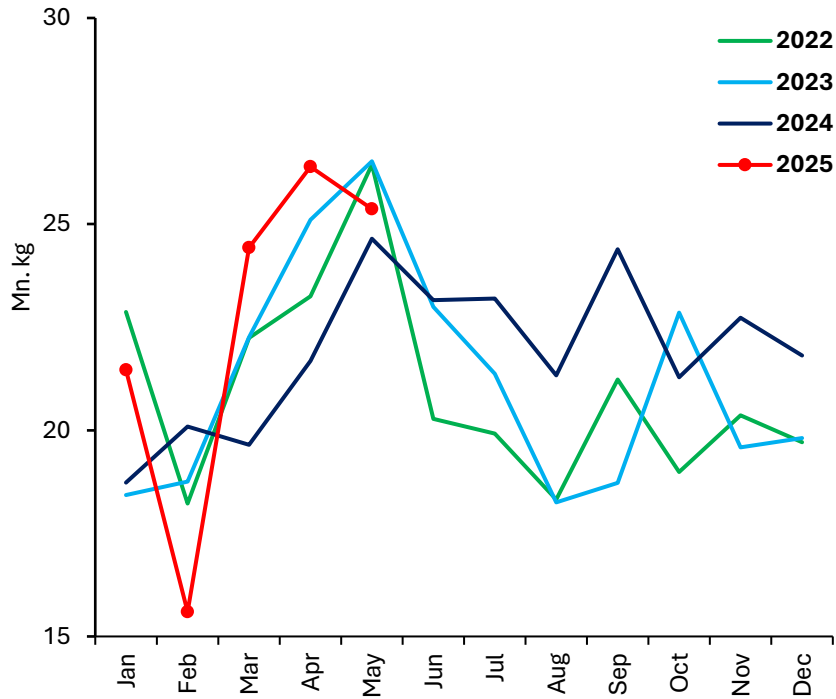
Livestock

		2024 Mar	2025 Feb	2025 Mar
Production	Egg (mn)	216	314	312
	Chicken (000 MT)	20	24	25
Price	Egg-White (Rs./egg)	47.8	31.3	30.5
	Egg - Red (Rs./egg)	55.1	33.4	32.2
	Chicken (Rs./kg)	1,243.2	1,079.2	1,121.0
Cost of Production	Egg (Rs./egg)	30.5-34.6	31.3-34.3	30.8-34.0
	Chicken (Rs./kg)	785.0	755.6	722.1

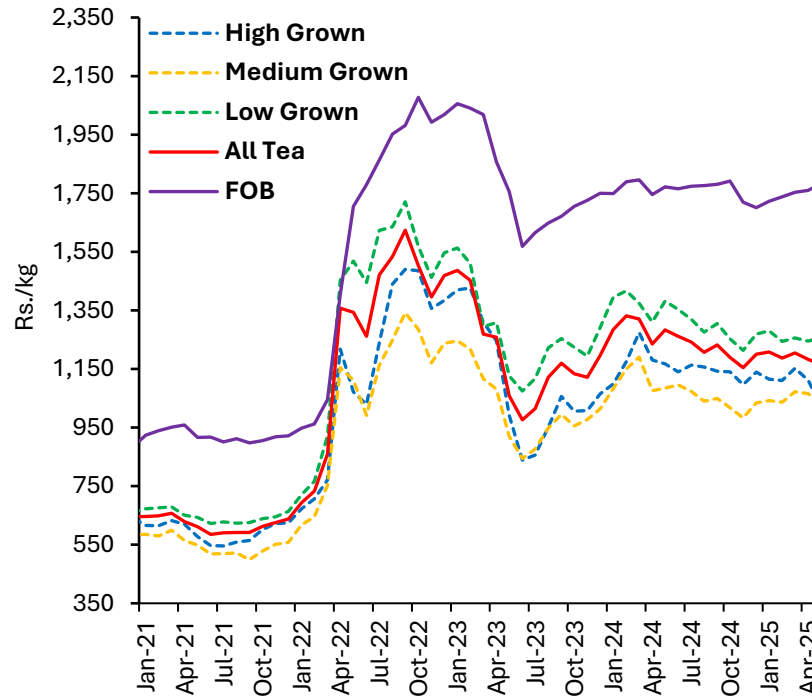
Feed Ingredients (Rs./kg)	2024 Mar	2025 Feb	2025 Mar
Maize	163.1	158.5	161.9
Soya bean meal	258.9	202.6	201.2
Fish meal	343.8	420.0-550.0	406.7-550.0
Rice polish	94.5	137.4	131.4

Tea

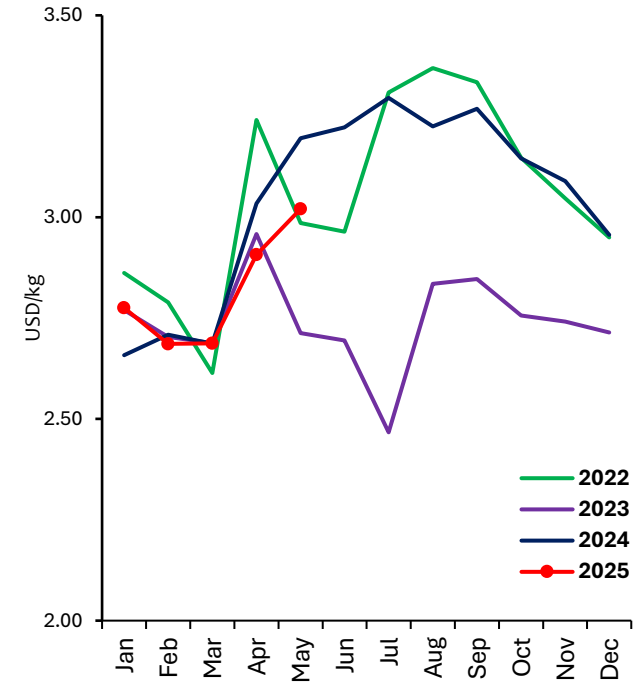
Tea Production



Tea Auction Prices & FOB Prices



International Tea Prices



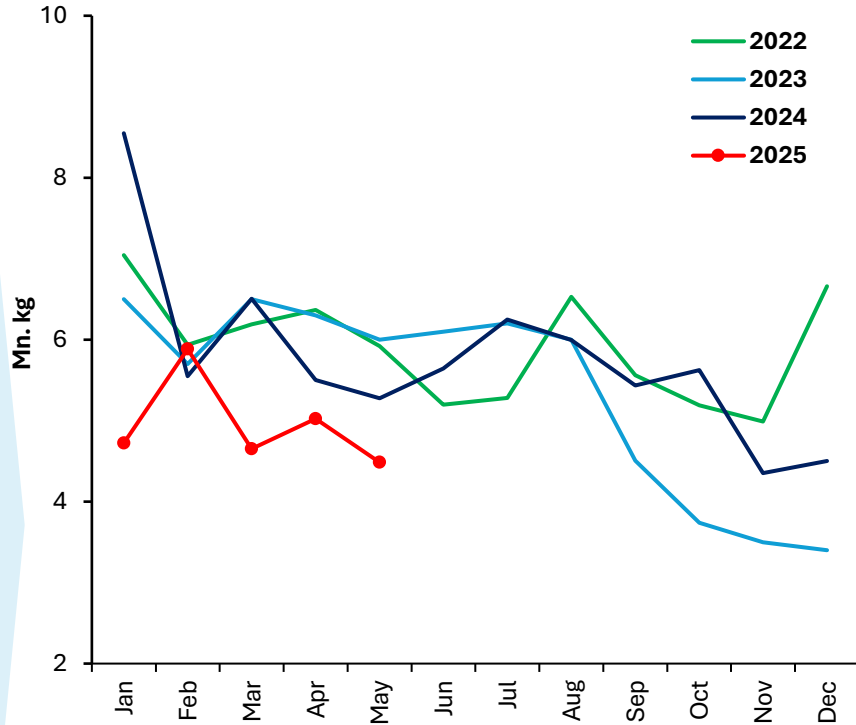
*Average Auction Price of Colombo, Kolkata & Mombasa

Tea Production (mn kg)	2024	2024 Jan-May	2025 Jan-May	Growth %
High grown	55.7	23.0	26.1	13.6
Medium grown	47.4	18.9	21.5	13.5
Low grown	159.6	62.9	65.7	4.4
Total	262.7	104.8	113.2	8.1

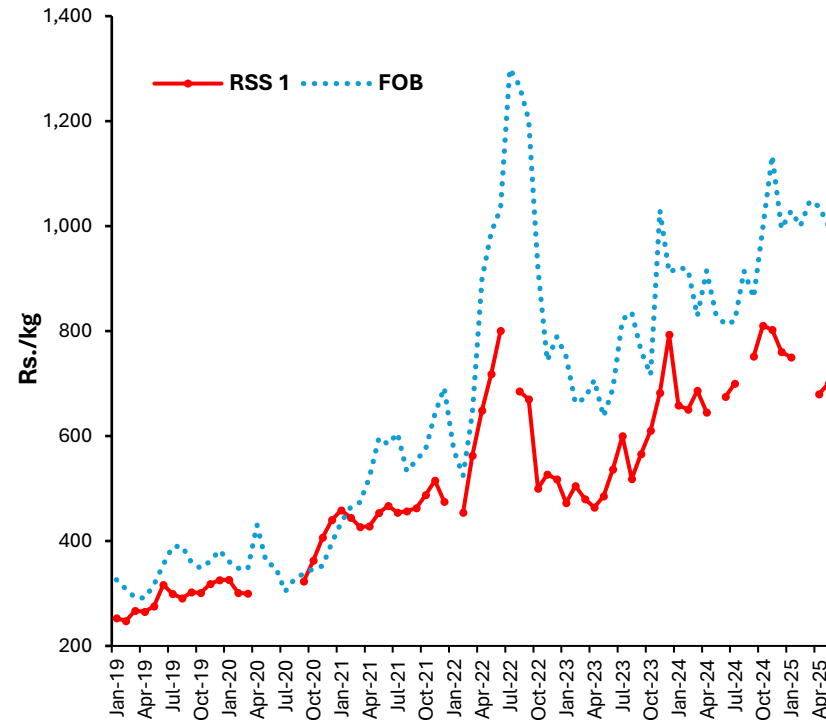
- Domestic tea production increased by **2.9% (y-o-y)** during the month of May 2025, mainly attributed to favourable weather conditions.
- Global tea prices increased marginally in May 2025 compared to the previous month, with Kolkata recording a notable rise in average prices, while Mombasa and Colombo recorded marginal declines.

Rubber

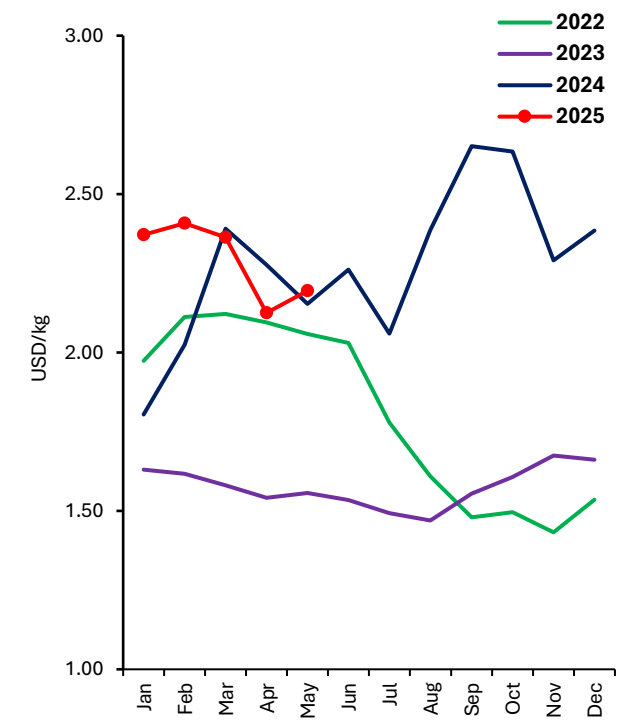
Rubber Production



Rubber Auction Prices & FOB Prices



International Rubber Prices



*Rubber, RSS3

Rubber Production (mn kg)	2024	2024 Jan-May	2025 * Jan-May	Growth %
Sheet Rubber	33.5	13.8	11.8	(14.6)
Crepe Rubber	10.1	4.6	4.5	(2.3)
Other	25.6	12.9	8.4	(34.7)
Total	69.2	31.4	24.8	(21.1)

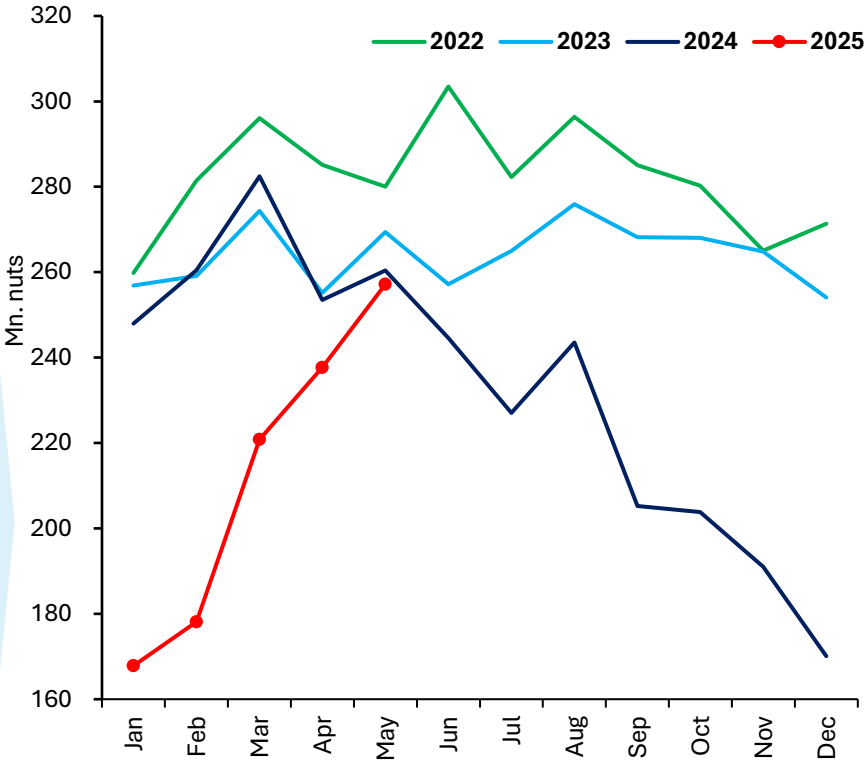
- Domestic rubber production saw a year-on-year decline in May 2025, according to highly provisional data from the Rubber Development Department.
- Natural rubber prices in global markets increased marginally in May 2025 mainly due to increased global demand and concerns over supply chain disruptions.

*Highly provisional data from RDD due to delays in data submissions from rubber production companies

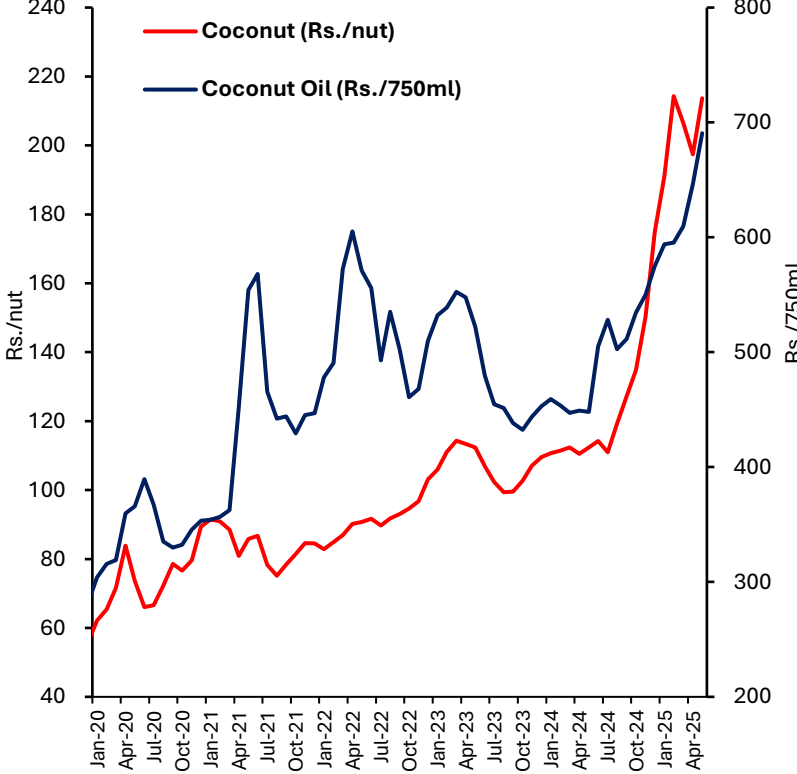
Sources: Rubber Development Department, Ceylon Chamber of Commerce, Sri Lanka Customs, Central Bank of Sri Lanka, World Bank

Coconut

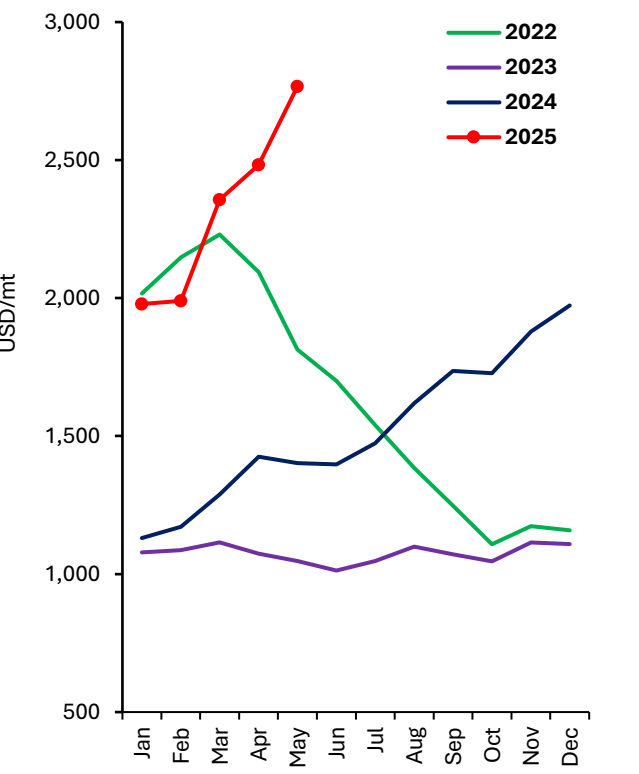
Coconut Production



Retail Price of Coconut and Coconut Oil



International Coconut Oil Prices



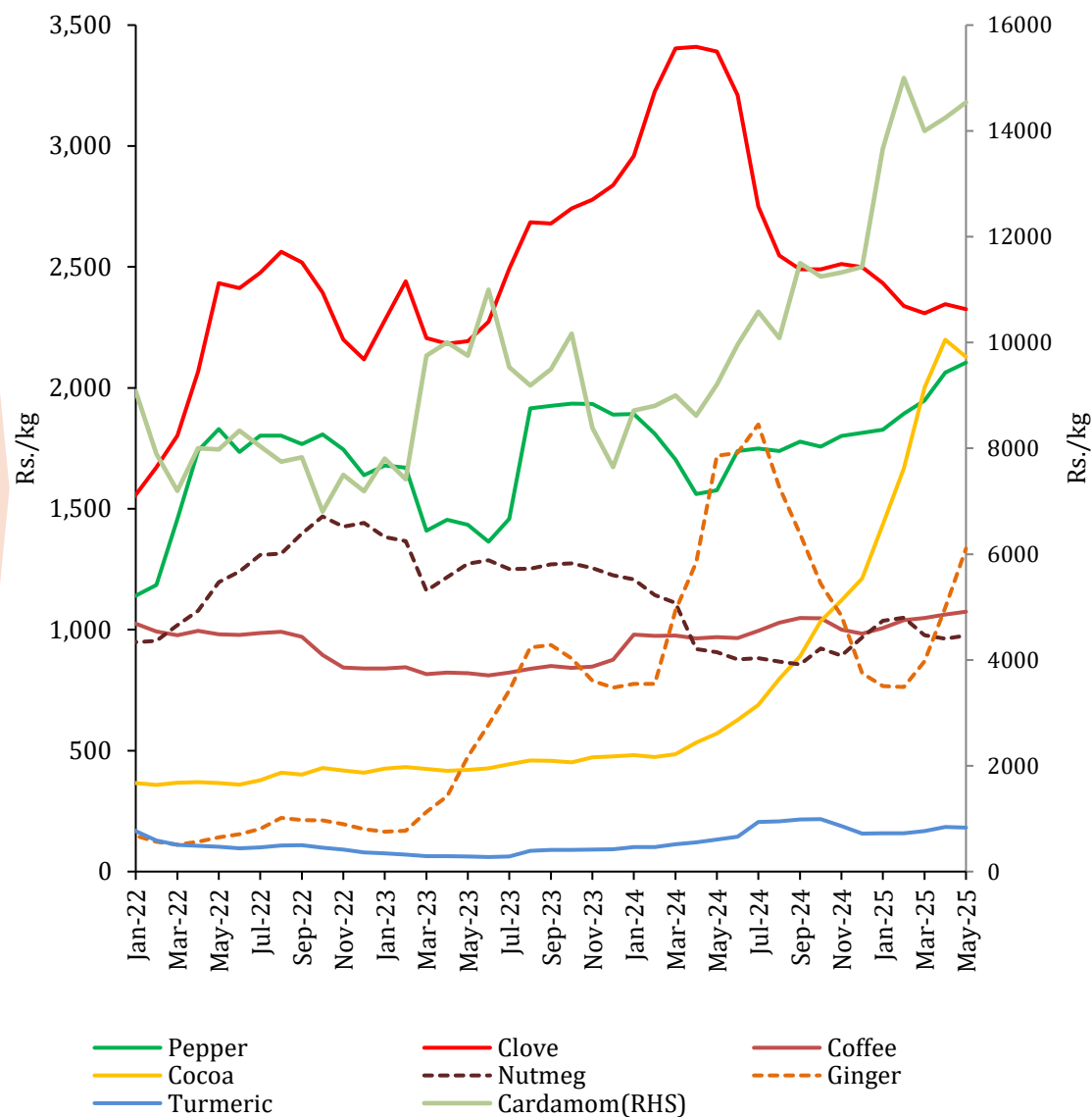
Coconut Production	2024	2024 Jan-May	2025 Jan-May	Growth %
Coconut (mn nuts)	2,790	1,305	1,062	(18.6)
Desiccated Nut (MT)	33,177	12,569	8,055	(35.9)
Coconut Oil (MT)	30,842	13,009	12,994	(0.1)

Despite a **1.2%** y-o-y decline in domestic coconut production in May 2025, the upward trend observed since February 2025 indicates a gradual recovery in output.

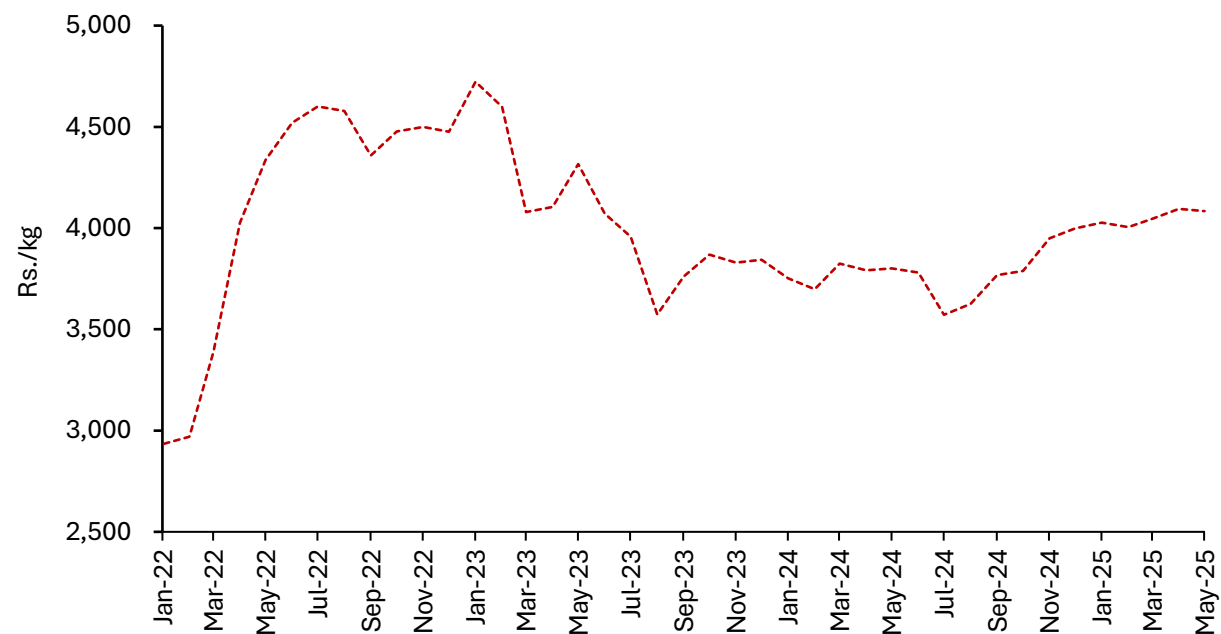
International coconut oil prices have increased notably since February 2025, mainly due to supply shortages caused by adverse weather in major producing countries and rising global demand from the food and cosmetics industries

Other Export Agriculture

Farmgate/Producer Prices of Selected Export Agriculture Crops



Farmgate/Producer Price of Cinnamon



- In May 2025, the market prices of export crops — Pepper, Coffee, Cardamom, Nutmeg and Ginger— increased, while prices of Cinnamon, Clove, Cocoa, and Turmeric registered a decline.
- Earnings from exports of spices increased in the month of May 2025 (y-o-y), mainly due to the strong performance in exports of Pepper, Cinnamon and Cloves.

Agricultural Input Import Trends

Imports	2023	2024	2024 Jan-May	2025 Jan-May
---------	------	------	-----------------	-----------------

Plants and Seeds

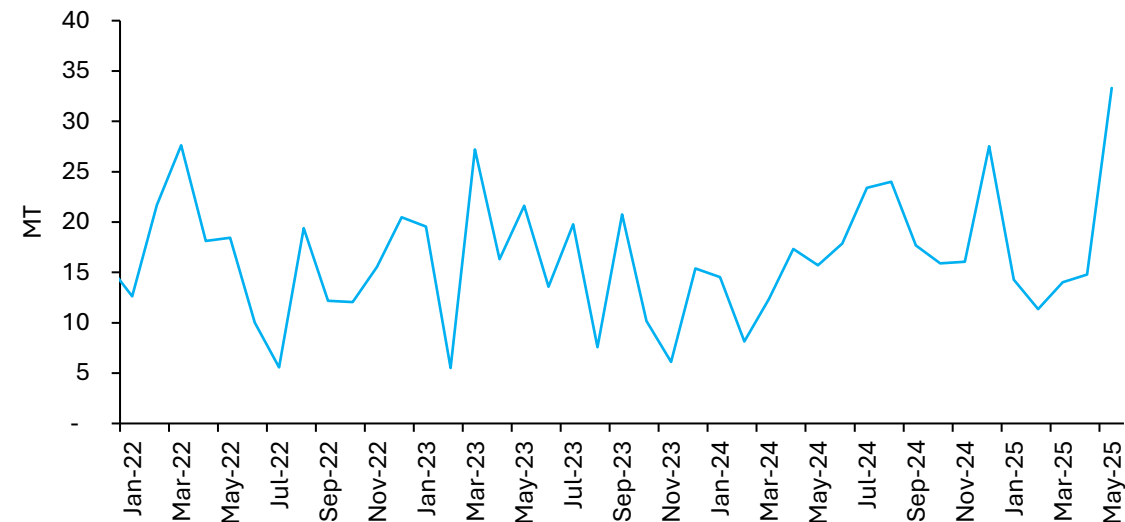
Vegetable seeds (MT)	184	211	68	88
Potato seed (MT)	797	773	125	100
Plants & parts (MT)	4,236	6,874	2,626	2,094
Live trees and other plants (No. '000)	1,039	1,248	635	305

Fertilizers (MT '000)

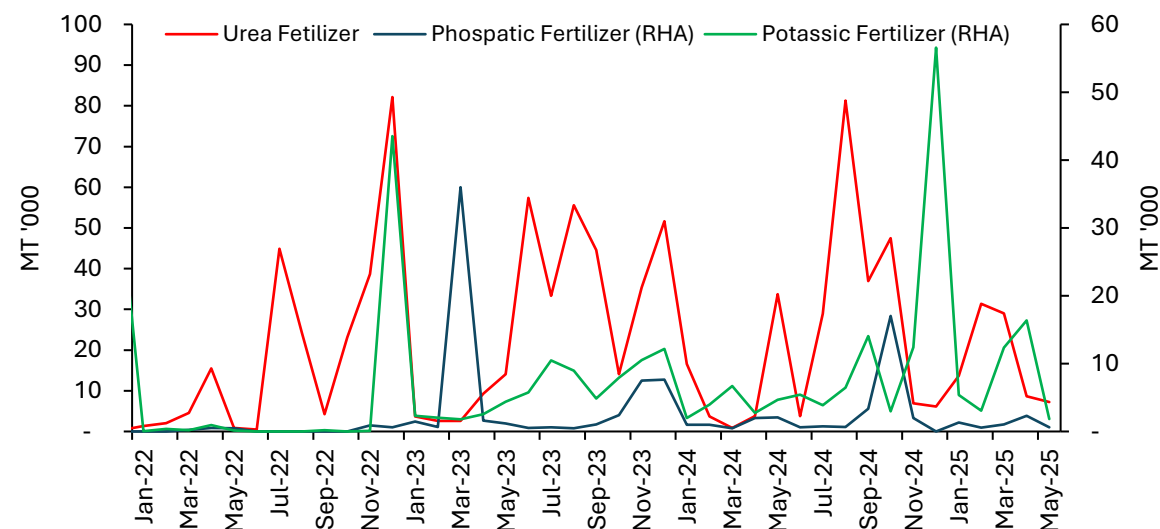
Urea	324	270	59	90
Other nitrogenous fertilizers	65	68	18	38
Phosphatic	61	31	7	6
Potassic	74	122	20	39
Other fertilizers	19	16	4	8

Import Trend of Selected Agricultural Inputs

Vegetable Seeds

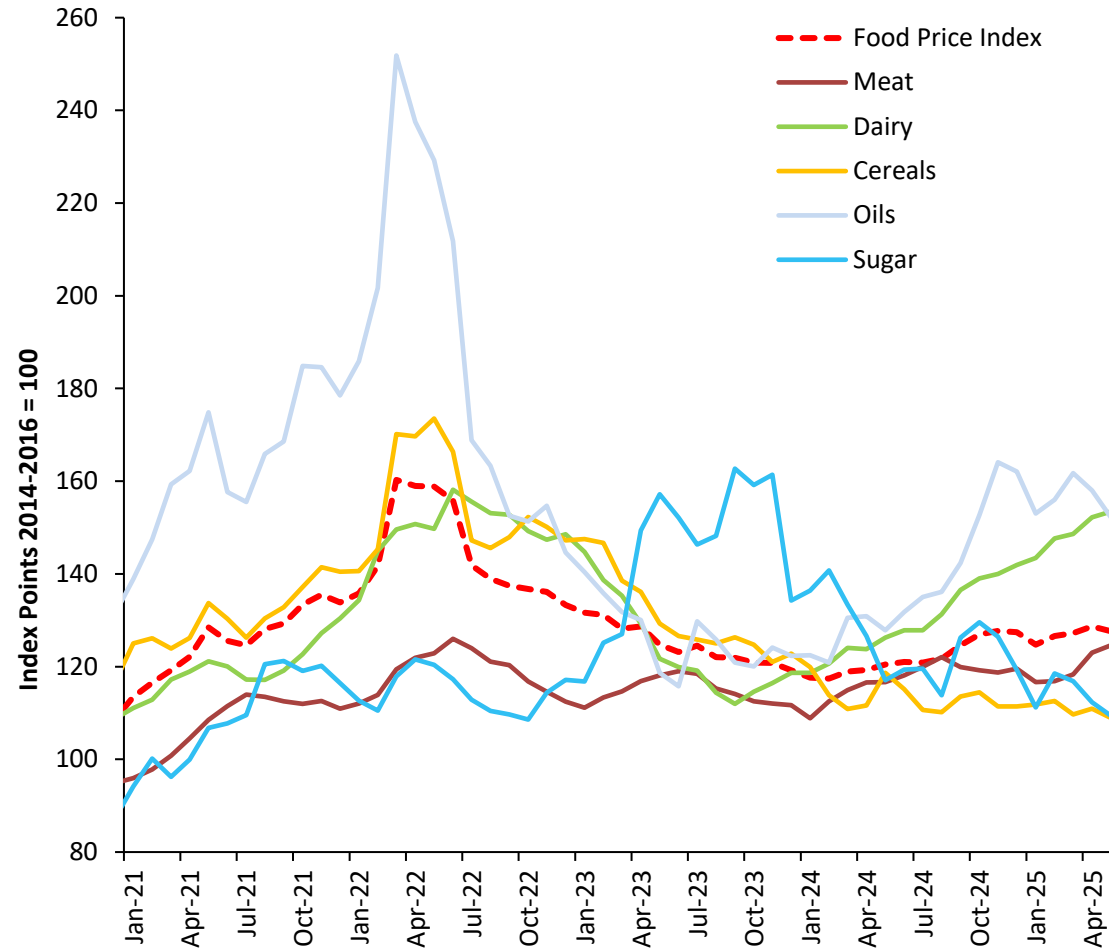


Fertilizers

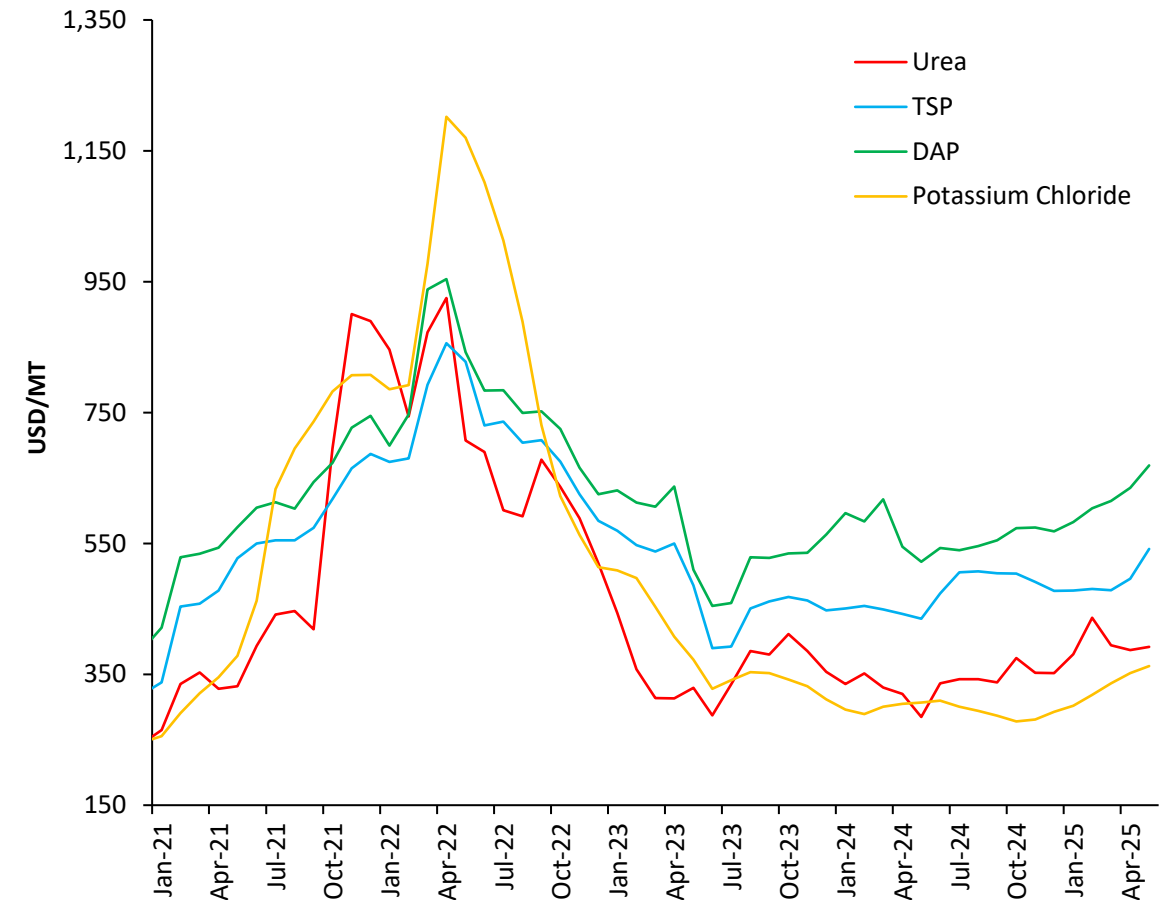


International Agricultural Commodity Prices

FAO Food Price Index



International Fertilizer Prices



The FAO Food Price Index decreased in May 2025 compared to the previous month, with declining prices in categories such as cereals, oils, and sugar, while dairy and meat increased during the month.



Datasets are accessible via:

<https://www.cbsl.gov.lk/en/statistics/statistical-tables/real-sector/production-indicators>



Economic Research Department
Central Bank of Sri Lanka

**The figures for 2024 and 2025 provided in this data summary are highly provisional.*