

Agriculture Sector

Data Bulletin – September 2024

KEY HIGHLIGHTS



Economic Research Department
Central Bank of Sri Lanka

Paddy production in the 2024 Yala season is estimated to be 1.80 million metric tons which is a 1.1% reduction from the previous Yala season.

2024 July/Aug Performance

Fish production increased by 13.9% in July 2024, largely driven by marine fishing activities.

Domestic sugar production increased by 6.8% in July 2024, while global sugar prices were on a downward trend.

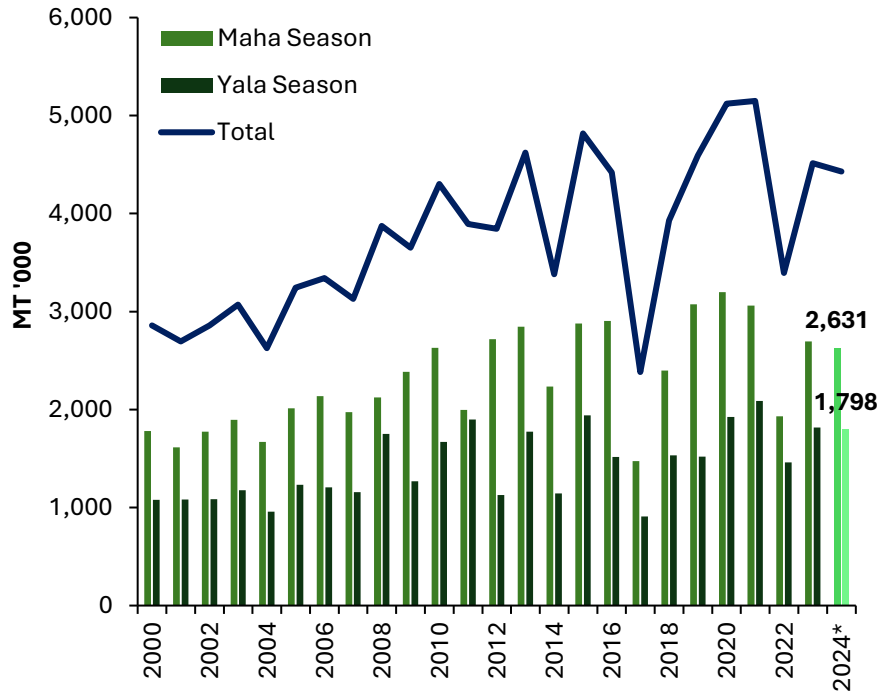
Domestic tea production increased by 7.1% in July 2024. The increasing trend in international tea prices since April 2024 displayed a reversal in August, resulting in a slight decline.

Local rubber production contracted by 10.5% in July 2024. Global rubber prices, which experienced a decline in July 2024, exhibited a notable rebound in August 2024.

Coconut production saw an increase of 2.9% in July 2024.



Paddy Production

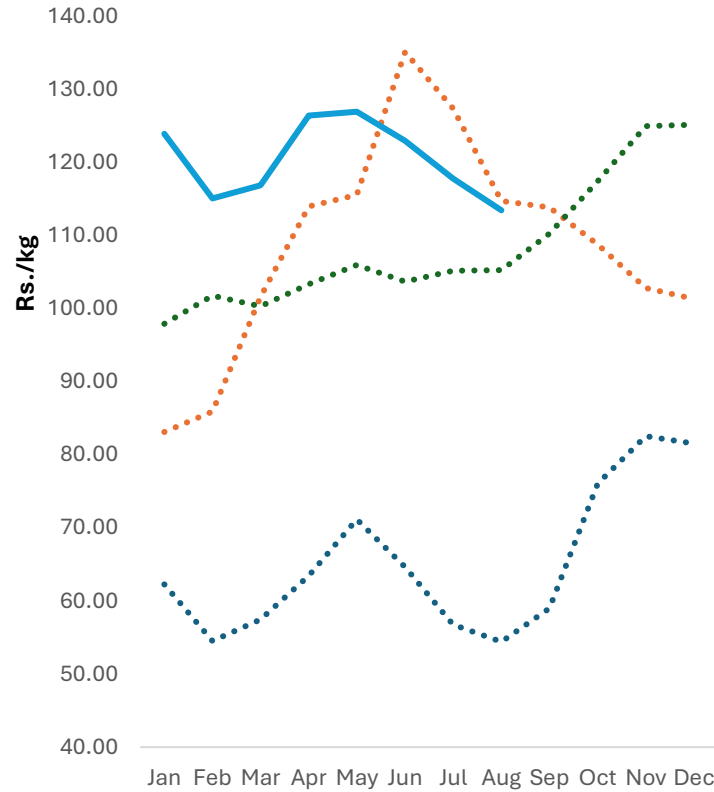


*2023/2024 Maha and 2024 Yala seasons production are based on the Department of Agriculture forecast

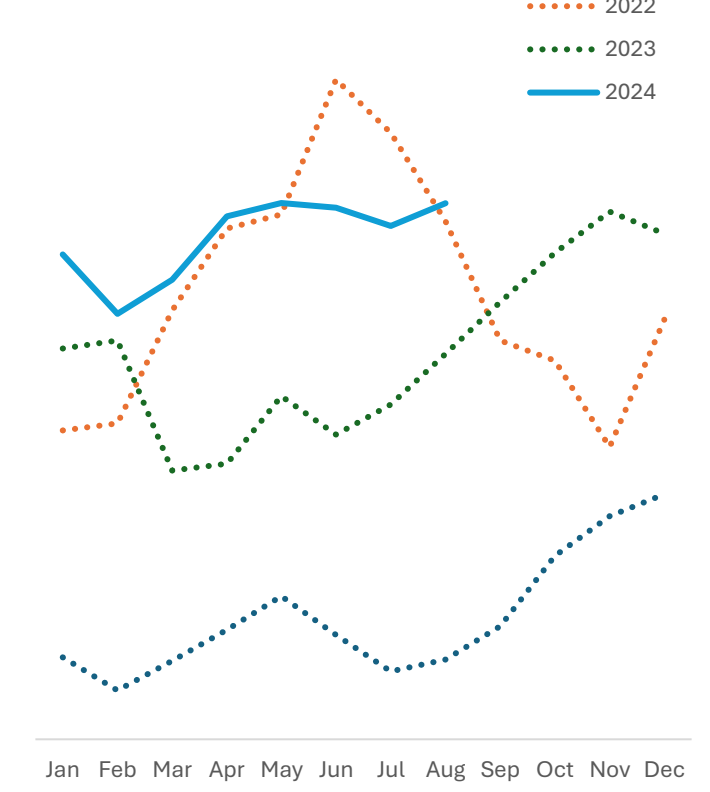
Season	2022 (mn mt)	2023 (mn mt)	Growth (%)	Rice Availability (mn mt) (Without imports)
Maha	1.93	2.70	39.6	1.65
Yala	1.46	1.82	24.3	1.11
Annual	3.39	4.51	33.0	2.76

Paddy Prices

Samba

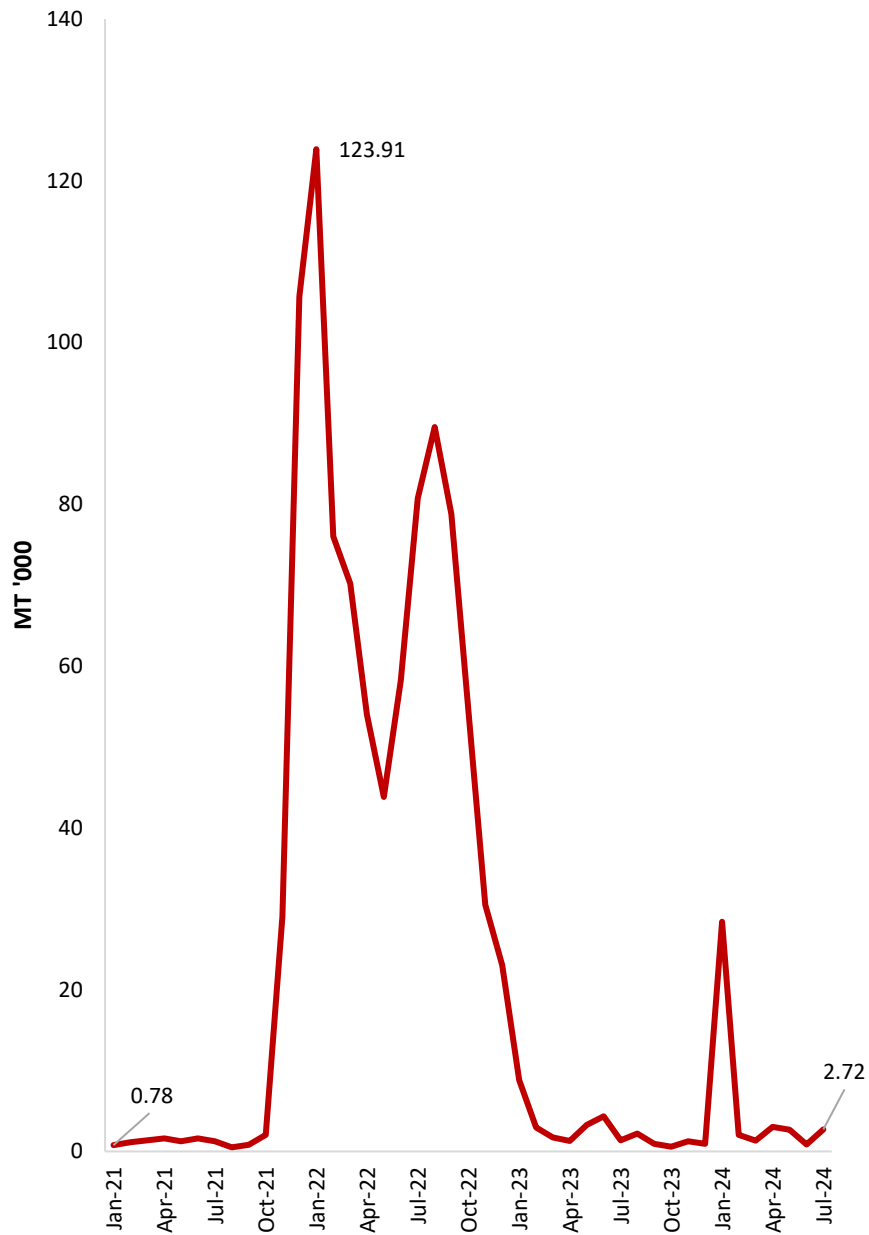


Nadu

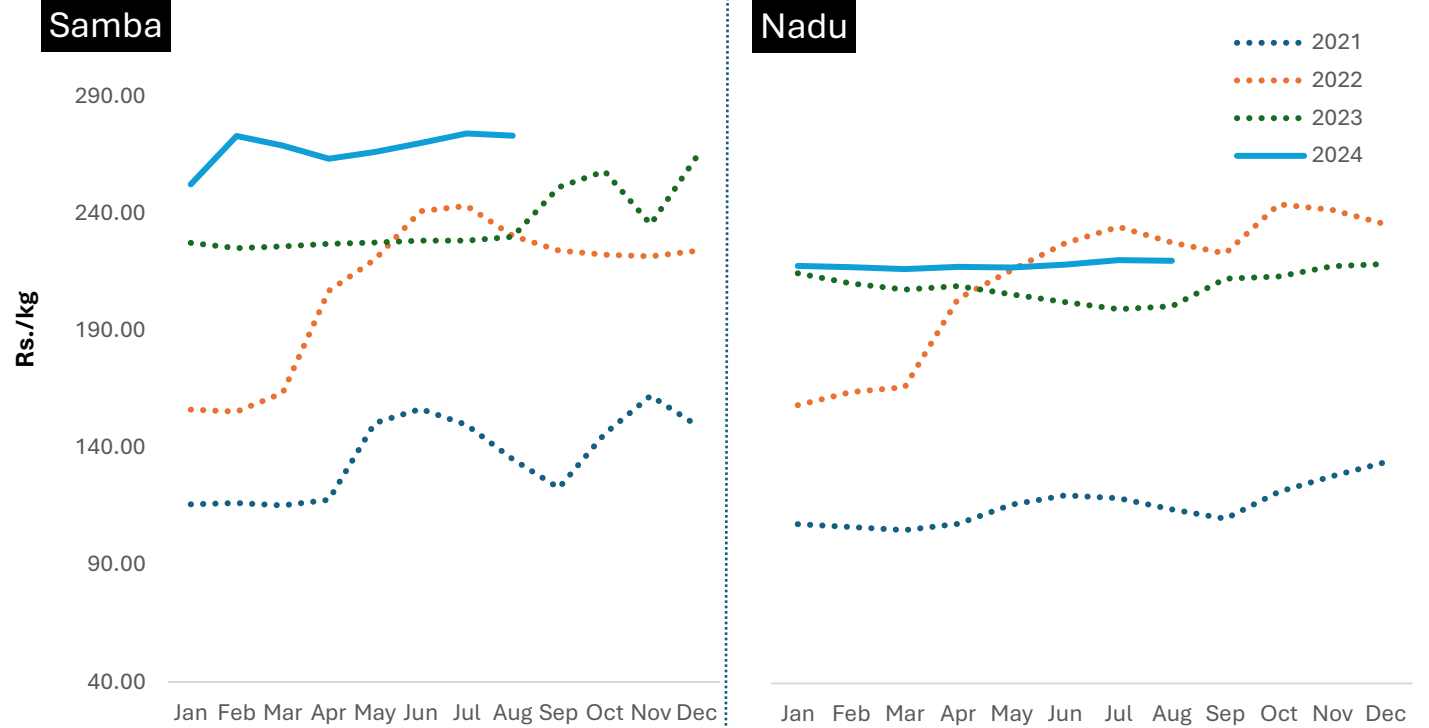


- **The DoA's paddy production forecast for the 2023/2024 Maha season, based on the sown extent reported as of end March 2024, is 2.63 million metric tons (2.4% decline from the previous Maha season).**
- **Paddy production forecast for the 2024 Yala season, based on the sown extent reported as of end July 2024, is 1.80 million metric tons (1.1% decline from the previous Yala season).**

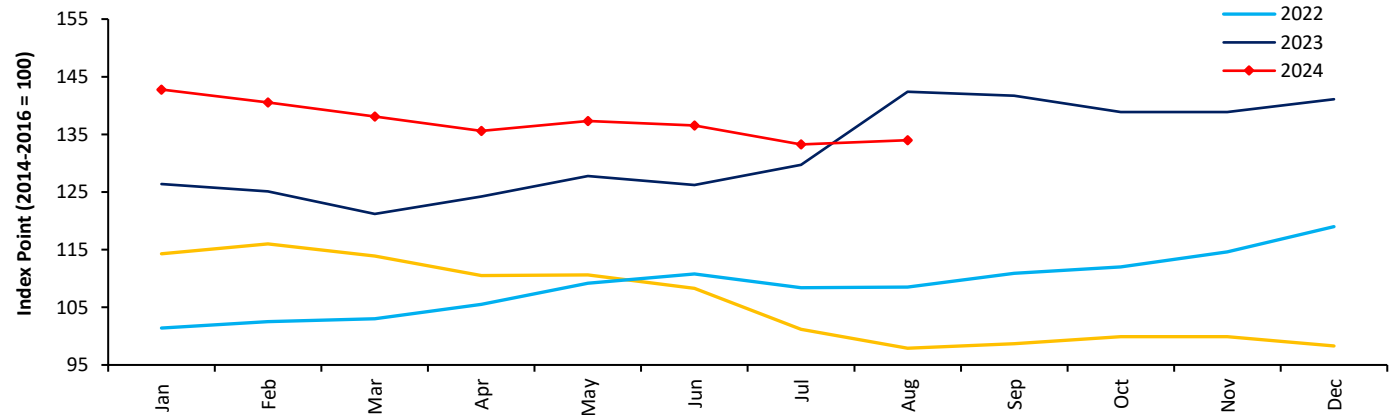
Rice Imports



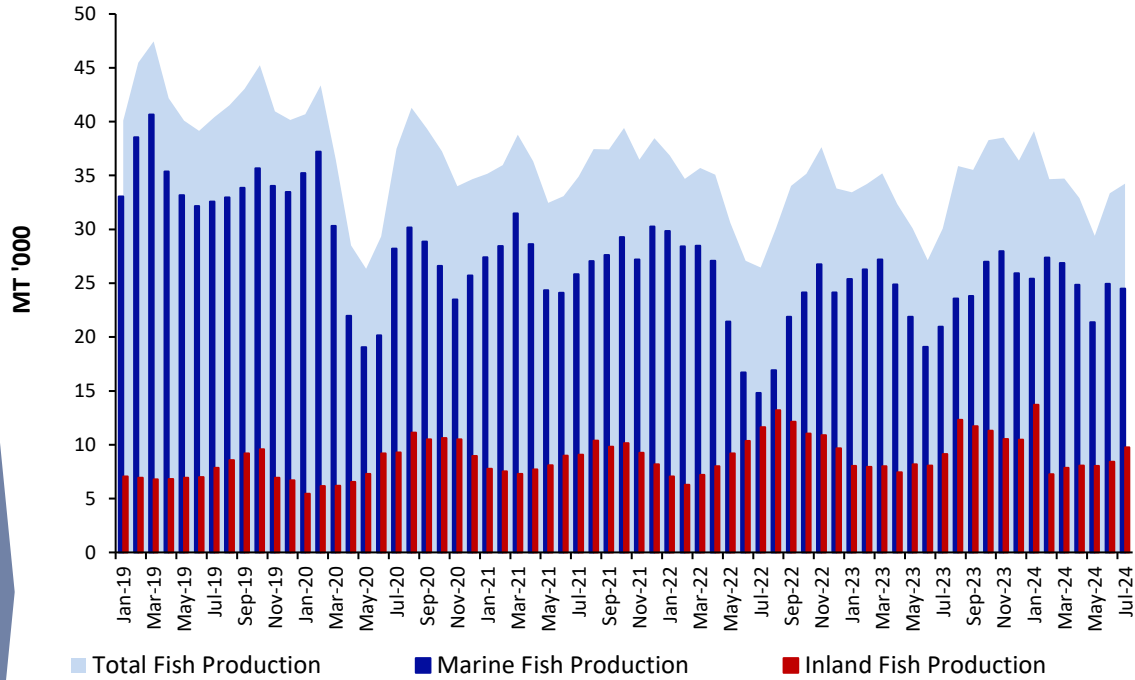
Rice Prices



FAO All Rice Price Index

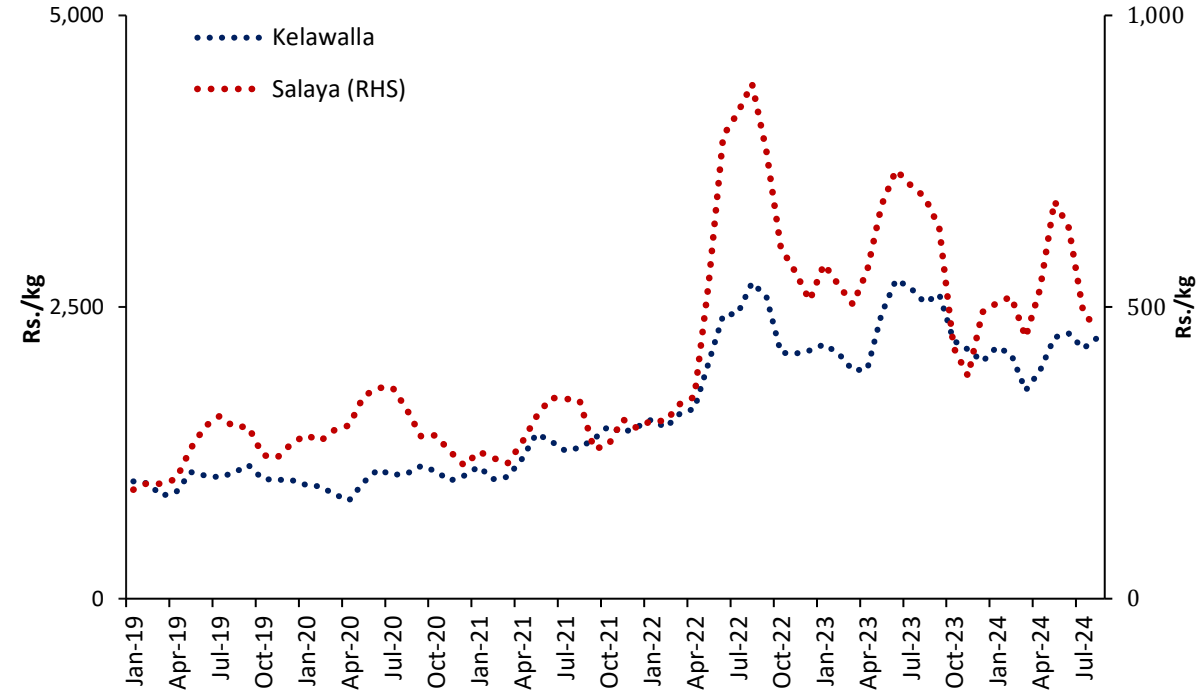


Fish Production



Production (MT '000)	2022	2023	2023 Jan-Jul	2024 Jan-Jul
Marine	281	294	166	175
Inland	117	113	57	63
Total	397	407	222	238

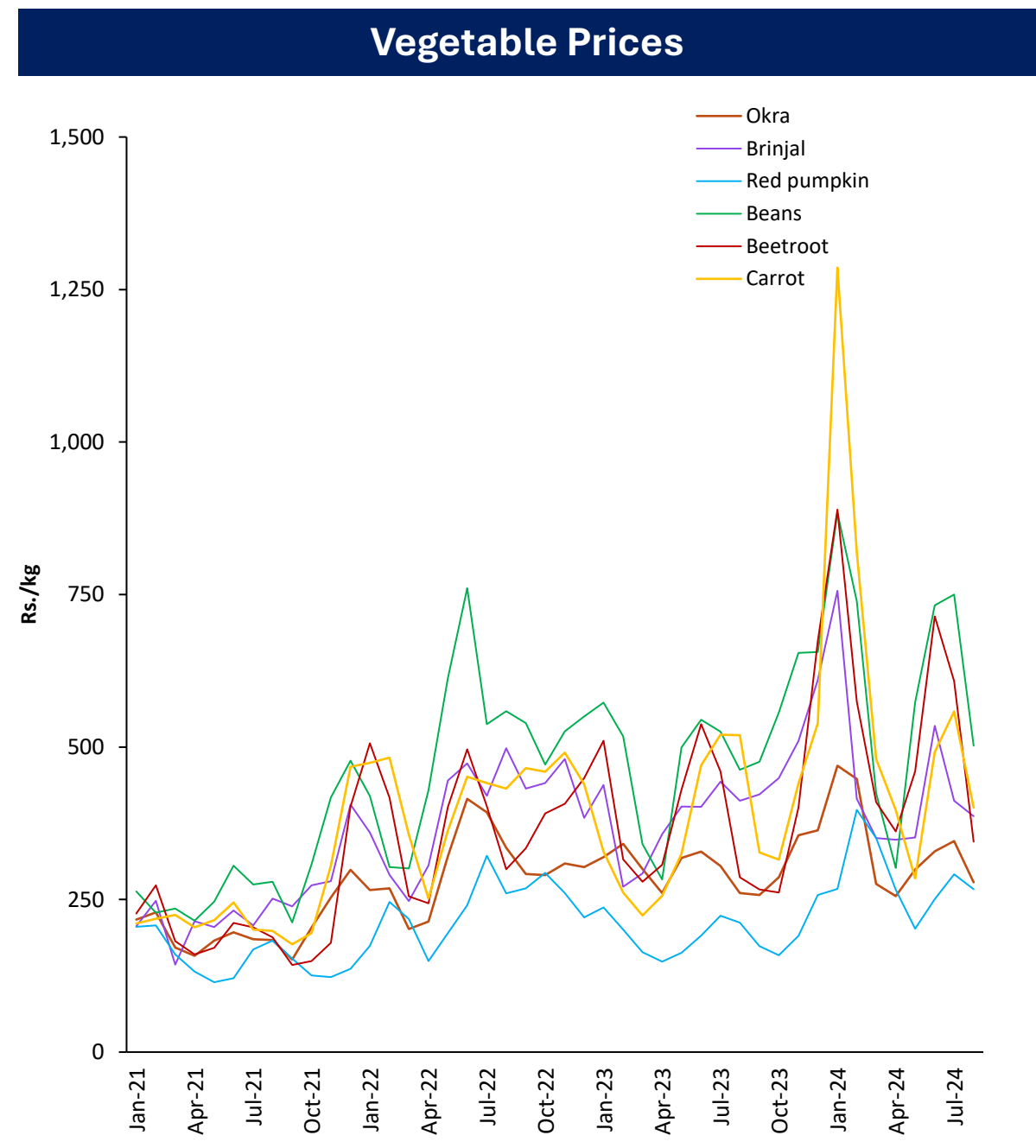
Fish Prices



- Fish production increased by **13.9%** (y-o-y) in July 2024, largely driven by marine fishing activities.
- Retail fish prices have moderated in recent months along with improved weather conditions for fishing activities.

Vegetable Production (MT)					
	2021/22 Maha	2022 Yala	2022/23 Maha	2023 Yala	2023/24 Maha*
Up Country					
Tomatoes	40,656	47,425	46,244	34,169	34,862
Cabbage	49,593	67,069	52,310	47,773	50,193
Carrot	36,372	40,806	40,084	25,267	38,991
Beetroot	18,609	15,580	17,178	21,444	14,337
Raddish	29,796	38,506	26,955	27,557	25,126
Beans	34,253	33,929	41,139	25,287	35,275
Low Country					
Luffa	24,438	19,288	24,852	18,417	14,005
Okra	37,294	36,181	38,984	31,351	32,925
Brinjal	66,621	61,628	80,637	54,450	60,052
Cucumber	18,015	15,959	21,013	26,603	15,781
Red pumpkin	55,465	44,249	59,163	41,779	42,833
Ash plantain	35,600	24,926	35,369	22,833	5,374
Long bean	35,536	30,735	35,395	27,456	33,694

*2023/24 Maha season production is based on the Department of Agriculture forecast



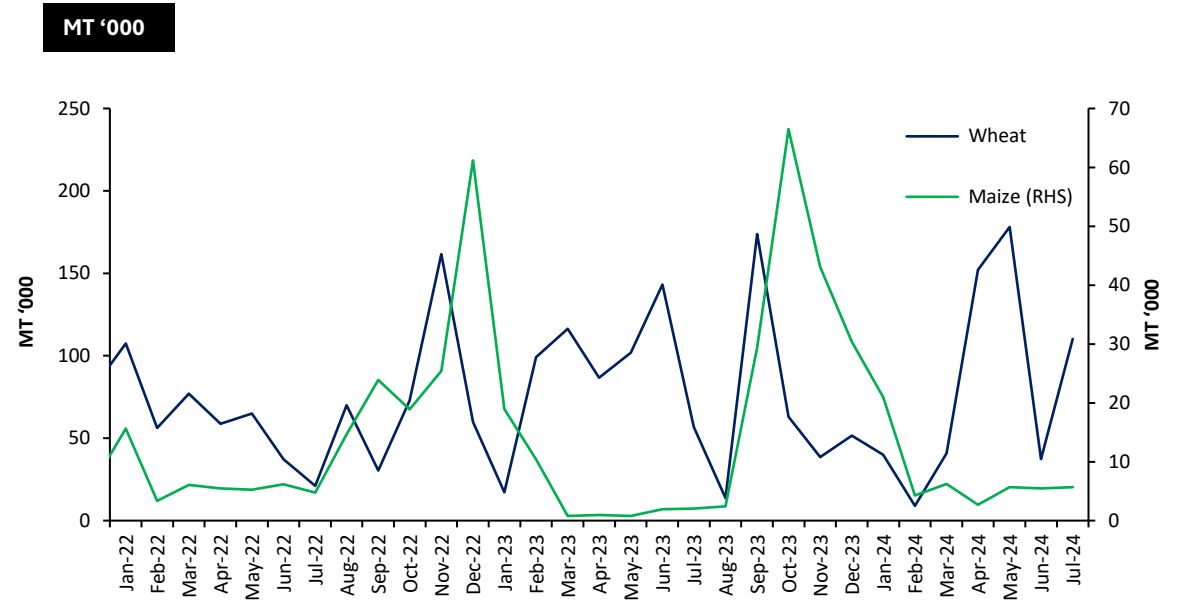
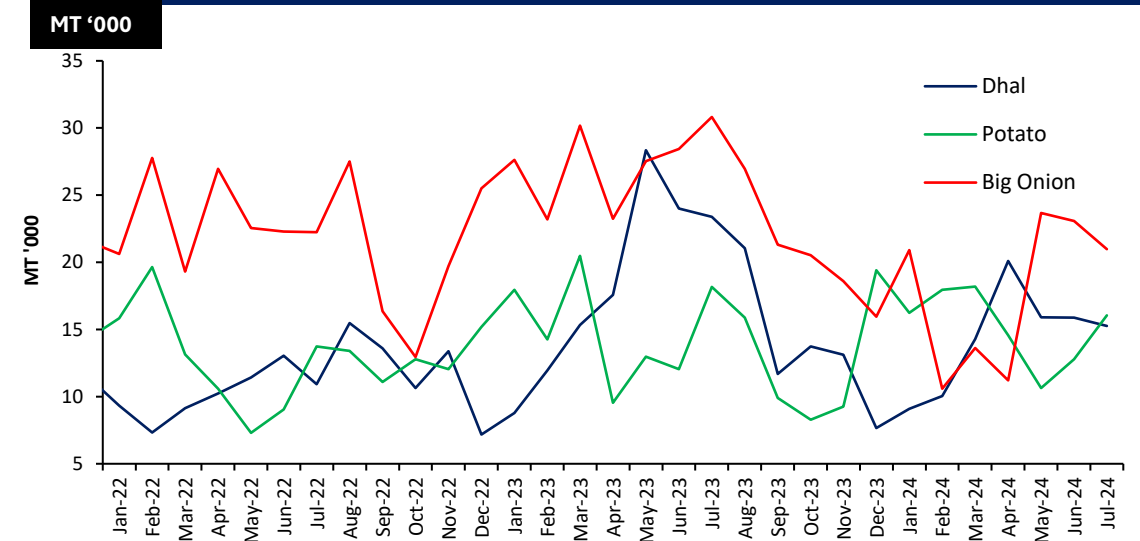
Other Field Crops

	2021/22 Maha	2022 Yala	2022/23 Maha	2023 Yala	2023/24 Maha*
Potato	19,850	27,764	19,723	21,026	21,852
Red Onion	29,903	19,565	26,673	22,678	29,190
Big Onion	635	17,164	329	4,755	76
Green Chillie	35,718	27,316	42,270	25,128	36,096
Cowpea	7,868	6,976	7,022	5,779	8,570
Black gram	7,288	2,632	8,346	1,437	11,072
Maize	236,928	22,112	198,601	22,647	298,985
Ground Nut	15,976	11,204	19,014	10,666	21,647
Gingelly	2,488	7,742	2,701	8,651	1,343
Green gram	5,787	6,757	6,940	5,514	5,621

*2023/24 Maha season production is based on the Department of Agriculture forecast

Imports	2022	2023	2023 Jan - Jul	2024 Jan - Jul
Dhal	131,711	196,601	129,346	100,575
Potato	153,827	168,184	105,441	106,395
Big Onion	263,781	294,386	191,044	124,052

Import Trend of Selected Food Items



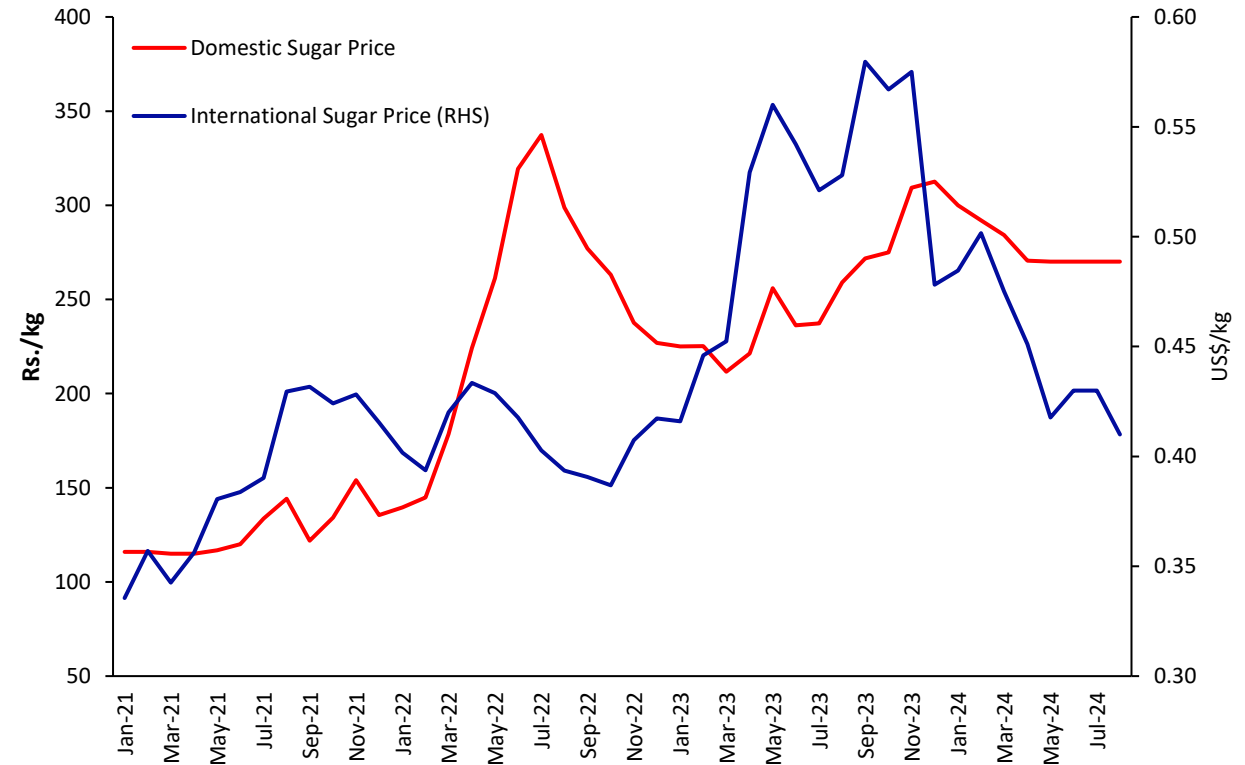
Sugar

	2023 Jan- Jul	2024 Jan-Jul
Sugar Production (MT)	47,608	54,490
Sugar Imports (MT)	432,569	293,564

Import Trend



Price Trend



- Domestic Sugar production increased by **6.8%** (y-o-y) during the month of July 2024.
- International sugar prices declined in August 2024, mainly due to an improved production outlook for the 2024/25 season in Thailand and India, supported by favourable rainfall. Additionally, lower international crude oil prices exerted further downward pressure on sugar prices.

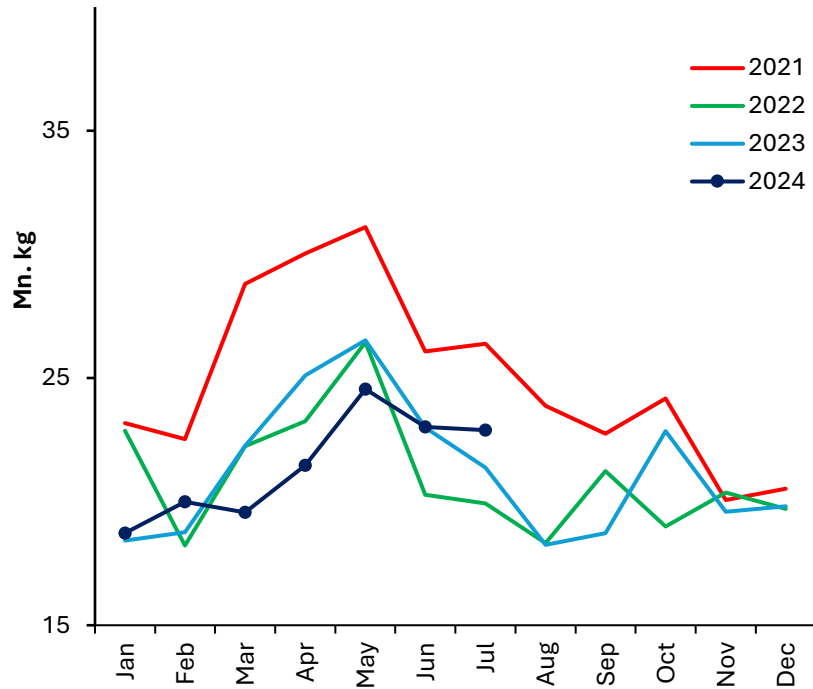
Livestock

	2023 May	2024 Apr	2024 May	
Production	Egg (mn)	192	221	223
	Chicken (000 MT)	19	22	21
Price	Egg-White (Rs./egg)	44.00	47.50	47.50
	Egg - Red (Rs./egg)	46.00	49.00	49.67
	Chicken (Rs./kg)	1,471.70	1,316.94	1,185.61
Cost of Production	Egg (Rs./egg)	37.13	31.67-34.59	32.08-34.66
	Chicken (Rs./kg)	896.97	776.81	775.43

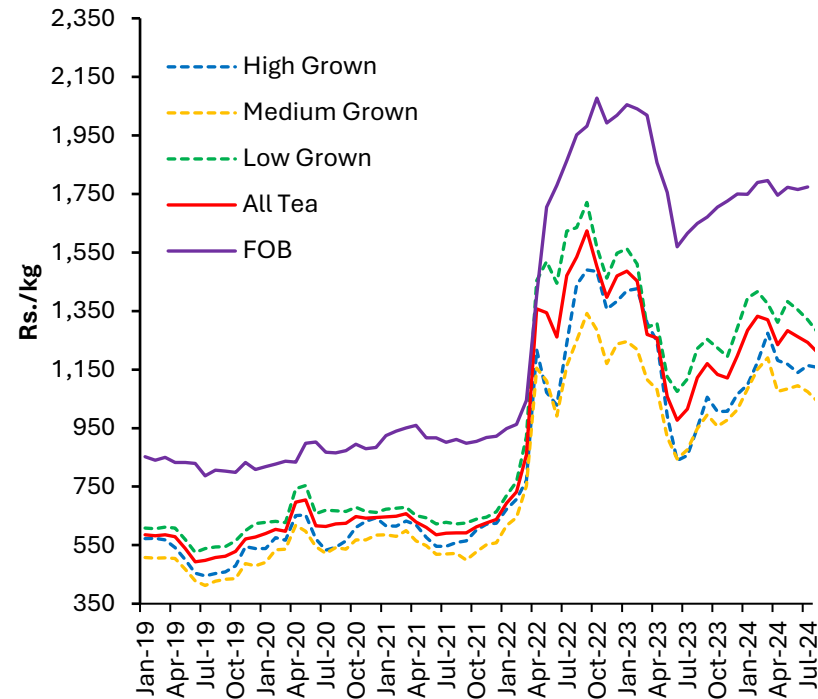
Feed Ingredients (Rs./kg)	2023 May	2024 Apr	2024 May
Maize	n.a	158.02	172.50
Soya bean meal	301.31	234.58	233.88
Fish meal	371.88	350.00-481.25	325.00-430.00
Rice polish	79.48	96.79	112.75
Rice bran	138.75	68.33	77.50

Tea

Tea Production



Tea Auction Prices & FOB Prices



International Tea Prices

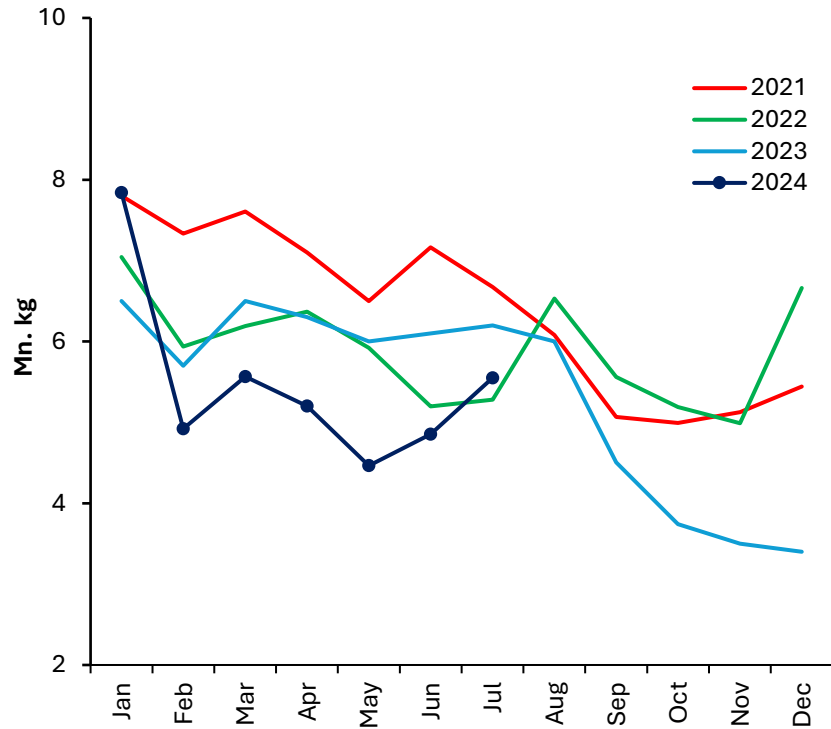


Tea Production (mn kg)	2023	2023 Jan-Jul	2024 Jan-Jul	Growth %
High grown	58.0	36.3	34.0	(6.2)
Medium grown	42.2	25.9	26.5	2.1
Low grown	154.5	93.2	89.7	(3.8)
Total	254.7	155.4	150.2	(3.4)

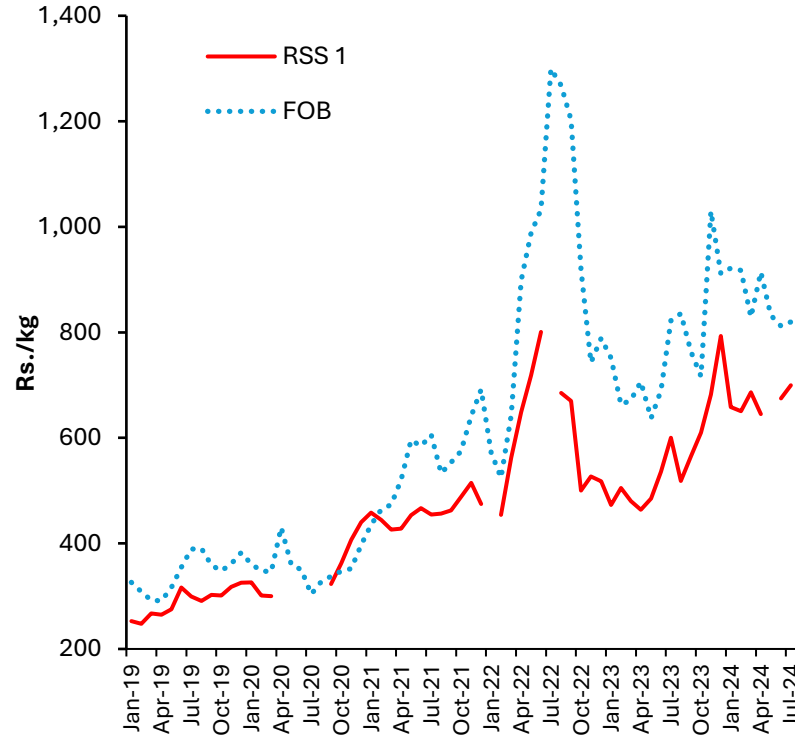
- Domestic tea production increased by **7.1% (y-o-y)** during the month of July 2024.
- Global tea prices fell slightly in August 2024 mainly attributed to an increased supply from major tea-producing regions.

Rubber

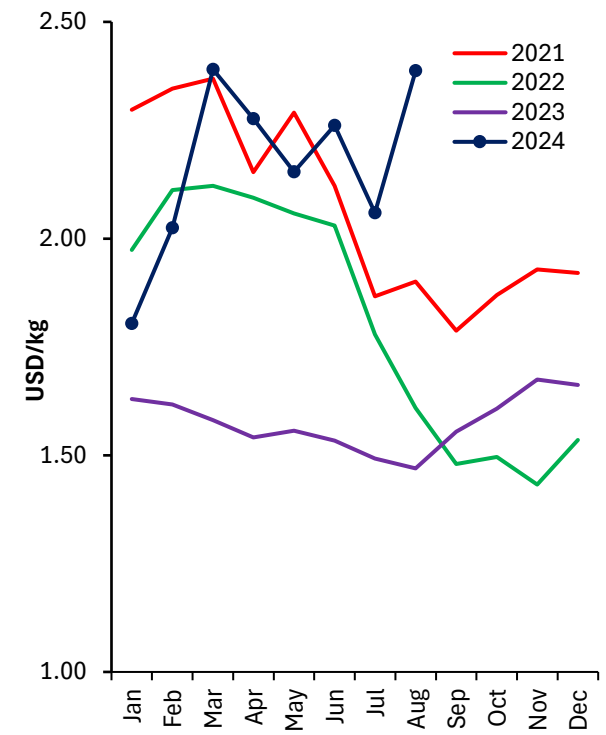
Rubber Production



Rubber Auction Prices & FOB Prices



International Rubber Prices



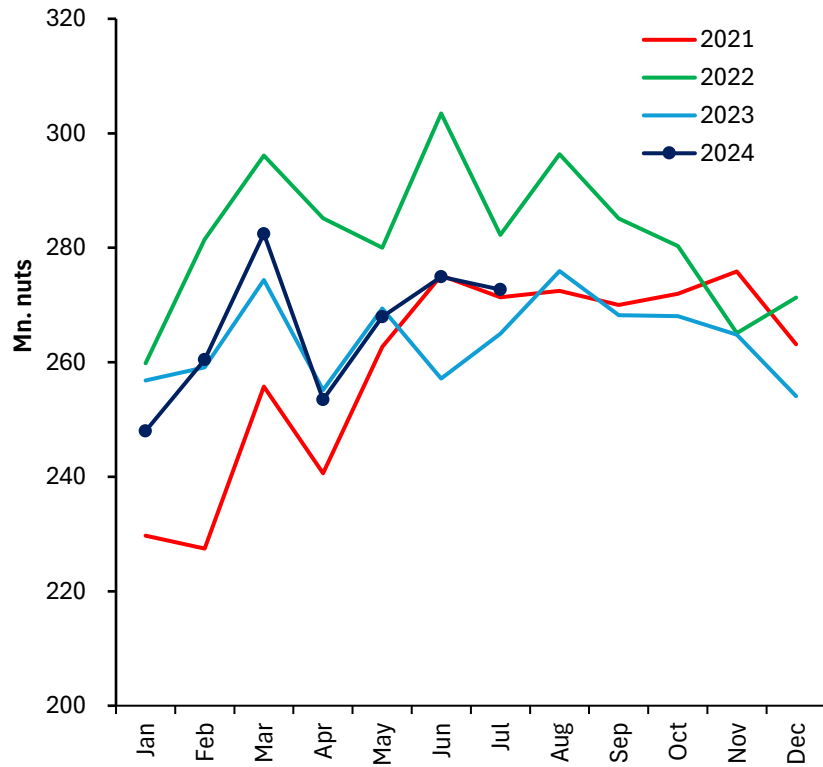
*Rubber, RSS3

Rubber Production (mn kg)	2023	2023 Jan-Jul	2024 Jan-Jul	Growth %
Sheet Rubber	32.2	20.5	17.8	(13.4)
Crepe Rubber	11.1	7.4	5.7	(22.1)
Other	21.1	15.4	14.9	(3.4)
Total	64.4	43.3	38.4	(11.3)

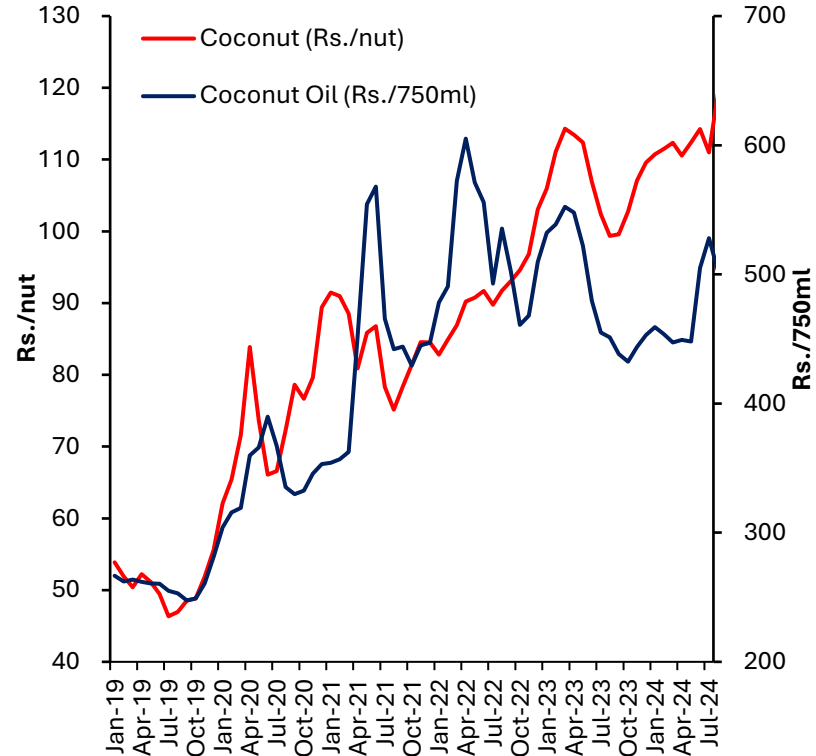
- Domestic rubber production decreased by **10.5% (y-o-y)** during the month of July 2024.
- In August 2024, international natural rubber prices experienced an increase attributed to a combination of factors, including adverse weather conditions in key production areas, supply chain disruptions, and increased global demand.

Coconut

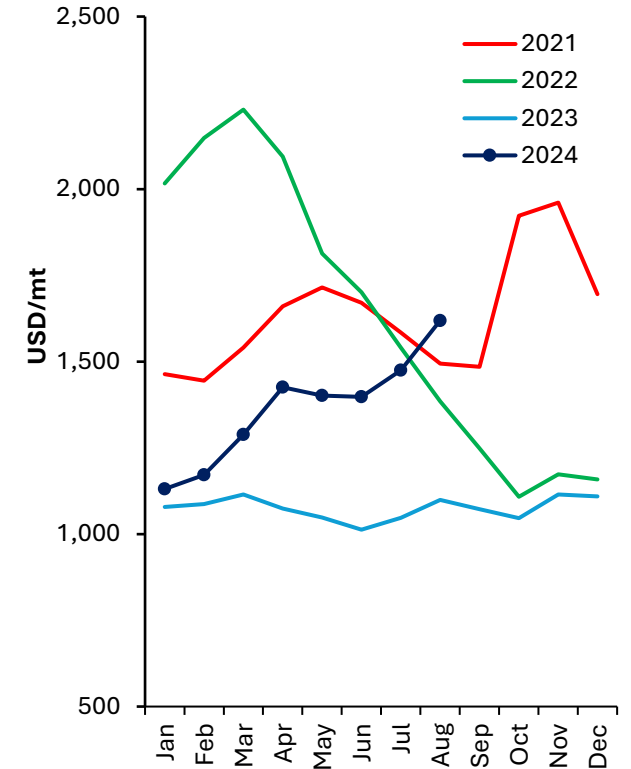
Coconut Production



Price of Coconut and Coconut Oil



International Coconut Oil Prices

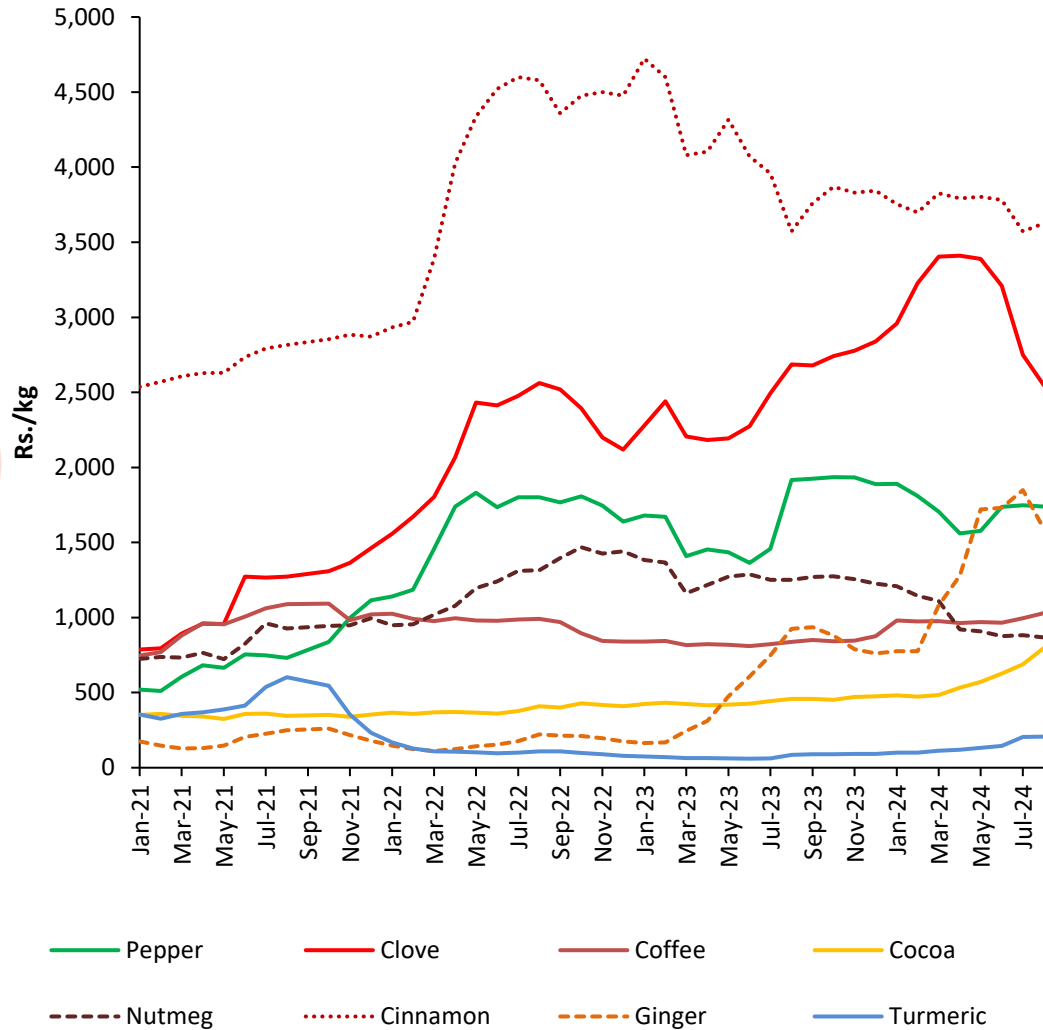


Coconut Production	2023	2023 Jan-Jul	2024 Jan-Jul	Growth %
Coconut (mn nuts)	3,170	1,837	1,860	1.2
Desiccated Nut (MT)	31,985	16,533	19,151	15.8
Coconut Oil (MT)	43,475	29,609	18,197	(38.5)

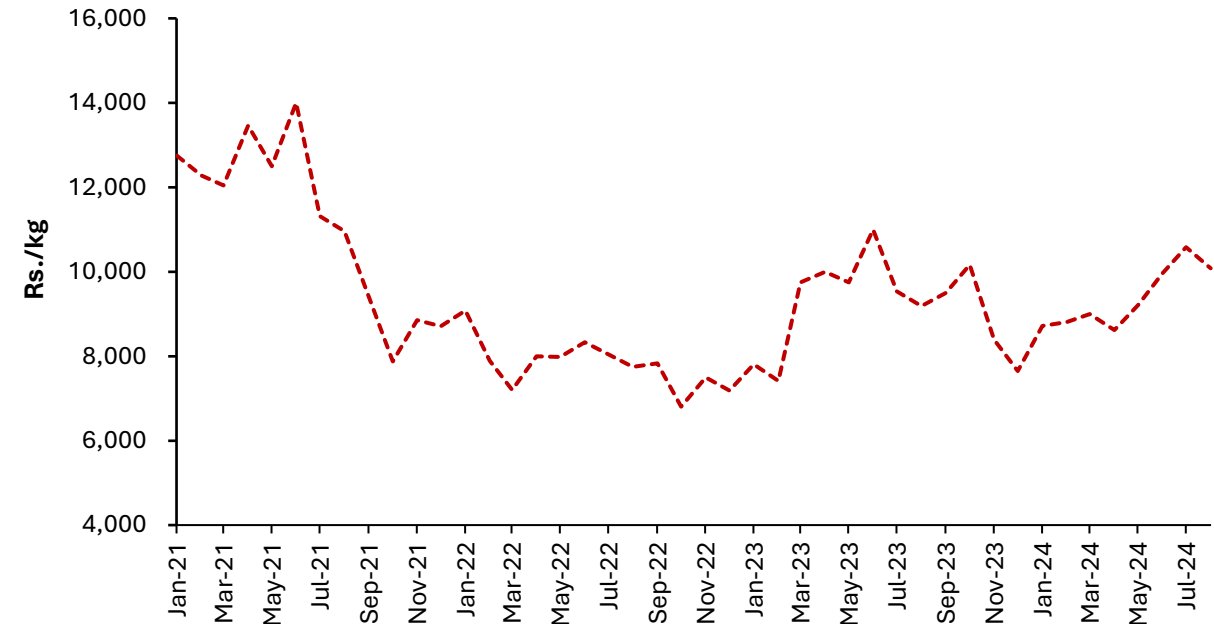
• Domestic coconut production increased by **2.9% (y-o-y)** during the month of July 2024.

Other Export Agriculture

Prices of Selected Export Agriculture Crops



Price of Cardamom



- In August 2024, the market prices of export crops such as Coffee, Cocoa, Cinnamon, and Turmeric experienced an increase, while prices of Pepper, Clove, Cardamom, Nutmeg, and Ginger registered a decline (m-o-m basis).
- Earnings from exports of spices increased in the month of July 2024 (y-o-y) mainly due to the strong performance in the export of Pepper.

Agricultural Input Import Trends

Imports	2022	2023	2023 Jan - Jun	2024 Jan - Jun
---------	------	------	-------------------	-------------------

Plants and Seeds

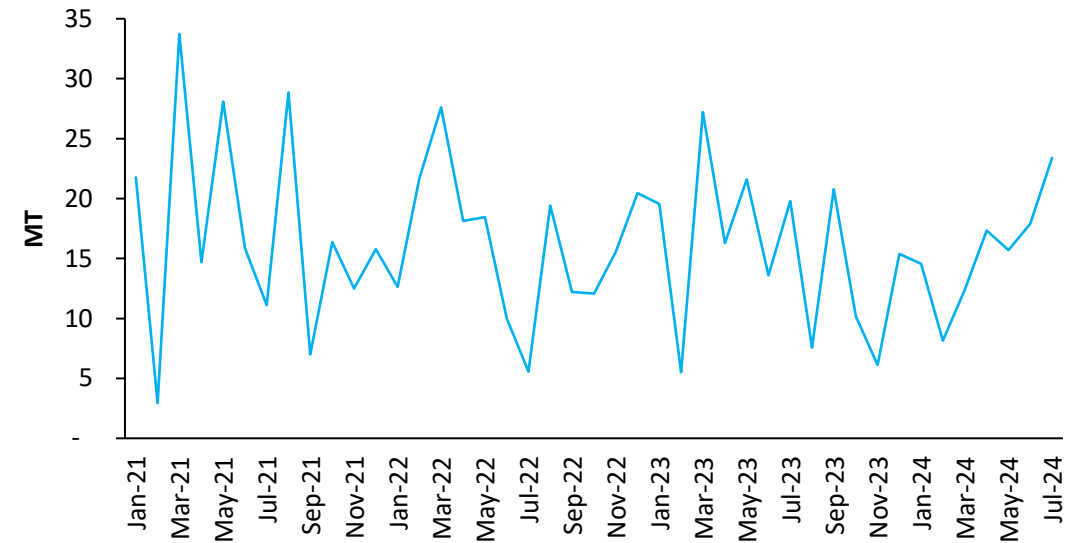
Vegetable seeds (MT)	194	184	124	109
Potato seed (MT)	1,001	797	50	146
Plants & parts (MT)	3,848	4,236	2,187	3,708
Live trees and other plants (No. '000)	1,555	1,039	436	705

Fertilizers (MT '000)

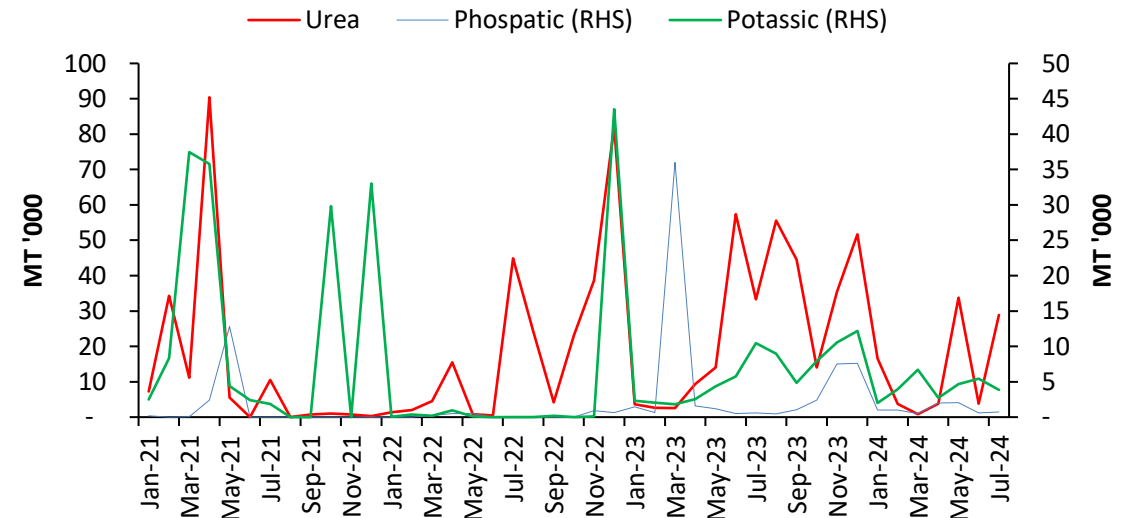
Urea	242	324	123	91
Other nitrogenous fertilizers	57	65	35	31
Phosphatic	3	61	42	8
Potassic	46	74	29	29
Other fertilizers	16	19	11	8

Import Trend of Selected Agricultural Inputs

Vegetable Seeds

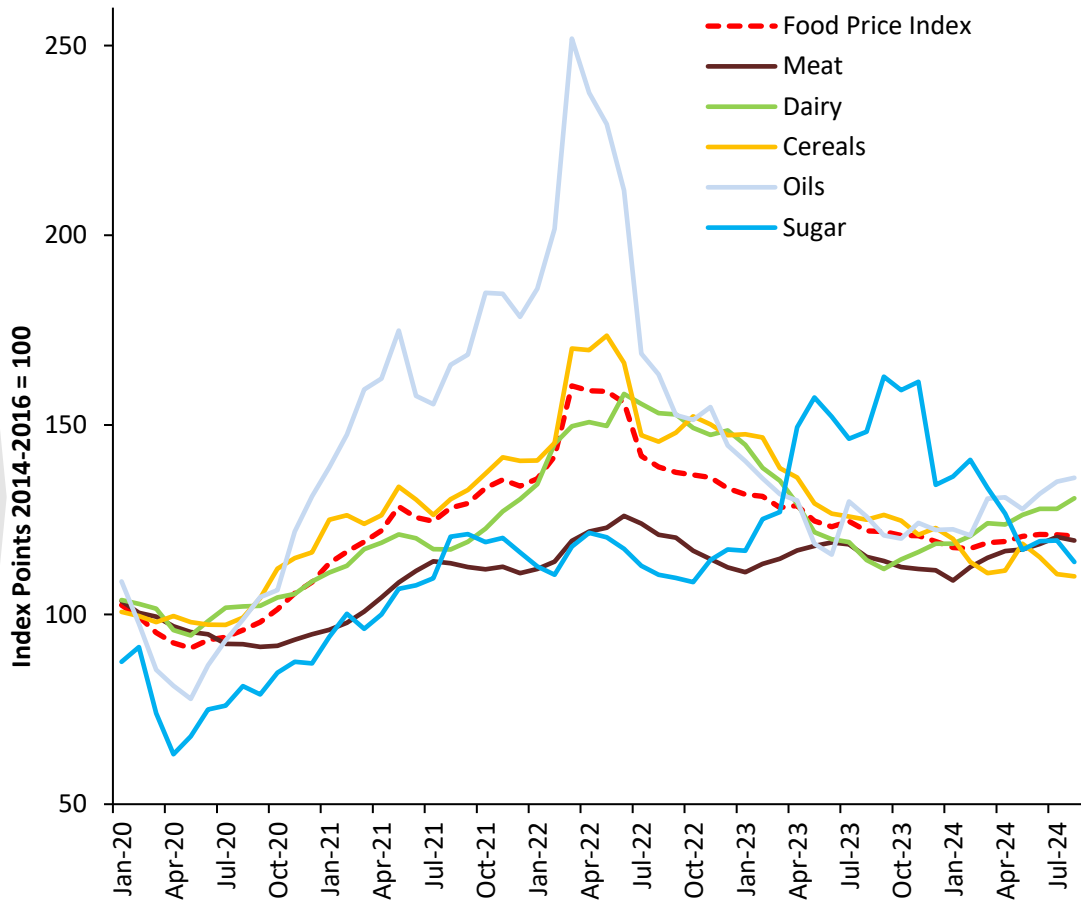


Fertilizers

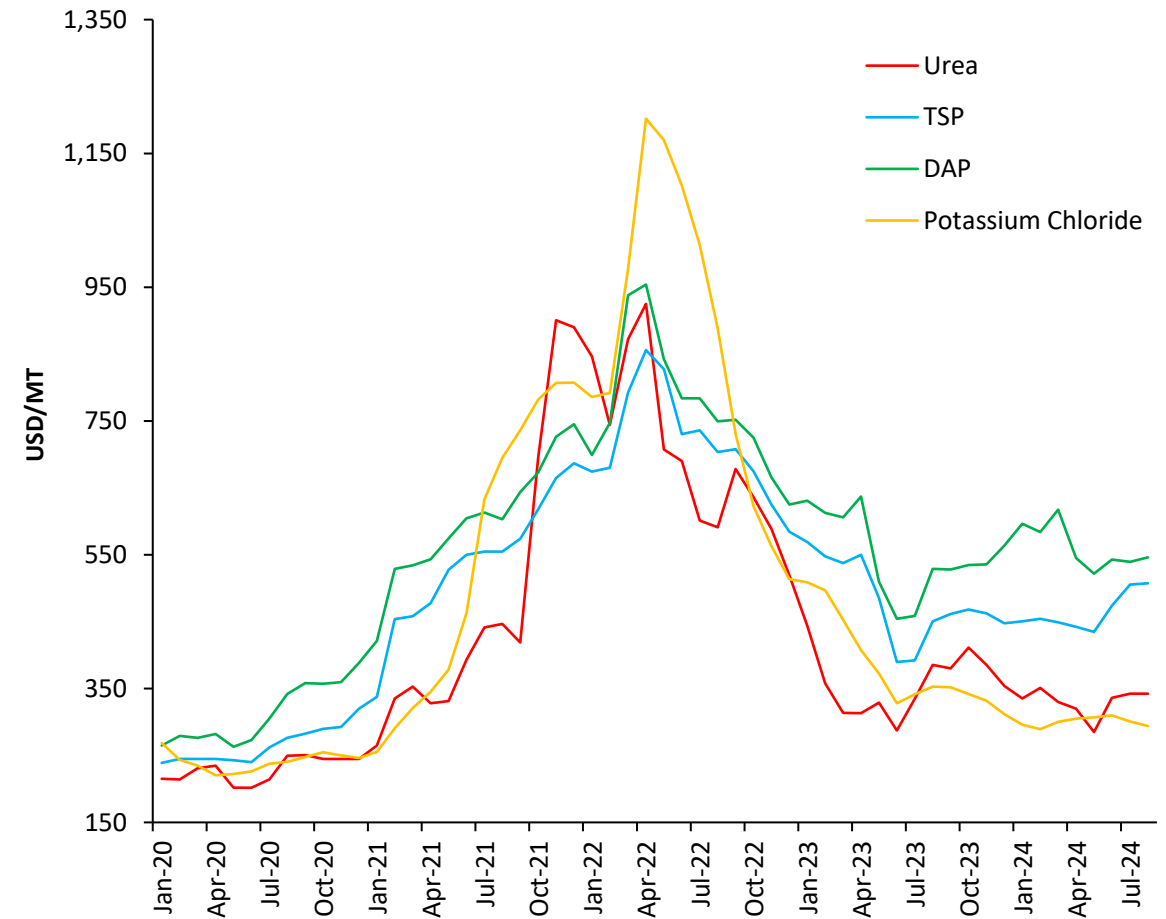


International Agricultural Commodity Prices

FAO Food Price Index



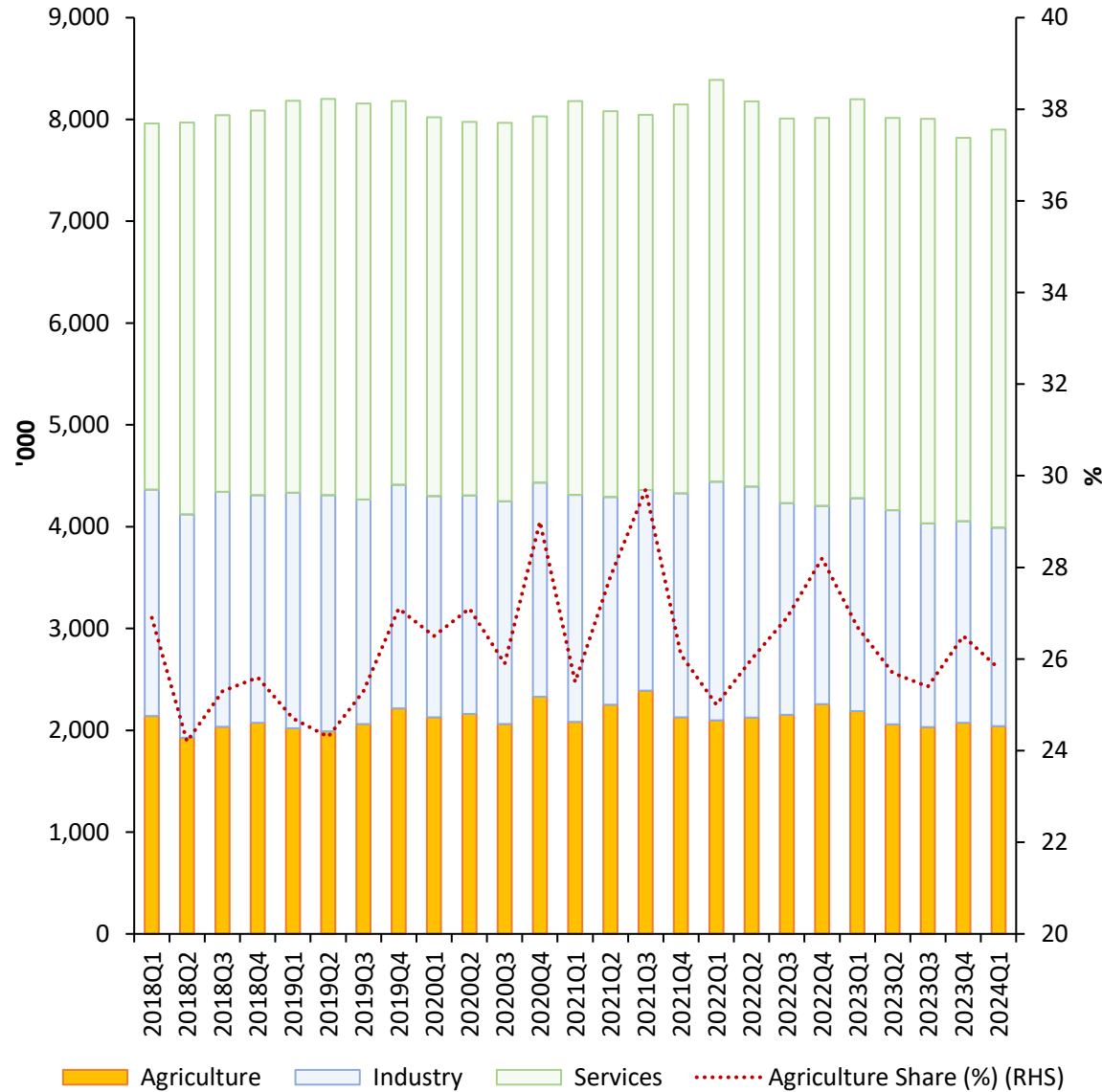
International Fertilizer Prices



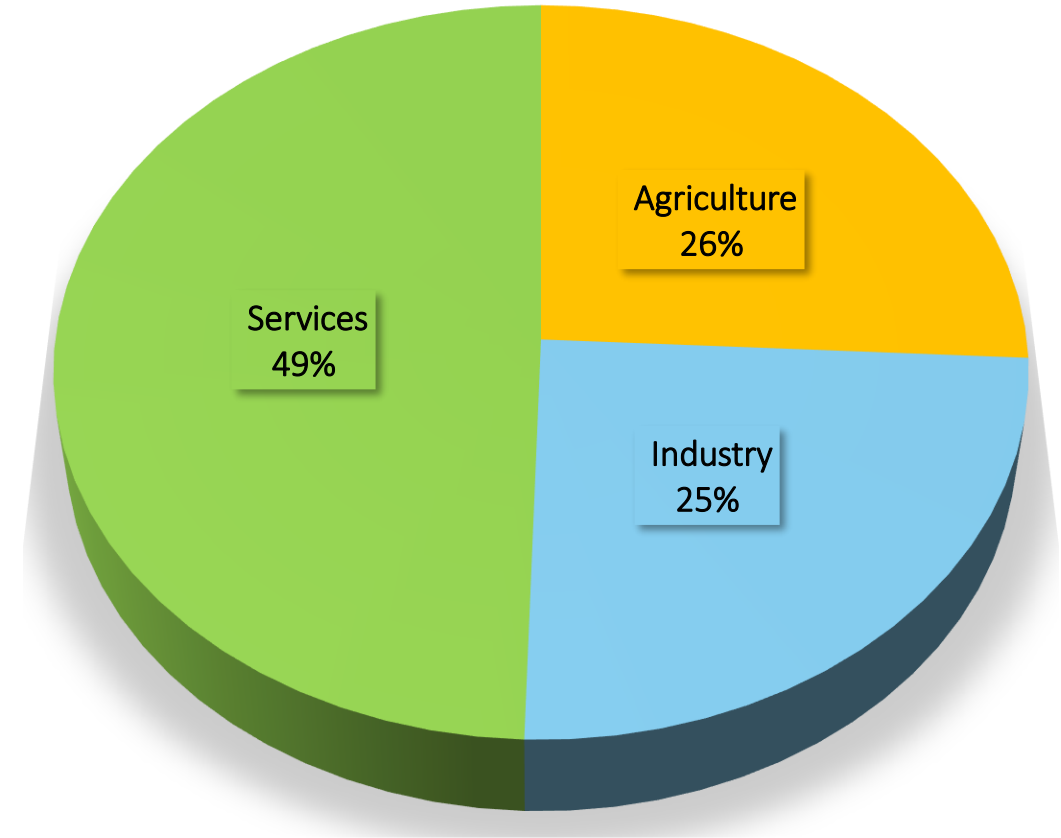
- The FAO Food Price Index experienced a marginal decline in August 2024, as reductions in sugar, meat, and cereal prices offset the increases in dairy and vegetable oil prices.

Employment in Agriculture

Sector-wise Employed Population



Sector-wise Employed Population – 2024 Q1



EMPLOYMENT



Datasets are accessible via:

<https://www.cbsl.gov.lk/en/statistics/statistical-tables/real-sector/production-indicators>



Economic Research Department
Central Bank of Sri Lanka

**The figures for 2023 and 2024 provided in this data summary are highly provisional.*