



# Agriculture Sector

## *Data Summary*

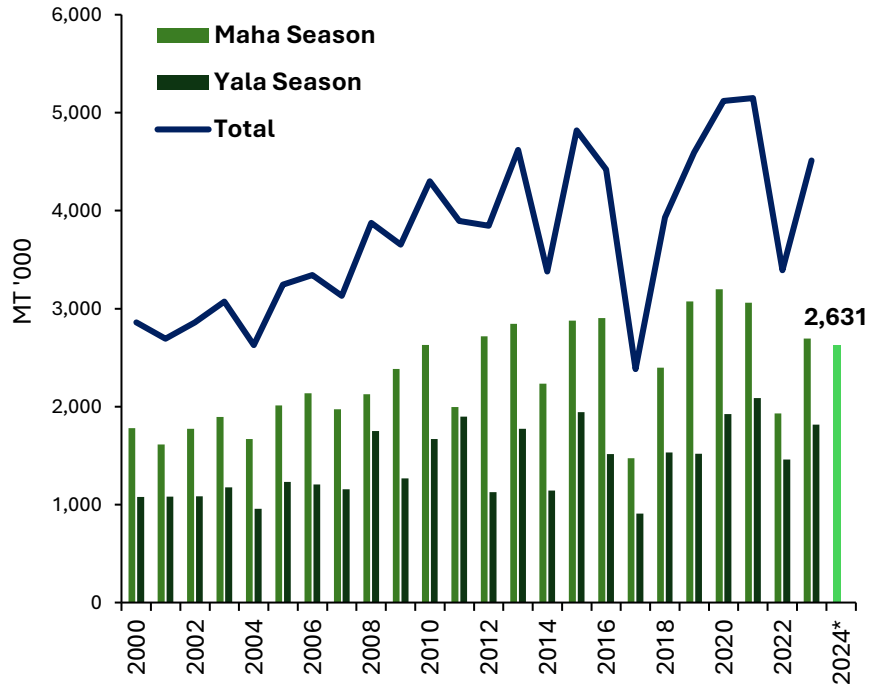
---

June 2024



**Economic Research Department**  
Central Bank of Sri Lanka

# Paddy Production

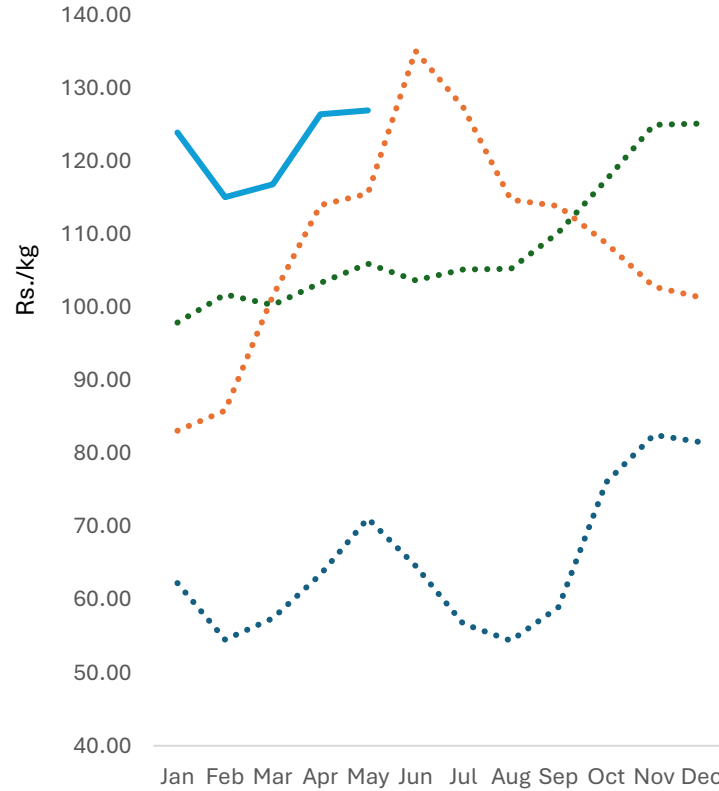


\*2023/2024 Maha season production is based on the Department of Agriculture forecast

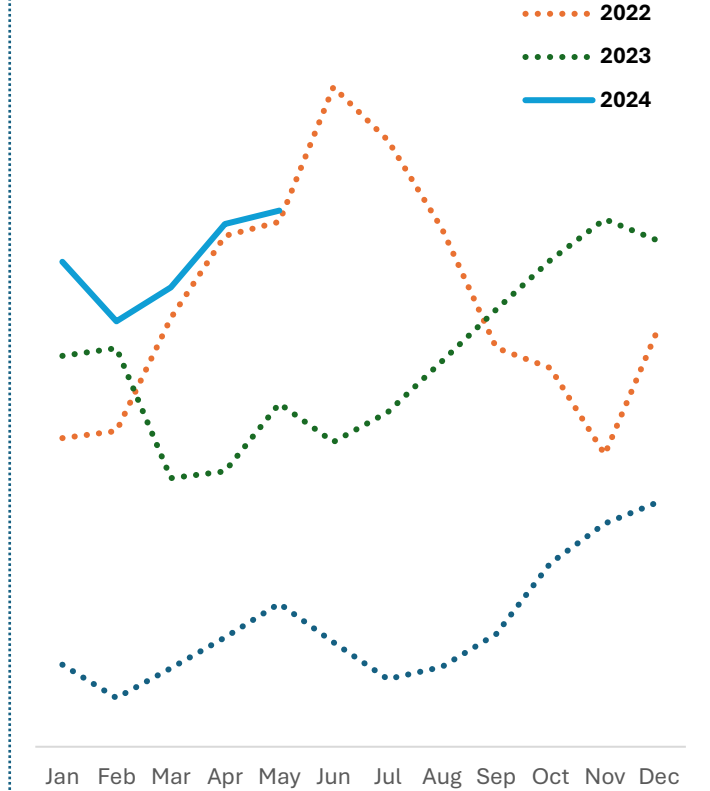
Season	2022 (mn mt)	2023 (mn mt)	Growth (%)	Rice Availability (mn mt) (Without imports)
Maha	1.93	2.70	39.6	1.65
Yala	1.46	1.82	24.3	1.11
Annual	3.39	4.51	33.0	2.76

# Paddy Prices

## Samba



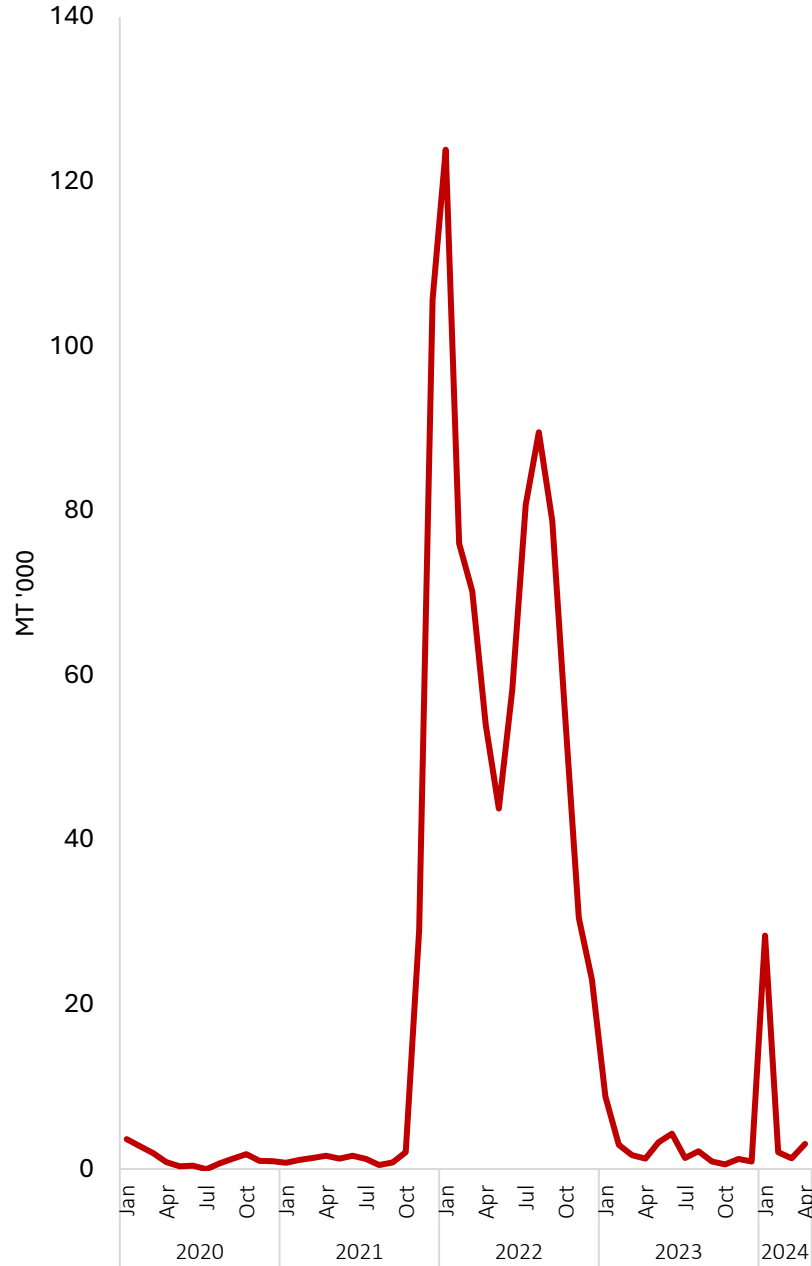
## Nadu



- According to provisional data from the Department of Census and Statistics, paddy production for 2023 is estimated at around **4.5 million metric tons (y-o-y growth of 33.0 per cent)** which is sufficient to meet domestic household demand for about **13 months**.
- The DoA's paddy production forecast for the 2023/2024 Maha season, based on the sown extent reported as of end March 2024, is **2.63 million metric tons (2.4% decline from the previous Maha season)**.

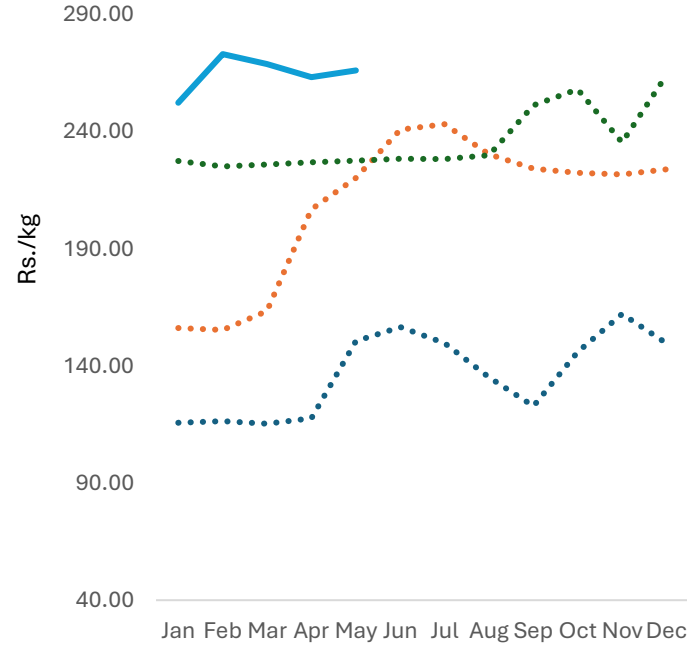
Sources: Department of Census and Statistics, Department of Agriculture, Hector Kobbekaduwa Agrarian Research and Training Institute

## Rice Imports

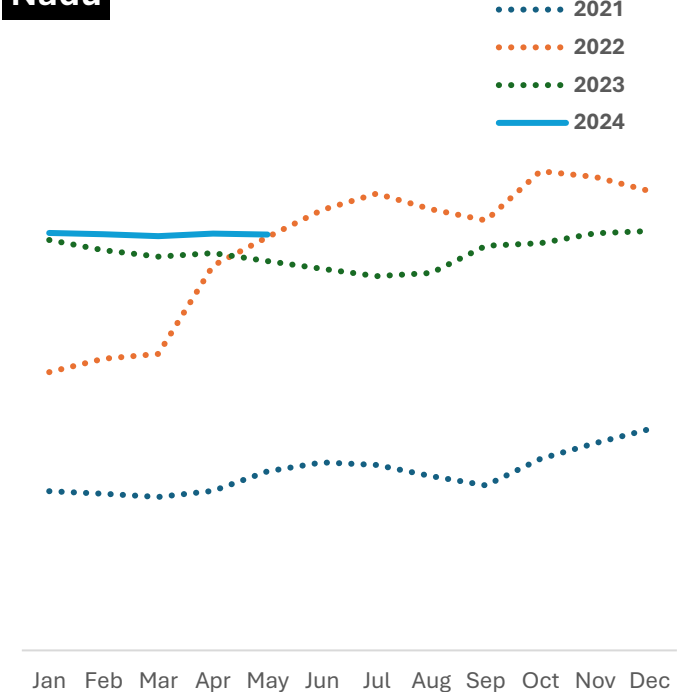


## Rice Prices

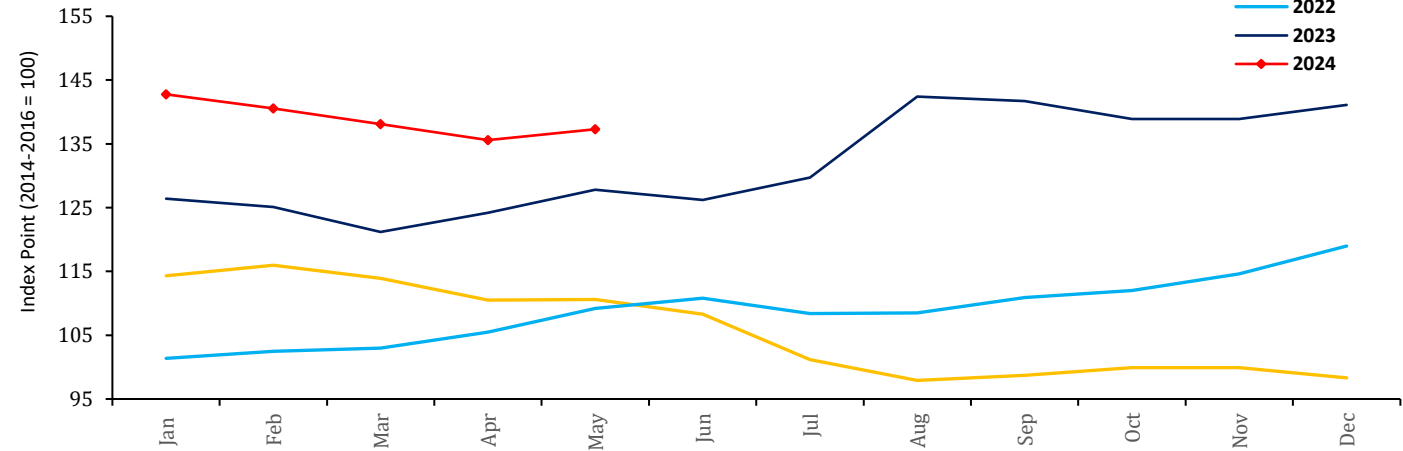
### Samba



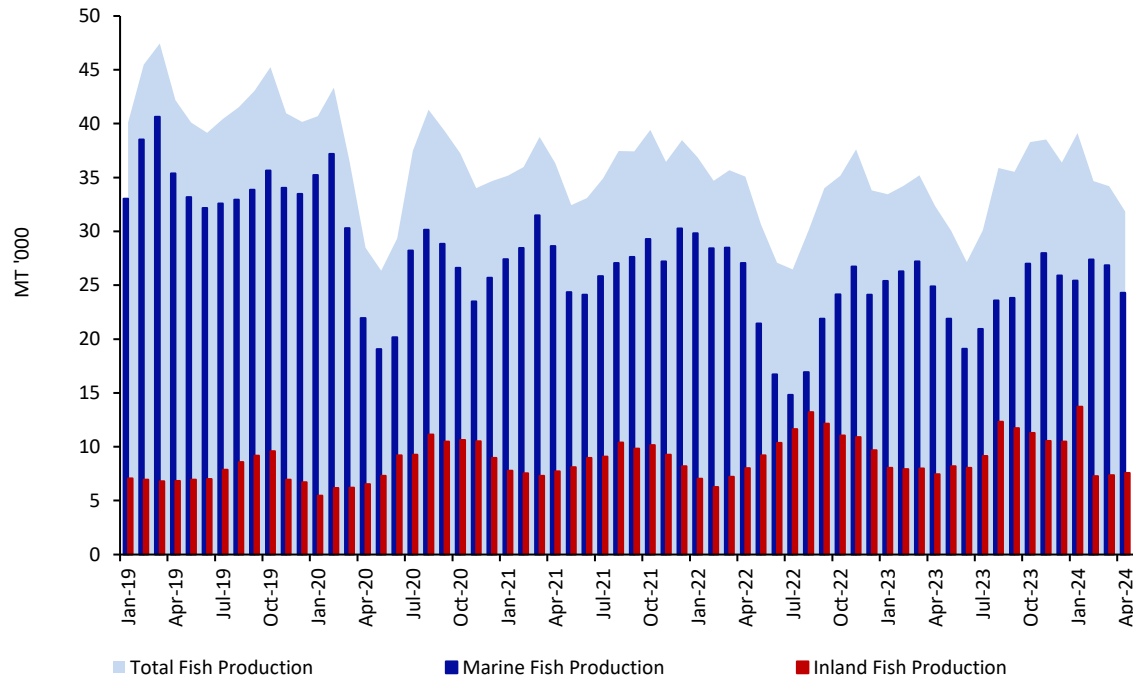
### Nadu



### FAO Rice Price Index

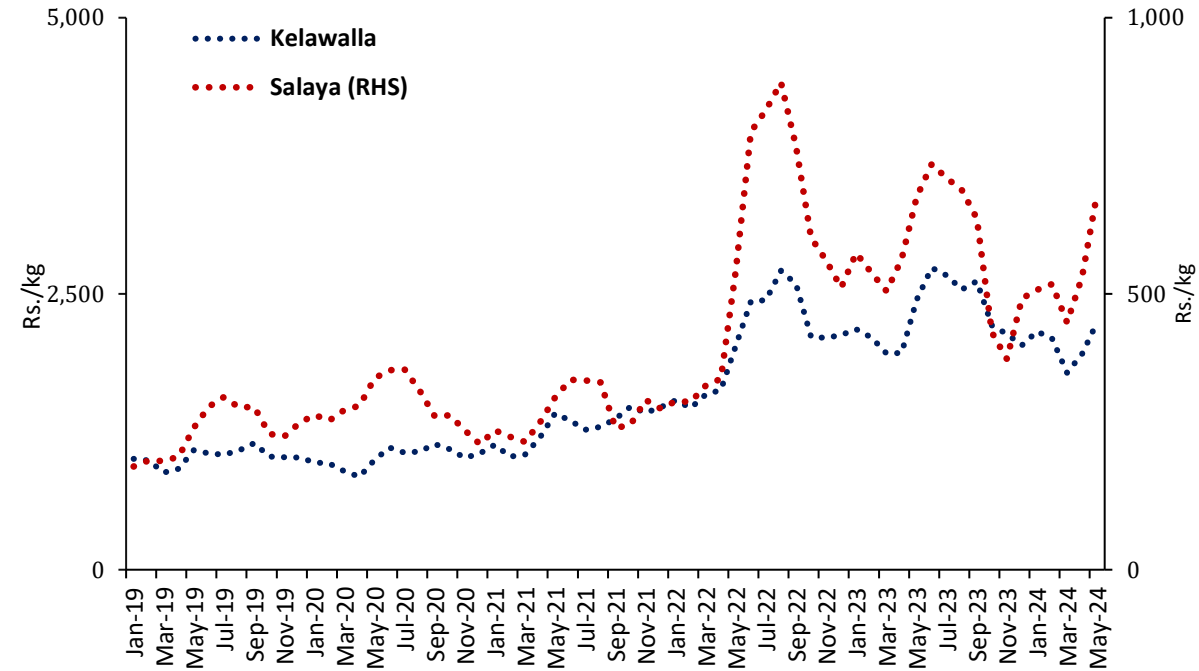


## Fish Production



Production (MT '000)	2022	2023	2023 Jan-Apr	2024 Jan-Apr
<b>Marine</b>	281	294	104	<b>104</b>
<b>Inland</b>	117	113	31	<b>36</b>
<b>Total</b>	397	407	135	<b>140</b>

## Fish Prices

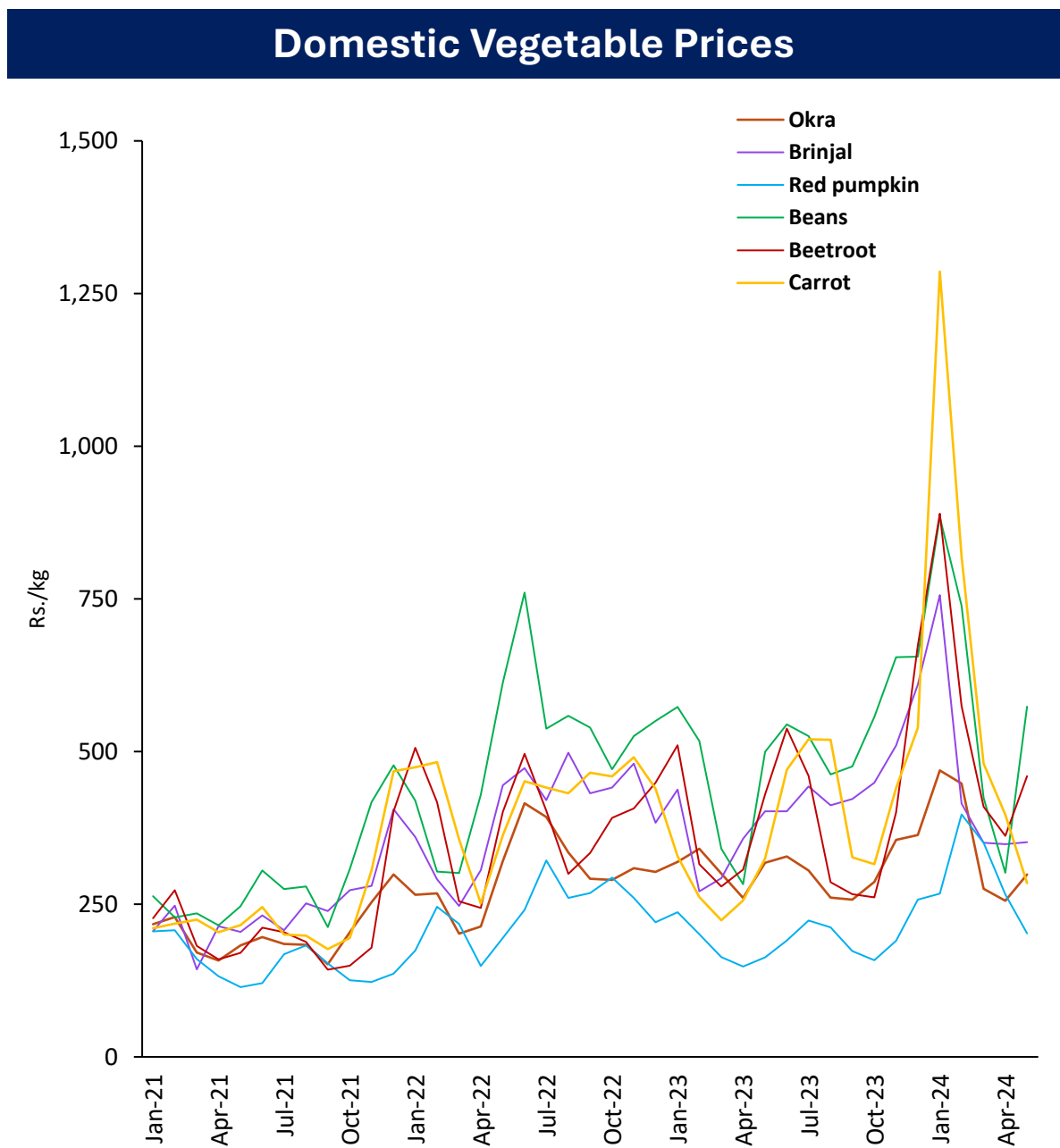


**In late April 2024, the Japanese Government provided a grant of US\$3 million through the FAO to strengthen inland fisheries and improve rural livelihoods**

The **US\$ 3 million initiative** will bolster food and nutritional security and fortify resilience by establishing **four community operated mini hatcheries in Batticaloa, Mullaitivu, Anuradhapura and Monaragala districts, upgrade four NAQDA Aquaculture Development Centres and one community operated mini fish breeding centre** to increase breeding and rearing capacity, enhance fingerling stocks in selected reservoirs, develop broodstock for breeding units and promote cage culture for seed rearing among fisher communities.

Vegetable Production (MT)					
	2021/22 Maha	2022 Yala	2022/23 Maha	2023 Yala	2023/24 Maha*
<b>Up Country</b>					
<b>Tomatoes</b>	40,656	47,425	46,244	34,169	<b>34,862</b>
<b>Cabbage</b>	49,593	67,069	52,310	47,773	<b>50,193</b>
<b>Carrot</b>	36,372	40,806	40,084	25,267	<b>38,991</b>
<b>Beetroot</b>	18,609	15,580	17,178	21,444	<b>14,337</b>
<b>Raddish</b>	29,796	38,506	26,955	27,557	<b>25,126</b>
<b>Beans</b>	34,253	33,929	41,139	25,287	<b>35,275</b>
<b>Low Country</b>					
<b>Luffa</b>	24,438	19,288	24,852	18,417	<b>14,005</b>
<b>Okra</b>	37,294	36,181	38,984	31,351	<b>32,925</b>
<b>Brinjal</b>	66,621	61,628	80,637	54,450	<b>60,052</b>
<b>Cucumber</b>	18,015	15,959	21,013	26,603	<b>15,781</b>
<b>Red pumpkin</b>	55,465	44,249	59,163	41,779	<b>42,833</b>
<b>Ash plantain</b>	35,600	24,926	35,369	22,833	<b>5,374</b>
<b>Long bean</b>	35,536	30,735	35,395	27,456	<b>33,694</b>

\*2023/24 Maha season production is based on the Department of Agriculture forecast



Source: Department of Census and Statistics

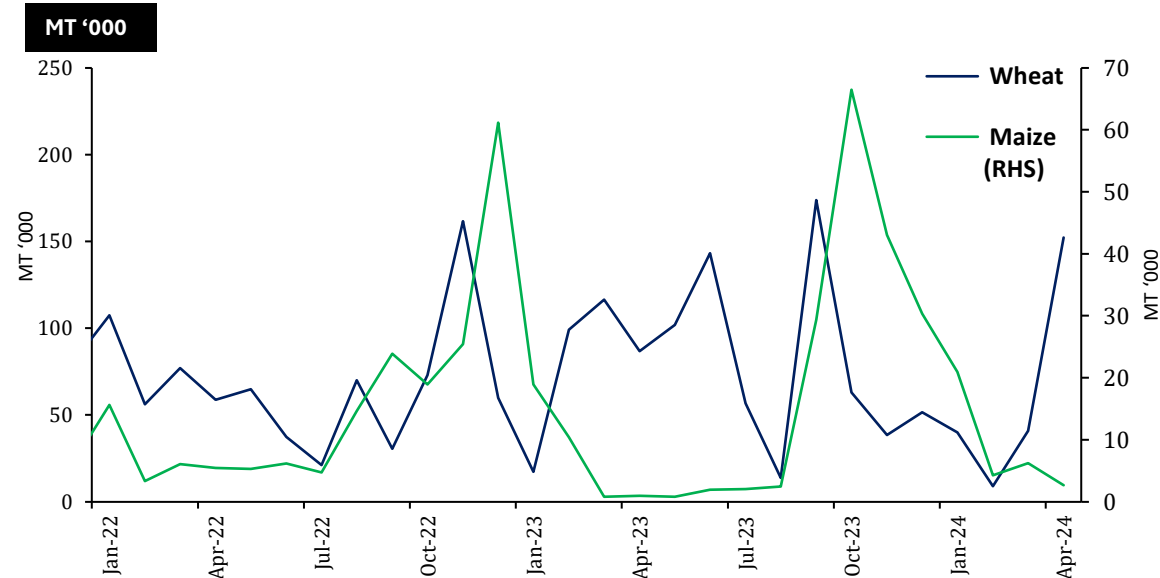
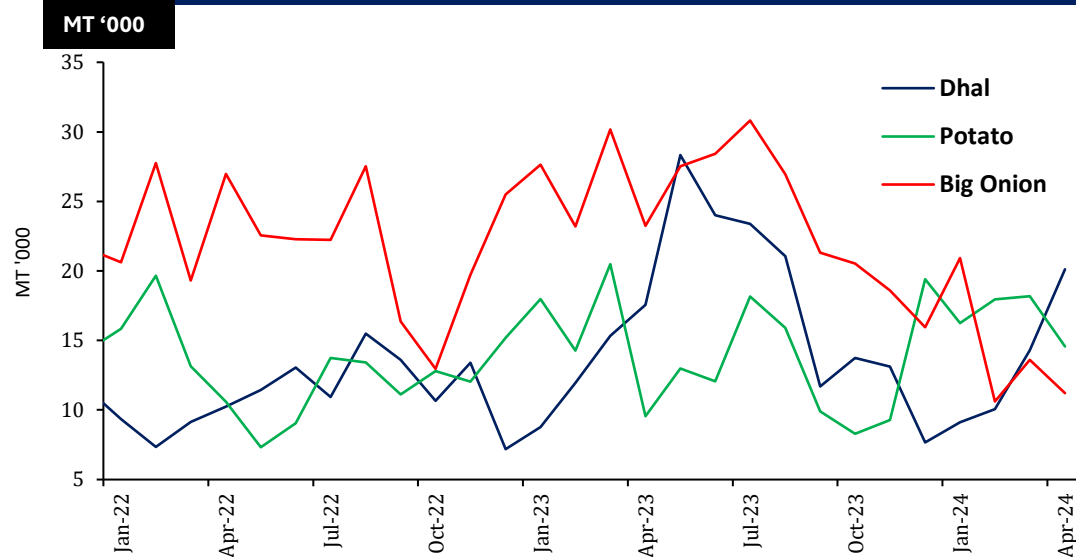
## Other Field Crops

	2021/22 Maha	2022 Yala	2022/23 Maha	2023 Yala	2023/24 Maha*
Potato	19,850	27,764	19,723	21,026	<b>21,852</b>
Red Onion	29,903	19,565	26,673	22,678	<b>29,190</b>
Big Onion	635	17,164	329	4,755	<b>76</b>
Green Chillie	35,718	27,316	42,270	25,128	<b>36,096</b>
Cowpea	7,868	6,976	7,022	5,779	<b>8,570</b>
Black gram	7,288	2,632	8,346	1,437	<b>11,072</b>
Maize	236,928	22,112	198,601	22,647	<b>298,985</b>
Ground Nut	15,976	11,204	19,014	10,666	<b>21,647</b>
Gingelly	2,488	7,742	2,701	8,651	<b>1,343</b>
Green gram	5,787	6,757	6,940	5,514	<b>5,621</b>

\*2023/24 Maha season production is based on the Department of Agriculture forecast

IMPORTS	2022	2023	2023 Jan - Apr	2024 Jan - Apr
Dhal	131,711	196,601	53,610	<b>53,551</b>
Potato	153,827	168,184	62,244	<b>66,951</b>
Big Onion	263,781	294,386	104,270	<b>56,331</b>

### IMPORT TREND OF SELECTED FOOD ITEMS



Sources: Department of Census and Statistics, Sri Lanka Customs

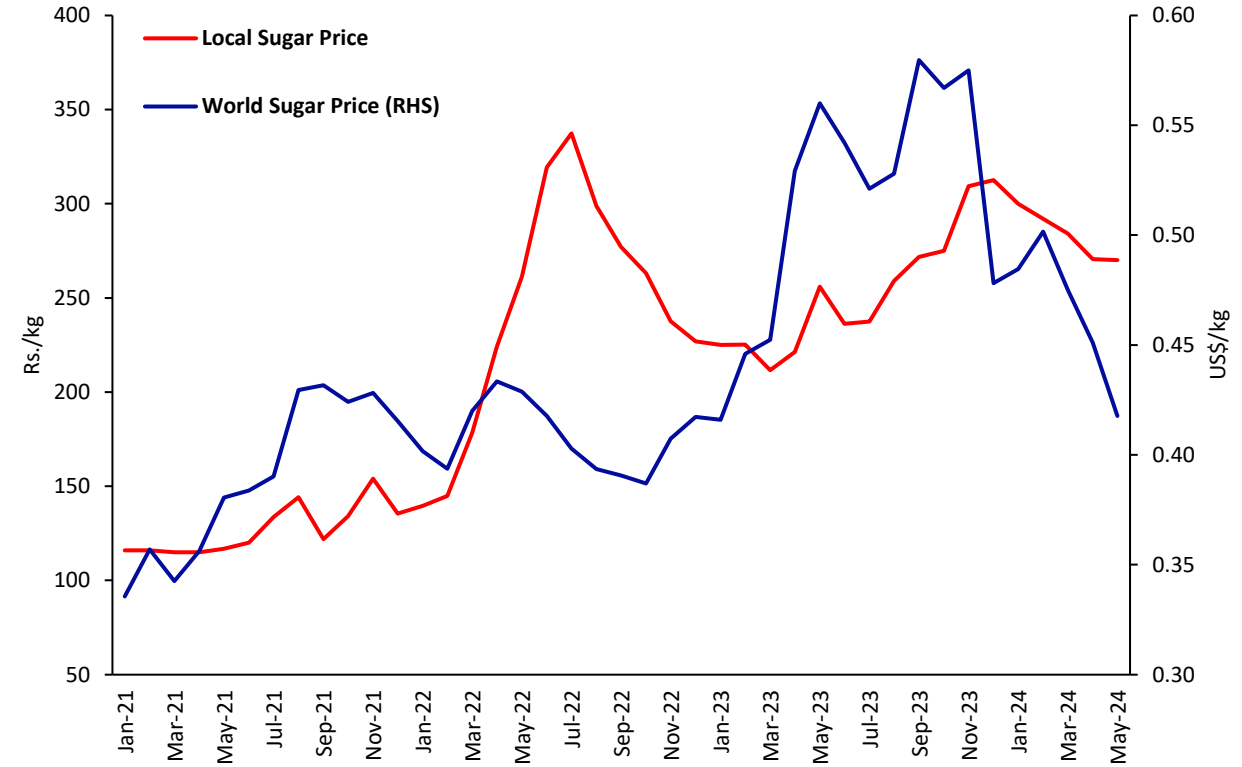
# Sugar

	2023 Jan- Apr	2024 Jan- Apr
Sugar Production (MT)	17,142	20,394
Sugar Imports (MT)	282,257	142,903

## Import Trend



## Price Trend



**The drop in international sugar prices in recent months was mainly driven by the strong start of the new harvest season in Brazil, supported by favourable weather conditions that improved the global supply outlook. Additionally, increased export availability from Brazil further pressured sugar prices downward.**

Sources: Sugar Companies, Sri Lanka Customs, World Bank

## Livestock

	2023 Feb	2024 Jan	2024 Feb	
<b>Production</b>	Egg (mn)	171	196	207
	Chicken (000 MT)	21	21	20
<b>Price</b>	Egg-White (Rs./egg)	44.00	50.88	59.38
	Egg - Red (Rs./egg)	46.00	52.75	61.25
	Chicken (Rs./kg)	1,192.92	1,062.50	1,205.00
<b>Cost of Production</b>	Egg (Rs./egg)	37.84	30.09-35.89	29.22-34.29
	Chicken (Rs./kg)	1,132.39	795.69	802.79

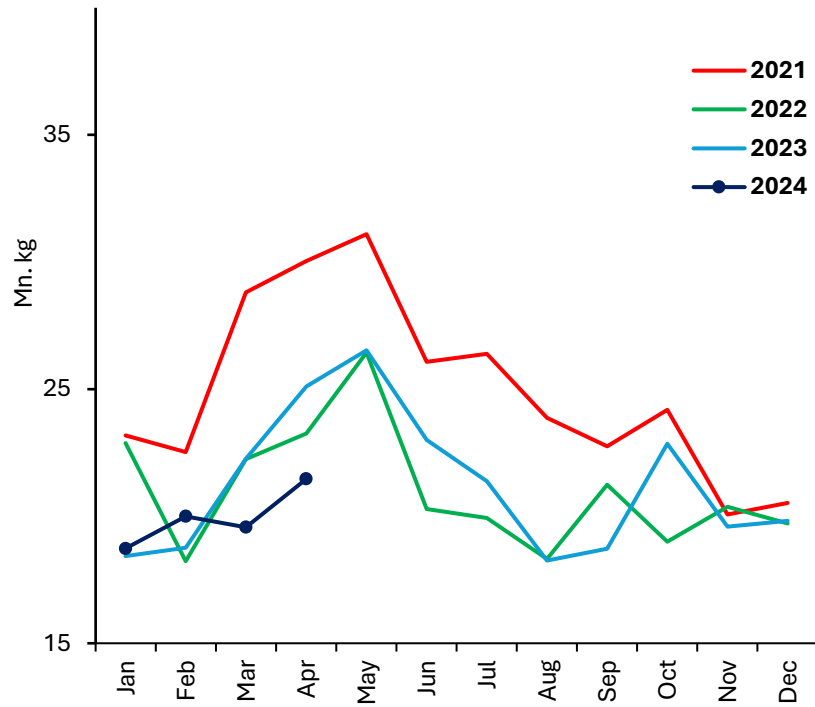
Feed Ingredients (Rs./kg)	2023 Feb	2024 Jan	2024 Feb
Maize	162.50	n.a	152.75
Soya bean meal	325.00	311.67	306.25
Fish meal	n.a	358.75	312.50
Rice polish	98.33	99.25	99.17
Rice bran	77.50	163.13	n.a

Source: Department of Animal Production and Health (DAPH)

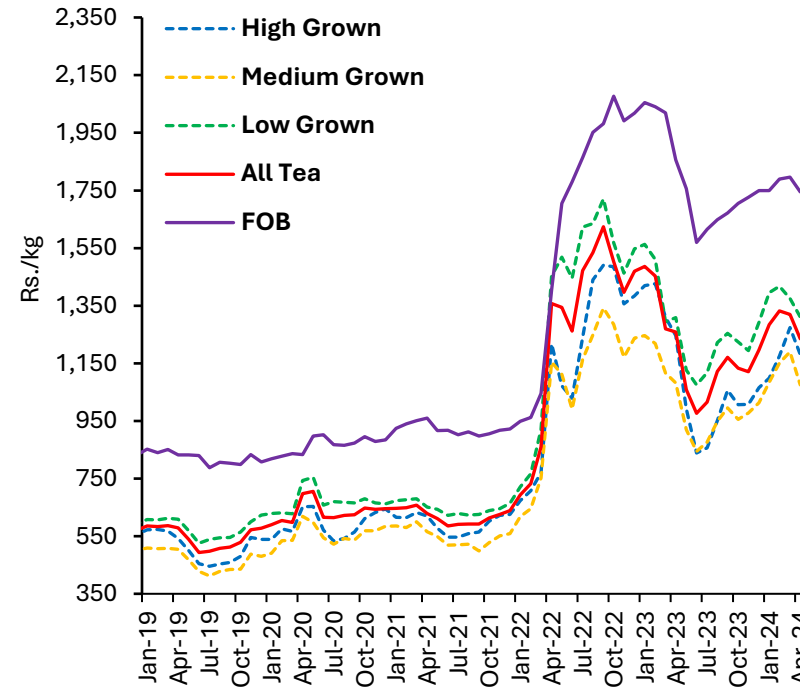


# Tea

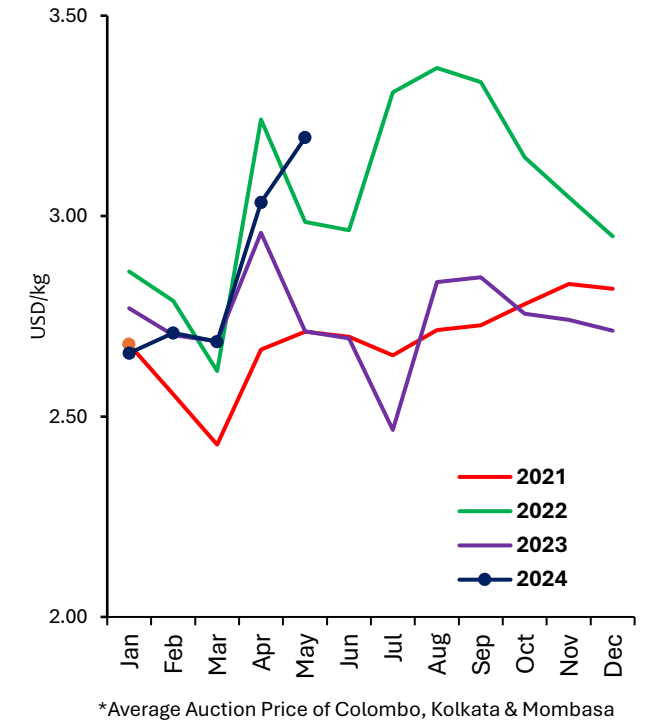
## Monthly Tea Production



## Monthly Average Tea Auction Prices & FOB Prices



## International Prices



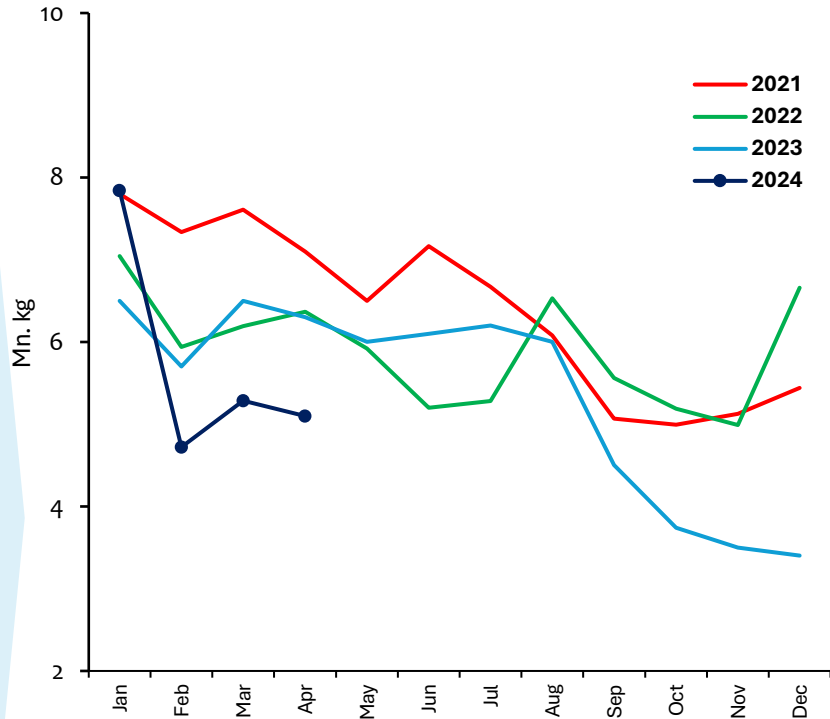
Tea Production (mn kg)	2023	2023 Jan-Apr	2024 Jan-Apr	Growth %
High grown	58.0	19.3	17.6	(8.7)
Medium grown	42.2	13.7	13.7	(0.4)
Low grown	154.5	51.5	48.5	(5.9)
<b>Total</b>	<b>254.7</b>	<b>84.5</b>	<b>79.8</b>	<b>(5.7)</b>

- Domestic tea production decreased by **14.5%** (y-o-y) during the month of April 2024.
- Some upward price pressures are being reported on international tea prices due to rising industry costs and the Red Sea crisis affecting container ship movements.

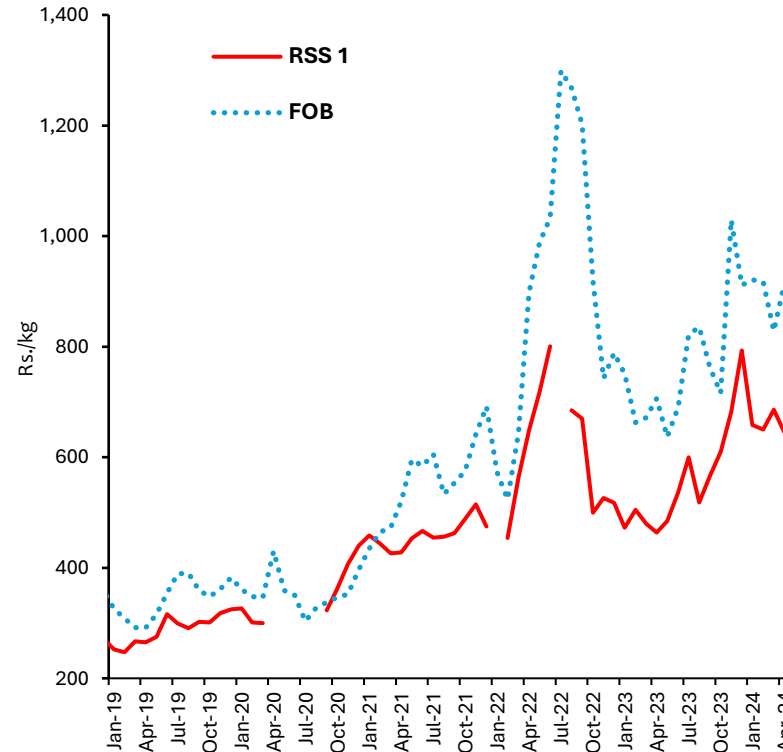
Sources: Sri Lanka Tea Board, Colombo Tea Brokers' Association, World Bank, Central Bank of Sri Lanka

# Rubber

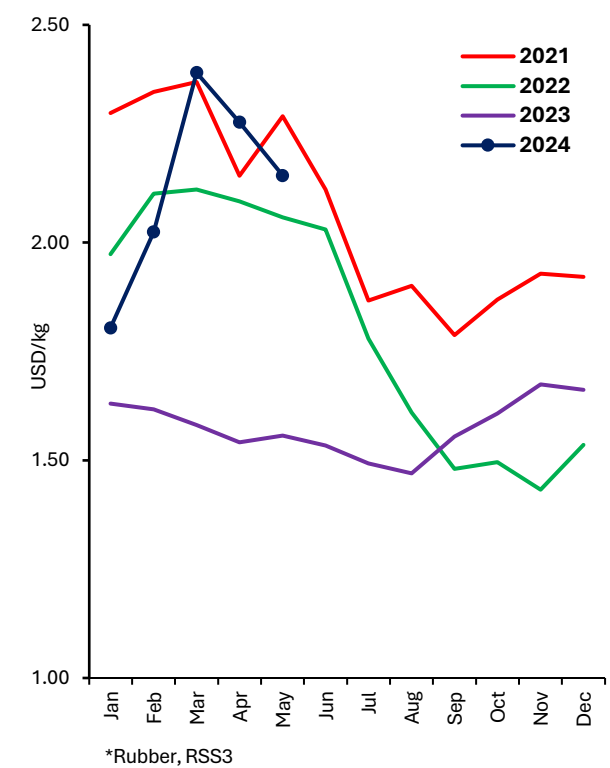
### Monthly Rubber Production



### Monthly Average Rubber Auction Prices & FOB Prices



### International Prices



\*Rubber, RSS3

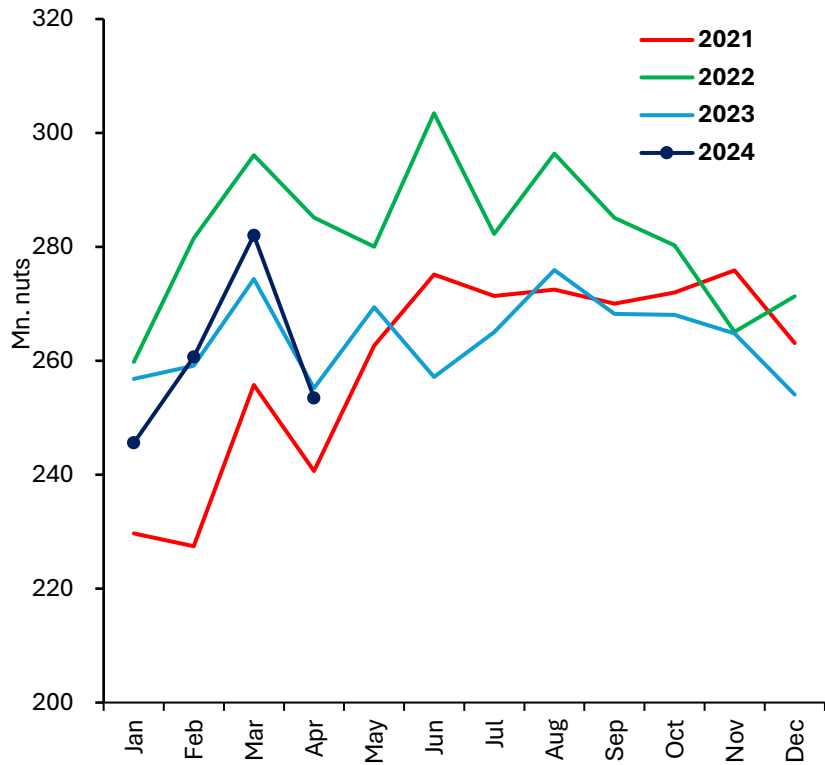
Rubber Production (mn kg)	2023	2023 Jan-Apr	2024 Jan-Apr	Growth %
Sheet Rubber	32.2	10.8	9.8	(9.0)
Crepe Rubber	11.1	4.8	3.7	(24.0)
Other	21.1	9.4	9.5	0.8
<b>Total</b>	<b>64.4</b>	<b>25.0</b>	<b>22.9</b>	<b>(8.2)</b>

- Domestic rubber production decreased by **19.1% (y-o-y)** during the month of April 2024.
- In May, the Natural Rubber market experienced a steady decline in prices, influenced by a complex interplay of global factors that affected both exporting and importing nations.

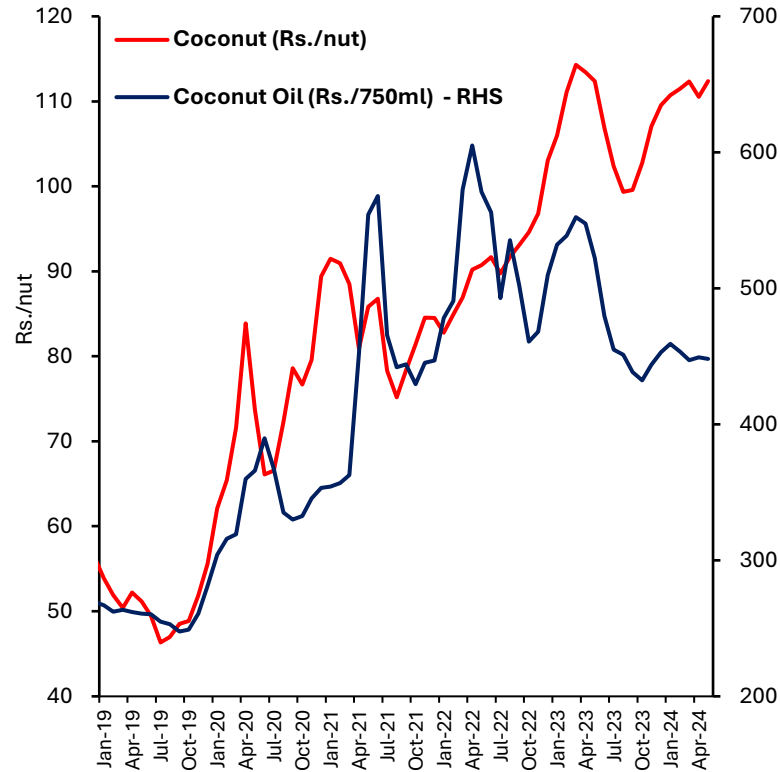
Sources: Rubber Development Department, Ceylon Chamber of Commerce, World Bank, Central Bank of Sri Lanka

# Coconut

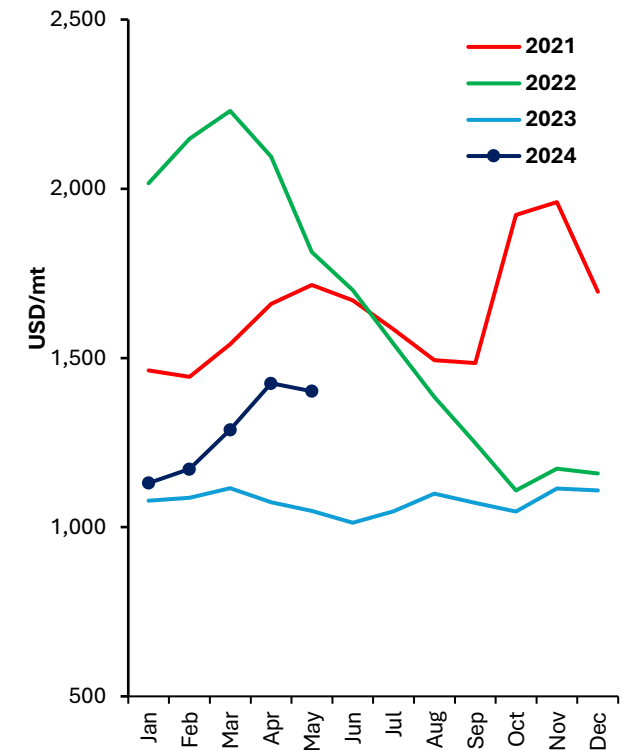
### Monthly Coconut Production



### Retail Price of Coconut and Coconut Oil



### International Coconut Oil Prices



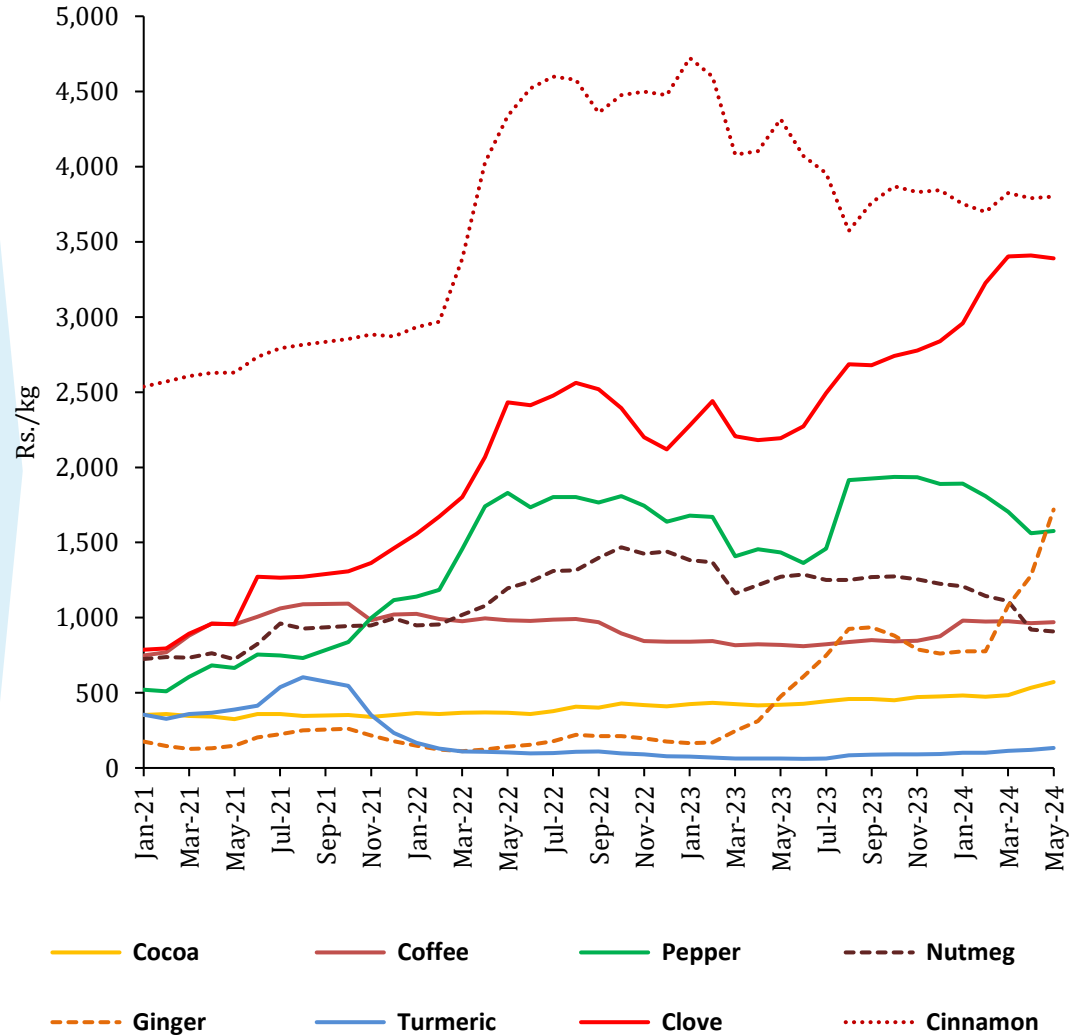
Coconut Production	2023	2023 Jan-Apr	2024 Jan-Apr	Growth %
Coconut (mn nuts)	3,168	1,045	1,042	(0.4)
Desiccated Nut (MT)	31,985	8,756	9,273	5.9
Coconut Oil (MT)	43,475	18,826	10,586	(43.8)

• **Coconut production decreased by 0.7% (y-o-y) during the month of April 2024.**

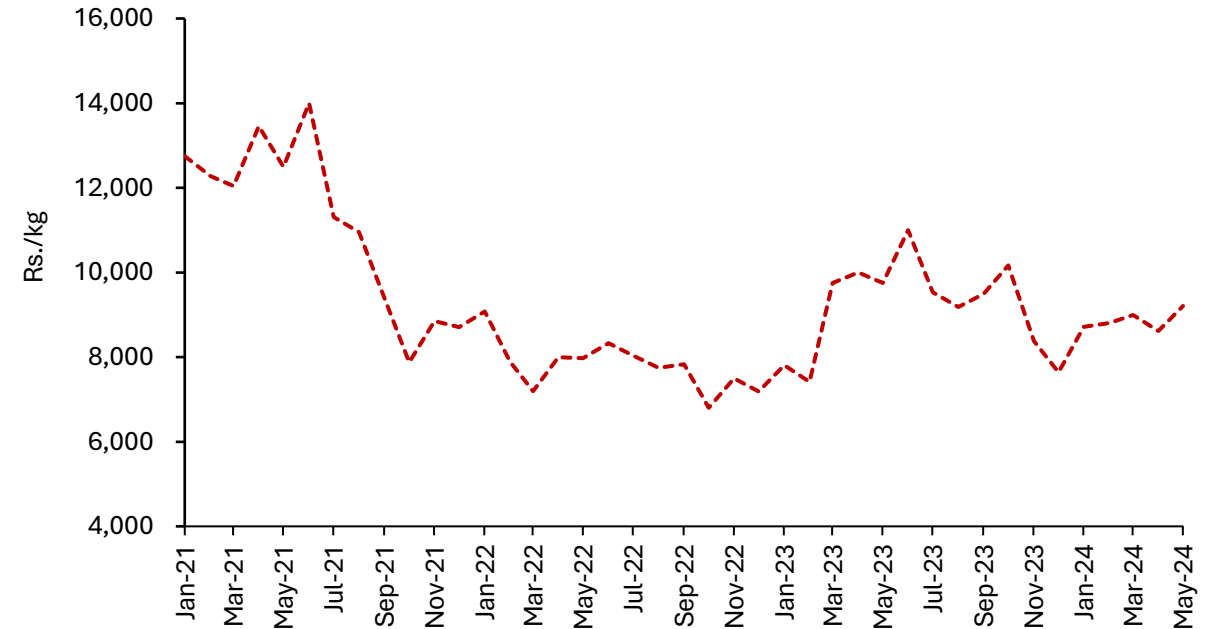
Sources: Coconut Development Authority, Department of Census and Statistics, World Bank

# Other Export Agriculture

## Monthly Average Prices of Selected Export Agriculture Crops

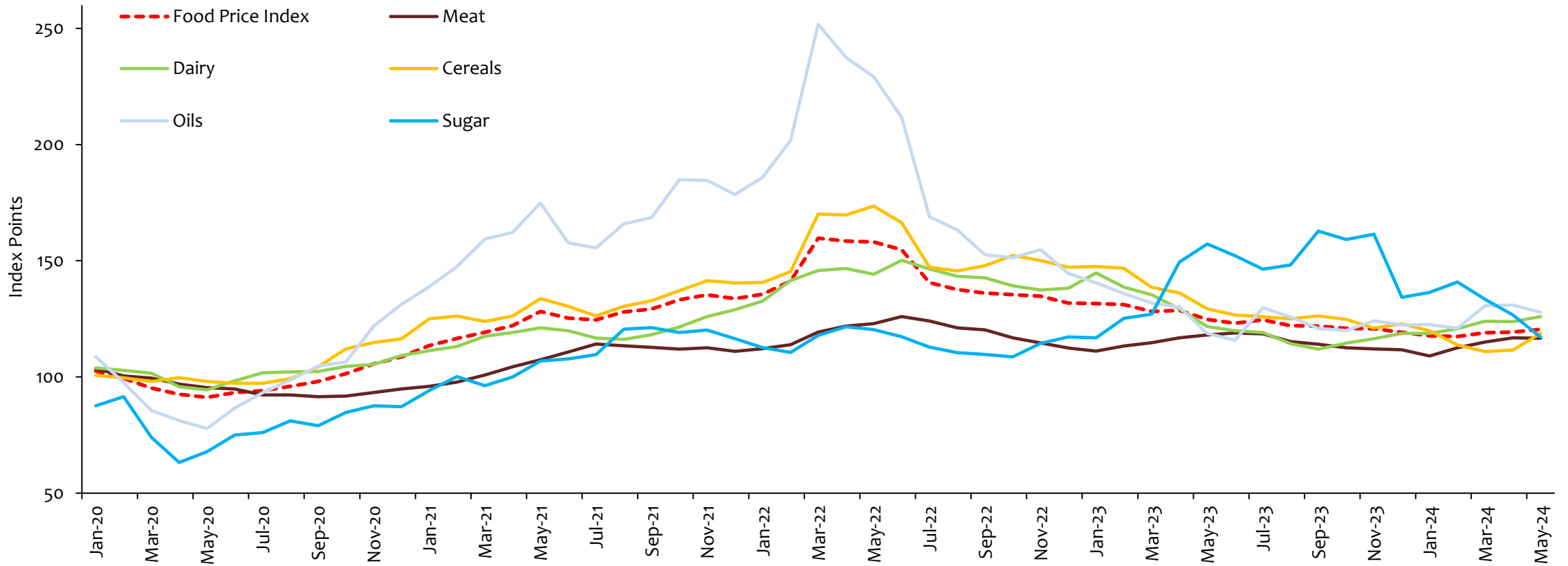


## Monthly Average Price of Cardamom



- In May 2024, the market prices of most of the export crops such as Pepper, Cardamom, Cinnamon, Coffee, Cocoa, Turmeric, and Ginger experienced an increase while Clove and Nutmeg prices registered decreases (m-o-m basis).
- Earnings from exports of spices decreased notably in April 2024 (y-o-y) mainly due to the poor performance in the export of Cinnamon and Cloves.

# FAO Food Price Index



- **The FAO Food Price Index stood at 120.4 points in May 2024, marking an increase of 1.1 points (0.9%) from the April level. This uptick was driven by increases in the price indices for dairy and cereals, which offset the declines seen in the sugar and vegetable oil price indices.**



**Economic Research Department**  
Central Bank of Sri Lanka