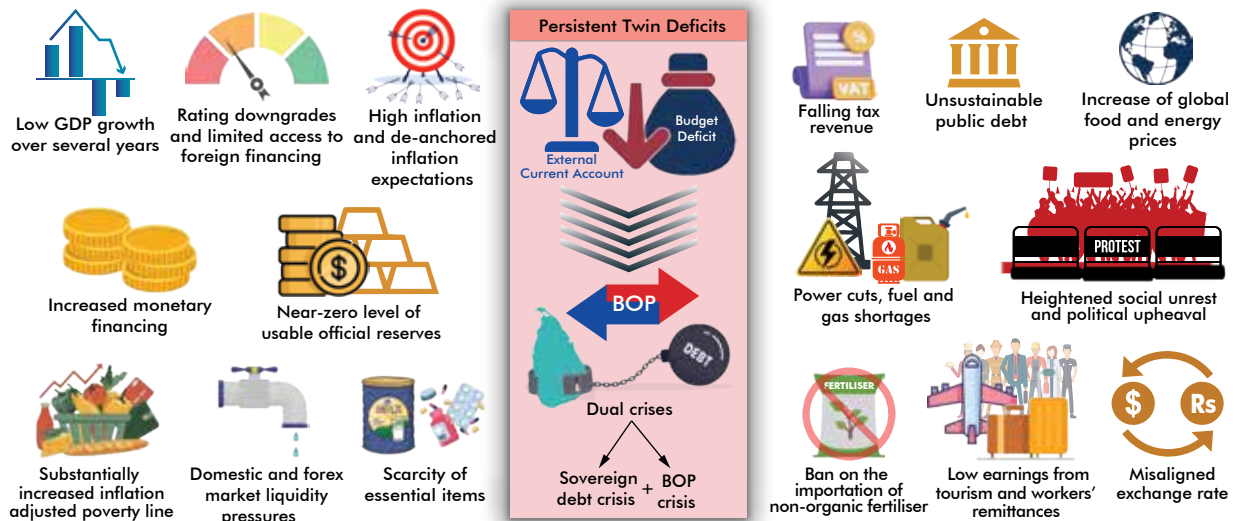
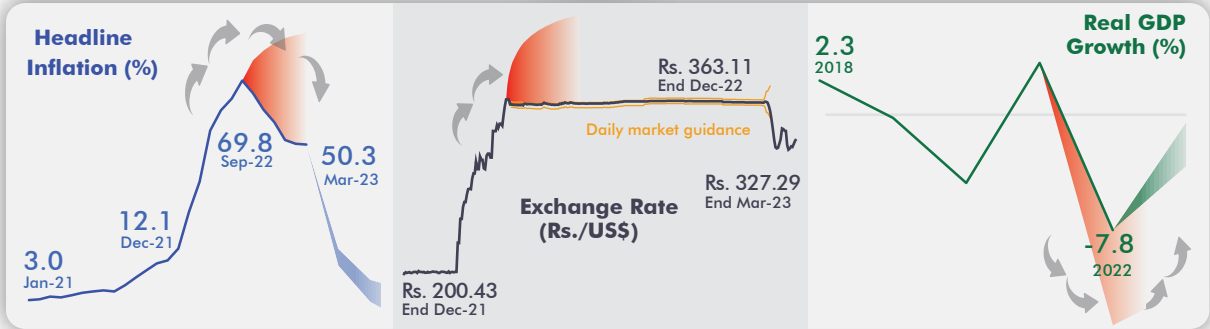


Figure 1.1  
The Socio-Economic Crisis in 2022, Policy Actions and Outcomes Towards Restoring Stability



**Significant tightening of monetary policy**



The outcomes of coordinated policy actions have eventuated since late 2022, and the country managed to transition to a workable equilibrium until the assistance from the international financial institutions begins to materialise.

