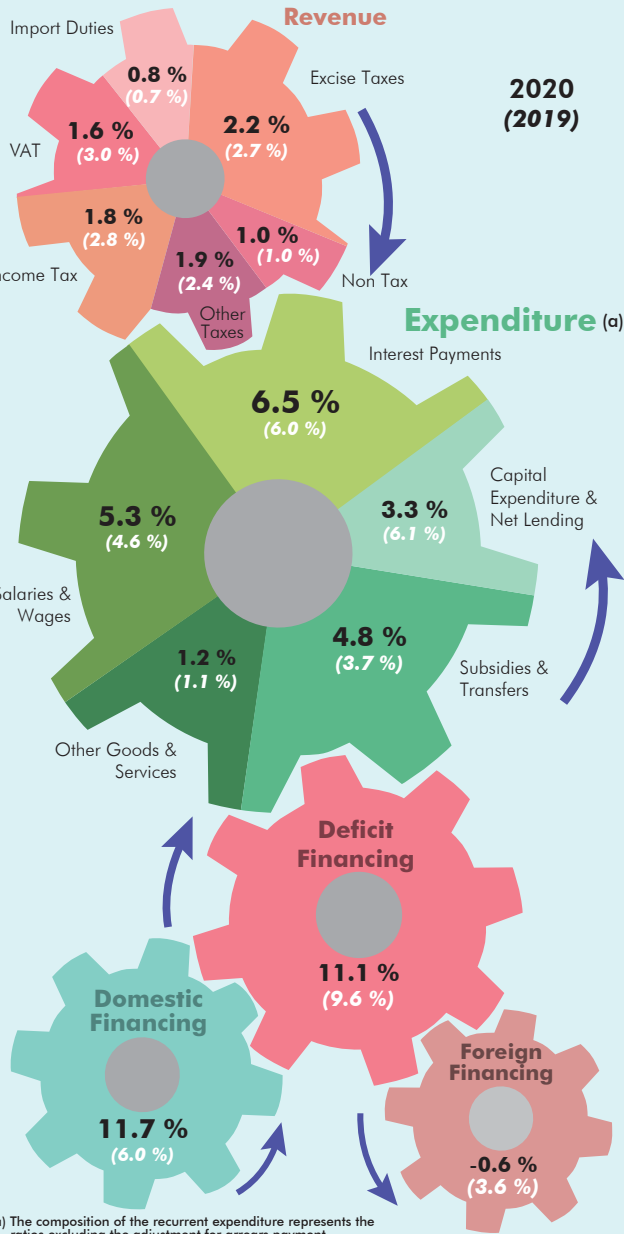
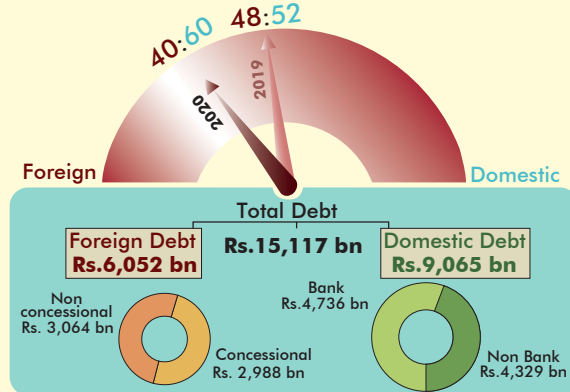


Figure 6.1  
Fiscal Sector Performance

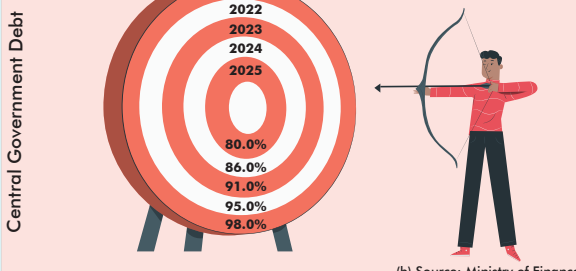
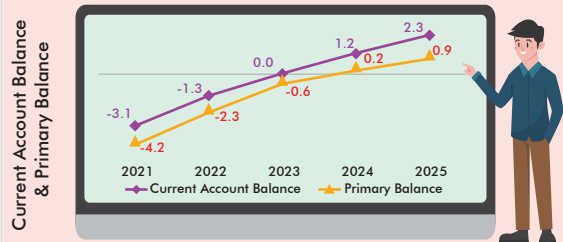
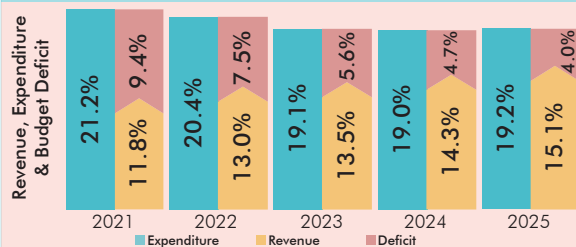
Revenue, Expenditure and Deficit Financing (% of GDP)



Outstanding Central Government Debt



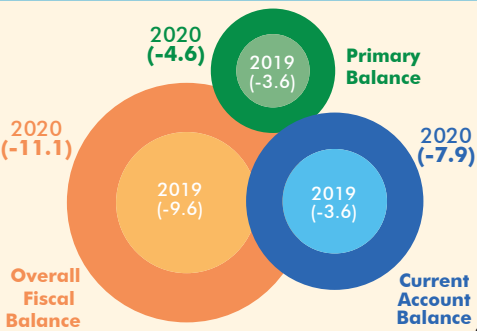
Medium Term Fiscal Framework (% of GDP) (b)



(a) The composition of the recurrent expenditure represents the ratios excluding the adjustment for arrears payment.

(b) Source: Ministry of Finance

Key Fiscal Balances (% of GDP)



Budgetary Operations (2019-2021)

